

INSPIRING ROAD TRIPS

Central Montana & Montana's Missouri River Country



Grab some grub



Quench your thirst



Photo op



Do some shopping



Breath of fresh air



Can't miss



Fun with the kids



Rest your head

Havre > Fort Benton > Great Falls > White Sulphur Springs > Harlowton > Lewistown > Zortman > Malta

From the Wild Horse or Willow Creek entry

DAY 1

HAVRE

Experience **Havre Beneath the Streets** – a re-creation of Havre's history, all underground. ! 🦋

Stop in the welcoming environment at **Bearly Square Quilting**. 🛍️

HWY 87 TO FORT BENTON

Grab a bite for lunch at **Wake Cup Coffee House and Restaurant**. 🍴 🍷

Take in the views of the Missouri River as you stroll across the **walking bridge**. 🌅 📷

HWY 87 TO GREAT FALLS

Get a breath of fresh air at **Giant Springs State Park**. 🌳

Outfit your work and play at **North 40 Outfitters**. 🛍️

Don't miss the **Sip 'N Dip Tiki Bar and Restaurant** – eat and drink among mermaids! !

Check into **Hotel Arvon** for the night – a historic boutique hotel located in downtown. 🏠

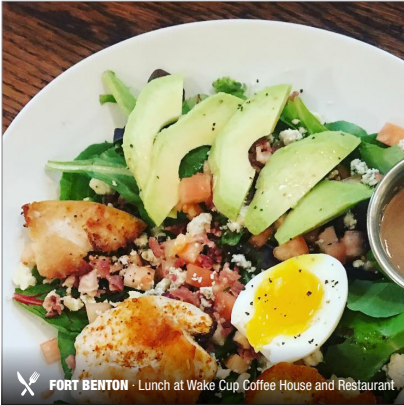
DAY 2

Before hitting the road, grab breakfast and coffee at **Crooked Tree Coffee and Cakes**. 🍴

HWY 89 TO WHITE SULPHUR SPRINGS

Take a soak at the **Spa Hot Springs**. 🦋 !

Quench your thirst with a local beer at **2 Basset Brewery**. 🍷



FORT BENTON - Lunch at Wake Cup Coffee House and Restaurant



GREAT FALLS - Walking bridge at Giant Springs State Park



WHITE SULPHUR SPRINGS - Take a soak at Spa Hot Springs

INSPIRING ROAD TRIPS

Central Montana & Montana's Missouri River Country



HWY 12 TO HARLOWTON

Another stop along the way at a local brewery – **Gally's Brewing Co.** 🍷

HWY 191 TO LEWISTOWN

Check into the **Historic Calvert Hotel** for a night's rest in style. 🏠

Enjoy an outstanding dinner at **Central Feed Grilling Co.** 🍴

DAY 3

Shop the **Heart of Montana at The Hub Antique Store** and **Lewistown Art Center.** 🛍️

Make a family stop at **Frank Day Park** – providing access to the Lewistown Trail System and Big Spring Creek. 🦋 🌞

HWY 191 TO ZORTMAN

Take the family to **pan for gold!** 🦋

HWY 191 TO MALTA

Great Plains Dinosaur Museum and **Phillips County Museum** are two stops along the **dinosaur trail.** 🦋

Grab a cold one at **Blue Ridge Brewing.** 🍷

Rest your head and enjoy an elegant steakhouse dinner at the **Great Northern Hotel.** 🍴



central
MONTANA

MONTANA'S
MISSOURI RIVER COUNTRY

