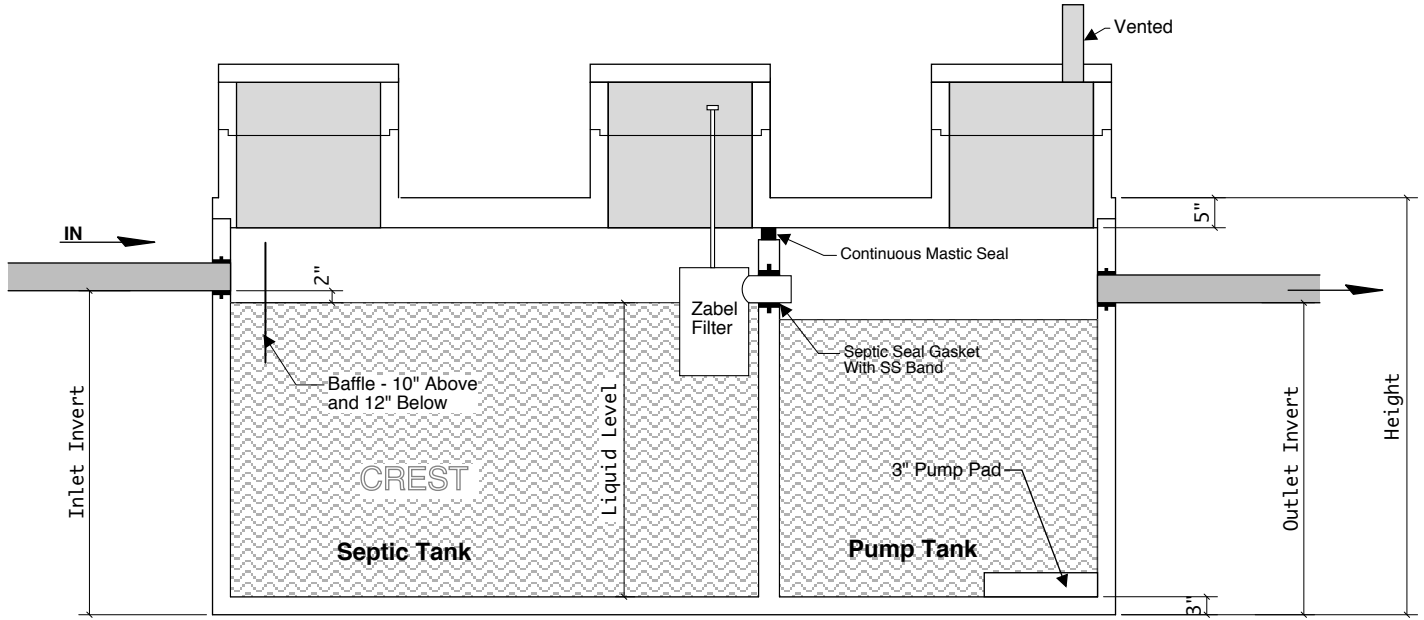
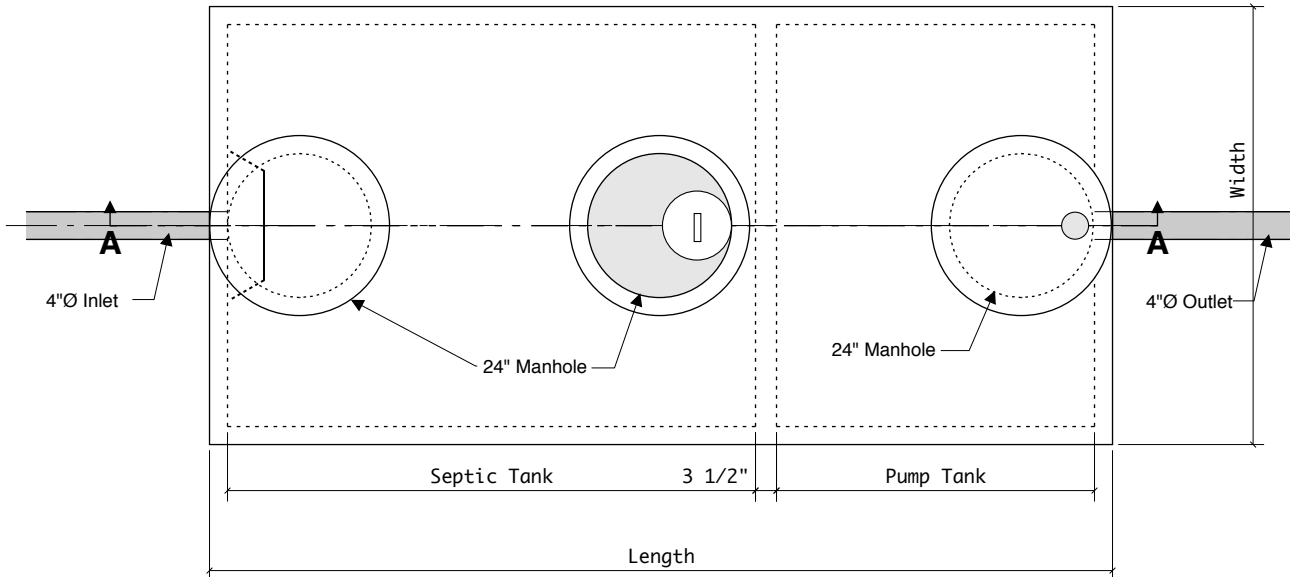


## Quick Combo Guide



**Section A-A**



**Top View**

## Combination With Zabel/Orenco/Zoller Filter

### Three Year Service Guide

Septic / Pump	Inlet	Liquid Level	GPI	Gallons Per Day
1000-600	45"	40"	15.4	489
1000-600	48"	43"	14.0	513
1250-750	48"	43"	18.5	630
1250-750	54"	49"	15.4	600
1000-750	48"	43"	18.1	511
1000-1000	48"	43"	23.7	511
1300-850	48"	43"	20.6	630
700-550	41"	36"	14.6	347
1500-1500	45"	39"	41.5	753

**Notes:**

- Filter installed on septic outlet
- Model A100-(12" x 16") or A100 Smart Filter with alarm
- Manhole installed to grade for service
- Install chain and padlock over both manholes
- Center wall is sealed between septic and pump chambers

**Specifications**

- Concrete minimum 4500 PSI
- Crest tanks have passed DOC Vacuum Testing Requirements
- Reinforced 6" OCEW
- Loading up to 7'-0" of cover
- Joints sealed with ConSeal 101
- Pipe penetrations use PressSeal brand septic seals
- Tank is marked on outlet with size and mfg. name

**Minimum Requirements**

- 2 Bedrooms - 300 GPD Required
- 3 Bedrooms - 450 GPD Required
- 4 Bedrooms - 600 GPD Required
- 5 Bedrooms - 750 GPD Required

**Filters**

- ZABEL A100 (12" x 16") - 3000 GPD Capacity  
Filtration size - 1/16" (2249 Inches Squared Filter Surface)
- ZABEL 1801 (4" x 22") - 800 GPD Capacity  
Filtration size - 1/16" (158 Inches Squared Filter Surface)
- ORENCO FT0444-36 - 750 GPD Capacity
- ORENCO FT1254-36 - 3000 GPD Capacity

**Crest Precast, Inc.**  
**La Crescent, MN & Barneveld, WI**  
 800-658-9045

Scale	Drawn By: <b>KG</b>
Date	Revision
<b>Project: STANDARD SEPTIC-PUMP TANK</b>	
<b>DOC # COM-84 Regulations</b>	Drawing Number