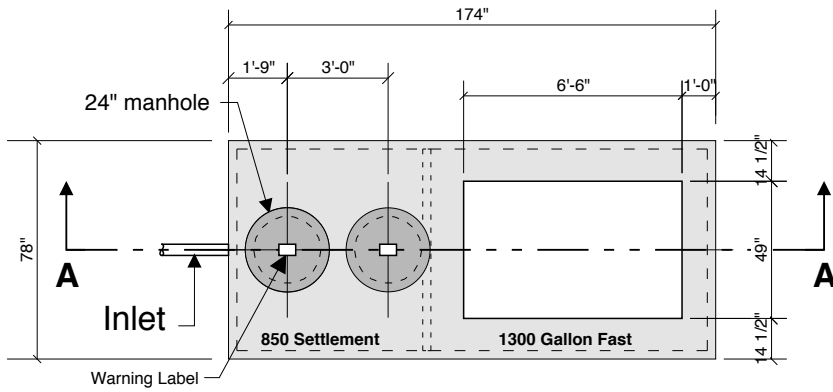
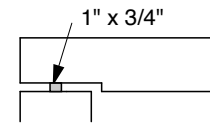


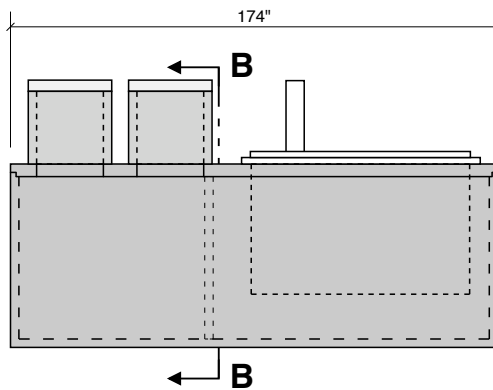
MICRO-FAST 1.5
850-1300 Combo
46" LL
53" INLET



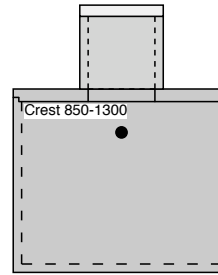
Top View



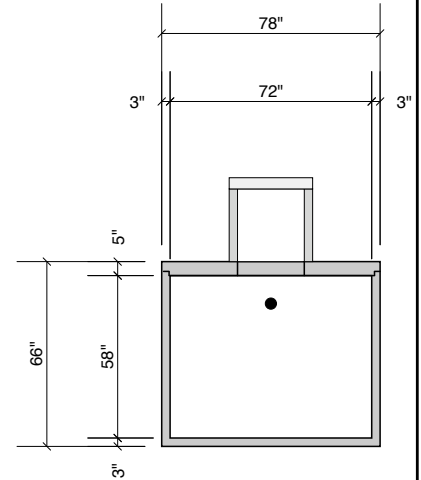
Typical Cover Detail



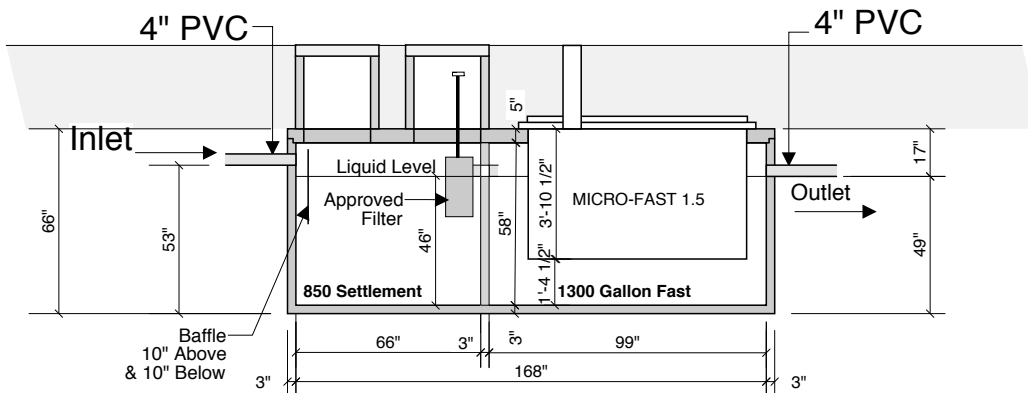
Side View



End View



Section B-B



Section A-A

DESIGN NOTES

- W/C RATIO 0.45 OR LESS
- 60" MAX. BURY DEPTH OVER TOP COVER
- RANDOM VACUUM OR WATER TESTING BY CREST

INSTALLATION NOTES:

- PLUMBING CONTRACTOR TO SEAL FAST UNIT TO TANK COVER. PLUMBER OR DEALER TO PROVIDE SEMI-ANNUAL INSPECTIONS OR SERVICE.
- Follow CREST bedding and backfill instructions.

EFFLUENT EQUALITY (AVERAGE VALUE)

- LESS THAN 10 MG/L B.O.D.
- LESS THAN 10 MG/L S.S.
- LESS THAN 10 MG/L PHOSPHORUS

SPECIFICATIONS

- CONCRETE - 5,000 PSI
- REINFORCE 6" OCEW
- MASTIC EZ STICK
- RUBBER BOOTS @ INLET & OUTLET - PRESS SEAL OR A-LOK BRAND
- SEAL AND ATTACH FAST INSERT TO PRECAST TANK PER MFG. INSTRUCTIONS
- INLETS & OUTLETS CAN BE 4" OR 6" DIA.

Crest Precast, Inc.
La Crescent, MN & Barneveld, WI
800-658-9045

Scale	Drawn By: KGT
Date	Revision
Project: Bio-Microbics F.A.S.T. - MCF 1.5	
Contractor:	Drawing Number MODEL 850-1300-1.5