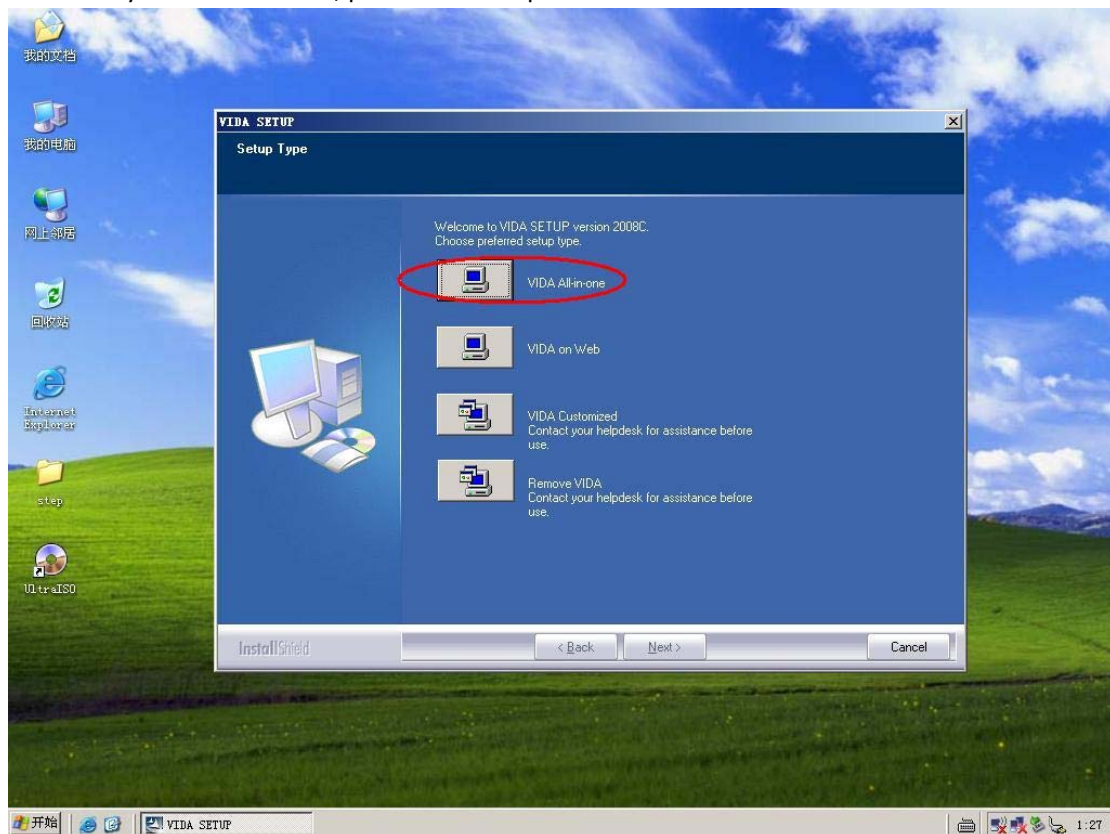
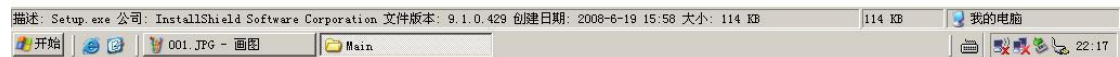
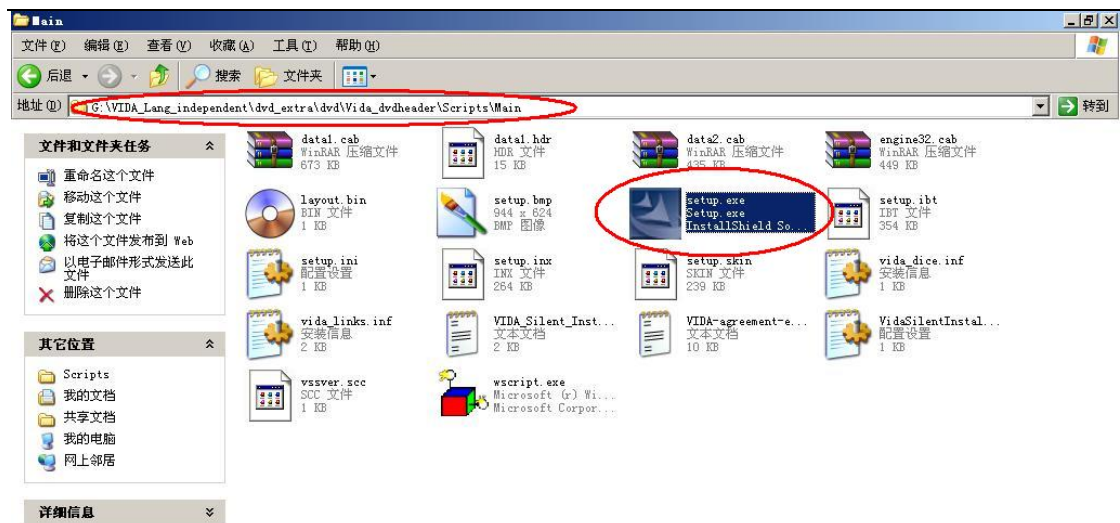


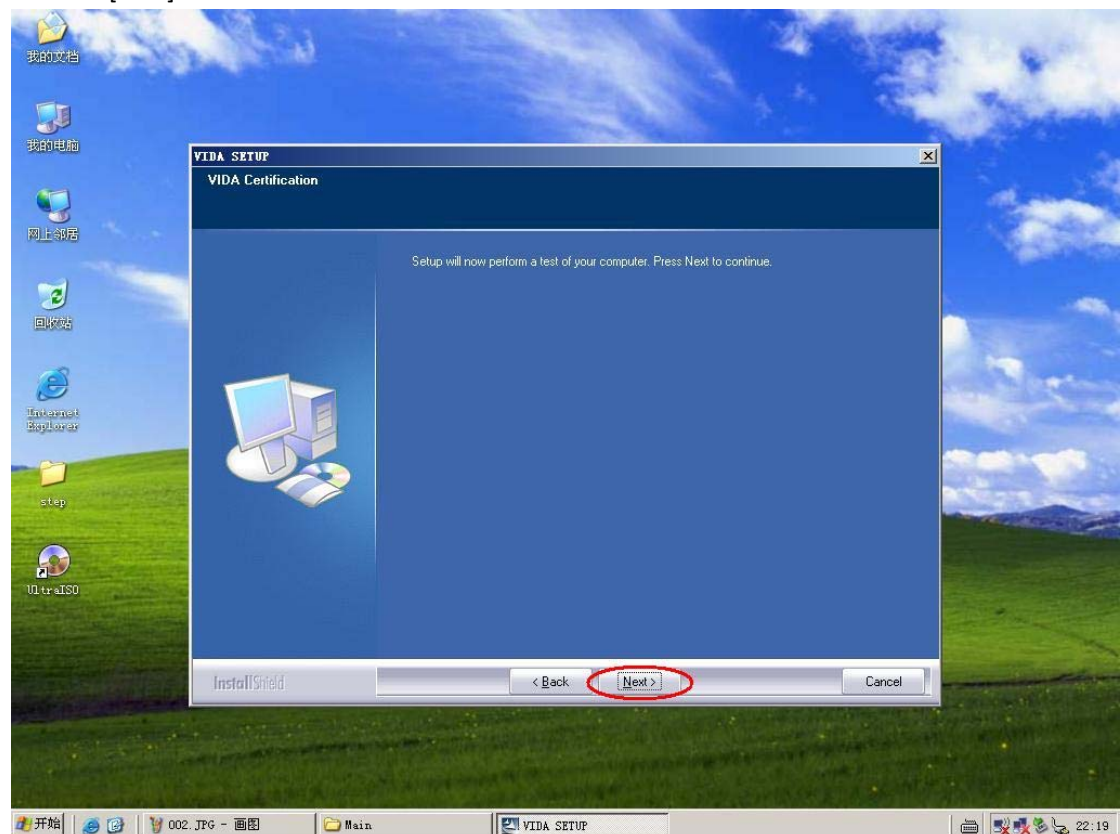
1. 插入光盘，自动弹出安装画面，点击【VIDA ALL-in-one】开始安装；  
如果没有自动弹出，则参考第 2 步操作 Insert the Volvo vida dice disk, automatically show the install screen. please click 【viad all-in-on】 start install. If this screen have not show up when you insert the disk, please do as step two show.



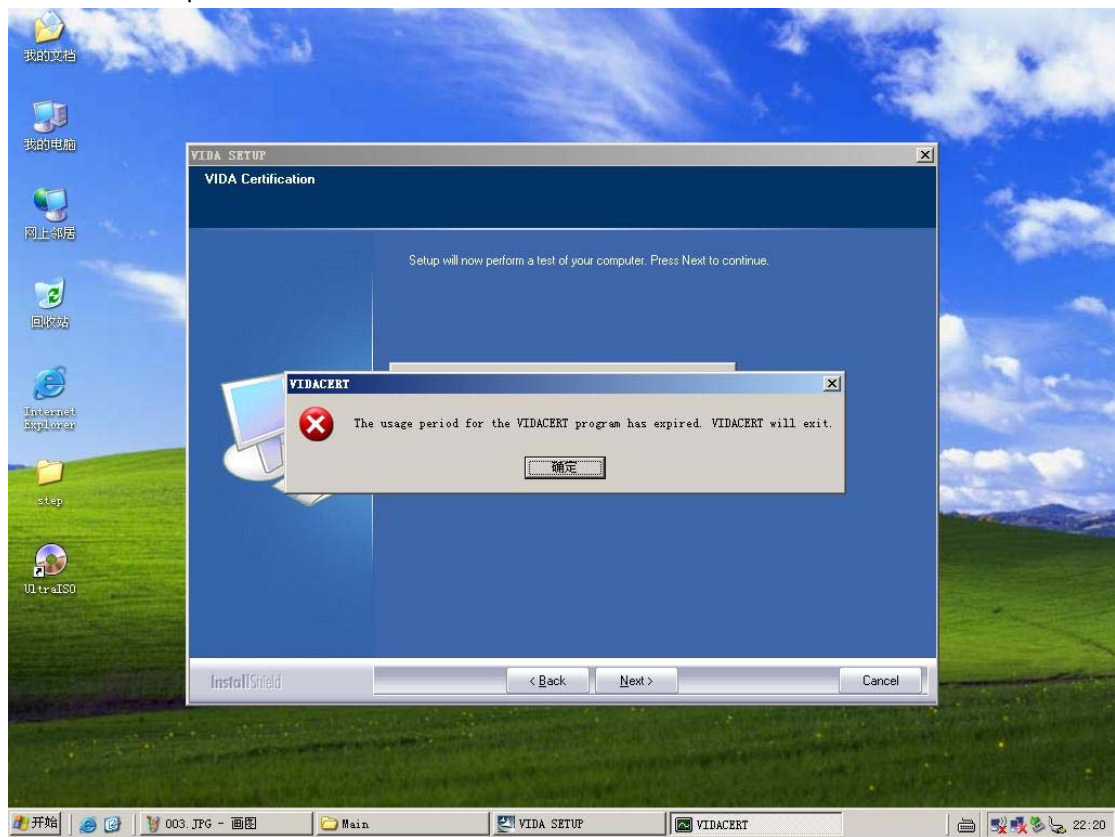
2. 在图示目录下找到安装文件【setup.exe】，双击打开，则出现第 1 步的安装画面  
Find install file[setup.exe] under the file as the pic show, double click to open it, then you will see the install screen as the step 1 show.



3. 点击【VIDA ALL-in-one】开始安装，继续点击【Next】 click [ vida all-in-one] start install, click[next].

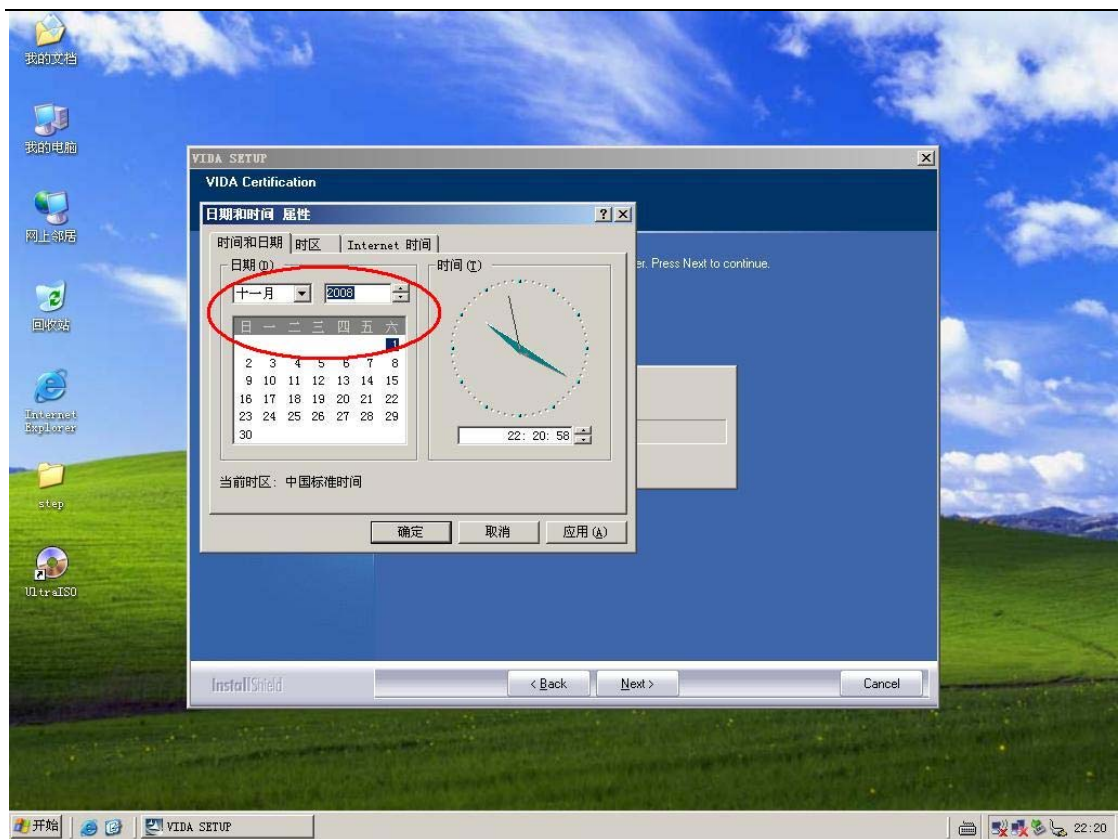


4. 如果显示以下图片,请参考第5步更改系统时间后重新启动电脑,再进行安装 if show the pic as below show, please do as step 5 show change the computer system time and then restart computer and finish install.

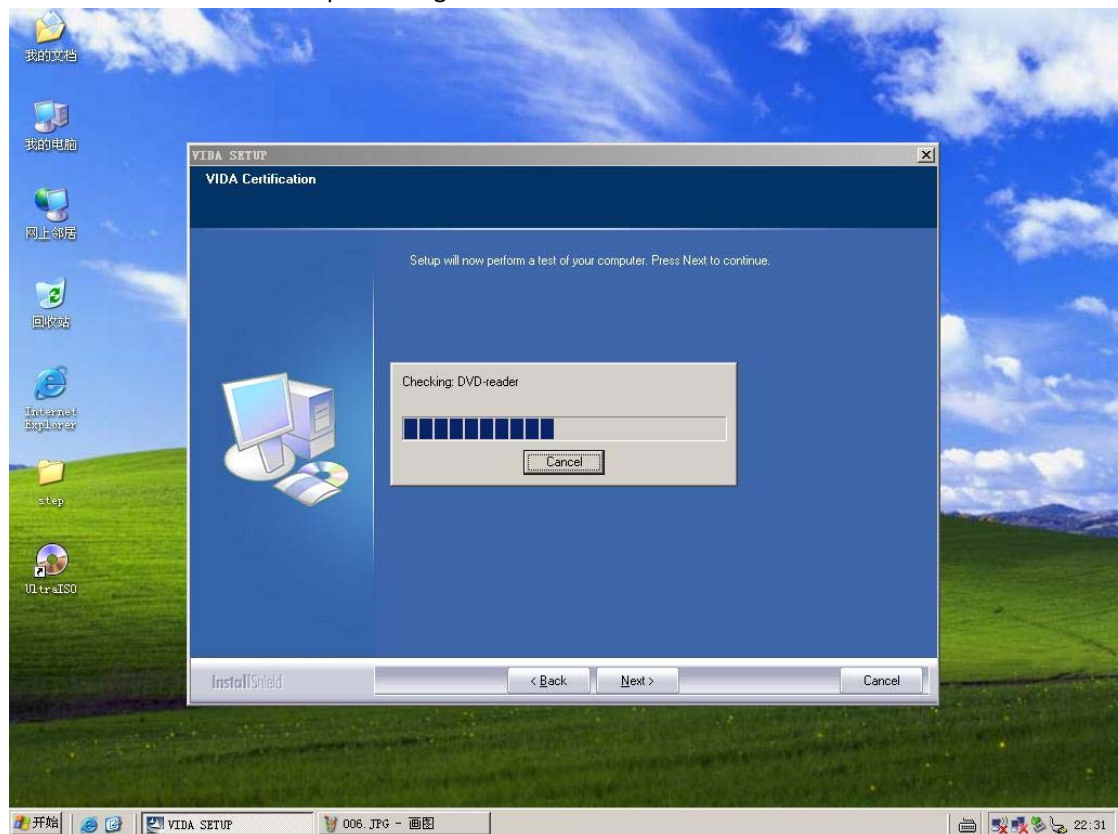


5. 更改系统时间到 2008 年 11 月 1 日, 然后重新启动电脑, 重复 1-3 步 Change computer system time back to 2008.11.1 then restart computer. Do again step 1 to 3.

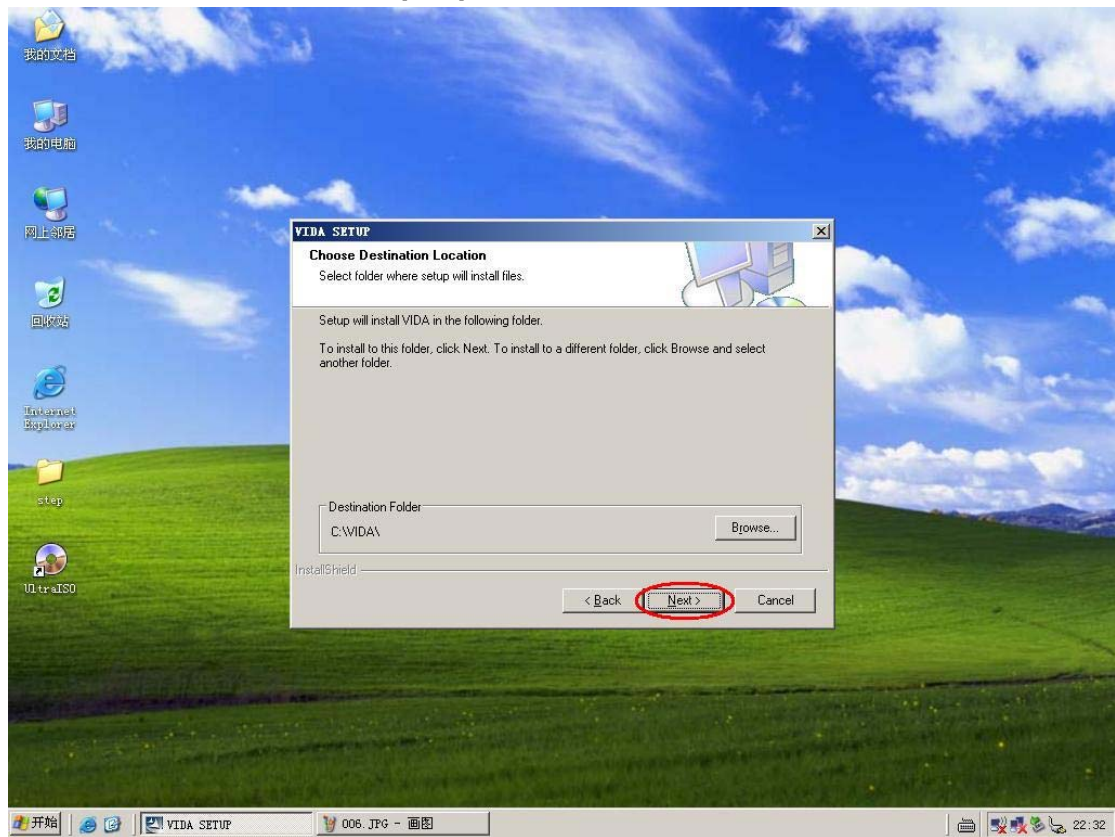




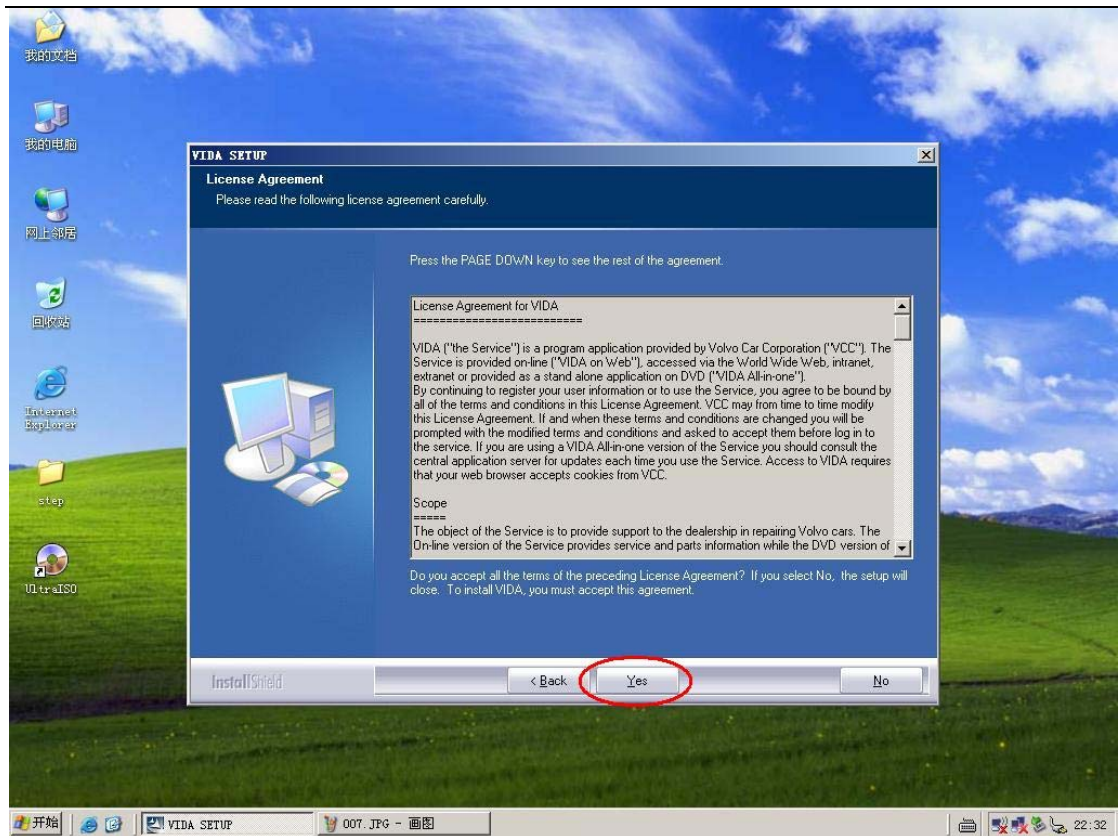
## 6. 安装正在进行 install processing.....



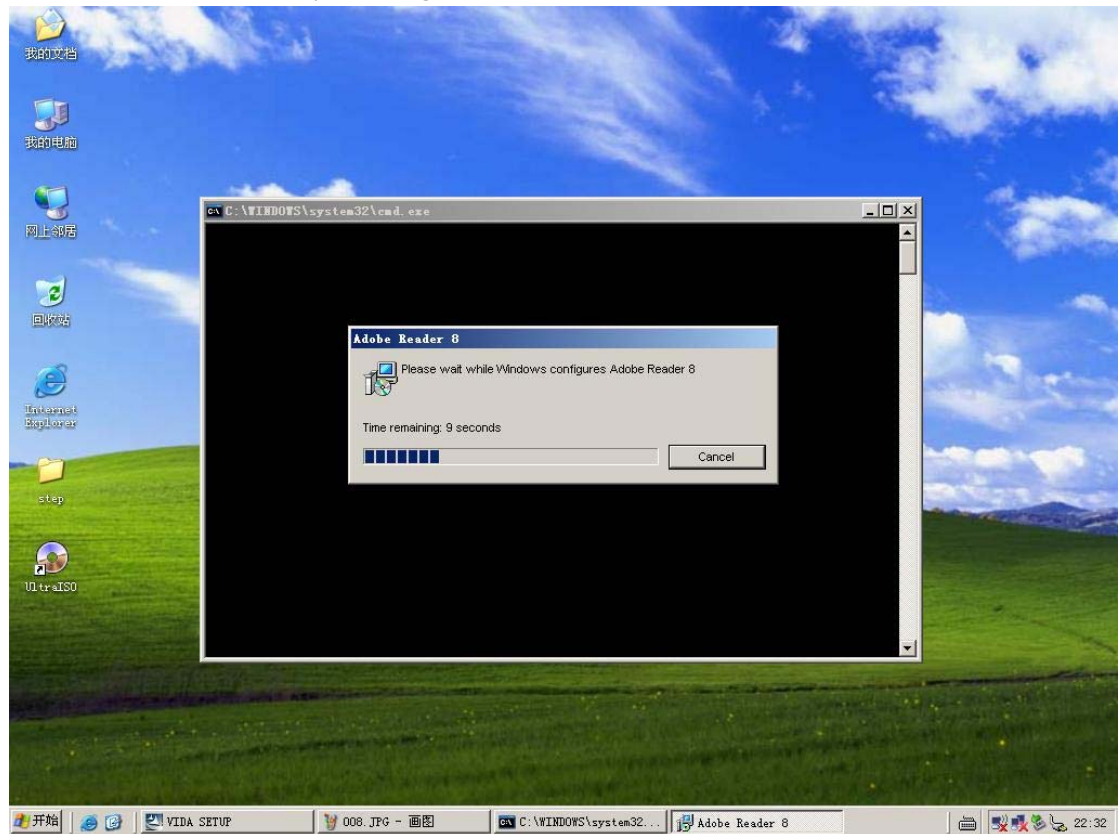
7. 点击【Next】继续安装 Click[next]



8. 选择【Yes】继续安装 choose [yes]

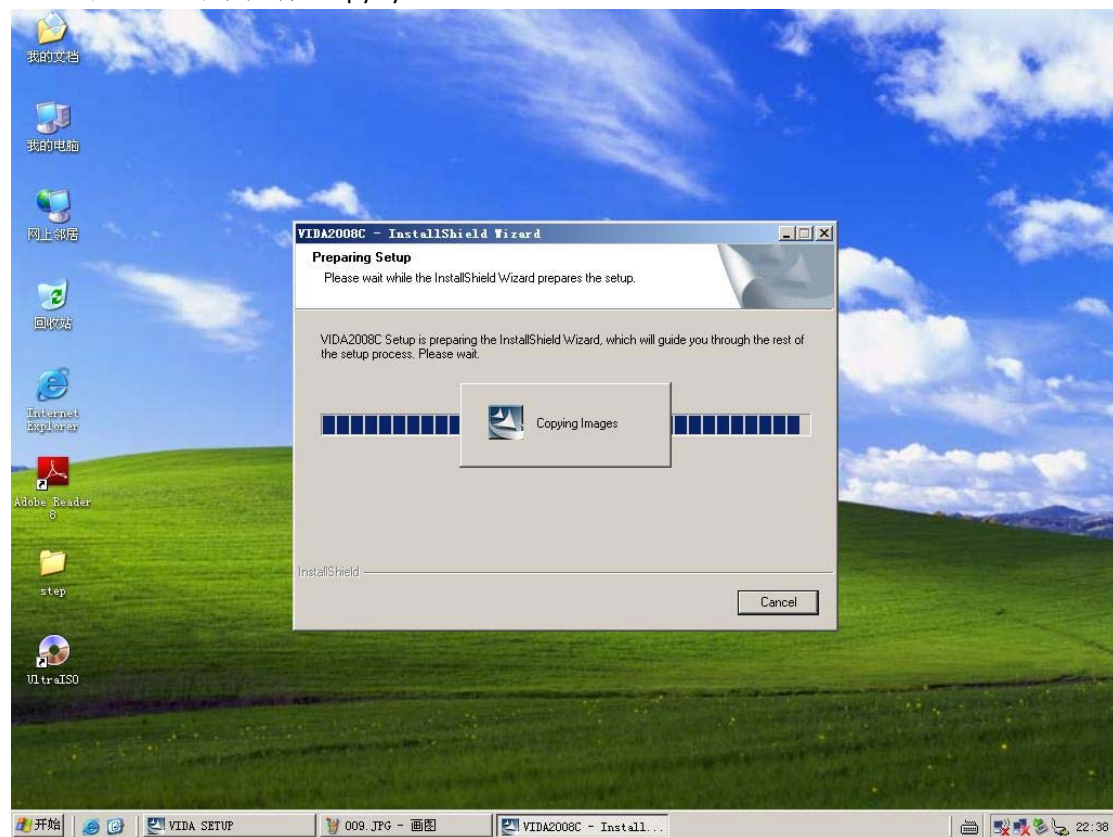


## 9. 安装正在进行 install processing continue

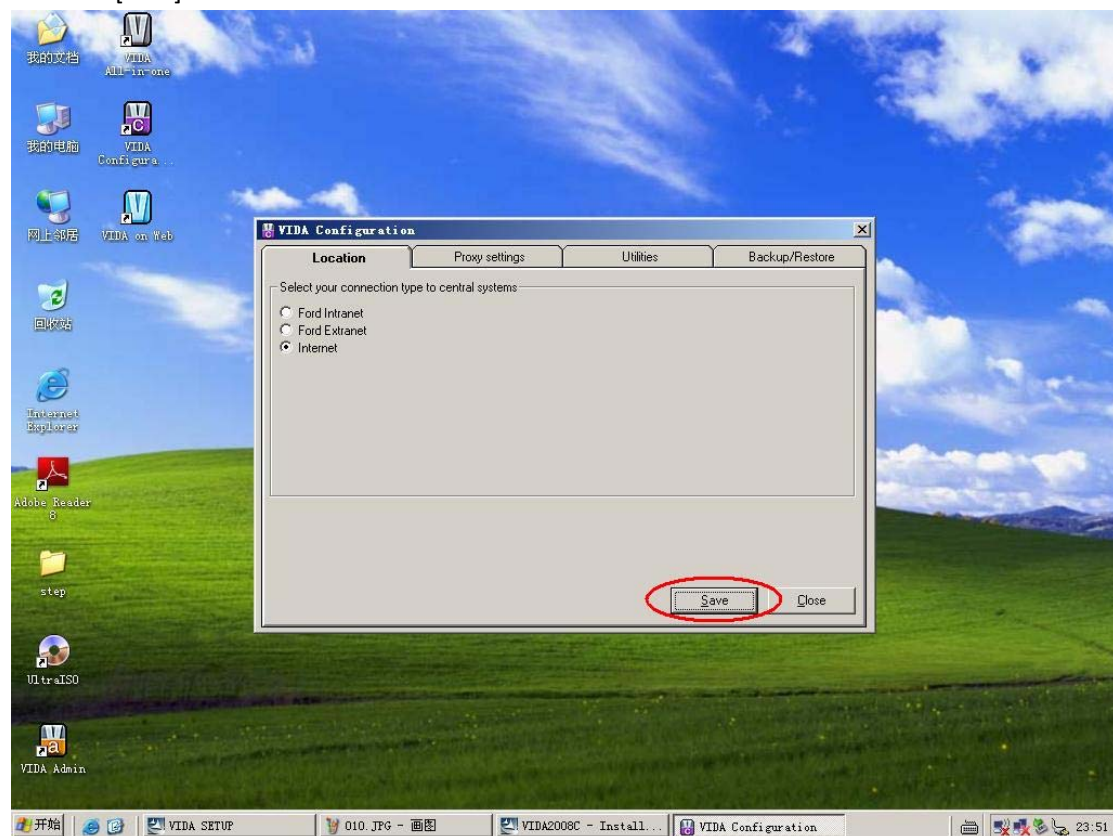




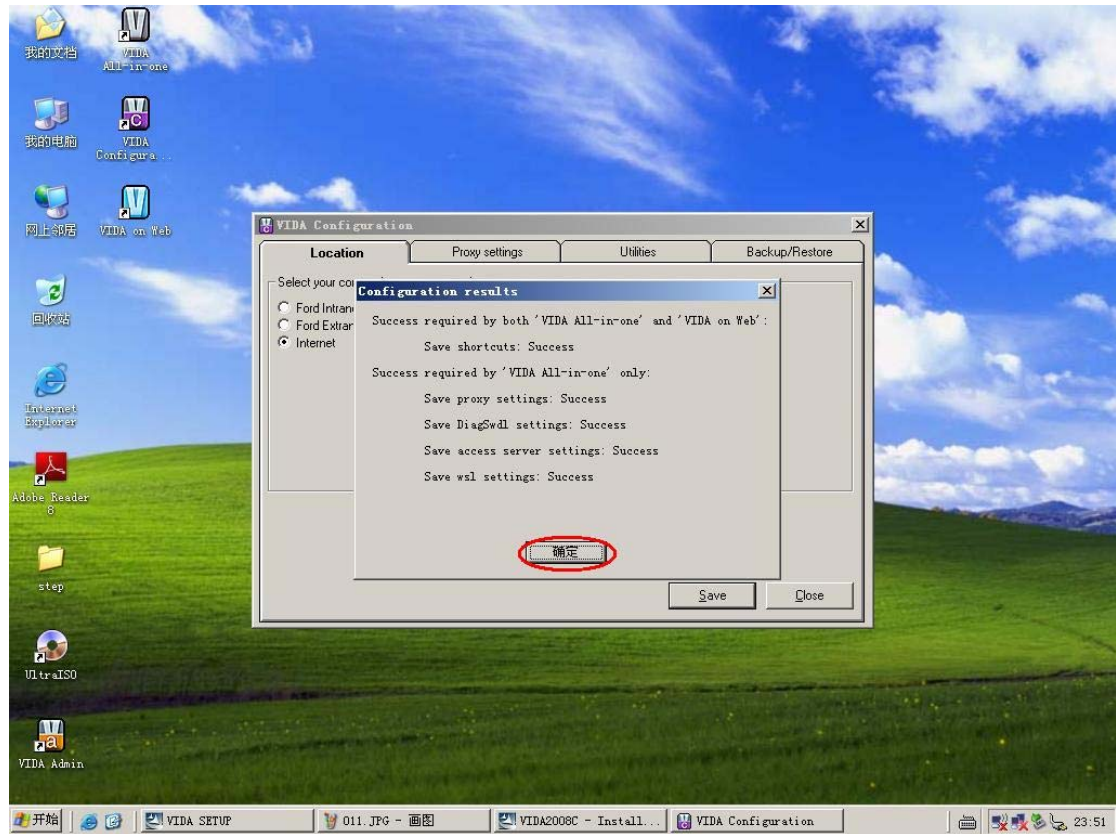
10. 正在 COPY 系统文件 Copy system file now.



11. 设置工作环境，选择【Internet】，点击【Save】 Set working environment, choose [Internet], click [save]

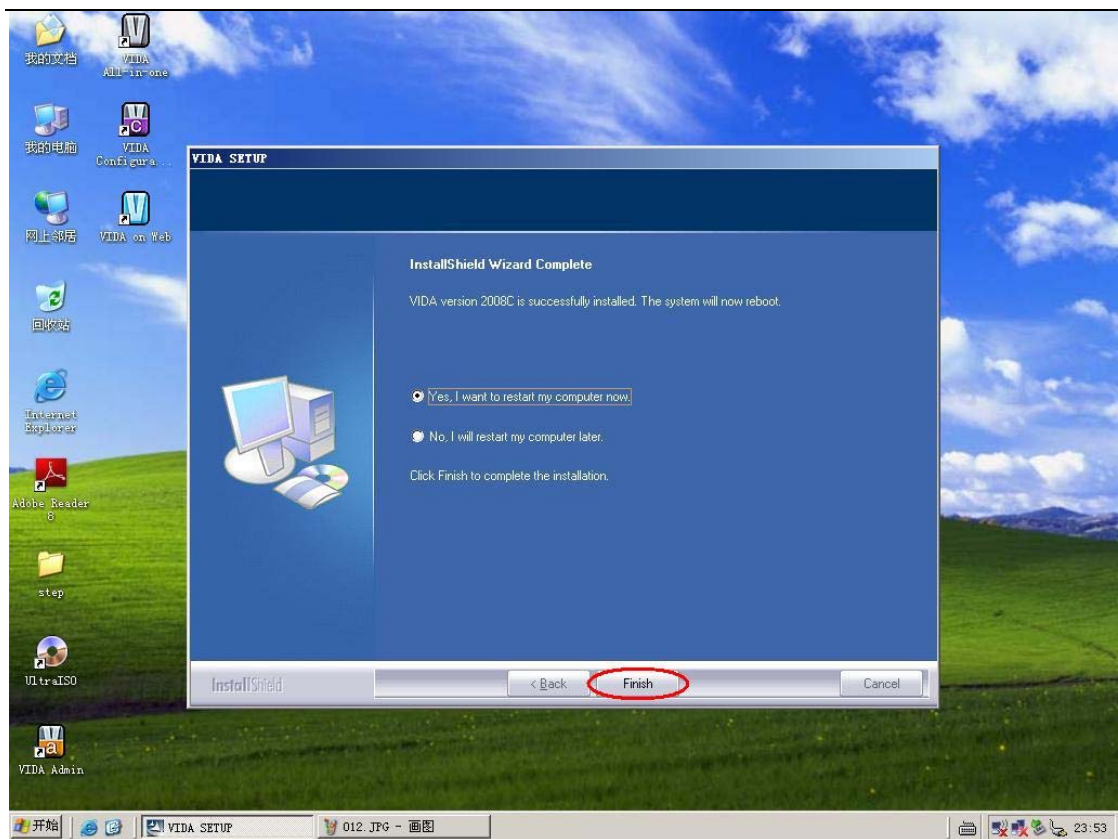


12. 点击【确定】click[enter]

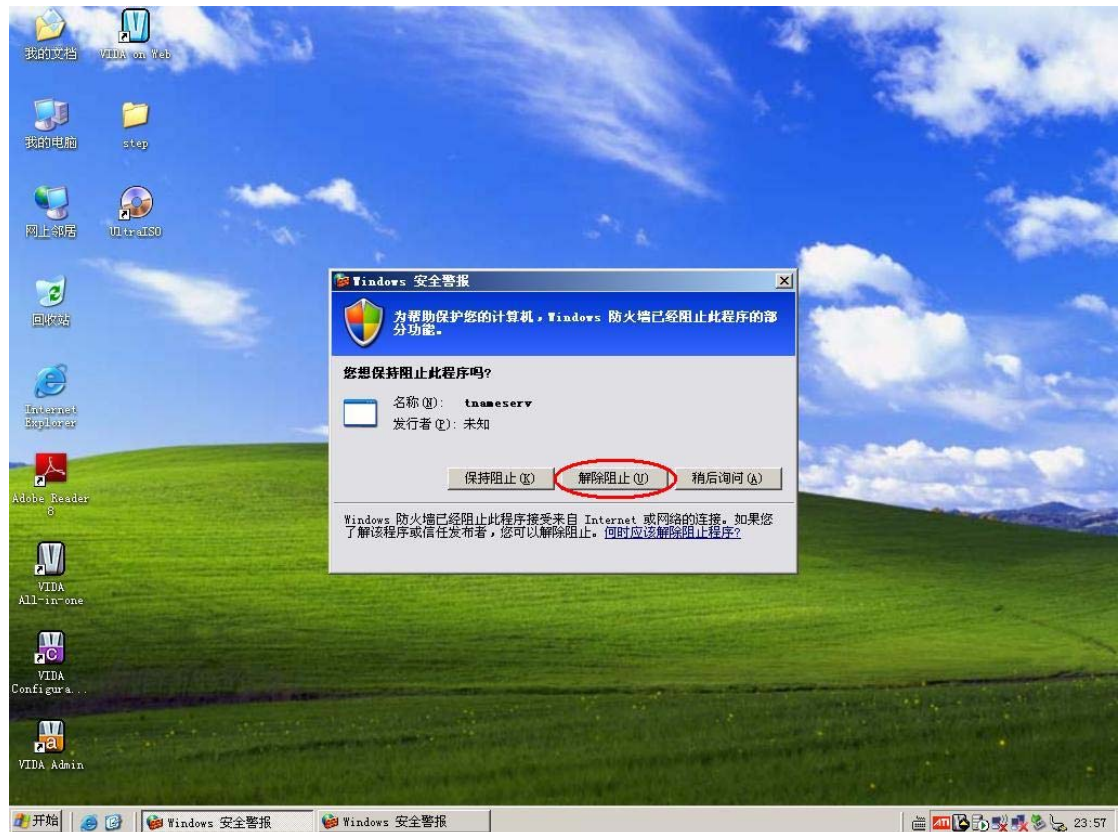


13. 安装完成，重新启动电脑 install finish, restart the computer.





#### 14. 解除阻止 unblock



## 15. 解除阻止 unblock

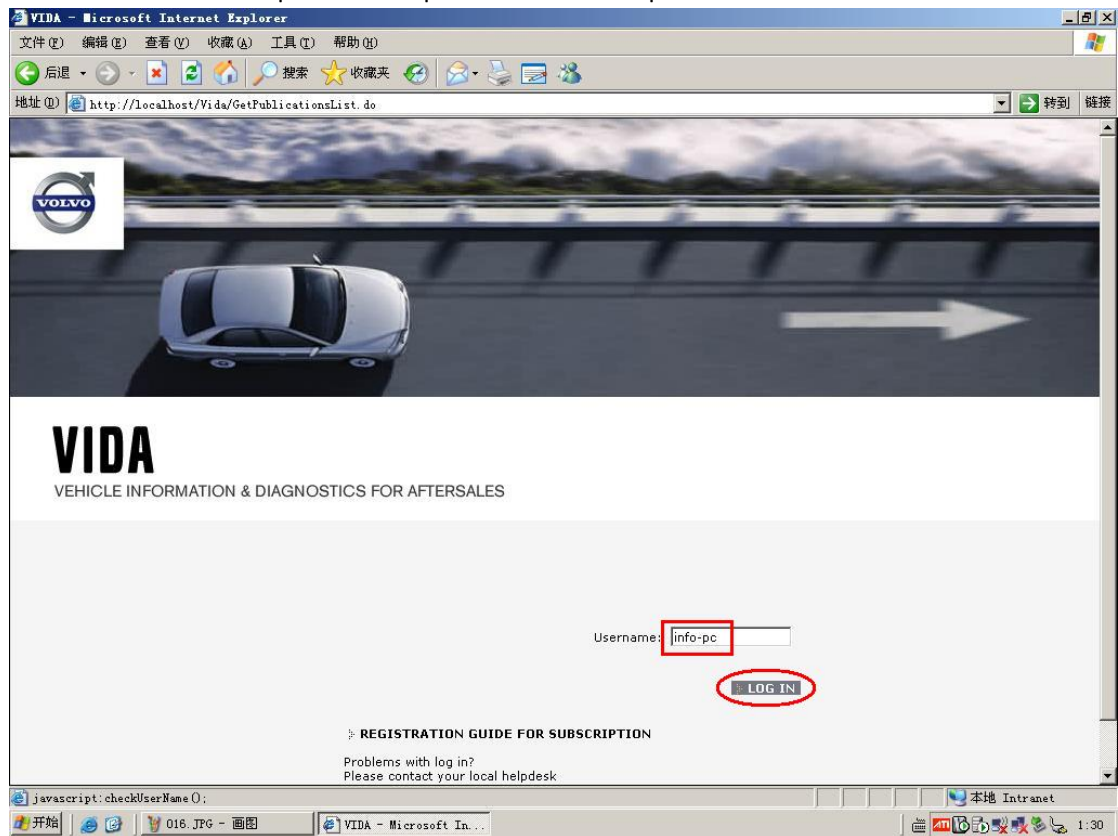


## 16. 打开软件【VIDA All-in-one】open software [vida-all-in-one]



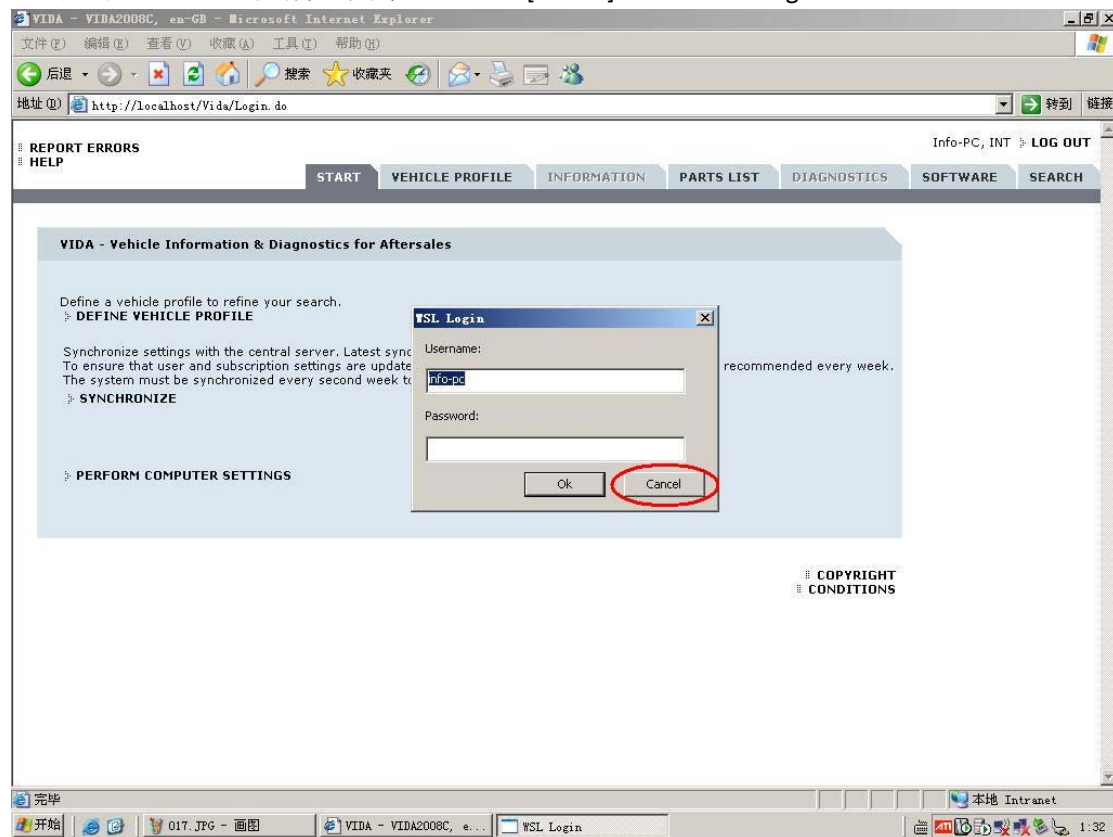


17. 输入用户名: info-pc      input user name:info-pc

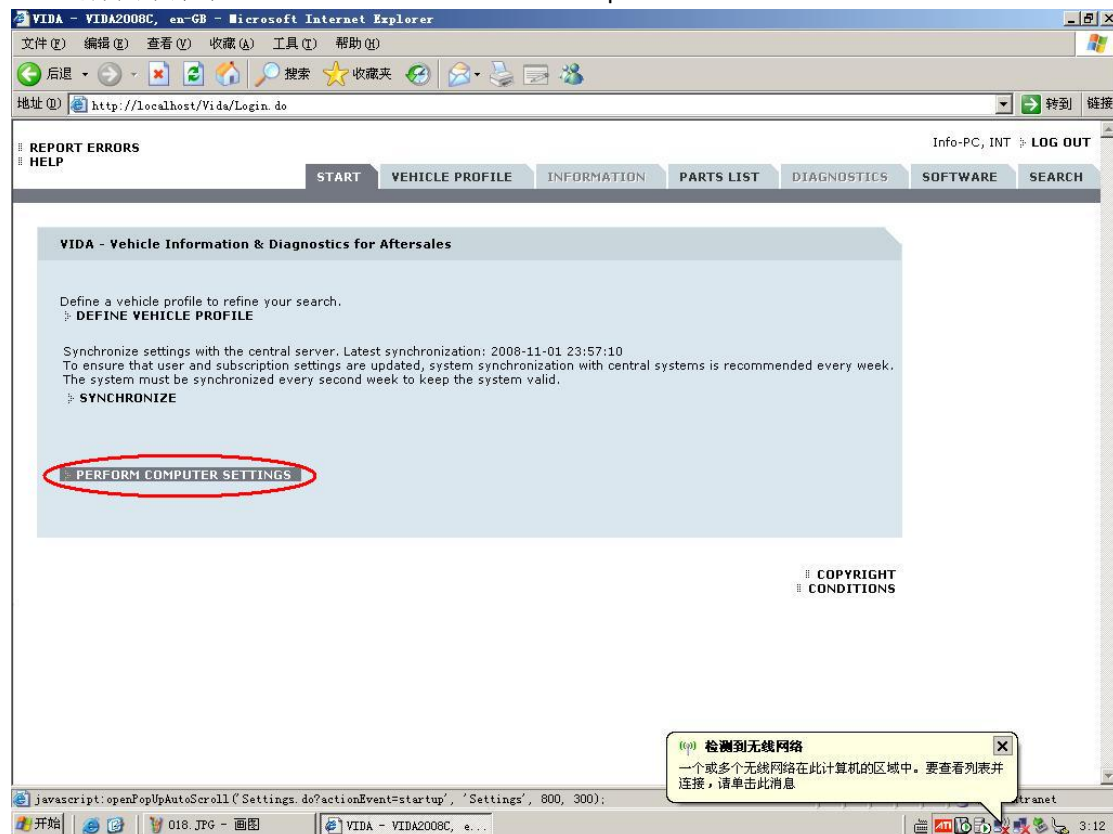




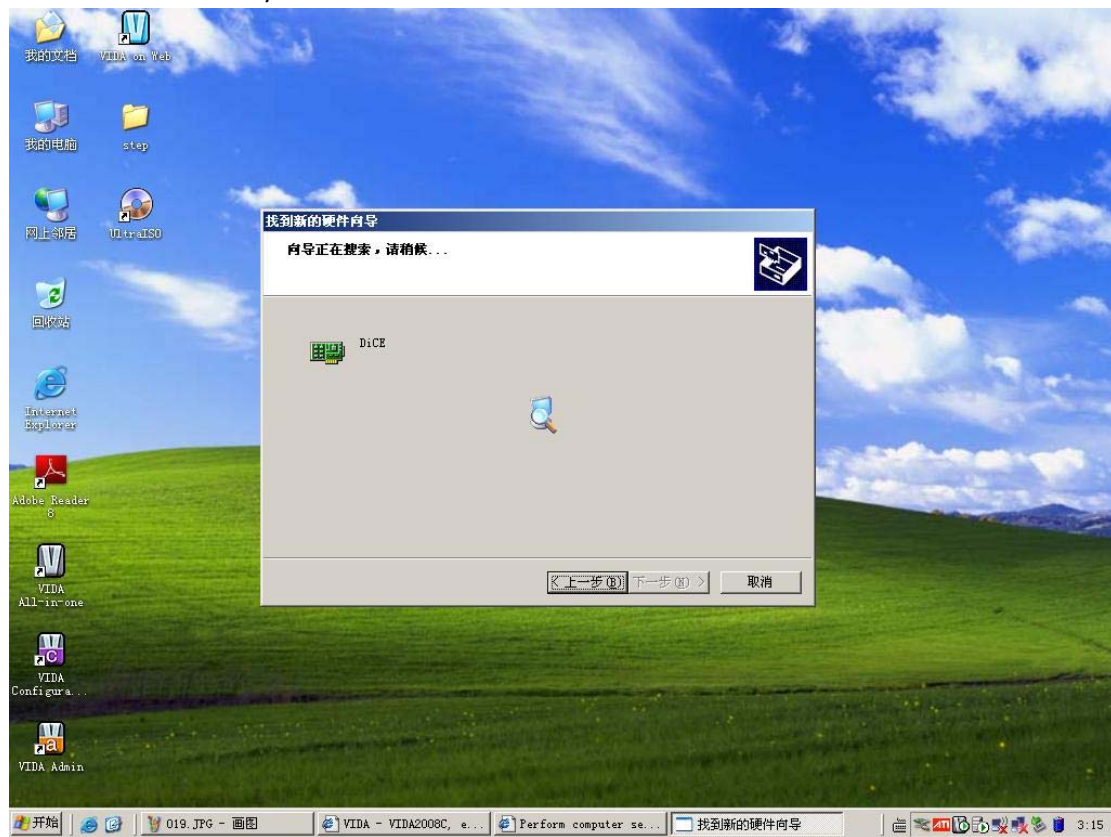
18. 点击【Cancel】取消对话框 click [cancel] to cancel dialog box.



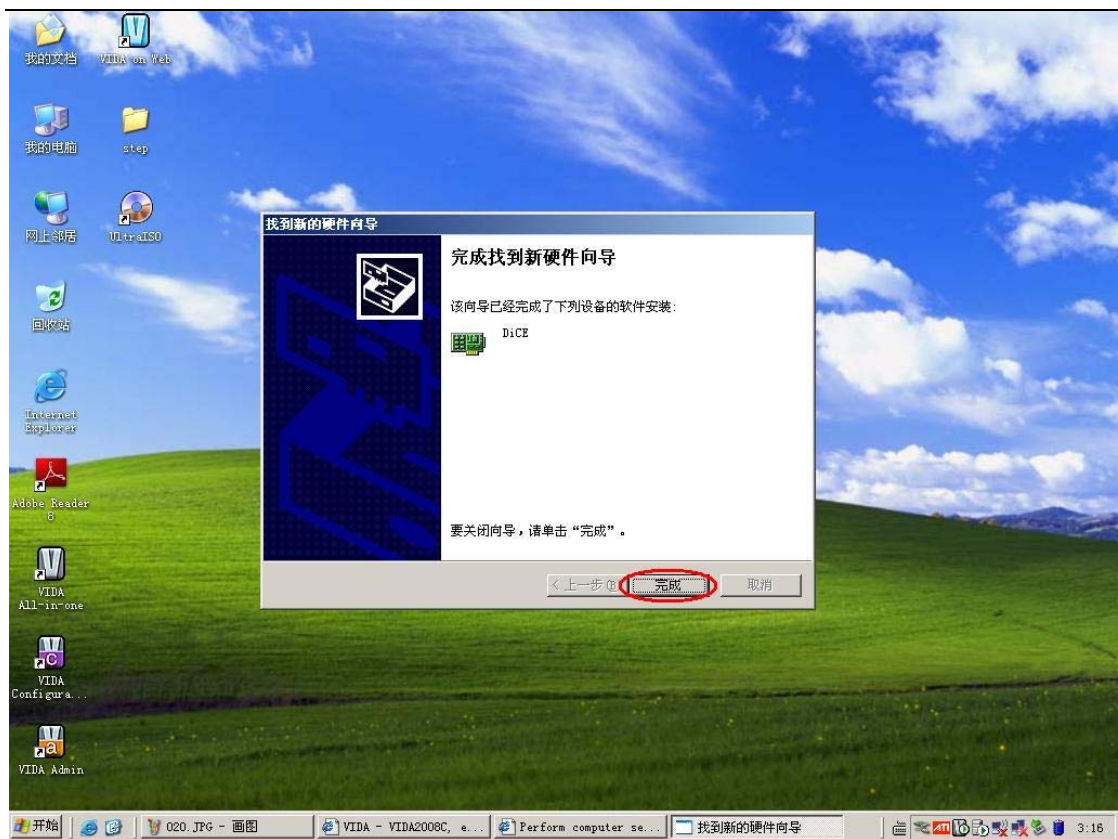
19. 选择图示菜单进入 Choose the menu as the pic show enter



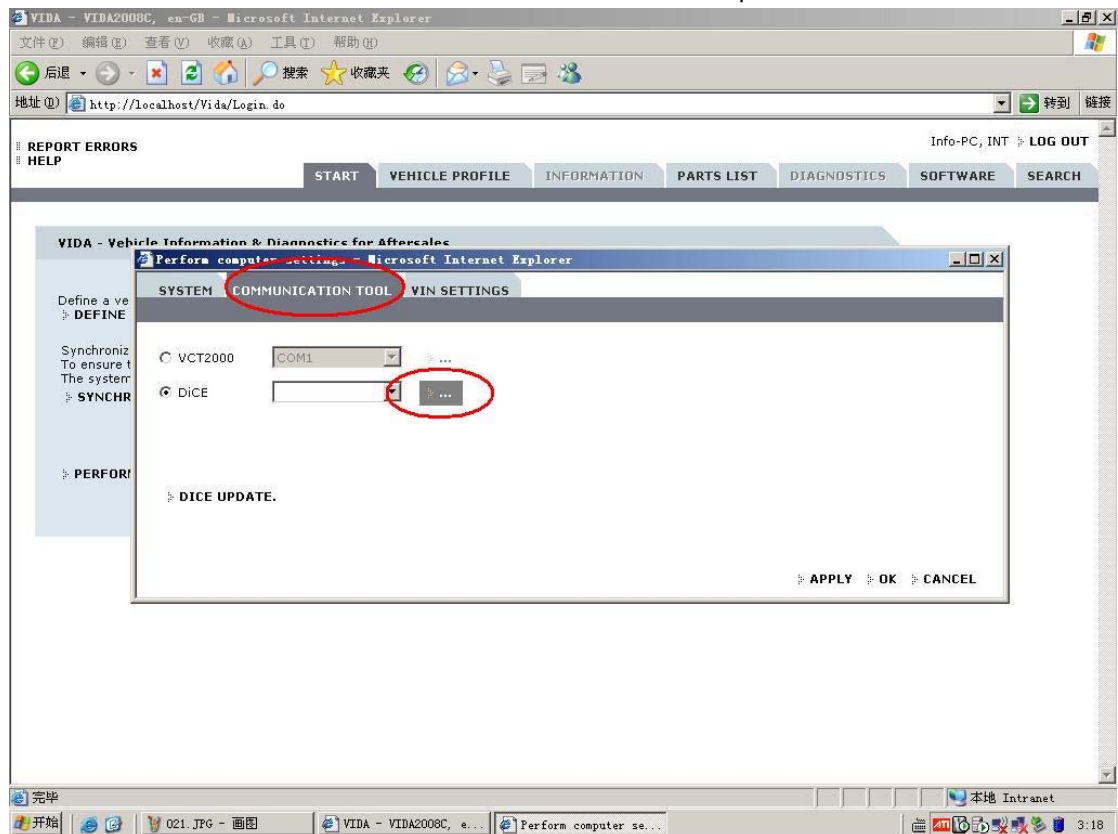
20. 将设备的 16P 头插入汽车，USB 头插入电脑，系统自动完成驱动安装      Input the 16pin connector of Volvo vida dice into the car, USB connect to the computer. System will install the drive automatically.



21. 驱动安装完毕      Drive install finish

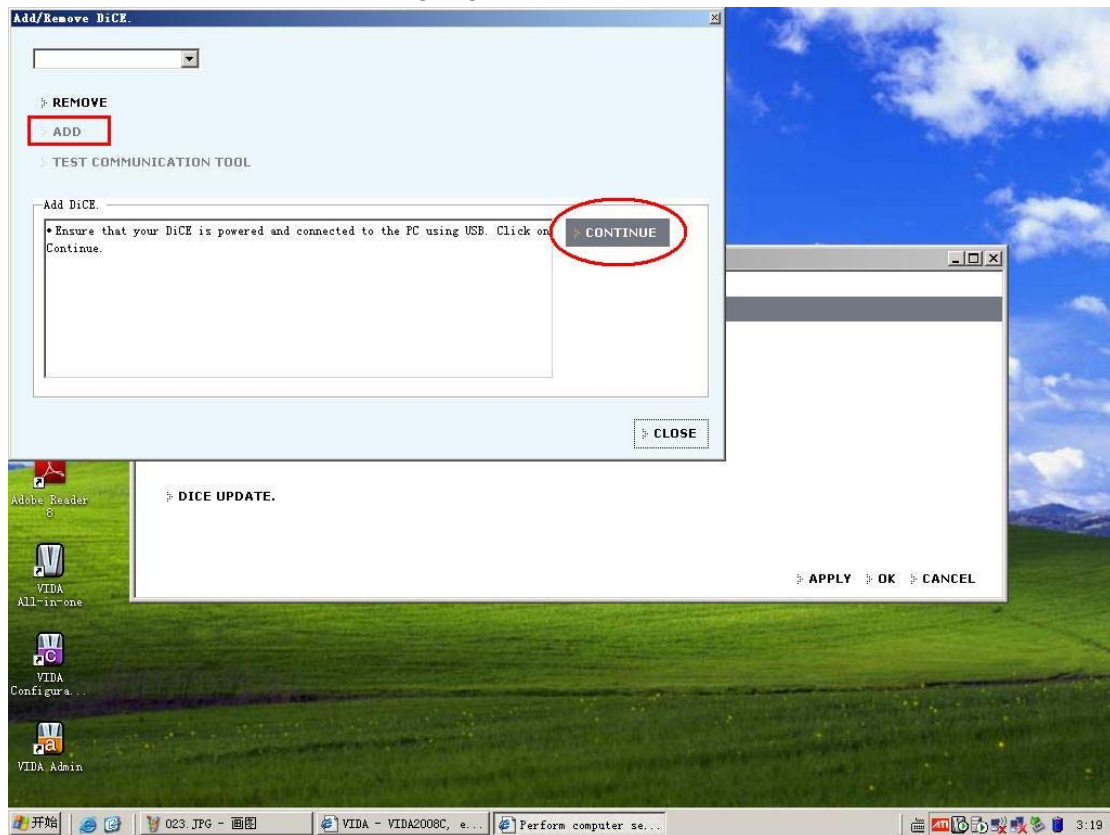


22. 继续点击图示菜单进入设置项 Click the menu into setup choice.

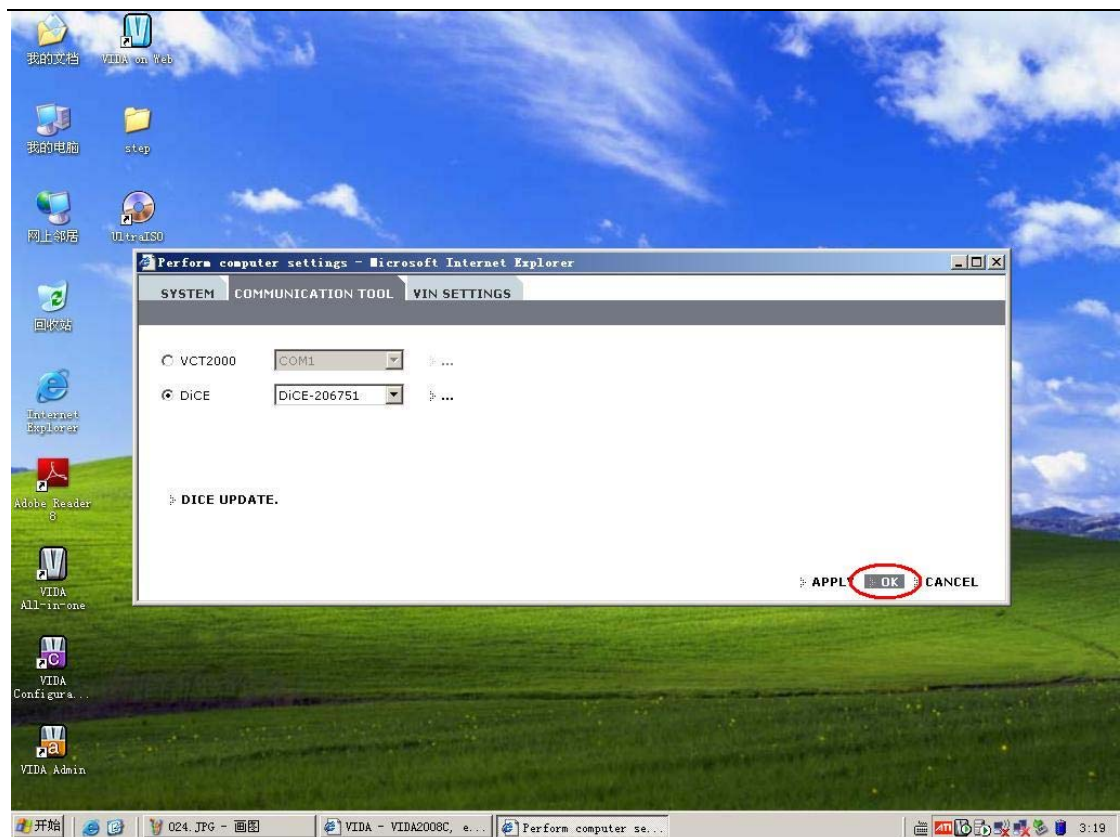




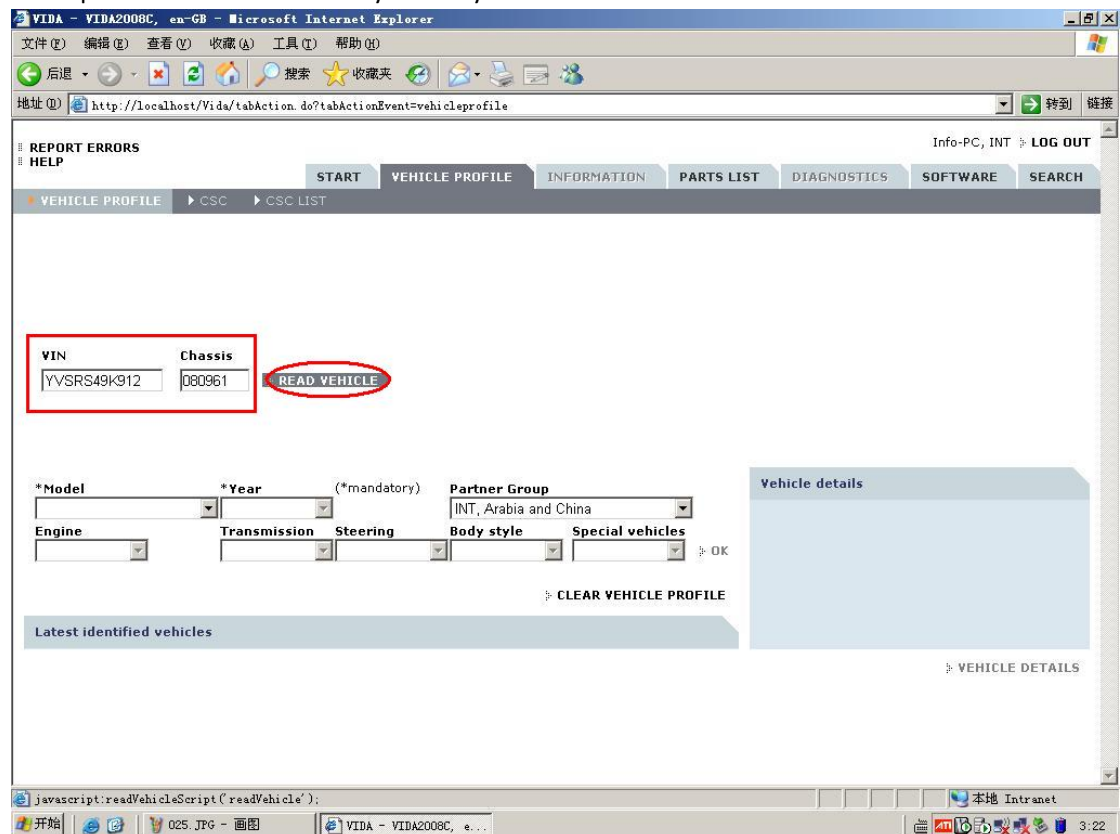
23. 点击【ADD】添加设备 Click [add] to add device.



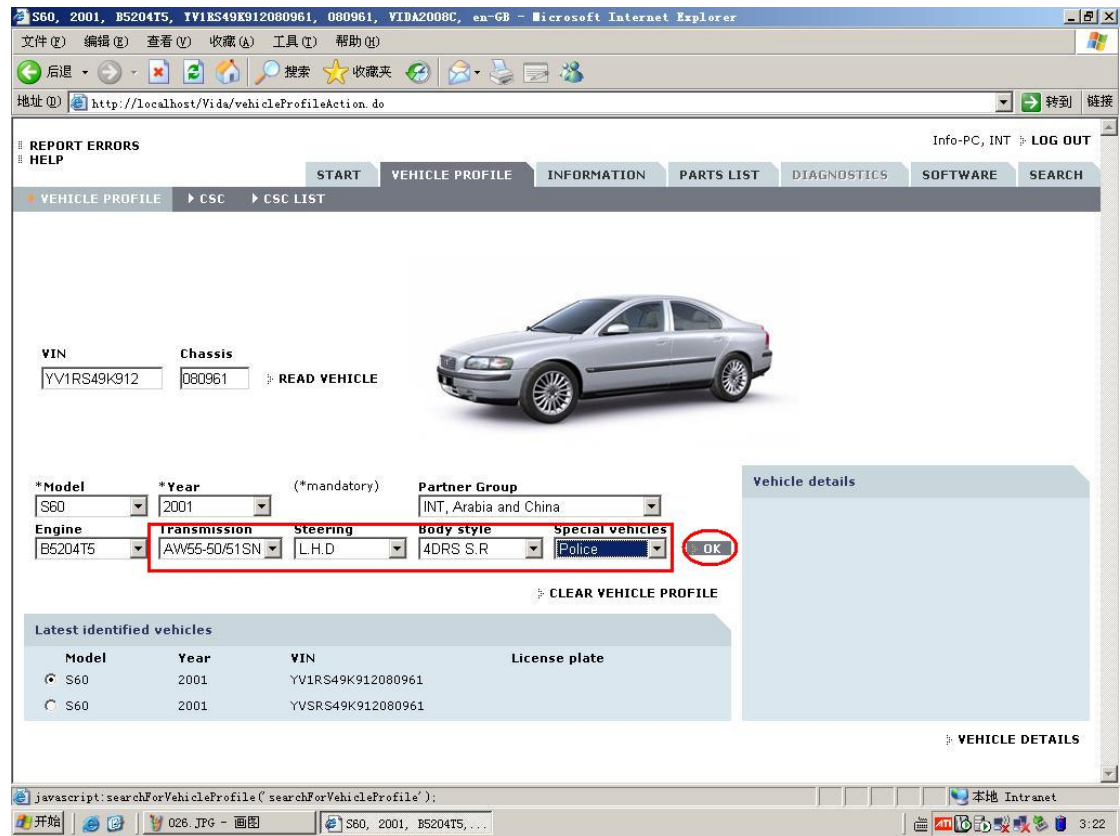
24. 设备找到后, 点击【OK】退出设置项 After find the device, click [ok] quit the setup choice.



25. 点击【VEHICLE PROFILE】菜单，输入准备测试的汽车 VIN 码 Click[vehicle profile] menu, input the car VIN code that you ready to test.

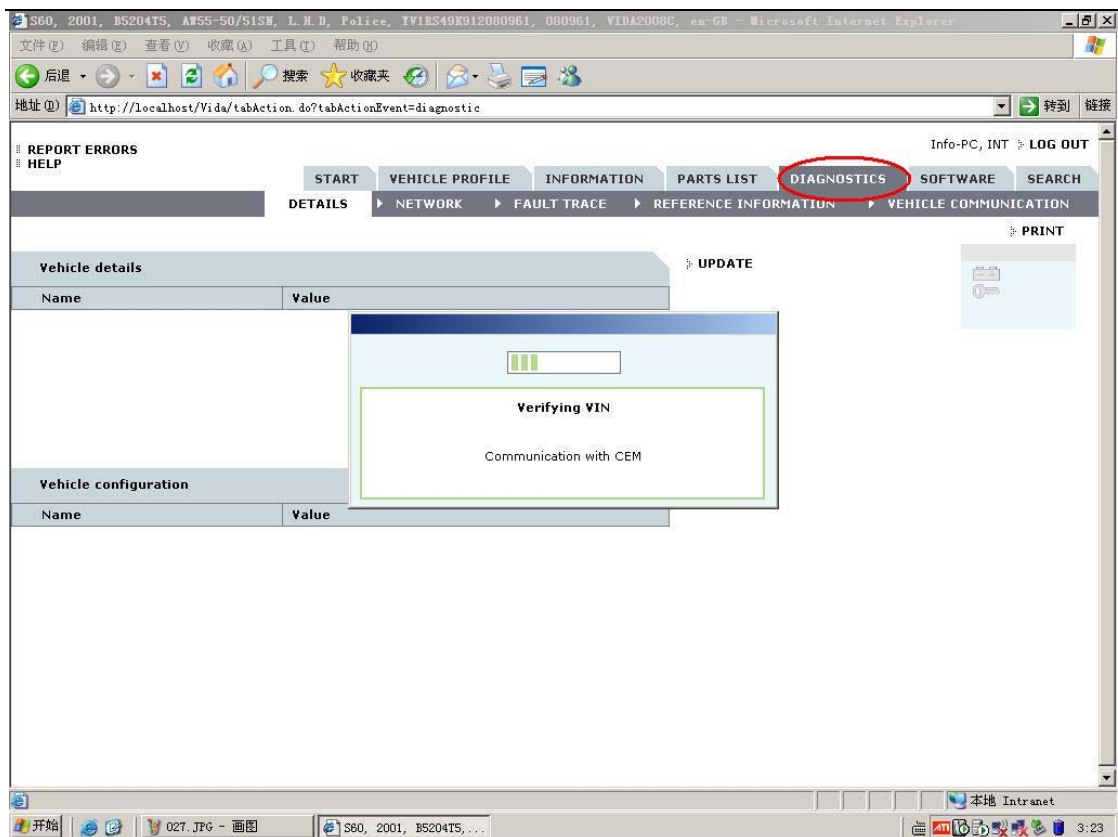


26. 按汽车实际配置选择各个选项, 然后点击【OK】According to the car condition choose every form then click[ok]

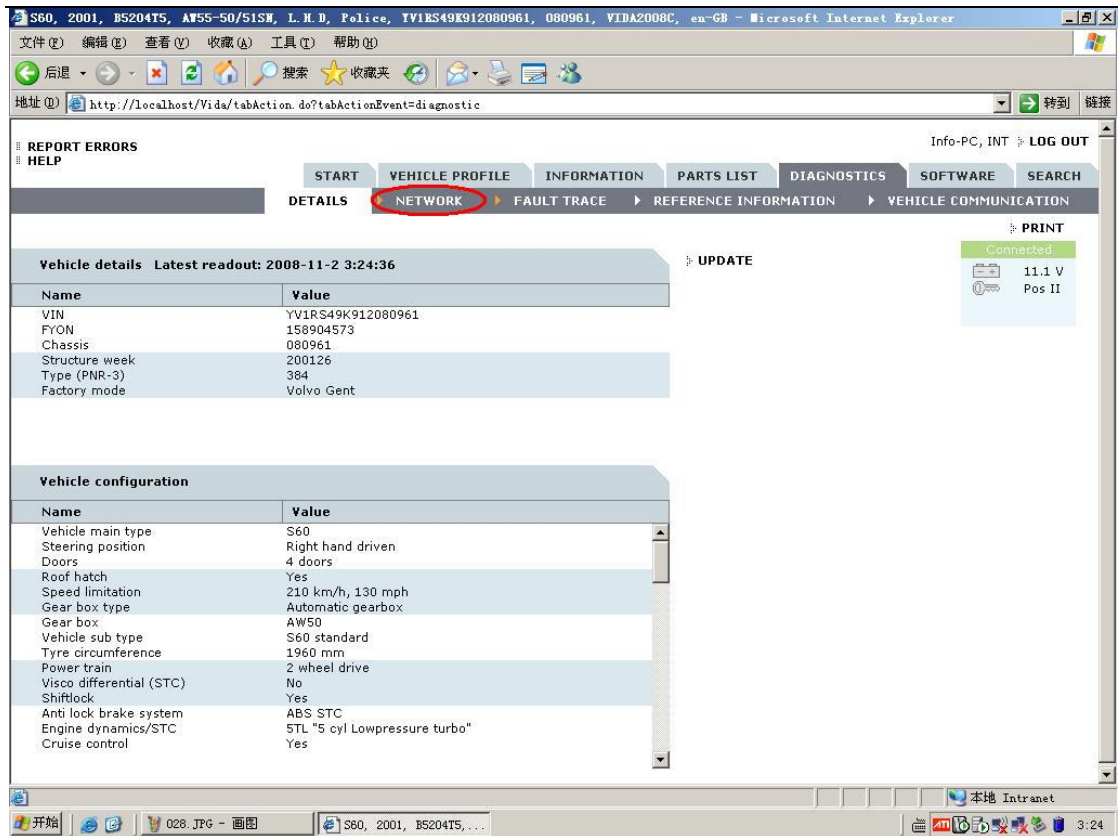


27. 选择【DIAGNOSTICS】菜单, 开始汽车诊断 choose[diagnostics] menu, begin diagnose the car.





28. 自动扫描后显示汽车信息，然后选择【NETWORK】Automatically scan and then show the car information, then choose [network].



29. 选择需要测试的模块，进行详细诊断 choose the model you want to test, do detail test.

Thank you!

