

2025



Over 37 years of Quality Hunting

This trophy was harvested on a two-day guide only hunt, Unit 52, first archery hunt

**K I O W A**

HUNTING SERVICES  
RATON, NEW MEXICO



## WHY HUNT WITH KIOWA HUNTING SERVICE IN NEW MEXICO?

- New Mexico is known for its big game populations and the quality of its animals.
- Kiowa offers both private land and public land hunts. Our private land hunts allow you to purchase across-the-counter licenses and the public land hunt licenses are by application and draw.
- Kiowa offers several levels of public land guided hunts to meet your needs and budget. There are fully guided hunts on either a 1x1 or 2x1 basis with accommodations and meals for five, seven or nine days, depending on weapon type.
- There are two-day guided hunts with accommodations and meals in units 10-12 or 51-52, and lastly, there are also guided only hunts, two days minimum with no accommodations or meals furnished in 90% of the remaining units in New Mexico. With either of the guided only hunt options, two day minimum, you can continue to hunt for the duration of the season after the guided only hunt option ends, with or without accommodations furnished. The two-day guided hunts MUST occur on the first two days that you hunt. **WE ONLY OFFER THE TWO-DAY OPTION ON ELK AND DEER HUNTS, ALL OTHER HUNTS ARE GUIDED FOR THE LENGTH OF THE HUNT, IF LESS THAN FIVE DAYS, OR A MINIMUM OF FIVE DAYS.** You cannot legally hunt prior to the two days guided but can hunt on your own after the two days guided on the deer and elk



hunts.

- The license application includes the use of the Outfitter Number to apply for the draw, which can significantly improve your odds of drawing a license.
- **WE DO NOT CHARGE FOR THE USE OF THE OUTFITTER NUMBER TO APPLY FOR A LICENSE, AND NO CHARGES ARE MADE UNTIL YOU DRAW A LICENSE. WE DO CHARGE FOR THE HUNT, THAT YOU CHOOSE, ONCE YOU DRAW A LICENSE USING OUR OUTFITTER NUMBER, AND WE DO CHARGE IF YOU DECIDE, AFTER DRAWING A LICENSE, TO HUNT WITH ANOTHER OUTFITTER AND REQUEST A TRANSFER FROM US TO THEM.**
- Kiowa Hunting Service is licensed by every National Forest (6) in New Mexico, every Bureau of Land Management District (5) in the State, The State Land Office, and the White Sands Missile Range. We can provide you with a public land hunt for any species and any public location in New Mexico. We are one of the very few outfitters that can give you multiple options to apply for hunts throughout the State of New Mexico. Most outfitters are licensed for one or two National Forests or one or two BLM districts and cannot offer you multiple options.
- Kiowa has been in business for 37 years and maintains a professional relationship with landowners, federal land agencies, and state agencies. Kiowa is licensed by the State of New Mexico and by the public land use agencies upon whose property we hunt.

## WHY HUNT WITH KIOWA HUNTING SERVICE IN COLORADO?



- Kiowa leases one of the premier elk hunting ranches in Colorado. The ranch is located within GMU 83 and is one of the few totally private land game units in the state.
- Kiowa's ranch provides you the opportunity to hunt for and take 300 B&C class bulls. This ranch consistently produces this quality of bull.
- Kiowa provides hunts on this ranch for archery and rifle.
- All Elk hunts, archery, or rifle, are by draw, requiring one Preference point to draw for sure, and we often draw with 0 points. The landowner has license vouchers and will sell them to you to allow for you to buy a license. The vouchers are strictly between you and the landowner.
- Kiowa offers you the opportunity to have a quality experience with use of the lodge, guides, catch and release fishing, and the opportunity to take that "big" bull that you have always thought about.
- Please look over the information contained in our brochure. Contact us for all your hunt and draw needs or if you have any questions.

*Have a safe and fun 2025 hunting season!*

## NEW MEXICO - GUIDED ONLY HUNTS WITH NO SERVICES

This hunt will allow you to apply for a **PUBLIC LAND ELK OR DEER HUNT**, using the outfitter number to increase your odds of drawing a license. A guide will be furnished for the first two days of your hunt, which is mandatory by Game and Fish regulations. You may also book a guided only hunt for one of the following time frames: three days to nine days depending on the weapon type of your hunt.

You may apply in any unit that you would like, unlike other outfitters that only operate in a hand full of units and do not offer you opportunities to apply in different areas. **WE DO NOT OPERATE IN UNITS THAT ARE COMPRISED OF MOSTLY WILDERNESS AREAS, i.e. UNITS 45 AND 16B/22 AND ALSO, WE DO NOT OPERATE IN UNIT 6B.** We can do hunts in 45 and 16B/22 but we do not hunt in the Wilderness areas and do not pack in. We will hunt the exterior areas of the Pecos Wilderness areas in unit 45 and in the case of 16B we will hunt in unit 22 for the time frame that you book.

Kiowa also separates itself from other outfitters, because **WE DO NOT CHARGE ANYTHING FOR THE USE OF OUR OUTFITTER NUMBER**, to increase your draw odds. Kiowa Hunting Service is licensed by ALL of the national forests in the



state and by all of the Bureau of Land Management Districts in the state. We are also licensed by the State Land office.

One guide will be provided for the first two days of your hunt, **MANDATORY BY STATE LAW**, when you use the outfitter number for a tag. Kiowa will furnish one guide for all hunters that are on the successful application. If you want an extra guide to change your's or your group's guide ratio from 4x1 or 2x1 to 2x1 or 1x1

### GUIDED ONLY HUNTS NO SERVICES

#### Hunt Dates

Valid in any unit, EXCEPT units comprised mainly of a wilderness area

#### Hunt Prices

2 days 1x1: \$1,800 + tax  
 2 days 2x1: \$1,500 + tax  
 2 days 3x1: \$1,500 + tax  
 2 days 4x1: \$1,200 + tax  
 5 days 1x1: \$4,500 + tax  
 5 days 2x1: \$3,750 + tax  
 7 days 1x1: \$6,300 + tax  
 7 days 2x1: \$5,250 + tax  
 9 days 1x1: \$8,100 + tax  
 9 days 2x1: \$6,750 + tax

**Application Deadline:**  
**March 19, 2025**

that can be arranged for the charge available for that change for all participants. If you decide you want a guide only hunt we do those hunts on either a 1x1 basis or 2x1 basis only.

Additional guides or additional days must be determined at the time of the booking and may not be modified unless additional personnel are available.



## PARTIALLY GUIDED AND ACCOMMODATED HUNTS

### PUBLIC LAND RIFLE, BOW, AND MUZZLELOADER

These hunts are only offered in **Game Management Units 10, 12, 51 and 52** for all weapons types (rifle, muzzleloader and bow). These hunts are designed for those hunters who are looking for a quality hunt, feel confident about hunting elk on their own, want a guide for part of their hunt, but do not want the hassle of having to bring and set up a camp.

These are the answers to the most frequently asked questions about the partially guided hunts:

1. We have one base camp for units 10 and 12 and we have one base camp for units 51 and 52. This camp is centrally located to access both of the units easily. We do not provide individual camps for groups.



2. We do not pack people into areas.
3. I do not know how many people are in camp as it is based on the draw.
4. In these camps, Kiowa provides the cook, meals, snacks, water and soft drinks and a person knowledgeable of the area to send you to where we feel you will find elk. We provide tents, cots, pads, shower area, lights and heat, and rest rooms or porta-potties.
5. The hunter is responsible for the license, personal gear, bedroll, weapon and transportation to and from camp and during your hunt without the guide.
6. This hunt has a higher success rate than the two-day guided only hunts

and the reason is simple: on the two-day guided only hunts we are there two days and leave... no assistance, no additional knowledge, nothing else is furnished. In the partially guided and accommodated hunt you can receive up to date knowledge of where elk are seen or heard about, additional areas to hunt, and assistance with retrieval, if staff is available. While you are hunting, the staff is out scouting for you. This additional information will allow you to move to areas that have recently been seen with elk, giving you the potential for a higher success rate.

Unless you are intimately knowledgeable of the area you are hunting and know where to look after two days, you are on your own.

#### Unit Descriptions:

The units where we offer this service can be described as follows: **Unit 51** and **Unit 52** are located in North Central New Mexico. **Unit 52** is approximately 300,000 acres in size and **Unit 51** is approximately 380,000 acres. Both units are in a roadless/wilderness area that prohibits off road vehicles and off road traffic of any type. This is a public draw unit and it usually offers a very high opportunity to draw a license with the use of our outfitter number.

#### Units 10 and 12

These areas consist of National Forest, Bureau of Land Management, New Mexico State trust and private land holding. The area is located south and west of Grants, New Mexico and is on the north end of the Gila range. I consider **Unit 10** a sleeper unit. While it has smaller elk numbers, it has a good population of quality elk that has the potential to produce for you the bull of a lifetime. Due to the makeup of the unit, which includes Native American reservations, National monuments, and private land holdings, these areas provide a bull the opportunity to gain age and, consequently, size. We have taken bulls from this unit that are greater than 300 B&C and occasionally one better than 350 B&C.

### PUBLIC LAND ELK HUNTS

#### Hunt Dates

**Units 10, 12, 51, & 52: Archery  
7 Day Hunts**

September 7-13, 2025  
September 18-24, 2025

#### 9 Day Hunts

September 6-14, 2025  
September 16-24, 2025

#### Unit 10 Rifle & Muzzleloader

**Muzzleloader:** October 11-15, 2025  
**Rifle:** October 18-22, 2025

#### Unit 12 Rifle

**Rifle:** October 11-15, 2025  
**Rifle:** October 18-22, 2025  
**Rifle:** October 25-29, 2025

**Rifle:** November 15-19, 2025

#### Unit 51 Rifle & Muzzleloader

**Rifle:** October 11-15, 2025  
**Rifle:** October 18-22, 2025  
**Rifle:** October 25-29, 2025  
**Muzzleloader:** Dec. 6-10, 2025  
**Unit 52 Rifle & Muzzleloader**  
**Muzzleloader:** Oct. 11-15, 2025  
**Rifle:** October 18-22, 2025  
**Rifle:** October 25-29, 2025

#### Hunt Prices

**Rifle/Muzzleloader Elk - 5 days**

**1 hunter:** \$2,600 + tax  
**2-3 hunters:** \$2,400 + tax  
**4+ hunters:** \$2,200 + tax

**Archery Elk - 7 day hunts**

**1 hunter:** \$3,200 + tax  
**2-3 hunters:** \$2,800 + tax  
**4+ hunters:** \$2,400 + tax

**Archery Elk - 9 day hunts**

**1 hunter:** \$3,800 + tax  
**2-3 hunters:** \$3,500 + tax  
**4+ hunters:** \$3,200 + tax

**Application Deadline:  
March 19, 2025**

**Unit 12** is predominately private land and checkerboard areas. There are good areas of Bureau of Land Management properties located on East and South sides of the hunt unit. This unit is known for big bulls but the area is checkerboarded and you need to make sure that you know where you are as you hunt. The drawing odds for this unit is difficult.

DO YOU HARVEST ANY ANIMALS DURING THE 2-DAY HUNTS? YES!

OUR 2024 SEASON TROPHIES

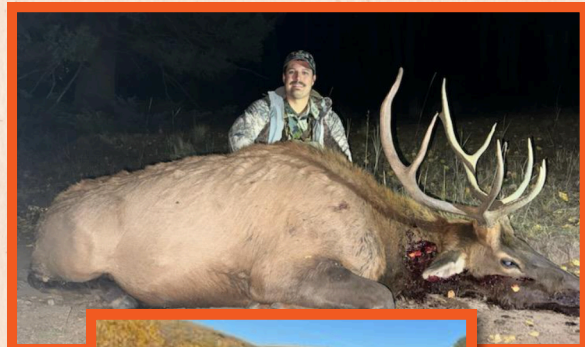


AND THERE ARE MORE ANIMALS, BUT NO MORE ROOM ON THE PAGE!

575-445-9330 [kiowahunting.com](http://kiowahunting.com)

**GUIDED ELK HUNTS - FULLY ACCOMMODATED**

**CARSON NATIONAL FOREST**



Units 51 and 52 are our main units on the Carson, but we offer hunting in all units of the Carson National Forest, including units 2, 49, 53, and the Valle Vidal in unit 55A. We offer hunts utilizing all weapon types: rifle, muzzleloader, and archery. The units on the Carson are all very large running from 100,000 acres to almost 400,000 acres. The vegetation runs from timberline to sagebrush flats so a hunter can find an area that suits his capabilities. Most of these units have Motor Vehicle restrictions and there is no off road or minimal road traffic allowed. For a description of units 51 and 52 see the previous page.

These units offer the hunter easy access, an excellent elk population, and limited hunting pressure. This is a public draw unit and it usually offers a good opportunity to draw a license with the use of the outfitter number.

- **The cost of hunt includes:** the use of the Outfitter Number for drawing a license, the appropriate number of guides, camp accommodations, meals, courtesy transportation during the hunt, retrieval of game and capping for trophy preparation of the animal.

- **The hunter is responsible for:** applying for the license (with our help), their personal items including bedroll and weapon, motel accommodations or any accommodations that are not in our camp, personal gear and transportation to and from the camp to the hunt area.

**CARSON NATL. FOREST  
UNIT 51 & 52**

**Hunt Dates**

**Unit 51 and 52 Archery**

**7 Day Hunts**

September 7-13, 2025

September 18-24, 2025

**9 Day Hunts**

September 6-14, 2025

September 16-24, 2025

**Unit 51 Rifle & Muzzleloader**

**Rifle:** October 11-15, 2025

**Rifle:** October 18-22, 2025

**Rifle:** October 25-29, 2025

**Muzzleloader:** Dec. 11-15, 2025

**Unit 52 Rifle & Muzzleloader**

**Muzzleloader:** Oct. 11-15, 2025

**Rifle:** October 18-22, 2025

**Rifle:** October 25-29, 2025

**Hunt Prices**

**Archery**

**7 Day 2x1:** \$5,800 + tax

**7 Day 1x1:** \$6,800 + tax

**9 Day 2x1:** \$7,500 + tax

**9 Day 1x1:** \$8,750 + tax

**Rifle & Muzzleloader**

**2x1:** \$5,000 + tax

**1x1:** \$6,000 + tax

**Application Deadline:  
March 19, 2025**

**LINCOLN NATL. FOREST**  
**UNITS 34, 36 & 37**

**PUBLIC LAND ELK**

**LINCOLN NATIONAL FOREST - UNIT 34, 36, AND 37**

**Hunt Dates**

**Unit 34, 36, and 37 Archery Hunts**  
**7 Day Hunts**

September 7-13, 2025  
 September 18-24 2025

**9 Day Hunts**

September 6-14, 2025  
 September 16-24, 2025

**Unit 34**

**Rifle, Youth only, or Mobility**

**Impaired:** October 11-15, 2025

**Muzzleloader:** Oct. 18-24, 2025

**Rifle:** October 25-29, 2025

**Unit 36**

**Muzzleloader:** October 11-15, 2025

**Rifle:** October 18-22, 2025

**Rifle:** November 1-5, 2025

**Unit 37**

**Rifle:** October 1-5, 2025

**Rifle:** October 18-22, 2025

**Hunt Prices**

**Archery**

**7 Day - 1x1:** \$6,800 + tax

**7 Day - 2x1:** \$5,800 + tax

**9 Day - 1x1:** \$8,750 + tax

**9 Day - 2x1:** \$7,500 + tax

**Rifle & Muzzleloader**

**2x1:** \$5,000 + tax

**1x1:** \$6,000 + tax

**Application Deadline:**  
**March 19, 2025**



We offer archery, muzzleloader and rifle hunts in the Lincoln units. These units are known for big bulls and excellent numbers. The guides for these units are very knowledgeable of the hunt area, are excellent hunters, and have a history of getting clients on big bulls. These units are excellent, making them extremely popular and in high demand by sportsmen. Because of this it can be very difficult to draw a tag but should definitely be used as one of your three choices. These units have some of the best bull-to-cow ratios of any unit in the state. The odds of you drawing this tag are far greater than those of the Gila Units. Game Management Unit 36 is the easiest to draw, of the Lincoln units, and has the highest bull-to-cow ratio in the state at 71:100, according to Game and Fish. This is your chance to draw a tag and have a guided hunt to go with it for the cost of the landowner tag alone. At a minimum, you



should make this one of your three choices on your application. We only offer fully guided and accommodated hunts **OR** guided only hunts with no accommodations or meals for a minimum of two days or greater in these units.

• **The cost of hunt includes:** the use of the Outfitter Number for drawing a license, the appropriate number of guides, camp accommodations, meals, courtesy transportation during the hunt, retrieval of game and capping for trophy preparation of the animal.

• **The hunter is responsible for:** applying for the license (with our help),

their personal items including bedroll and weapon, motel accommodations or any accommodations that are not in our camp, personal gear and transportation to and from the camp to the hunt area.



**GILA NATL. FOREST**

**Hunt Dates**

**All Gila Units**

**Archery Hunts - 7 days**

September 7-13, 2025  
 September 18-24, 2025

**Archery Hunts - 9 days**

September 6-14, 2025  
 September 16-24, 2025

**Rifle, Muzzleloader and MI Hunts**

Check Game and Fish brochure for dates corresponding to your choice of unit. Hunts are available in any Game Management unit within the Gila National Forest, EXCEPT within the wilderness area in units 16B-22.

**Hunt Prices**

**Archery**

**7 Day - 2x1:** \$5,800 + tax

**7 Day - 1x1:** \$6,800 + tax

**9 Day - 2x1:** \$7,500 + tax

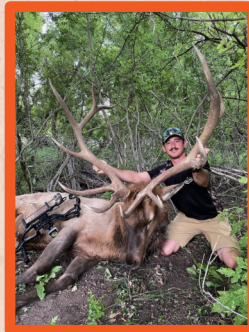
**9 Day - 1x1:** \$8,750 + tax

**Rifle & Muzzleloader**

**2x1:** \$5,000 + tax

**1x1:** \$6,000 + tax

**Application Deadline:**  
**March 19, 2025**



**GILA NATIONAL FOREST**

These are THE bulls that you hear about. In the past the Kiowa team has taken bulls up to 383 and our hunters often take bulls in the 340 and 350 class. Everyone wants to hunt the Gila and some do. Great hunts, but understand that if you apply for these tags, use one choice and not three because the odds of drawing a Gila tag are around 5% or less. Not all Gila units are equal and some units and hunts are easier to draw than others. The best way to determine the easier to draw units is to give us a call and we can discuss them. Great hunt,



great guides and great bulls if you draw, but consider additional options for your application.

We only offer fully-guided and accommodated hunts **OR** 2-day guided hunts with no

accommodations or meals in these units.

• **The cost of the hunt includes:** Camp accommodations if utilized, meals, courtesy transportation during the hunt, assistance in retrieval of the harvested animal and the capping and trophy preparation of the animal.

• **The hunter is responsible for:** Applying for the license (with our help), motel accommodations or any accommodations not in our camp, and personal gear.



45-9330 [kiowahunting.com](http://kiowahunting.com)

## CIBOLA NATIONAL FOREST - UNITS 10 AND 12

These units are known for big bulls and a good number of elk. The number of elk in these units are not as high as in other units, however, the size of the units, the national monuments, closed areas, and private land holdings within the hunt unit allow for bulls to gain age and, consequently, size. The guides for these units are very knowledgeable of the hunt area, are great hunters, and



have a history of getting clients on bulls.

We have hunted this unit for over 13 years and the crew that was there on the first year is still there today. The guides live and recreate in this unit. They know the area intimately because it is their backyard. Taking bulls that are up to 340 B&C, as we did this year, is not an uncommon occurrence as we have taken that caliber

of bulls continually over the years that we hunted it. The reason that we take bulls like this is that the guides know the area intimately and scout it year-round and have a very great knowledge of the elk habits of the herd and know the little areas where they can disappear to.

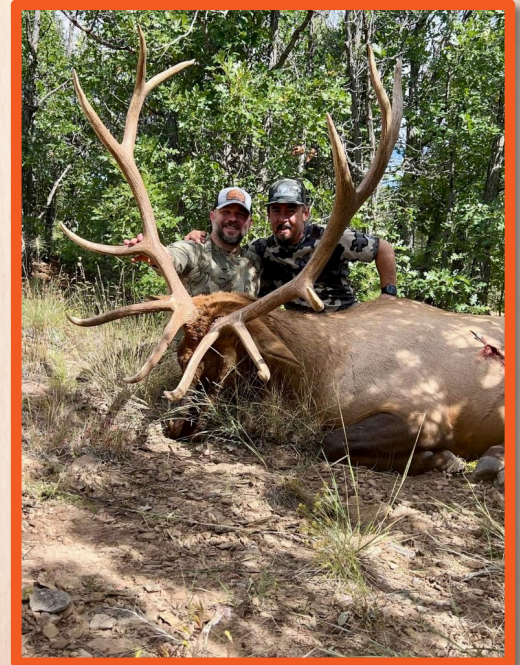
This area is lower in elevation than other units, the terrain is easier than some units, and there is a network of roads for access throughout the unit. The camp is located on private property and offers easy access to most of the unit. The camp is located on the south end of unit 10 and we will use this



camp to access the unit 12 hunts. This unit has normal dates for archery hunts but only one muzzleloader and one rifle hunt, which is another reason that the elk have a chance to get bigger here. We offer all four types of hunts on the Cibola: a guide only hunt with no accommodations or meals for a minimum of two days or greater, a 2-day guided hunt with no accommodations, a 2-day guided hunt with accommodations and meals, and a fully guided hunt with accommodations and meals for either five, seven or nine days.

- **The cost of hunt includes:** the use of the Outfitter Number for drawing a license, the appropriate number of guides, camp accommodations, meals, courtesy transportation during the hunt, retrieval of game and caping for trophy preparation of the animal

- **The hunter is responsible for:** applying for the license (with our help), their personal items including bedroll and weapon, motel accommodations or any accommodations that are not in our camp, personal gear.



### CIBOLA NATL. FOREST UNITS 10 & 12

#### Hunt Dates

##### Unit 10 or 12 Archery Hunts

###### 7 Day Hunts:

September 7-13, 2025  
September 18-24, 2025

###### 9 Day Hunts:

September 6-14, 2025  
September 16-24, 2025

##### Unit 10 Rifle & Muzzleloader Hunts

**Muzzleloader:** October 11-15, 2025

**Rifle:** October 18-22, 2025

##### Unit 12 Rifle Hunts

October 11-15, 2025

October 18-22, 2025

October 25-29, 2025

November 15-19, 2025

#### Hunt Prices

##### Archery

7 Day - 2x1: \$5,800 + tax

7 Day - 1x1: \$6,800 + tax

9 Day - 2x1: \$7,500 + tax

9 Day - 1x1: \$8,750 + tax

##### Rifle & Muzzleloader

2x1: \$5,000 + tax

1x1: \$6,000 + tax

**Application Deadline:  
March 19, 2025**







## SANTA FE NATIONAL FOREST

The Santa Fe National Forest is in the middle of the state and is made up of part or all the following units: 5B, 6A, 6C, 43, and 45. The forest consists of 1.6 million acres and the elevations run from 5000 feet to 13,000 feet. The unit 6B is the Valles Caldera and it is surrounded by units of the Santa Fe National Forest, it is a National Preserve and an entity on to itself. The Santa Fe National Forest also adjoins the Jicarilla Apache Reservation and holds some great animals. We currently do not operate within the wilderness of unit 45. We are licensed to work in the wilderness and can enter and hunt the wilderness but due to logistics we have elected to not work in the wilderness but in the surrounding areas.

We have hunted the Santa Fe National Forest and have done well in the areas. We have the manpower to provide you either a guided only hunt, minimum of two days, or a fully guided hunt if you desire. Some of the units in the Santa Fe are easier to draw than other units and offer you the opportunity to draw an elk hunt. The elk population in these units is good and we have had good success hunting them. We offer all two types of hunts on the Cibola: Guide only hunts



with a two day minimum and fully guided hunt with accommodations and meals.

- **The cost of hunt includes:** The use of the Outfitter Number for drawing a license, the appropriate number of guides, camp accommodations, meals, courtesy transportation during the hunt, retrieval of game and capping for trophy preparation of the animal.

- **The hunter is responsible for:** applying for the license (with our help), their personal items including bedroll and weapon, motel accommodations or any accommodations that are not in our camp, personal gear.

### SANTA FE NATIONAL FOREST

#### Hunt Dates

**Archery, Muzzleloader & Archery**  
Dates are dependent on the weapon and the unit drawn

#### Hunt Prices

**Guide only hunts**

Prices are on page 3

**Fully Guided hunts**

Prices are the same as other forests listed previously

**Application Deadline:**  
**March 19, 2025**

## PRIVATE LAND (GUARANTEED LICENSES) - BULL ELK RIFLE

These are Guaranteed License hunts that occur on private ranches in New Mexico and Colorado. All the following ranches have the potential to produce 300 B&C class bulls for the hunters.

Hunts begin in early September with archery hunts and in early October with rifle and muzzleloader to take advantage of the rut and the bugling of the bulls. You will be hunting where we know there are animals and we have a high percentage of shot opportunity for a hunter to harvest bulls.

Each private land ranch differs by terrain, elk population, the number of hunters on the ranch per hunt, accommodations, and other variables. These hunts are not very physical but can become physical. Elk hunts are difficult, and you should come prepared for physical effort. We are not asking you to be a triathlete, but if you can't walk any distance without stopping you are hurting yourself and may be wasting your money on killing a bull. Call us and we'll discuss the options with you and pair you with a ranch that is suitable for what kind of hunt, you would like.

- **The cost of the hunt includes:**

**IN NEW MEXICO:** the landowner authorization for you to purchase a hunting license, the appropriate number of guides, camp accommodations, meals and snacks, courtesy transportation during the hunt, retrieval of game and capping for trophy preparation of

the animal.

**IN COLORADO:** the appropriate number of guides, camp accommodations, meals and snacks, courtesy transportation during the hunt, retrieval of game and capping for trophy preparation of the animal.

- **The hunter is responsible for:**

**IN NEW MEXICO:** buying a valid hunting license with the use of a supplied landowner authorization number from any vendor in the state.

**IN COLORADO:** obtaining a valid license by applying for and drawing a license through the application process for Colorado. Failure to draw a license in the application process, the hunter will then contact the landowner and buy a voucher from the landowner to be used for the purchase of a hunting license.

**IN BOTH STATES:** The hunter also will be responsible for bringing any personal items including alcohol, weapon and ammunition, and any specific item he requires. Motel accommodations or any accommodations that are not in our camp will be his responsibility and transportation from their home to camp or prearranged meeting location.

## PRIVATE LAND ELK UNIT 10

This ranch is situated west of Grants, New Mexico, which is west of Albuquerque, along the I-40 interstate corridor.

Elevation is approximately 6,800 feet and consists of rolling hills and mesa type terrain. We have hunted this ranch for the last six years and have maintained a 90%+ success rate for rifle bull elk hunts. The ranch is not overly physical, and the hunt will consist of spending time glassing, locating elk, determining if the hunter desires the animal and then moving into a position for a shot.



At this time, you need to be able to move and cover distance. This hunt is strictly on foot.

The ranch is hunted very lightly per hunt, thus the high success rate. There are some exceptional bulls that occur on this ranch and in the past we have taken bulls up to 370 B&C. The average bull is above 300 and because of the number of hunters that we allow on the ranch a hunter can spend his time and look for a bull that he wants.



### NM PRIVATE LAND ELK HUNTS

#### Hunt Dates

##### Archery

Sept. 1 - 15, 2025, any seven days  
Sept. 15-24, 2025, any seven days

##### Rifle: Any Five Days

##### Units 10:

October 2 to November 15, 2025, any five contiguous days

#### Hunt Prices

##### Unit 10

1x1: \$9,000 + tax

2x1: \$8,000 + tax

**NO DRAW OR APPLICATION**

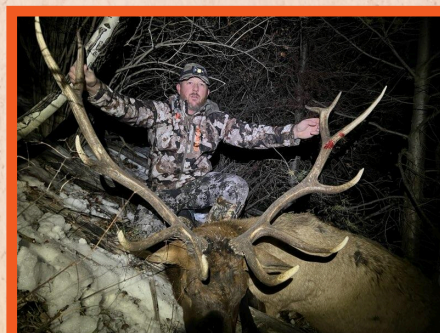
## COLORADO PRIVATE LAND ELK HUNT

This hunt occurs in Southeastern Colorado in Game Management Unit 83. This is a great hunt with the potential of a once-in-a-lifetime harvest and this trophy class ranch gives you the opportunity to take that 300 plus B&C bull. This hunt, though easier than some, is still an elk hunt and that translates into getting out and hunting. You are hunting at 7,500 to 10,000 feet in elevation, and the lodge is located at 9,500 feet, so the better your physical condition, the better your odds for success. This is not about riding around in a vehicle and trying to find an elk... you start the morning out walking and you end the evening walking. Come prepared. Covering multiple miles on any outing is a normal situation. It is a morning and evening hunt and not a hike the hills all day type of hunt.

In a normal weather year, this area will hold a tremendous number of bulls. The area hunted is 11,000 plus acres and runs from sagebrush flats with wetlands and alfalfa fields, to timberline and above. We will hunt this ranch during the last archery season, and all four of the rifle hunts.

All archery and rifle hunts are by draw with the application window for Colorado closing approximately April 2nd, 2025. In 2024 we had a 92% draw rate for the rifle hunts. New this year is the application for Archery tags, which I would assume would be close to the rifle draw success.

If you fail to draw a license, then you may purchase a license voucher from the rancher that will enable you to buy a license across the counter.



### CO PRIVATE LAND ELK HUNTS

#### Hunt Dates

Archery - DRAW or across counter licenses

September 25-30, 2025

##### Rifle

October 15-19, 2025

October 25-29, 2025

November 8-12, 2025

November 19-23, 2025

#### Hunt Prices

2x1: \$8,000 each

1x1: \$9,000 each

**Application Deadline:  
April 2<sup>nd</sup>, 2025**

## YOUTH AND SENIOR CITIZEN HUNTS

This year we had a considerable number of youth hunters apply and harvest animals with us. We were not 100% on harvest but we did achieve that on shot opportunity.

We encourage youth hunting to enlarge the hunting base, so we would like to encourage you to put your kids or grandkids in for the youth hunts. There are several application services available to you that will float the cost of the license and state application fee and give you their free application service for youth hunters. If you draw you will pay for the license, but you are not out money on your credit card for the application and license fees. You combine those features with the free use of the outfitter number from

Kiowa Hunting and you are in a win/win situation. Think seriously about it and let's go hunting.

Finally, if you have a youth hunter and they successfully draw, Kiowa suggests you come on the hunt with them, share the experience, and make it a family event. We do not charge a non-hunting fee for the family to be there. In fact, we strongly encourage it.



New Mexico offers special dates for youth hunters and for all species... Bighorn sheep, Elk, Deer, and Antelope. The youth hunts are prime dates in prime areas and are just great hunts. Your youth hunter can apply for different hunts, but these hunts will make you jealous of what and where it is offered. To be eligible for these New Mexico hunts the youth must be 17 years of age or younger on the opening date of the hunt and must possess a hunter education number or mentor-youth number which is valid for all species but sheep and elk.

Not to leave the Senior Citizens out, New Mexico offers an off-range Oryx hunt for seniors 70 years and older. It's a great hunt and is normally less physically challenging. These hunts are reserved for people aged 70 and above and are in high demand. This hunt is currently the only one offered for people that qualify due to age.



Even though we are busy most of the fall, we occasionally find time to go hunting with other outfitters and in other states. We're often asked who we recommend, and we do not recommend anyone we have not hunted with. We know numerous outfitters but do not go in their camps and do not know details about their operations, so we cannot truthfully recommend them. So, as a service to our customers here are three outfitters that "we hunt with," have been in their camps and know how they operate. We have no reservations about recommending them if you want to hunt in

Colorado, Arizona or Mexico.

The three different areas have three different license procedures: New Mexico has no preference or bonus points and is a strict lottery, you are in the draw. Colorado has a preference point system and unless you have enough points to draw, you are not in the draw. Arizona has a bonus point system where you are given bonus points for the years that you have applied and you may draw, even with no points. Mexico has across the counter licenses and the outfitter will arrange them for you. This is a simplistic view of the draws.



## ← COLORADO →

New Mexico's license lottery is a draw system. Unfortunately, there are always some hunters that do not draw. After the draw we receive numerous inquiries of where hunters can go, such as across the counter hunts, public hunts, or private land voucher hunts. Colorado is a

"preference point" state, so if you have enough preference points there are some truly great hunts that you can draw, and some hunts are good with no points. When I or my family hunt in Colorado we only hunt with one outfitter and that is "Twisted Tine Outfitters of Colorado". Chad Kribbs is the go-to guy for Colorado elk and deer hunts. You can look him up at:

[www.twistedtineoutfitters.com](http://www.twistedtineoutfitters.com)



## ← ARIZONA →

Arizona is a bonus points system, which means that you may draw a hunt with 0 bonus points. The odds are against you, but it does happen every year. Our go-to man in Arizona is Grant Hottman with Grant's Guide Service. Visit [www.grantsguideservice.com](http://www.grantsguideservice.com) or call Grant at 602-399-0337.

Grant started out guiding for us and still does guide for us when he is not guiding his own hunters in Arizona. Grant is knowledgeable about the Arizona Draw system, the units that are good, and where you can go with across-the-counter tags or a limited number of bonus points and how to do it.

Grant guides for elk, mule deer, bighorn sheep and all the big game species in Arizona.

Grant is a very good hunter and takes some tremendous animals. The difficulty in Arizona is drawing the tag, but if you do you will be into great hunts. Grant does have some over the counter hunts and does extremely well on them.



[info@kiowahunting.com](mailto:info@kiowahunting.com)

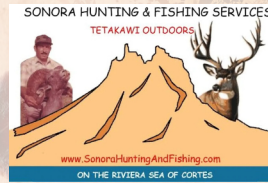
## MEXICO

When we want to hunt for excellent Mule Deer and Coues Deer we normally go south into Mexico. We have been there numerous years and have never felt insecure or in any compromising position. There are places in the United States that I feel worse about being than in Mexico. The deer in Mexico are nothing like what you will experience in most locations in the United States. A 160 B&C to 180 B&C mule deer is just a deer and a Coues deer that is 100 B&C in Mexico is just a deer.

The hunting for Mule deer is mostly done out of a high rack vehicle and the Coues deer is by Spot and Stalk and sitting on Water holes. When you decide to

go to Mexico the outfitter will take care of all your paperwork for you from gun permits, licenses, export permits and pick you up at the airport in Hermosillo, Mexico. You are well taken care of in Mexico and will lack for nothing that you will need. The quality animals are there, the accommodations are very nice and the personnel will see that you do not want for anything.

For more information contact Luis Caballero at **520-841-6187** or by email at **info@sonorahuntingandfishing.com**



## OUTFITTER RAMBLINGS

The interesting part of this business is the people that you meet, visit with, talk with, and the situations that occur or could be prevented if things were handled differently. With this in mind, these are my thoughts on various subjects and hopefully, they will assist you in planning your hunt.

### The Application System for Public Land Hunts

The first step in the application system is to be honest with yourself about what you desire in a hunt. If you only want a huge bull or buck, say so. But if you want to hunt elk and don't care on the size of the bull or buck, say so.

There are no hidden gems and little spots in New Mexico that are easy to draw, have large animals, low hunter pressure and have high success rates. The units that have more and bigger animals are in high demand and your odds of drawing are low with some areas giving less than 1% draw odds. Some units have a high draw rate, but that's because there are a limited number of elk, low harvest success rates, and usually have high hunter numbers. Hunters take some animals in these areas, but your hunt can be deemed successful if you simply see a legal animal.

So,

- You have three choices, and all are valid. When they pull your application they will look at all three choices at the same time and the first one, in the order that you put them, that has licenses is where you go. You'll want to try for a high demand, big bull unit as your first choice, then go with higher percentage draws.

- Utilize your three options on the draw.

Outfitters are businessmen and most are very honest and truthful in what they do though some are not. As stated, before, be honest. Just as you expect the outfitter to be honest, the outfitter expects you to do the same and explain what you are looking for. Elk hunts are difficult so do not fool yourself that they are easy. The better prepared you are, the better your chances will be. Some bulls die by road hunters and simple plans, but elk are tough and smart. Lower success rates than other species is common as they are elusive and you are not going to see herds where you can pick and choose your elk. If elk hunting WAS easy no one would do it, hence the demand for them.

### The best way to ensure you will not kill an animal

This is pretty simple: just insult your guide, degrade your

guide, explain that you have hunted several times and know more than the guide, tell them that in some other state this is how we hunt, and overall make your guide not want to hunt with you. These guys know what to do and should be regarded with respect. They are very good at what they do and are going to try to get you an animal, whether a two-day guided or fully guided.

### DO you harvest animals in the first two days of guide only hunts

Yes, we do this very often during the seasons. The guides are there to hunt and to take animals during their time with you. The guides try hard and we try to send the best guides with you to get an animal.

### If I am unsuccessful the first two days of the hunt can I hire the guide for additional days?

Possibly, but there are several items that must occur. First is that a new contract must be prepared for the Game and Fish Department. Secondly, a new itinerary must be prepared for the Forest Service or the Bureau of Land Management and lastly someone needs to be around to prepare these documents. We also do not do it by the day. If you want a guide for extra days then you need to decide on how many days and we do it once.

### What are the accommodations like on the hunts?

In our Elk Camp units, 10-12 and 51-52 we utilize tent camps with a house or cabin for the cooking. In most of the other units that we hunt, for other species and in some deer and elk hunts, we will attempt to utilize motels in towns centrally located to the hunt areas. The hunter will be responsible for his own motel accommodations on these hunts, and we will furnish meals. We also offer guide only hunts for most species, where the hunter is responsible for his own meals and accommodations. Every hunt is a little different so there is no set normal operation for all hunts

### What is the best way to never hunt with Kiowa Hunting more than once?



## MORE RAMBLINGS

The best way to do a “one and done” with Kiowa is do not tip your guide. If you do not want to ever come back just do not tip the guide. The guides are contract employees and work at their own discretion, they are not employees that can be forced to work in certain manners. Guides also talk to other guides, and they talk about tips and hunters. If you do not tip the guide, they will tell all the other guides, so, when you want to rebook, I will not be able to find anybody that will guide you.

### Why do you not guide and hunt in wilderness areas on two-day hunts?

This is simple, we can do it if you want to pay. To do two-day wilderness hunts the guide must pack in to the wilderness the day before the two days hunting and pack out of the wilderness the day after the two days of hunting, for a total of four days. Real simple you pay for two days of the guides time at booking and if you want four days, to do a wilderness hunt, then you will be charged for four days.

### Up and coming Elk Units

One of the up-and-coming units that have come to our

attention is unit 2 for elk. The staff is seeing lots of elk and good bulls. We hunted archery there this year and the guide had numerous opportunities on elk, shot at four different elk in seven days and wounded one that was not recovered. A serious unit to consider for this year.

### Closing a loophole

It has come to our attention about a couple of recurring items that we witnessed last year. Because numerous outfitters are starting to charge for the use of their outfitter number to apply and we are not charging, we feel that we had several clients use our number to draw a tag and then immediately requested a transfer to another outfitter. We believe that they did this with no intention of hunting with us but to avoid paying the desired outfitter for the use of his number. We are instituting a policy now, that if you use our number to apply and draw a license if you want to transfer from us to another outfitter, we are charging for the transfer.

## ANTELOPE - PUBLIC LAND



## ANTELOPE

We are again offering public land rifle antelope hunts and there are many good antelope units in New Mexico. These hunts will be for the most part “guided only” and for the entire three days of the rifle seasons or for the first three days of your archery hunt. Of course we will use the outfitter number to aid you in drawing the license. When you draw the

license it will be valid for any public land within the whole unit and with legal access to it. Due to the permit allocation system in New Mexico, there will need to be a minimum of 7 total licenses available for that hunt to be in the draw, for one person, with the outfitter number to draw.

The more applicants on the application, the more available licenses for that unit need to be available. There are normally three season dates per unit and the easiest to draw is the last one but the odds, of harvesting a good animal is lower. You can mix and match units and season dates when you apply.



### ANTELOPE HUNTS PUBLIC LAND

#### Hunt Dates Archery

**August 9-17, 2025**

Guiding will occur for the first three days that you hunt

#### Rifle

August 23-25, 2025

September 27-29, 2025

October 4-6, 2025

#### Hunt Prices

**1x1:** \$2,400 + tax

**2x1 or 3x1:** \$2,200 + tax

**4x1:** \$2,000 + tax

**Camp and Food provided for hunt:** \$1,000 + tax

**Application Deadline:**  
**March 19, 2025**



## GAME MANAGEMENT UNIT 38 & VAUGHN, NEW MEXICO

We are currently working on our hunt schedule, this year, and at this time we are not sure exactly what the hunt dates will be. The ranch has decided to enroll the ranch in the Antelope incentive program that is offered by the NM Game and Fish Department.

This program allows a latitude of dates that we can hunt, and we are waiting on the ranch and the Department to finalize their program.

We currently have not decided on the number of hunters that will be allowed on the ranch.

Surveys will be conducted after the brochure is prepared and at that time we will decide on the number of hunters for the year. This past year we took 12 hunters, harvested 12 antelope, and took one that scored 84 B&C and another one that scored 87 B&C.



### VAUGHN, NEW MEXICO ANTELOPE HUNTS

#### Hunt Dates

Dates have not been set at the time of the brochure. The ranch is entering into an antelope program with the Game and Fish Department and the program allows for flexibility into hunting dates.

THERE MAY BE MORE ADDITIONS TO THIS AS WE ARE LOOKING AT OTHER AREAS TO OFFER ANTELOPE HUNTS

#### Hunt Prices

1x1: \$4,400 + tax  
2x1: \$3,850 + tax

**NO DRAW OR APPLICATION**



## 🏹 MULE DEER HUNT - UNIT 10 🏹



The private land ranch lays in GMU 10 in the central part of New Mexico and consists of 7,000 plus acres. The management plan for the ranch is to take only two hunters on the ranch for the year.

This ranch produces quality mule deer and deer and occasionally in excess of 180 B&C have been killed on it. This hunt will be during the regular seasons as set by the Department of Game & Fish and will consist of glassing to locate quality deer that you would want then hunting by spot and stalk. The licenses for these hunts are across the counter and there is no draw for the tags.

This deer hunt can be added to an elk hunt as a combination hunt, but the hunts must occur simultaneously and during the deer seasons set by the Department of Game and Fish. The cost of the combo hunt will be \$11,000 plus tax.



### MULE DEER HUNTS UNIT 10

#### **Hunt Dates**

October 19-23, 2025  
October 26-30, 2025  
November 2-6, 2025

#### **Hunt Prices - Deer**

1x1: \$7,000 plus tax  
2x1: \$6,000 plus tax

#### **Hunt Prices - Deer & Elk Combination**

1x1: \$11,000 plus tax

**NO DRAW OR APPLICATION**



## NEW MEXICO PUBLIC LAND MULE DEER HUNTS

New Mexico has many excellent mule deer hunts on public land, but they are all by draw and the application must be submitted by March 19, 2025. We are licensed by all the New Mexico National Forests, Bureau of Land Management Districts, and the New Mexico State Land office, so we can offer you a hunt in any unit that you desire. We are one of the few outfitters in the state that can do this for you. Most outfitters may be licensed in one or two areas in the state, and they confine your choices for applying in these areas. We will assist you with the application process, offer hunt suggestions for you based on what you are wanting in a hunt and allow you to use the outfitter number for free to improve your odds of drawing. We offer you two types of hunts on public land: 1. Guide only hunts for whatever number of days you would like a guide, minimum of two days only hunts with no accommodations or meals. 2. Fully guided, accommodated and meals for the hunt, pricing depends on the number of days of the guiding you desire, five, seven or nine. On the fully guided and accommodated hunts, we will attempt to operate out of a nearby town so that you can get a motel, the cost of the motel will be your responsibility. If you want to camp, we will create a camp in an area and you can bring your personal gear.

We will hunt all three weapon types during the public land deer hunts, archery, muzzleloader and rifle, and for both Mule Deer and Coues Deer.

The type of hunt that you are looking for and which species you desire will dictate as to what we would suggest you apply for. We will not be hunting during the September Archery deer hunts unless you also have an archery elk hunt for the same season. The reasoning is that we may not have the staff available for the deer hunts due to commitments on the elk hunts. There are several great deer units to apply or where they take some exceptional deer. There are other units that are just fun deer hunts. Remember that you have three choices on your application, and you can mix and match units, weapon types, and time frames. Call us and we can work on a game plan for you.



### NM PUBLIC LAND MULE DEER HUNTS

#### Hunt Dates

Depending on unit drawn

#### Hunt Prices

##### Guided only: 2-day

1x1: \$1,800 + tax

2x1: \$1,500 + tax

3x1: \$1,500 + tax

4x1: \$1,200 + tax

##### Guided only: 5-day

1x1: \$4,500 + tax

2x1: \$4,000 + tax

3x1: \$4,000 + tax

4x1: \$3,500 + tax

##### Guided with

##### Accommodations: 5-day

1x1: \$6,500 + tax

2x1: \$5,500 + tax

**Application Deadline:**  
**March 19, 2025**

## NEW MEXICO UNITS 23, 24 OR 27

This will be a public land hunt in either GMU 23, 24 or 27 for the Gray Ghost or the Coues Deer. These are prime Coues Deer hunting areas in New Mexico. We are licensed by the appropriate National Forests and Bureau of Land Management Districts and are one of the few that are licensed in Unit 27. If you apply for the Coues deer hunts MAKE SURE that you apply for the hunts listed as FAWTD. DO NOT APPLY FOR FAMD. FAWTD stands for Fork Antlered Whitetail Deer, this is the Coues hunt. FAMD stands for Fork Antlered Mule Deer.



We offer two types of archery hunts for Coues: a 2-day guided only hunt or a 5, 7 or 9-day guided only hunt. Contact us for a price for the seven- or nine-day hunts. The hunter will be responsible for all meals and motel or camp. If we are near a town, only in unit 24, we will hunt out of town from motels. The cost of the motel is your responsibility, but we will furnish all meals for your hunt. Remember, these hunts are in January and very likely will have bad and cold weather, that is why we offer guide-only hunts or may operate out of a motel. If we hunt in an area that is a considerable distance from the nearest town with accommodations, you can either provide your own camp and food or we can do it for you but will charge you for the service.

The hunting methods for Coues is basically glass, glass, glass, move, glass, glass and glass some more. Once the query is located than the plan will be devised to be able to get you a shot. These hunts can be physical because of the terrain that the animals inhabit. The better you are at long distance shots the greater your harvest opportunity will be.

## COUES DEER UNITS 23, 24 & 27

### Hunt Dates

#### Hunt bag limit:

FAWTD for Coues deer

#### Archery

Jan. 16-31, 2025

#### Rifle Hunts

November 1-5, 2025

November 22-26, 2025

December 6-14, 2025

January 16-31, 2026 (five days)

#### Muzzleloader

November 1-5, 2025

### Hunt Prices

#### Guide Only: 2-day

1x1: \$1,800 plus tax

2x1: \$1,500 plus tax

3x1: \$1,500 plus tax

4x1: \$1,200 plus tax

#### Guide Only: 5-day

1x1: \$4,500 plus tax

2x1: \$4,000 plus tax

3x1: \$4,000 plus tax

4x1: \$3,500 plus tax

#### Guide with

#### Accommodations: 5-day

1x1: \$6,000 plus tax

2x1: \$5,000 plus tax

**Application Deadline:**  
**March 19, 2025**



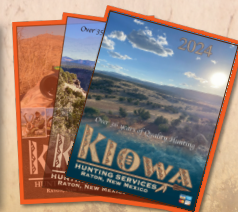
21 years of Kiowa brochures designed by:

**DAVE SHAVER**

Specializing in small business graphic design

**"Your vision... brought to life"**

Call: 719-680-4546 Email: dave@thatfish.com



[info@kiowahunting.com](mailto:info@kiowahunting.com)

## ORYX PUBLIC LAND ON-RANGE HUNTS

Kiowa Hunting Service offers hunts for free ranging Oryx (Gemsbok) on both the White Sands Missile Range (WSMR) and the McGregor Range. We are one of the few licensed outfitters operating on both ranges and have been on WSMR since outfitters were first legally allowed. The WSMR and the McGregor Range hunts are public land hunts and the licenses are allocated by draw. There are numerous hunts to apply for on the WSMR hunts beginning in September of 2025 and running through February of 2026.

WSMR hunts are 3-day hunts and McGregor Range hunts are 2-day hunts. WSMR hunts are once in a lifetime hunts while McGregor Range hunts are not, so if you have already hunted on WSMR then you can try again, on the McGregor



### Range

The other options for someone that has held a WSMR permit is to apply for the broken horn hunt on WSMR or put in for an off range hunt as your last choice.

### All Inclusive Package:

- Transportation to the hunt area from motel and transportation during the hunt utilizing our vehicles.
  - Motel accommodations, 1x1 hunt single occupancy, 2x1 hunt double occupancy.
  - All meals and snacks from the night before the hunt to the end of the hunt.
  - Guide for either a 1x1 or 2x1 hunt.
- No-Frills Package:
- Transportation to the hunt area from motel and transportation during the hunt utilizing our vehicles.
  - Lunch day meal and all snacks and drinks during the hunt.
  - Guide for either a 1x1 or 2x1 hunt.
  - Hunter is responsible for their own accommodations, meals, and cost of trophy preparation if desired.



## W. S. M. R. & MCGREGOR RANGE HUNTS

### White Sands Hunt Dates

Any weapon  
Sept. 2025 - March 2026

### Hunt Prices Inclusive Package

2x1: \$3,500 + tax  
1x1: \$4,000 + tax

### No Frills Package (Guide Only)

2x1: \$2,500 + tax  
1x1: \$3,000 + tax

### McGregor Range Hunt Dates

Any weapon  
December 20-21, 2025  
January 10-11, 2026

### Hunt Prices Inclusive Package

2x1: \$2,250 + tax  
1x1: \$2,700 + tax

### No Frills Package (Guide Only)

2x1: \$1,500 + tax  
1x1: \$1,800 + tax

**Application Deadline:  
March 19th, 2025**

## ORYX PUBLIC LAND - OFF RANGE HUNTS

We will be conducting off range hunts during the year. These hunts are open anywhere on public land for an entire month. We will guide you for five days and will be doing only the No-Frills package for these hunts. For details about this package see above on the On-range hunts.

At the time of the hunt, we will decide on what hunt area we would like to concentrate. On most hunts you will have additional personnel scouting and trying to locate an Oryx for you. The population off range does not compare with on range hunts, but the odds of drawing are good.

The success rate for the off range hunts were 60% last year so, the Department has increased the number of licenses issued by 18% for this year. If you want to take an Oryx, then I would apply for one of these hunts as a second or a third choice. The difference between the "on-range" hunts and "off-range" are fairly simple: for on-range hunts you can be picky and still have a good opportunity to take a nice Oryx (86% success rate), for off-range hunts you cannot be picky and if the Oryx is anything close to what you want you better get after it. The average number of days hunted off range was 5.5 days per hunter. This hunt and the McGregor Range hunt opens up your options.



### OFF RANGE ORYX HUNTS

#### Hunt Dates

June 2025 to March 2026, any five days in the month

#### Hunt Prices

##### No Frills Package:

1x1: \$4,000 + tax  
2x1: \$3,000 + tax

**Application Deadline  
March 19th, 2025**



## SHEEP APPLICATION INFORMATION

You can apply for both Rocky Mountain Sheep and Desert Sheep on the same application.

For each hunt code (Rocky Mountain and Desert) you get to select three hunt areas, which will have different hunt dates that will correspond to them specifically. When your application is pulled by the Game and Fish Department, the Department will look at each hunt code and area that you listed and in the order that you listed them, and they will review all your choices at the same time. The first hunt code and area that has an opening is the license that you draw. Bottom line is that to improve your odds you should utilize all six opportunities to list a hunt code.

When you think about sheep hunting in New Mexico.



## DESERT BIGHORN SHEEP - NEW MEXICO

New Mexico's desert bighorn sheep are doing well. Sheep are occurring in five different units and the Department offers you 13 different hunts to select from. We can conduct hunts on any Bighorn Sheep area that you would like to apply for.

We have staff that are familiar with the hunt areas and can provide you with an excellent and successful hunt. These hunts begin in September and run through December of the current year.

The dates depend on the unit drawn.

- **Cost of the hunt will include:** Our outfitter number and assistance in applying for the license in the draw, camp and full meals if camping out or daytime meals and snacks if operating out of a motel, courtesy transportation during the hunt, guide and spotter service, trophy preparation of your animal and retrieval of the animal.
- **The hunter is responsible for:** Transportation to the nearest agreed upon town, motel accommodations and morning and evening meals if staying in a town, personal gear, weapon, etc. and the cost of the license.



## ROCKY MOUNTAIN BIGHORN SHEEP

### Hunt Prices

#### New Mexico 7-Day Hunt

\$7,900 + tax  
Season dates depend on Unit and range from August through December.

**Application Deadline:  
March 19th, 2025**

## ROCKY MOUNTAIN BIGHORN SHEEP - NEW MEXICO

We offer hunts for these animals in all available units except in unit 45 (Pecos). We do not hunt in unit 45 because to do it properly it needs to be horseback, and it is a logistics problem for us to do it correctly. The main population of sheep are in the wilderness area, and it is a long horseback ride to get to them.

Rocky Mountain Sheep hunts occur in 12 different units and the Department offers you 15 different hunts to choose from. When you draw your license and come on the hunt, the day before your hunt starts you will be greeted by a team of people who will help you with your hunt. Depending on the unit drawn it may be a horseback hunt, a backpack style hunt, or a truck hunt. Please feel free to contact us about the details of the different hunts and we will attempt to pair you up with a hunt that will work for you. These hunts begin in August and run through November, depending on the unit drawn.





New Mexico's Florida Mountain is the only place in the Western Hemisphere where pure blood, unfenced, free ranging Persian (aka Bezoar) Ibex are hunted. Our staff includes

many of the former Kauffman Outfitters personnel. With more than 2,000 man-days of ibex hunting experience, our strategies consider hunter density, hunt type (muzzleloader, rifle, or bow), wind conditions, seasonal vegetation changes, precipitation, cougar sign, and our hunter's experience level. We can accommodate hunters from youth through old age and those with some physical limits. Note that the youth hunt occurs during the school Christmas break.

Safari Club International (SCI) keeps worldwide trophy statistics for Ibex and their record book shows that the highest scoring Bow or Muzzle Loader kills and the second highest scoring Rifle kill were taken in New Mexico. Within New Mexico we have guided 5 of the top 6 bow kills, 87% of the guided bow kills, 54% of all bow kills (guided or not) and 35% of all the Ibex entries (any weapon) in the book. Only 9% of the entries are attributed to other outfitters that are still in business. That's why people hunt with Kiowa!

With Kiowa you could kill several Ibex with a bow before drawing a rifle tag. Despite rumors to the contrary, short bow shots are possible for Billy Ibex.



IBEX

**Drawing details:**

Applying with the Kiowa Outfitter number, which is available on the Kiowa website, improves your draw odds substantially.

Currently the Ibex population is at a low compared to past years. To address this situation the Department has decreased the number of licenses available, have changed the Muzzleloader hunt from a fifteen-day hunt to a seven-day hunt, and have banned scopes on muzzleloaders.

Drawing a bow Ibex license is much easier than a firearm license. For most bow hunters the January hunt is a better fit into their schedule than one in October, but when compared to the non-resident January bow hunt, the outfitted January bow hunt odds are more than twice as high and the outfitted October bow hunt odds are more than six times as high.

**Cost of hunt includes:** Use of our outfitter number on your application, snacks & drinks to carry, all portable meals on the mountain, evening meals, courtesy transportation during the hunt from the motel, the most experienced Ibex guides and spotters in New Mexico, assistance with retrieval of your animal, and capping for trophy preparation.

**The hunter is responsible for:** Applying for the license with our help, lodging, the cost of the license, weapon, a daypack, hunting gear and transportation to and from the hunt near Deming, NM.



IBEX

**Hunt Dates**  
Choose a minimum of 5 days or more

**Rifle:** November 15-29, 2025

**Youth Hunt:**  
December 27, 2025 to  
January 10, 2026

**Archery:** October 1-15, 2025  
January 15-29, 2026

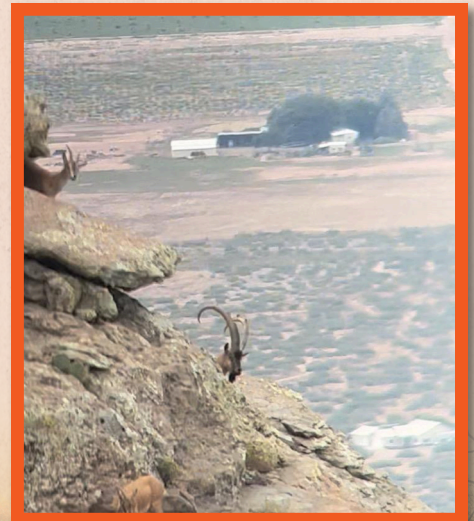
**Muzzleloader:**  
February 21-27, 2026

**Hunt Prices**

\$7,500 + tax for any 5 days  
\$9,300 + tax for any 7 days

Additional days at a rate of \$900 per day may be booked beyond the contracted number of days

**Application Deadline:**  
March 19<sup>th</sup>, 2025



## PUBLIC LAND BARBARY SHEEP (Aoudad)



This hunt is for free ranging Barbary Sheep (Aoudad) in New Mexico. It is an excellent hunt for high quality animals. This is a “park the vehicle and hike” style hunt and the vehicle is seldom seen again until dark. This is a physically challenging hunt with numerous miles of walking done each day.

New Mexico Game and Fish has made some changes for next year and this will make it easier for you to draw a tag. The number of tags went up by 20% in 2023, due to an increase in populations, and the number of hunts will increase while the number of days hunting will be reduced from 14 days down to 5 days. A hunt unit is composed of multiple big game units combined into one hunt unit and we can hunt in all the listed big game units. These units are comprised of 1: Unit 28 McGregor Range, 2: Units 29 and 30, 3: Units 32, 36, and 37. Each of these hunt units will have multiple hunt dates and you can mix or match hunt units on your

application and all will be valid to be drawn.



All three of the different hunt units are good. Probably the best area to draw a sheep tag, with the least pressure, is on McGregor Range, as limited Ram hunts occur there. The department is putting pressure on the ewe herd to reduce the number of sheep in the area. We define the hunts as in units 32, 36, 37 be prepared for long hikes over rolling mountainous terrain and long pack outs. In Units 29-30, be prepared for a lot of glassing, long hikes and then up to reach the sheep. In unit 28 lots of glassing, access is good from multiple roads but once the sheep are sighted it may be a long hike to reach them.



• **Cost of the hunt includes:** Courtesy transportation during the hunt, drinks, snacks, and lunches during the hunt. Accommodations and meals can be provided if a camp out occurs, which is usually in units 29-30. You may bring your own camp and meals, or we will charge you for



providing the camp and meals for you.

• **The hunter is responsible for:** Travel to the city that we choose to operate out of for the hunt or previously arranged meeting location, motel accommodations if out of a city or camp accommodations if no city is close, meals, unless previously arranged, weapon, personal gear, and licenses. Hunters should bring comfortable packs to carry water, storm clothing, and other personal items. The pack should also be capable of assisting in packing out the sheep. All the harvests will come out on the backs of guides and hunters.

Public land licenses are by draw. The odds of drawing this tag utilizing an outfitter number offer the best opportunity of all three drawing pools to be successful in the draw.



### PUBLIC LAND BARBARY SHEEP

#### Hunt Dates

There are numerous hunt dates. Our hunts are five days in length.

#### Hunt Prices

1x1: \$4,500 + tax

2x1: \$4,000 + tax

#### Camp and food provided:

Additional fee of \$1,500 per person.

**Application Deadline:**  
March 19, 2025

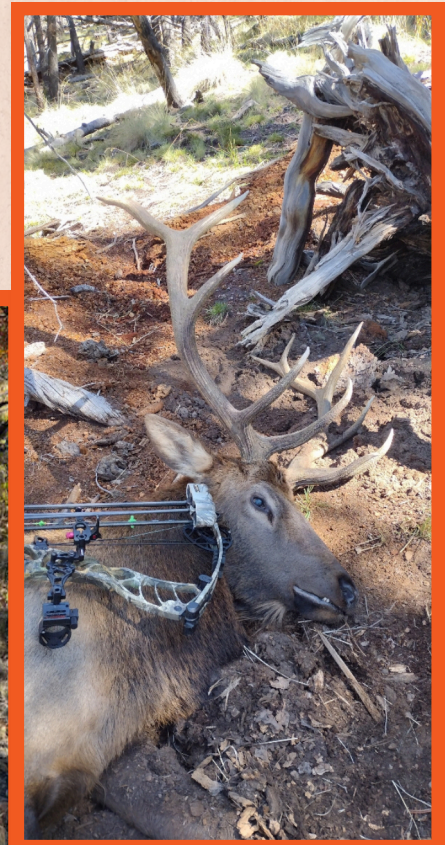
[info@kiowahunting.com](mailto:info@kiowahunting.com)

# WHERE WE HUNT

Kiowa Hunting Service takes you to unique and exciting locations throughout New Mexico and Colorado. Enjoy the stunning scenery and varied terrain as you hunt.



1. Elk - Private, Colorado
2. Elk - Unit 52 Public
3. Elk - Unit 51 Public
4. Rocky Mountain Bighorn Sheep
5. Elk - Unit 7 Private
6. Elk - Unit 10 Private
7. Elk - Gila National Forest, All Units
8. Coues & Mule Deer, Desert Bighorn Sheep
9. Ibex-Public
10. Desert Bighorn Sheep
11. Oryx - McGregor Range
12. Oryx - Rhodes Canyon
13. Oryx - Stallion Range
14. Elk - Unit 34 Public
15. Elk - Unit 36 Public
16. Elk - Unit 37 Public
17. Aoudad/Barbary Sheep
18. Mule Deer - Unit 31 and 33 Public
19. Antelope - Private



575-445-9330 [kiowahunting.com](http://kiowahunting.com)



P.O. Box 428

Raton, New Mexico 87740

Phone: 575-445-9330 Fax: 575-445-0116

Cell: 575-779-5220

## REFERENCES

All references are past hunters, both successful and unsuccessful. For additional references please visit our website at [www.kiowahunting.com](http://www.kiowahunting.com) or contact us.

**Randi & Michael Winther**  
Las Vegas, NV  
952-200-5358  
Oryx & Barbary Sheep  
McGregor

**Steven Bontrager**  
Millerburg, IN  
260-350-1401  
Public land elk archery

**Michael Galluzzi**  
The Colony, TX  
614-208-3883  
Public land youth elk

**Steve Ufheil**  
Germantown Hills, IL  
409-253-0457  
Public Land Elk -  
Muzzleloader

**Clay and Stephanie Bonilla**  
Corpus Christi, TX  
361-739-1098  
Oryx

**Travis Dalrymple**  
Annada, MO 63330  
314-402-7134  
Public land elk rifle

**Scott Wood**  
Farmington, UT  
801-390-9478  
Public land elk  
archery

**Randy Hunn**  
Valley Springs, AR  
316-213-0583  
Elk public land  
archery

**Jacob Shaffer**  
Bartonville, TX  
214-212-5790  
Public land elk  
archery

**Kevin Reidy**  
Katy, TX  
713-725-5907  
Public land elk  
rifle

**Scott Miller**  
Menlo Park, CA  
415-902-4288  
Private land  
antelope

**Michael Conger**  
Nibley, UT  
435-760-5266  
Public land youth  
antelope

**Dalton Gay**  
Florence, AZ  
520-705-3359  
Public land deer

**Mark Murphy**  
Kimberly, ID  
208-731-5615  
Deer and Oryx

**James Lewis**  
League City, TX  
713-302-4996  
Public land deer, elk

**JoAnn Bone**  
Midland, TX  
432-296-1660  
Public land elk rifle

**James Laster**  
Triangle, VA  
571-477-3754  
Antelope, Pvt. Elk

**Andy Suzuki**  
Haymarket, VA  
703-434-2678  
Private land  
antelope

**Dean Eastman**  
Helotes, TX  
210-727-7122  
Public land deer  
and  
Archery antelope

**Evan Luke**  
Peoria, AZ  
623-866-2262  
Public land youth  
antelope

**Jason Lange**  
Elkhorn, NE  
40-960-0376  
Public land elk &  
deer

**Aaron Eberle**  
Conroe, TX  
540-239-7859  
Public land elk rifle

**Hayden Sholtis**  
Macon, IL  
812-459-6338  
Public land Ibex  
archery

**Tom Huff**  
Pepperell, MA  
508-723-4439  
Pub. Elk Bow - 2 day

**Christopher Leon**  
Cypress, TX  
281-910-8341  
On Range Oryx

**Dean Craig**  
Smethport, PA  
814-598-4621  
Public land elk  
archery

**Thomas Hagan**  
Las Vegas, NV  
907-250-4196  
Public land Elk rifle  
Public land Coues  
Deer

**Miguel Mata**  
Queen Creek, AZ  
602-317-8760  
Antelope

**Michael Conger**  
Nibley, UT  
435-760-5266  
Public land youth  
antelope and public  
land deer

**Tom Erny**  
Troup, TX  
930-780-5147  
Public land elk

**Steve Adams**  
Phoenix, AZ  
480-797-0943  
Private Colorado elk

**Aaron McHargue**  
Canyon, TX  
308-940-2022  
Off Range Oryx

**Jeff Tucker**  
Scotts Valley, CA  
831-359-2829  
Public land elk archery

We would like to welcome you to quality hunts with Kiowa Hunting Service. We have been in the hunting business for over 36 years and continue to expand to meet your hunting expectations. Kiowa Hunting Service is a full services organization. Whether you are looking for big game or exotics, we can help you collect that special mount for your wall.

“This institution is an equal opportunity provider.”  
Kiowa Hunting Service operates under various permits in/on:

- Carson National Forest
- Cibola National Forest
- Coronado National Forest
- Gila National Forest
- Lincoln National Forest
- Santa Fe National Forest
- Las Cruces District - BLM
- Socorro District - BLM
- Farmington District - BLM
- Pecos District - BLM
- Taos District - BLM
- New Mexico State Land Office
- White Sands Missile Range

We Proudly Accept

