



### Headline Statistics

<p>WCWSS DAM STORAGE (%)</p> <p><b>94.6</b></p>	<p>WEEKLY DAM LEVEL CHANGE (%)</p> <p><b>-1.60</b></p>	<p>AVERAGE TOTAL DAILY WATER USE (MLD)</p> <p><b>850</b></p>
---	--	--

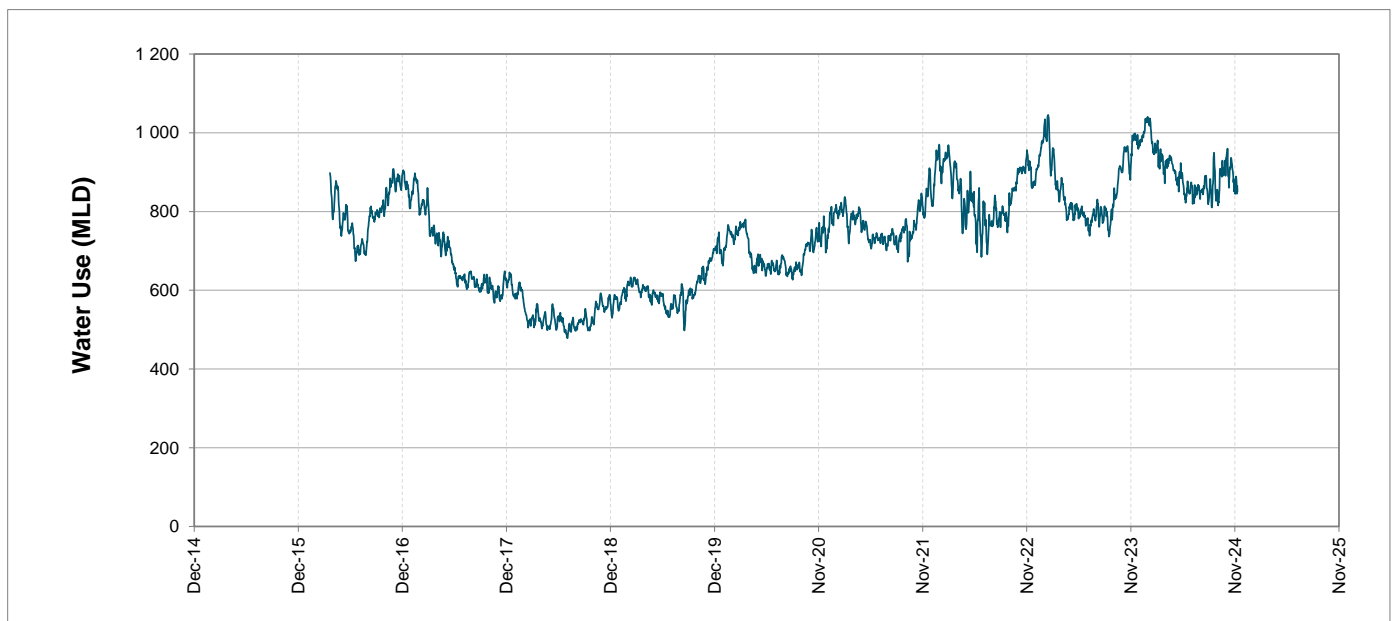
### Water Resource Status

WATER RESOURCE STATUS	MEANING OF CURRENT STATUS
Wise Water Use	<p>Although early winter rains have been above average, the City will continue to monitor these levels. It is important to continue using water wisely.</p> <p><b>Note:</b> The Water Resource status is updated every three (3) months. It will next be updated in November.</p>

### Water Production from Different Sources

<p>MAJOR DAMS (MLD)</p> <p><b>842</b></p>	<p>MINOR DAMS (MLD)</p> <p><b>8</b></p>	<p>GROUND WATER AND SPRINGS (MLD)</p> <p><b>0</b></p>
---	---	---

### Overall Water Usage Trend (2010 - Present)



WCWSS means Western Cape Water Supply System

MLD means million litres per day

More information on Water Saving and Restrictions is available on the City of Cape Town's 'ThinkWater' website

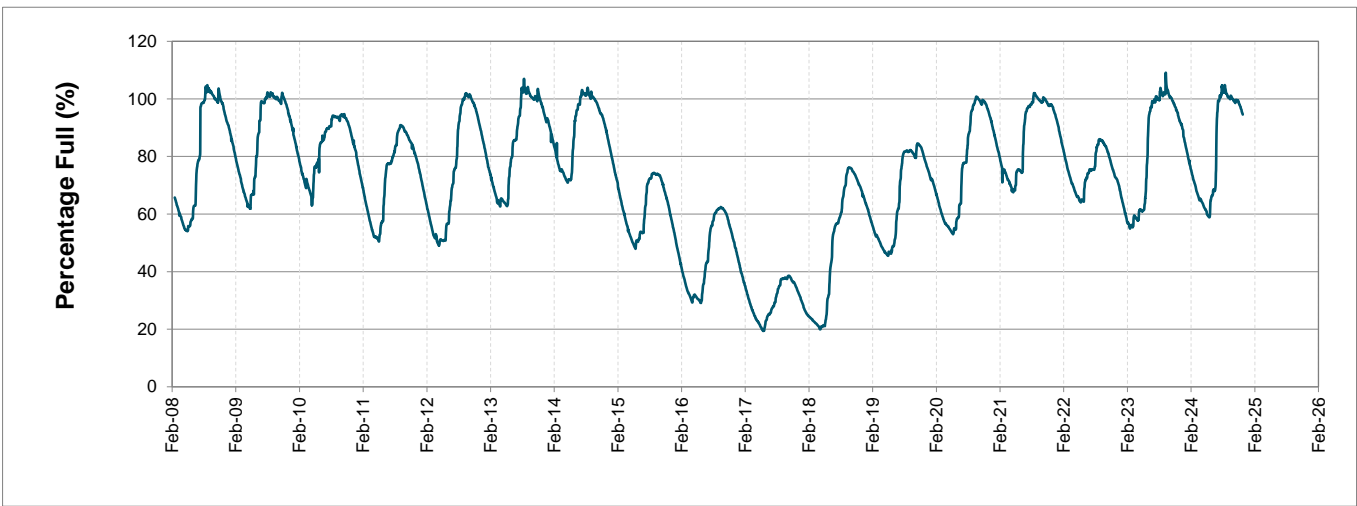
# Water Stored in Major Dams (WCWSS)

Overall Percentage Full **94.6%**

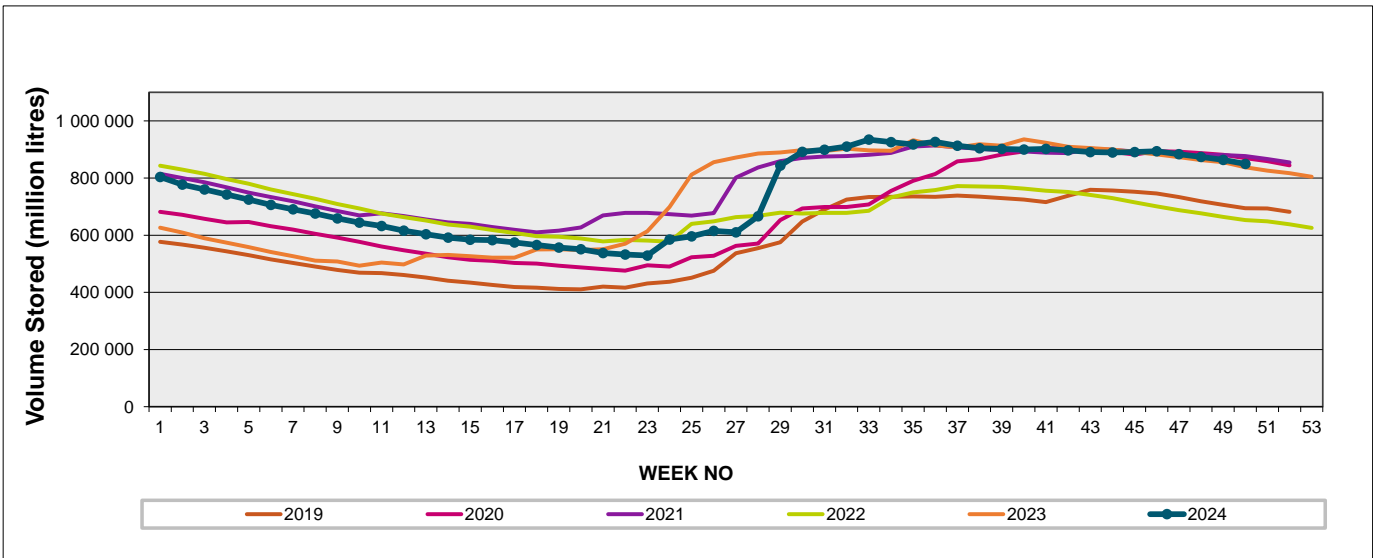
Weekly Change **-1.6%**

MAJOR DAMS (WCWSS)	STORAGE						
	CAPACITY	%	%	%	%	%	%
	MI	09 December 2024	Previous week	2023	2022	2021	2020
BERG RIVER	130 010	95.3	96.9	97.1	89.2	100.2	98.1
STEENBRAS LOWER	33 517	88.7	90.5	88.9	75.6	90.8	92.9
STEENBRAS UPPER	31 767	97.5	97.1	94.8	89.0	102.5	84.0
THEEWATERSKLOOF	480 188	94.1	95.7	92.0	70.8	99.6	98.1
VOËLVLEI	164 095	97.2	98.9	93.0	58.3	95.4	93.0
WEMMERSHOEK	58 644	91.4	93.4	100.0	85.1	91.1	97.3
<b>TOTAL STORED</b>	<b>898 221</b>	<b>849 375</b>	<b>863 748</b>	<b>839 350</b>	<b>654 956</b>	<b>881 326</b>	<b>866 130</b>
<b>% STORAGE</b>		<b>94.6%</b>	<b>96.2%</b>	<b>93.4%</b>	<b>72.9%</b>	<b>98.1%</b>	<b>96.4%</b>

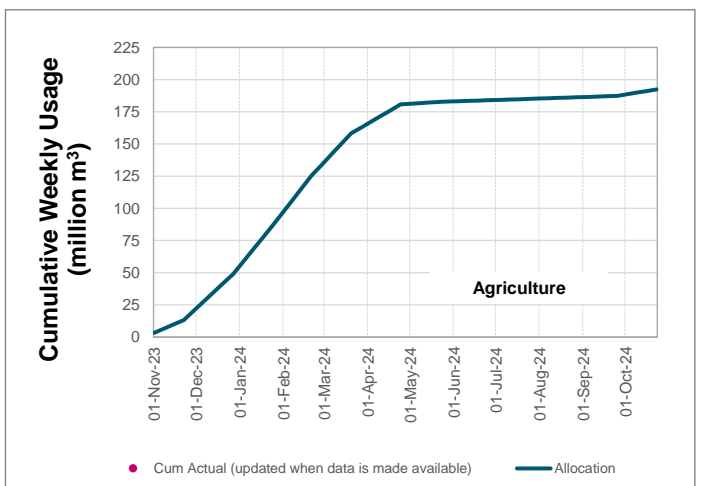
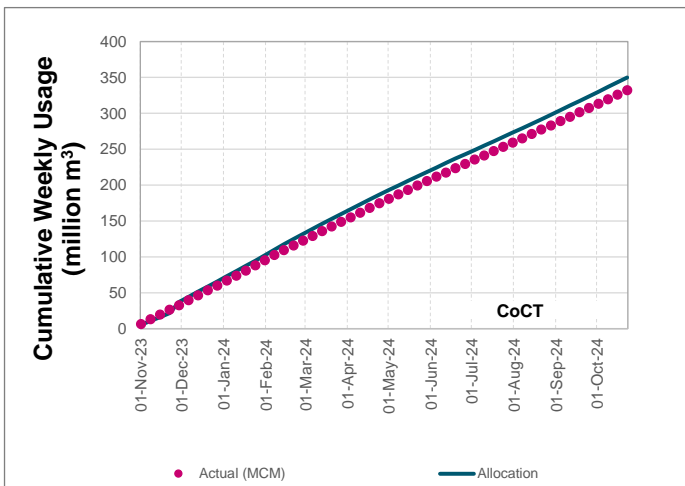
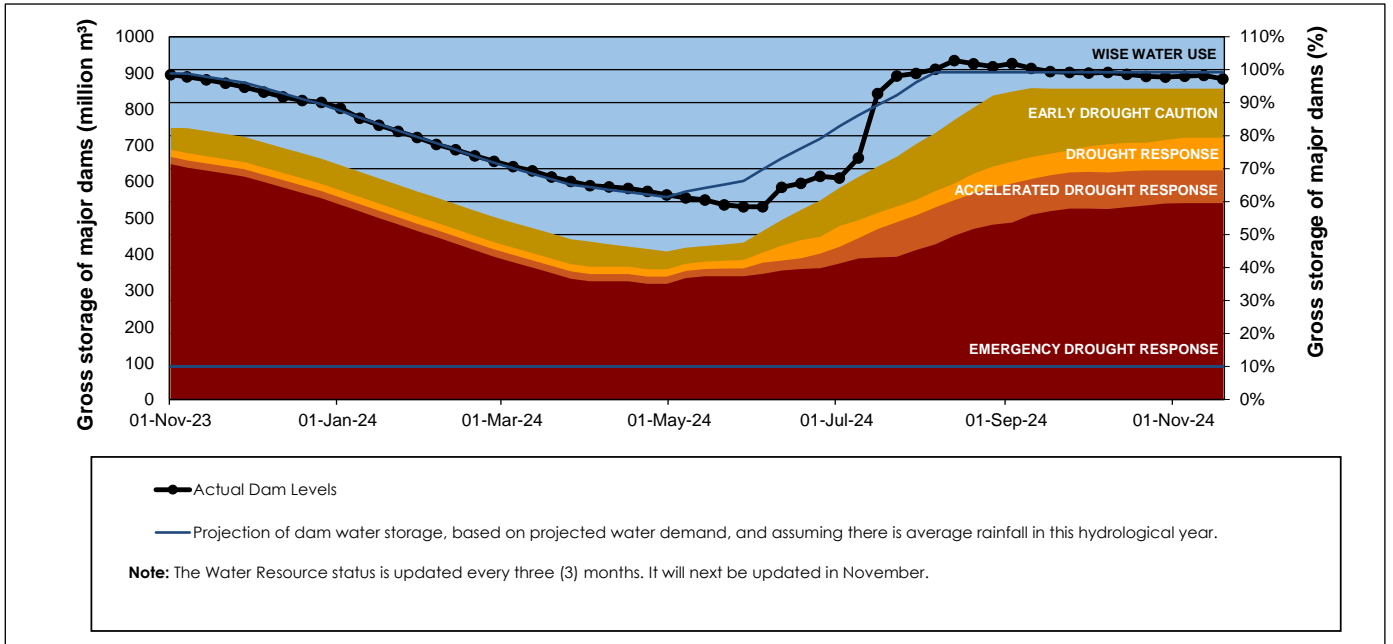
## WCWSS Storage Record (2008 - Present)



## WCWSS Comparative Storage Graph



# Projected WCWSS Dam Storage Levels



## Water Stored in Minor Dams

Overall Percentage Full **66.7**

Weekly Change **2.99**

MINOR DAMS	STORAGE						
	CAPACITY	%	%	%	%	%	%
	MI	09 December 2024	Previous week	2023	2022	2021	2020
ALEXANDRA (Table Mountain)	126	57.5	58.6	61.4	60.0	61.1	69.8
DE VILLIERS (Table Mountain)	243	86.6	86.6	98.3	85.3	54.0	86.6
HELY-HUTCHINSON (Table Mount)	925	76.6	58.7	72.5	36.8	87.4	68.9
KLEINPLAATS (Simon's Town)	1 368	51.4	52.8	80.6	52.5	93.6	95.8
LAND-EN-ZEEZICHT (Helderberg)	451	100.0	98.8	92.0	77.5	97.9	95.5
LEWIS GAY (Simon's Town)	182	31.0	46.8	78.5	67.3	74.2	86.1
VICTORIA (Table Mountain)	128	92.3	92.0	92.0	87.5	101.2	97.3
WOODHEAD (Table Mountain)	954	64.2	63.8	69.5	57.2	66.2	64.7
<b>Total Stored</b>	<b>4 377</b>	<b>2921.5</b>	<b>2790.8</b>	<b>3387.7</b>	<b>2448.8</b>	<b>3588.9</b>	<b>3526.3</b>
<b>Percentages stored</b>		<b>66.7</b>	<b>63.8</b>	<b>77.4</b>	<b>55.9</b>	<b>82.0</b>	<b>80.6</b>

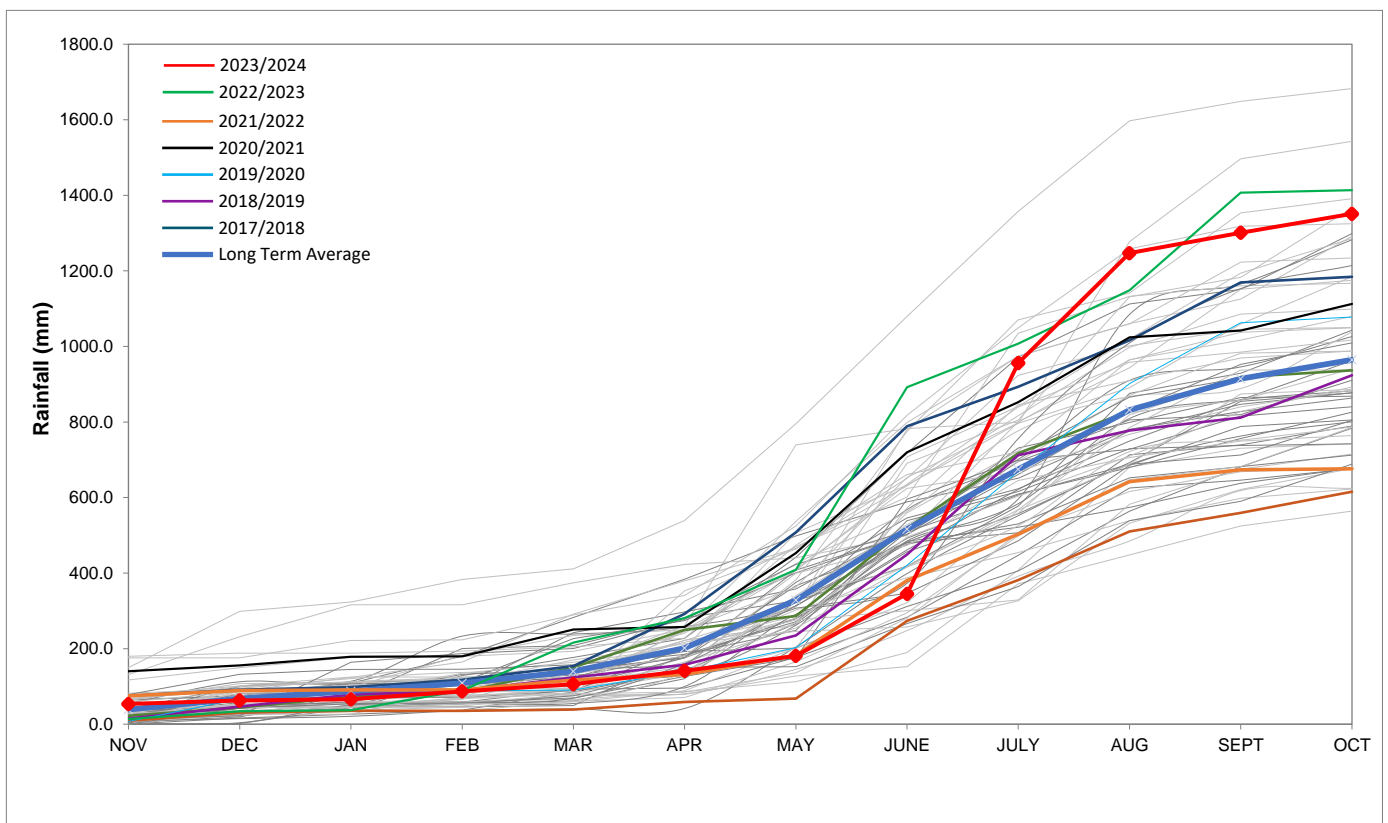
## Rainfall Recorded

RAINFALL (mm)	02-Dec	03-Dec	04-Dec	05-Dec	06-Dec	07-Dec	08-Dec	Dec	
								Total*	LT Average
Blackheath Upper	0.9	0.0	2.0	0.0	5.0	0.0	0.0	7.9	13.0
Brooklands	4.0	5.0	2.0	2.0	10.0	0.0	0.0	23.0	26.9
Newlands	2.0	0.0	4.0	1.0	55.0	0.0	0.0	62.0	47.9
Steenbras	18.0	1.1	0.0	0.0	14.5	0.0	0.0	33.6	36.4
Table Mountain (Woodhead)	13.0	0.0	0.0	32.0	26.5	0.0	0.0	71.5	63.0
Theewaterskloof	0.0	0.0	0.0	0.0	0.0	0.0	0.0	0.0	20.3
Tygerberg	0.7	0.0	2.0	0.0	2.9	0.0	0.0	5.6	10.2
Voëlvlei	0.6	0.0	0.0	0.0	2.5	0.0	0.0	3.1	13.0
Wemmershoek	0.5	0.0	1.6	0.0	1.0	0.0	0.0	3.1	26.7
Wynberg	0.0	1.5	0.0	0.0	6.0	0.0	0.0	7.5	22.0

Notes: \*Total/cummulative rainfall for month indicated above  
LT: Long Term

## Accumulated Monthly Rainfall at Wemmershoek

Note: Wemmershoek station used due to long record and mountainous location



## Drinking Water Quality

SAMPLE PASS RATE		
Month	Water Quality Compliance (%)	Target (%)
Nov-21	99.11	98
Dec-21	99.09	98
Jan-22	99.04	98
Feb-22	99.04	98
Mar-22	98.99	98
Apr-22	98.96	98
May-22	98.90	98
Jun-22	98.96	98
Jul-22	99.46	99
Aug-22	99.47	99
Sep-22	99.46	98.50
Oct-22	99.47	98.50
Nov-22	99.45	98.50
Dec-22	99.36	98.50
Jan-23	99.36	98.50
Feb-23	99.35	98.50
Mar-23	99.29	98.50
Apr-23	99.24	98.50
May-23	99.24	98.50
Jun-23	99.18	98.50
Jul-23	99.19	98.50
Aug-23	99.14	98.50
Sep-23	99.10	98.50
Oct-23	99.10	98.50
Nov-23	99.04	98.50
Dec-23	99.15	98.50
Jan-24	99.16	98.50
Feb-24	99.12	98.50
Mar-24	99.16	98.50
Apr-24	99.20	98.50
May-24	99.21	98.50
Jun-24	99.26	98.50
Jul-24	99.27	98.50
Aug-24	99.31	98.50
Sep-24	99.33	98.50
Oct-24	99.37	98.50

This table shows CCT drinking water quality compliance according to the South African National Standard 241:2015. Compliance, measured against all prescribed chemical and microbiological components, consistently exceeds the very high CCT target of 98.5%. (Overall compliance percentages of continuous sampling and analysis are released on a monthly basis.