

# ROOKIES

## PRODUCT UPDATE

### SOIL-FREE SOD



Minute Grass provides the benefits of sod without the drawbacks of soil. Because the product is grown in sanitized bark on top of plastic, it is three times lighter than traditional sod and is free of weeds. A patented process allows the grass to grow

with less water, under artificial light, and on top of nearly any surface. It can also be stored up to six months under refrigerated conditions.

Minute Grass was developed in France in 1974 and is currently used by 75 percent of all golf courses and indoor facilities there, according to inventor Michel Chamoulaud. It can be grown on hard surfaces successfully or be ready for play on prepared soil in 20 days.

#### MINUTE GRASS

Circle 249 on Postage Free Card

### REPOWER KITS

Two repower kits from Repower Specialists, Ltd. contain everything needed to replace the engines on turf or industrial Cushman Trucksters or Jacobsen walk-behind greens mowers.

Repower kits for Trucksters offer either 16- or 20-hp Onan performer engines. The engines feature electronic ignition, solenoid shift starter, replaceable valve seats and camshaft bearing, full pressure internal lubrication system, single piece aluminum block with cast-iron liners, and a rotating steel blower screen. In addition to the engines, the kits include mounting components, wiring harnesses, accelerator cables, fuel lines, and hardware. Tool kits and service videos are available from Onan.

Repower kits for Jacobsen walk-behind greens mowers include a five-hp, four-cycle Kohler Command 5 engine, which eliminates the need for oil and gasoline mixing. It features overhead valves, Oil Sentry oil protection, automatic compression release, and a five-quart fuel tank. Tool kits and service videos are available from Kohler.

#### REPOWER SPECIALISTS, LTD.

Circle 253 on Postage Free Card

## GET THE POWER! TO DO IT RIGHT

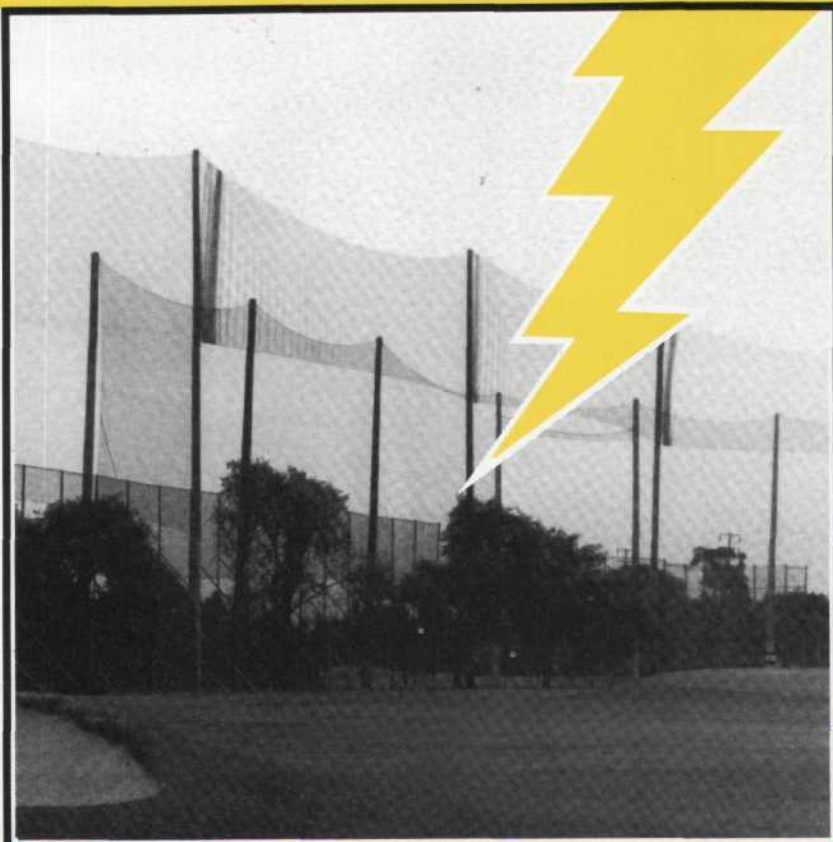
GOLF COURSES,  
DRIVING RANGES AND  
BASEBALL FIELDS

### OUR NETS MEET YOUR SPECS!

It takes a team effort to get a big project done right. At West Coast Netting our **POWER TEAM** makes things happen for you. With 35 years experience making net products we know how to design and build nets for every use and location. Our **POWER TEAM** can even do your complete turn key installation



anywhere in North America. Get the power to do it right, Join the **POWER TEAM**.



Santa Ana Country Club, Costa Mesa, Calif.

**WEST COAST NETTING** PO Box 728, Rancho Cucamonga, 714/987-4708 (800) 854-5741 (outside CA) FAX #714-944-7396

# ROOKIES

## PRODUCT UPDATE

### BAHIAGRASS CONTROL



DMC Weed Control effectively controls bahiagrass in bermudagrass areas. The herbicide acts upon the annual grassy weed as it sprouts. In addition, it fights foxtail and more than 25 broadleaf weeds including chickweed, henbit, dandelion, wild garlic, white clover, and plantain.

The product offers application timing and rate flexibility, depending upon weed and turf type. Combined with water, the 60-percent dispersible granular herbicide is applied as a foliar spray.

#### **THE O.M. SCOTT & SONS COMPANY**

Circle 257 on Postage Free Card

### FERTILIZER INJECTOR

Dosatron's 100-gpm fertilizer injector can be manifolded for greater flow rates, used on a bypass system, or mounted in a series. The compact, portable self-priming injector can be hooked up easily to irrigation systems, including those with solenoid valves. It has externally adjustable injection ratios of 1:50 to 1:500.

Features include side injection and a built-in mixing chamber, operation at low flow and pressure, a bypass system, and an anti-siphon valve. The injector requires no electricity to operate. It is powered by water in the pipe.

#### **DOSATRON INTERNATIONAL, INC.**

Circle 250 on Postage Free Card

### IRON WASHER

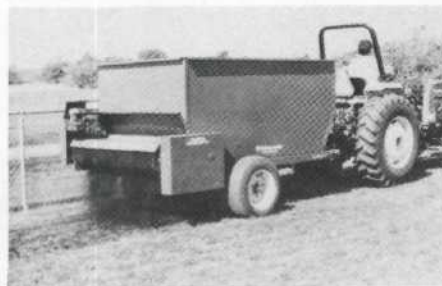
The Par Aide Club Washer scrubs dirty golf irons in front and back, using a pair of brushes. It can be mounted almost anywhere on a golf course, including below a ball washer in tandem with a spike brush or shoe cleaner.

Housed in durable plastic, each unit comes with a flanged base for mounting on horizontal surfaces. For vertical surface mounting, an optional mounting bracket is available.

#### **PAR AIDE PRODUCTS CO.**

Circle 251 on Postage Free Card

### SPREADER/TOPDRESSER



The Bear spreader/topdresser has a five-cubic-yard capacity. Its 60-inch nylon brush spreads various materials evenly and without clumps.

The unit features tough steel gauge construction and a chain-driven floor. Wide flotation tires minimize turf damage during topdressing.

#### **PRSM, INC.**

Circle 252 on Postage Free Card

### PESTICIDE STORAGE GUIDELINES

A guidebook entitled "How To Build Your Own Integrated Pesticide Storage-Containment-Recycling System" details an efficient system for pesticide storage which has been approved by the Ohio Environmental Protection Agency and the Ohio Department of Agriculture.

Used in either newly constructed or retrofitted facilities, the system provides protection from pesticide spills and leaks and

can reduce or eliminate storage and disposal of chemical wastes or residues. It also helps increase safety and speed during mixing and loading operations.

#### **F.R.H., INC.**

Circle 255 on Postage Free Card

### SPRAYER



Cushman's 240-gallon sprayer is designed for the fifth wheel attachment to its Turf-Truckster vehicle. It attaches to the vehicle with a two-inch ball hitch.

The Turf-Truckster must be equipped with the special quick-attach hitch and power take-off accessory for operating the sprayer pump. The quick-attach hitch can also be used for all fifth-wheel implements from the company.

The sprayer is equipped with a 240-gallon fiberglass tank which has high-strength structural properties and designed-in resistance to chemical corrosion and ultraviolet rays. The sprayer trailer features a heavy-duty tubular steel frame, equipped with electric brakes, jack stand, and an access step. It has 24-x-13-inch turf tires on 12-inch rims.

Spray operation of one, two, or three booms is controlled from the vehicle's seat, as is spray application pressure. The spray boom has a self-leveling feature for accurate application over uneven ground surfaces. Boom height can be adjusted from six to 24 inches. The sprayer also comes with a high-pressure hand spray gun equipped with 50 feet of 1/2-inch hose.

The Turf-Truckster's ground speed governor control helps ensure accurate spray application over all types of terrain. A 440 Raven computerized controller is available for fully automated spraying.

#### **CUSHMAN, INC.**

Circle 254 on Postage Free Card

# ROOKIES

## PRODUCT UPDATE

### AERATOR/POLYMER PLANTER



The Olathe Model 71/831 Aerator/Polymer Planter plants water-absorbing polymers that form a subsurface water reservoir where plant roots can absorb water as needed. The Model 71 Aerator cuts grooves in the ground with rotating blades, then the Model 831 Polymer Planter deposits the polymers into the grooves through stationary planter blades. A 48-x-36-inch

drag mat then covers the slits with soil.

The aerator has 48 blades on six-inch centers, a 48-inch swath, and is PTO-powered with a tractor of 40-hp or more with a three-point hitch. It features heavy-duty steel construction. Maximum blade depth is 2-1/2 inches.

The polymer planter is ground-powered. It features heavy-duty steel construction, a three-point Category One hitch, and eight blades on six-inch centers. It has a 48-inch swath, a polymer hopper capacity of 150 lbs., sight glass, and eight feed chutes on plow blades. The feed rate is adjustable from 20 to 250 lbs. per acre.

**OLATHE MANUFACTURING, INC.**

Circle 256 on Postage Free Card

### NUTRIENT MANAGER

The Turf Anser Management System by Karsten elevates spoon feeding of

turfgrasses to a new level. The on-site system of nutrient analysis and fertigation enables superintendents to correct deficiencies or prevent overfertilization.

A scanner reveals the nutrient content of turf tissue samples in minutes. The results are fed directly into a computer for analysis and comparison to desired levels. By identifying deficiencies or excess levels of nutrients, the amount of nitrogen, phosphorus, potassium, and micro/macro nutrients can be adjusted through fertigation. The four-pump fertilizer injector permits delivery of liquid nutrients into the irrigation water in precise amounts.

The computer can record nutrient levels for a large number of turf areas on the sports facility. The injector can be adjusted to fertilize specific areas according to their needs.

**KARSTEN TURF COMPANY**

Circle 257 on Postage Free Card

## PUT THE BITE ON ALGAE!



The Activated Oxygen System  
Kills Algae and Bacteria

- Breaks Up Stratification
- Distributes Oxygen Everywhere
- No Chemical Residue
- Reduces Suspended Solids
- Stops The Odor Cycle

Our engineered system treats poor water quality problems from bottom to top. Aeration systems increase dissolved oxygen. Ecopak™ adds the ozone bonus which puts the bite on algae and bacteria.

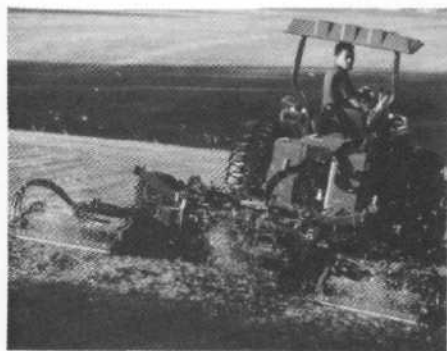


Contact FLEXALON INC. at (805) 541-2206 Fax (805) 541-2532 For Your Nearest Distributor

# ROOKIES

## PRODUCT UPDATE

### GANG REEL MOWERS



Kubota's hydraulically driven Verti Reel gang mowers are available in five- and seven-gang models. The five-gang unit is designed for use with the Kubota L3250 Turf Special tractor. The seven-gang unit operates with the M4030SU Turf Special tractor.

A power pack mounted on the tractor's three-point hydraulic hitch enables the op-

erator to clearly view the reels as they cut. Locating the power pack on the three-point hitch enables the operator to turn lock-to-lock without the rear tires interfering with the frame.

The five-gang hydraulic Verti-Reel is two units in one: a quality-cut blade reel mower that easily converts to a vertical cutting unit.

Powerful direct-drive 30-inch reels cut a

swath of more than 11 feet.

The lightweight seven gang unit has eight-blade, 7-1/2-inch diameter reels that clip every 1.4 inch of turf. Reel speed is adjustable from 210 to 1400 rpm, independent of ground speed. Tire surface distributes weight over a larger area, resulting in less compaction.

**KUBOTA TRACTOR CORP.**

Circle 219 on Postage Free Card

# SCOREBOARD

## CLASSIFIEDS

**CLASSIFIED ADVERTISING RATES:** \$50.00 per inch payable in advance. One inch minimum. There are about 50 words per inch. Send copy with check for \$50.00 at least two weeks prior to issue date to: Golf & sportsTURF, P.O. Box 8420, Van Nuys, CA 91409. Blind box numbers are available. Special borders and rules will be billed at display rates. Classified ads are not commissionable.

### STOLON PLANTING SERVICE

We plant LARGE turf areas mechanically.

From Sod to plant stolons in seconds.

**FAST \* ECONOMICAL \* PROVEN**

Call or write for brochure and specifications.

**FLANNIGAN Stolon Planting Service**

1462 Keys Place, Vista, CA 92083 OFF: (619)

630-8910 FAX: (619) 945-6783

### STADIUM SUPERINTENDENT

For new 6,500-seat Major League Spring Training Complex with six full-size diamonds and a practice infield. Extensive knowledge of the methods, materials, and practices used in Florida turf and sports field maintenance for professional teams required. The ability to work under pressure, pay attention to detail, prepare budgets, plan strategically, assist in marketing and scheduling efforts also required. Ability to establish and maintain cooperative and effective relationships with general public, city officials and private groups crucial. BA/BS in related fields, five years supervisory experience in similar facility. \$36,150 - \$40,000 DOQ, plus liberal benefits package. Please send resume ASAP to the City of Homestead, Human Resources, 790 N. Homestead Blvd., Homestead, FL 33030. Deadline February 28, 1991.

## ADVERTISER INDEX

Amiad .....	15	John Deere .....	6-7
Belton Industries .....	19	Lasco .....	11
C.C. Bucket Forks .....	22	Lidco .....	29
Cal Poly Pomona .....	32	Missouri Paint Co .....	13
Cushman Inc .....	3	O. M. Scott & Sons .....	21-21
Diamond Paint .....	29	Par-Ex .....	14
Fine Lawn Inc .....	5,25,39	Partac Peat Corp .....	32,42
Flexalon .....	41	Rain Bird .....	37
Four Star Services .....	19	Tee-2-Green .....	43
Fuerst Bros .....	27	Turf Seed Inc .....	44
International Seed .....	2	V.I.T Products .....	28
Jaydee Mfg .....	27	West Coast Netting .....	38

**NOW AVAILABLE NATIONWIDE!**  
From Distribution Centers in  
CA, FL, IL, NJ and TEXAS  
with more being added

**DIAMOND-DRY.**  
CALL TOLL FREE:  
**1-800-247-2326**  
NATIONAL DISTRIBUTOR:  
PARTAC PEAT CORPORATION  
Kelsey Park, Great Meadows, N.J. 07838  
IN N.J. 908-637-4191

Circle 218 on Postage Free Card