

# UC Santa Cruz

## UC Santa Cruz Previously Published Works

### Title

Changes in concentrations of cervicovaginal immune mediators across the menstrual cycle: a systematic review and meta-analysis of individual patient data.

### Permalink

<https://escholarship.org/uc/item/5tf1019d>

### Journal

BMC Medicine, 20(1)

### Authors

Hughes, Sean

Levy, Claire

Katz, Ronit

et al.

### Publication Date

2022-10-05

### DOI

10.1186/s12916-022-02532-9

### Copyright Information

This work is made available under the terms of a Creative Commons Attribution License, available at <https://creativecommons.org/licenses/by/4.0/>


Peer reviewed

REGISTERED REPORT

Open Access



# Changes in concentrations of cervicovaginal immune mediators across the menstrual cycle: a systematic review and meta-analysis of individual patient data

Sean M. Hughes<sup>1</sup>, Claire N. Levy<sup>1</sup>, Ronit Katz<sup>1</sup>, Erica M. Lokken<sup>1,2</sup>, Melis N. Anahtar<sup>3</sup>, Melissa Barousse Hall<sup>4</sup>, Frideborg Bradley<sup>5</sup>, Philip E. Castle<sup>6,7</sup>, Valerie Cortez<sup>8</sup>, Gustavo F. Doncel<sup>9</sup>, Raina Fichorova<sup>10</sup>, Paul L. Fidel Jr<sup>11</sup>, Keith R. Fowke<sup>12</sup>, Suzanna C. Francis<sup>13</sup>, Mimi Ghosh<sup>14</sup>, Loris Y. Hwang<sup>15</sup>, Mariel Jais<sup>16</sup>, Vicky Jespers<sup>17</sup>, Vineet Joag<sup>18</sup>, Rupert Kaul<sup>19</sup>, Jordan Kyongo<sup>20</sup>, Timothy Lahey<sup>21</sup>, Huiying Li<sup>22</sup>, Julia Makinde<sup>23,24</sup>, Lyle R. McKinnon<sup>12,25,26</sup>, Anna-Barbara Moscicki<sup>15</sup>, Richard M. Novak<sup>27</sup>, Mickey V. Patel<sup>28</sup>, Intira Sriprasert<sup>29</sup>, Andrea R. Thurman<sup>9</sup>, Sergey Yegorov<sup>30</sup>, Nelly Rwamba Mugo<sup>2,31</sup>, Alison C. Roxby<sup>2,32,33</sup>, Elizabeth Micks<sup>1\*</sup>, Florian Hladik<sup>1,32,33\*</sup>  and The Consortium for Assessing Immunity Across the Menstrual Cycle

## Abstract

**Background:** Hormonal changes during the menstrual cycle play a key role in shaping immunity in the cervicovaginal tract. Cervicovaginal fluid contains cytokines, chemokines, immunoglobulins, and other immune mediators. Many studies have shown that the concentrations of these immune mediators change throughout the menstrual cycle, but the studies have often shown inconsistent results. Our understanding of immunological correlates of the menstrual cycle remains limited and could be improved by meta-analysis of the available evidence.

**Methods:** We performed a systematic review and meta-analysis of cervicovaginal immune mediator concentrations throughout the menstrual cycle using individual participant data. Study eligibility included strict definitions of the cycle phase (by progesterone or days since the last menstrual period) and no use of hormonal contraception or intrauterine devices. We performed random-effects meta-analyses using inverse-variance pooling to estimate concentration differences between the follicular and luteal phases. In addition, we performed a new laboratory study, measuring select immune mediators in cervicovaginal lavage samples.

**Results:** We screened 1570 abstracts and identified 71 eligible studies. We analyzed data from 31 studies, encompassing 39,589 concentration measurements of 77 immune mediators made on 2112 samples from 871 participants. Meta-analyses were performed on 53 immune mediators.

Antibodies, CC-type chemokines, MMPs, IL-6, IL-16, IL-1RA, G-CSF, GNLy, and ICAM1 were lower in the luteal phase than the follicular phase. Only IL-1 $\alpha$ , HBD-2, and HBD-3 were elevated in the luteal phase. There was minimal change

\*Correspondence: emicks@uw.edu; florian@uw.edu

<sup>1</sup> Department of Obstetrics and Gynecology, University of Washington, Seattle, WA, USA

<sup>33</sup> Vaccine and Infectious Disease Division, Fred Hutch, Seattle, WA, USA

Full list of author information is available at the end of the article



between the phases for CXCL8, 9, and 10, interferons, TNF, SLPI, elafin, lysozyme, lactoferrin, and interleukins 1 $\beta$ , 2, 10, 12, 13, and 17A. The GRADE strength of evidence was moderate to high for all immune mediators listed here.

**Conclusions:** Despite the variability of cervicovaginal immune mediator measurements, our meta-analyses show clear and consistent changes during the menstrual cycle. Many immune mediators were lower in the luteal phase, including chemokines, antibodies, matrix metalloproteinases, and several interleukins. Only interleukin-1 $\alpha$  and beta-defensins were higher in the luteal phase. These cyclical differences may have consequences for immunity, susceptibility to infection, and fertility. Our study emphasizes the need to control for the effect of the menstrual cycle on immune mediators in future studies.

**Keywords:** Menstrual cycle, Cytokine, Chemokine, Cervix, vagina, Female genital tract, Systematic review, Meta-analysis

## Background

### Rationale

It is important to understand immunity in the cervicovaginal tract (CVT) given its key role in pathogen entry for sexually transmitted infections (STIs). A clear understanding of CVT biology is crucial for intervention studies with immune outcomes (such as HIV pre-exposure prophylaxis, treatment of bacterial vaginosis, and mucosal vaccination). In addition, understanding the immune consequences of new forms of hormonal contraception requires understanding this natural baseline.

The menstrual cycle has important effects on CVT immunity. The follicular or proliferative phase of the menstrual cycle starts on the first day of menstrual bleeding and is characterized by increasing estradiol and low progesterone. The luteal or secretory phase of the cycle begins following ovulation and is characterized by high progesterone. Multiple studies suggest that immunity changes in the CVT across the menstrual cycle, but it is unclear whether STI risk peaks at a particular stage of the menstrual cycle. One hypothesis holds that the luteal phase represents a “window of vulnerability” to STIs, where immunity is suppressed to allow tolerance of a possible embryo [1]. This hypothesis, while plausible, remains unproven, with evidence mainly from studies of non-human primates [2–4] and from conflicting human studies [5–7].

Many published studies describe how immune mediators (cytokines, chemokines, immunoglobulins, and other factors) in the CVT change during the menstrual cycle [8–33]. Despite this abundance of studies, our knowledge of the immunological impact of the menstrual cycle remains somewhat lacking and could be improved by a systematic compilation of results from all studies. Moreover, for some immune mediators, data interpretation is complicated at times by conflicting results between studies. For example, four studies have observed higher interleukin 6 (IL-6) concentrations during the follicular phase [19, 21, 23, 26], while two other studies have

observed higher IL-6 concentrations in the luteal phase [11, 12].

One reason for the variability observed in studies of immune mediators in the CVT may be the diversity of the experimental approaches used to collect and measure immune mediators. Sample types include cervicovaginal lavage (CVL), menstrual cup, brush, and swab. Assay types include ELISA, bead-based platforms (such as Luminex), and other antibody-based techniques. Menstrual cycle phase has been determined by the date of last menstrual period and by serum or urine hormone levels. Outcomes include raw immune mediator concentrations or levels normalized to total protein. Determining which of these approaches to specimen collection and testing best capture the underlying biological changes would be of benefit to future studies.

To address these important gaps, we performed a systematic review and meta-analysis of individual participant data (IPD) of immune mediators in the CVT during the menstrual cycle. The primary objective of this study was to estimate differences in concentrations of immune mediators between the follicular and luteal phases of the menstrual cycle. The secondary objectives of this study were to compare how four technical factors (sample type, assay type, method of determining menstrual cycle phase, and normalization of immune mediator concentrations to total protein) influence the results and affect our conclusions about the changes that occur throughout the menstrual cycle.

In addition to summarizing previous studies, we performed a new study of 200 paired cervicovaginal lavage samples from the follicular and luteal phases. This study had an exploratory component, where we measured immune mediators included in only few previous studies, and a validation component, where we specifically tested immune mediators estimated by the meta-analysis to differ across the menstrual cycle. By performing this additional study, we confirmed the accuracy of the meta-analysis and broadened our knowledge of immune changes across the menstrual cycle.

## Methods

### Protocol for systematic review and meta-analysis

This methods section constitutes a protocol for a systematic review and meta-analysis. This protocol was drafted in advance of performing the review and submitted as a registered report. At the time of submission (July 2020), tests of the search strategy and of the abstract and manuscript screening systems had been performed, but formal abstract screening had not begun. Prior to drafting the protocol, we performed a pilot meta-analysis with data obtained from several studies [10–12, 15, 19, 21, 23, 26]. These studies were screened in the same way as all other search results.

This protocol is in compliance with the Preferred Reporting Items for Systematic Review and Meta-Analysis Protocols (PRISMA-P) guidelines [34]. The final manuscript complies with the Preferred Reporting Items for a Systematic Review and Meta-Analysis of Individual Participant Data (PRISMA-IPD) guidelines [35]. Completed checklists are available in Additional file 1. The overall study design is shown in Table 1.

While performing the study, we needed to amend this protocol. In Additional file 2, we gave the date of each amendment, described the change, and gave the rationale. Changes were not incorporated into this methods section.

### Eligibility criteria

#### Study eligibility criteria

We included studies reporting original data on any immune mediator concentrations by menstrual cycle

phase (determined by date of last menstrual period [LMP] or hormone levels, including progesterone, estradiol, and/or luteinizing hormone) in CVT samples from menstruating women. Immune mediators were defined as immune-related proteins, including cytokines, chemokines, immunoglobulins, antimicrobial peptides, and growth factors. We only included studies that measured concentrations using antibody-based methods (such as ELISAs, Luminex and other bead-based assays, and MSD assays). We did not include studies using other methods, such as gene expression or mass spectrometry-based proteomics or metabolomics. CVT samples were defined as secretions or fluid, such as CVL, menstrual cup, or swab. We included unpublished studies that met our eligibility criteria.

#### Participant eligibility criteria

Participant-level eligibility criteria allowed us to include subsets of participants from studies where only some subjects were eligible (such as studies comparing pre- and post-menopausal women, where only the pre-menopausal women were included). Eligible participants were post-menarche, pre-menopausal, non-pregnant women not using hormonal contraception or an intrauterine device (IUD) and not receiving other exogenous hormones. Because intra-study comparisons of follicular and luteal phases were performed, each study had to have both follicular and luteal phase samples, but single samples from individual participants were eligible. We excluded participants who received a vaginal intervention (including placebo), but participants receiving no treatment or a systemic placebo were eligible. Baseline, pre-intervention visits were acceptable (such as if all participants had baseline visits, a cross-sectional analysis could be performed). Samples from women with cervical or vaginal pathology, such as bacterial vaginosis, vulvovaginal candidiasis, STIs, or cervical dysplasia, were eligible. We chose to include such samples because cervical or vaginal pathology is a normal part of life for most women at some point. In addition, we expected pathology to have no association with cycle phase (for example, we expected BV to be equally common in both phases of the cycle), so it would not confound our menstrual cycle analysis.

#### Information sources

We searched PubMed, Web of Science, Embase, and the Global Health Database for articles and conference abstracts published in English since 2000 (inclusive). We also reviewed the bibliographies of included studies and relevant reviews to identify additional studies. As recommended in chapter 4 of the Cochrane Handbook for Systematic Reviews of Interventions, we circulated our list

**Table 1** Study design

Stage	Step
1	Protocol development
2	Database searches
3	Screen abstract search results
4	Screen full-text manuscripts against eligibility criteria
5	Data extraction, risk of bias assessment, request IPD
6	Database searches with updated terms
7	Individual study analysis
8	Interim meta-analysis
9	Choose immune mediators for exploratory and validation study
10	Wet lab: Perform exploratory and validation study
11	Incorporate exploratory and validation study results into final meta-analysis
12	Grade strength of evidence

of included studies to authors when requesting individual participant data and asked for recommendations of additional studies, whether published or unpublished [36].

### Search strategy

Complete search strategies are listed in Additional file 1. These search strategies were designed in advance of performing the study. We planned in advance that we could update the search strategies during the course of the study: specifically, if we found published studies through review of bibliographies or author recommendations that were not captured by our search strategy. In that case, we could update the search terms near the completion of this project so that the search would capture most of these additional studies as well. We would then screen all additional results found by the updated strategy.

### Study records

#### *Data management and selection process*

Search results were de-duplicated using PubMed IDs, the text of the titles and abstracts, and manual review of duplicate DOIs. Abstracts were loaded into abstrackr [37] for screening. Two reviewers (CNL and SMH) independently screened all abstracts for eligibility. We obtained the full text of all articles identified as potentially eligible by either reviewer. Both reviewers independently reviewed full texts, guided by a Google Forms questionnaire (Additional file 1) to determine eligibility and record study information. We recorded reasons for exclusion of a study in the questionnaire. Differences in opinion were resolved by discussion. If the two reviewers were unable to agree, a third study author (FH) made the final decision. If conference abstracts appeared to meet inclusion criteria, but could not be linked to a publication, we contacted the authors to locate the publication. We attempted to extract summary data from all studies using the Google Forms questionnaire (Additional file 1). Specifically, if available, we extracted estimates of the difference in concentrations of each immune mediator between the follicular and luteal phases, as well as the statistical methodology used to generate that estimate. We anticipated that this summary data would be unavailable from many manuscripts.

#### *Data collection process and individual participant data integrity*

We requested individual participant data (IPD) from study authors via email, following up at least three times. We accepted data in any format provided. After receipt of IPD, we prepared a data summary document (including the number of samples, number of immune mediators, menstrual phase, covariate summaries, the number

of samples below LOD, and the immune mediator means and 95% CIs). We sent this summary document to the study authors and requested that they confirm that we received the complete and correct data. We also compared the IPD we received and the results of our analyses to published reports, where available, to confirm that the data we received was correct.

If we were unable to obtain IPD for a particular study, we recorded the reasons that prevented obtaining the data and attempted to extract IPD from the published article. Two reviewers independently extracted the data and discussed differences, with a third reviewer resolving discrepant results and disagreements when necessary. Data were extracted from published figures using software such as WebPlotDigitizer [38], if appropriate.

If IPD was unavailable from the authors and could not be extracted from the published article, we recorded the reasons that prevented obtaining the data. If summary data was available (differences between follicular and luteal phases, extracted for all studies as described above) and matched the study-level analyses described below, we included the study at the meta-analysis level in the two-stage approach described below. For papers where only quantile statistics were reported, we obtained means and standard deviations (necessary for meta-analysis) using previously devised methods [39–42].

### Data items

We collected the following study-level data items:

- Method of determination of menstrual phase (date of last menstrual period or hormone levels including sample type and specific hormones measured)
- Sample type (cervicovaginal lavage [including clinician- or participant-collected, volume, and lavage buffer], swab [ectocervical, endocervical, or vaginal], menstrual cup, other)
- Country or countries of clinical sites (grouped into the geographical region)

We collected the following sample-level data items:

- Immune mediator concentrations (pg/mL)
- Menstrual phase (luteal/secretory, follicular/proliferative, periovulatory)
- Additional covariates (when collected): total protein concentrations, age, bacterial vaginosis status, vulvovaginal candidiasis status, sexually transmitted infection status (including gonorrhoea, chlamydia, trichomoniasis, herpes simplex virus, HIV), race/ethnicity, recent sexual contact, condom use, vaginal pH,

hemoglobin contamination, and any other available covariates from each study.

We collected the following immune mediator-level data items:

- Assay method (ELISA, bead-based [e.g., Luminex], MSD, possibly others)
- Lower limits of detection

#### **Data standardization**

The definition of menstrual phase was standardized across studies and based on either serum progesterone level, days since luteinizing hormone (LH) surge, or days since the start of the last menstrual period (LMP). If multiple measures were available, we defined the menstrual phase based on hormone levels. For serum progesterone, the follicular phase was defined as serum progesterone < 1 ng/mL, and luteal was defined as serum progesterone  $\geq$  3 ng/mL. We chose these criteria based on a study [43] showing that the vast majority of pre-ovulatory samples have progesterone levels below 1 ng/mL and the vast majority of post-ovulatory samples have progesterone levels above 3 ng/mL. We excluded samples falling in the 1–3 ng/mL window, because these typically occur beginning on the day of the luteinizing hormone peak and ending two days after. For studies reporting LH surge without progesterone levels, follicular was defined as after menses and prior to LH surge, while luteal was defined as 2–12 days following LH surge. For studies reporting LMP, we only included participants reporting regular menstrual cycles. Follicular phase included days 5–12 (inclusive) since the start of the last menstrual period, and luteal phase included days 19–24 (inclusive) since the start of the last menstrual period. In some circumstances, decisions about sample inclusion were made on a case-by-case basis by discussion between two reviewers. The circumstances could include (1) samples falling outside the windows for days since the last menstrual period, LH surge, or progesterone concentration; (2) studies where hormone concentrations or days since LMP were used to determine menstrual phase, but those data are no longer available; or (3) studies where menstrual phase was determined by another method, such as urinary progesterone metabolite concentration.

We included periovulatory samples as a third phase, with this phase defined by LH levels above 20 mIU/mL in serum [44] or 25 mIU/mL in urine [45].

All additional variables were standardized across studies to the extent possible, based on the data. We defined assay type, sample type, and method of determination of menstrual phase as described above. We treated swabs from different

anatomic sites (ectocervical, endocervical, vaginal) as different sample types. CVLs were considered a single sample type, but differences in methods of collection were explored in sensitivity analysis as described below. We assigned consistent cross-study definitions to additional covariates as much as possible based on the data collected. For example, for bacterial vaginosis (BV), if one study reported Nugent scores and another study reported BV based on Amsel criteria, we converted these variables into a single variable for BV, with values of positive, indeterminate, and negative.

If the limits of detection were unavailable, we attempted to obtain the information from the manufacturer of the assay. If the limits of detection were not available from the manufacturer, we classified the values as follows: undetectable when two or more samples have the lowest reported concentration for a given immune mediator in a particular study. Otherwise, samples were classified as detectable.

#### **Outcomes and prioritization**

**Primary outcome** For immune mediators that were detectable in  $\geq$  50% of samples, the outcome was the difference in mean log<sub>2</sub> concentration between the follicular and luteal phases. For immune mediators detectable in < 50% of samples, the outcome was risk ratio of detection between the follicular and luteal phases, with risk defined as the number of samples in which the immune mediator was detected out of the total number of samples. In addition, we compared periovulatory samples to follicular and luteal phase samples.

#### **Secondary outcomes**

- For sample type and assay type, the outcomes were effect size for concentration and detectability (higher concentrations and levels of detectability were considered superior) from meta-regression. A second outcome was the standard error of the menstrual cycle effect sizes from subgroup analysis (lower standard errors were considered superior).
- For menstrual phasing method and normalization to total protein, the outcomes were within-study comparisons of the standard error of the menstrual cycle effect sizes (lower standard errors were considered superior). For menstrual phasing method, we also assessed misclassification rates from studies that reported both days since last menstrual period and hormone levels.

#### **Risk of bias of individual studies**

We assessed the risk of bias in each study using a custom tool adapted from the Newcastle Ottawa scale

(Additional file 1). This information was used in determining the strength of evidence.

## Data analysis

### Criteria for quantitative synthesis

We performed meta-analysis for all immune mediators present in at least two included studies. Data analysis was performed using R version 4.0.0.

### Data handling, combination, and summary measures

Data processing: Sample wells falling below the lower limit of detection were assigned a value of the study-specific lower limit of detection divided by 2. Wells falling above the upper limit of detection were assigned a value of the study-specific upper limit of detection multiplied by 2. If replicate wells were run for a given sample, the raw concentrations were averaged. Data was then log<sub>2</sub>-transformed. Each sample was also scored as “detectable” or “non-detectable,” with the sample counting as detectable if it was detected in at least one well.

### Primary outcome analysis plan

We used a two-stage approach for meta-analysis: first analyzing each study separately and then combining the summary statistics from each study to generate meta-estimates of effect. We chose this approach to allow inclusion of studies where summary data was available but IPD was not.

- Study level: We fit a separate linear mixed-effects model for each immune mediator, with participant as a random effect and menstrual phase as a fixed effect. The primary analysis was unadjusted. For immune mediators that were detectable in  $\geq 50\%$  of samples, the model outcome was the difference in mean log<sub>2</sub> concentration between the follicular and luteal phases. For immune mediators detectable in  $< 50\%$  of samples, mixed logistic models were used to compare the risk of detection (i.e., likelihood of detection) between the follicular and luteal phases using a risk ratio. Specifically, risk of detection was defined as the number of samples in which the immune mediator was detected out of the total number of samples.
- Meta-analysis level: We performed random effects meta-analysis using inverse-variance pooling to estimate the pooled mean difference in log<sub>2</sub> concentrations of each immune mediator between the follicular and luteal phases. We reported meta-effect sizes and their 95% CIs and displayed forest plots. We reported raw *p*-values as well as *p*-values adjusted for the number of immune mediators with the Holm and false discovery rate methods. We reported two analyses: an unadjusted analysis and an analysis adjusted

by meta-regression for assay type, sample type, method of determining menstrual phase, and geographical region.

### Secondary outcome analysis plan

For assay type and sample type, we performed meta-regression after the two-stage approach described above. In addition, we performed subgroup analysis stratifying by each covariate (assay type, sample type) and compared the standard error of the menstrual cycle effect sizes.

For the method of the menstrual phase, we analyzed studies that reported both hormone levels and days since the first day of LMP. For those studies, we performed the menstrual cycle analysis separately using each method of determining the menstrual phase. We then compared the standard errors within study.

For normalization to total protein, we only used data from studies reporting total protein concentrations. We performed the menstrual cycle analysis separately on the raw immune mediator concentrations and on the immune mediator concentrations normalized to total protein. We then compared the standard errors within each study.

### Exploration of variation in effects

We reported  $\chi^2$  tests and the  $I^2$  statistic to summarize between-study heterogeneity in the menstrual cycle effect. For immune mediators with high levels of heterogeneity ( $I^2 > 75\%$ ), we attempted to explain the heterogeneity through subgroup or sensitivity analysis.

**Sensitivity Analyses:** The goal of the sensitivity analyses was to determine how robust the results were to analytic assumptions. We compared the results of several alternative analyses to the primary analysis described above.

- Sample-level covariates: Because the available participant-level covariates differed between studies, our primary study-level analysis did not include any fixed effects except for the menstrual phase. Here, we repeated the study-level analyses and included all relevant covariates for each study. We then performed a meta-analysis on the effect of the menstrual cycle phase as estimated in these models and compared the results to our primary analysis.
- One-stage vs. two-stage meta-analysis: Rather than analyze each study separately, we pooled the raw data from all studies and assessed the effect of the menstrual phase in a single model per immune mediator, with participant and study as random effects.
- Variation in CVL methods: We compared different methods of obtaining CVLs, including participant- vs. clinician-collected sample, lavage volume, and

lavage medium. It was difficult to predict in advance how many studies would be available in each category, so we grouped CVL methods into categories once we collected the studies. The outcomes were effect size for concentration and detectability (higher concentrations and levels of detectability were considered superior) from meta-regression.

#### **Alternative to quantitative synthesis**

Immune mediators measured in only one study or that could not be included in the meta-analysis for any other reason were listed as areas for further research.

#### **Data integrity and evidence strength**

##### **Meta-biases**

We assessed publication bias and selective outcome reporting. We attempted to limit bias due to selective outcome reporting by requesting IPD for all immune mediators measured, regardless of which were reported in published studies. To attempt to limit publication bias, we sought out unpublished studies by requesting them from authors who contributed IPD from published studies and by including conference abstracts in our search strategy. To assess publication bias, we reported Egger's test and funnel plots for immune mediators where ten or more studies existed.

##### **IPD integrity**

If any issues with study data were uncovered when we checked the IPD, we reported these issues and any corrective actions taken.

#### **Assessment of strength of the body of evidence**

We assessed the strength of the body of evidence using the GRADE methodology [46], with the instrument shown in Additional file 1. Two reviewers (CNL and SMH) performed the assessments independently and then came to a consensus, with disagreements resolved by a third author (FH).

We assessed the strength of the body of evidence for each immune mediator in five domains (risk of bias, inconsistency, indirectness, imprecision, and publication bias), each of which could lead to downgrading of the strength of evidence. We also assessed domains which could lead to upgrading of the strength of evidence, including large magnitude of effect (defining large as 5-fold and very large as 10-fold) and residual confounding that would be likely to strengthen the observed effect (or lack thereof). Randomization and dose responses were not taken into account as they are not relevant for these studies (participants cannot

be randomized to a particular phase of the cycle and dose is irrelevant for the cycle).

We assigned an overall strength of evidence score to each immune mediator based on a four-star scale as follows: high (further research is unlikely to change our confidence or the estimate of the effect), moderate (further research may change our confidence and the estimate of the effect), low (further research will likely change our confidence and the estimate of the effect), and very low (further research will very likely change our confidence and the estimate of the effect).

#### **Additional wet lab assays**

##### **Sample cohort**

As part of this review and meta-analysis, we performed one additional study including an exploratory and a validation component. We used CVL samples from the Kenya Girls Study, a longitudinal cohort study of adolescent girls followed for acquisition of sexually transmitted infections [47]. We chose samples using the following requirements: no use of hormonal contraception, at least one follicular and one luteal phase sample available from the same participant (based on the date of LMP), STI testing and Nugent scoring for BV performed, and non-intermediate vaginal flora (Nugent score either 0–3 or 7–10). We measured serum progesterone to assign samples to the follicular or luteal phase. We measured total protein concentrations in CVL samples. Because sexual activity and exposure to semen may affect CVT immunity, we measured kallikrein-3 (also known as prostate-specific antigen). Similarly, blood contamination of the samples may influence immune mediator concentrations, so we measured hemoglobin. The sample size was designed to be approximately 200 samples from approximately 100 women. This size was determined based on feasibility and cost. All participants provided written, informed consent in the Kenya Girls Study as described in the main manuscript for that study [47]. Only deidentified samples were used as part of this study.

##### **Exploratory study**

The purpose of the exploratory component of the study was to increase the strength of evidence for immune mediators that were measured in only few studies. We selected the mediators to be measured after we obtained data from all studies for meta-analysis. We chose approximately ten immune mediators that were measured in only 1–2 studies, with the total number of immune mediators determined based on cost and feasibility. We gave preference to mediators of particular biological interest based on the literature and preliminary results of the



meta-analysis. We incorporated the measurements from the exploratory study into the final meta-analysis as an additional study.

### **Validation study**

We expected that the meta-analysis would identify a number of immune mediators that differed in concentration across the menstrual cycle. In the validation component of the study, we experimentally tested the accuracy of the meta-analysis by selecting 2–3 immune mediators that changed across the menstrual cycle and measuring them in the cohort described above. We determined the statistical power and expected result for each selected immune mediator before performing the measurements, but after performing the meta-analysis. The expected result was a direction of effect (increased or decreased in the luteal phase compared to the follicular). The power was determined using the sample size we selected above and the effect size and standard deviation from the meta-analysis. We only performed validation measurements for immune mediators where we had power greater than 90%. We considered the results to validate the meta-analysis for those immune mediators where we observed an effect in the predicted direction with a  $p$ -value < 0.05. Measurements from the validation study were incorporated as an additional study into the meta-analysis.

### **Immune mediator quantification using MSD and ELISA**

Concentrations of selected immune mediators were measured using Meso Scale Discovery (MSD) R-Plex/U-Plex kits and ELISA. MSD assays were used where available because they allow simultaneous detection of multiple immune mediators in the same well. ELISA was used for immune mediators that were unavailable or cost-prohibitive by MSD. When ELISAs were used, they were purchased from R&D Systems wherever possible. To measure kallikrein-3, we used the Human Kallikrein 3/PSA DuoSet ELISA (R&D Systems, catalog DY1344). To measure progesterone, we used the Progesterone ELISA kit (Enzo Life Sciences, catalog ADI-901-011). We planned to measure hemoglobin in an MSD panel with other immune mediators, if compatible, or by Hemastix Blood ID Reagent Strips (Siemens).

Prior to running all of the samples, we chose the appropriate dilution for each analyte by running a pilot set of samples run with no dilution, 1:10 dilution, and 1:100 dilution (greater dilutions performed as needed). The diluent for CVL samples was 1% bovine serum albumin in phosphate buffered saline, unless a different diluent was required for a particular kit. The diluent for serum samples was the assay buffer provided with the Progesterone

ELISA kit. We chose the dilution for each analyte that resulted in the largest proportion of tested samples in the detectable range.

MSD and ELISA were performed according to the protocols provided by the manufacturers. To limit batch/plate effects, we ran all samples from a given donor on the same plate, and we distributed follicular and luteal phase samples across plates.

The MSD data was analyzed using MSD Discovery Workbench software using the built-in concentration interpolation (typically four-parameter polynomial curve) and the concentrations were exported. For ELISA, concentrations were determined using a four-parameter polynomial curve. We analyzed the data from the exploratory and validation components of the study using the same two-stage process as for the studies collected from the literature, as described above. As for all other studies, the primary analysis was unadjusted, and in sensitivity analysis, we adjusted for covariates including hemoglobin, recent sexual contact, STI, and BV status.

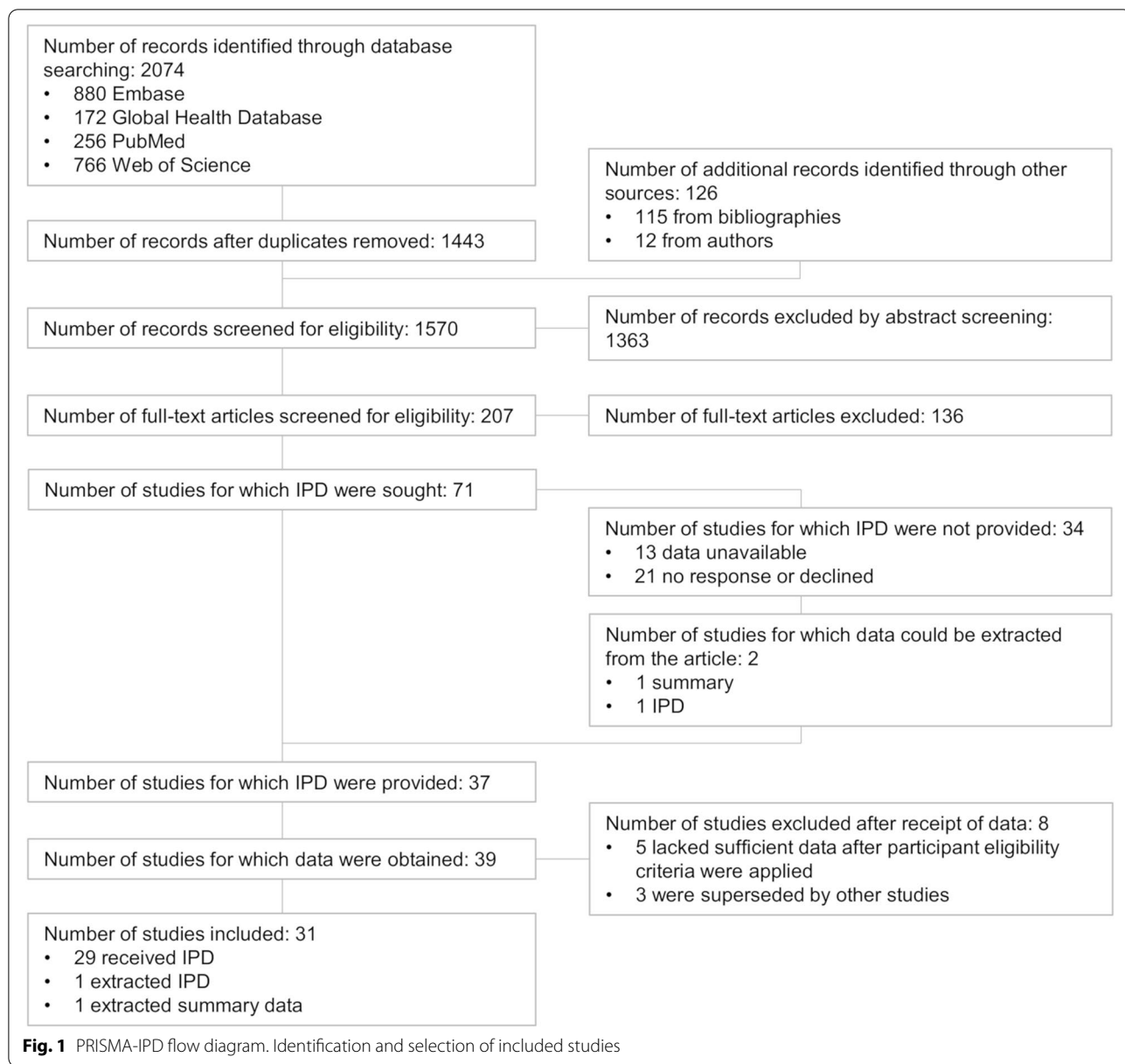
## **Results**

### **Protocol amendments**

Several small changes and corrections to the protocol became necessary during the course of the study. These amendments are described in Additional file 2.

### **Systematic review**

As shown in Fig. 1, we searched Embase (880 records), the Global Health Database (172 records), PubMed (256 records), and Web of Science (766 records) on April 22, 2020, and August 30, 2021, using the search strings described in Additional file 1. We did not need to update our search strategy. In total, 2074 records were retrieved. After de-duplication and removal of reviews and editorials, 1443 records remained. We identified an additional 126 records from review of bibliographies and author suggestions. In total, we reviewed 1570 abstracts. We excluded 1363 records after review of abstracts and 136 after review of full-text articles. We sought individual participant data (IPD) from 71 studies and received it from 37. We extracted data from publications of 2 additional studies where IPD was unavailable. Of these 39 studies, we removed 8 because of a lack of sufficient data remaining after participant-level eligibility criteria were applied ( $\leq 1$  sample remaining per phase) or because the dataset overlapped with another included study. In total, data were available from 31 studies, of which 29 were IPD provided by the authors [10–15, 19, 21, 23, 26, 27, 48–62], 1 was IPD extracted from a paper [63], and 1 was summary data extracted from a paper [31]. Three of these data sets were previously unpublished. Including our validation



and exploratory experiments described below as an additional study, we used data from 32 studies.

Table 2 shows the characteristics of the included studies. In total, the IPD consisted of 82,271 concentration measurements of 77 immune mediators from 4403 samples from 1600 participants. We excluded samples based on the pre-registered criteria described in the Methods, including use of hormonal contraception and samples collected outside of our cycle phase definitions. IPD were checked for integrity and no important issues were identified. After excluding samples, 39,589 measurements (48% of total) from 2112 samples (48%) from 871

participants (54%) were eligible for inclusion in the primary analysis.

All code and data necessary to reproduce the analyses shown in this paper are included in Additional file 3, including IPD for those studies where study investigators agreed to publish.

**Primary result**

A total of 53 of the 77 immune mediators (69%) were measured in at least two studies. The concentration ranges for these factors are shown in Fig. 2.

**Table 2** Characteristics of studies

Study	Participants	Immune factors	Sample type	Assay method	Phasing method	Luteal samples	Follicular samples	Perioviulatory samples	Countries	Data source	Risk of bias <sup>e</sup>
Arnold-2016 [48]	23	14	CVL	MSD	Days since LMP	7	16	-	Kenya	IPD	4
Barousse-2007 [49]	22	16	CVL	ELISA	Progesterone	15	16	-	USA	IPD	5
Boily-Larouche-2019 [10]	26	19	CVL	Luminex <sup>b</sup>	Progesterone	23	14	-	Kenya	IPD	4
Bradley-2018 [11]	16	10	Swab <sup>c</sup>	Luminex	Progesterone plus LH	14	22	5	Sweden	IPD	6
Byrne-2016 [12]	49	14	CVL	Luminex	Progesterone <sup>a</sup>	16	33	-	South Africa	IPD	6
Castle-2002 [13]	11	4	Sponge <sup>d</sup>	ELISA	Days since LMP	5	6	-	USA	IPD	4
Cortez-2014 [14]	14	26	Swab <sup>c</sup>	Luminex	Days since LH peak	143	136	27	Kenya	IPD	5
Fidel-2003 [50]	112	12	CVL	ELISA	Progesterone plus LH	36	58	18	USA	IPD	4
Francis-2016 [15]	42	45	CVL	Luminex	Urine PDG/CRT	206	131	-	Tanzania	IPD	5
Ghosh-2010 [51]	16	4	CVL	ELISA	Days since LMP	6	10	-	USA	IPD	5
Hughes-2021 [52]	28	15	Menstrual cup	ELISA, MSD	Progesterone	19	27	-	USA	IPD	6
Hughes-unpublished	90	20	CVL	MSD	Progesterone	65	88	-	Kenya	IPD	5
Hwang-2011 [53]	8	11	CVL	Luminex	Days since LMP	5	3	-	USA	IPD	4
Jais-2016 [19]	20	11	CVL	ELISA	Days since LMP	20	20	-	USA	IPD	5
Jais-2017 [54]	20	2	CVL	ELISA	Days since LMP	20	20	-	USA	IPD	5
Jespers-2017 [21]	37	12	CVL	Luminex, MSD, ELISA	Days since LMP	74	110	-	Rwanda, South Africa, Kenya	IPD	5
Joag-unpublished	18	16	Menstrual cup	MSD	Progesterone	12	21	-	Kenya	IPD	5
Kyongo-2012 [23]	31	12	CVL	Luminex, ELISA	Days since LMP <sup>a</sup>	59	87	-	Belgium	IPD	5
Lahey-2012 [55]	16	3	CVL	ELISA	Days since LMP	6	10	-	USA	IPD	4
Lieberman-2008 [56]	8	14	Sponge <sup>d</sup>	Luminex	Days since LMP	3	5	-	USA	IPD	5
Makinde-2018 [26]	7	38	Menstrual cup	Luminex	Days since LMP <sup>a</sup>	7	7	-	UK	IPD	4
Moscicki-2020 [57]	18	13	CVL	Luminex	Days since LMP	20	21	-	USA	IPD	5
Novak-2007 [58]	49	4	Sponge <sup>d</sup> , CVL	ELISA	Days since LMP	19	33	-	USA	IPD	5
Patel-2014 [27]	4	6	Menstrual cup	ELISA	Days since LMP <sup>a</sup>	4	8	-	USA	IPD	3
Safaeian-2009 [63]	23	2	Sponge <sup>d</sup>	ELISA	Days since LH peak <sup>a</sup>	23	23	23	Costa Rica	Extracted IPD	5

**Table 2** (continued)

Study	Participants	Immune factors	Sample type	Assay method	Phasing method	Luteal samples	Follicular samples	Periovulatory samples	Countries	Data source	Risk of bias <sup>e</sup>
Sriprasert-2020 [59]	7	2	CVL	ELISA	Progesterone	5	15	-	USA	IPD	5
Thurman-2015 [60]	13	17	CVL	MSD	Days since LMP	8	5	-	USA	IPD	4
Thurman-2017 [61]	20	14	CVL	ELISA, Luminex	Progesterone	15	22	-	USA	IPD	6
Thurman-unpublished	15	16	CVL	ELISA, Luminex	Days since LMP	11	15	-	USA	IPD	5
Yegorov-2019 [62]	9	19	Menstrual cup	ELISA, MSD	Days since end of LMP	3	6	-	Uganda	IPD	4
Shust-2010 [31]	9	16	CVL	ELISA, Luminex	Progesterone <sup>a</sup>	26	25	-	USA	Extracted summary	6
New wet lab data <sup>f</sup>	99	13	CVL	ELISA, MSD	Progesterone	80	102	-	Kenya	IPD	5

The number of samples shown includes only those that were eligible for inclusion in the primary analysis. CVL cervicovaginal lavage, LMP last menstrual period, LH luteinizing hormone, PDG Pregnanediol-3-Glucuronide, CRT creatinine, MSD Meso Scale Discovery

<sup>a</sup> Progesterone concentrations or days since LMP/LH peak were unavailable, so samples were phased based on the phases assigned by the study authors

<sup>b</sup> "Luminex" includes other bead-based immunoassays

<sup>c</sup> Both swab studies used vaginal swabs

<sup>d</sup> All sponge studies sampled the endocervix or the cervical os

<sup>e</sup> Risk of bias scale: high = 0–1, medium = 2–3, low = 4–6

<sup>f</sup> The exploratory and validation experiments performed for this article

Immunoglobulins were the most abundant immune mediators, followed by defensins, lactoferrin, SLPI, elafin, and IL-1RA.

Of these factors, 51 were detectable in at least half of all samples. As shown in Fig. 3A, a number of immune mediators were lower in the luteal phase than in the follicular phase, including chemokines (especially CC-type), immunoglobulins, IL-6, IL-16, IL-18, GNLX, G-CSE, and MMPs. In contrast, only IL-1 $\alpha$ , HBD-2, and HBD-3 were higher in luteal phase samples compared to follicular phase samples. As shown in Table 3, which also lists the full name for each factor, 18 immune mediators were different between the phases with  $p < 0.05$ , of which 12 remained  $p < 0.05$  after adjustment by FDR and 8 after adjustment by Holm-Bonferroni.

Two additional immune mediators were detectable in less than half of all samples. These immune mediators were analyzed with logistic models and are shown in Fig. 3B and Table 4.

The meta-analysis reported in this section includes all eligible data from all studies, including the validation and exploratory experiments described below.

Additional file 4 contains comprehensive overviews of each immune mediator, including raw concentration data (IPD) and detailed meta-analysis forest plots. These overviews show the difference between phases separately for each immune mediator within each study, as well as the weighting of each study in the overall meta-estimate.

The remaining 24 of the 77 immune mediators (31%) were measured in only single studies and meta-analysis could not be performed. These immune mediators and the results from the single studies are shown in Table S1.

## Risks of bias and strength of evidence

### Risk of publication bias

We assessed whether there was evidence of non-publication of results (i.e., publication bias) for all immune mediators that were measured in at least 10 studies. The risk of publication bias was assessed using Egger's tests and funnel plots, where asymmetry would be suggestive of possible publication bias (Fig. S1). There was no evidence of publication bias for any of these immune mediators.

### Risk of bias

The overall risk of bias at the study level was assessed using the instrument in Additional file 1. The risk of bias was generally low in these studies, as shown in the last column of Table 2.

### Strength of evidence

We used the GRADE framework to assess the quality of evidence for all immune mediators as described in the

methods. The GRADE ratings are listed in Tables 3 and 4 and Fig. 3. Overall, the evidence strength was high for 26 immune mediators, moderate for 12, low for 9, and very low for 6.

## Periovulatory results

Only four studies included periovulatory samples and the number of included samples was small (Table 2). Meta-analysis was possible for ten immune mediators, comparing follicular samples to periovulatory samples (Fig. S2A; Table S2) and comparing luteal samples to periovulatory samples (Fig. S2B; Table S3). The confidence intervals were quite wide in many cases, as were the  $I^2$  values, indicating substantial heterogeneity between studies and low confidence. By  $p$ -value, the strongest results were higher levels of IL4 in the follicular phase than the periovulatory phase, as well as higher levels of CXCL8 in both the luteal and follicular phases than the periovulatory phase.

## Additional wet lab experiments

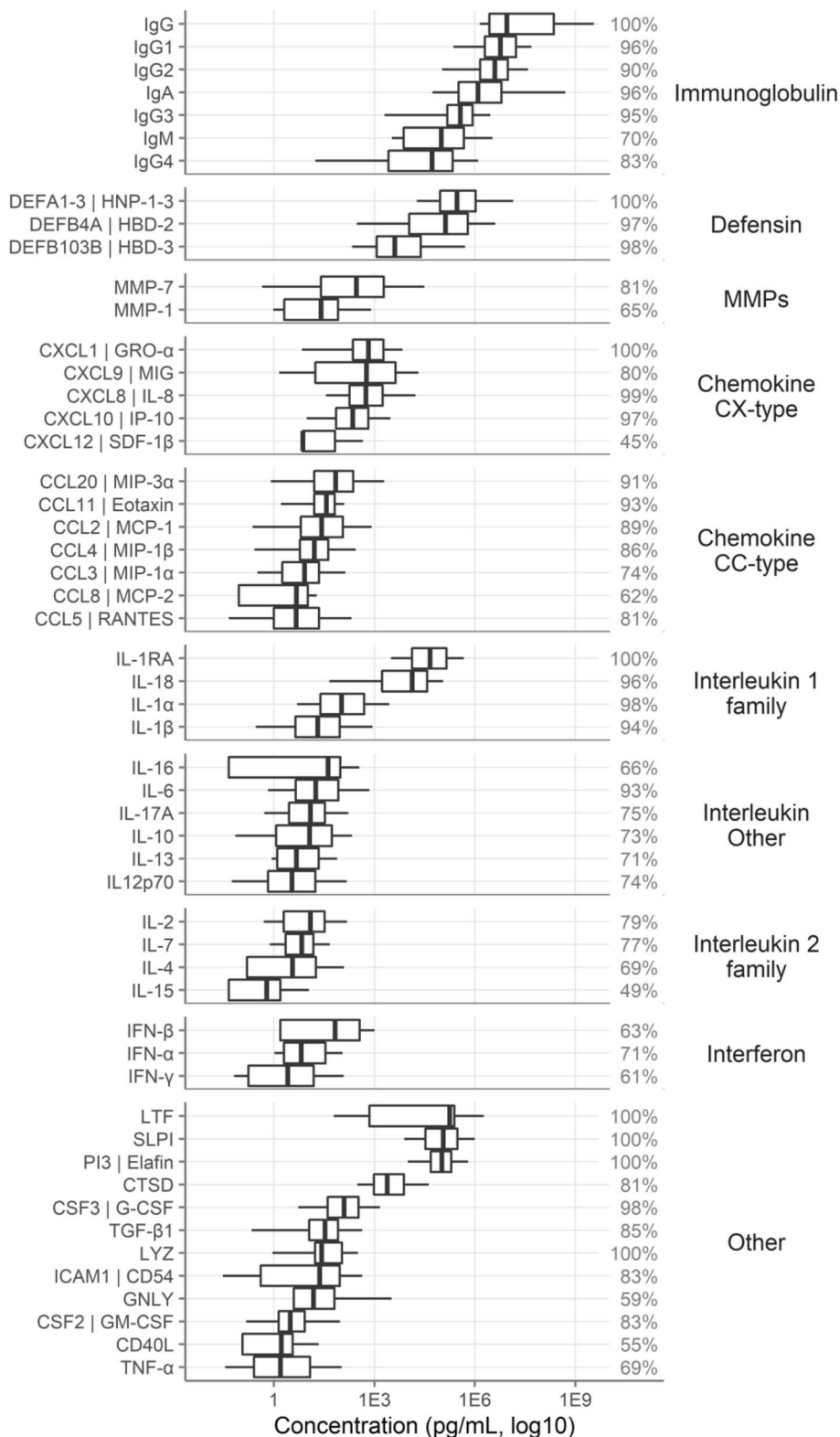
We selected our validation and exploratory immune mediators based on an interim version of the meta-analysis, which contained data from all studies that were available at the time (29 of the 32 studies included in the final version).

### Pre-registered validation experiment

Based on this interim meta-analysis, we met our pre-registered statistical power threshold of 0.9 for one immune mediator, total IgG (power = 0.96). Therefore, we only performed a validation experiment for a single immune mediator, rather than 2–3 as specified in the protocol. We predicted that IgG would be lower in the luteal phase. We measured IgG by MSD in 200 CVL samples from 100 participants from Kenya (Fig. 4A), with a final sample size of 178 CVL samples from 99 participants after excluding samples with insufficient volume or where serum progesterone levels fell outside the limits of our menstrual phase definitions. We found that IgG was 0.342 log<sub>2</sub> units lower in the luteal phase than the follicular phase, with  $p = 0.183$  (Fig. 4B), so the direction of effect was as predicted, but the  $p$ -value did not meet our specified threshold for statistical significance of 0.05.

### Non-pre-registered validation experiments

We measured two additional validation immune mediators despite not meeting the pre-registered threshold for power. We felt that the experiments had the potential to be instructive and would at minimum contribute



**Fig. 2** Concentrations of immune mediators. Concentration ranges for all immune mediators measured in at least 2 studies. The box-and-whisker plots show concentrations including all studies and sample types. The middle bar shows the median, with the edges of the box ranging from the 25th to the 75th percentiles and the whiskers ranging from the 5th to the 95th percentiles. The percentages shown at the right reflect the percent of samples detected above the lower limit of detection

additional data to the meta-analysis. We chose the two immune mediators with the highest estimated statistical power other than total IgG: CCL2 (expected to be lower luteal; Fig. 4A) and IL-1 $\alpha$  (expected to be higher luteal; Fig. 4A). We measured each by MSD and confirmed CCL2 to be lower in the luteal phase ( $-1.36$  log<sub>2</sub> units,  $p = 9.4E-7$ ) and IL-1 $\alpha$  to be higher in the luteal phase ( $0.73$  log<sub>2</sub> units,  $p = 8.0E-4$ ; Fig. 4B).

### Exploratory experiments

We used these same samples for exploratory experiments of immune mediators that were measured in few studies. We chose the following immune mediators (all measured in 1–2 studies at the time the reagents were ordered): MMP1, MMP7, CCL11, CD40L, IL-15, IL-16, and IgM (all by MSD), as well as GNLy and CTSD by ELISA. We also measured IgA, even though it did not meet our criteria for validation (power >0.9) or exploratory (measured in 1–2 studies) experiments; we included it because it was included in the multiplex IgA, IgG, and IgM MSD kit. As described in the methods, we also measured total protein concentrations by BCA assay, PSA levels by ELISA, and hemoglobin A by MSD. Measurements were available from 175 to 182 samples from 98 to 99 participants per immune mediator after excluding samples as described above or that failed QC. Concentrations of these immune mediators are shown in Fig. 4C. IL-15 was detected in fewer than 50% of samples, so it was analyzed using logistic models. All of these immune mediators were lower in the luteal phase than the follicular phase, except for CTSD (Fig. 4D). The data from this experiment is included in the main meta-analysis in Fig. 3, substantially increasing the number of samples as well as the list of immune mediators included in the final meta-analysis.

### Subgroup analysis

We next conducted univariate subgroup analyses to determine whether the effect of the menstrual cycle phase was modified by any of four key study-level covariates: sample type, assay method, geographical region, or method of determining the menstrual cycle phase. These subgroup analyses replace the planned meta-regression analysis as described in Additional file 2.

For the subgroup analyses, we performed separate meta-analyses within each subgroup for each immune mediator. For example, in analyzing the sample type covariate for CCL2, at least two studies were performed using CVL samples and at least two using menstrual cups. We performed separate meta-analyses for the CVL studies and the menstrual cup studies. We then compared those results to a meta-analysis of all of the CCL2 studies combined. We repeated this process for each immune mediator and for each of the four study-level covariates.

Figure 5 shows the subgroup analysis for sample type. In general, the directions of the effects are the same regardless of sample type. For example, CCL2 is lower in the luteal phase than the follicular phase whether measured in CVL samples or in menstrual cup samples. However, there is a general pattern of a greater effect in menstrual cup samples than in CVL samples. For example, CC-type chemokines were all lower in the luteal phase than the follicular phase, but this difference is more pronounced in menstrual cup samples than in CVL samples. A similar effect is seen for cervical sponge samples, but not for vaginal swabs, though the numbers of studies using sponges or swabs were low. This pattern held for most immune mediators, but not all (e.g., IL-4, IL-2).

The subgroup analyses of the assay method (Fig. S3A), geographical region of sample origin (Fig. S3B), and menstrual cycle phasing method (Fig. S3C) did not identify any consistent patterns of these variables modifying the effect of the menstrual cycle phase.

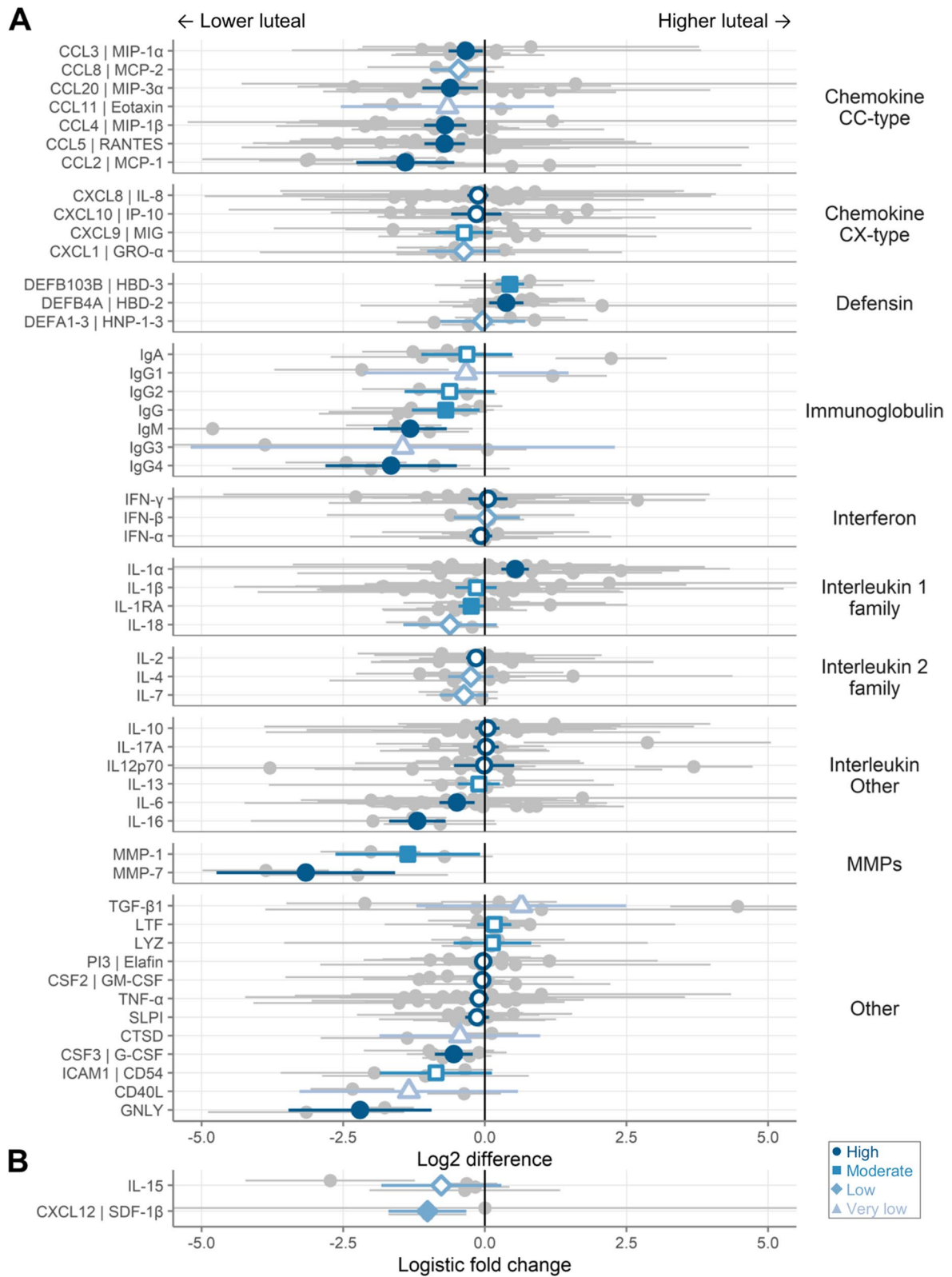
### Sensitivity analyses

#### One-stage meta-analysis

As a pre-specified sensitivity analysis, we performed a one-stage meta-analysis. Specifically, we pooled the raw data from all studies and assessed the effect of the menstrual phase in a single model per immune mediator, with participant and study as random effects. This approach differs from our primary analysis reported above, where we used a two-stage approach, first analyzing each study separately and then combining the results by meta-analysis. The results of this one-stage meta-analysis confirmed the results of our primary analysis (Fig. 6A, Pearson correlation coefficient  $r = 0.93$  for correlation of effect sizes between one- and two-stage analyses).

(See figure on next page.)

**Fig. 3** Primary meta-analyses. **A** The log<sub>2</sub> difference between phases (log<sub>2</sub>-pg/mL of the luteal phase minus log<sub>2</sub>-pg/mL of the follicular phase). **B** The logistic difference between phases (log-odds of proportion detectable in luteal vs. follicular phase). Each row represents a different immune mediator, with the symbols showing the mean and the lines showing the 95% confidence intervals. Gray symbols indicate individual studies and blue the meta-estimates as determined by inverse-variance pooling random effects models. Filled symbols indicate  $p < 0.05$  while open symbols indicate  $p > 0.05$ . Positive numbers indicate higher during the luteal phase (relative to the follicular phase), while negative numbers indicate lower during the luteal phase (relative to the follicular phase). Symbol shape and shade of blue indicate the GRADE strength of evidence



**Fig. 3** (See legend on previous page.)



**Table 3** Summary of primary meta-analyses (linear models)

Category	Immune mediator	Name	Log2 difference	Standard error	P-value	FDR	Holm-Bonferroni	$\hat{r}$	Number of studies	GRADE
Chemokine CC-type	CCL3   MIP-1α CCL8   MCP-2 CCL20   MIP-3α CCL11   Eotaxin CCL4   MIP-1β CCL5   RANTES CCL2   MCP-1	C-C motif chemokine ligand 3	- 0.34	0.15	0.027	0.086	0.968	53	10	High
		C-C motif chemokine ligand 8	- 0.47	0.26	0.069	0.184	1	0	2	Low
		C-C motif chemokine ligand 20	- 0.61	0.25	0.014	0.055	0.553	41	13	High
		C-C motif chemokine ligand 11	- 0.66	0.96	0.492	0.66	1	98	2	Very low
		C-C motif chemokine ligand 4	- 0.7	0.19	2.3E-4	0.002	0.01	73	14	High
		C-C motif chemokine ligand 5	- 0.71	0.18	9.7E-5	9.9E-4	0.005	23	15	High
		C-C motif chemokine ligand 2	- 1.4	0.44	0.001	0.007	0.06	81	8	High
		C-X-C motif chemokine ligand 8	- 0.12	0.09	0.193	0.365	1	10	24	High
		C-X-C motif chemokine ligand 10	- 0.15	0.23	0.514	0.66	1	65	13	High
		C-X-C motif chemokine ligand 9	- 0.37	0.26	0.152	0.31	1	47	8	Moderate
Defensin	DEFB103B   HBD-3 DEFB4A   HBD-2 DEFA1-3   HNP-1-3	C-X-C motif chemokine ligand 1	- 0.37	0.33	0.259	0.426	1	0	4	Low
		defensin beta 103B	0.44	0.13	6.5E-4	0.004	0.028	0	4	Moderate
		defensin beta 4A	0.38	0.16	0.015	0.055	0.571	2	8	High
		Human neutrophil peptides 1-3	- 0.04	0.38	0.921	0.94	1	73	4	Low
Immunoglobulin	IgA IgG1 IgG2 IgG IgM IgG3 IgG4	Immunoglobulin A	- 0.32	0.41	0.438	0.653	1	82	7	Moderate
		Immunoglobulin G1	- 0.33	0.92	0.718	0.799	1	86	3	Very low
		Immunoglobulin G2	- 0.62	0.41	0.124	0.276	1	53	2	Moderate
		Immunoglobulin G	- 0.69	0.3	0.023	0.079	0.862	58	5	Moderate
		Immunoglobulin M	- 1.32	0.33	6.3E-5	9.9E-4	0.003	44	3	High
		Immunoglobulin G3	- 1.45	1.91	0.448	0.653	1	75	2	Very low
		Immunoglobulin G4	- 1.65	0.59	0.005	0.022	0.206	68	3	High
		Interferon gamma	0.05	0.18	0.758	0.823	1	51	16	High
		Interferon beta 1	0.04	0.3	0.904	0.94	1	0	2	Low
		Interferon alpha 2	- 0.07	0.1	0.49	0.66	1	0	6	High
Interleukin 1 family	IL-1α IL-1β IL-1RA	Interleukin 1 alpha	0.54	0.12	1.4E-5	3.6E-4	7.0E-4	51	20	High
		Interleukin 1 beta	- 0.15	0.19	0.409	0.632	1	40	20	Moderate
		Interleukin 1 receptor antagonist	- 0.24	0.11	0.034	0.101	1	39	10	Moderate
		Interleukin 18	- 0.61	0.42	0.146	0.31	1	76	2	Low
Interleukin 2 family	IL-2 IL-4 IL-7	Interleukin 2	- 0.16	0.09	0.08	0.205	1	0	11	High
		Interleukin 4	- 0.25	0.21	0.227	0.4	1	76	8	Low
		Interleukin 7	- 0.37	0.22	0.092	0.213	1	73	3	Low

**Table 3** (continued)

Category	Immune mediator	Name	Log2 difference	Standard error	P-value	FDR	Holm-Bonferroni	$I^2$	Number of studies	GRADE
Interleukin	Other	Interleukin 10	0.05	0.11	0.681	0.799	1	15	18	High
		Interleukin 17A	0.02	0.11	0.857	0.911	1	39	8	High
		Interleukin 12 p70	-0.01	0.27	0.959	0.959	1	78	16	High
MIMPs		Interleukin 13	-0.11	0.19	0.573	0.695	1	0	4	Moderate
		Interleukin 6	-0.49	0.16	0.002	0.009	0.083	60	21	High
Other		Interleukin 16	-1.19	0.25	2.9E-6	1.5E-4	1.5E-4	0	3	High
		Matrix metalloproteinase 1	-1.36	0.65	0.037	0.104	1	77	2	Moderate
		Matrix metalloproteinase 7	-3.16	0.8	8.6E-5	9.9E-4	0.004	63	2	High
Other		Transforming growth factor beta 1	0.64	0.94	0.495	0.66	1	91	6	Very low
		Lactotransferrin	0.17	0.15	0.28	0.447	1	0	5	Moderate
		Lysozyme	0.13	0.35	0.703	0.799	1	0	3	Moderate
		Peptidase inhibitor 3	-0.03	0.08	0.72	0.799	1	25	10	High
		Colony-stimulating factor 2	-0.05	0.07	0.517	0.66	1	27	8	High
		Tumor necrosis factor	-0.1	0.09	0.248	0.421	1	23	19	High
		Secretory leukocyte peptidase inhibitor	-0.14	0.11	0.208	0.38	1	11	10	High
		Cathepsin D	-0.44	0.72	0.542	0.674	1	70	2	Very low
		Colony-stimulating factor 3	-0.55	0.17	0.001	0.007	0.06	55	5	High
		Intercellular adhesion molecule 1	-0.86	0.51	0.087	0.211	1	46	3	Moderate
		CD40 ligand	-1.34	0.98	0.172	0.338	1	93	2	Very low
		Granulysin	-2.2	0.64	6.2E-4	0.004	0.028	56	2	High

Log2 difference, difference between phases (log2-pg/mL of the luteal phase minus log2-pg/mL of the follicular phase) with positive numbers indicating higher concentrations in the luteal phase (relative to the follicular phase), while negative numbers indicate lower concentrations in the luteal phase (relative to the follicular phase); FDR false discovery rate;  $I^2$  statistical heterogeneity between studies; from low (0) to high (100), GRADE Grading of Recommendations, Assessment, Development and Evaluations strength of evidence framework (very low, low, moderate, high)

**Table 4** Summary of primary meta-analyses (logistic models)

Category	Immune mediator	Name	Log <sub>2</sub> difference	Standard error	P-value	FDR	Holm-Bonferroni	I <sup>2</sup>	Number of studies	GRADE
Chemokine CX-type	CXCL12   SDF-1β	C-X-C motif chemokine ligand 12	- 1.01	0.35	0.004	0.008	0.008	0	2	Low
Interleukin 2 family	IL-15	interleukin 15	- 0.77	0.54	0.155	0.155	0.155	70	4	Low

Logistic fold change, difference between phases (log-odds of proportion detectable in luteal vs. follicular phase) with positive numbers indicating higher concentrations in the luteal phase (relative to the follicular phase) and negative numbers indicating lower concentrations in the luteal phase (relative to the follicular phase); FDR False discovery rate; I<sup>2</sup> statistical heterogeneity between studies, from low (0) to high (100); GRADE Grading of Recommendations, Assessment, Development and Evaluations strength of evidence framework (very low, low, moderate, high)

### Accounting for possible underlying confounding variables with multivariate study-level models

Because different covariates were measured in each study, our primary analysis did not adjust for covariates. To test whether the observed differences in immune mediator concentrations between phases were affected by covariates, we re-analyzed each study, adjusting for all relevant covariates for each study. The exact covariates adjusted for in each study are listed in Table S4. The most common covariates were bacterial vaginosis and detection of red blood cells (RBCs). Several studies were omitted, either because no covariates were reported or because there were too few samples to perform multivariate analysis. In addition, many samples had to be omitted due to missing covariate information. Because some samples had to be omitted in the multivariate analysis, we repeated our univariate meta-analysis on just the samples that could be included in the multivariate analysis, to allow for direct comparison. Thus, the univariate meta-analysis reported in this section differs slightly from the primary analysis, due to the smaller sample size used here. The meta-estimates of effect size were highly correlated between the univariate and multivariate analyses (Fig. 6B; Pearson  $r = 0.82$ ), confirming our primary results. However, the covariates measured in each study were highly variable and the sample size per study was often limited.

We noticed that one covariate in particular was associated with cycle phase: presence of RBCs or hemoglobin in the samples (Fig. 6C). Therefore, we assessed this covariate further in an exploratory analysis that was not preplanned. Six studies used methods that could detect microscopic levels of blood (hemastix, hemoglobin A MSD assay, or RBC counts), and three used visual inspection. Microscopic levels of RBCs were detected in more than half of the samples. In contrast, visual inspection classified few samples as containing blood. Across all methods, there was a consistent pattern of greater RBC detection in follicular phase samples.

### Exploration of variation in effects

Ten immune mediators had high levels of heterogeneity ( $I^2$  statistic > 75%; Table 3). For six of these immune mediators, we were able to attribute most of the heterogeneity to one of three factors: inconsistent levels of detectability between studies, variation between

sample types, and single study outliers. We were unable to explain the high levels of statistical heterogeneity for the remaining four immune mediators (CCL11, IL-4, IL-18, and IgG1).

The statistical heterogeneity for CD40L and MMP1 was primarily due to differences in detection between studies. Both immune mediators were only measured in two studies and there were considerable differences in the proportion of samples where the immune mediator was detected between studies (CD40L: 27% vs 64%; MMP1 49% vs 70%). In both cases, replacing the linear models with logistic models substantially reduces the heterogeneity ( $I^2$  to 55% for CD40L and 37% for MMP1) and results in statistically significant ( $p < 0.05$ ) decreases in the luteal phase for both factors.

The statistical heterogeneity for CCL2 was primarily due to variations in effect by sample type. As previously discussed (Fig. 5), we observed differences in effect between sample types, with larger effects seen in menstrual cup samples. That difference drives the heterogeneity for CCL2, where the heterogeneity within each sample type is low to moderate ( $I^2$  0–54%) and the high overall heterogeneity is caused by differences across sample types.

The statistical heterogeneity for IgA, IL-12, and TGF- $\beta$ 1 was primarily caused by single studies that differed substantially from the other studies (shown in Additional file 4). For IgA, omitting a single small study (less than 10 samples) reduces the heterogeneity to 0 and results in a statistically significant decrease of IgA in the luteal phase of  $-0.56$  log<sub>2</sub> units ( $p < 0.05$ ). For IL-12 and TGF- $\beta$ 1, dropping a single outlier study reduces  $I^2$  to 22% and 71%, respectively. Variation from sample type may additionally be contributing to residual statistical heterogeneity for TGF- $\beta$ 1, but the number of studies in each group is too small to draw confident conclusions.

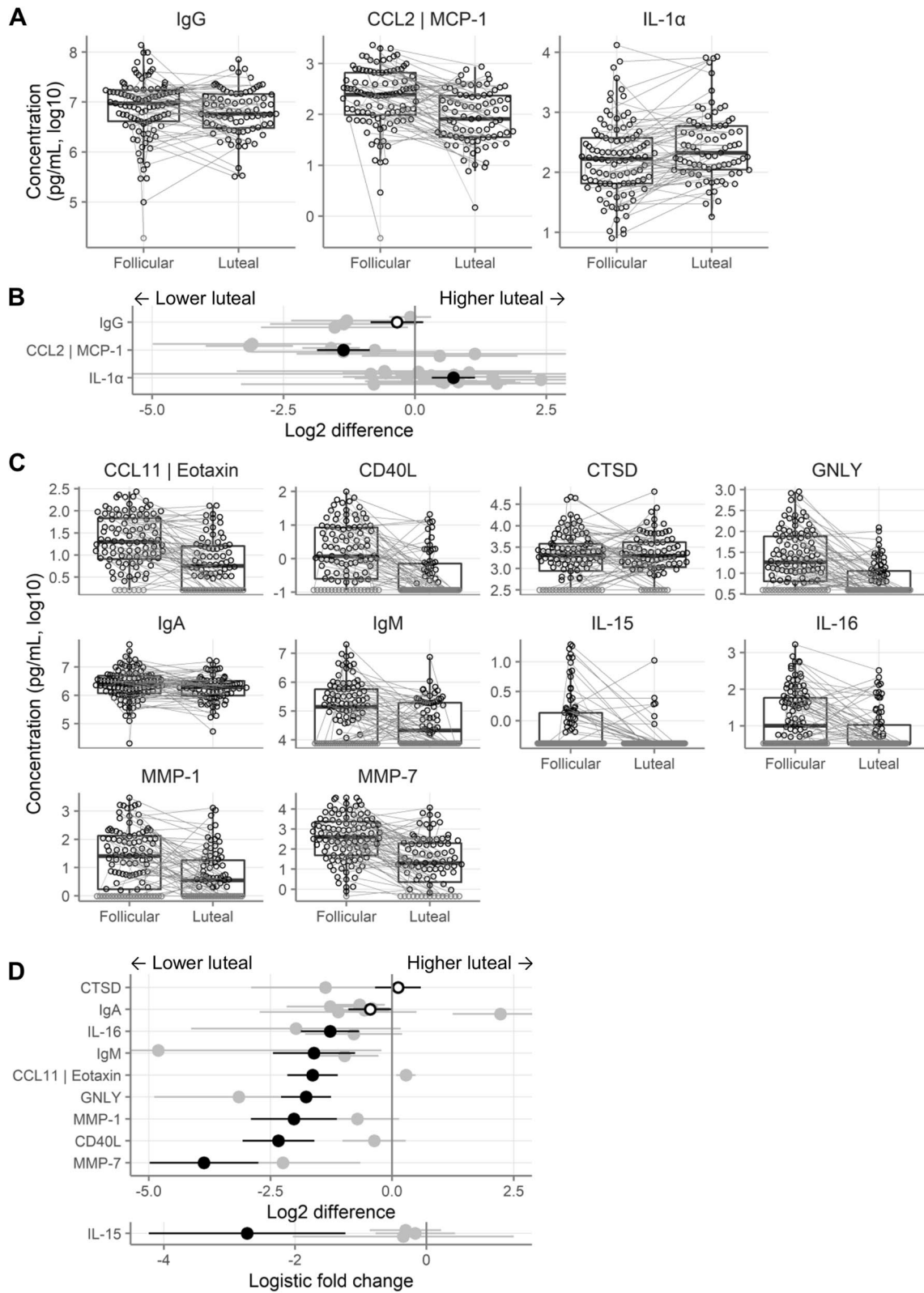
### Secondary outcomes

#### Sample type

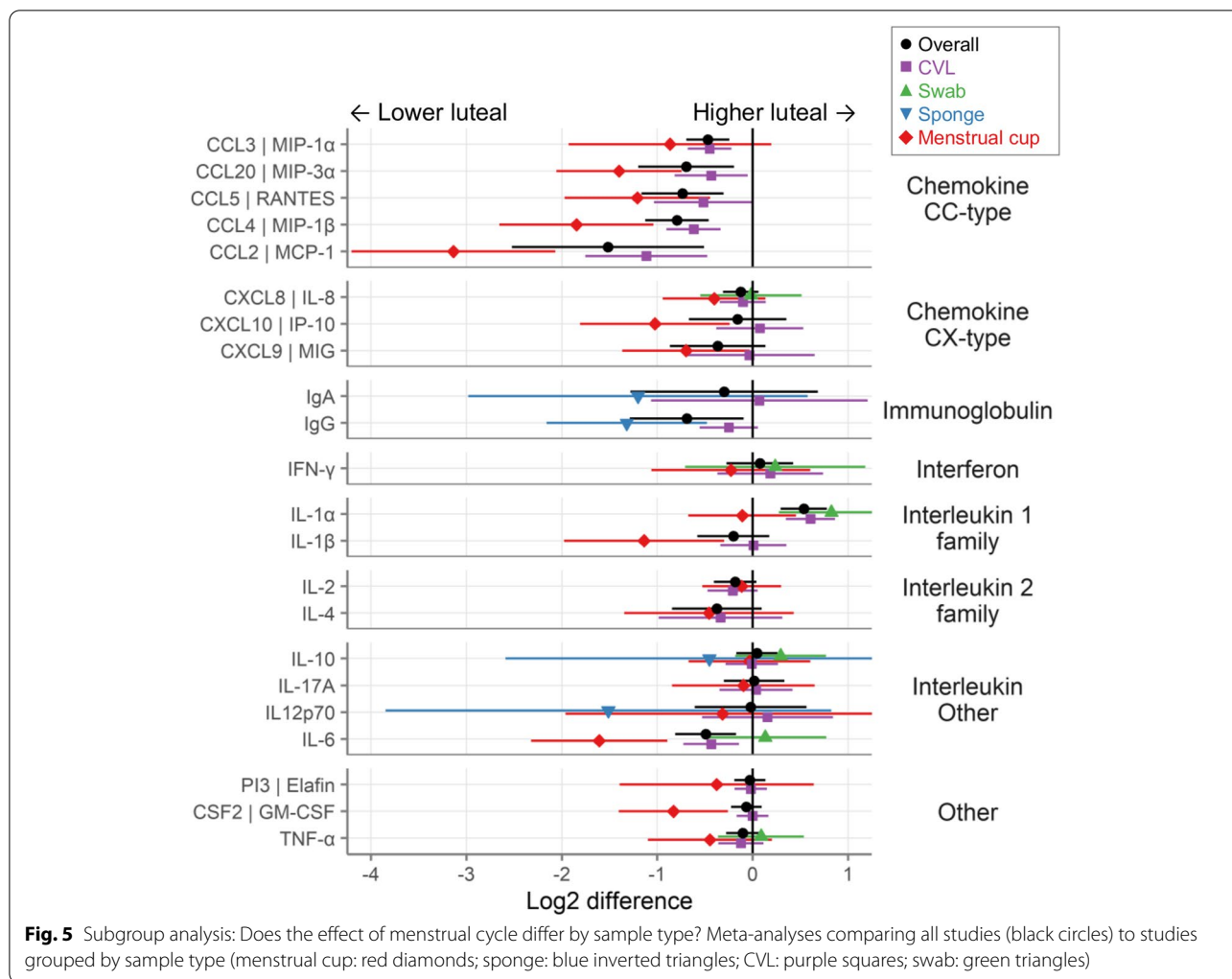
As a secondary outcome, we wished to determine whether one type of sample yielded higher concentrations and detection rates for immune mediators (regardless of menstrual phase). Thus, we compared the immune mediator concentrations detected by menstrual cup, sponge, and swab to CVL (which was by far the most

(See figure on next page.)

**Fig. 4** Validation and exploratory experiments. **A** Concentrations of validation cytokines. Each symbol shows the concentration in a single sample. Lines connect samples from the same participant. Pale grey symbols are below the lower limit of detection. **B** Differences in concentrations between phases of the menstrual cycle for the validation cytokines. Black shows the new data generated in this study, gray shows all other studies. Error bars for several CCL2 and IL-1 $\alpha$  studies extend off-scale. Black-filled symbols indicate  $p < 0.05$ , open symbols indicate  $p > 0.05$ . **C** Concentrations of exploratory cytokines, as in **A**. **D** Differences in concentrations between phases of the menstrual cycle for the exploratory cytokines, as in **B**. Error bars for several IgA and IgM studies extend off-scale



**Fig. 4** (See legend on previous page.)



common sample type). For this analysis, we included all immune mediators that were measured in at least two sample types and where each sample type was used in at least two studies.

As shown in Fig. 7A, menstrual cup, sponge, and swab consistently resulted in higher total concentrations than CVL, as expected. For all three sample types, the concentrations were higher than CVL for every immune mediator ( $p < 0.05$  for 12/20 immune mediators by menstrual cup, 4/4 by sponge, and 0/6 by swab). The study-level concentrations are illustrated for one representative immune mediator (CXCL8, selected because it

was the immune mediator measured in the most studies) in Fig. 7B.

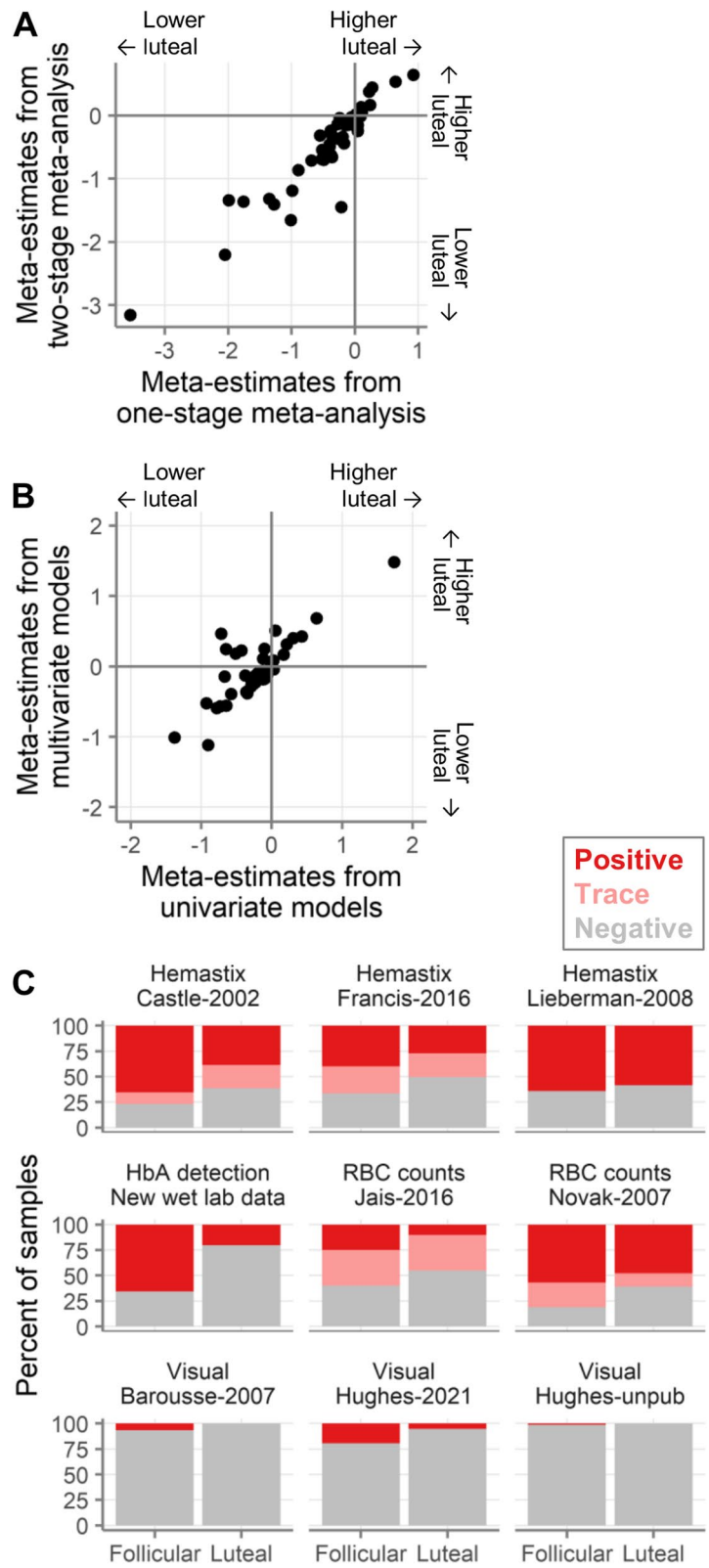
**Variation in CVL methods**

All studies used clinician-collected CVLs. The CVL medium was saline in 19 studies, phosphate-buffered saline in 2 studies, and unspecified in another study. Thus, we did not have sufficient variation in methods to assess the effect of clinician- vs. self-collection or of lavage medium.

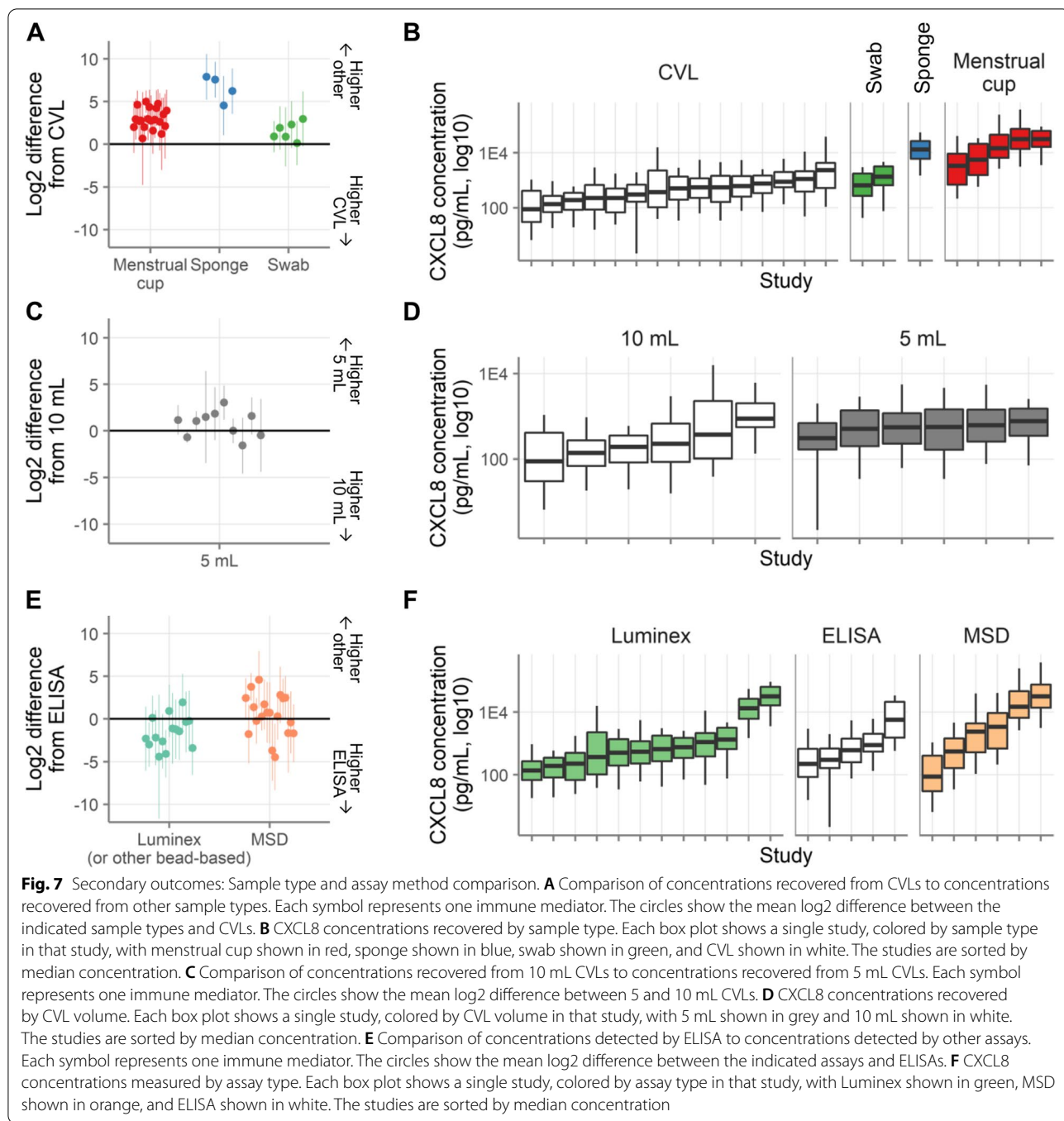
There was more variation in volume of CVL collected: 10 studies used 10 mL, 8 studies used 5 mL, 2 studies

(See figure on next page.)

**Fig. 6** Sensitivity analyses. **A** Correlation of effect sizes ( $\log_2$ -pg/mL of the luteal phase minus  $\log_2$ -pg/mL of the follicular phase) of meta-estimates derived from one- and two-stage meta-analysis. Each symbol indicates an immune mediator. **B** Correlation of effect sizes ( $\log_2$ -pg/mL of the luteal phase minus  $\log_2$ -pg/mL of the follicular phase) of meta-estimates derived from underlying univariate models or multivariate models adjusted for relevant covariates. Each symbol indicates an immune mediator. **C** Percentage of samples with red blood cells detected using the indicated detection methods. Dark red indicates positive, light red indicates trace detection, and grey indicates negative



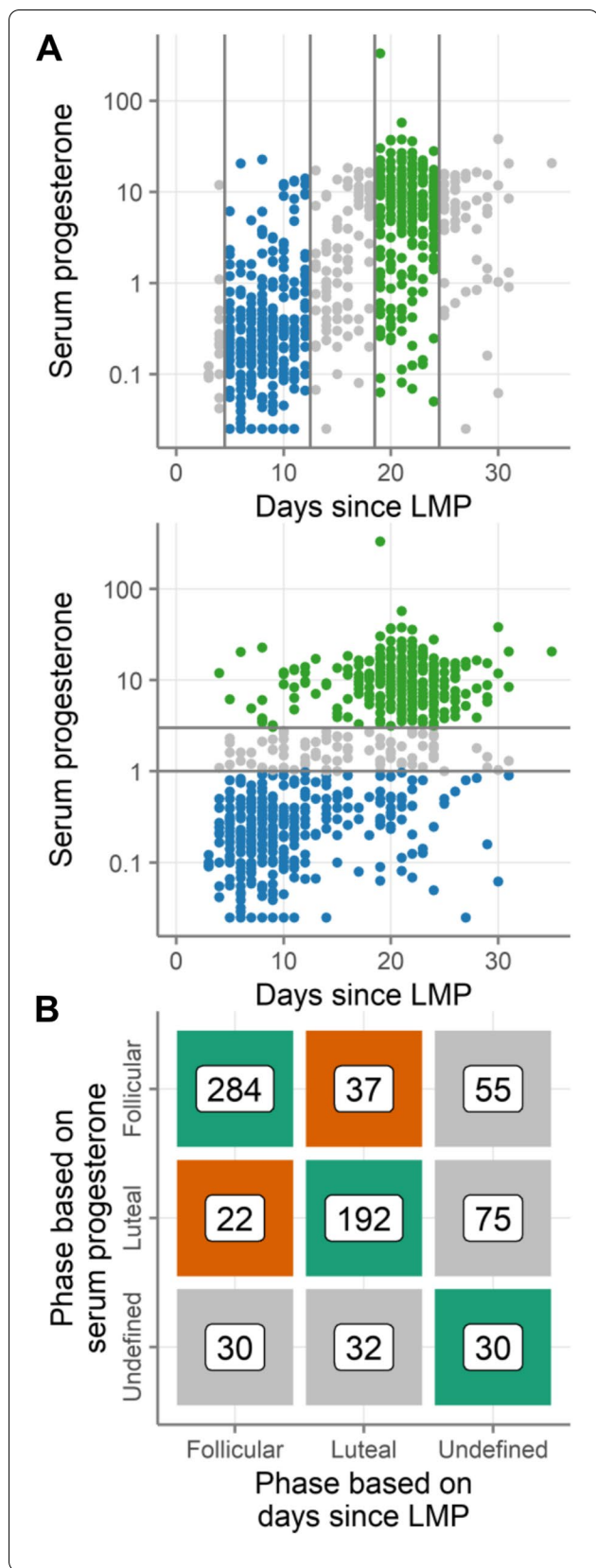
**Fig. 6** (See legend on previous page.)



used 4 mL, 1 study used 2 mL, and 1 study did not specify. We were therefore able to compare concentrations of immune mediators recovered from 5 and 10 mL lavages (including all immune mediators that were measured in at least two studies at each volume). As shown in Fig. 7C, there was not a consistent difference between the concentrations of immune mediators detected in 5

and 10 mL CVLs (concentrations higher in 5 mL CVLs for 6/10 immune mediators, with  $p < 0.05$  for 1 of these; concentrations higher in 10 mL CVLs for the other 4 immune mediators with all  $p > 0.05$ ). This is illustrated at the level of individual studies in Fig. 7D, where the concentrations of CXCL8 detected in each study are shown stratified by CVL volume.





**Fig. 8** Secondary outcomes: Method of determining menstrual phase. **A** Progesterone concentrations (log10 ng/mL) and days since last menstrual period. Each symbol is a single sample. Samples are categorized into follicular (blue) or luteal (green) phases based on days since LMP (top) or serum progesterone (bottom). The same samples are shown in both plots. Gray symbols have undefined phase. **B** The number of samples categorized as follicular phase, luteal phase, or undefined by serum progesterone and by days since LMP. Squares are colored based on whether the methods categorized those samples as the same phase (green), opposite phases (orange), or one method was undefined (gray)

**Assay method**

As an additional secondary outcome, we sought to determine whether one assay method yielded higher concentrations than the others. We compared the immune mediator concentrations detected by Luminex and MSD to ELISA (regardless of menstrual phase). For this analysis, we included all immune mediators that were measured using at least two assay methods, with each assay method being used in at least two studies.

As shown in Fig. 7E, Luminex gave lower total concentrations than ELISA for 12/15 immune mediators ( $p < 0.05$  for 3) and higher concentrations for 3/15 immune mediators (all  $p > 0.05$ ). MSD was mixed, with lower concentrations for 7/19 immune mediators ( $p < 0.05$  for 1) and higher concentrations for 12 ( $p < 0.05$  for 2 of these). This is illustrated at the level of individual studies in Fig. 7E, using CXCL8 as a representative example. As discussed in the Subgroup Analysis section above, the effect of menstrual cycle did not differ by assay method.

**Method of determining menstrual phase**

We next compared different methods of determining the menstrual cycle phase. Nine studies reported both days since the last menstrual period and serum progesterone levels. We used these studies to compare these two methods directly. Figure 8A shows all of the samples from those studies with their phases assigned by days since LMP (top) or by serum progesterone levels (bottom). Figure 8B shows that samples were rarely classified as opposite phases by the two methods: of the 535 samples that were assigned a phase (i.e., not undefined) by both methods, only 59 samples (11%) were assigned discordant phases. However, days since LMP lost many more samples to the undefined category. The two methods both designated 30 samples as undefined; an additional 130 were undefined by days since LMP, compared to only 62 by serum progesterone.

Menstrual phasing method did not have a consistent effect on the standard errors of the menstrual cycle effect sizes of individual immune factors across studies (Fig. S4A, difference between methods = 0.002,  $p$

= 0.87 by mixed model with study and immune factor as random effects, taken across all studies and immune factors). Within studies, the effect was consistent and dependent on sample size. In most studies, there were fewer undefined samples by serum progesterone than by days since LMP (for example, the studies Bradley, Cortez, and Hughes-unpublished). These studies tended to have lower standard errors in the analysis with phase determined by serum progesterone, consistent with the larger sample sizes in that analysis. Only one study had fewer undefined samples by days since LMP than by progesterone (Boily-Larouche). That study had lower standard errors in the analysis with phase determined by days since LMP. In addition, the effect sizes correlated well between the analyses performed with both phasing methods with Pearson  $r$  between 0.5 and 0.97 for all studies (not shown).

#### **Normalization to total protein**

We next wished to determine whether immune mediator concentrations should be normalized to the total concentration of protein in the samples. Normalization to total protein did not have a consistent effect on the standard errors of the menstrual cycle effect sizes (Fig. S4B, difference between normalized and non-normalized = 0.011,  $p = 0.67$ , mixed model with study and immune factor as random effects, taken across all studies and immune factors). In most studies, the standard errors were very similar whether the analysis was performed on raw or normalized concentrations. In addition, the effect sizes were very strongly correlated between normalized and raw concentrations with Pearson  $r > 0.9$  for all studies (not shown).

## **Discussion**

### **Summary**

Our systematic review and meta-analyses of cervicovaginal immune mediators demonstrate clear and consistent changes across the menstrual cycle, the most striking being a widespread decrease in immune mediator concentrations in the luteal phase compared to the follicular phase. Chemokines, antibodies, MMPs, and several interleukins all decreased in the luteal phase, while only IL-1 $\alpha$  and beta-defensins increased in the luteal phase. These cyclical differences may have consequences for immunity, susceptibility to infection, and fertility. We additionally identified immune mediators with stable levels across the cycle, and some requiring further research. Our study emphasizes the need to take the effect of the menstrual cycle into account in future studies and lays a foundation for future research to elucidate the biological basis for and consequences of these changes.

### **Primary outcomes**

We had high to moderate confidence that CC-type chemokines, antibodies, MMPs, IL-6, IL-16, IL-1RA, G-CSF, GNLX, and ICAM1 were lower in the luteal phase compared to the follicular phase. In contrast, there was high or moderate evidence of higher levels in the luteal phase for only three immune mediators: IL-1 $\alpha$ , HBD-2, and HBD-3. There were also a large number of immune mediators where we have high to moderate confidence that levels change minimally between the phases: CXCL8, 9, and 10, interferons, TNF, SLPI, elafin, lysozyme, lactoferrin, and interleukins 1 $\beta$ , 2, 10, 12, 13, and 17A. In addition, we identified a number of immune mediators where additional research needs to be done due to low strength of evidence (Tables 3 and 4) or where the immune mediators were measured in only single studies (Table S1).

We conducted validation experiments for IgG, IL-1 $\alpha$ , and CCL2. The directions of change were as predicted for all three and the differences were statistically significant for IL-1 $\alpha$  and CCL2.

Our pre-specified sensitivity analyses supported the main outcomes of the primary analysis, adding confidence to our conclusions. In particular, there was little change in our results after adjusting for covariates, including BV and STIs. IPD were available for more than half of the studies we identified as potentially eligible. Access to IPD was a major benefit, because it allowed the analysis of all data in a uniform manner and enabled the inclusion of many studies where the published reports alone did not include sufficient information for meta-analysis.

### **Biological significance of major differences between phases**

CC-type chemokines were consistently reduced in the luteal phase, particularly those that bind to chemokine receptors 1, 2, 3, 5, and 6. These chemokines play roles in monocyte/macrophage and NK cell migration as well as Th2 and Th17 responses [64], suggesting recruitment of these cell types during the follicular phase. In addition, spermatozoa express chemokine receptors, such as CCR5 [65] and CCR6 [66], so chemokine expression in the CVT could be involved in regulation of sperm migration.

We observed a consistent pattern of immunoglobulins being reduced in the luteal phase, which is consistent with earlier studies [67, 68]. While it is clear that IgA can be produced locally in the CVT [69] and that systemic vaccination can induce antibody responses in the CVT [70–72], the antigens to which the majority of these antibodies react is unknown. The question of antibody specificity is of particular interest given the abundance

of immunoglobulins in the CVT, the concentrations of which are orders of magnitude higher than most other immune mediators (Fig. 2).

The matrix metalloproteinases 1 and 7 were highly reduced in the luteal phase. These proteases degrade the extracellular matrix. In the uterus, they are important for remodeling of the endometrium during the cycle, in particular with breakdown of the lining during menses, and are tightly regulated by progesterone and cytokines [73]. Their role in the vaginal cavity is unclear, but their cyclical changes in expression in the vagina appear to match that seen in the endometrium [73].

The beta-defensins HBD-2 and HBD-3 were higher in the luteal phase, and among the most abundantly expressed immune mediators, suggesting a prominent role. These proteins are made by epithelial cells and disrupt microbial membranes. The mechanism for their induction during the luteal phase is unclear, as conflicting results have been observed with *in vitro* hormonal treatment of vaginal epithelial cells; presence of LPS could be involved [74, 75]. Increased levels of these antimicrobial effectors during the luteal phase may partially compensate for reduced levels of other immune mediators during that phase.

The other prominent increase in the luteal phase was of IL-1 $\alpha$ . The IL-1 family as a whole underwent complex changes throughout the cycle: increase of IL-1 $\alpha$  in the luteal phase combined with decrease of its antagonist IL-1RA suggests strong increases of IL-1 $\alpha$  signaling in the luteal phase relative to the follicular phase. However, the decrease in IL-1RA is very small, with unclear biological significance. In addition, IL-1 $\beta$  had little to no change between the phases. The reason for this disconnect between IL-1 $\alpha$  and IL-1 $\beta$  expression is unclear; perhaps it is related to IL-1 $\alpha$ 's role in regulating MMP expression [73]. Notably, IL-1RA is the interleukin with the highest level of expression, dramatically higher than all other interleukins except IL-18.

A limitation of our study is the binary comparison between two narrowly defined phases of the menstrual cycle. While this approach was necessary for the study design, it obscures the fact that the cycle is a continuum made up of multiple different and overlapping biological processes, rather than two discrete phases.

#### Subgroup analyses: sample type

We observed that sample type significantly modified the effect of the menstrual cycle: cyclical differences were much greater in menstrual cups and cervical sponges than in CVL and vaginal swabs. This result suggests that there are differences in the fluid collected by each sample type. These differences may include anatomical origin of the fluid (suggesting that the menstrual cycle has stronger

effects in some areas of the CVT), effects of sample dilution, or differential presence of contaminating or interfering factors by sample type. Whatever the underlying explanation, this finding emphasizes the importance of sample type in understanding cyclical differences in CVT immune mediators.

#### Detection of red blood cells/hemoglobin

The presence of red blood cells (RBCs) or hemoglobin was measured in nine studies. At a macroscopic level, blood was rare, with visual detection in only a few samples. However, microscopic levels were very common, present in over half of the samples, with a consistent pattern of higher levels during the follicular phase. Even in luteal phase samples, obtained long after the end of menstruation, over half of the samples were positive. Given this result, while it may make sense to exclude visibly bloody samples (if menstrual blood is not the subject of investigation), microscopic levels of blood may need to be regarded as a physiological characteristic of CVT fluid. Indeed, given the more frequent detection of RBCs during the follicular phase, the process underlying the presence of these cells may be part of the causal pathway of differences between phases and is therefore worthy of further study. Because blood was assessed in only a subset of the studies included here, it may be an undetected source of variability in the other studies, which should be assessed in future research.

#### Secondary outcomes: detection levels and immune mediator concentrations

CVLs consistently yielded about five times lower immune mediator concentrations than menstrual cups, swabs, or sponges. This finding is expected, given the large volume of media used in the collection of a CVL, and confirms previous findings [20, 76, 77]. However, we saw no consistent difference in immune mediator concentrations between 5 and 10 mL CVLs. In cases where low abundance immune mediators are of primary interest, using a non-CVL sample will maximize detectability. In other cases, there are additional factors to take into account, such as the much higher sample volumes provided by CVL (allowing easier aliquoting and sharing), availability of clinical facilities, and participant preference.

We did not observe any consistent differences in immune mediator concentrations between ELISA and MSD assays. There was some indication that Luminex led to lower concentrations than ELISA, consistent with previous findings [78], but the differences were less consistent than for sample type. Differences between these assay methods are likely to depend more on the immune mediator (i.e., capture and detection antibody-dependent), than on the immunoassay platform.

There was no consistent effect of normalization to total protein, so it is unclear whether such normalization is beneficial. Notably, these observations were almost exclusively from studies using CVL. There was some suggestion of a benefit of normalizing to total protein for the two studies using non-CVL samples (swabs and menstrual cups), but more research is needed.

### Secondary outcomes: optimal phasing method

We found that our criteria for determining menstrual cycle phase by serum progesterone levels or by days since LMP led to similar results, with only 11% of samples categorized as opposite phases by the two methods. Effect sizes for differences between menstrual cycle phases were well correlated. Thus, both methods give consistent results. However, many more samples could not be assigned to a phase by days since LMP, leading to unused samples. Thus, serum progesterone allows a greater proportion of samples to be analyzed. It also allows for more flexibility in scheduling as compared to requiring participants to visit the clinic on a specific day of the cycle. However, measuring progesterone requires a blood draw, which is a disadvantage.

### Conclusions

Our unique study draws on work published in dozens of studies, performed by hundreds of investigators, with samples provided by thousands of participants, representing a remarkable collaboration of scientists from across the field. By collecting and re-analyzing IPD from these studies, we were able to leverage the information from those studies in a new way and make data from many of these studies available for future similar analyses in Additional file 3. We identified immune mediators with dynamic expression during the menstrual cycle as well as others that remain constant throughout. The decreases we observed in many immune mediators during the luteal phase are consistent with prior claims that immunity wanes during the luteal phase, likely creating a more tolerogenic environment for implantation of a semi-allogeneic embryo. In compensation, it appears that innate antimicrobial factors, such as beta-defensins, increase during the luteal phase. Lastly, we found that the magnitude of the cycle's effect differs by sample type, which should be considered when choosing which type of samples to collect. Our findings open the door to many future research studies exploring the functional consequences of these changes.

### Abbreviations

BCA: Bicinchoninic acid; BV: Bacterial vaginosis; CVL: Cervicovaginal lavage; CVT: Cervicovaginal tract; ELISA: Enzyme-linked immunosorbent assay; GRADE: Grading of recommendations, assessment, development and

evaluations; HIV: Human immunodeficiency virus; IPD: Individual participant data; IUD: Intrauterine device; LH: Luteinizing hormone; LMP: Last menstrual period; LPS: Lipopolysaccharide; mIU/mL: Milli-international units per milliliter; MSD: Meso scale discovery; NK: Natural killer; pg/mL: Picogram per milliliter; PRISMA-P: Preferred Reporting Items for Systematic Review and Meta-Analysis Protocols; PRISMA-IPD: Preferred Reporting Items for Systematic Review and Meta-Analysis of Individual Participant Data; PSA: Prostate-specific antigen; RBC: Red blood cell; STI: Sexually transmitted infection.

### Supplementary Information

The online version contains supplementary material available at <https://doi.org/10.1186/s12916-022-02532-9>.

**Additional file 1.** Supporting methods documents. PRISMA-P and PRISMA-IPD checklists, database search strategies, manuscript screening form, risk of bias instrument, and strength of evidence tool.

**Additional file 2.** Amendments to the pre-registered protocol.

**Additional file 3.** Code and data. IPD from co-authors who agreed to share it, results of all analyses presented in the paper, and R code files necessary to reproduce the analysis and figures.

**Additional file 4.** Concentration and forest plots for each individual immune mediator. *Concentration plots* - Each symbol shows the concentration of the indicated immune mediator in a single sample. Each study is plotted separately. Lines connect samples from the same participant; in some cases participants provided multiple samples in the same phase, in which case multiple symbols within the same phase may be connected. Pale grey symbols are below the lower limit of detection and are assigned the value of half the lower limit of detection. *Forest plots* - Each row represents a different study, with the vertical line at the middle of each square indicating the mean and the horizontal line indicating the 95% confidence interval. Positive numbers indicate higher concentrations during the luteal phase (compared to the follicular phase), while negative numbers indicate lower concentrations during the luteal phase (compared to the follicular phase). The size of the squares is proportional to how heavily the study is weighted in the meta-analysis. The center of the diamond and the vertical dotted line indicates the meta-effect as determined by the random effects model. The width of the diamond indicates the 95% confidence interval of the meta-effect. A narrow diamond indicates small confidence intervals, a wide diamond indicates large confidence intervals. TE, treatment effect (log<sub>2</sub>-pg/mL of the luteal phase minus log<sub>2</sub>-pg/mL of the follicular phase); seTE, standard error of the treatment effect; 95%-CI, 95% confidence interval around the treatment effect; Weight, the percentage of the meta-estimate contributed by each study.

**Additional file 5: Figure S1.** Assessment of publication bias. **A** Funnel plots. Symbols show the effect of the menstrual cycle (x-axis) and the standard error of that effect (y-axis, reversed). Each symbol shows an individual study. Vertical solid line shows no effect. Vertical dashed line shows the meta-estimate of effect. Diagonal dashed lines enclose the region expected to include 95% of studies based on the estimated meta-effect and the standard errors. **B** Results of Egger's tests for publication bias.

**Figure S2.** Perioviulatory meta-analyses. **A** The log<sub>2</sub> difference between perioviulatory and follicular phases (log<sub>2</sub>-pg/mL of the follicular phase minus log<sub>2</sub>-pg/mL of the perioviulatory phase). For TGF-β1, the error bars for one study and the meta-estimate extend off-scale. **B** The log<sub>2</sub> difference between perioviulatory and luteal phases (log<sub>2</sub>-pg/mL of the luteal phase minus log<sub>2</sub>-pg/mL of the perioviulatory phase). For IL-10, the error bars for one study extend off-scale. Each row represents a different immune mediator, with the symbols showing the mean and the lines showing the 95% confidence intervals. Gray symbols indicate individual studies and black the meta-estimates as determined by inverse-variance pooling random effects models. Black filled symbols indicate  $p < 0.05$  while white filled symbols indicate  $p > 0.05$ . Positive numbers indicate higher during the follicular or luteal phase, while negative numbers indicate higher during the perioviulatory phase. **Fig S3.** Subgroup analysis: Does the effect of menstrual cycle differ by assay method, geographical region, or method of determining menstrual phase? **A** Meta-analyses, comparing all studies (black circles) to studies grouped by assay method

(ELISA: blue squares; MSD: yellow triangles; Luminex: green diamonds). **B** Meta-analyses, comparing all studies (black circles) to studies grouped by geographical region of sample origin (Africa: blue diamonds; Europe: red squares; North America: green triangles). **C** Meta-analyses, comparing all studies (black circles) to studies grouped by method of menstrual cycle phasing (Days since LMP: orange squares; Progesterone: pale purple diamonds; Progesterone plus LH: dark purple triangles). **Figure S4.** Secondary outcomes: Method of determining menstrual cycle phase and normalization to total protein. **A** The standard errors of the effect sizes for the difference between menstrual cycle phases, with phases determined by days since last menstrual period ("LMP") or serum progesterone ("Prog"). Each symbol represents an immune factor, with lines connecting the same immune factor. **B** The standard errors of the effect sizes for the difference between menstrual cycle phases as determined using raw concentration measurements (pg/mL) and concentrations normalized to total protein (pg/pg total protein). Each symbol represents an immune factor, with lines connecting the same immune factor. **Table S1.** Summary of immune mediators measured in single studies. **Table S2.** Summary of follicular vs. periovulatory meta-analyses. **Table S3.** Summary of luteal vs. periovulatory meta-analyses. **Table S4.** Covariates adjusted for in multivariate analysis of each study.

### Acknowledgements

We would like to thank Diana Loudon from the UW Health Sciences Library for devising the search strategy and the Endocrine Technologies Core (NIH P51OD011092) at the Oregon National Primate Research Center for measuring progesterone concentrations. We would like to acknowledge the Institute of Tropical Medicine for providing the Jaspers-2017 data.

Members of the Consortium for Assessing Immunity Across the Menstrual Cycle

Salim S Abdool Karim  
 Max Abou  
 Melis N Anahtar  
 Sharon M Anderson  
 Aura Andreasen  
 Trong T Ao  
 David F Archer  
 Kevin K Arien  
 Kelly B Arnold  
 Susana Asin  
 Susan Baden  
 Bernard S Bagaya  
 Kathy Baisley  
 Emma Barnard  
 Melissa M Barousse  
 Angela Bartolf  
 Brian A Bernick  
 Kenzie Birse  
 Andrea K Boggild  
 Genevieve Boily-Larouche  
 Lucy A Boksa  
 Brittany A Bowman  
 Fredrick P Bowman  
 Frideborg Bradley  
 Kristina Broliden  
 Adam D Burgener  
 Jozefien Buyze  
 Elizabeth H Byrne  
 Phillip E Castle  
 Neelima Chandra  
 Stacey Chapman  
 Hua Yun Chen  
 Juliana Cheruiyot  
 Ralph R Chesson  
 Kathleen E Cohen  
 Piet Cools  
 Valerie Cortez  
 Catherine Cosgrove  
 Gary R Coulton

Peggy A Crowley-Nowick  
 Tania Crucitti  
 Tina D Cunningham  
 Susan Cu-Uvin  
 Hassan Y Dawood  
 Sinead Delany-Moretlwe  
 Gustavo F Doncel  
 Krista L Dong  
 Betty A Donoval  
 Brenden Dufault  
 Kathleen Dunlap  
 Laura J Dunphy  
 Robert P Edwards  
 Lars Engstrand  
 Terri Espinosa  
 John V Fahey  
 Titilayo Fashemi  
 Raina N Fichorova  
 Paul L Fidel Jr  
 J Dennis Fortenberry  
 Keith R Fowke  
 Suzanna C Francis  
 Jamie L Freiermuth  
 Ronald M Galiwango  
 Musie S Ghebremichael  
 Mimi Ghosh  
 Sara V Good  
 Odin Goovaerts  
 Parrie J Graham  
 Liselotte Hardy  
 Klara Hasselrot  
 Richard J Hayes  
 Betsy C Herold  
 Carolina Herrera  
 Ronald C Hershow  
 Allan Hildesheim  
 Sharon Hillier  
 Florian Hladik  
 Yanwen Hou  
 Hazel Huang  
 Sean M Hughes  
 Loris Y Hwang  
 Andrea Introini  
 Nasreen Ismail  
 Terry Jacot  
 Mariel Jais  
 Vicky Jespers  
 Vineet Joag  
 Christine Johnston  
 Clifford Jones  
 Sarah Joseph  
 Saidi Kapiga  
 John C Kappes  
 Rupert Kaul  
 Joshua Kimani  
 Makobu Kimani  
 Thomas Kimble  
 Noah Kiwanuka  
 Monika Kowatsch  
 Jessie Kwatampora  
 Douglas S Kwon  
 Jordan K Kyongo  
 Timothy Lahey  
 Julie Lajoie  
 Alan Landay  
 Douglas A Lauffenburger  
 Dara A Lehman  
 Alasdair Leslie  
 Huiying Li  
 Lenine J Liebenberg  
 Jay A Lieberman

Vitali Lounev  
 Yifei Ma  
 Amanda Mabhula  
 Jennifer Mabuka  
 Kaballa Maganja  
 Julia Makinde  
 Jeanne Marrazzo  
 Lindi Masson  
 Kenneth H Mayer  
 Stuart McCorrister  
 Lyle R McKinnon  
 Joris Menten  
 Pedro M M Mesquita  
 Johan Michiels  
 Elizabeth Micks  
 Sebastian Mirkin  
 Amber Moodley  
 Anna-Barbara Moscicki  
 Juliet Mpendo  
 Lucy R Mukura  
 Mary Mwaura  
 Gilles Ndayisaba  
 Thumbi Ndung'u  
 Jane Njoki  
 Laura Noel-Romas  
 Richard M Novak  
 Billy Nyanga  
 Christina Ochsenbauer  
 Katherine Odem-Davis  
 Gregory S Olson  
 Kenneth Omollo  
 Donald P Orr  
 Julie Overbaugh  
 Julius Oyugi  
 Nikita Padavattan  
 Tarita Pakrashi  
 Urvashi Pandey  
 Jo-Ann S Passmore  
 Mickey V Patel  
 Terri Pustilnik  
 Lorna Rabe  
 Nicola Richardson-Harman  
 Christiane Rollenhagen  
 Laura Romas  
 Richard M Rossoll  
 Jill L Schwartz  
 Mark E Scott  
 Maike Seifert  
 A Shah  
 Kamnoosh Shahabi  
 Robin J Shattock  
 Zheng Shen  
 Baochen Shi  
 Sengeziwe Sibeko  
 Yan Song  
 Gregory Spear  
 Intira Sriprasert  
 Brian S Starkman  
 Howard D Strickler  
 Jan L Sumerel  
 Egbert Tannich  
 Katherine P Theall  
 Andrea Ries Thurman  
 Annelie Tjernlund  
 Janneke van de Wijgert  
 Barbara Van Der Pol  
 Guido Vanham  
 Bruce D Walker  
 Joan L Walker  
 Deborah Watson-Jones  
 Hugo Wefer

Garrett R Westmacott  
 Charles R Wira  
 Peter F Wright  
 Sergey Yegorov  
 Najj Younes  
 Nazita Yousefieh

#### Authors' contributions

The concept for this study was devised by SMH, with contributions by EM and FH. SMH drafted the manuscript. ACR, FH, and EM provided expertise on the menstrual cycle and cervicovaginal tract. ACR and NRM were the investigators for the Kenya Girls Study. EL provided expertise in epidemiology and meta-analysis. RK provided statistical advice. SH and CL reviewed abstracts and manuscripts for eligibility, performed data extraction and bias assessment, and graded the quality of the evidence. SMH and CL contacted the authors to request IPD. SMH performed the data analysis and lab assays. MNA, MBH, FB, PEC, VC, GFD, RF, PLF, KRF, SCF, MG, LYH, MJ, VJ, VJ, RK, JK, TL, HL, JM, LRM, ABM, RMN, MVP, IS, ART, and SY contributed IPD. All authors read and approved the final manuscript.

#### Funding

Funding for this review was provided by the University of Washington Royalty Research Fund (grant A149192) and the National Institute of Allergy and Infectious Diseases (NIAID; R03AI154366). Funding for the Kenya Girls Study was provided by the National Institute of Child Health and Human Development (R01 HD091996 to ACR), the NIAID (P01 AI030731; PI Anna Wald), and the Center for AIDS Research of the University of Washington/Fred Hutchinson Cancer Research Center (AI027757). For specific funding acknowledgement of each individual study, please refer to the original publication of the study. This review has no sponsor. The funders played no role in designing the protocol, conducting the review and meta-analysis, or interpretation or publication of the results.

#### Availability of data and materials

All R code is included in Additional file 3. All study-level and meta-analysis level outputs (effect of menstrual cycle at the study and meta-analysis level) are included in Additional file 3 to allow replication and updating of the meta-analysis in the future. Raw IPD is included in Additional file 3 for those studies where investigators agreed to release the data.

#### Declarations

##### Ethics approval and consent to participate

All participants provided written, informed consent in the Kenya Girls Study as described in the main manuscript for that study [47]. Only de-identified samples were used in this study.

##### Consent for publication

Not applicable.

##### Competing interests

EML's contributions to this study occurred while affiliated with the University of Washington. At the time of submission, EML was an employee of AbbVie, Inc and holds stock or stock grants. The other authors declare that they have no competing interests.

##### Author details

<sup>1</sup>Department of Obstetrics and Gynecology, University of Washington, Seattle, WA, USA. <sup>2</sup>Department of Global Health, University of Washington, Seattle, WA, USA. <sup>3</sup>Ragon Institute of MIT and Harvard, Massachusetts General Hospital, Boston, MA, USA. <sup>4</sup>University of Louisville, Louisville, KY, USA. <sup>5</sup>Department of Medicine, Solna, Karolinska Institutet, Karolinska University Hospital, Stockholm, Sweden. <sup>6</sup>Division of Cancer Prevention, National Cancer Institute, National Institutes of Health, Rockville, MD, USA. <sup>7</sup>Division of Cancer Epidemiology and Genetics, National Cancer Institute, National Institutes of Health, Rockville, MD, USA. <sup>8</sup>Department of Molecular, Cell & Developmental Biology, University of California, Santa Cruz, Santa Cruz, CA, USA. <sup>9</sup>CONRAD, Eastern Virginia Medical School, Norfolk, VA, USA. <sup>10</sup>Department of Obstetrics, Gynecology and Reproductive Biology, Harvard Medical School, Brigham and Women's Hospital, Boston, MA, USA. <sup>11</sup>Louisiana State University Health, New Orleans,

LA, USA. <sup>12</sup>Department of Medical Microbiology & Infectious Diseases, University of Manitoba, Winnipeg, Manitoba, Canada. <sup>13</sup>MRC International Statistics and Epidemiology Group, London School of Hygiene and Tropical Medicine, London, UK. <sup>14</sup>Department of Epidemiology, The George Washington University, Washington, DC, USA. <sup>15</sup>Department of Pediatrics, University of California, Los Angeles, Los Angeles, CA, USA. <sup>16</sup>Office of Laboratory Safety, The George Washington University, Washington, DC, USA. <sup>17</sup>Institute of Tropical Medicine, Antwerp, Belgium. <sup>18</sup>Department of Microbiology and Immunology, University of Minnesota, Minneapolis, MN, USA. <sup>19</sup>Department of Medicine, University of Toronto, Toronto, Ontario, Canada. <sup>20</sup>Virology Unit, Department of Biomedical Sciences, Institute of Tropical Medicine, Antwerp, Belgium. <sup>21</sup>University of Vermont Larner College of Medicine, Burlington, VT, USA. <sup>22</sup>Department of Molecular and Medical Pharmacology, Crump Institute for Molecular Imaging, University of California, Los Angeles, Los Angeles, CA, USA. <sup>23</sup>IAVI Human Immunology Laboratory, Imperial College, London, England, UK. <sup>24</sup>IAVI, New York, NY, USA. <sup>25</sup>Centre for the AIDS Programme of Research in South Africa (CAPRISA), Durban, South Africa. <sup>26</sup>Department of Medical Microbiology and Immunology, University of Nairobi, Nairobi, Kenya. <sup>27</sup>University of Illinois, Chicago, IL, USA. <sup>28</sup>Geisel School of Medicine at Dartmouth, Lebanon, NH, USA. <sup>29</sup>Department of OB/GYN, Keck School of Medicine, University of Southern California, Los Angeles, CA, USA. <sup>30</sup>Department of Biochemistry and Biomedical Sciences, McMaster University, Hamilton, Ontario, Canada. <sup>31</sup>Center for Clinical Research, Kenya Medical Research Institute, Nairobi, Kenya. <sup>32</sup>Department of Medicine, University of Washington, Seattle, WA, USA. <sup>33</sup>Vaccine and Infectious Disease Division, Fred Hutch, Seattle, WA, USA.

Received: 20 July 2020 Accepted: 16 August 2022

Published online: 05 October 2022

## References

- Wira CR, Rodriguez-Garcia M, Patel MV. The role of sex hormones in immune protection of the female reproductive tract. *Nat Rev Immunol*. 2015;15(4):217–30.
- Henning TR, Butler K, Hanson D, Sturdevant G, Ellis S, Sweeney EM, et al. Increased susceptibility to vaginal simian/human immunodeficiency virus transmission in pig-tailed macaques coinfecting with *Chlamydia trachomatis* and *Trichomonas vaginalis*. *J Infect Dis*. 2014;210(8):1239–47.
- Kersh EN, Henning T, Vishwanathan SA, Morris M, Butler K, Adams DR, et al. SHIV susceptibility changes during the menstrual cycle of pigtail macaques. *J Med Primatol*. 2014;43(5):310–6.
- Vishwanathan SA, Guenther PC, Lin CY, Dobard C, Sharma S, Adams DR, et al. High susceptibility to repeated, low-dose, vaginal SHIV exposure late in the luteal phase of the menstrual cycle of pigtail macaques. *J Acquired Immune Def Syndr* (1999). 2011;57(4):261–4.
- Saba E, Grivel JC, Vanpouille C, Brichacek B, Fitzgerald W, Margolis L, et al. HIV-1 sexual transmission: early events of HIV-1 infection of human cervico-vaginal tissue in an optimized ex vivo model. *Mucosal Immunol*. 2010;3(3):280–90.
- Szotek EL, Narasipura SD, Al-Harhi L. 17 $\beta$ -Estradiol inhibits HIV-1 by inducing a complex formation between  $\beta$ -catenin and estrogen receptor  $\alpha$  on the HIV promoter to suppress HIV transcription. *Virology*. 2013;443(2):375–83.
- Tasker C, Ding J, Schmolke M, Rivera-Medina A, García-Sastre A, Chang TL. 17 $\beta$ -estradiol protects primary macrophages against HIV infection through induction of interferon- $\alpha$ . *Viral Immunol*. 2014;27(4):140–50.
- Al-Harhi L, Kovacs A, Coombs RW, Reichelderfer PS, Wright DJ, Cohen MH, et al. A menstrual cycle pattern for cytokine levels exists in HIV-positive women: implication for HIV vaginal and plasma shedding. *AIDS*. 2001;15(12):1535–43.
- Al-Harhi L, Wright DJ, Anderson D, Cohen M, Matityahu D, Cohn J, et al. The impact of the ovulatory cycle on cytokine production: evaluation of systemic, cervicovaginal, and salivary compartments. *J Interf Cytokine Res*. 2000;20(8):719–24.
- Boily-Larouche G, Lajoie J, Dufault B, Omollo K, Cheruiyot J, Njoki J, et al. Characterization of the Genital Mucosa Immune Profile to Distinguish Phases of the Menstrual Cycle: Implications for HIV Susceptibility. *J Infect Dis*. 2019;219(6):856–66.
- Bradley F, Birse K, Hasselrot K, Noel-Romas L, Introini A, Wefer H, et al. The vaginal microbiome amplifies sex hormone-associated cyclic changes in cervicovaginal inflammation and epithelial barrier disruption. *Am J Reprod Immunol*. 2018;80(1):e12863.
- Byrne EH, Anahtar MN, Cohen KE, Moodley A, Padavattan N, Ismail N, et al. Association between injectable progestin-only contraceptives and HIV acquisition and HIV target cell frequency in the female genital tract in South African women: a prospective cohort study. *Lancet Infect Dis*. 2016;16(4):441–8.
- Castle PE, Hildesheim A, Bowman FP, Strickler HD, Walker JL, Pustilnik T, et al. Cervical concentrations of interleukin-10 and interleukin-12 do not correlate with plasma levels. *J Clin Immunol*. 2002;22(1):23–7.
- Cortez V, Odem-Davis K, Lehman DA, Mabuka J, Overbaugh J. Quotidian changes of genital tract cytokines in human immunodeficiency virus-1-infected women during the menstrual cycle. *Open Forum Infect Dis Ther*. 2014;1(1):ofu002.
- Francis SC, Hou Y, Baisley K, van de Wijgert J, Watson-Jones D, Ao TT, et al. Immune Activation in the Female Genital Tract: Expression Profiles of Soluble Proteins in Women at High Risk for HIV Infection. *PLoS One*. 2016;11(1):e0143109.
- Gargiulo AR, Fichorova RN, Politch JA, Hill JA, Anderson DJ. Detection of implantation-related cytokines in cervicovaginal secretions and peripheral blood of fertile women during ovulatory menstrual cycles. *Fertil Steril*. 2004;82(Suppl 3):1226–34.
- Gravitt PE, Hildesheim A, Herrero R, Schiffman M, Sherman ME, Bratti MC, et al. Correlates of IL-10 and IL-12 concentrations in cervical secretions. *J Clin Immunol*. 2003;23(3):175–83.
- Hughes BL, Dutt R, Raker C, Barthelemy M, Rossoll RM, Ramratnam B, et al. The impact of pregnancy on anti-HIV activity of cervicovaginal secretions. *Am J Obstet Gynecol*. 2016;215(6):748, e1–e12.
- Jais M, Younes N, Chapman S, Cu-Uvin S, Ghosh M. Reduced levels of genital tract immune biomarkers in postmenopausal women: implications for HIV acquisition. *Am J Obstet Gynecol*. 2016;215(3):324 e1–e10.
- Jaumdally SZ, Masson L, Jones HE, Dabee S, Hoover DR, Gamieldien H, et al. Lower genital tract cytokine profiles in South African women living with HIV: influence of mucosal sampling. *Sci Rep*. 2018;8(1):12203.
- Jespers V, Kyongo J, Joseph S, Hardy L, Cools P, Crucitti T, et al. A longitudinal analysis of the vaginal microbiota and vaginal immune mediators in women from sub-Saharan Africa. *Sci Rep*. 2017;7:13.
- Keller MJ, Guzman E, Hazrati E, Kasowitz A, Cheshenko N, Wal-lenstein S, et al. PRO 2000 elicits a decline in genital tract immune mediators without compromising intrinsic antimicrobial activity. *AIDS*. 2007;21(4):467–76.
- Kyongo JK, Jespers V, Goovaerts O, Michiels J, Menten J, Fichorova RN, et al. Searching for lower female genital tract soluble and cellular biomarkers: defining levels and predictors in a cohort of healthy Caucasian women. *PLoS One*. 2012;7(8):e43951.
- Luo L, Ibaragi T, Maeda M, Nozawa M, Kasahara T, Sakai M, et al. Interleukin-8 levels and granulocyte counts in cervical mucus during pregnancy. *Am J Reprod Immunol*. 2000;43(2):78–84.
- Macneill C, de Guzman G, Sousa GE, Umstead TM, Phelps DS, Floros J, et al. Cyclic changes in the level of the innate immune molecule, surfactant protein-a, and cytokines in vaginal fluid. *Am J Reprod Immunol*. 2012;68(3):244–50.
- Makinde J, Jones C, Bartolf A, Sibeko S, Baden S, Cosgrove C, et al. Localized cyclical variations in immunoproteins in the female genital tract and the implications on the design and assessment of mucosal infection and therapies. *Am J Reprod Immunol*. 2018;79(2):1–9.
- Patel MV, Ghosh M, Fahey JV, Ochsenbauer C, Rossoll RM, Wira CR. Innate immunity in the vagina (Part II): Anti-HIV activity and antiviral content of human vaginal secretions. *Am J Reprod Immunol*. 2014;72(1):22–33.
- Rahman S, Rabbani R, Wachihi C, Kimani J, Plummer FA, Ball TB, et al. Mucosal serpin A1 and A3 levels in HIV highly exposed sero-negative women are affected by the menstrual cycle and hormonal contraceptives but are independent of epidemiological confounders. *Am J Reprod Immunol*. 2013;69(1):64–72.
- Rodriguez-Garcia M, Barr FD, Crist SG, Fahey JV, Wira CR. Phenotype and susceptibility to HIV infection of CD4+ Th17 cells in the human female reproductive tract. *Mucosal Immunol*. 2014;7(6):1375–85.
- Shrier LA, Bowman FP, Lin M, Crowley-Nowick PA. Mucosal immunity of the adolescent female genital tract. *J Adolesc Health*. 2003;32(3):183–6.

31. Shust GF, Cho S, Kim M, Madan RP, Guzman EM, Pollack M, et al. Female genital tract secretions inhibit herpes simplex virus infection: correlation with soluble mucosal immune mediators and impact of hormonal contraception. *Am J Reprod Immunol*. 2010;63(2):110–9.
32. Tawara F, Tamura N, Suganuma N, Kanayama N. Changes in cervical neutrophil elastase levels during the menstrual cycle. *Reprod Med Biol*. 2012;11(1):65–8.
33. Valore EV, Park CH, Igrei SL, Ganz T. Antimicrobial components of vaginal fluid. *Am J Obstet Gynecol*. 2002;187(3):561–8.
34. Moher D, Shamseer L, Clarke M, Ghersi D, Liberati A, Petticrew M, et al. Preferred reporting items for systematic review and meta-analysis protocols (PRISMA-P) 2015 statement. *Syst Rev*. 2015;4:1.
35. Stewart LA, Clarke M, Rovers M, Riley RD, Simmonds M, Stewart G, et al. Preferred Reporting Items for Systematic Review and Meta-Analyses of individual participant data: the PRISMA-IPD Statement. *JAMA*. 2015;313(16):1657–65.
36. Lefebvre C, Glanville J, Briscoe S, Littlewood A, Marshall C, Metzendorf M-I, et al. Chapter 4: Searching for and selecting studies. In: Higgins J, Thomas J, Chandler J, Cumpston M, Li T, Page M, et al., editors. *Cochrane Handbook for Systematic Reviews of Interventions version 6* (updated July 2019): Cochrane; 2019.
37. Wallace BC, Small K, Brodley CE, Lau J, Trikalinos TA. Deploying an interactive machine learning system in an evidence-based practice center: abstract. Proceedings of the 2nd ACM SIGHIT International Health Informatics Symposium. Miami: Association for Computing Machinery; 2012. p. 819–24.
38. Rohatgi A. WebPlotDigitizer 2019 [updated]; 2019. Available from: <https://automeris.io/WebPlotDigitizer>
39. Luo D, Wan X, Liu J, Tong T. Optimally estimating the sample mean from the sample size, median, mid-range, and/or mid-quartile range. *Stat Methods Med Res*. 2018;27(6):1785–805.
40. McGrath S, Zhao X, Steele R, Thoms BD, Benedetti A, Collaboration DESD. Estimating the sample mean and standard deviation from commonly reported quantiles in meta-analysis. *Stat Methods Med Res*. 2020;29(9):2520–37.
41. Shi J, Luo D, Weng H, Zeng XT, Lin L, Chu H, et al. Optimally estimating the sample standard deviation from the fivenumbersummary. *Res Synth Methods*. 2020;11(5):641–54.
42. Wan X, Wang W, Liu J, Tong T. Estimating the sample mean and standard deviation from the sample size, median, range and/or interquartile range. *BMC Med Res Methodol*. 2014;14:135.
43. Stricker R, Eberhart R, Chevailler MC, Quinn FA, Bischof P, Stricker R. Establishment of detailed reference values for luteinizing hormone, follicle stimulating hormone, estradiol, and progesterone during different phases of the menstrual cycle on the Abbott ARCHITECT analyzer. *Clin Chem Lab Med*. 2006;44(7):883–7.
44. Charbek E. Luteinizing Hormone: Medscape; 2015. Available from: <https://emedicine.medscape.com/article/2089268-overview>
45. Leiva RA, Bouchard TP, Abdullah SH, Ecochard R. Urinary luteinizing hormone tests: which concentration threshold best predicts ovulation? *Front Public Health*. 2017;5:320.
46. Guyatt GH, Oxman AD, Vist GE, Kunz R, Falck-Ytter Y, Alonso-Coello P, et al. GRADE: an emerging consensus on rating quality of evidence and strength of recommendations. *BMJ*. 2008;336(7650):924–6.
47. Yuh T, Micheni M, Selke S, Oluoch L, Kiptinness C, Magaret A, et al. Sexually transmitted infections among Kenyan adolescent girls and young women with limited sexual experience. *Front Public Health*. 2020;8:303.
48. Arnold KB, Burgener A, Birse K, Romas L, Dunphy LJ, Shahabi K, et al. Increased levels of inflammatory cytokines in the female reproductive tract are associated with altered expression of proteases, mucosal barrier proteins, and an influx of HIV-susceptible target cells. *Mucosal Immunol*. 2016;9(1):194–205.
49. Barousse MM, Theall KP, Van Der Pol B, Fortenberry JD, Orr DP, Fidel PL Jr. Susceptibility of middle adolescent females to sexually transmitted infections: impact of hormone contraception and sexual behaviors on vaginal immunity. *Am J Reprod Immunol*. 2007;58(2):159–68.
50. Fidel PL Jr, Barousse M, Lounev V, Espinosa T, Chesson RR, Dunlap K. Local immune responsiveness following intravaginal challenge with *Candida* antigen in adult women at different stages of the menstrual cycle. *Med Mycol*. 2003;41(2):97–109.
51. Ghosh M, Shen Z, Fahey JV, Cu-Uvin S, Mayer K, Wira CR. Trappin-2/Elafin: a novel innate anti-human immunodeficiency virus-1 molecule of the human female reproductive tract. *Immunology*. 2010;129(2):207–19.
52. Hughes SM, Pandey U, Johnston C, Marrazzo J, Hladik F, Micks E. Impact of the menstrual cycle and ethinyl estradiol/etonogestrel contraceptive vaginal ring on granulysin and other mucosal immune mediators. *Am J Reprod Immunol*. 2021;86(2):e13412.
53. Hwang LY, Scott ME, Ma Y, Moscicki AB. Higher levels of cervicovaginal inflammatory and regulatory cytokines and chemokines in healthy young women with immature cervical epithelium. *J Reprod Immunol*. 2011;88(1):66–71.
54. Jais M, Younes N, Chapman S, Cu-Uvin S, Ghosh M. Reduced Levels and Bioactivity of Endogenous Protease Cathepsin D in Genital Tract Secretions of Postmenopausal Women. *AIDS Res Hum Retrovir*. 2017;33(5):407–9.
55. Lahey T, Ghosh M, Fahey JV, Shen Z, Mukura LR, Song Y, et al. Selective impact of HIV disease progression on the innate immune system in the human female reproductive tract. *PLoS One*. 2012;7(6):e38100.
56. Lieberman JA, Moscicki AB, Sumerel JL, Ma Y, Scott ME. Determination of cytokine protein levels in cervical mucus samples from young women by a multiplex immunoassay method and assessment of correlates. *Clin Vaccine Immunol*. 2008;15(1):49–54.
57. Moscicki AB, Shi B, Huang H, Barnard E, Li H. Cervical-Vaginal Microbiome and Associated Cytokine Profiles in a Prospective Study of HPV 16 Acquisition, Persistence, and Clearance. *Front Cell Infect Microbiol*. 2020;10:569022.
58. Novak RM, Donoval BA, Graham PJ, Boksa LA, Spear G, Hershov RC, et al. Cervicovaginal levels of lactoferrin, secretory leukocyte protease inhibitor, and RANTES and the effects of coexisting vaginosis in human immunodeficiency virus (HIV)-seronegative women with a high risk of heterosexual acquisition of HIV infection. *Clin Vaccine Immunol*. 2007;14(9):1102–7.
59. Sriprasert I, Pakrashi T, Shah A, Jacot T, Bernick B, Mirkin S, et al. A pilot study: estradiol/progesterone effect on cervico-vaginal cytokines in premenopause and postmenopause. *Climacteric*. 2020;23(3):306–10.
60. Thurman AR, Kimble T, Herold B, Mesquita PMM, Fichorova RN, Dawood HY, et al. Bacterial Vaginosis and Subclinical Markers of Genital Tract Inflammation and Mucosal Immunity. *AIDS Res Hum Retrovir*. 2015;31(11):1139–52.
61. Thurman AR, Yousefieh N, Chandra N, Kimble T, Asin S, Rollenhagen C, et al. Comparison of Mucosal Markers of Human Immunodeficiency Virus Susceptibility in Healthy Premenopausal Versus Postmenopausal Women. *AIDS Res Hum Retrovir*. 2017;33(8):807–19.
62. Yegorov S, Joag V, Galiwango RM, Good SV, Mpendo J, Tannich E, et al. Schistosoma mansoni treatment reduces HIV entry into cervical CD4+ T cells and induces IFN- $\gamma$  pathways. *Nat Commun*. 2019;10(1):2296.
63. Safaeian M, Falk RT, Rodriguez AC, Hildesheim A, Kemp T, Williams M, et al. Factors associated with fluctuations in IgA and IgG levels at the cervix during the menstrual cycle. *J Infect Dis*. 2009;199(3):455–63.
64. Sokol CL, Luster AD. The chemokine system in innate immunity. *Cold Spring Harb Perspect Biol*. 2015;7(5):1–19.
65. Barbonetti A, Vassallo MR, Pelliccione F, D'Angeli A, Santucci R, Muciaccia B, et al. Beta-chemokine receptor CCR5 in human spermatozoa and its relationship with seminal parameters. *Hum Reprod*. 2009;24(12):2979–87.
66. Duan YG, Wehry UP, Buhren BA, Schrupf H, Olah P, Bunemann E, et al. CCL20-CCR6 axis directs sperm-oocyte interaction and its dysregulation correlates/associates with male infertility. *Biol Reprod*. 2020;103(3):630–42.
67. Kutteh WH, Prince SJ, Hammond KR, Kutteh CC, Mestecky J. Variations in immunoglobulins and IgA subclasses of human uterine cervical secretions around the time of ovulation. *Clin Exp Immunol*. 1996;104(3):538–42.
68. Usala SJ, Usala FO, Haciski R, Holt JA, Schumacher GF. IgG and IgA content of vaginal fluid during the menstrual cycle. *J Reprod Med*. 1989;34(4):292–4.
69. Kutteh WH, Hatch KD, Blackwell RE, Mestecky J. Secretory immune system of the female reproductive tract: I. Immunoglobulin and secretory component-containing cells. *Obstet Gynecol*. 1988;71(1):56–60.
70. Bergquist C, Johansson EL, Lagergard T, Holmgren J, Rudin A. Intranasal vaccination of humans with recombinant cholera toxin B subunit induces systemic and local antibody responses in the upper respiratory tract and the vagina. *Infect Immun*. 1997;65(7):2676–84.



71. Kozlowski PA, Williams SB, Lynch RM, Flanigan TP, Patterson RR, Cu-Uvin S, et al. Differential induction of mucosal and systemic antibody responses in women after nasal, rectal, or vaginal immunization: influence of the menstrual cycle. *J Immunol*. 2002;169(1):566–74.
72. Simpson SJ, Wiggins R, Fox JM, Mthethwa J, Cai C, Lacey CJN. Hepatitis B vaccination induces mucosal antibody responses in the female genital tract, indicating potential mechanisms of protection against infection. *Sex Transm Dis*. 2019;46(5):e53–e6.
73. Gaide Chevronnay HP, Selvais C, Emonard H, Galant C, Marbaix E, Henriët P. Regulation of matrix metalloproteinases activity studied in human endometrium as a paradigm of cyclic tissue breakdown and regeneration. *Biochim Biophys Acta*. 2012;1824(1):146–56.
74. Han JH, Kim MS, Lee MY, Kim TH, Lee MK, Kim HR, et al. Modulation of human beta-defensin-2 expression by 17beta-estradiol and progesterone in vaginal epithelial cells. *Cytokine*. 2010;49(2):209–14.
75. Patel MV, Fahey JV, Rossoll RM, Wira CR. Innate immunity in the vagina (part I): estradiol inhibits HBD2 and elafin secretion by human vaginal epithelial cells. *Am J Reprod Immunol*. 2013;69(5):463–74.
76. Archary D, Liebenberg LJ, Werner L, Tulsi S, Majola N, Naicker N, et al. Randomized cross-sectional study to compare HIV-1 specific antibody and cytokine concentrations in female genital secretions obtained by menstrual cup and cervicovaginal lavage. *PLoS One*. 2015;10(7):e0131906.
77. Dezzutti CS, Hendrix CW, Marrazzo JM, Pan Z, Wang L, Louissaint N, et al. Performance of swabs, lavage, and diluents to quantify biomarkers of female genital tract soluble mucosal mediators. *PLoS One*. 2011;6(8):e23136.
78. Fichorova RN, Richardson-Harman N, Alfano M, Belec L, Carbonneil C, Chen S, et al. Biological and technical variables affecting immunoassay recovery of cytokines from human serum and simulated vaginal fluid: a multicenter study. *Anal Chem*. 2008;80(12):4741–51.

## Publisher's Note

Springer Nature remains neutral with regard to jurisdictional claims in published maps and institutional affiliations.

Ready to submit your research? Choose BMC and benefit from:

- fast, convenient online submission
- thorough peer review by experienced researchers in your field
- rapid publication on acceptance
- support for research data, including large and complex data types
- gold Open Access which fosters wider collaboration and increased citations
- maximum visibility for your research: over 100M website views per year

At BMC, research is always in progress.

Learn more [biomedcentral.com/submissions](https://biomedcentral.com/submissions)

