

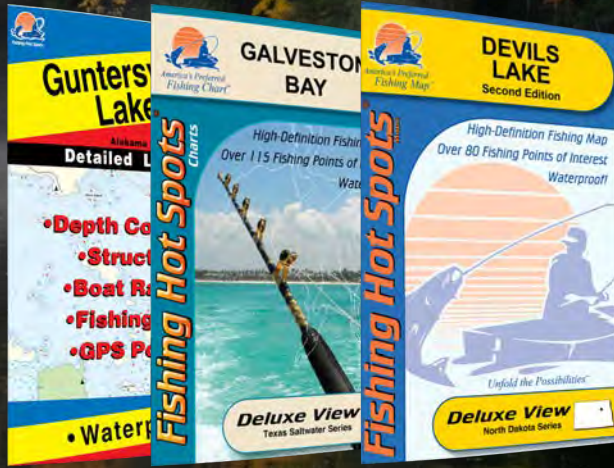
www.fishinghotspots.com

45° 0' 44.161" N 93° 28' 53.768" W



# Fishing Hot Spots<sup>®</sup>

## CATALOG



# AMERICA'S PREFERRED FISHING MAP<sup>™</sup>



FISHING AREAS



NAV AIDS



BOAT RAMPS



VEGETATION  
AREAS

# LAKE ACCESS









## D) NYSDEC - PREDERGAST POINT FISHING ACCESS SITE

**RAMP:** 2-lane, concrete

**PARKING:** 40 rigs, paved

**DESCRIPTION:** At this location there are two concrete loading piers and restroom facilities.

**DIRECTIONS:** Located on the west side of the Northern Basin, at Predergast Point (adjacent to the fish hatchery); the marked entrance is located on Route 394, about 4 miles northwest of the Route 17 interchange.


-  Public Access
-  Campground
-  Handicap Accessible
-  Fuel Dock
-  Beach Access
-  Shore Fishing
-  Pier Fishing
-  Marina

Lake Access		
ID	N. Latitude	W. Longitude
D	42°11.34'	79°26.46'
E	42°14.47'	79°29.63'
F	42°10.32'	79°24.83'

# ACCESS & FACILITY INFORMATION

# BE YOUR

# RESEARCHED FISHING SPOTS

 42) Largemouth bass are common in a few bays of the Northern Basin. Whitney Bay turns out good largemouth action all season long. Plastic worms, 4-inch tubes, and crankbaits are great selections. It is also one of the best Northern Basin spots for crappie April through mid-June, walleye July through September, and muskie August through October. The key location for all species is the deep weedline in 12 to 14 feet. Since Whitney is prime muskie spawning habitat, herbicide use is not allowed and the weedline is very consistent.

# TIPS AND TECHNIQUES

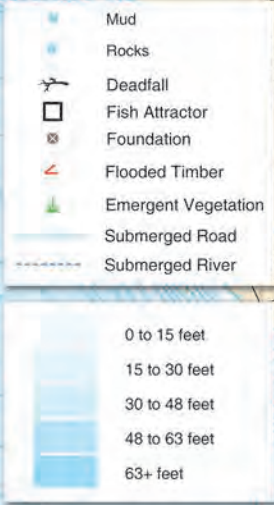
## WALLEYE



*Walleye (stizostedion vitreum)*

All interest shifts to walleye from opening day in early May through June, and weed edges in the Lower Lake offer the best action. During the daytime, especially mornings and evenings, work outside edges in 4 to 9 feet. Three methods are very productive for this walleye pattern: slow-trolled nightcrawler harnesses, trolling crankbaits (Rogues, Jr. ThunderSticks, Rapalas) and jigging. Chartreuse, orange and nickel are popular blade colors for nightcrawler rigs, while perch, fire tiger, black/silver and red colors are suggested for crankbait selection. Stay as close to the weedline as possible and try to keep the bait within 2 feet of bottom. Jigging presentations use a 1/8-ounce jig tipped with a whole nightcrawler or leech. Some anglers add a stinger hook to prevent short hits, especially with crawlers. Casting a 1/8-ounce jig tipped with a minnow to the weedlines is very effective. Slip-bobber rigs and Lindy rig/float jig combos tipped with nightcrawlers or leeches are also effective. Maple, Ashville, Bellview and Handley Bays are well-known opening day walleye regions.

Fishing Spots		
ID	N. Latitude	W. Longitude
1	42°06.44'	79°17.90'
2	42°06.53'	79°18.11'
3	42°06.62'	79°18.73'
4	42°06.60'	79°20.05'
5	42°06.85'	79°19.55'
6	42°07.29'	79°19.52'
7	42°06.59'	79°20.50'
8	42°06.37'	79°20.97'
9	42°07.54'	79°20.09'
10	42°06.64'	79°21.68'



### PHYSICAL PROPERTIES

**SIZE AND DEPTH:** 13,181 surface acres, with a maximum depth of 75 feet. The lake is 17 1/2 miles long and has an average width of 1 1/4 miles. Chautauqua's two basins are of nearly equal area and are separated by a narrow constriction at Bemus Point/Stow. The Northern Basin, locally called the Upper Lake, is much deeper, with a maximum depth of 75 feet and an average of 26 feet. The Southern Basin (Lower Lake) has a maximum depth of only 19 feet and an average of 11.

**WATER SOURCE:** Chautauqua is a drainage lake with the three largest tributaries being Goose, Prendergast and Dwitville Creeks. Lesser inlets include Ball, Bemus, Lighthouse, Mud and Dutch Hollow Creeks, and Big and Little Inlets. A substantial amount of water enters in deep springs, especially in the Northern Basin.

While Chautauqua's surface elevation of 1,308 feet is almost 750 feet higher than Lake Erie, less than 10 miles north, its water flows south via the Chadakoin River at Jamestown, and eventually to the Allegheny River. Warner Dam in Jamestown influences, but does not directly control, the lake's level. Annual fluctuation is within a range of about two feet, with highs normally in April, lows in February.

**SHORELINE:** The lake is surrounded by moderately rising uplands, about 60 percent wooded and 40 percent agricultural. Small wetlands at Prendergast Point, Tom's Point and Goose Creek/Ashville Bay adjoin less than one percent of the total shoreline. There is a significant wetland along the Chadakoin River downstream from the lake.

Ninety percent of the frontage is extensively developed with permanent and seasonal homes, condominiums, private camps, clubs and marinas.

**BOTTOM:** Characteristics vary greatly north and south of the narrows. The Northern Basin's lakebed consists primarily of glacial deposits with a thin layer of silt in some areas. The gravel ranges in size from coarse sand to cobble. Exceptions are the sandy silt that dominates the extreme north end of the lake, and the scattered areas of larger stones, and even some huge boulders along the east side from Dewittville to Long Point.

The bottom of the Southern Basin is almost totally covered with silt/mud. Important exceptions to this are the shoreline points, bars and shoals, which are normally gravel.

Wave-washed shallows less than 3-feet deep, lake-wide, are usually sand/gravel, except at the extreme south end, where silt predominates.

**WATER:** The Southern and Northern Basins differ substantially. The Lower Lake is very fertile (eutrophic) and murky, whereas the Upper Lake is moderately fertile (mesotrophic) and somewhat clearer. Summer water quality readings (visible clarity) average 2 to 3 feet in the Lower Lake, and 4 to 6 feet in the Upper.

Since it is so shallow, the Southern Basin never develops a thermocline; in fact, water temperatures are normally within 5 degrees from top to bottom. The Northern Basin does stratify in mid-to-late summer some years, establishing a thermocline 30 to 45 feet down. DEC testing has found that when this occurs, there is insufficient oxygen below the thermocline to support gamefish.

Plant growth is very heavy and extensive, especially in the Southern Basin. It can cover up to 20 percent of the Upper Lake's surface areas and up to 50 percent of the Lower Lake.

Pondweed is the dominant species, by far, are both exotics - curly leaf pondweed and Eurasian watermilfoil. Pondweed grows rapidly in spring and early summer, but dies off by mid-July, creating huge floating mats of dead plants. Milfoil dominates for the remainder of the year. Both species grow to the surface and are often covered with filamentous algae, locally called "moss." The deep weedline for both, 7 to 9 feet in the murky Southern Basin and 12 feet in the Northern, are the prime fish-holding cover of Chautauqua Lake.

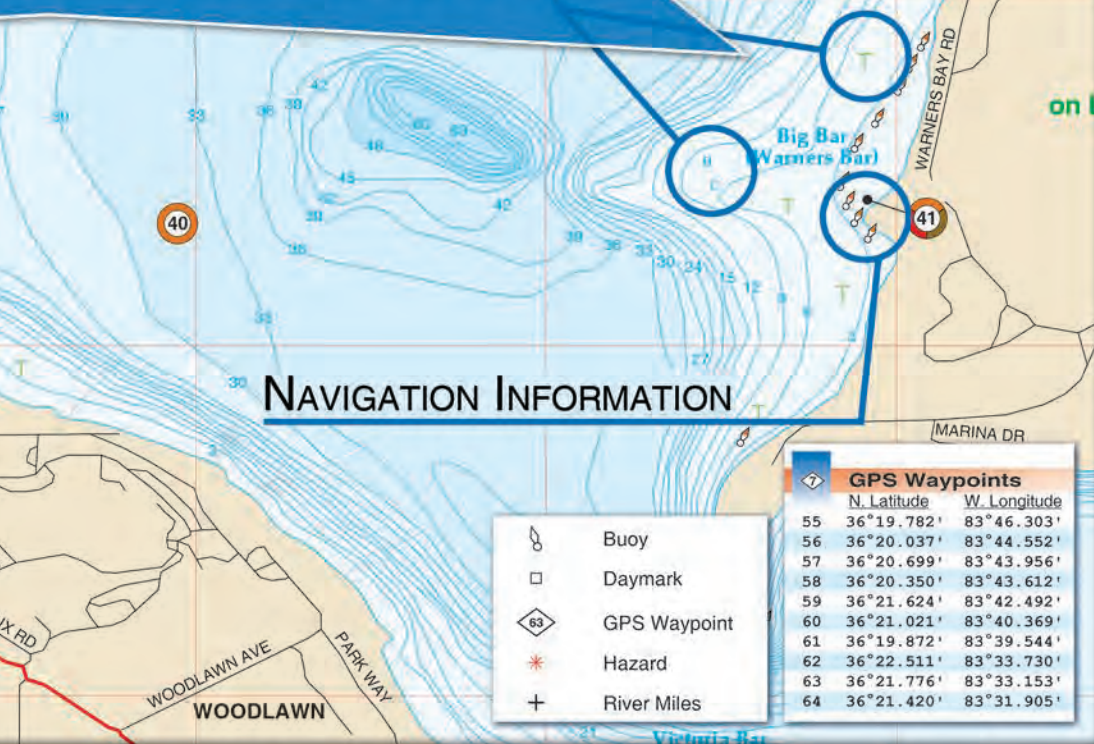
## WATER BODY DETAILS

# OWN GUIDE

## NAVIGATION INFORMATION

- Buoy
- Daymark
- GPS Waypoint
- Hazard
- River Miles

GPS Waypoints		
	N. Latitude	W. Longitude
55	36°19.782'	83°46.303'
56	36°20.037'	83°44.552'
57	36°20.699'	83°43.956'
58	36°20.350'	83°43.612'
59	36°21.624'	83°42.492'
60	36°21.021'	83°40.369'
61	36°19.872'	83°39.544'
62	36°22.511'	83°33.730'
63	36°21.776'	83°33.153'
64	36°21.420'	83°31.905'





# Fishing Hot Spots<sup>®</sup>

## TABLE OF CONTENTS

### ACCESSORIES

4



### BOOKS

4



### CUSTOM FISHING MAPS

7



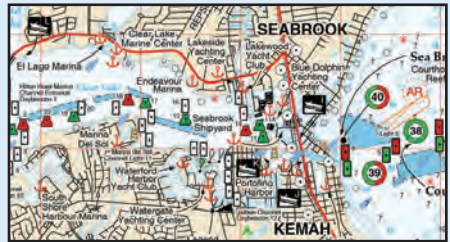
### PRINTED FISHING MAPS AND CHARTS

ALABAMA	4
ARIZONA	4
ARKANSAS	4
CALIFORNIA	4
CONNECTICUT	4
FLORIDA	4,5
GEORGIA	5
IDAHO	5
ILLINOIS	5,6
INDIANA	6
IOWA	6

KANSAS	6
KENTUCKY	6
LOUISIANA	6
MAINE	6
MARYLAND	9
MASSACHUSETTS	9



MICHIGAN	9
MINNESOTA	9
MISSISSIPPI	9
MISSOURI	10
NEVADA	10
NEW HAMPSHIRE	10
NEW JERSEY	10
NEW YORK	10
NORTH CAROLINA	10
NORTH DAKOTA	11
OHIO	11
OKLAHOMA	11
ONTARIO	11
PENNSYLVANIA	11
SOUTH CAROLINA	11
SOUTH DAKOTA	11
TENNESSEE	11
TEXAS	11,12



VERMONT	12
VIRGINIA	12
WASHINGTON	12
WISCONSIN	12,13

# America's Preferred Fishing Map

## ACCESSORIES / BOOKS



R101.....36" Fish N' Ruler



R102.....60" Fish N' Ruler



R111.....HooRag Head Wrap



R105.....Map Case



B143.....Catch Fish With Maps



B144.....GPS Coordinate Logbook

## PRINTED FISHING MAPS AND CHARTS

### ALABAMA

- L393 AL Eufaula (Walter F. George Reservoir)
- L336 AL Guntersville
- L338 AL Logan Martin Lake
- L337 AL Pickwick Lake
- L470 AL Weiss Lake
- L506 AL West Point Lake
- L471 AL Wheeler Lake
- L339 AL Wilson Lake

### ARIZONA

- L901 AZ Lake Mead

### ARKANSAS

- L173 AR Beaver Lake
- L171 AR Bull Shoals - East - Bull Shoals Dam to Hwy 125
- L172 AR Bull Shoals - West - Hwy 125 to Taneycomo Dam
- A119 AR Dardanelle
- L701 AR DeGray
- A121 AR Greers Ferry Lake
- A123 AR Millwood Lake
- L174 AR Norfork Lake
- A124 AR Ouachita

### CALIFORNIA

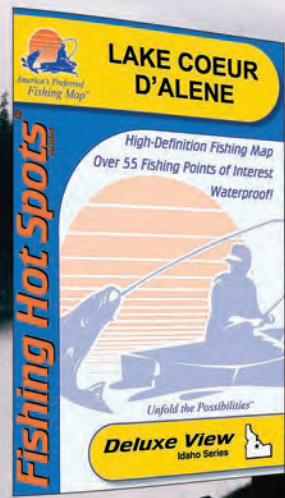
- A126 CA Berryessa
- A132 CA Casitas Lake
- A134 CA Clear Lake *Lake Co.*
- A135 CA Folsom Lake
- A136 CA Isabella
- A137 CA Millerton Lake
- A139 CA Piru
- A142 CA Shasta

### CONNECTICUT

- A158 CT Candlewood Lake
- A161 CT Lillinonah

### FLORIDA

- FL0101 FL Key West
- FL0103 FL Marathon - Seven Mile Bridge to Conch Key
- FL0104 FL Islamorada - Including Flamingo and Florida Bay
- FL0105 FL Key Largo - Plantation Key to Card Sound
- FL0106 FL Biscayne Bay - Card Sound to Miami
- FL0108 FL Ft. Lauderdale - Port Everglades to Boynton Beach
- FL0111 FL 10000 Islands - Chokoloskee to Rookery Bay
- FL0113 FL Fort Myers - Estero Bay to Pine Island Sound
- FL0114 FL Boca Grande/Charlotte Harbor - Lemon Bay to Cayo Costa
- FL0118 FL Melbourne - Sebastian Inlet to Lower Banana River
- FL0119 FL Cape Canaveral - Bald Pate Creek to Banana River
- FL0121 FL Daytona Beach - South Daytona to Palm Coast
- FL0122 FL St. Augustine - Palm Coast to South Ponte Vedra Beach



- FL0124 FL St. Johns River - Fuller Warren Bridge to St Johns Inlet
- FL0125 FL Jacksonville - Ponte Vedra to Nassau Sound
- FL0127 FL Sarasota - Lemon Bay to Sarasota Bay
- FL0128 FL Tampa Bay
- FL0129 FL St. Petersburg - Passage Key Inlet to Clearwater Pass
- FL0130 FL Tarpon Springs - Clearwater Pass to Bayport
- FL0131 FL Homosassa - Bayport to Withlacoochee Bay
- FL0132 FL Cedar Keys - Waccasassa Bay to Shired Island
- FL0133 FL Ochlockonee - St. George Sound to Big Redfish Pt.
- FL0134 FL Apalachicola - Indian Pass to East Pass
- FL0135 FL Port Saint Joe - St Andrew Pass to Indian Pass
- FL0136 FL Panama City - St Andrew Bay to St. Andrew Sound
- FL0137 FL Ft. Walton Beach - Including Choctawhatchee Bay
- FL0138 FL Pensacola Bay - Including Santa Rosa Sound
- L266 FL East Lake Tohopekaliga
- L257 FL George
- L263 FL Harris Chain of Lakes
- L256 FL Kissimmee
- L255 FL Okeechobee
- L254 FL Orange & Lochloosa
- L265 FL Rodman Reservoir
- L260 FL South St. John's River Georgetown to Rice Creek
- L258 FL North St. John's River Magnolia Point to Jacksonville
- L259 FL Central St. John's River Rice Creek to Green Cove
- L268 FL Talquin
- L267 FL Tohopekaliga
- L264 FL Winter Haven Chain

## GEORGIA

- L392 GA Allatoona Lake
- L650 GA Clarks Hill Lake (J. Strom Thurmond Reservoir)
- L393 GA Eufaula (Walter F. George Reservoir)
- L394 GA Hartwell - East - Hartwell Dam to Keowee Dam
- L395 GA Hartwell - West - Beaverdam Creek to Hwy 123 bridge
- L508 GA Oconee
- L649 GA Russell
- L390 GA Sidney Lanier-North of Browns Bridge
- L391 GA Sidney Lanier-South Dam to Browns Bridge
- L507 GA Sinclair
- L506 GA West Point Lake

## IDAHO

- L771 ID Coeur d'Alene
- L773 ID Pend Oreille

## ILLINOIS

- M365 IL Braidwood Lake
- L181 IL Carlyle Lake
- G184 IL Cedar Lake
- L182 IL Clinton Lake Illinois
- M361 IL Crab Orchard Lake
- G185 IL Devils Kitchen Lake
- L183 IL Fox Chain-North
- L184 IL Fox Chain-South
- G221 IL George Illinois
- M216 IL Heidecke Collins Lake
- M352 IL Illinois River - Starved Rock to Hennepin
- M366 IL Kankakee River - IL/IN Line to Illinois River
- L185 IL Kinkaid Lake
- M360 IL Lake Of Egypt
- G186 IL Little Grassy Lake
- G212 IL Mill Creek Newmans Lake
- M265 IL Mississippi River - Pool 13 Fulton, IL to Bellevue, IA

# America's Preferred Fishing Map

- L729 IL Mississippi River - Pool 21 Canton, MO to Quincy, IL
- M358 IL Mississippi River - Pool 26 Winfield, MO to Alton, IL
- G187 IL Otter Lake
- L186 IL Rend Lake
- M367 IL Rock River - Rockton, IL to Oregon Dam
- M357 IL Sangchris Lake
- M217 IL Shabbona Lake
- L187 IL Shelbyville
- G188 IL Springfield Lake

## INDIANA

- G189 IN Bass Lake
- L191 IN Brookville Lake
- G190 IN Freeman
- G191 IN Manitou
- G192 IN Maxinkuckee Lake
- L192 IN Monroe Lake
- L193 IN Patoka Lake
- G193 IN Shafer
- G194 IN Wawasee
- G211 IN Willow Slough Lake (J. C. Murphey Lake)

## IOWA

- G180 IA Coralville Reservoir
- L734 IA Mississippi River - Pool 9
- L731 IA Mississippi River - Pool 10
- M265 IA Mississippi River - Pool 13 Fulton, IL to Bellevue, IA
- G220 IA Odessa
- M261 IA Okoboji Lakes-East/West
- G213 IA Pleasant Creek Lake
- M264 IA Rathbun Lake
- M263 IA Saylorville-Big Creek Lakes
- M260 IA Spirit Lake
- G183 IA Storm Lake

## KANSAS

- M384 KS Clinton Lake
- M385 KS Hillsdale Lake
- M388 KS Milford
- M389 KS Melverne
- M387 KS Perry Lake
- M390 KS Pomona

## KENTUCKY

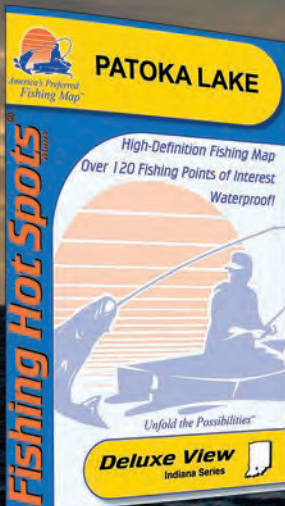
- L112 KY Barkley-North Barkley Dam to Hwy 68/80 Bridge
- L113 KY Barkley-South Hwy 68 Bridge to Dover, TN
- L441 KY Barren River Lake
- L442 KY Cave Run Lake
- L443 KY Cumberland-East Wolf Creek to Burnside
- L444 KY Cumberland-West Dam to Wolf Creek
- L119 KY Dale Hollow Lake
- L445 KY Green River Lake
- L121 KY Kentucky Lake-Central Blood River to Big Sandy
- L120 KY Kentucky Lake-North Kentucky Dam to KY/TN Line
- L111 KY Laurel River Lake
- L114 KY Nolin River Lake
- L115 KY Rough River Lake
- L110 KY Taylorsville Lake

## LOUISIANA

- A437 LA Toledo Bend - North - Patroon Bay to Logansport
- A438 LA Toledo Bend -South - Dam to Patroon Bay

## MAINE

- G402 ME Annabessacook Lake
- G447 ME Big Indian Pond
- G412 ME Cobbossecontee Lake
- G407 ME Embden Pond
- G410 ME Great Pond
- G411 ME Kezar Lake
- G440 ME Little Sebago Lake
- G415 ME Long Lake / Brandy Pond
- G418 ME Megunticook Lake
- L902 ME Moosehead Lake
- G421 ME Mooselookmeguntic Lake
- G422 ME North Pond
- G424 ME Pemaquid Pond
- G426 ME Pleasant Pond
- G446 ME Portage Lake
- G427 ME Pushaw Lake
- G400 ME Rangeley Lake
- G428 ME Richardson Lake



# Fishing Hot Spots®

## CUSTOM FISHING MAPS FOR YOU

Fishing Hot Spots offers the option to customize your fishing experience. Customization options include, but are not limited to, cropping a map to focus on a specific bay or section and splicing together two maps of the same body of water to create one complete fishing map.

### CUSTOMIZATION EXAMPLES

- Splicing  
Combining of multiple maps
- Cropping  
Enhanced views of map sections
- Personalization  
Add your name or location to your map
- Branding  
Have your company name, tournament or event added



Have other ideas? Contact our team to get started.



**SPLICING**



**CROPPING**



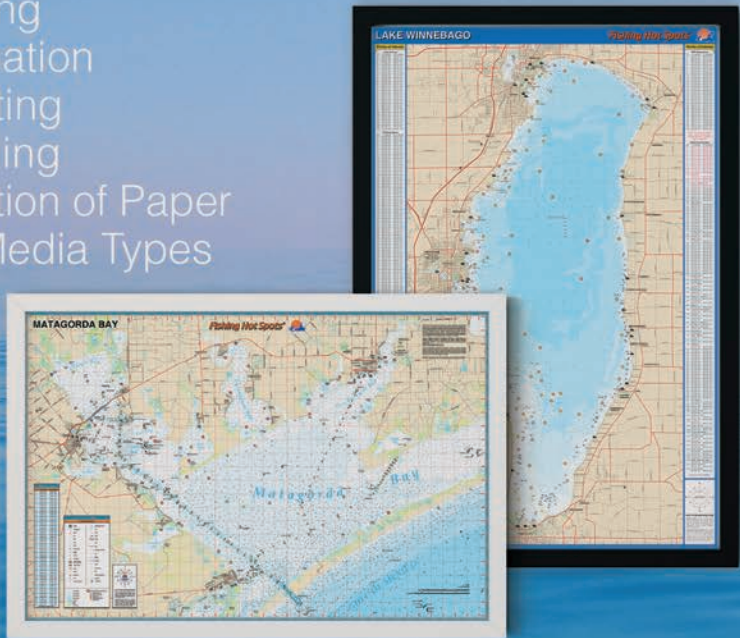
# America's Preferred Fishing Map

## WALL ART

Turn your favorite Fishing Hot Spots map into a special decoration for your wall! Choose from our collection of maps and finishes to start decorating.

### FINISH OPTIONS

- Framing
- Lamination
- Mounting
- Branding
- Selection of Paper and Media Types



### NEXT STEP TO CUSTOMIZATION

Email our team at  
[fishinghotspots@eastview.com](mailto:fishinghotspots@eastview.com)  
or call 1-800-ALL-MAPS  
to receive a quote for your customized  
fishing map.

Join our mailing list for 10% off your order and  
to stay up-to-date with current promotions.

- L900 ME Sebago Lake
- G429 ME Sebasticook Lake
- G431 ME Sheepscot Lake
- G434 ME Thompson Lake
- G435 ME Threemile Pond
- G436 ME Unity Pond (Lake Winnecook)
- G437 ME Webb Lake
- G438 ME Wesserunsett Lake
- G439 ME West Grand Lake

## MARYLAND

- MD0101 MD Middle Chesapeake Bay-Pocomoke Sound to Patuxent River
- MD0102 MD Upper Chesapeake Bay-Cove Point to Annapolis
- MD0103 MD Upper Chesapeake Bay-Annapolis to Susquehannah River

## MASSACHUSETTS

- MA0103 MA Cape Cod Bay\*

## MICHIGAN

- M305 MI Big Bay de Noc Lake Michigan
- G217 MI Cadillac
- G113 MI Crooked Lake
- L131 MI Detroit River
- L127 MI Erie - Western Basin (1 of 6)
- M200 MI Gogebic
- M312 MI Grand River Lk Michigan to Eastmanville & Spring Lk
- M306 MI Higgins Lake
- M307 MI Houghton Lake
- M142 WI Lac Vieux Desert
- L128 WI Little Bay De Noc
- G218 MI Mitchell
- M302 MI Mullett & Burt Lakes
- M303 MI Muskegon Lake
- G141 MI Ottawa Lake
- L129 MI Saginaw Bay
- L130 MI St. Clair/St. Clair River
- G219 MI St. Helen
- G140 MI Stanley Lake
- G179 MI Wixom Lake

## MINNESOTA

- M229 MN Alexandria Chain (Le Homme Dieu Chain)
- G152 MN Bald Eagle Lake
- G160 MN Big Marine Lake
- G214 MN Big Stone Lake
- L137 MN Cass Lake/Pike Bay
- G162 MN Clearwater Lake
- M221 MN Gull Lake *Crow Wing/Cass Co.*
- G206 MN Independence
- G209 MN Island Lake Reservoir-East/West
- L138 MN Kabetogama
- Q272 MN Lake of the Woods-SE incl. Sioux Narrows/Nestor Falls (3 of 4)
- Q273 MN Lake of the Woods-SW incl. Big/Little Traverse Bay (4 of 4)
- L139 MN Leech Lake
- G207 MN Medicine Lake
- L140 MN Mille Lacs
- G170 MN Milona Lake
- L141 MN Minnetonka
- G171 MN Minnewaska Lake
- M245 MN Mississippi River - Pool 4 Red Wing, MN to Alma, WI (incl. Lake Pepin)

- L730 MN Mississippi River - Pool 5 and 5a
- L732 MN Mississippi River - Pool 7 (incl. Lake Onalaska)
- L733 MN Mississippi River - Pool 8
- L734 MN Mississippi River - Pool 9
- M391 MN Namakan
- G156 MN North Center Lake - Chisago Chain
- G154 MN North Lindstrom Lake - Chisago Chain
- G172 MN North Long Lake
- M243 MN Osakis
- L145 MN Pelican Lake @ Orr *St. Louis Co.*
- G173 MN Pelican Lake *Grant Co*
- G174 MN Prior Lake-Upper/Lower
- Q274 MN Rainy Lake - North - Redgut Bay Manitou & Sound NE/NW Bays (1 of 2)
- Q275 MN Rainy Lake - South - Includes: Black Bay, Big Island, Swell Bay, & Seine Bay (2 of 2)
- M392 MN Sand Point, Crane and Little Vermilion Lakes
- M230 MN St. Croix River - Prescott, WI to Stillwater, MN
- M231 MN St. Croix River - Stillwater, MN to St. Croix Falls, WI
- L147 MN Vermilion
- G176 MN Waconia
- G257 MN White Bear Lake
- L148 MN Whitefish Chain
- L149 MN Winnibigoshish
- M241 MN Woman Lake Chain

## MISSISSIPPI

- A267 MS Enid Lake
- A268 MS Grenada Lake
- A269 MS Ross Barnett Reservoir
- A270 MS Sardis Lake



On the water, anglers can cross-reference their printed maps with their GPS units to easily navigate to their desired fishing hole.

# America's Preferred Fishing Map

## MISSOURI

- L171 MO Bull Shoals - East - Bull Shoals Dam to Hwy 125
- L172 MO Bull Shoals - West - Hwy 125 to Taneycomo Dam
- L160 MO Lake of the Ozarks - NE Milemarker 17 to Bagnell Dam
- L159 MO Lake of the Ozarks - SE Hurricane Deck to Milemarker 17
- L158 MO Lake of the Ozarks - W Truman Dam to Hurricane Deck Bridge
- L157 MO Mark Twain Lake
- L729 MO Mississippi River - Pool 21 Canton, MO to Quincy, IL
- M358 MO Mississippi River - Pool 26 Winfield, MO to Alton, IL
- L161 MO Pomme de Terre Lake
- L165 MO Smithville Lake
- L162 MO Stockton Lake
- L155 MO Table Rock Lake - East - Table Rock Dam to James River
- L156 MO Table Rock Lake - West - James River Mouth to Beaver Dam
- L163 MO Truman Reservoir - North North of Hwy 7
- L164 MO Truman Reservoir - South South of Hwy 7
- L166 MO Wappapello

## NEVADA

- L901 NV Lake Mead

## NEW HAMPSHIRE

- L903 NH Winnepesaukee

## NEW JERSEY

- A303 NJ Greenwood Lake
- A304 NJ Hopatcong
- NJ0101 NJ Cape May - Cape May to Atlantic City
- NJ0103 NJ Barnegat - Barnegat Inlet to Deal
- NJ0104 NJ New York Bight - Raritan Bay to Atlantic Ocean

## NEW YORK

- A369 NY Allegheny Reservoir Kinzua
- S454 NY Black Lake
- S455 NY Cayuga Lake
- S457 NY Champlain - Central South Hero to Cedar Beach
- S456 NY Champlain - North Quebec Waters to South Hero
- S458 NY Champlain - South Cedar Beach to Whitehall
- S491 NY Chautauqua Lake
- M484 NY Erie - Eastern Basin
- M485 NY Erie - Eastern Basin - Sturgeon Point - Point Abino Buffalo, NY to Fort Erie, ONT (6 of 6)
- S487 NY George
- M488 NY Hudson River - North - Kingston to Coxsackie

- M489 NY Hudson River - South - West Point to Kingston
- L743 NY Keuka
- L742 NY Niagara River Lower
- L741 NY Niagara River Upper
- S490 NY Oneida Lake
- L747 NY Onondaga
- M493 NY Ontario - Chaumont, Henderson, Black River Bays (7 of 7)
- M497 NY Ontario - Oswego Area (5 of 7)
- M492 NY Ontario - Stony Point to St. Lawrence River (6 of 7)
- L752 NY Ontario - Western Basin - Niagara Shoal (1 of 7)
- L754 NY Ontario - Western Basin - Point Breeze (2 of 7)
- M499 NY Ontario - South Central Wayne Co (4 of 7).
- M475 NY Ontario - South Central Monroe Co (3 of 7)
- L744 NY Owasco
- L749 NY Saranac
- L748 NY Saratoga
- S459 NY Seneca Lake
- L746 NY Skaneateles
- S278 NY St Lawrence River - C - 1000 Is. Howe Is to Wellesley Is
- S279 NY St Lawrence River - E - 1000 Is. Wesslesley Is to Chippewa Bay
- S277 NY St Lawrence River - W - 1000 Is - Lake Ontario to Howe Island
- L751 NY Tupper
- NY0101 NY Long Island South - Jamaica Bay to Great South Bay\*
- NY0102 NY Fire Island Inshore - Islip to Hampton Bays\*
- NY0103 NY Long Island Sound East - Montauk, NJ to Madison CT\*
- NY0106 NY Block Island Sound - Montauk and Block Island\*

## NORTH CAROLINA

- A312 NC B. Everett Jordan Lake
- A313 NC Falls Lake
- A314 NC Gaston
- A315 NC High Rock Lake
- A463 NC Kerr Reservoir Buggs Island-East
- A464 NC Kerr Reservoir Buggs Island-West
- A316 NC Norman
- AL850 NC Wylie
- NC0101 NC Long Bay-Sunset Beach to Cape Fear
- NC0104 NC Cape Lookout-Bogue Sound to Drum Inlet Inshore



**NORTH DAKOTA**

- L708 ND Devils Lake
- L792 Lake Sakakawea - Deep Water Wildlife Area to Garrison Dam
- L791 Lake Sakakawea - Sand Creek Bay to Deep Water Wildlife Area

**OHIO**

- M291 OH Erie - Bass Islands Area (2 of 6)
- L293 OH Erie - Central Basin - Ashtabula, OH to NY State Line (4 of 6)
- L295 OH Erie - Central Basin - Ruggles Beach to Geneva (3 of 6)
- L127 OH Erie - Western Basin (1 of 6)
- M376 OH Mosquito Lake (Mosquito Creek Reservoir)
- L122 OH Pymatuning Lake

**OKLAHOMA**

- L702 OK Broken Bow
- A343 OK Eufaula - North - North of Hwy. 9 Bridge
- A344 OK Eufaula - South - South of Hwy. 9 Bridge
- A345 OK Fort Gibson Lake
- A346 OK Grand Lake O' the Cherokees
- A347 OK Hudson
- L706 OK Kerr
- L724 OK Keystone
- A349 OK Oolagah Lake
- A351 OK Skiatook Lake
- A352 OK Tenkiller Ferry Lake
- A353 OK Texoma
- L704 OK Thunderbird

**ONTARIO**

- M473 ONT Bay of Quinte - E - Telegraph Narrows to Upper Gap\*
- M498 ONT Bay of Quinte - W - Trenton to Telegraph Narrows\*
- Q280 ONT Eagle Lake Ontario
- M485 ONT Erie - Eastern Basin Sturgeon Point-Point Abino Buffalo, NY to Fort Erie, ONT (6 of 6)
- L127 ONT Erie - Western Basin (1 of 6)
- Q270 ONT Lake of the Woods-NE incl. Kenora/Witch/Bigstone Bays (1 of 4)
- Q271 ONT Lake of the Woods-NW incl. Clearwater/Portage Narrows (2 of 4)
- Q272 ONT Lake of the Woods-SE incl. Sioux Narrows/Nestor Falls (3 of 4)
- Q273 ONT Lake of the Woods-SW incl. Big/Little Traverse Bay (4 of 4)
- L742 ONT Niagara River Lower
- L741 ONT Niagara River Upper
- Q274 ONT Rainy Lake - North - Redgut Bay Manitou & Sound NE/NW bays (1 of 2)
- Q275 ONT Rainy Lake - South - Includes: Black Bay, Big Island, Swell Bay, & Seine Bay (2 of 2)
- L130 ONT St. Clair/St. Clair River
- S278 ONT St Lawrence River - C - 1000 Island-Howe Is to Wellesley Island
- S279 ONT St Lawrence River - E - 1000 Island-Wessesley Island to Chippewa Bay
- S277 ONT St Lawrence River - W - 1000 Island-Lake Ontario to Howe Island

**PENNSYLVANIA**

- A369 PA Allegheny Reservoir Kinzua
- A370 PA Arthur
- M484 PA Erie-Eastern Basin Erie, PA to Sturgeon Point, NY (5 of 6)
- A372 PA Marburg
- L122 PA Pymatuning Lake
- L399 PA Raystown
- A374 PA Shenango River Lake
- A375 PA Wallenpaupack
- A376 PA Wilhelm

**SOUTH CAROLINA**

- L650 SC Clarks Hill Lake (J. Strom Thurmond Reservoir)
- L659 SC Greenwood
- L394 SC Hartwell - East - Hartwell Dam to Keowee Dam
- L395 SC Hartwell - West - Beaverdam Creek to Hwy 123 bridge
- L654 SC Marion (Santee Cooper)
- L656 SC Moultrie (Santee Cooper)
- L655 SC Murray
- L649 SC Russell
- AL850 SC Wylie

**SOUTH DAKOTA**

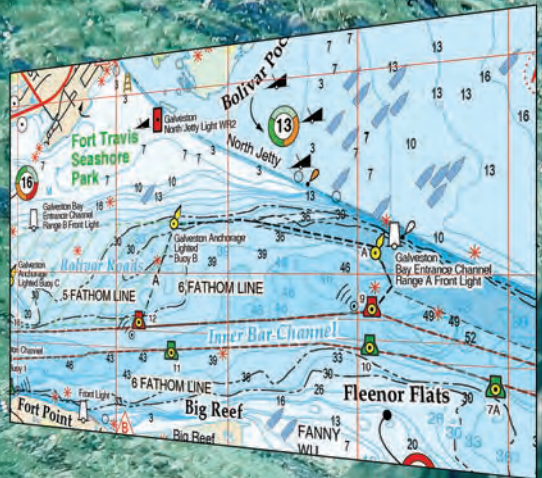
- G214 SD Big Stone Lake

**TENNESSEE**

- L112 TN Barkley - North - Barkley Dam to Hwy 68/80 Bridge
- L113 TN Barkley - South - Hwy 68 Bridge to Dover, TN
- A400 TN Center Hill Lake
- A401 TN Cherokee Lake
- A402 TN Chickamauga
- L119 TN Dale Hollow Lake
- A404 TN Douglas Lake
- L736 TN Ft Loudon
- A408 TN J.Percy Priest Lake
- L121 KY Kentucky Lake-Central Blood River to Big Sandy
- L120 KY Kentucky Lake-North Kentucky Dam to KY/TN Line
- A405 TN Nickajack Lake
- A406 TN Norris Lake
- A407 TN Old Hickory Lake
- A409 TN Reelfoot Lake
- L735 TN Tellico
- A410 TN Tims Ford Lake
- A411 TN Watts Bar Lake

**TEXAS**

- TX0104 TX Baffin Bay
- TX0106 TX Corpus Christi Bay
- TX0107 TX Port Aransas
- TX0110 TX Matagorda Bay
- TX0113 TX West Galveston Bay
- TX0114 TX Galveston Bay
- TX0115 TX East Galveston Bay
- TX0116 TX Sabine Lake
- L721 TX Amistad
- L716 TX Belton
- L720 TX Bob Sandlin, Monticello & Cypress Springs
- L719 TX Caddo
- L718 TX Canyon
- A419 TX Cedar Creek Lake



- A420 TX Choke Canyon Reservoir
- A421 TX Conroe
- L709 TX Eagle Mountain
- A439 TX Fayette County Lake
- L726 TX Falcon
- A422 TX Fork Reservoir
- L722 TX Grapevine
- A440 TX Houston
- L711 TX Lake Buchanan & Inks Lake
- A424 TX Lake O' the Pines
- L723 TX Lavon
- L725 TX Lewisville
- A427 TX Livingston
- L712 TX Lyndon B Johnson & Marble Falls
- A429 TX O.H. Ivie Reservoir
- A430 TX Palestine
- A432 TX Ray Hubbard
- A433 TX Ray Roberts
- A434 TX Richland Chambers Lake
- A435 TX Sam Rayburn Reservoir
- L717 TX Stillhouse Hollow
- L710 TX Tawakoni
- A353 TX Texoma
- A437 TX Toledo Bend - North - Patrolon Bay to Logansport
- A438 TX Toledo Bend - South - Dam to Patrolon Bay
- L713 TX Travis
- L715 TX Whitney
- L714 TX Wright-Patman

## VERMONT

- S457 VT Champlain - Central South Hero to Cedar Beach
- S456 VT Champlain - North Quebec Waters to South Hero
- S458 VT Champlain - South Cedar Beach to Whitehall

## VIRGINIA

- A460 VA Anna
- A461 VA Chesdin
- A463 VA Kerr Reservoir Buggs Island-East
- A464 VA Kerr Reservoir Buggs Island-West
- L466 VA Smith Mountain Lake

## WASHINGTON

- L770 WA Banks Lake
- L774 WA FDR North
- L776 WA FDR South
- L779 WA Moses Lake
- L778 WA Stevens
- L777 WA Tapps
- L772 WA Washington

## WISCONSIN

- G134 WI Arbutus *Jackson Co*
- G259 WI Balsam Lake *Polk Co*
- G272 WI Beulah Lake *Walworth Co*
- G104 WI Big & Little Arbor Vitae Lake *Vilas Co*
- G233 WI Big Cedar Lake *Washington Co*
- G205 WI Big Crawling Stone Lake *Vilas Co*
- M119 WI Big Green Lake
- G105 WI Big Muskellunge Lake *Vilas Co*
- G279 WI Big Sand Lake *Vilas Co*
- G177 WI Big Sissabagama *Sawyer Co.*
- G271 WI Blackhawk Lake *Iowa Co*
- G245 WI Bone Lake *Polk Co*
- G263 WI Boom Lake & Rhinelander Flowage *Oneida Co*
- G273 WI Browns Lake *Racine Co*
- G241 WI Buckatabon Lakes-Upper & Lower *Vilas Co*
- G239 WI Buffalo Lake *Marquette Co*
- G232 WI Butternut Lake *Forest Co.*
- G216 WI Butternut Lake *Price Co.*
- M135 WI Caldron Falls Flowage *Marinette Co*
- G109 WI Carrol Lake *Oneida Co*
- L246 WI Castle Rock Flowage *Juneau/Adams Co*
- L236 WI Chequamegon Bay-Lake Superior *Ashland/Bayfield Co*
- G246 WI Chequamegon Waters Flowage-Miller Dam Flowage *Taylor Co*
- G228 WI Chetac & Birch Lakes *Sawyer Co*
- M157 WI Chetek Chain *Barron Co*
- L238 WI Chippewa Flowage *Sawyer Co*

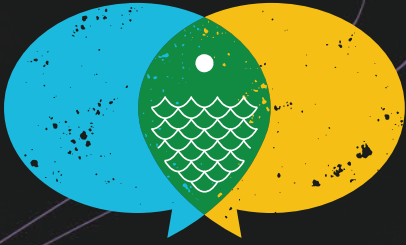
- G149 WI Crescent Lake *Oneida Co*  
 L767 WI Dairyland Flowage  
 G110 WI Dam Lake *Oneida Co*  
 M370 WI Delavan  
 M372 WI DuBay *Marathon/Portage Co*  
 L239 WI Eagle River Chain *Vilas Co*  
 G200 WI Fence Lake *Vilas Co*  
 G243 WI Flambeau Lake *Vilas Co*  
 G224 WI Fox Lake *Dodge Co*  
 G242 WI Franklin Lake *Forest Co*  
 L241 WI Geneva *Walworth Co*  
 G111 WI Gile Flowage *Iron Co*  
 G284 WI George *Oneida Co*  
 L237 WI Green Bay - South  
     Fox River to De Pere Dam  
 G282 WI Hancock Lake *Oneida Co*  
 M137 WI High Falls Reservoir  
     *Marinette Co*  
 M174 WI Holcombe Flowage  
     *Chippewa Co*  
 G262 WI Island/McCann Lakes *Rusk Co*  
 G285 WI Julia *Oneida Co*  
 G116 WI Katherine Lake *Oneida Co*  
 G225 WI Kentuck Lake *Vilas Co*  
 M105 WI Koshkonong/Rock River *Jefferson Co*  
 M177 WI Lac Courte Oreilles &  
     Grindstone *Sawyer Co*  
 M142 WI Lac Vieux Desert  
 G136 WI Little Green Lake *Green Lake Co*  
 G276 WI Little Muskego Lake *Waukesha Co*  
 G106 WI Little St Germain &  
     Big St. Germain  
 G265 WI Long Lake *Fond du Lac Co.*  
 M178 WI Long Lake *Washburn Co.*  
 G119 WI Lost Lake *Vilas Co*  
 G199 WI Lost Land Lake *Sawyer Co*  
 G251 WI Marsh-Miller Lake  
     *Chippewa Co*  
 M106 WI Mendota *Dane Co*  
 G240 WI Menomin *Dunn Co*  
 G266 WI Metonga *Forest Co*  
 L245 WI Minocqua/Kawaguesaga/Mid Lakes  
     *Oneida Co*  
 M245 WI Mississippi River-Pool 4 Red Wing, MN  
     to Alma, WI (incl. Lake Pepin)  
 L730 WI Mississippi River - Pool 5 and 5a  
 L732 WI Mississippi River - Pool 7 (incl. Lake  
     Onalaska)  
 L733 WI Mississippi River - Pool 8  
 L734 WI Mississippi River - Pool 9  
 L731 WI Mississippi River - Pool 10  
 G144 WI Mohawksin Lake *Lincoln Co*  
 L247 WI Moen Chain *Oneida Co*  
 M107 WI Monona *Dane Co*  
 G252 WI Moose Lake *Sawyer Co*  
 G235 WI Nagawicka *Waukesha Co*  
 M184 WI Namakagon *Bayfield Co*  
 M145 WI Nokomis *Lincoln Co*  
 G229 WI Noquebay *Marinette Co*  
 M154 WI North & South Twin Lakes *Vilas Co*  
 G236 WI Okauchee Lake *Waukesha Co*  
 G281 WI Oneida *Oneida Co*  
 G264 WI Owen *Bayfield Co*  
 M147 WI Pelican Lake *Oneida Co*  
 M126 WI Petenwell Flowage *Juneau/Adams Co*  
 L242 WI Pewaukee Lake *Waukesha Co*  
 G115 WI Pickerel Lake *Oneida Co.*  
 G237 WI Pike Lake *Washington Co*  
 G244 WI Pike/Round Chain *Price Co*  
 G122 WI Plum Lake *Vilas Co*  
 G131 WI Post Lakes-Upper/Lower *Lanlgade Co*  
 G253 WI Potato Lake *Rusk Co*  
 L243 WI Poygan/Winneconne/Butte  
     des Morts  
 G260 WI Puckaway Green *Lake Co*  
 G143 WI Red Cedar Lake *Barron Co*  
 G268 WI Ripley *Jefferson Co*  
 G238 WI Rock Lake *Jefferson Co*  
 G230 WI Round Lake *Sawyer Co*  
 G123 WI Sand Lake *Oneida Co.*  
 M149 WI Shawano Lake *Shawano Co*  
 G254 WI Shell Lake *Washburn Co*  
 G124 WI Shishebogama Lake *Vilas Co*  
 G274 WI Silver Lake *Kenosha Co*  
 G261 WI Spider Lake Chain *Sawyer Co*  
 G125 WI Squaw Lake *Oneida Co*  
 M230 WI St. Croix River - Prescott,  
     WI to Stillwater, MN  
 M231 WI St. Croix River - Stillwater,  
     MN to St. Croix Falls, WI  
 G126 WI Star Lake *Vilas Co*  
 L235 WI Sturgeon Bay-Lake  
     Michigan *Door Co*  
 G196 WI Tainter Lake *Dunn Co*  
 G197 WI Teal Lake/Teal River Flowage *Sawyer Co*  
 G128 WI Tenderfoot Lake *Vilas Co\**  
 G283 WI Thompson *Oneida Co*  
 M207 WI Three Lakes Chain-North  
     *Oneida Co*  
 M208 WI Three Lakes Chain-  
     South *Oneida Co*  
 G275 WI Tichigan Lake *Racine Co*  
 L244 WI Tomahawk *Oneida Co*  
 M152 WI Trout Lake *Vilas Co*  
 L240 WI Turtle-Flambeau Flowage  
     Includes Trude Lake *Iron Co*  
 G249 WI Upper Eau Claire Lake  
     *Bayfield Co*  
 G255 WI Wapogasset Lake *Polk Co*  
 G223 WI Waubesa & Kegonsa Lakes  
     *Dane Co*  
 G129 WI White Sand Lake *Vilas Co*  
 G250 WI Whitewater Lake  
     *Walworth Co*  
 M155 WI Willow Flowage *Oneida Co*  
 G269 WI Wind Lake *Racine Co*  
 L249 WI Winnebago *Winnebago Co*  
 M116 WI Wisconsin *Columbia Co*  
 M130 WI Wisconsin River-Below Dells Dam  
     *Columbia Co*  
 M375 WI Wisconsin River-Castle Rock  
     to Dells *Juneau/Adams Co*  
 M194 WI Wissota *Chippewa Co*  
 G256 WI Yellow Lake *Burnett Co*

\* Available while supplies last

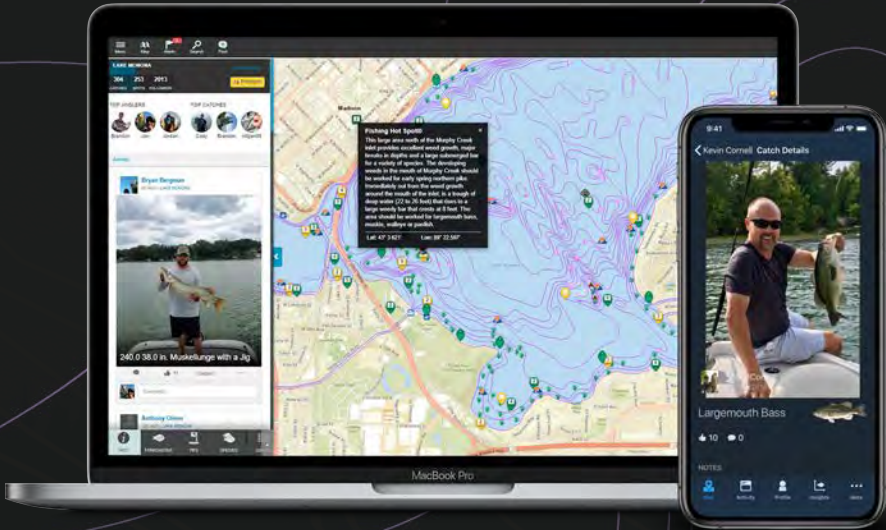




Look for **Fishing Hot Spots**® Maps on:



# FISHIDY



- 20,000+ Online Waterway Maps -
- Real-Time, Local Fishing Reports -
- Fishing Forecaster and Catch Log -

Create your **FREE** account at [www.fishidy.com/FHS](http://www.fishidy.com/FHS)



Available on the  
**App Store**



ANDROID APP ON

**Google™ play**

**East View Map Link**  
**2838 Vicksburg Lane North**  
**Plymouth, MN 55447**

**Find us at 45° 0' 44.161" N 93° 28' 53.768" W**

**[www.fishinghotspots.com](http://www.fishinghotspots.com)**

** Like us on Facebook**