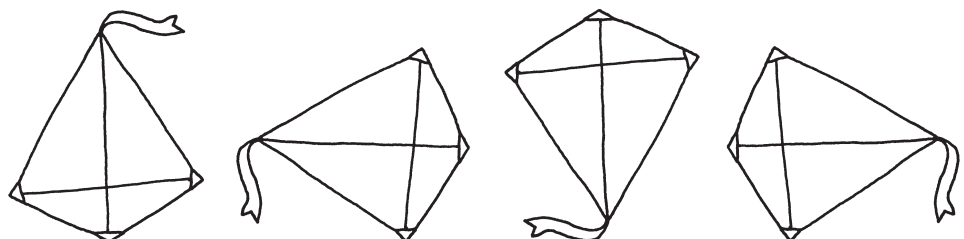
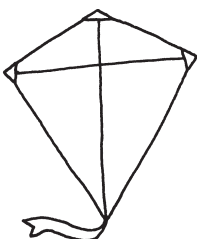
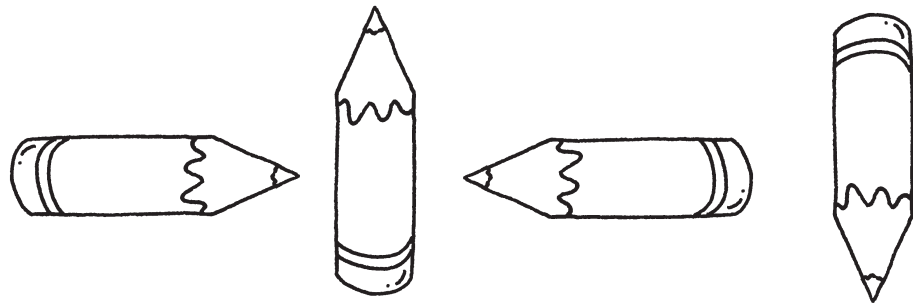
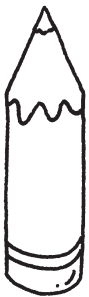
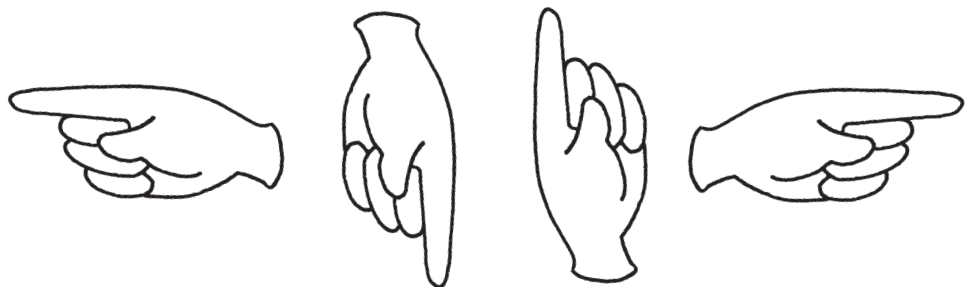
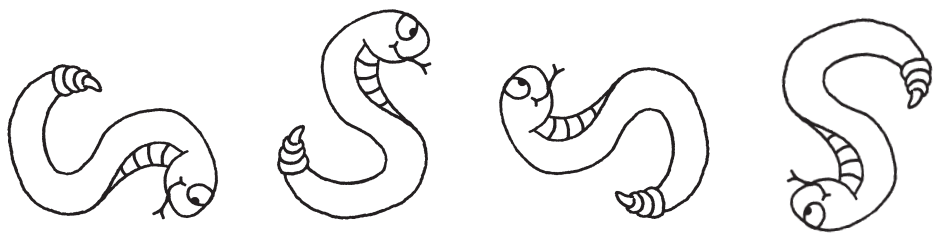
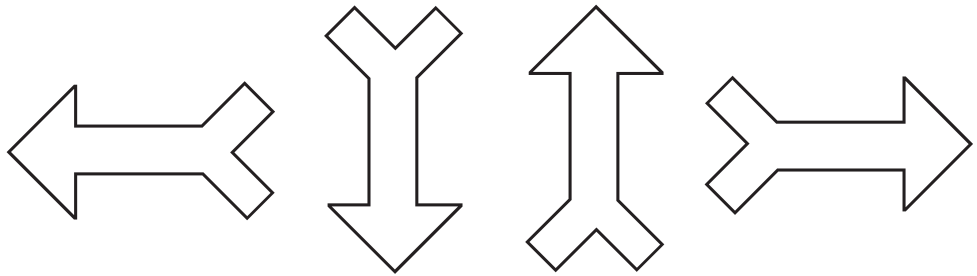
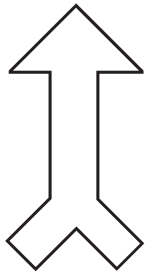


# Matching directions



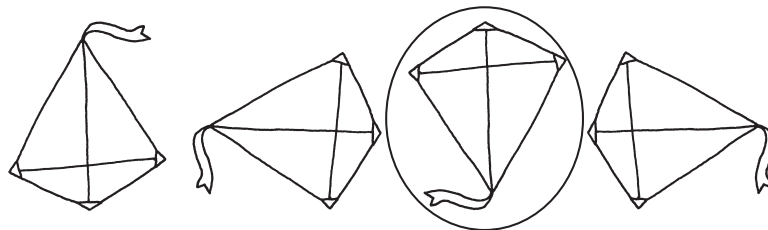
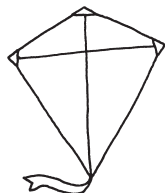
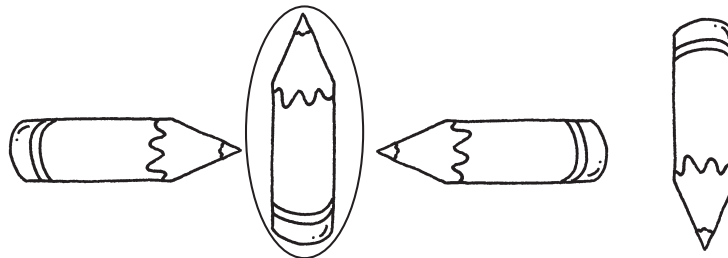
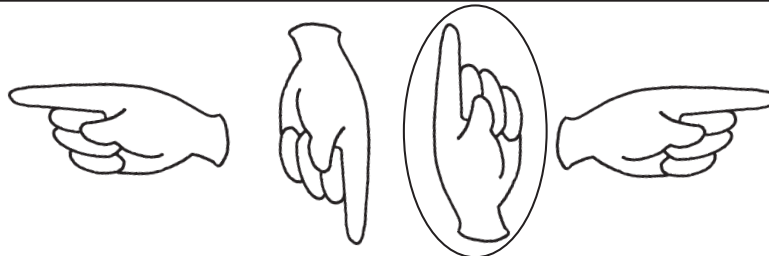
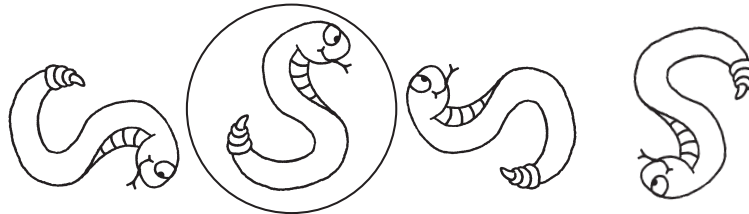
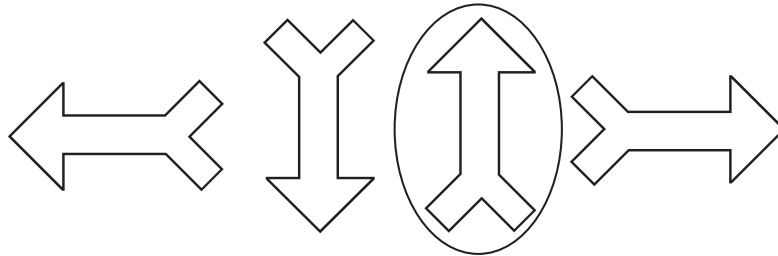
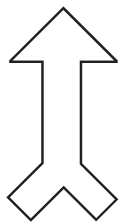
Look at the first picture on each line. Draw a circle around the picture that is pointing the **same** way.



# Matching directions



Look at the first picture on each line. Draw a circle around the picture that is pointing the **same** way.



Your child will need to be able to differentiate between the different directions that letters face as some are mirror images of others. For example, the letters *b* and *d* are mirror images of each other, and *u* and *n* are the inverse of each other. The activities on this page introduce familiar objects pointing in different directions. Ask your child to identify and draw a circle around the object that is pointing the same way as the first object on the left.