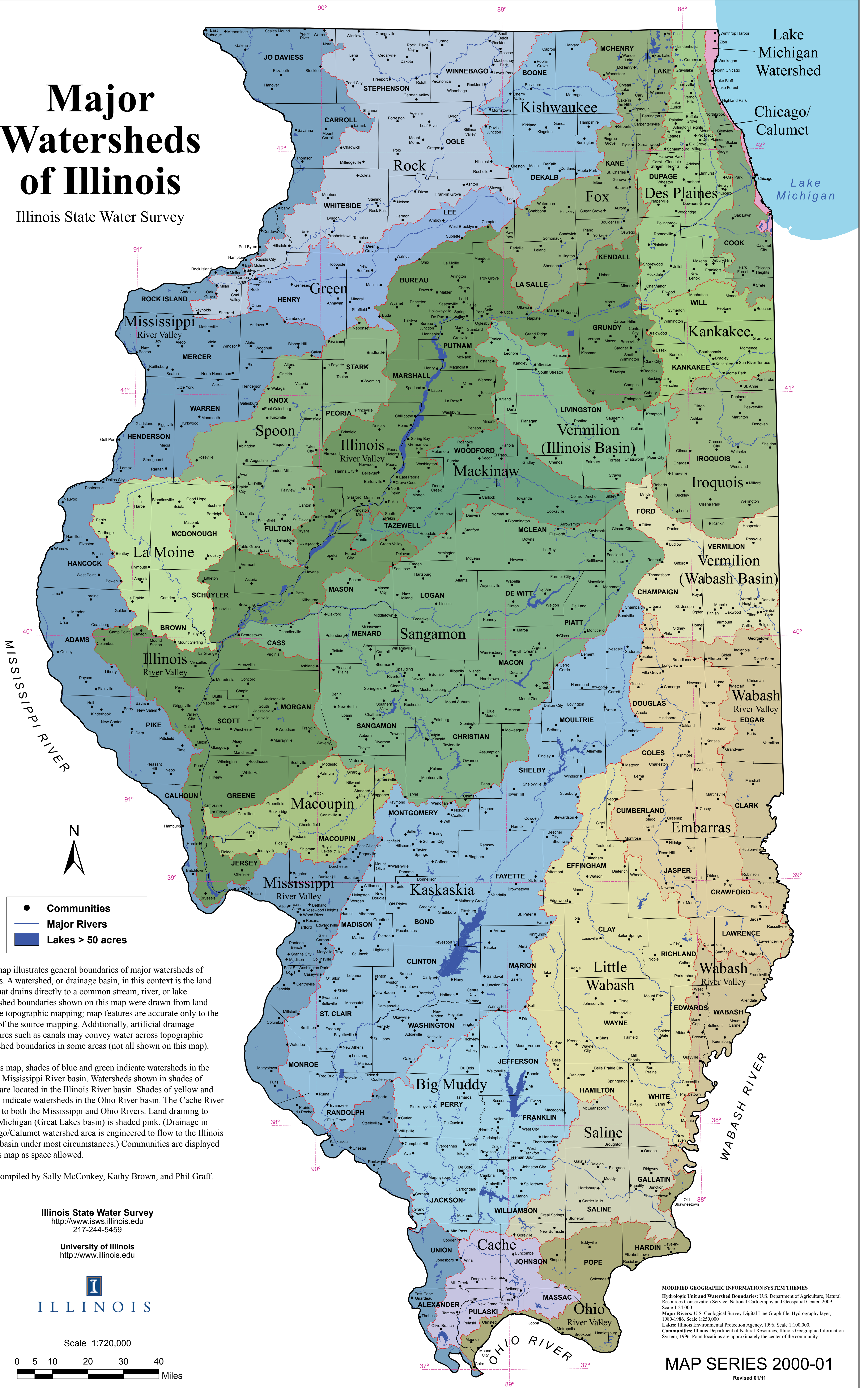


Major Watersheds of Illinois

Illinois State Water Survey



This map illustrates general boundaries of major watersheds of Illinois. A watershed, or drainage basin, in this context is the land area that drains directly to a common stream, river, or lake. Watershed boundaries shown on this map were drawn from land surface topographic mapping; map features are accurate only to the scale of the source mapping. Additionally, artificial drainage structures such as canals may convey water across topographic watershed boundaries in some areas (not all shown on this map).

On this map, shades of blue and green indicate watersheds in the Upper Mississippi River basin. Watersheds shown in shades of green are located in the Illinois River basin. Shades of yellow and brown indicate watersheds in the Ohio River basin. The Cache River drains to both the Mississippi and Ohio Rivers. Land draining to Lake Michigan (Great Lakes basin) is shaded pink. (Drainage in Chicago/Calumet watershed area is engineered to flow to the Illinois River basin under most circumstances.) Communities are displayed on this map as space allowed.

Map compiled by Sally McConkey, Kathy Brown, and Phil Graff.

Illinois State Water Survey
<http://www.isws.illinois.edu>
 217-244-5459

University of Illinois
<http://www.illinois.edu>



Scale 1:720,000



MODIFIED GEOGRAPHIC INFORMATION SYSTEM THEMES
 Hydrologic Unit and Watershed Boundaries: U.S. Department of Agriculture, Natural Resources Conservation Service, National Cartography and Geospatial Center, 2009. Scale 1:24,000.
 Major Rivers: U.S. Geological Survey Digital Line Graph file, Hydrography layer, 1980-1986. Scale 1:250,000.
 Lakes: Illinois Environmental Protection Agency, 1996. Scale 1:100,000.
 Communities: Illinois Department of Natural Resources, Illinois Geographic Information System, 1996. Point locations are approximately the center of the community.

MAP SERIES 2000-01

Revised 01/11