

HVR8HDBL-WF

Vandal-Resistant Heavy Duty 14-Gauge Bi-Level Barrier-Free Cooler

MOUNTING HEIGHT

Mounting height recommended 31 1/2" from basin to floor. May be mounted at any desired height. Check local codes.

MOUNTING INSTRUCTIONS

Mount trap and install service stop to supply line. Anchor hanger bracket securely to wall on all sides. Remove slip nut and gasket from trap and install on waste line tube. Hang cooler on bracket and engage waste line tube into trap

inlet. Centerline height of waste outlet will vary from floor line depending on mounting height. Install 3/8" supply tube to in-line strainer. Secure bottom of cooler to wall using holes provided.

Trap and service stop not included.

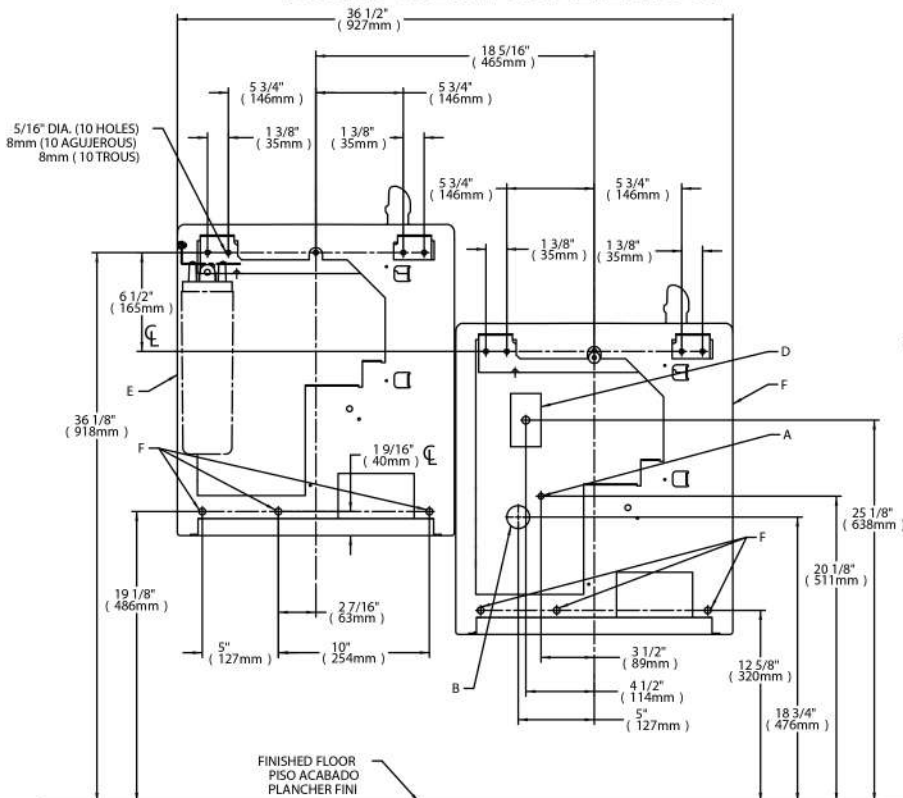
OPERATING PRESSURES:

Supply water - 105 psi maximum

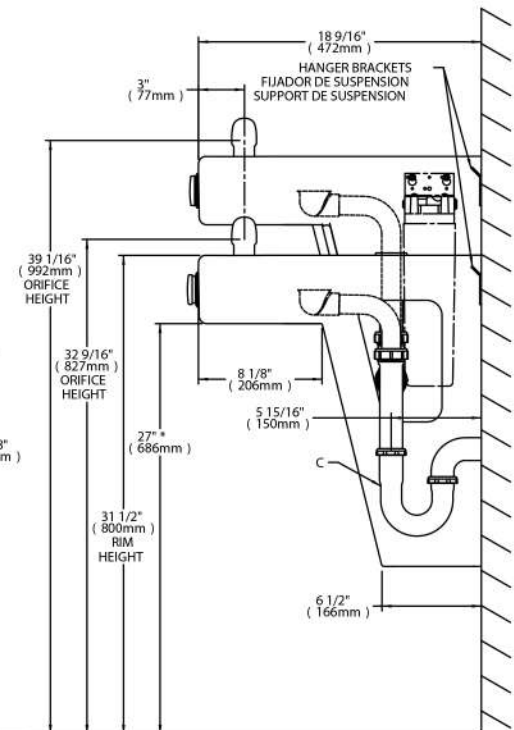
ELECTRICAL

115 Volt / 60 Hz units furnished with plug-in, 3 wire grounding type service cord. Standard 115 volt, 60 Hz, single phase. Install 115 volt receptacle rated at 15-amp minimum to receive 3-wire parallel blade grounding type male plug.

FRONT VIEW / WALL LAYOUT



SIDE VIEW



LEGEND:

- A = RECOMMENDED WATER SUPPLY LOCATION. SHUT OFF VALVE (NOT FURNISHED) TO ACCEPT 3/8" O.D. UNPLATED COPPER TUBE.
- B = RECOMMENDED LOCATION FOR WASTE OUTLET 1-1/2" O.D. DRAIN
- C = 1-1/2" TRAP NOT FURNISHED
- D = ELECTRICAL SUPPLY (3) WIRE RECESSED BOX
- E = INSURE PROPER VENTILATION BY MAINTAINING 6" (152 mm) (MIN.) CLEARANCE FROM CABINET LOUVERS TO WALL.
- F = 5/16 BOLT HOLES FOR FASTENING UNIT TO WALL

* Adult ADA requirement (shown) - 27" (686mm);
Child ADA requirement - 24" (608mm).

Adjust all other measurements accordingly.

Halsey Taylor