



ATV



UTV



SXS



GOLF

# 2016

WHEEL AND TIRE  
CATALOG



WHEELS



MADE IN USA



JOSH  
FREDERICK  
PHOTO: C.MCGUFFIN  
PHOTOGRAPHY



OVER 25 YEARS OF AWARD WINNING INNOVATION

[www.DWTRacing.com](http://www.DWTRacing.com)

1.800.Race-Rim

ABOUT US... In the early days of karting, our founder (3 time National Karting Champion) Douglas Henline found limitations in the wheel technology of the day. In his pursuit of performance, he devoted himself to designing and manufacturing a new breed of superior wheels. His passion, dedication and engineering skills led to the founding of Douglas Wheel in 1991. After 20 years of innovation, industry leadership and an impressive number of championships in a wide variety of motor sports, DWT continues to lead the way in wheel and tire technology.

Though rich with history, we are ever evolving by expanding our product lines, manufacturing processes and rigorous testing procedures. In our ongoing quest to keep building the best products possible, we have developed unique proprietary manufacturing processes. Each piece we produce goes through a series of state of the art processes to assure and maintain that revered DWT dependability and high quality.

**WE ARE PROUD TO BE CASTING OUR LITECAST WHEELS RIGHT HERE IN THE U.S.A.** This bold move away from devastating industry trends of overseas production has allowed us to help create much needed American jobs and help the economy get back on track. We hope you will join us and support American Jobs and Manufacturing. When you support DWT, you support the American economy, and more importantly, the American workforce.



## INDEX OF PAGES

### ATV WHEELS



A5	8"-10"	7
CHAMPION IN A BOX		9
G2	8"-10"	8
G2 jr	8"	8
G2DB	9"	8
ROK-OUT	10"	8
ROK'N LOCK	10"	8
SPORT BLUE .125	8"-13"	7
SPORT RED .190	8"-12"	7

### ATV TIRES



DOONZ	10"	21
MX V1, 2, 3 & 4 <b>NEW</b>	8" & 10"	16
XC V1, 2 & 3	9" & 10"	18
jr MX & XC	8" & 10"	20

### PARTS & ACCESSORIES

BEADLOCK RINGS	22
HATS	22
LUG NUTS	22
MUD PLUGS	22
NUT PLATE KITS	22
PATCHES	22
SHIRTS	22
STICKERS	22

### UTV/SXS WHEELS



STEALTH	12" & 14"	11
DIABLO	12" & 14"	13
DIABLO BEADLOCK	12"	13
NITRO	12"	12
ROK-OUT	12" & 14"	6
ROK'N LOCK	12" & 14"	6
SECTOR	12" & 14"	4
ULTIMATE SPORT	14"	5
ULTIMATE	12" & 14"	6

### UTV/SXS TIRES



DOONZ	12"	21
MOJAVE <b>NEW</b>	12" & 14"	14
MOAPA	12" & 14"	15

### TECHNICAL INFORMATION

BOLT PATTERN MEASUREMENT	23
TIRE MOUNTING	23
TIRE SIZE CONVERSION	23
TIRE SIZE READING	23
WHEEL DESCRIPTION	23
ABOUT US	2

### DWT PROPRIETARY TIRE RUBBER COMPOUND KEY



**HARD**

The most durable multi purpose tire compound offered. Designed to handle the harshest of terrains and entry level racing applications.



**MEDIUM**

Excellent combination of traction and durability. Compound designed for more grip to handle most terrains and closed course racing applications.



**SOFT**

Maximum grip compound for racing. Sandy and wet conditions. Specifically designed to grip as a wet track dries and becomes hard like blue-groove. Designed for closed course racing.



**NEW UTILITY TIRE FOR 2015!**

**MOJAVE**

RUN-FLAT & 8-PLY  
12" & 14"  
SEE PAGE 14

# ALUMILITE®

JARROD  
MCCLURE

PHOTO: HARLAN FOLEY  
ATVRIDERS.COM



**MADE IN THE U.S.A.**  
FOR NEARLY **25 YEARS**

RICK  
CECCO

PHOTO: KEN HILL  
PHOTOGRAPHY



## WE BUILT THIS.

Our Alumilite wheel line has allowed us to experience the American dream and support many fellow hardworking Americans for over 20 years. Since our humble beginnings in a small shop we've grown strong over the years through American ingenuity, hard work and much sacrifice. And without question we could not have done it without the support of every single customer. A testament to the American Dream through blood, sweat and tears can be seen in how far our ever advancing Alumilite wheel line has come. Our spun wheels continue to be on top and we strive to keep them there. Please join us in our support of creating and sustaining American jobs through domestic production.

AMERICAN INGENUITY

AMERICAN STRENGTH

AMERICAN HARD WORK

AMERICAN DREAMS

AMERICAN SUCCESS

AMERICAN LEGACY

AMERICAN WORKFORCE

AMERICAN PROSPERITY

AMERICA'S FUTURE

AMERICAN PRIDE

AMERICAN VALUES

AMERICAN LIFESTYLE



# SECTOR

12" & 14"

## TRULY REVOLUTIONARY 3-PIECE WHEEL

This awesome TRUE 3 piece wheel is fully serviceable and constructed of super strong lightweight heat treated 6061 .190 aluminum. All of our heat treatment is done in our factory, assuring a true and proper procedure. The SECTOR consists of two lightweight aluminum wheel halves which bolt to a stylish billet aluminum center. An air tight seal is formed by a strong rubber ring seated in a precision machined groove between each wheel half and the center.

Sector's revolutionary 3 piece design saves you money, space and time by allowing you to separately swap out any piece of the wheel. This allows one initial wheel for different kinds of riding. Imagine the offsets that can now be obtained with one initial wheel! The rolled lip version may transform from a trail wheel to a dune wheel by exchanging it's halves to get a narrow or wide offset.

It also allows easy "in the field" tire mounting. These amazing new wheels are available in DWT's signature "super hoop strength" Rolled Lip and Bead-Lock models. Our bead-lock models employ our exclusive riveted steel nut plate system which allows for quick and easy thread fix.

ALUMINUM



MADE IN USA



# SECTOR



INNER ROLLED LIP



DOUBLE ROLLED LIP (DBL IR SECTOR CTR)

ROLLED LIP WITH INTEGRAL BEADLOCK (RL IB SECTOR CTR)

- Fully Serviceable True 3 Piece Design
- 12" & 14" Sizes Available
- Beadlock or Rolled Lip Outer Halves
- Super Strong & Lightweight
- Heat Treated 6061 .190 Aluminum
- Many Offsets Possible
- Easy Tire Mounting
- Optional Colored Rings: polished, black, blue, orange, red or green.
- Tapered Lug Holes
- Pre-installed Valve Stems
- MADE IN U.S.A.
- CENTER CAPS Available



INNER HALF

BILLET CENTER

OUTER HALF (BEADLOCK VERSION)

### ROLLED LIP

- 12x6 from 8.2 lbs
- 12x7 from 8.6 lbs
- 12x8 from 8.9 lbs
- 12x10
- 12x11
- 14x6 from 10.95 lbs
- 14x7 from 11.3 lbs
- 14x8 from 11.65 lbs
- 14x10
- 14X11

### BEADLOCK

- 12x6 from 11.25 lbs
- 12x7 from 11.6 lbs
- 12x8 from 11.9 lbs
- 12x9 from 12.3 lbs
- 12x10 from 12.8 lbs
- 12x11 from 13.1 lbs
- 14x6 from 13.05 lbs
- 14x7 from 13.4 lbs
- 14x8 from 13.75 lbs
- 14x9 from 14.15 lbs
- 14x10
- 14X11



**SUPER STRONG, SUPER LIGHT & AMERICAN MADE!**

**NEW**  
**ULTIMATE**  
**SPORT**  
**UTILITY**  
14"

**6061**  
ULTIMATE



DOUBLE ROLLED LIP  
(DBL IR BB)

**6061**  
ULTIMATE



DOUBLE ROLLED LIP  
(DBL IR BB)

**SUPER STRONG**  
**.190 6061 T6 ALUMINUM**  
**REINFORCED CENTER!**



14" ULTIMATE SPORT WHEELS. OUR LATEST ADDITION TO THE ALUMILITE WHEEL LINE. THESE SUPER STRONG LIGHTWEIGHT UTILITY WHEELS will ride strong with their .190 rolled inner and outer lips and strong reinforced center!

**14" ULTIMATE SPORT FEATURES**

- .190 Rolled Inner Lip
- .190 Rolled Outer Lip
- .190 Reinforced Center
- Tapered Lug Holes
- 6061 T6 Aluminum Construction
- Pre-installed Valve Stems
- Available in Black or Polished wheel finishes
- MADE IN U.S.A.

**SIZES AND OFFSETS AVAILABLE**

<b>14x8 - (4+4) 4/156</b>	<b>14x8 - (4+4) 4/110</b>
<b>14x10 - (5+5) 4/156</b>	<b>14x10 - (5+5) 4/110</b>
<b>14x11 - (5+6) 4/156</b>	<b>14x11 - (5+6) 4/110</b>
<b>14x8 - (4+4) 4/136</b>	<b>14x8 - (4+4) 4/115</b>
<b>14x10 - (5+5) 4/136</b>	<b>14x10 - (5+5) 4/115</b>
<b>14x11 - (5+6) 4/136</b>	<b>14x11 - (5+6) 4/115</b>

**SUPER LIGHT WEIGHT!**  
ROLLED LIP

- 14x8 from 11.35 lbs
- 14x10 from 12.35 lbs
- 14x11 from 12.65 lbs





12" & 14"

**THE MOST SUCCESSFUL UTV WHEELS EVER!**  
**DESIGNED, ENGINEERED AND MADE IN THE U.S.A**  
**US PATENT #12,833,748.**

- Helps block debris preventing damage to brake lines, caliper & wheel.
- Eliminates stock OEM steel rock guard plates for further convenience and weight reduction.
- Universal built in rock guard—works with all stock front hubs and most aftermarket hubs.
- Stiffening integral rock guard
- Reinforced super strong lip design.
- Tapered lug holes
- Pre-installed Valve Stems

**SUPER LIGHT WEIGHT!**

UT ROK'N LOCK	UT ROK-OUT
• 12x6 from 10 lbs	• 12x6 from 8.30 lbs
• 14x6 from 13.50 lbs	• 14x6 from 11.55 lbs

**SIZES AVAILABLE**

12x6 - 10 4/110, 4/115, 4/136, 4/156  
 14x6 - 10 4/110, 4/115, 4/136, 4/156



INNER ROLLED LIP



DOUBLE ROLLED LIP  
 BACK TO BACK (DBL RL BB)

ROLLED LIP WITH  
 INTEGRAL BEADLOCK  
 BACK TO BACK (RL IB BB)



12" & 14"

The Ultimate lightweight race wheel designed for today's increased weight UTVs & SXS Vehicles. Light enough for the sand yet strong enough for the trail.

- .190 Inner ROLLED LIP half
- .190 Outer BEADLOCK half
- .190 reinforced center plate
- Tapered lug holes
- Pre-installed Valve Stems
- Available in **Polished** or **Black** wheel finishes
- Made in U.S.A.

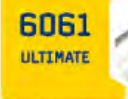
**SUPER LIGHT WEIGHT!**

**ULTIMATE BEADLOCK**

• 12x6 from 10.25 lbs
• 14x6 from 14.30 lbs

**SIZES AVAILABLE**

12x6,7,8,10,11 4/110, 4/115, 4/136, 4/156  
 14x6,7,8,10,11 4/110, 4/115, 4/136, 4/156



INNER ROLLED LIP

POLISHED



INNER ROLLED LIP

ROLLED LIP WITH  
 INTEGRAL BEADLOCK  
 BACK TO BACK (RL IB BB)

BLACK

ROLLED LIP  
 WITH INTEGRAL  
 BEADLOCK  
 BACK TO BACK (RL IB BB)



6061  
[125]

6061  
[190]



FRONT .125

REAR .190

A<sup>5</sup>



POLISHED FRONT

DOUBLE ROLLED LIP



BLACK REAR

DOUBLE ROLLED LIP

THE MOST SUCCESSFUL ATV WHEELS EVER!  
DESIGNED, ENGINEERED AND MADE IN THE U.S.A.

**SPORT BLUE - SAND OR MINI QUAD USE ONLY**  
Constructed of .125 6061 heat treated aircraft grade aluminum. Extremely strong yet very lightweight giving you maximum strength and minimum rolling mass.

**SPORT RED - MODERATE TO HARD TERRAIN USE**  
The strongest recreational model of our SPORT wheel line. These roll forged .190 thick 6061 heat treated aircraft grade aluminum wheels are designed for moderate applications.

- Pre-installed Valve Stems
- Available in **Polished**. Some available in **Black**.

.125 SIZES AVAILABLE		.190 SIZES AVAILABLE	
8x	4, 5, 6, 7, 8, 9, 10	8x	5, 6, 8
9x	8, 9	9x	8, 9
10x	4, 5, 6, 7, 8, 9, 10	10x	5, 6, 7, 8, 9, 10
12x	7, 8, 10, 12	11x	6
13x	12	12x	5, 6, 7, 8, 10, 11

THE MOST ECONOMICAL AND LIGHTWEIGHT ALUMINUM ATV WHEEL MADE.

The A5's popularity is steadily growing, no doubt due to it's DWT signature performance, quality and great price. This **lightweight** 6061 aluminum wheel is engineered to be durable yet forgiving. The A5 features our **inner & outer rolled lip** design, which exceeds the strength of most competitor's thicker, non heat-treated, 5000 series aluminum wheels.

- Pre-installed Valve Stems
- Available in **Polished** or **Black** wheel finishes
- Made in U.S.A.

SIZES AVAILABLE	
8x6	4/110, 4/115
8x8	4/4, 4/110, 4/115
9x8	4/110, 4/115
10x5	4/4, 4/144, 4/156
10x8	4/4, 4/110, 4/115
10x10	4/110, 4/115



SPORT

8", 9", 10",  
11 & 12"

A<sup>5</sup>

8", 9" & 10"

ALUMINUM



MADE IN USA



# ROK SERIES

10"

### CHAMPION GRADE REVOLUTIONARY ROCK GUARD WHEELS. US PATENT #12,833,748

- Keeps debris out, preventing damage to brake lines, caliper & wheel.
- Eliminates heavy inconvenient stock OEM steel rock guard plates.
- Integral rock guard stiffens the center.
- Reinforced super strong lip design.
- Improved fatigue resistance ring.
- .160 thick 6061 Aluminum
- JR wheels are .125 6061
- Pre-installed Valve Stems
- Made in U.S.A.

#### ROK'N LOCK & ROK-OUT SIZES

10x5 - [4+1] 4/144, 4/156

10x5 - [3+2] 4/144, 4/156

#### JR SIZES AVAILABLE

10x5 - [3+2] 4/144, 4/156

10x5 - [3.875+1.125] 4/144, 4/156

### REVOLUTIONARY BEADLOCK WHEELS OF CHAMPION STATUS.

- Improved fatigue resistance ring.
- Reinforced super strong lip design.
- Deep drop center.
- Attached nut plate
- Outer rolled lip on G2
- .160 outer half/.190 inner half 6061 Aluminum
- JR wheels are .125 6061
- Pre-installed Valve Stems
- Made in U.S.A.

#### G2 BEADLOCK SPECS: .160 OUTER/.190 INNER

8x8 - [3+5] 4/110, 4/115

9x8 - [3+5] 4/110, 4/115

#### G2 DB SPECS: .160 DUAL BEADLOCK

9x8 - [3+5] 4/110, 4/115

9x9 - [4+5] 4/110, 4/115

9x9 - [4.5+4.5] 4/110, 4/115

#### G2 SPECS: .160 DUAL ROLLED LIP

8x8 - [3+5] 4/110, 4/115

9x8 - [3+5] 4/110, 4/115

#### G2JR SPECS: .125 DUAL ROLLED LIP

8x6 - [2+4] 4/110, 4/115

# G2 SERIES

8" & 9"

ALUMINUM



MADE IN USA



INNER ROLLED LIP

ROLLED LIP WITH INTEGRAL BEADLOCK BACK TO BACK (RL IB BB)



DOUBLE ROLLED LIP

DOUBLE ROLLED LIP BACK TO BACK (DBL RL BB)



INNER ROLLED LIP

ROLLED LIP WITH INTEGRAL BEADLOCK BACK TO BACK (RL IB BB)



DOUBLE ROLLED LIP

DOUBLE ROLLED LIP BACK TO BACK (DBL RL BB)





DOUBLE ROLLED LIP BACK TO BACK  
(DBL RL BB)



DOUBLE ROLLED LIP



DOUBLE ROLLED LIP BACK TO BACK  
(DBL RL BB)



DOUBLE ROLLED LIP



2 ROK-OUT, 2 G2 BEADLOCK, 2 MUD PLUGS  
DWT HAT & STICKER SHEET



2 ROK'N LOCK, 2 G2 BEADLOCK, 4 MUD PLUGS  
DWT HAT & STICKER SHEET



2 ROK'N LOCK, 2 G2 BEADLOCK, 4 MUD PLUGS  
DWT HAT & STICKER SHEET



2 ROK-OUT JR, 2 G2 JR, DWT HAT & STICKER SHEET

## WHAT THE PROS USE TO WIN ALL OVER THE WORLD!

### MX TAILORED KITS

#### MX KITS:

- 2 - ROK-OUT WHEELS 10X5 (4+1) 4/144 OR 4/156
- 2 - G2 WHEELS WITH SHOT PEENED RINGS 8X8 (3+5) 4/110 OR 4/115
- 2 - 8" MUD PLUGS WITH WHITE DWT LOGO
- 1 - OFFICIAL DWT HAT & DWT STICKER KIT

#### MX KITS:

- 2 - ROK'N LOCK WHEELS WITH SHOT PEENED RINGS 10X5 (4+1) 4/144 OR 4/156
- 2 - G2 WHEELS WITH SHOT PEENED RINGS 8X8 (3+5) 4/110 OR 4/115
- 2 - 8" & 10" MUD PLUGS WITH WHITE DWT LOGO
- 1 - OFFICIAL DWT HAT & DWT STICKER KIT

### WORCS TAILORED KITS

#### WORCS KITS:

- 2 - ROK-OUT WHEELS 10X5 (4+1) 4/144 OR 4/156
- 2 - G2 WHEELS WITH SHOT PEENED RINGS 9X8 (3+5) 4/110 OR 4/115
- 2 - 9" MUD PLUGS WITH WHITE DWT LOGO
- 1 - OFFICIAL DWT HAT & DWT STICKER KIT

#### WORCS KITS:

- 2 - ROK'N LOCK WHEELS WITH SHOT PEENED RINGS 10X5 (4+1) 4/144 OR 4/156
- 2 - G2 WHEELS WITH SHOT PEENED RINGS 9X8 (3+5) 4/110 OR 4/115
- 2 - 9" & 10" MUD PLUGS WITH WHITE DWT LOGO
- 1 - OFFICIAL DWT HAT & DWT STICKER KIT

### GNCC KITS

#### GNCC KITS:

- 2 - ROK'N LOCK WHEELS WITH SHOT PEENED RINGS 10X5 (4+1) 4/144 OR 4/156
- 2 - G2 DOUBLE BEADLOCK WHEELS WITH SHOT PEENED RINGS 9X9 (4+5) 4/110 OR 4/115
- 2 - 9" & 10" MUD PLUGS WITH WHITE DWT LOGO
- 1 - OFFICIAL DWT HAT & DWT STICKER KIT

### JR KITS

#### JR KIT:

- 2 - ROK-OUT JR WHEELS 10X5 (3+2) 4/144
- 2 - G2 JR WHEELS 8X6 (2+4) 4/110
- 1 OFFICIAL DWT HAT
- 1 DWT STICKER KIT



**CB**  
CHAMPION  
IN A BOX  
RACE KITS



ALUMINUM



MADE IN USA

AMERICAN INGENUITY

AMERICAN STRENGTH

AMERICAN HARD WORK

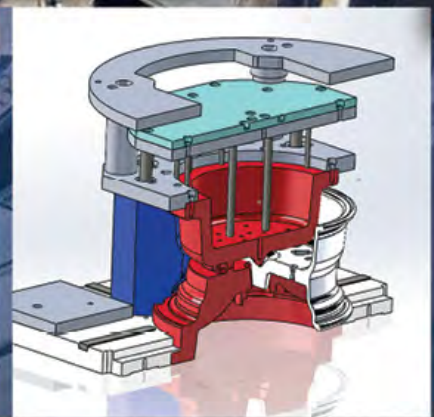
AMERICAN DREAMS

AMERICAN SUCCESS

AMERICAN LEGACY

**DWT LITECAST**

**CAST WITH PRIDE  
IN THE U.S.A.**



**ALUMINUM WHEELS CAST IN THE U.S.A.**

We at DWT hope that others will follow us in our latest bold move. **We recently added aluminum wheel casting to our domestic production capabilities.** In doing so, we have increased American jobs through expanding domestic manufacturing. **By building our casting facility in the U.S.A.,** we ensure higher quality, quicker production and **job stability to many American families.** It is even "Greener" without shipping from overseas. **Together we can** help boost our economy no matter what the naysayers think. Please be part of the solution and join us by supporting domestic production and the creation of American jobs. **Together we can and will do our part to help keep our great nation on top.**

AMERICAN WORKFORCE

AMERICAN PROSPERITY

AMERICAN VALUES

AMERICA'S FUTURE



**NEW**  
**STEALTH**

12" & 14"



**THE ALL NEW STEALTH LITECAST WHEEL!**

**OUR LATEST HIGH QUALITY, SLEEK, BILLET-STYLED CAST ALUMINUM UTILITY ATV/SXS WHEEL.**

OUR NEWEST PROUDLY AMERICAN MADE CAST ALUMINUM WHEEL. Designed, engineered, tested and produced in the U.S.A. with HIGH QUALITY, HIGH STYLE and AFFORDABILITY in mind. Cast in high quality lightweight yet strong heat treated aluminum. This awesome new wheel is fully loaded with style, performance and the signature DWT dependability known the world over.

- **MADE IN U.S.A.**
- High Performance Sleek Styling
- Billet-Look Center
- Molded center cap included
- Pre-installed Valve Stems
- Tapered lug nuts sold separately
- Available in **Machined Black** wheel finish

**THE NEW DWT STEALTH WHEEL IS AVAILABLE IN ALL CURRENT UTV AND UTILITY ATV MODEL WHEEL FITMENTS!**

**SIZES AND OFFSETS AVAILABLE**

12x7 - [4+3] 4/110	14x7 - [4+3] 4/110	14x8 - [4+4] 4/110	14x10 - [5+5] 4/110
12x7 - [4+3] 4/115	14x7 - [4+3] 4/115	14x8 - [4+4] 4/115	14x10 - [5+5] 4/115
12x7 - [4+3] 4/136.5	14x7 - [4+3] 4/136.5	14x8 - [4+4] 4/136.5	14x10 - [5+5] 4/136.5
12x7 - [4+3] 4/156	14x7 - [4+3] 4/156	14x8 - [4+4] 4/156	14x10 - [5+5] 4/156

4/136.5 will fit 4/136 & 4/137 - properly fastened lug nuts will center the wheel.



**SCAN HERE TO VIEW  
HOW WE MAKE WHEELS  
RIGHT HERE IN THE U.S.A.**

**DWT LITECAST**



**MADE IN USA**



# NITRO

12"



NITRO MACHINED

## THE ALL NEW NITRO! SUPERCHARGED BLING FOR YOUR UTILITY ATV, SXS OR GOLF KART.

Our Newest Cast Aluminum Wheel. With it's explosive styling and hot performance, it's sure to burn the competition up with envy. This awesome new wheel is fully loaded with style, performance and signature DWT dependability.

- **MADE IN U.S.A.**
- Molded black center cap on machined and black wheels
- 12" as light as 10lbs 4ozs
- Tapered lug nuts sold separately
- NEW design without plastic rivets
- Pre-installed Valve Stems
- Available in **Black** or **Machined** wheel finishes



NITRO BLACK

### SIZES AND OFFSETS AVAILABLE

- 12x7 - [2+5] 4/4 GOLF (no center cap)
- 12x7 - [2+5] OR [4+3] 4/110
- 12x7 - [2+5] OR [4+3] 4/115
- 12x7 - [2+5] OR [4+3] 4/136.5
- 12x7 - [2+5] OR [4+3] 4/156

4/136.5 will fit 4/136 & 4/137 -  
lug nuts will center the wheel.

DWT LITECAST



MADE IN USA



# DIABLO

12" & 14"

## THE HOTTEST CAST ALUMINUM WHEELS ON THE MARKET!

STYLE & PERFORMANCE FOR YOUR UTILITY ATV OR SXS.

Each wheel is rated at 1000 lbs, which means its both strong & good looking! Diablo wheels are high performance and have the styling you crave!

- **MADE IN U.S.A.**
- 12" as light as 10lbs 10ozs
- Integrated center cap.
- Tapered lug nuts sold separately.
- NEW design without plastic rivets
- Pre-installed Valve Stems
- Available in **Machined** or **Black** wheel finish

### MANY SIZES AND OFFSETS AVAILABLE

12x7 - [4+3] 4/110, 115, 4/136.5, 4/156

12x7 - [2+5] 4/110, 115, 4/136.5, 4/156

4/136.5 will fit 4/136 & 4/137 - lug nuts will center the wheel.



## THE TOUGHEST CAST ALUMINUM BEADLOCK WHEELS ON THE MARKET FOR UTILITY ATV OR SXS!

Turn the heat up on the competition with your ATV, SXS or PIT VEHICLE. DWT's super strong Diablo beadlock has the performance, dependability and hot new styling you've always wanted in an affordable wheel!

- 1,000 lb load rating
- As light as 10lbs 13ozs
- Integrated center cap
- Tapered lug nuts sold separately
- Pre-installed Valve Stems
- Available in **Machined** or **Black** wheel finish

### 1,000 LB LOAD RATING

#### SIZES AND OFFSETS AVAILABLE

12x7 - [4+3] 4/110-115, 4/136.5, 4/156

12x7 - [2+5] 4/110-115, 4/136.5, 4/156

4/136.5 will fit 4/136 & 4/137 - lug nuts will center the wheel.



8 hole multi-pattern is standard on 4/110 and 4/115

# DIABLO BEADLOCK

12"

DWT LITECAST



MADE IN USA



**MOJAVE**

12" & 14"

SCAN FOR



RUN-FLAT  
TEST VIDEO

**SUPER STRENGTH!**

**RUN-FLAT TECHNOLOGY**

**NEW 12-PLY & 8-PLY RATED**



26X9-14 MOJAVE SHOWN WITH OUR  
UTILITY ROK-OUT WHEEL...P.6

# MOJAVE

## The **NEW** DWT MOJAVE Utility Tire...

*available with Run-Flat Technology*

Our latest tight tread hard surface tire designed for ATV, UTV or SXS vehicles. The all new DWT MOJAVE UTILITY TIRE is engineered for a smooth comfortable ride on hard pack surfaces like trails and pavement, giving it the right amount of traction for many road & trail applications.

It's specially formulated durable compound provides excellent traction and long tread life. MOJAVE'S tight wrap-around tread design and durable compound give it great surface & side grip as well as extended wear. Also available in RUN-FLAT construction for the most reliability available on the market. These characteristics make the new DWT MOJAVE UTILITY TIRE a necessity for any leisure or hard core rider.

12" MOJAVE AVAILABLE			
	8 PLY		12 PLY - RUN FLAT
NEW	25x8-12	NEW	25x8-12
14" MOJAVE AVAILABLE			
	8 PLY		12 PLY - RUN FLAT
NEW	26x9-14	NEW	26x9-14
NEW	26x11-14	NEW	26x11-14
NEW	28x9-14	NEW	28x9-14
NEW	28x11-14	NEW	28x11-14
NEW	30x10-14	NEW	30x10-14

**SUPER STRENGTH!**

**RUN-FLAT TECHNOLOGY**



# MOAPA

## DWT MOAPA Utility Tire...

*available with Run-Flat Technology*

After a long period of designing, engineering and testing; the all new DWT MOAPA UTILITY TIRE is here! It's aggressive tread and top notch construction are sure to make it the best utility tire available.

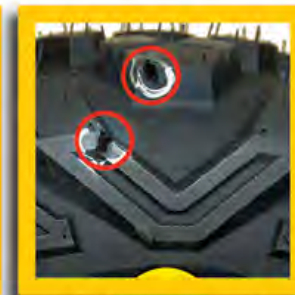
The DWT MOAPA tire's wide contact patch gives it the right amount of traction in many applications. The MOAPA's awesome looking and awesome performing sidewall design is full of protection with it's unique wrapped tread design. It's lightweight bias ply construction makes acceleration easy without draining power. The 6 ply specially engineered carcass design gives a high performance smooth ride.

SHOWN WITH OUR  
ULTIMATE UTILITY WHEEL...P.6

Punctured by **6 rounds** of rifle ammunition and driven over **50 miles** at **40 mph** speeds with a **load of 650 lbs** per tire. No problem! Now that's **True Run-Flat Capability!**



**.30-06 BULLET ENTRY HOLES**



**.30-06 BULLET EXIT HOLES**



GO ONLINE NOW  
AND SEE OUR NEW  
**PUNCTURE TEST VIDEO.**  
SEE JUST HOW TOUGH  
MOAPA RUN FLAT TIRES  
REALLY ARE!

12" MOAPA AVAILABLE	
6 PLY	12 PLY - RUN FLAT
25x8-12	25x8-12
25x10-12	25x10-12
26x9-12	26x9-12
26x11-12	<b>NEW 26x11-12</b>

14" MOAPA AVAILABLE	
6 PLY	12 PLY - RUN FLAT
26x9-14	26x9-14
26x11-14	26x11-14
28x10-14	28x10-14
28x12-14	28x12-14



**MOAPA**

12" & 14"

SCAN FOR



RUN-FLAT  
TEST VIDEO



10"

### ENGINEERED FOR MAXIMUM PERFORMANCE.

- Track Tested and Race Proven
- Full race and standard models
- Advanced carcass technology

Just like our top notch wheels, these new MX tires are race proven and engineered for maximum performance.

DWT MX SERIES tires and a DWT CHAMPION IN A BOX wheel system are the perfect combo for takin' first or just slingin' some roost!

#### MXF V2

- Hard pack, soft loamy terrains, blue groove track & clay
- Non Directional

#### MXF V3

- Excellent turning.
- Works great in all track conditions
- Non Directional

#### MXR V1

- Hard and soft terrains
- Non Directional

#### MXR V3

- Great sand tire yet works well on all track conditions.
- Excellent grip
- Straight line acceleration
- Non Directional

#### MXR V4

- Used by many top pro's and pro am riders.
- Closed course racing
- Maximum side bite
- Directional



MXF V2



#### MXF V2 SIZE/COMPOUND AVAILABLE

- 20x6 - 10 2 PLY HARD
- 20x6 - 10 2 PLY MEDIUM



MXF V3



#### MXF V3 SIZE/COMPOUND AVAILABLE

- 20x6 - 10 6 PLY HARD
- 20x6 - 10 6 PLY MEDIUM

### COMPOUNDS



HARD



MEDIUM



**NEW & IMPROVED**  
**MXR4 MEDIUM COMPOUND**



MXR V1



**MXR V1 SIZE/COMPOUND AVAILABLE**

- 18×10-8 2 PLY HARD
- 18×10-8 2 PLY MEDIUM
- 18×10-8 4 PLY HARD
- 18×10-8 4 PLY MEDIUM

MXR V3



**MXR V3 SIZE/COMPOUND AVAILABLE**

- 18×10-8 4 PLY MEDIUM
- 18×10-8 4 PLY SOFT

MXR V4



**MXR V4 SIZE/COMPOUND AVAILABLE**

- 18×10-8 4 PLY HARD
- 18×10-8 4 PLY MEDIUM **NEW**
- 18×10-8 4 PLY SOFT



**COMPOUNDS**





**ENGINEERED FOR MAXIMUM PERFORMANCE.**

- Track Tested and Race Proven
- Full race and standard models
- Advanced carcass technology

Just like our top notch wheels, these new XC tires are race proven and engineered for maximum performance.

**XCFV1**

- WORCS & GNCC Racing
- Desert or hard terrain
- Directional

**XCFV2**

Great for many surface conditions

- Sand to desert hard pack
- Non directional

**XCFV3 - RUN FLAT**

- Ultimate desert endurance tire
- Tamed all 3 races of the Baja in 2012
- Directional

**XCRV1**

- Great traction and durability
- Recreational use
- Yellow compound is more durable
- Directional

**XCRV2**

- Desert and endurance racing
- 10" width powers through the deepest ruts - loose dirt & sand
- Max traction in all conditions
- Light weight
- Non directional

**XCRV3 - RUN FLAT**

- Ultimate desert endurance tire
- Tamed all 3 races of the Baja in 2012
- Directional

**1ST PLACE BAJA CHAMPION!**



**RUN-FLAT TECHNOLOGY**



XCF V1



XCF V1

21x7 - 10 6 PLY HARD

XCF V2



XCF V2

21x6 - 10 6 PLY HARD  
21x6 - 10 6 PLY MEDIUM

XCF V3



XCF V3

23x7 - 10 12 PLY HARD

**COMPOUNDS**



HARD

**1ST PLACE BAJA CHAMPION!**



**RUN-FLAT TECHNOLOGY**



XCR V1

XCR V2

XCR V3



XCR V1

20x11 - 9 6 PLY HARD  
20x11 - 9 6 PLY MEDIUM

XCR V2

20x10 - 9 6 PLY HARD  
20x10 - 9 6 PLY MEDIUM  
20x10 - 9 6 PLY SOFT

XCR V3

22x11 - 9 12 PLY HARD

**COMPOUNDS**





8" & 10"

JUST LIKE THE BIG CHAMPS USE...  
BUT DESIGNED & ENGINEERED FOR THE CHAMPS OF THE FUTURE



JTFMX



JTRMX - 202



**JT MX:**

- Entry level closed course racing
- Soft loamy to hard blue groove tracks, Sand, Mud & clay

JR MX SIZE/COMPOUND AVAILABLE

18x7-8 2 PLY MEDIUM

19x6-10 2 PLY HARD



JTFXC



JTRXC



**JT XC:**

- Entry level closed course racing
- Excellent durability & traction
- Desert & hard terrain
- WORCS & GNCC Racing

JR XC SIZE/COMPOUND AVAILABLE

18X6-8 2 PLY HARD

19x6-10 2 PLY HARD

COMPOUNDS



HARD



MEDIUM

FLOAT ACROSS THE SAND WITH DWT'S NEW SUPER LIGHT DOONZ SAND TIRES!



**DOONZ**

10" & 12"



DOONZ FRONT

DOONZ 10" REAR

DOONZ 12" REAR - 8 PADDLE

10" DOONZ AVAILABLE	
21.5x8 - 10	FRONT 2 PLY
21x11 - 10	LEFT REAR 4 PLY
21x11 - 10	RIGHT REAR 4 PLY

12" DOONZ AVAILABLE	
25.5x11 - 12	FRONT 4 PLY
25.5x13 - 12	REAR 4 PLY
25.5x13 - 12	REAR 6 PLY

PERFECT FLOATING POWER  
WHEN PAIRED WITH OUR  
SPORT BLUE LABEL  
WHEELS...P.9

- Experience the difference immediately with our new HD 6-PLY RATED REAR SAND TIRE
- Achieve AWESOME STEERABILITY, SPEEDY CLIMBING & MAXIMUM FLOTATION when paired with DWT ALUMILITE 10" Wheels!

The NEW rear HD DOONZ tire offers INCREASED RIGIDITY and DURABILITY with its 6-ply rated construction. At only a 2 pound average addition in weight to its 4-ply rated predecessor, the new HD DOONZ is perfect for higher horsepower vehicles and heavier weights of UTVs such as the CAN-AM COMMANDER and POLARIS RANGER RZR XP.

10" BEACH REAR	
22x10 - 10	REAR 4 PLY

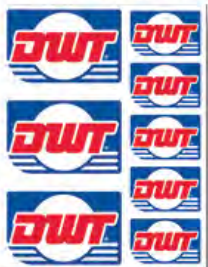
The NEW DWT REAR DOONZ-BEACH TIRE is available in a 4 ply rating for those high horse power vehicles. It has been run in all European beach races and has won many, including Le Touquet 2011.



BEACH 10" REAR

# PARTS & ACCESORIES

DWT STICKERS - MADE IN U.S.A.



DWT TRAILER STICKER  
- 13" X 8.5"

DWT STICKER SHEET  
- 3 - 3.25" X 5"  
- 5 - 2.875" X 2"

FLEXFIT® DWT HATS  
SMALL/MEDIUM OR  
LARGE/XLARGE.



OFFICIAL DWT T-SHIRTS  
MOST SIZES AVAILABLE  
WHILE SUPPLIES LAST.



**NEW!**  
DWT MUD PLUGS

FOR SPECIFIC 8 - 10"  
BEAD LOCK WHEELS.

White logo is stock in champion in a box kits.  
Blue, green, red & yellow available.



DWT COMPETITION BEADLOCK RINGS - FOR SPECIFIC 8", 9", 10", 12" & 14" WHEELS.

8", 9" & 10": Polished, Black, White, Blue, Green, Red, Orange, Yellow & Shot Peened finishes available.

12" & 14": Polished, Black, White, Blue, Green, Red & Orange finishes available.

MADE IN U.S.A.

LUG NUTS

- BOXES OF 16  
AVAILABLE



- 8MM X 1.25 - FLANGE
- 10MM X 1.25 - TAPERED BLACK & CHROME OR FLANGE CHROME
- 12MM X 1.25 - TAPERED BLACK & CHROME, FLAT CHROME
- 12MM X 1.5 - **NEW** SPLINED BLACK & CHROME WITH TOOL
- 3/8-24 - TAPERED BLACK & CHROME OR FLAT CHROME
- 1/2-20 - TAPERED CHROME

**NEW** 12MM X 1.5  
SPLINED LUG NUTS  
& TOOL



NUT PLATE KITS - MADE IN U.S.A.



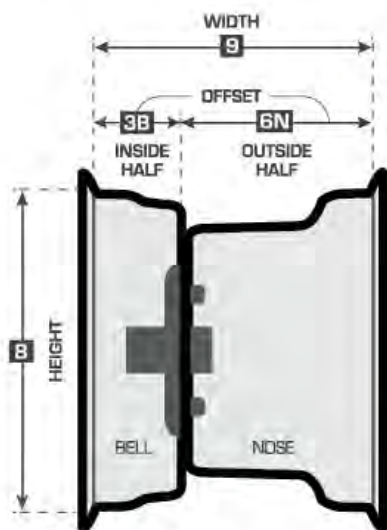
**8", 9", 10" METRIC KITS:**

3 NUT PLATES, 12 BOLTS, 6 RIVETS

**12" & 14" METRIC KITS:**

4 NUT PLATES, 16 BOLTS, 8 RIVETS

# TECHNICAL INFORMATION



## WHEEL DESCRIPTION>>>

### 8X9 3B+6N 4/110 .125 10MM

- The **8** refers to the wheel diameter, measured from the tire bead seat.
- The **9** refers to the wheel width, measured from inside bead to inside bead.
- The **3B** refers to the width of the inside half, in this case in a BELL shape.
- The **6N** refers to the width of the outside half, in this case in a NOSE shape.
- The **4/110** refers to the bolt pattern. 4 holes, equally spaced on a 110 mm circle.
- The **.125** refers to the thickness of the wheel material, in this case .125 inch thick.
- The **10MM** refers to the size of the bolt hole, in this case 10 mm.

#### WHEEL HALVES:

DWT Wheel halves come in two different shapes, a "BELL" or a "NOSE".

The BELL shape creates the maximum amount of clearance inside the wheel for fitment of brake and steering parts.

The NOSE shape has a small drop center for ease of tire mounting.

## METRIC TO TRADITIONAL TIRE SIZE CONVERSION>>>

$$\overset{\text{A}}{235} / \overset{\text{B}}{30} - \overset{\text{C}}{12} = \overset{(1)}{9.25} \times \overset{(2)}{17.55} - \overset{(3)}{12}$$

Use the simple 3-step formula below

(1)  $\text{A} \div 25.4 = \text{Width in inches}$

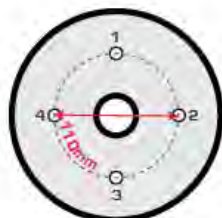
example:  $235 \div 25.4 = 9.25 \text{ inches}$

(2)  $\text{A} \div 25.4 \times \text{B} \times 2 + \text{C} = \text{Height in inches}$

example:  $235 \div 25.4 \times .30 \times 2 + 12 = 17.55 \text{ inches}$

(3) **No conversion needed = Rim Diameter in inches**

## BOLT PATTERN MEASUREMENT>>>



#### 4 HOLE:

Distance between bolt hole centers.

Ex. 4/110



#### 3 HOLE:

Diameter of virtual circle passing through center of all bolt holes.

Ex. 3/90



#### 5 HOLE:

Distance from side of one hole to center of two holes over.

Ex. 5/4.5

## HOW TO READ A TIRE SIZE>>>

Note: The width of the tire is ideally 2-4 inches wider than the wheel

METRIC... **235/30 - 12**

- 235** = Width of the tire in millimeters.
- 30** = Aspect ratio - This sidewall's height is 30% of the tire's width.
- 12** = Rim diameter of the wheel on which the tire fits.

TRADITIONAL... **25.5 X 11 - 12**

- 25.5** = Height of the tire in inches mounted to specifications.
- 11** = Width of the tire in inches mounted to specifications.
- 12** = Rim diameter of the wheel on which the tire fits.

## TIRE MOUNTING SAFETY>>>

**WARNING: MOUNTING TIRES CAN BE DANGEROUS IF DONE IMPROPERLY. ONLY TRAINED PERSONNEL, USING THE PROPER TOOLS, SAFETY EQUIPMENT AND SAFETY PRECAUTIONS SHOULD MOUNT TIRES. ALSO, FAILURE TO FOLLOW THESE RECOMMENDED PROCEDURES MAY VOID YOUR WARRANTY.**

1. Use only a clip-on style air chuck with a long extension hose, remote filler and inflation gauge.
2. Using a tire mounting lubricant, lube the tire and rim bead seat.
3. The tire and wheel must be located away from all personnel. Use a solid barrier like a block wall or tire mounting cage between the tire/wheel assembly and the installer.  
**THE TIRE/WHEEL ASSEMBLY MUST BE OUT OF "LINE OF SIGHT" DURING THE INFLATION PROCESS.**
4. Determine the tire's maximum recommended tire inflation pressure.
5. Inflate the tire until you hear the beads' seat snap, or until you reach the tire manufacturer's maximum recommend tire pressure. **NEVER EXCEED THE TIRE MANUFACTURER'S MAXIMUM TIRE PRESSURE.**
6. If the tire beads do not snap, **STOP!** Release all air from the tire/wheel assembly. Call the manufacturers for help.
7. Once the tire bead is seated, disconnect the chuck, re-install the valve core and inflate to proper operating pressure.

# THANK YOU FOR SUPPORTING AMERICAN JOBS & MANUFACTURING!



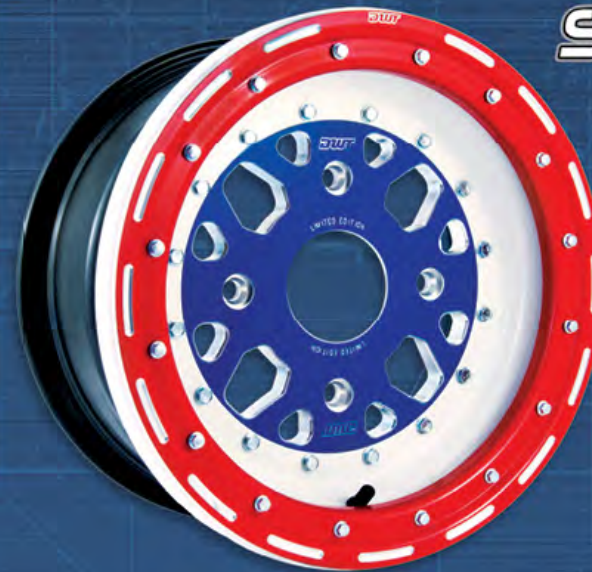
## ALUMILITE

**MADE WITH PRIDE IN THE U.S.A. FOR OVER 20 YEARS!** Our Alumilite wheel line has allowed us to experience the **American dream** and support many **fellow hardworking Americans** for over 20 years. Since our humble beginnings in a small shop we've grown strong over the years through **American ingenuity, hard work and much sacrifice.** And without question we could not have done it without the support of every single customer. **A testament to the American Dream through blood, sweat and tears** can be seen in how far our ever advancing Alumilite wheel line has come. Our spun wheels continue to be on top and we strive to keep them there. **Please join us in our support of creating and sustaining American jobs through domestic production.**

### DWT LITECAST

#### ALUMINUM WHEELS CAST IN THE U.S.A.

We at DWT hope that others will follow us in our latest bold move. **We recently added aluminum wheel casting to our domestic production capabilities.** In doing so, we have increased American jobs through expanding domestic manufacturing. **By building our casting facility in the U.S.A.,** we ensure higher quality, quicker production and **job stability to many American families.** It is even "Greener" without shipping from overseas. **Together we can** help boost our economy no matter what the naysayers think. Please be part of the solution and join us by supporting domestic production and the creation of American jobs. **Together we can and will do our part to help keep our great nation on top.**



## SECTOR 3-PIECE

limited edition  
RED • WHITE • BLUE  
**PATRIOT  
SECTOR**

- Fully Serviceable
  - 3-Piece Construction
  - Strong & Lightweight
  - Heat Treated 6061 .190 Aluminum
  - Made in U.S.A.
- ...more on page 4



**NOW ON INSTAGRAM >>>**  
DOUGLAS\_WHEEL\_DWT\_RACING

24 YEARS OF AWARD WINNING INNOVATION

DWTRACING.COM 1.800.RACE-RIM

1340 NORTH MELROSE DRIVE, VISTA, CALIFORNIA 92083 U.S.A.

SCAN TO VIEW  
HOW WE MAKE WHEELS  
RIGHT HERE IN THE U.S.A.



SCAN TO VIEW  
OUR MOAPA'S TRUE  
RUN FLAT CAPABILITY

