



STYLE  
4650 / 4550

---

WEAVING  
EXCELLENCE  
WITH  
INNOVATION



| Code                   | Color    | SOLAR OPTICAL PROPERTIES |    |    |    | SHGC/G VALUE<br>g-tot (glass & blind) |                    |
|------------------------|----------|--------------------------|----|----|----|---------------------------------------|--------------------|
|                        |          | TS                       | RS | AS | TV | SINGLE<br>1/4 CL                      | INSULATING<br>1 HA |
| <b>STYLE 4650 - 3%</b> |          |                          |    |    |    |                                       |                    |
| P10                    | Granite  | 6                        | 55 | 39 | 8  | 0.33                                  | 0.24               |
| P65                    | Linen    | 7                        | 58 | 35 | 8  | 0.31                                  | 0.23               |
| V45                    | Coal     | 5                        | 47 | 48 | 7  | 0.37                                  | 0.26               |
| V47                    | Chestnut | 7                        | 48 | 45 | 8  | 0.37                                  | 0.26               |
| <b>STYLE 4550 - 5%</b> |          |                          |    |    |    |                                       |                    |
| P10                    | Granite  | 7                        | 56 | 37 | 8  | 0.33                                  | 0.24               |
| P65                    | Linen    | 9                        | 59 | 32 | 10 | 0.32                                  | 0.23               |
| V45                    | Coal     | 8                        | 48 | 44 | 9  | 0.37                                  | 0.26               |
| V47                    | Chestnut | 9                        | 48 | 43 | 11 | 0.37                                  | 0.26               |



PROTECTION THAT LIVES ON  
**MICROBAN**

Microban® antimicrobial protection inhibits the growth of stain-causing bacteria, mold and mildew on the shade.



PRODUCT CERTIFIED FOR  
 LOW CHEMICAL EMISSIONS  
 UL.COM/GG  
 UL 2818



MIF Seal of Approval



TS = Solar Transmittance  
 RS = Solar Reflectance  
 AS = Solar Absorptance  
 TV = Visual Transmittance

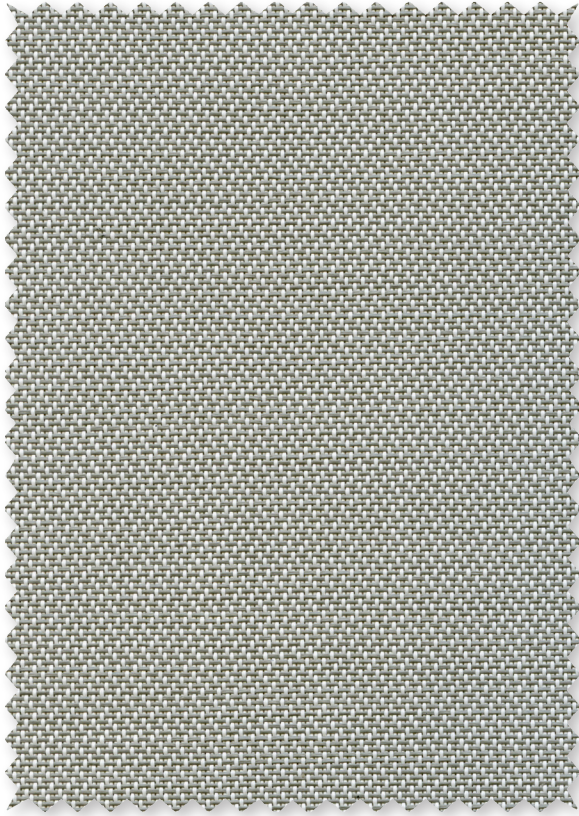
SHGC = Solar Heat Gain Coefficient

1/4 CL = 1/4" Clear Glass  
 1 HA = 1" Heat Absorbing Glass

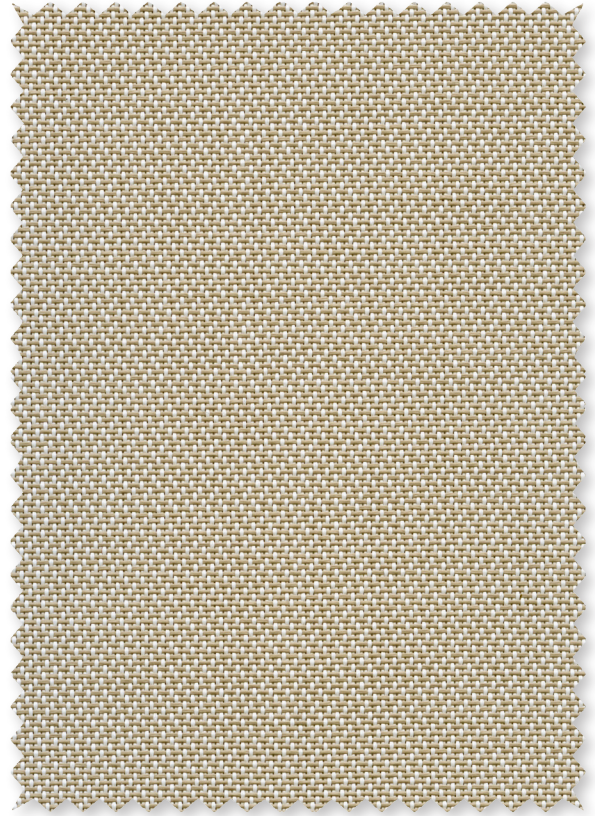
Fabrics Installed Internally  
 Zero-Degree Profile Angle

For additional performance values, test references and technical definitions visit us at [www.phifer.com](http://www.phifer.com).

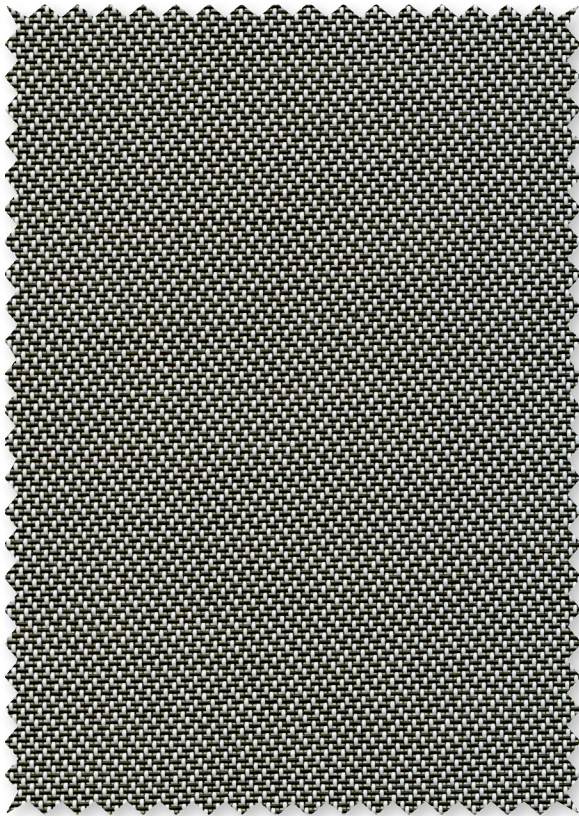
P10 Granite



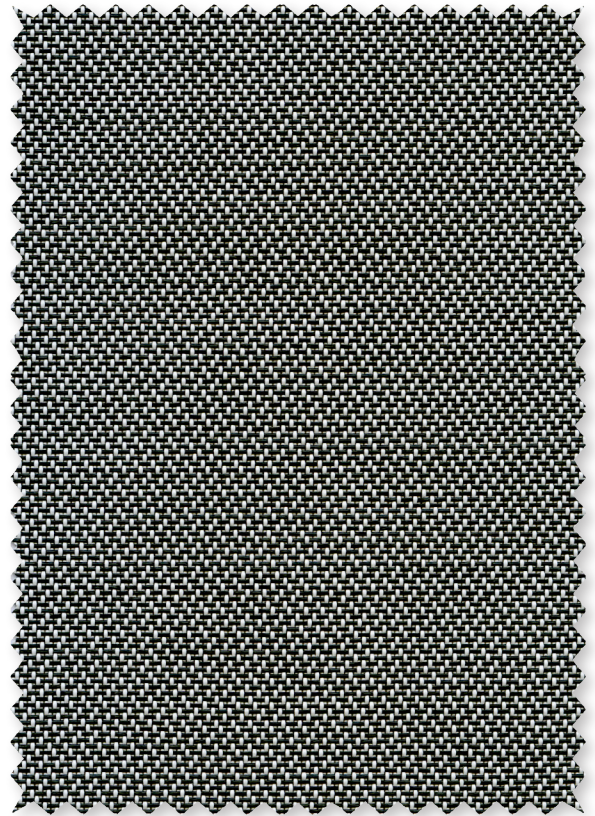
P65 Linen



V47 Chestnut



V45 Coal



# STYLE 4650 / 4550 SPECIFICATIONS

Using thin polyester yarns and a unique twill weave, Styles 4650 and 4550 are easy to fabricate and offer a distinct two-sided appearance that maximizes both visibility and solar heat reduction. Style 4650/4550 can also be used in exterior roller shades.

|                            |  |                                       |
|----------------------------|--|---------------------------------------|
| <b>FIRE CLASSIFICATION</b> | California U.S. Title 19 (small scale) | BS 5867 Part 2 Type B Performance     |
|                            | NFPA 701 TM#1 (small scale)            | CAN/ULC-S 109 (large and small scale) |
|                            | NFPA 701 TM#2 (large scale)            | IBC Section 803.1.1 (Class A Rating)  |
|                            | NFPA 101 (Class A Rating)              |                                       |

*Fire classifications are subject to change. It is the user's responsibility to check for the most current fire ratings at phifer.com.*

|   |   |          |                |             |          |
|---|---|----------|----------------|-------------|----------|
| <b>BACTERIA AND FUNGAL RESISTANCE</b>     | ASTM E 2180                                     | ASTM G21 | AATCC30 Part 3 | ASTM D 3273 | ASTM G22 |
|   | GREENGUARD Mold and Bacteria Standard ASTM 6329 |          |                |             |          |
| includes Microban antimicrobial additives |   |          |                |             |          |

|                                    |  |                 |
|------------------------------------|--|-----------------|
| <b>ENVIRONMENTAL CERTIFICATION</b> | GREENGUARD   | GREENGUARD Gold |
|                                    | Certified to these standards for low chemical emissions into indoor air during product usage |                 |

|                  |   |                                |
|------------------|---|--------------------------------|
| <b>LEAD FREE</b> | RoHS/Directive 2002/95/EC                         | REACH (EC 1907/2006) compliant |
|                  | ANSI/WCMA A 100.1-2007 for lead content           |                                |
|                  | US Consumer Product Safety Commission Section 101 |                                |

|                 |                  |                 |
|-----------------|------------------|-----------------|
| <b>WARRANTY</b> | 10-year interior | 5-year exterior |
|-----------------|------------------|-----------------|

|                               |  |  |
|-------------------------------|--|--|
| <b>ACOUSTICAL PERFORMANCE</b> | NRC (Noise Reduction Coefficient) and SAA (Sound Absorption Average) tested in accordance with ASTM C423-09a |  |
|-------------------------------|--|--|

Seal of Approval by the Melanoma International Foundation (MIF) for effectiveness in preventing sun damage to the skin or eyes

| STYLE                   | 4650   | 4550   |
|-------------------------|--|--|
| <b>WIDTHS</b>           | 63" and 98"<br>160 cm and 248.9 cm                 | 63" and 98"<br>160 cm and 248.9 cm                 |
| <b>ROLL LENGTH</b>      | 30 Linear Yards<br>27.4 m                          | 30 Linear Yards<br>27.4 m                          |
| <b>COMPOSITION</b>      | 17% Polyester<br>83% Vinyl on Polyester            | 17% Polyester<br>83% Vinyl on Polyester            |
| <b>MESH WEIGHT</b>      | 13.3 oz/yd <sup>2</sup><br>450.96 g/m <sup>2</sup> | 13.0 oz/yd <sup>2</sup><br>440.78 g/m <sup>2</sup> |
| <b>FABRIC THICKNESS</b> | 0.026 in<br>0.66 mm                                | 0.025 in<br>0.64 mm                                |
| <b>OPENNESS FACTOR</b>  | Approximately 3%                                   | Approximately 5%                                   |
| <b>UV BLOCKAGE</b>      | Approximately 97%                                  | Approximately 95%                                  |
| <b>ACOUSTICAL VALUE</b> | NRC .15 / SAA .18                                  | NRC .10 / SAA .11                                  |



P. O. Box 1700 • Tuscaloosa, Alabama 35403 -1700 USA  
 Phone: 205.345.2120 • FAX: 205.391.0799  
 Toll Free USA/Canada: 1.800.221.5497  
 phifer.com • ISO Registered



© SheerWeave is a registered trademark of PHIFER INCORPORATED.  
 © MICROBAN is a registered trademark of Microban Products Company.  
 ™ UL, the UL logos and the UL mark are trademarks of UL LLC.  
 Photo courtesy of HUNTER DOUGLAS, South America.  
 © PHIFER INCORPORATED V18 101718 3033836