



**ANSWER**

**2020 Parts and Accessories Catalog**

# Bottom Brackets



## Ceramic Bottom Brackets

Designed for use with two piece pro cranks (ideally the AccelerateRs). Ceramic bearings offer a smoother- turning crank than a traditional cartridge bearing for freer turning cranks and less energy wasted. The result is a significant reduction in spinning resistance that can be felt immediately when you make the switch from a traditional BB.

**MSRP:** \$109.99

**Weight:** 3.2 oz

**Black** - BB-ABB15PCER-BK

**Blue** - BB-ABB15PCER-BL

**Red** - BB-ABB15PCER-RD

**White** - BB-ABB15PCER-WH



## Answer Slider Bottom Bracket Kit

The Answer Slider Euro BB allows the user to easily and externally adjust chain alignment and crank position without having to remove crank arms in the process. The Slider BB kit includes two CNC machined aluminum cups with precision sealed bearings, two adjustable locking collars, a titanium square tapered spindle (JIS style) and two spindle bolts. Spindle lengths: 115, 118 and 122mm.

**MSRP:** \$133.95

**Weight:** 7.2 oz

**115mm** - BB-AKT15KT15-BK

**118mm** - BB-AKT15KT18-BK

**122mm** - BB-AKT15KT22-BK



## Answer Slider Ti Spindle

Titanium square tapered spindle (JIS style) and two spindle bolts. Spindle lengths: 115, 118, 122mm.

**MSRP:** \$79.95

**Weights**

**115mm** - 3.2 oz - BB-ASP15TS15-BK

**118mm** - 3.4 oz - BB-ASP15TS18-BK

**122mm** - 3.6 oz - BB-ASP15TS22-BK

# Braking



## Mini Brake Kits

The Answer Mini V-brake kit includes everything you need for a complete brake installation. It features forged aluminum brake arms with brass pivot bushings, threaded brake pads with curved profile for maximum rim contact, a 67" long brake cable for plenty of adjustment room, Answer Mini V-brake lever and all necessary hardware. Arm length: 90mm.

**MSRP:** \$55.00

**Weight:** 12.6 oz

**Black** - BK-ABK15MNKT-BK

**Polished** - BK-ABK15MNKT-PO

**White** - BK-ABK15MNKT-WT

## Pro Brake Kits

The Answer Pro V-brake kit includes everything you need for a complete brake installation. It features forged aluminum brake arms with brass pivot bushings, threaded brake pads with curved profile for maximum rim contact, a 67" long brake cable for plenty of adjustment room, Answer Pro V-brake lever and all necessary hardware. Designed for pro size race frames. Arm length: 102mm.

**MSRP:** \$55.00

**Weight:** 13.3 oz

**Black** - BK-ABK15MNKT-BK

**Polished** - BK-ABK15MNKT-PO

**White** - BK-ABK15MNKT-WT





## Answer Pro Carbon Lever

The Answer Pro Carbon brake lever features a cast aluminum body with lightweight carbon fiber lever for maximum weight savings, adjustable lever reach and spring assisted lever return for a positive feel.

**MSRP:** \$60.00

**Weight:** 3.0 oz

**Black** - BK-ABL15PRCB-BK



## Pro Alloy Brake Levers

The Answer Pro V-brake lever is made from lightweight aluminum and features a spring assisted lever return for a positive feel, adjustable reach and stainless steel hardware.

**MSRP:** \$35.00

**Weight:** 3.4 oz

**Black/Black** - BK-ABL15PRAL-BK

**Black/Silver** - BK-ABL15PRAL-PO

**White/Black** - BK-ABL15PRAL-WT



## Mini Alloy Brake Levers

The Answer Mini Alloy lever is made from lightweight aluminum and features spring-assisted return for a positive feel, adjustable reach and stainless steel hardware.

**MSRP:** \$35.00

**Weight:** 3.0 oz

**Black/Black** - BK-ABL15MNAL-BK

**Black/Silver** - BK-ABL15MNAL-PO

**White/Black** - BK-ABL15MNAL-WT



## Brake Pads

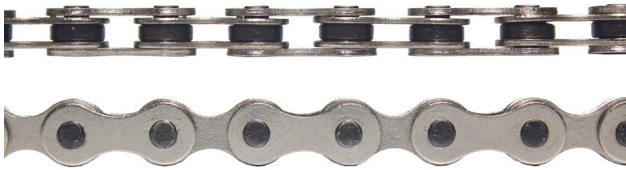
Stopping isn't exactly a top priority in a BMX race—until it is. Answer's brake pads are made from some serious stopping stuff, so you can tap the brakes and get as much or as little slow-down as you need to get back to goin fast.

**MSRP:** \$13.00

**Weight:** 2.0 oz

**Black/Black** - BK-ABP15RPAD-BK

# Chains



## Answer Performance Chain

The Answer chain has testing results that prove superior strength and stiffness over the competition.

**MSRP:** \$19.00

**Black** - CH-ACH17PCHN-SL



# Chain Tensioners



## Mini Chain Tensioners

Answer Mini chain adjusters are designed to be used on female axle hubs that use 6x1mm bolts. They are CNC machined from aluminum stock with a single adjustment bolt to keep weight at a minimum, but still stabilize the wheel.

**MSRP:** \$19.95

**Weight:** 1.0 oz

**Black** - CT-ACT15MNCT-BK

**Blue** - CT-ACT15MNCT-BL

**Red** - CT-ACT15MNCT-RD



## Pro Chain Tensioners

The Answer Pro chain adjusters are CNC machined from aluminum with multiple holes drilled to help save weight and a dual axle holes to accommodate a wide variety of dropout sizes.

**MSRP:** \$19.95

**Weight:** 2.4 oz

**Black** - CT-ACT150PRO-BK

**Blue** - CT-ACT150PRO-BL

**Polished** - CT-ACT150PRO-PO

**Red** - CT-ACT150PRO-RD

**White** - CT-ACT150PRO-WH





## Dagger Carbon Forks

The Answer Dagger is a lightweight race fork made from a 4K thread count carbon fiber weave with a 1-pc 7000 series aluminum steerer tube and crown, 7000 series aluminum dropouts with 3/8" axle slots and a built in compression device.

**MSRP:** \$299.00

### Size | Rider Limit | Product Weight

Mini (20 x 1")	100lbs	14.3 oz
Mini Cruiser (24 x 1")	100lbs	17.6 oz
Expert (20 x 1")	125lbs	23.1oz
Expert Cruiser (24 x 1")	125lbs	24 oz
Pro (20 x 1-1/8")	None	23.2 oz
Pro Cruiser (24 x 1-1/8")	None	24 oz

**Mini 20" - Black** - FK-AFK15MD20-BK

**Mini 20" - White** - FK-AFK15MD20-WH

**Mini Cruiser - Black** - FK-AFK15MD24-BK

**Mini Cruiser - White** - FK-AFK15MD24-WH

**Expert 20" - Black** - FK-AFK15ED20-BK

**Expert 20" - White** - FK-AFK15ED20-WH

**Expert Cruiser - Black** - FK-AFK15ED24-BK

**Expert Cruiser - White** - FK-AFK15ED24-WH

**Pro 20" - Black** - FK-AFK15PD20-BK

**Pro 20" - White** - FK-AFK15PD20-WH

**Pro Cruiser - Black** - FK-AFK15PD24-BK

**Pro Cruiser - White** - FK-AFK15PP24-WH

# Carbon Fork Wraps



## Mini 20"

**MSRP:** \$35.00

**Black** - FK-ASK15MN20-BK

**Blue** - FK-ASK15MN20-BL

**Gold** - FK-ASK15MN20-GD

**Green** - FK-ASK15MN20-GR

**Orange** - FK-ASK15MN20-OR

**Pink** - FK-ASK15MN20-PK

**Purple** - FK-ASK15MN20-PR

**Red** - FK-ASK15MN20-RD

**White** - FK-ASK15MN20-WH

**Yellow** - FK-ASK15MN20-YL

## FLO Colors

**MSRP:** \$45.00

**FLO Green** - FK-ASK15MN20-GF

**FLO Orange** - FK-ASK15MN20-OF

**FLO Pink** - FK-ASK15MN20-PF

**FLO Yellow** - FK-ASK15MN20-YF

## Mini 24"

**MSRP:** \$35.00

**Black** - FK-ASK15MN24-BK

**Blue** - FK-ASK15MN24-BL

**Gold** - FK-ASK15MN24-GD

**Green** - FK-ASK15MN24-GR

**Orange** - FK-ASK15MN24-OR

**Pink** - FK-ASK15MN24-PK

**Purple** - FK-ASK15MN24-PR

**Red** - FK-ASK15MN24-RD

**White** - FK-ASK15MN24-WH

**Yellow** - FK-ASK15MN24-YL

## FLO Colors

**MSRP:** \$45.00

**FLO Green** - FK-ASK15MN24-GF

**FLO Orange** - FK-ASK15MN24-OF

**FLO Pink** - FK-ASK15MN24-PF

**FLO Yellow** - FK-ASK15MN24-YF

## Expert/Pro 20"

**MSRP:** \$35.00

**Black** - FK-ASK15EP20-BK

**Blue** - FK-ASK15EP20-BL

**Gold** - FK-ASK15EP20-GD

**Green** - FK-ASK15EP20-GR

**Orange** - FK-ASK15EP20-OR

**Pink** - FK-ASK15EP20-PK

**Purple** - FK-ASK15EP20-PR

**Red** - FK-ASK15EP20-RD

**White** - FK-ASK15EP20-WH

**Yellow** - FK-ASK15EP20-YL

## FLO Colors

**MSRP:** \$45.00

**FLO Green** - FK-ASK15EP20-GF

**FLO Orange** - FK-ASK15EP20-OF

**FLO Pink** - FK-ASK15EP20-PF

**FLO Yellow** - FK-ASK15EP20-YF

## Expert/Pro 24"

**MSRP:** \$35.00

**Black** - FK-ASK15EP24-BK

**Blue** - FK-ASK15EP24-BL

**Gold** - FK-ASK15EP24-GD

**Green** - FK-ASK15EP24-GR

**Orange** - FK-ASK15EP24-OR

**Pink** - FK-ASK15EP24-PK

**Purple** - FK-ASK15EP24-PR

**Red** - FK-ASK15EP24-RD

**White** - FK-ASK15EP24-WH

**Yellow** - FK-ASK15EP24-YL

## FLO Colors

**MSRP:** \$45.00

**FLO Green** - FK-ASK15EP24-GF

**FLO Orange** - FK-ASK15EP24-OF

**FLO Pink** - FK-ASK15EP24-PF

**FLO Yellow** - FK-ASK15EP24-YF



# Cogs



## Holeshot Cogs

ANSWER Holeshot cogs are Shimano-compatible spline pattern, stainless steel cassette cogs are CNC machined and have multiple holes cut out to help shed weight. Available in 14T thru 18T. Cogs will fit Mini, Expert, and Pro Holeshot hubs.

**MSRP:** \$24.95

### Weights

- 14T:** 0.8 oz - CG-ACG15H14T-BK
- 15T:** 1.0 oz - CG-ACG15H15T-BK
- 16T:** 1.2 oz - CG-ACG15H16T-BK
- 17T:** 1.4 oz - CG-ACG15H17T-BK
- 18T:** 1.8 oz - CG-ACG15H18T-BK

## Alumilite Cogs

Answer Mini Cassette Cogs are CNC machined from 7075 aluminum. Fits Answer Alumilite cassette hubs only.

**MSRP:** \$27.95

### Weights

- 12T:** 0.3 oz - CG-ACG15A12T-BK
- 13T:** 0.4 oz - CG-ACG15A13T-BK
- 14T:** 0.5 oz - CG-ACG15A14T-BK
- 15T:** 0.6 oz - CG-ACG15A15T-BK
- 16T:** 0.6 oz - CG-ACG15A16T-BK
- 17T:** 0.6 oz - CG-ACG15A17T-BK
- 18T:** 0.8 oz - CG-ACG15A18T-BK



# Cranksets



## Alloy Mini Cranks

The Answer Mini Race crank arms are precision CNC machined from 7075 aluminum with deep grooves on the back of each arm to help shed weight without sacrificing strength or stiffness. Includes a removable machined five-bolt spider gear. Works with square tapered spindles only.

### Black - MSRP: 164.95

100mm - 8.6 oz - CK-ACK15M100-BK  
105mm - 8.8 oz - CK-ACK15M105-BK  
110mm - 8.8 oz - CK-ACK15M110-BK  
115mm - 9.4 oz - CK-ACK15M115-BK  
120mm - 9.7 oz - CK-ACK15M120-BK  
125mm - 10.0 oz - CK-ACK15M125-BK  
130mm - 10.8 oz - CK-ACK15M130-BK  
135mm - 11.0 oz - CK-ACK15M135-BK  
140mm - 11.2 oz - CK-ACK15M140-BK  
145mm - 11.6 oz - CK-ACK15M145-BK  
150mm - 11.9 oz - CK-ACK15M150-BK  
155mm - 12.1 oz - CK-ACK15M155-BK  
160mm - 12.3 oz - CK-ACK15M160-BK  
165mm - 12.6 oz - CK-ACK15M165-BK

### White - MSRP: 164.95

100mm - 8.8 oz - CK-ACK15M100-WH  
105mm - 8.8 oz - CK-ACK15M105-WH  
110mm - 9.0 oz - CK-ACK15M110-WH  
115mm - 9.6 oz - CK-ACK15M115-WH  
120mm - 9.7 oz - CK-ACK15M120-WH  
125mm - 10.2 oz - CK-ACK15M125-WH  
130mm - 10.8 oz - CK-ACK15M130-WH  
135mm - 11.0 oz - CK-ACK15M135-WH  
140mm - 11.4 oz - CK-ACK15M140-WH  
145mm - 11.8 oz - CK-ACK15M145-WH  
150mm - 12.0 oz - CK-ACK15M150-WH  
155mm - 12.2 oz - CK-ACK15M155-WH  
160mm - 12.4 oz - CK-ACK15M160-WH  
165mm - 12.8 oz - CK-ACK15M165-WH

## AccelerateR Pro Crank

The Answer AccelerateR race cranks feature CNC machined aluminum crank arms with steel pedal inserts, laser-etched logos and a four-bolt 104mm spider gear that's bolted to the drive side arm and then pressed onto a 24mm heat-treated chromoly spindle for maximum strength and rigidity. Includes a 24mm external Euro BB with oversized sealed bearings for long lasting performance.

**Pinch Bolts:** 6x1mm (x2)

**Spindle:** 24mm Hollow Chromoly

**Spindle Bolts:** 18x1mm (x1)

**Spindle Splines:** 10

**Chaining Bolts:** Not Included

### Black - MSRP: \$349.00

165mm - 1lb 8 oz - CK-ACK15P165-BK  
170mm - 1lb 8.2 oz - CK-ACK15P170-BK  
172.5mm - 1lb 8.4 oz - CK-ACK15P172-BK  
175mm - 1lb 8.6 oz - CK-ACK15P175-BK  
177.5mm - 1lb 8.8 oz - CK-ACK15P177-BK  
180mm - 1lb 9 oz - CK-ACK15P180-BK  
182.5mm - 1lb 10 oz - CK-CK15P182-BK  
185mm - 1lb 10.2 oz - CK-ACK15P185-BK

### White - MSRP: \$349.00

165mm - 1lb 8.2 oz - CK-ACK15P165-WH  
170mm - 1lb 8.4 oz - CK-ACK15P170-WH  
172.5mm - 1lb 8.6 oz - CK-ACK15P172-WH  
175mm - 1lb 8.8 oz - CK-ACK15P175-WH  
177.5mm - 1lb 9 oz - CK-ACK15P177-WH  
180mm - 1lb 9.2 oz - CK-ACK15P180-WH  
182.5mm - 1lb 10.2 oz - CK-ACK15P182-WH  
185mm - 1lb 10.4 oz - CK-ACK15P185-WH



## Flangeless Grips

Answer Flangeless Lock-On grips are molded from a soft rubber compound with repeating Answer logo pattern for comfort and control. The aluminum lock rings feature laser-etched Answer logos and help keep the grips in one place while easing installation and removal. Colors listed below are for the lock rings.

**MSRP:** \$23.95

**Mini** (Weight: 3.4 oz, Length: 105mm)

**Black** - HG-AHG15MNFL-BK

**Blue** - HG-AHG15MNFL-BL

**Flo Yellow** - HG-AHG15MNFL-FY

**Polished** - HG-AHG15MNFL-PO

**Purple** - HG-AHG15MNFL-PR

**Red** - HG-AHG15MNFL-RD

**White** - HG-AHG15MNFL-WH

**Pro** (Weight: 4.4 oz, Length: 135mm)

**Black** - HG-AHG15PNFL-BK

**Blue** - HG-AHG15PNFL-BL

**Flo Yellow** - HG-AHG15PNFL-FY

**Polished** - HG-AHG15PNFL-PO

**Purple** - HG-AHG15PNFL-PR

**Red** - HG-AHG15PNFL-RD

**White** - HG-AHG15PNFL-WH

## Flange Grips

Answer Flange Lock-On grips are molded from a soft rubber compound with repeating Answer logo pattern for comfort and control. The aluminum lock rings feature laser-etched Answer logos and help keep the grips in one place while easing installation and removal. Colors listed below are for the lock rings.

**MSRP:** \$23.95

**Mini** (Weight: 3.8 oz, Length: 105mm)

**Black** - HG-AHG15MWFL-BK

**Blue** - HG-AHG15MWFL-BL

**Flo Yellow** - HG-AHG15MWFL-FY

**Polished** - HG-AHG15MWFL-PO

**Purple** - HG-AHG15MWFL-PR

**Red** - HG-AHG15MWFL-RD

**White** - HG-AHG15MWFL-WH

**Pro** (Weight: 4.8 oz, Length: 135mm)

**Black** - HG-AHG15PWFL-BK

**Blue** - HG-AHG15PWFL-BL

**Flo Yellow** - HG-AHG15PWFL-FY

**Polished** - HG-AHG15PWFL-PO

**Purple** - HG-AHG15PWFL-PR

**Red** - HG-AHG15PWFL-RD

**White** - HG-AHG15PWFL-WH

# Handlebars



## Carbon Micro Handlebars

The Answer Carbon Micro race bars feature an extremely lightweight one piece design constructed from carbon fiber with knurled clamping area to prevent slip.

**MSRP:** \$99.95 (Black), \$105.95 (White)

**Rider weight limit:** 90 lbs

**Rise:** 2.25"

**Width:** 23.5"

**Backsweep:** 11°

**Upsweep:** 2°

**Weight:** 5.8 oz

**Black** - HB-AHB15MC25-BK

**White** - HB-AHB15MC25-WH



## Expert Carbon Handlebars

The Answer Carbon Expert race bars are made from a multi-directional carbon/Kevlar weave with a molded, integrated crossbar and a knurled stem area to improve stem grip.

**MSRP:** \$109.95 (Black), \$114.95 (White)

**Rider weight limit:** 135 lbs

**Rise:** 6"

**Width:** 26"

**Backsweep:** 9°

**Crossbar Height/Width:** 4.25"/8.5"

**Weight:** 12.1 oz

**Black** - HB-AHB15EC06-BK

**White** - HB-AHB15EC06-WH



## Carbon Mini Handlebars

Answer Carbon Mini race bars feature an extremely lightweight one piece design. Carbon fiber construction with knurled clamp area.

**MSRP:** \$109.95

**Rider weight limit:** 100 lbs

**Rise:** 3.5"

**Width:** 23"

**Backsweep:** 11°

**Weight:** 6.6 oz

**Black** - HB-AHB15MC35-BK

**White** - HB-AHB15MC35-WH



# Handlebars



## Pro Cro-Mo Bars

As the name implies, these pro-size handlebars are chromoly through-and-through and feature a slight backsweep to keep a forward-form out of the gate. We also put some gnarly knurling on the clamping area to avoid movement at the wrong moment.

**Size: 8.5 - MSRP: \$69.95**

Rise: 8.5"

Width: 27.5"

Backsweep: 10 degrees

Weight: 709g

**Black** - HB-AHB15P850-BK

**White** - HB-AHB15P850-WH

**Size: 8.25 - MSRP: \$69.95**

Rise: 8.25"

Width: 27.5"

Backsweep: 10 degrees

Weight: 692g

**Black** - HB-AHB15P825-BK

**White** - HB-AHB15P825-WH

**Size: 8 Pro Flat - MSRP: \$69.95**

Rise: 8"

Width: 27.5"

Backsweep: 7 degrees

Weight: 669g

**Black** - HB-AHB15FCM8-BK

**White** - HB-AHB15FCM8-WH

**Size: 8 - MSRP: \$69.95**

Rise: 8"

Width: 27.5"

Backsweep: 10 degrees

Weight: 669g

**Black** - HB-AHB15PCM8-BK

**White** - HB-AHB15PCM8-WH

**Size: 7 - MSRP: \$69.95**

Rise: 7"

Width: 27"

Backsweep: 10 degrees

Weight: 615g

**Black** - HB-AHB15PCM7-BK

**White** - HB-AHB15PCM7-WH

**Size: 6 - MSRP: \$69.95**

Rise: 6"

Width: 27"

Backsweep: 10 degrees

Weight: 613g

**Black** - HB-AHB15PCM6-BK

**White** - HB-AHB15PCM6-WH



**5" Pro Cruiser - MSRP: \$69.95**

Rise: 5"

Width: 27"

Backsweep: 10 degrees

Weight: 632g

**Black** - HB-AHB15PCM5-BK

**White** - HB-AHB15PCM5-WH

# Headsets



## Integrated Headsets

Answer integrated headsets feature an aluminum dust cover with rubber seal and integrated compression ring, two sealed integrated cartridge bearings and an aluminum top cap with star nut and bolt to keep everything tight.

**MSRP:** \$49.95

**1"** (Weight: 3 oz)

**Black** - HS-AHS15I001-BK

**Blue** - HS-AHS15I001-BL

**Polished** - HS-AHS15I001-PO

**Red** - HS-AHS15I001-RD

**White** - HS-AHS15I001-WH

**1-1/8"** (Weight: 3.2 oz)

**Black** - HS-AHS15I185-BK

**Blue** - HS-AHS15I118-BL

**Polished** - HS-AHS15I118-PO

**Red** - HS-AHS15I118-RD

**White** - HS-AHS15I118-WH



## Standard Headsets

The Answer BMX standard headset features two precision sealed cartridge bearings housed in high quality aluminum cups with laser-etched Answer logos for a clean look and a matching aluminum compression device to keep everything tight.

**MSRP:** \$67.95

**1"** (Weight: 3.8 oz)

**Black** - HS-AHS15S001-BK

**Blue** - HS-AHS15S001-BL

**Polished** - HS-AHS15S001-PO

**Red** - HS-AHS15S001-RD

**White** - HS-AHS15S001-WH

**1-1/8"** (Weight: 4.2 oz)

**Black** - HS-AHS15S118-BK

**Blue** - HS-AHS15S118-BL

**Polished** - HS-AHS15S118-PO

**Red** - HS-AHS15S118-RD

**White** - HS-AHS15S118-WH

# Headset Spacers



## Alloy Spacer 3-Pack

When you are looking to save some steer tube skin on your new Daggers, and not cut them down, our alloy spacer pack gives you all the stackin stability you need for that stem of yours. Three spacers to a pack (1", .5" and .25" in height).

**MSRP:** \$15.95

**Weight:** 0.2 oz

### 1" Spacer Packs

**Black** - HS-ASS15A001-BK

**Blue** - HS-ASS15A001-BL

**Polished** - HS-ASS15A001-PO

**Red** - HS-ASS15A001-RD

**White** - HS-ASS15A001-WH

### 1-1/8" Spacer Packs

**Black** - HS-ASS15A118-BK

**Blue** - HS-ASS15A118-BL

**Polished** - HS-ASS15A118-PO

**Red** - HS-ASS15A118-RD

**White** - HS-ASS15A118-WH

## Carbon Spacer 3-Pack

The Answer Carbon Headset Spacer Kit includes a pack of 3 carbon fiber headset spacers in 3, 5 and 10mm stack heights. Available to fit 1" and 1-1/8" steerer tubes.

**MSRP:** \$9.95

**Weight:** 0.4 oz

### 1" Spacer Packs

**Black** - HS-AHS15C001-BK

**Blue** - HS-AHS15C001-BL

**Gold** - HS-AHS15C001-GD

**Purple** - HS-AHS15C001-PR

**Red** - HS-AHS15C001-RD

**Silver** - HS-AHS15C001-SL

### 1-1/8" Spacer Packs

**Black** - HS-AHS15C118-BK

**Blue** - HS-AHS15C118-BL

**Gold** - HS-AHS15C118-GD

**Purple** - HS-AHS15C118-PR

**Red** - HS-AHS15C118-RD

**Silver** - HS-AHS15C118-SL



# Hubs



## Holeshot 28H Mini Hubsets

**MSRP:** \$349.00

The Answer Holeshot Mini cassette hubs feature lightweight CNC-machined aluminum hub shells with laser-etched logos, precision sealed bearings throughout, hollow aluminum center axles with 6x1 mm axle bolts and a three-pawl aluminum driver with 16T Shimano style cog for solid and reliable engagement.

**MSRP:** \$349.00

**Weight:** 14.2 oz

**Black** - HU-AHS51MH28-BK

**Blue** - HU-AHS15MH28-BL

**Red** - HU-AHS15MH28-RD

**White** - HU-AHS15MH28-WH

## Holeshot Expert Hubset 28H

**MSRP:** \$349.00

The Answer Holeshot Mini cassette hubs feature lightweight CNC machined aluminum hub shells with laser-etched logos, precision sealed bearings throughout, hollow aluminum center axles with 6x1 mm axle bolts and a 3 pawl aluminum driver with 16T Shimano style cog for solid and reliable engagement.

**MSRP:** \$349.00

**Weight:** 19.2 oz

**Black** - HU-AHS51EH28-BK

**Blue** - HU-AHS15EH28-BL

**Red** - HU-AHS15EH28-RD

**White** - HU-AHS15EH28-WH







## Holeshoot Pro Hubset 36H

**MSRP:** \$349.00

The Answer Holeshoot Pro cassette hubs feature lightweight CNC machined aluminum hub shells with laser-etched logos, precision-sealed Japanese bearings throughout, 14mm hollow aluminum center axles with 3/8x24tpi chromoly axle bolts and a 6 pawl aluminum driver with 16T Shimano style cog. Each driver pawl has 3 individual teeth that engage every three degrees for near instant engagement and off the line acceleration.

**MSRP:** \$349.00

**Weight:** 19.2 oz

**Black** - HU-AHS15PH36-BK

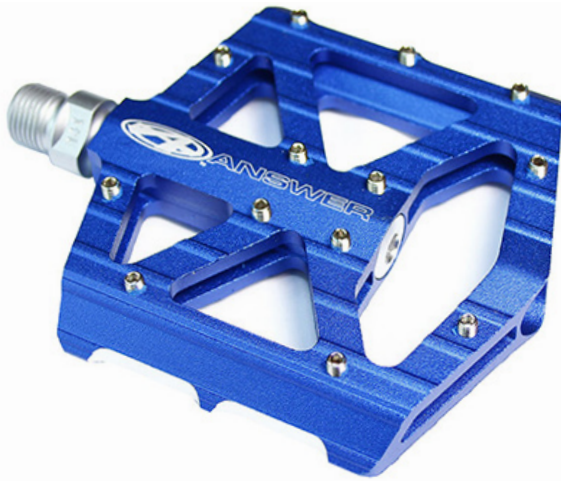
**Blue** - HU-AHS15PH36-BL

**Red** - HU-AHS15PH36-RD

**White** - HU-AHS15PH36-WH



# Pedals



## MPH Junior Platform Pedals

Answer MPH Junior pedals are CNC machined from lightweight aluminum featuring an ultra low platform designed for smaller riders, large machined cutouts for weight savings, 13 removable pins per side for maximum traction, chromoly spindles and sealed cartridge bearings for increased reliability. 9/16" (12.4 oz).

**MSRP:** \$99.00

**Black** - PD-APD15JFLT-BK

**Blue** - PD-APD15JFLT-BL

**Red** - PD-APD15JFLT-RD

**Silver** - PD-APD15JFLT-SL



## MPH Senior Platform Pedals

The Answer MPH Senior pedals are low profile platform pedals machined from lightweight aluminum featuring a unique "stepped" profile to help shed weight without sacrificing strength, six removable pins per side for traction, chromoly spindles and sealed cartridge bearings for increased reliability. 9/16" (13.7 oz)

**MSRP:** \$99.00

**Black** - PD-APD15SFLT-BK

**Blue** - PD-APD15SFLT-BL

**Red** - PD-APD15SFLT-RD

**Grey** - PD-APD15SFLT-GR

**White** - PD-APD15SFLT-WH



## Power Booster Clip Pedals

Answer's Power Booster clipless pedals feature a slim alloy cage with dual-sided entry, adjustable spring tension, chromoly spindles with precision sealed bearings for greater reliability, and Shimano SPD compatible cleats. Available in "Junior" for younger riders and "Senior" for everyone else. 9/16" - Junior: 10.6 oz | Senior: 14.7 oz

**MSRP:** \$99.00 (Junior), \$109.00 (Senior)

**Junior - Black** - PD-APD15JCLIP-BK

**Senior - Black** - PD-APD15SCLIP-BK



## Alumilite Hub Driver Lock Nut

Replacement driver lock nut for all Alumilite hubs

**MSRP:** \$13.50

**Weight:** 8g

**One Size** - HU-ALN15ALUM-SL



## Alumilite Titanium Driver

To replace worn out drivers in Alumilite hubs and/or to give your hubs a titanium makeover.

**MSRP:** \$75.00 (Mini) \$125 (Expert/Pro)

**Weights:** Mini:1.6oz, Expert 2.2oz

**Mini** - HU-ADR15TIMN-TI

**Expert/Pro** - HU-ADR15TIEX-TI



## Alumilite Pawls & Springs

Replacement pawl/spring kit for Alumilite hubs.

**MSRP:** \$10.00

**Mini Kit** - HU-APL10MPAL-BK

**Expert Kit** - HU-APL10EPAL-BK

**Pro Kit** - HU-APL10PPAL-BK



## Chainring Bolts (Alloy)

The ANSWER BMX alloy chainring bolts include a set of five 7075-T6 aluminum chainring bolts that are 8mm long to accommodate today's thicker style of chainrings. Available in black, red, blue, and silver.

**MSRP:** \$16.00

**Weight:** .04oz

**Black** - CR-ACR15ABLT-BK

**Blue** - CR-ACR15ABLT-BL

**Red** - CR-ACR15ABLT-RD

**Silver** - CR-ACR15ABLT-SL



## Chainring Bolts (Chromoly)

The ANSWER BMX chromoly chainring bolts include a set of five 8mm chainring bolts to accommodate today's thicker style of chainrings. Available in gun metal gray only.

**MSRP:** \$16.00

**Weight:** 1 oz

**Grey** - CR-ACR15CBLT-GY



## Dagger Top Cap

The Answer Dagger fork bolt is a replacement aluminum fork bolt for Answer Dagger race forks, but may work with other forks that use the same size compression bolt

**MSRP:** \$19.95

Size	Thread Pitch	Weight
1" Mini	23x1mm	0.6 oz
1" Expert	21x1.5mm	0.6 oz
1-1/8" Pro	24x1.5mm	0.6 oz

**Mini - Black** - FK-ATC15MN01-BK

**Mini - Blue** - FK-ATC15MN01-BL

**Mini - Polished** - FK-ATC15MN01-PO

**Mini - Red** - FK-ATC15MN01-RD

**Expert - Black** - FK-ATC15EX01-BK

**Expert - Blue** - FK-ATC15EX01-BL

**Expert - Polished** - FK-ATC15EX01-PO

**Expert - Red** - FK-ATC15EX01-RD

**Pro - Black** - FK-ATC15P118-BK

**Pro - Blue** - FK-ATC15P118-BL

**Pro - Polished** - FK-ATC15P118-PO

**Pro - Red** - FK-ATC15P118-RD



## Alumilite Chromoly Driver

Driver replacement for Expert/Pro Alumilite hubs.

**MSRP:** \$63 (Expert/Pro)

**Weights:** Expert/Pro 3.2oz

**Expert/Pro** - HU-ADR15CHEP-SL



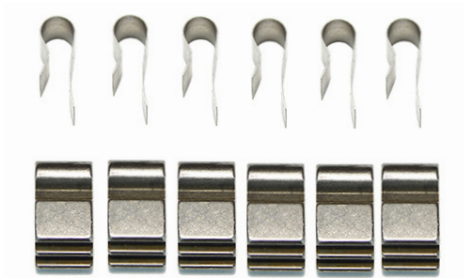
## Headset Reducer

Designed to make 1" steer tube forks adaptable to a 1-1/8" head tube frame, these headset reducer cups are pressed into the frame first and then a 1" headset can be installed to use a 1" steer tube.

**MSRP:** \$19.95

**Weight:** 0.8 oz.

**Black** - HS-AHR15RDCR-BK



## Holeshot Expert/Pro Pawls and Springs

Replacement pawls and springs for Expert or Pro Holeshot hub driver.

**MSRP:** \$19.00

**Expert/Pro Kit** - HU-APL10PPHS-BK



## Holeshot Expert/Pro Titanium Bolts

Replacement / Upgrade bolts for Answer Holeshot expert and pro hubs. Four to a package, as shown.

**MSRP:** \$39.95

**Weight:** 2.0 oz

**Four Bolt Kit** - HU-ABT15TBLT-TI



## Holeshot Mini Titanium Bolts

Replacement / upgrade bolts for Answer Holeshot mini hubs. Four to a package, as shown.

**MSRP:** \$39.95

**Weight:** 0.6 oz

**Four Bolt Kit** - HU-ABT15MBLT-TI



## Mini Crank Spider Bolts (4 Pack)

Replacement set of four bolts for Answer mini crank spider/gear.

**MSRP:** \$7.00

**Weight:** 0.6 oz

**4 Pack** - CR-ACR15MBLT-SL



## Mini Crank Spindle Bolts (Titanium)

For the weight conscious racer, the mini Ti crank bolts offer a significant weight savings over standard steer bolts. Fits with the ANSWER Slider BB with titanium spindles.

**MSRP:** \$39.95

**Weight:** 0.6 oz

**Four Bolt Kit** - HU-ABT15TBLT-TI



## Replacement Alumilite Cro-Mo Axle

This is the rear replacement axle for Answer Alumilite hubs. Material is 4130 Chromoly.

**MSRP:** \$35.00

**Weight:** 48g

**Mini** - HU-AAX15CRMN-BK

**Expert/Pro** - HU-AAX15CREP-BK



## Rim Strips

ANSWER BMX Rim Strips are red vinyl coated plastic rim strips that won't move or break like rubber strips can. Available in 28mm width to fit most 20x1.75" (406mm) and 24x1.75" (507mm) rims available today. Sold in pairs.

**MSRP:** \$4.95

**Weight:** 0.6 oz (pair)

**20"** - WH-ARS15RS20-RD

**24"** - WH-ARS15RS22-RD



## Slider BB Cups & Bearings

The ANSWER BMX Slider BB is an adjustable bottom bracket that allows you to adjust the spindle from side to side before locking into place to attain a more perfect chain line. For use with any square tapered spindle and crank. Available in Black only.

**MSRP:** \$46.95

**Weight:** 3.0 oz

**Black** - BB-ACP15SLDR-BK



## Mini Rims 28H

The Answer BMX Mini 20x1-1/8" rim is extruded from lightweight aluminum featuring a double-wall design with single hollow chamber, eyeleted spoke holes for increased nipple support and a pinned seam. Front rim has color-matched sidewall, while rear rim has machined sidewalls to increase braking performance.

**MSRP:** \$49.00

### SPECS

#### Front 20"

Bead Diameter: 451mm  
 Height: 18.7mm  
 Width: 19mm  
 Seam: Pinned  
 E.R.D: 435mm  
 Weight: 10.3 oz

#### Rear 20"

Bead Diameter: 451mm  
 Height: 18.7mm  
 Width: 18.7mm  
 Seam: Pinned  
 E.R.D: 435mm  
 Weight: 10 oz

#### Front 24"

Bead Diameter: 520mm  
 Height: 18.7mm  
 Width: 18.5mm  
 Seam: Pinned  
 E.R.D: 505mm  
 Weight: 11.9 oz

#### Rear 24"

Bead Diameter: 520mm  
 Height: 18.7mm  
 Width: 18.5mm  
 Seam: Pinned  
 E.R.D: 505mm  
 Weight: 11.1 oz

### COLORS

#### Front 20"

**Black** - WH-ARM15FM20-BK  
**Blue** - WH-ARM15FM20-BL  
**Red** - WH-ARM15FM20-RD  
**White** - WH-ARM15FM20-WH

#### Rear 20"

**Black** - WH-ARM15RM20-BK  
**Blue** - WH-ARM15RM20-BL  
**Red** - WH-ARM15RM20-RD  
**White** - WH-ARM15RM20-WH

#### Front 24"

**Black** - WH-ARM15FM24-BK

#### Rear 24"

**Black** - WH-ARM15RM24-BK



## Expert Rims 28H

The Answer BMX Expert 20x1.5" rim is extruded from lightweight aluminum featuring a double-wall design with single hollow chamber, eyeleted spoke holes for increased nipple support and a pinned seam. Front rim has color matched sidewall, while rear rim has machined sidewalls to increase braking performance.

**MSRP:** \$49.00

### SPECS

#### Front 20"

Bead Diameter: 406mm  
 Height: 24.7mm  
 Width: 24mm  
 Seam: Pinned  
 E.R.D: 378mm  
 Weight: 12.6 oz

#### Rear 20"

Bead Diameter: 406mm  
 Height: 24.7mm  
 Width: 23.8mm  
 Seam: Pinned  
 E.R.D: 378mm  
 Weight: 12.4 oz

#### Front 24"

Bead Diameter: 507mm  
 Height: 25mm  
 Width: 24mm  
 Seam: Pinned  
 E.R.D: 494mm  
 Weight: 15.5 oz

#### Rear 24"

Bead Diameter: 507mm  
 Height: 25mm  
 Width: 24mm  
 Seam: Pinned  
 E.R.D: 494mm  
 Weight: 15oz

### COLORS

#### Front 20"

**Black** - WH-ARM15FE20-BK  
**Blue** - WH-ARM15FE20-BL  
**Red** - WH-ARM15FE20-RD  
**White** - WH-ARM15FE20-WH

#### Rear 20"

**Black** - WH-ARM15RE20-BK  
**Blue** - WH-ARM15RE20-BL  
**Red** - WH-ARM15RE20-RD  
**White** - WH-ARM15RE20-WH

#### Front 24"

Black - WH-ARM15FE24-BK

#### Rear 24"

Black - WH-ARM15RE24-BK





## Pro Rims 36H

The Answer Pinnacle rim is the product of a years worth of research, development, and testing to build a high quality racing rim with the perfect blend of strength and weight. The Pinnacle rim features a double-wall design extruded from a proprietary blend of 6061-T6 aluminum with a pinned seam and machined sidewalls for improved braking performance.

**MSRP:** \$64.99

### SPECS

#### Front 20"

Bead Diameter: 406mm  
Height: 18.5mm  
Width: 28.5mm  
Seam: Pinned  
E.R.D: 382mm (20")  
481mm (24")  
Weight: 11.9 oz

#### Rear 20"

Bead Diameter: 406mm  
Height: 18.5mm  
Width: 28.5mm  
Seam: Pinned  
E.R.D: 382mm (20")  
481mm (24")  
Weight: 11.9 oz

#### Front 24"

Bead Diameter: 507mm  
Height: 18.5mm  
Width: 28.5mm  
Seam: Pinned  
ERD: 481mm  
Weight: 14.8 oz

#### Rear 24"

Bead Diameter: 507mm  
Height: 18.5mm  
Width: 28.5mm  
Seam: Pinned  
ERD: 481mm  
Weight: 14.8 oz

### COLORS

#### Front/Rear 20"

**Black** - WH-ARM15UP20-BK  
**Blue** - WH-ARM15UP20-BL  
**Red** - WH-ARM15UP20-RD  
**White** - WH-ARM15UP20-WH

#### Front/Rear 24"

**Black** - WH-ARM15UP24-BK  
**Blue** - WH-ARM15UP24-BL  
**Red** - WH-ARM15UP24-RD  
**White** - WH-ARM15UP24-WH

#### Rear 20"

**White** - WH-ARM15RP20-WH

#### Rear 24"

**White** - WH-ARM15RP24-WH

# Seats



## Mini Seat/Post Combo

The Answer Mini Seat/Post Combo features a lightweight plastic mini seat with textured surface for grip, bonded and riveted to a 127mm long aluminum seat post.

**MSRP:** \$26.95

**Weight:** 22.2 oz

**Black** - SA-ASA15MINI-BK

**White** - SA-ASA15MINI-WH



## Carbon Mini Seat/Post Combo

The Answer Mini Carbon Seat/Post Combo features a lightweight plastic mini seat with textured surface, bonded and riveted to a 127mm long carbon seat post for max weight savings.

**MSRP:** \$62.95

**Weight:** 5.3 oz

**Black** - SA-ASA15CMIN-BK

**White** - SA-ASA15CMIN-WH



## Pro Pivotal Seats

The Answer Pro Pivotal seat is a slim style seat with minimal foam padding and a hollow Pivotal bolt for weight savings, vinyl cover with faux carbon fiber pattern and plastic bumpers under the nose and tail section. You shouldn't be sitting on it, so it better look good.

**MSRP:** \$37.95

**Weight:** 8.8 oz

**Black** - SA-ASA15PPRO-BK

**Blue** - SA-ASA15PPRO-BL

**Black/Yellow** - SA-ASA15PPRO-BY

**White** - SA-ASA15PPRO-WH

**Red** - SA-ASA15PPRO-RD

**Black/Flower** - SA-ASA15PPRO-BF

# Seatposts



## Alloy Pivotal Seatposts

The Answer Pivotal seat post is made from 6061-T6 aluminum with a CNC machined base and laser-etched Answer logos for a clean look. 300mm long for plenty of height adjustment.

**MSRP:** \$33.95

**26.8mm** (Weight: 6.4 oz)

**Black** - SP-ASP15P268-BK

**Blue** - SP-ASP15P268-BL

**Red** - SP-ASP15P268-RD

**Silver** - SP-ASP15P268-SL

**27.2mm** (Weight: 6.6 oz)

**Black** - SP-ASP15P272-BK

**Blue** - SP-ASP15P272-BL

**Red** - SP-ASP15P272-RD

**Silver** - SP-ASP15P272-SL

## Carbon Pivotal Seatposts

Answer Carbon Pivotal seat posts features a CNC machined aluminum Pivotal base with full-carbon fiber seatpost tube for a strong, yet incredibly lightweight, combination. 300mm Long

**MSRP:** \$89.95

**22.2mm** (Weight: 3.2 oz)

**Black** - SP-ASP15C222-BK

**26.8mm** (Weight: 4.4 oz)

**Black** - SP-ASP15C268-BK

**27.2mm** (Weight: 5.3 oz)

**Black** - SP-ASP15C272-BK



# Seatpost Clamps



## Quick Release Seat Post Clamp

The ANSWER Quick-Release seat post clamp is CNC machined from 6061 aluminum with slotted clamping area for weight savings, laser-etched ANSWER logo and a large quick-release lever for ease of opening and closing. Available in Mini (25.4mm) and Pro (31.8mm)

**MSRP:** \$27.95

### Weights

**Mini** (weight: 1.2 oz)

**Black** - SC-AQR15M254-BK

**Blue** - SC-AQR15M252-BL

**Red** - SC-AQR15M254-RD

**Silver** - SC-AQR15M254-SL

**White** - SC-AQR15M254-WH

**Pro** (weight: 1.25 oz)

**Black** - SC-AQR15P318-BK

**Blue** - SC-AQR15P318-BL

**Red** - SC-AQR15P318-RD

**Silver** - SC-AQR15P318-SL

**White** - SC-AQR15P318-WH





## Mini Sprockets

The Answer Mini Sprocket is CNC machined from 7075 aluminum featuring a unique 4 bolt mounting system that works exclusively on Answer Mini crank arms, eliminating the joint between the spider and chainring to produce an incredibly strong and lightweight drive train combination. Teeth: 3/32", Thickness: 5mm

**MSRP:** \$44.95

## Weights

- 34T:** 3.2 oz - CR-ACR15MN34-BK
- 35T:** 3.4 oz - CR-ACR15MN35-BK
- 36T:** 3.5 oz - CR-ACR15MN36-BK
- 37T:** 3.6 oz - CR-ACR15MN37-BK
- 38T:** 3.9 oz - CR-ACR15MN38-BK
- 39T:** 4.0 oz - CR-ACR15MN39-BK
- 40T:** 4.2 oz - CR-ACR15MN40-BK
- 41T:** 4.3 oz - CR-ACR15MN41-BK
- 42T:** 4.4 oz - CR-ACR15MN42-BK
- 43T:** 4.4 oz - CR-ACR15MN43-BK



## Alloy Stems

The Answer BMX Dual Length stem features a unique adjustable length steerer tube spacer that allows for two different reach options in one lightweight package. CNC machined from 6061 aluminum with slotted sides and rear section, machined underside to further reduce weight, chamfered edges and laser-etched logos.

**MSRP:** \$64.95

**Mini 1" - Black - ST-AST15MN01-BK**

Reach: 34mm / 40mm

Weight: 6 oz

**Expert 1" - Black - ST-AST15EX01-BK**

Reach: 40mm / 45mm

Weight: 7.8 oz

**Pro 1-1/8" - Black - ST-AST15PR18-BK**

Reach: 45mm / 52mm

Weight: 8 oz

**Pro XL 1-1/8" - Black - ST-AST15PX18-BK**

Reach: 50mm / 57mm

Weight: 9.2 oz

## The Following Specs Apply to All Stems

Stack Height: 30mm

Rise: 21mm (Upright) / 9mm (Invert)

Clamp Bolts: 6x1mm (x4)

Pinch Bolts: 8x1.25mm (x2)



## Answer Carve Tires

The Answer Carve Folding tire is a lightweight race tire designed for paved and hard packed dirt race tracks. Features include a diamond shape tread pattern for straight-line grip, micro knurled sides for improved corner traction, a smooth centerline for minimal rolling resistance and a folding bead for maximum weight savings.

**MSRP:** \$37.99

### 20 x 1.60" Specs

Inflated Width: 1.69" (43mm)  
Inflated Diameter: 19.55" (496.5mm)  
Max Pressure: 100 psi  
Weight: 10.2 oz

### 20 x 1.85" Specs

Inflated Width: 1.89" (48mm)  
Inflated Diameter: 20.35" (517mm)  
Max Pressure: 100 psi  
Weight: 12.8 oz

**Black 20 x 1.60"** - TR-AT152060-BK

**Black 20 x 1.85"** - TR-AT152085-BK





## Mini Holeshot Wheelsets

The Answer Holeshot Mini cassette wheels are hand-built in the USA, using 28H Answer Mini 20x1-1/8" rims, laced 3X with black 15G spokes and nipples, to Answer Holeshot Mini cassette hubs. The hubs feature lightweight CNC machined aluminum hub shells with laser-etched logos, precision sealed bearings throughout, hollow aluminum center axles with 6x1mm axle bolts and a 3 pawl aluminum driver with 16T Shimano style cog for solid and reliable engagement. Rear rim is machined silver to improve braking performance. Weight: 2 lbs 9 oz

**MSRP:** \$479.00

**20" Black** - WH-AST15MN20-BK

**20" Blue** - WH-AST15MN20-BL

**20" Red** - WH-AST15MN20-RD

**20" White** - WH-AST15MN20-WH

**24" Black** - WH-AST15MN24-BK

## Expert Holeshot Wheelsets

The Answer Holeshot Expert cassette wheels are hand-built in the USA, using 28H Answer Expert rims, laced 3X with black 15G spokes and nipples, to Answer Holeshot Expert cassette hubs. The hubs feature CNC machined aluminum hub shells with laser-etched logos, precision sealed bearings throughout, 14mm hollow aluminum center axles with 3/8"x 24tpi chromoly axle bolts, and a six pawl aluminum driver with 16T Shimano style cog. Each driver pawl has three individual teeth that engage every three degrees for near instant engagement and off the line acceleration. Rear rim is machined silver to improve braking performance. Weight: 2 lbs 15.2 oz

**MSRP:** \$479.00

**20" Black** - WH-AST15EX20-BK

**20" Blue** - WH-AST15EX20-BL

**20" Red** - WH-AST15EX20-RD

**20" White** - WH-AST15EX20-WH

**24" Black** - WH-AST15EX24-BK

# Wheels



## Pinnacle Pro Wheelsets

The Answer Pinnacle Pro race wheels are hand-built in the USA, using 36H Answer Pinnacle double-wall rims, laced 3X with black 15G spokes and lightweight alloy nipples, to Answer Holeshot Pro cassette hubs. The Holeshot hubs feature CNC machined aluminum hub shells, 14mm hollow aluminum center axles with 3/8" axle bolts, a six pawl aluminum driver with 16T Shimano style cog, and precision sealed bearings throughout. Each driver pawl has three individual teeth that engage every three degrees for near instant engagement. Weight: 3 lbs 8.1 oz

**MSRP:** \$479.00

**20" Black** - WH-AST15PR20-BK

**20" Blue** - WH-AST15PR20-BL

**20" Red** - WH-AST15PR20-RD

**20" White** - WH-AST15PR20-WH

**24" Black** - WH-AST15PR24-BK

**24" Blue** - WH-AST15PR24-BL

**24" Red** - WH-AST15PR24-RD

**24" White** - WH-AWT15PR24-WH





# Racing Apparel



## Racing Gloves - Youth Sizes

**MSRP:** \$25.99

**Black - Youth X-Small - AP-GL15YXGL-BK**  
**Black - Youth Small - AP-GL15YSGL-BK**  
**Black - Youth Medium - AP-GL15YMGL-BK**  
**Black - Youth Large - AP-GL15YLGL-BK**

**Blue - Youth X-Small - AP-GL15YXGL-BL**  
**Blue - Youth Small - AP-GL15YSGL-BL**  
**Blue - Youth Medium - AP-GL15YMGL-BL**  
**Blue - Youth Large - AP-GL15YLGL-BL**

**Red - Youth X-Small - AP-GL15YXGL-RD**  
**Red - Youth Small - AP-GL15YSGL-RD**  
**Red - Youth Medium - AP-GL15YMGL-RD**  
**Red - Youth Large - AP-GL15YLGL-RD**

## Racing Gloves - Adult Sizes

**MSRP:** \$25.99

**Black - Adult Small - AP-GL15ASGL-BK**  
**Black - Adult Medium - AP-GL15AMGL-BK**  
**Black - Adult Large - AP-GL15ALGL-BK**  
**Black - Adult XL - AP-GL15AXGL-BK**

**Blue - Adult Small - AP-GL15ASGL-BL**  
**Blue - Adult Medium - AP-GL15AMGL-BL**  
**Blue - Adult Large - AP-GL15ALGL-BL**  
**Blue - Adult XL - AP-GL15AXGL-BL**

**Red - Adult Small - AP-GL15ASGL-RD**  
**Red - Adult Medium - AP-GL15AMGL-RD**  
**Red - Adult Large - AP-GL15ALGL-RD**  
**Red - Adult XL - AP-GL15AXGL-RD**





## Answer Hoodie (Black)

MSRP: \$40.00

**Small** - AP-AS15ASHD-BK

**Medium** - AP-AS15AMHD-BK

**Large** - AP-AS15ALHD-BK

**X-Large** - AP-AS15AXHD-BK



## Answer Barcode Hoodie

Long Sleeve Hooded Tee

MSRP: \$40.00

**Black - Small** - AP-AH15LSBC-BK

**Black - Medium** - AP-AH15LMBC-BK

**Black - Large** - AP-AH15LLBC-BK

**White - Small** - AP-AH15LSBC-WH

**White - Medium** - AP-AH15LMBC-WH

**White - Large** - AP-AH15LLBC-BK





## Answer "BMX Life" T-Shirt

**MSRP:** \$22.00

**Small** - AP-AT15ASFL-WR

**Medium** - AP-AT15AMFL-WR

**Large** - AP-AT15ALFL-WR

**XL** - AP-AT15AXFL-WR



## Answer Dri-Fit Jersey Tank

**MSRP:** \$26.00

**Small** - AP-AT15LSDT-BL

**Medium** - AP-AT15LMDT-BL

**Large** - AP-AT15LLDT-BL



## Answer Mesh Banner

**MSRP:** \$45.00

**Black** - BN-AB15BANR-BK



## Answer Canopy Tent

Heavy duty 10'x10' tent made to withstand all weather on race day. This tent features a velcro canopy top, octagon shaped multi-length adjustable legs, rolling bag and tent stakes.

**MSRP:** \$475.00

**Black** - EZ-ATEZTENT-BK



## Answer Plastic Sunglasses

**MSRP:** \$5.00

**Black** - AC-AS15SUNG-BK

# Branded Merchandise



## Answer Platinum T-Shirt

MSRP: \$20.00

Small - AP-AT15ASPL-BK

Medium - AP-AT15AMPL-BK

Large - AP-AT15ALPL-BK

XL - AP-AT15AXPL-BK

2X - AP-AT15A2PL-BK



## FlexFit Baseball Hat

MSRP: \$20.00

Small/Medium - AP-AH15SHAT-BK

Large/XL - AP-AH15LHAT-BK



## Beanie

MSRP: \$18.00

Black - AP-AH15BNIE-BK



## Snapback Hat

MSRP: \$20.00

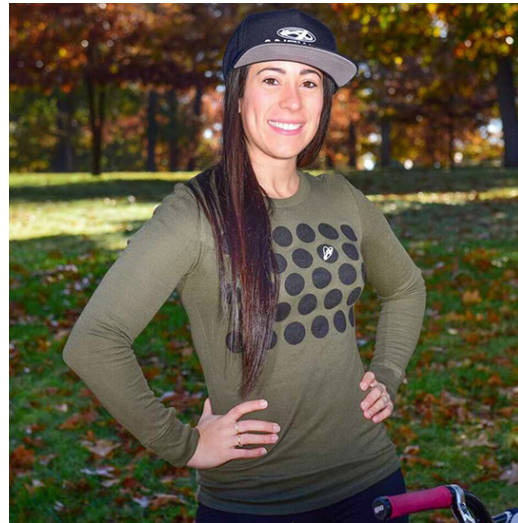
Black - AP-AH15SNAP-BK



## Straw Hat

MSRP: \$25.00

Tan - AP-AH15STRW-TN



## Ladies Heart Logo Long Sleeve Thermal

MSRP: \$30.00

Army Green - Small - AP-AT15LSLS-GR

Army Green - Medium - AP-AT15LMLS-GR

Army Green - Large - AP-AT15LLLS-GR



## Black Short-Sleeve T-Shirt

MSRP: \$20.00

Youth Small - AP-AT15YSAN-BK

Youth Medium - AP-AT15YMAN-BK

Youth Large - AP-AT15YLAN-BK

Adult Small - AP-AT15ASAN-BK

Adult Medium - AP-AT15AMAN-BK

Adult Large - AP-AT15ALAN-BK

Adult XL - AP-AT15AXAN-BK

Adult 2XL - AP-AT15A2XA-BK

Adult 3XL - AP-AT15A3XA-BK



## Ladies Striped Tank

MSRP: \$25.00

Black - Small - AP-AT15LST-BK

Blue - Small - AP-AT15LST-BL

Black - Medium - AP-AT15LMST-BK

Blue - Medium - AP-AT15LMST-BL

Black - Large - AP-AT15LLST-BK

Blue - Large - AP-AT15LLST-BL



## Ladies V-Neck Tee

MSRP: \$20.00

Red - Small - AP-AT15LSVN-RD

Red - Medium - AP-AT15LMVN-RD

Red - Large - AP-AT15LLVN-RD



## Long-Sleeve T-Shirt (Black)

MSRP: \$26.00

Small - AP-AT15ASLS-BK

Medium - AP-AT15AMLS-BK

Large - AP-AT15ALLS-BK

X-Large - AP-AT15AXLS-BK



## Logo Leggings (Black)

MSRP: \$30.00

Small - AP-AL15LSLG-BK

Medium - AP-AL15LMLG-BK

Large - AP-AL15LLLGBK



## Maxi Dress

MSRP: \$50.00

Black - AP-AD15LSMX-BK

Black - AP-AD15LMMX-BK

Black - AP-AD15LLMX-BK

# Branded Merchandise



## Rain Jacket - Black

MSRP: \$59.95

Small - AP-AJ15ASWB-BK

Medium - AP-AJ15AMWB-BK

Large - AP-AJ15ALWB-BK

X-Large - AP-AJ15AXWB-BK

2X - AP-AJ15A2WB-BK



## Red Short-Sleeve T-Shirt

MSRP: \$20.00

Youth Small - AP-AT15YSAN-RD

Youth Medium - AP-AT15YMAN-RD

Youth Large - AP-AT15YLAN-RD

Adult Small - AP-AT15ASAN-RD

Adult Medium - AP-AT15AMAN-RD

Adult Large - AP-AT15ALAN-RD

Adult XL - AP-AT15AXAN-RD

Adult 2X - AP-AT15A2XA-RD



## Sports Bra - Black

MSRP: \$40.00

Medium - AP-AB15LMBR-BK

Large - AP-AB15LLBR-BK



## Yoga Pants

**MSRP:** \$45.00

**Black - Small - AP-AL15LSYG-BK**

**Black - Medium - AP-AL15LMYG-BK**

**Black - Large - AP-AL15LLYG-BK**

**Pink - Small - AP-SL15LSYG-PB**

**Pink - Medium - AP-SL15LMYG-PB**

**Pink - Large - AP-SL15LLYG-PB**

