

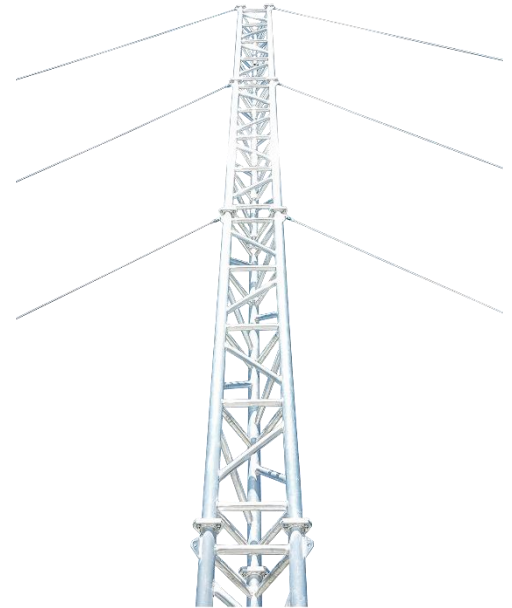
# AL500 ALUMINIUM GUYED LATTICE TOWER

## AP-GLT-AL500 GUYED TOWER, GROUND MOUNTED

### OVERVIEW

APAC's modular AL500 aluminium lattice towers are manufactured locally in Queensland in 3.1 metre sections allowing effortless transport, meaning total leadtime can be measured in days - not weeks or months. With each module weighing only 38.7 kg, the towers can be safely built with a small crew and minimal plant.

These modular lattice towers consist of a large 101.6 mm solid billet hinging base, modular 3.1 metre lattice sections, guy wires, anchor footings/skids, and your choice of headframe. The 3.1 m sections are easily stacked meaning radio towers can be built as small as 3.1 metres with full structural engineering certification up to 37.2 metres in Wind Region C. APAC's AL500 series towers feature three upright columns made from 76.2x4.75 CHS with 40x3 CHS lattice welded in between by certified boom welders, providing incredible strength while retaining a comparatively lightweight design.

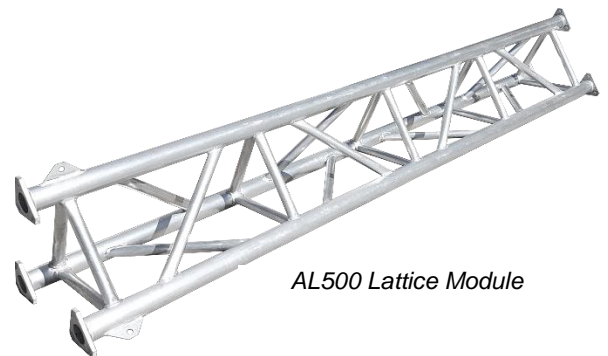


The ground mounted AL500 towers specify the use of Surefoot footings for simple, straightforward installation. Concrete cages and other options are available on request.

Your safety is most important - the tower base comprises of a heavy duty fully machined billet aluminium universal-joint. This universal-joint design allows axis locking to permit safe and easy raising, as well as the components machined from solid structural grade aluminium providing absolute peace of mind of tower integrity.

### FEATURES

- Machined billet universal-joint base
- 3.1 to 37.2 m tower heights
- 500 mm wide body
- 3100 mm modular lengths
- 76.2 x 4.75 mm aluminium round tube legs
- 40 x 3 mm lattice structure
- Low maintenance aluminium construction



*AL500 Lattice Module*

### ENGINEERING

- Aluminium fabrication in accordance to AS1664
- Aluminium welding in accordance to AS1665
- 7/16" Zinc or Stainless Steel bolts in accordance to ISO 3506 U.N.O.
- Guy cables in accordance to AS3569, Class 7x19 Grade 2070
- Guy wire preload tension to 0.94 kN
- Cable joints and attachments in accordance to AS2579
- Structure classification per AS3995 is Type II

# SPECIFICATION

PARAMETER	AP-GLT-AL500
Maximum Height	46.5 m (Wind Region A, subject to application)
Typical Footprint (60° guying)	$diameter = \frac{2h}{\tan 60}$
Wind Survivability	See table below
Max. Lattice Modules	15
Module Length	3100 mm
Module Weight	38.7 kg
Module Face Width	340 mm
Module Material	6005 T5 Aluminium Alloy, 76.2 x 4.75 mm CHS legs, 40 x 3 mm braces
Module Finish	Raw Aluminium, acid cleaned
Footing	Surefoot, Galvanised Steel (others available)
Guy Kit	Supplied, Galvanised Steel or Stainless Steel options
Guy Wires	6 mm, Class 7x19, Grade 2070, Galvanised Steel
Universal Joint Construction	Machined Billet, 6005 T5 Aluminium Alloy
Universal Joint Finish	Raw Aluminium

ENGINEERING CERTIFICATION	Wind Region A	Wind Region C
Max. Height (m)	46.5*	37.2
No. Modules	15	12