



MUSEUM MAP

WELCOME TO THE LOUVRE

The origin of the Louvre dates back to the 1200s. Once a royal residence, it became a museum in 1793 during the French Revolution and is now home to artworks dating from the 7th millennium BC to the 1850s. **The collections are displayed on five levels, in three interconnecting wings named after three prominent figures from French history: Sully (1559–1641), chief minister of King Henri IV, Richelieu (1585–1642), chief minister of King Louis XIII, and Denon (1747–1825), first director of the Musée du Louvre.**

PRACTICAL INFORMATION



Louvre Audio Guide

€5 rental of an Audio Guide (on New Nintendo 3DS™ XL) at the museum's ticket area; collect your guide on Level -1



Activities, tours and workshops

Group reception area under the Pyramid, Level -2
Studio, Level -1



Walking sticks, folding stools, pushchairs, baby carriers and wheelchairs are available free of charge for visitors who need them. Visitor assistance area, Level -2



The main book and gift shop (under the Pyramid) is open daily, except Tuesday, from 10 a.m. to 6:30 p.m. and until 9:45 p.m. on Friday.



Cafés and restaurants

A 'Paul' bakery; 'Café Richelieu-Angelina' (with terrace); 'Bistrot Benoit', a traditional French restaurant; 'Goguette' cafeteria; Starbucks; 'Café Mollin' (with terrace); and takeaway counters.



www.louvre.fr



Follow us on social media to keep up to date with life at the Louvre.



Museum

Open daily, except Tuesdays, from 9 a.m. to 6 p.m. and until 9:45 p.m. on Friday. Rooms begin closing at 5:30 p.m., and at 9:30 p.m. on Friday.

To improve the visitor experience, renovations are currently underway in the museum. However, access is guaranteed to 90% of the permanent collections on weekdays and 100% at weekends.
Information: +33(0)1 40 20 53 17
info@louvre.fr
handicap@louvre.fr

Dominique-Vivant Denon Research Centre (Porte des Arts)

A research and resource centre, open to individuals on Wednesdays, Thursdays and Fridays, 1 p.m.–5 p.m.

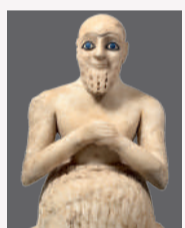
Viewing room for prints and drawings (Porte des Lions)

Open Monday to Friday from 1 p.m. to 6 p.m. by prior request. Contact: cabinet-des-dessins@louvre.fr

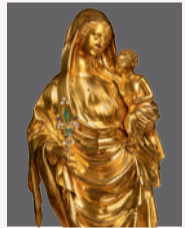
Visitor experience survey: GIVE US YOUR FEEDBACK



RICHELIEU WING



LEVEL 0
Near Eastern Antiquities / Mesopotamia / Iran
(5000 BC–AD 700)



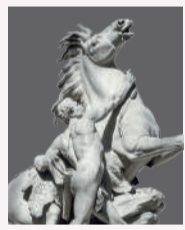
LEVEL 1
Decorative Arts / Europe
(500–1850)



LEVEL 2
Paintings / Northern Europe
(1350–1850)



LEVEL 2
Paintings / France
(1350–1650)

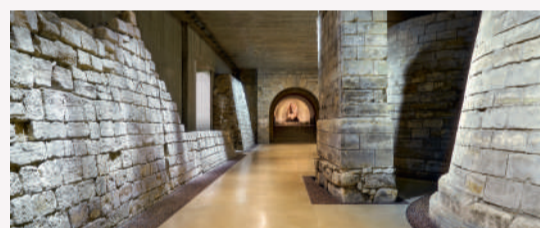


LEVELS -1 AND 0
Sculptures / France
(500–1850)

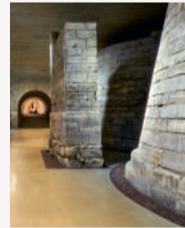


LEVEL -1
The Studio
Head to the Studio to plan your museum visit, take a break or take part in a free-access activity or pre-booked workshop. In the Forum at the Studio entrance you can find out all you want to know about the museum, its collections and its professions.

SULLY WING



LEVEL -1
History of the Louvre
The Medieval Louvre



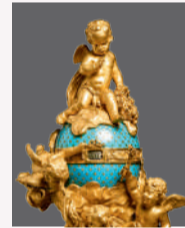
LEVEL 0
Near Eastern Antiquities / Iran / The Levant / Arabia
(7500 BC–AD 700)



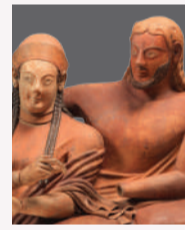
LEVEL 0
Greek Antiquities
(500–30 BC)



LEVELS 0 AND 1
Egyptian Antiquities
(4000–30 BC)



LEVEL 1
Decorative Arts / Europe
(1650–1800)

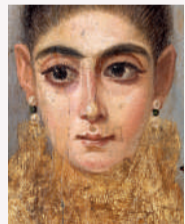


LEVEL 1
Greek, Etruscan and Italic Antiquities
(1000 BC–AD 500)

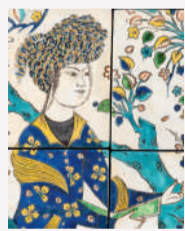


LEVEL 2
Paintings / France
(1650–1850)

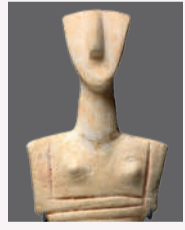
DENON WING



LEVELS -1 AND -2
Near Eastern and Egyptian Art
(30 BC–AD 1800)



LEVELS -1 AND -2
Islamic Art
(700–1800)



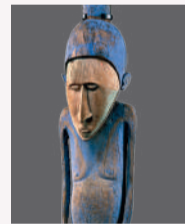
LEVEL -1
Greek Antiquities
(6500–500 BC)



LEVELS -1 AND 0
Sculptures / Europe
(500–1850)



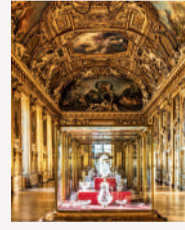
LEVEL 0
Roman Antiquities
(100 BC–AD 500)



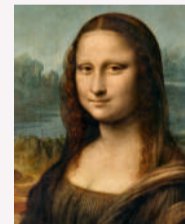
LEVEL 0
Arts of Africa, Asia, Oceania and the Americas
(700 BC–AD 1900)



LEVEL 1
Paintings / France
(1780–1850)



LEVEL 1
The Galerie d'Apollon / The French Crown Jewels



LEVEL 1
Paintings / Italy
(1250–1800)



LEVEL 1
Paintings / Spain
(1400–1850)



LEVEL 1
Paintings / Great Britain / United States
(1550–1850)

ALSO AT THE LOUVRE...



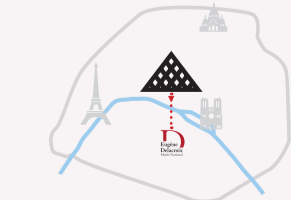
The Carrousel and Tuileries Gardens
The Carrousel Garden is laid out around the triumphal arch of Napoleon I, completed in 1808. To the west is the Tuileries Garden, created in 1564 by Queen Catherine de' Medici, redesigned a century later by André Le Nôtre and rearranged several times since. This masterpiece of garden design features beautiful flower beds, pools and groves laid out on either side of the Grande Allée with its view towards the Champs-Élysées. The two gardens are open-air sculpture museums.



The Musée National Eugène-Delacroix
Across the river Seine, just a 15-minute walk away from the Louvre, visit the apartment, studio and garden where the painter Eugène Delacroix spent the last years of his life. A Haven of peace where you can discover the secrets of Delacroix's studio through paintings, prints, drawings and objects that belonged to him.

Admission free for a same-day or next-day visit on presentation of the Louvre admission ticket. Open daily, except Tuesdays, from 9:30 a.m. to 5:30 p.m. and until 9 p.m. on the first Thursday of each month.

6, rue de Furstemberg, 75006 Paris
www.musee-delacroix.fr/en
#MuseeDelacroix



From the Louvre to the Musée National Eugène-Delacroix

15 minutes
39 95

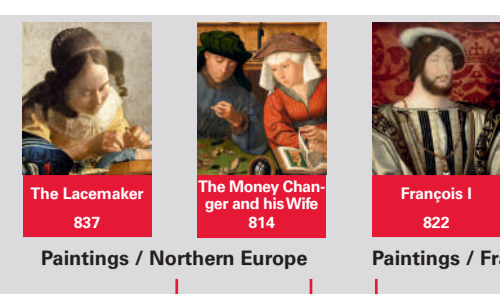


Photo credits:
Richelieu wing: © 2015 Musée du Louvre / Michel Denancé, © Musée du Louvre, dist. RMN - Grand Palais / Raphaël Chippaut, © RMN - Grand Palais (Musée du Louvre) / Stéphane Marchal, © Musée du Louvre, dist. RMN - Grand Palais / Hervé Lewandowski, © Musée du Louvre, dist. RMN - Grand Palais / Francis Bobbot, © 1997 Musée du Louvre / Pierre Philibert, © 2006 Musée du Louvre / Angèle Dequier, © RMN - Grand Palais (Musée du Louvre) / Tony Querec.
Sully wing: © 2016 Musée du Louvre / Michel Denancé, © 2015 Musée du Louvre / Thierry Olivier, © 2015 Musée du Louvre / Christian Décamps, © Musée du Louvre, dist. RMN - Grand Palais / Georges Poncet, © Musée du Louvre, dist. RMN - Grand Palais / Philippe Fuzau, © Musée du Louvre, dist. RMN - Grand Palais / Angèle Dequier, © RMN - Grand Palais (Musée du Louvre) / Franck Raux, © RMN - Grand Palais (Musée du Louvre) / Stéphane Marchal.
Denon wing: © 2015 Musée du Louvre / Michel Denancé, © RMN - Grand Palais (Musée du Louvre) / Tony Querec, © RMN - Grand Palais (Musée du Louvre) / Benoît Touchard / Michel Ursat / Tony Querec, © Musée du Louvre, dist. RMN - Grand Palais / Philippe Fuzau, © RMN - Grand Palais (Musée du Louvre) / Hervé Lewandowski, © Musée du Louvre, dist. RMN - Grand Palais / Raphaël Chippaut, © Musée du Louvre, dist. RMN - Grand Palais / Georges Poncet, © Musée du Louvre, dist. RMN - Grand Palais / Olivier Quidah, © Musée du Louvre, dist. RMN - Grand Palais / Daniel Letée et Carine Desmosses, © 2007 Musée du Louvre / Angèle Dequier, © RMN - Grand Palais (Musée du Louvre) / Jean-Gilles Berizzi, © Musée du Quai Branly, Dist. RMN-Grand Palais.
Graphic design: Dream On / Museum Gallery Interpretation Subdepartment / Graphic and Digital Interpretation Division / Printing: Imprimerie Technigraphic, June 2023.



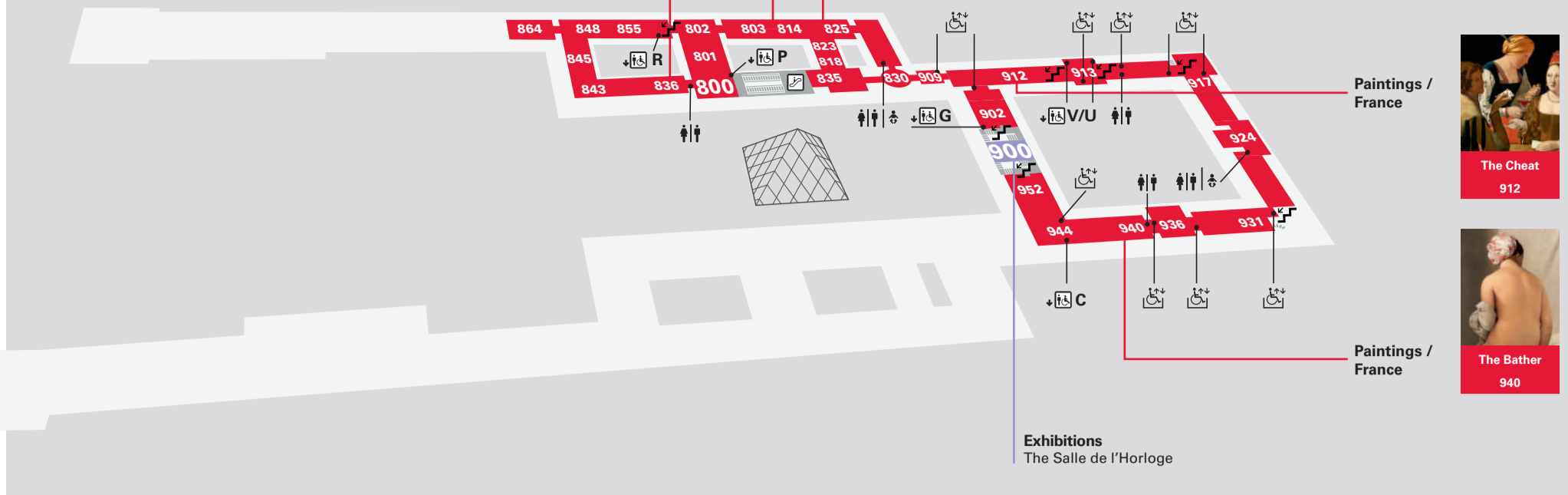
RICHELIEU
Rooms 800 to 864

SULLY
Rooms 900 to 952

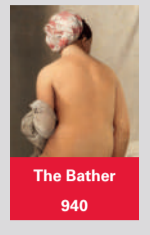
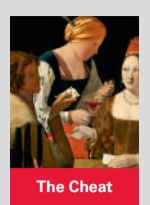


Paintings / Northern Europe Paintings / France

LEVEL
2
MUSEUM



Paintings / France

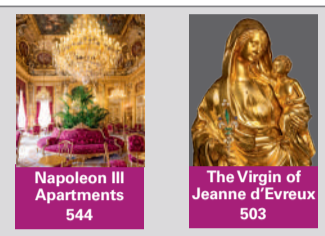


Paintings / France

Exhibitions
The Salle de l'Horloge

RICHELIEU
Rooms 500 to 564

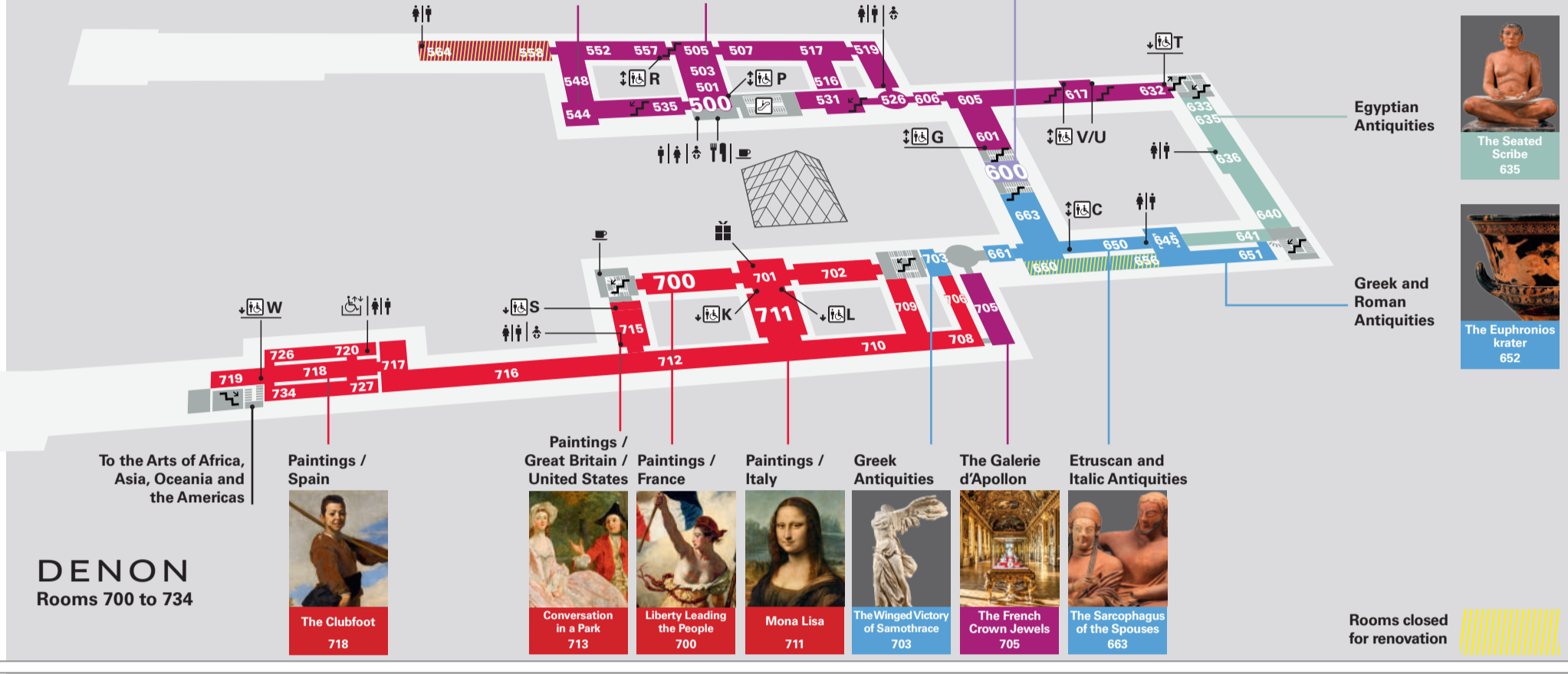
SULLY
Rooms 600 to 663



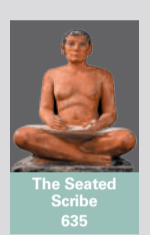
Decorative Arts / Europe

Exhibitions
The Salle de la Chapelle

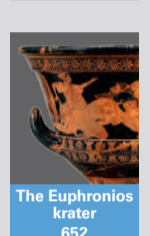
LEVEL
1
MUSEUM



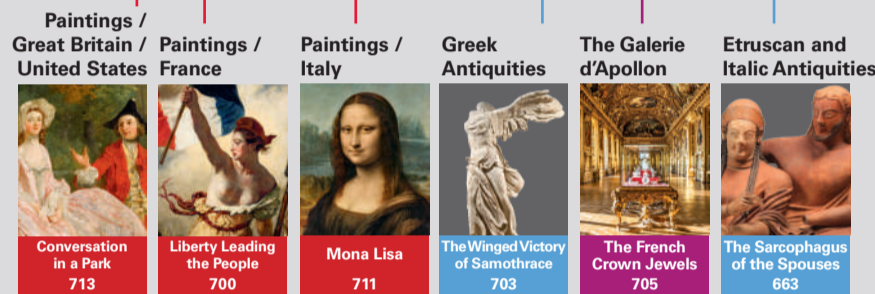
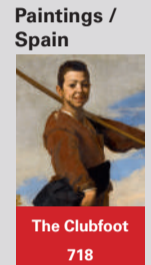
Egyptian Antiquities



Greek and Roman Antiquities



DENON
Rooms 700 to 734



Rooms closed for renovation

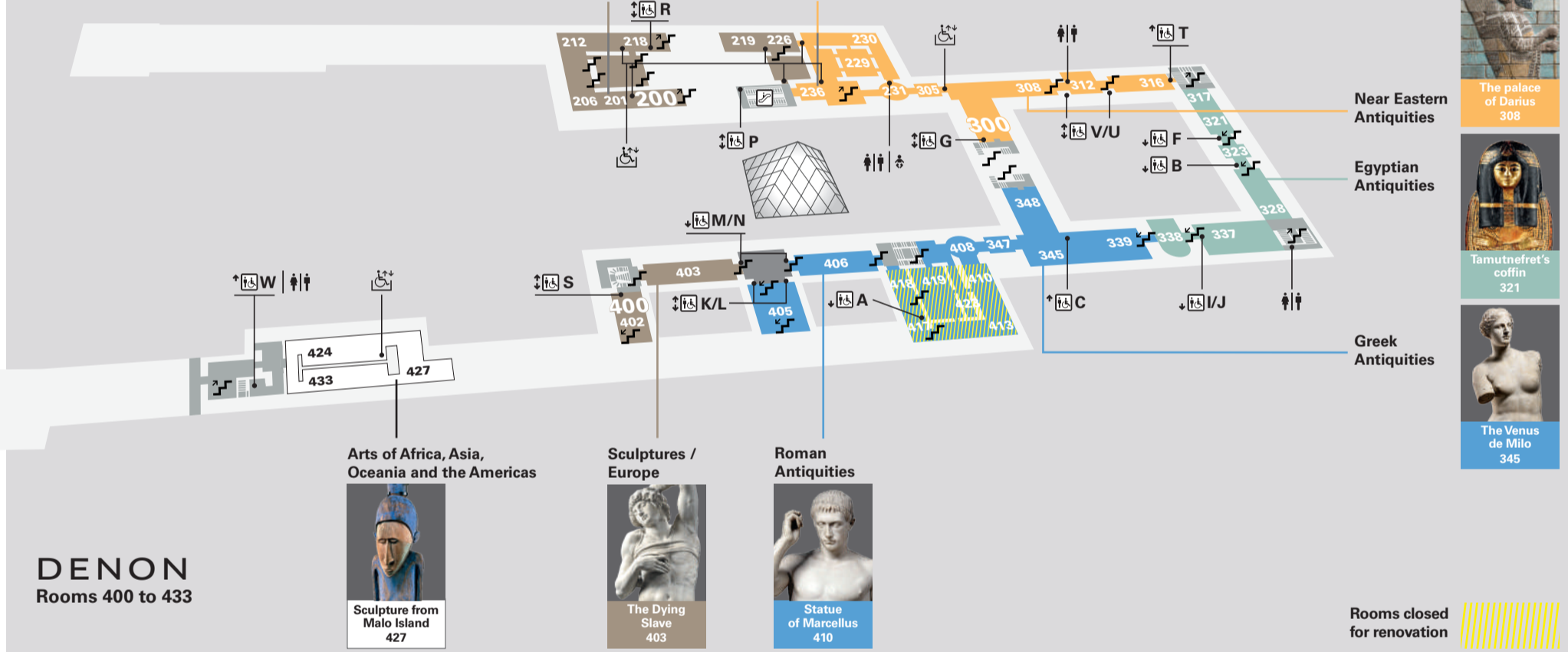
RICHELIEU
Rooms 200 to 236

SULLY
Rooms 300 to 348

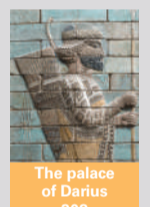


Sculptures / France Near Eastern Antiquities

LEVEL
0
MUSEUM



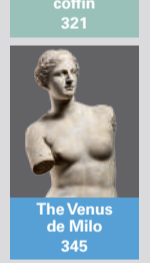
Near Eastern Antiquities



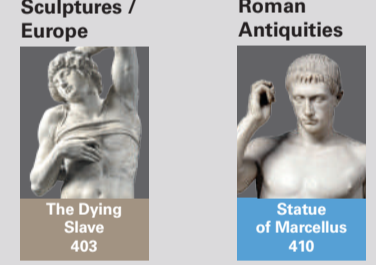
Egyptian Antiquities



Greek Antiquities



DENON
Rooms 400 to 433



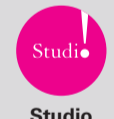
Rooms closed for renovation

RICHELIEU
Rooms 100 to 106

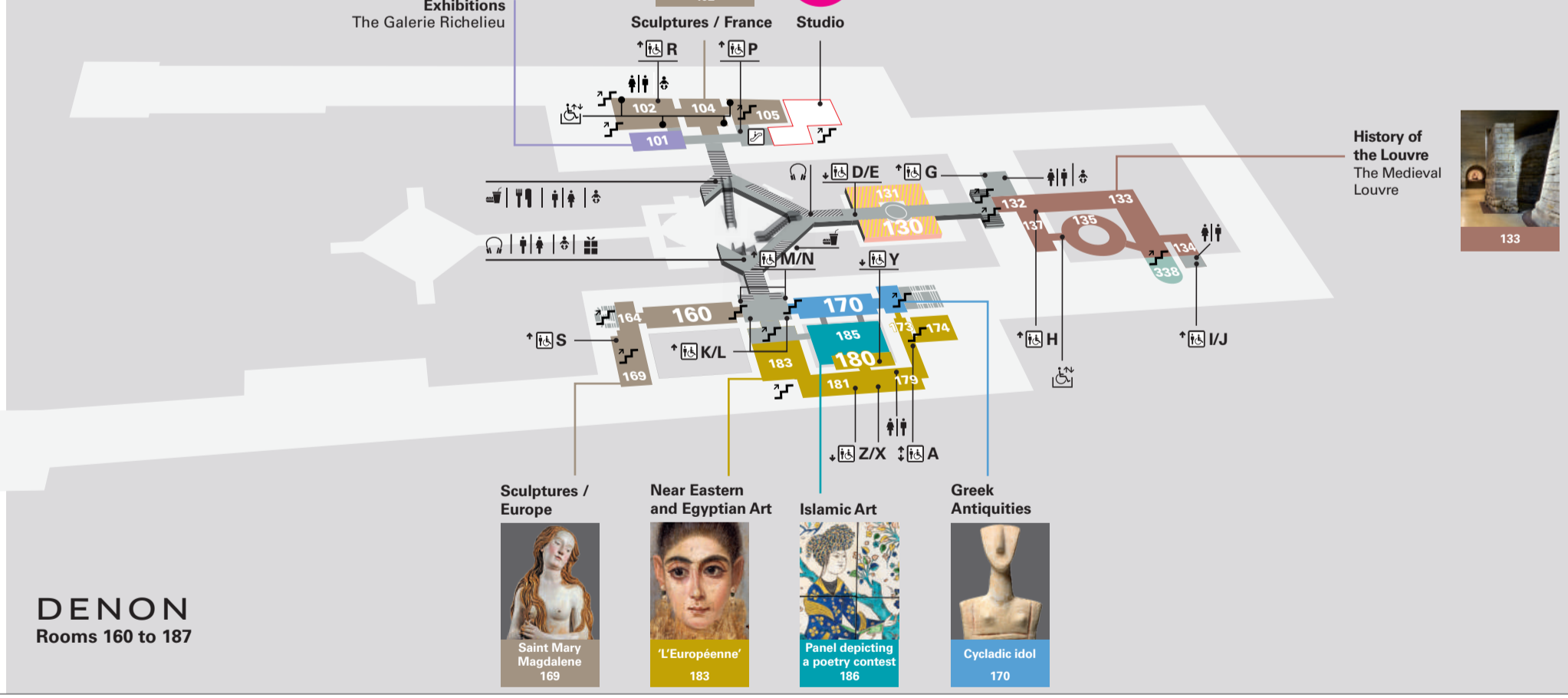
SULLY
Rooms 130 to 137



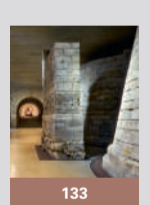
Sculptures / France



LEVEL
-1
MUSEUM AND EXHIBITIONS



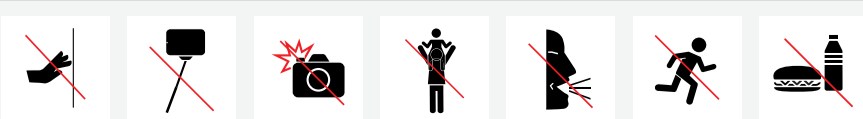
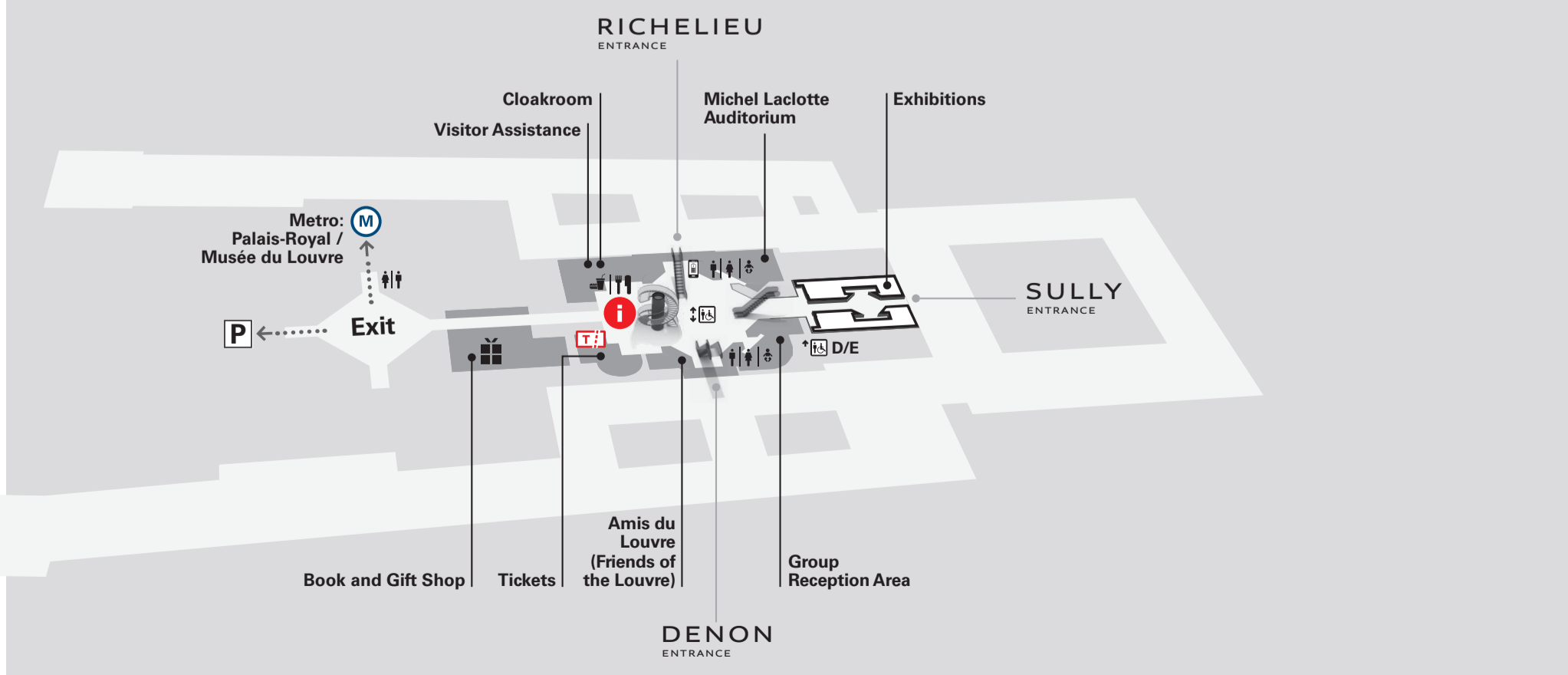
History of the Louvre
The Medieval Louvre



DENON
Rooms 160 to 187



LEVEL
-2
RECEPTION AREA AND EXHIBITIONS



These rules aim to help enhance and protect our heritage and make the museum visit a pleasant experience for everyone.