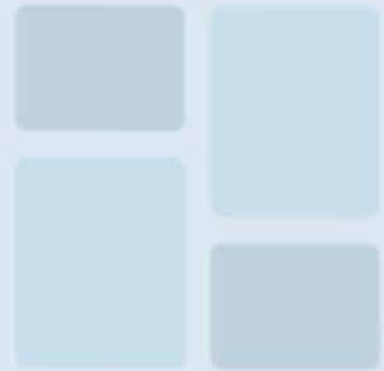




T20 PORCELAIN PAVERS



01 LANDSCAPE PAVERS

02 PATIO SURFACES

03 HOTELS & ROOFTOP HOSPITALITY VENUES

04 ROOFDECKS, BALCONIES & TERRACES

05 PORCELAIN COBBLESTONES

06 INSTALLATION

07 SITE SPECIFIC SOLUTIONS

08 SPECIFICATIONS



STYLE & ELEGANCE IN OUTDOOR PAVING

Create outdoor areas and contemporary landscapes of exceptional beauty without compromising on technical performance.

Archatrak T20 structural strength ¾" thick porcelain pavers offer the perfect balance of exemplary technical features with outstanding aesthetic appeal. Available in slabs, planks and cobblestones in sizes from 8"x 8" to as large as 48"x 96".

- Rich, deep, colors that won't fade.
- Resistant to staining and growth of moss and algae.
- Resistant to freeze/thawing and unaffected by salt.
- Scuff and scratch resistant.
- Exceptionally low maintenance.



01 LANDSCAPE PAVING



Cotto

Construct inspirational landscapes and hardscapes with Archatrak T20 porcelain pavers - more style, richer, deeper colors, more natural features and tonal variation.

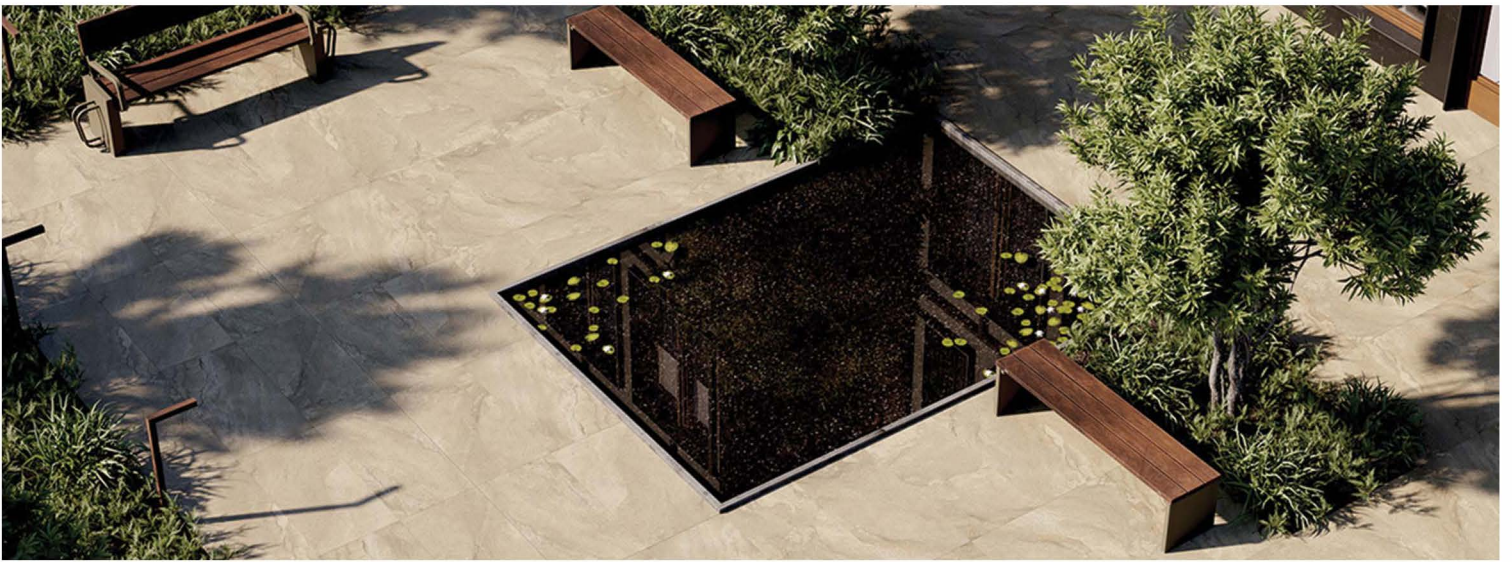
- Highly Stain Resistant
- No Freeze/thaw Cracking
- No Fading or Color Change
- Lower Maintenance



Piedmont Dark



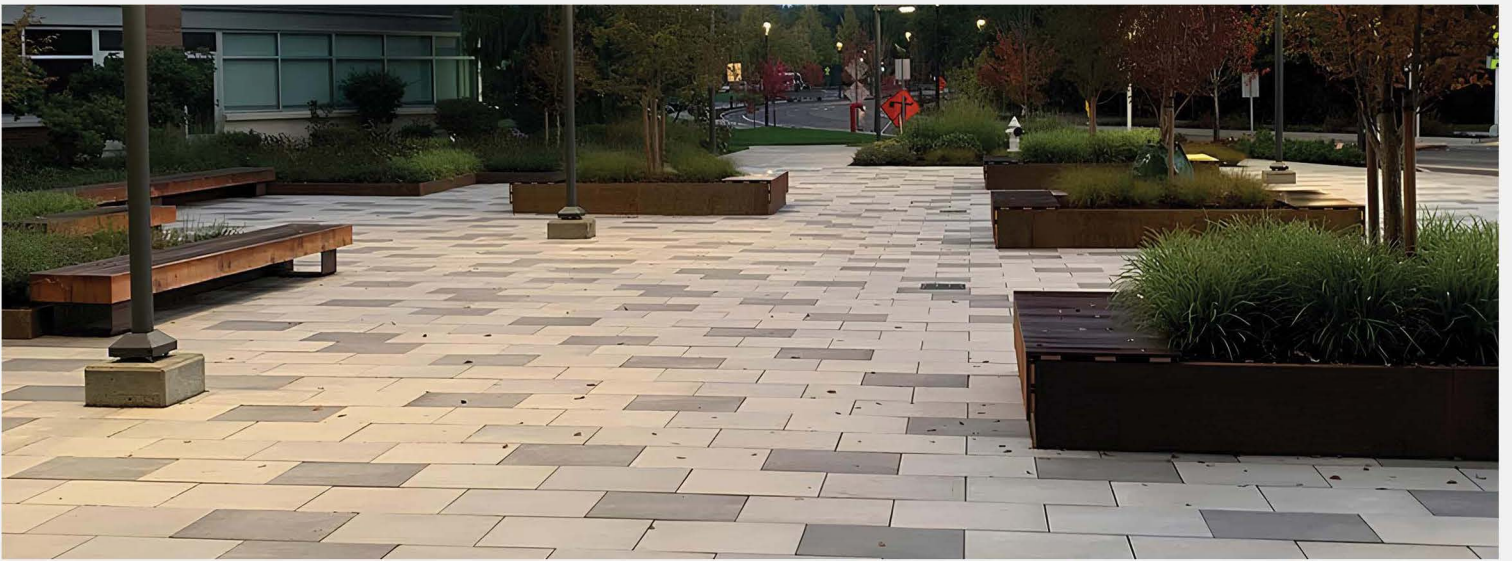
Piedmont Grey



Desert Natural



Pennstone



Cemento + Cenere + Sandalo



Pietra Bressa



River



Piedmont Grey



Sandy Island



Piedmont Dark

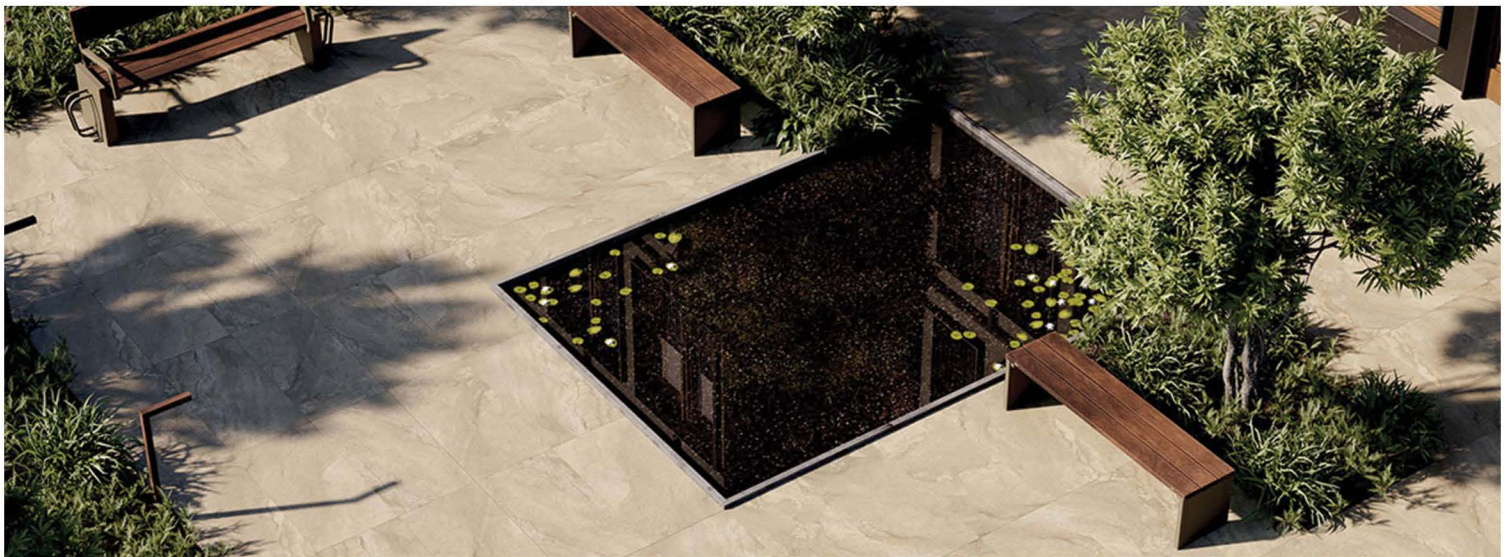
02 PATIO RESURFACING

Cover existing drab, cracked concrete with an elegant, stain resistant surface. Quick and simple installation using Archatrak stackable rubber support pads.

- Install over new or existing concrete - damaged or cracked.
- Perfectly level surfaces.
- Precisely spaced pavers.
- Low maintenance.



Soul Walnut

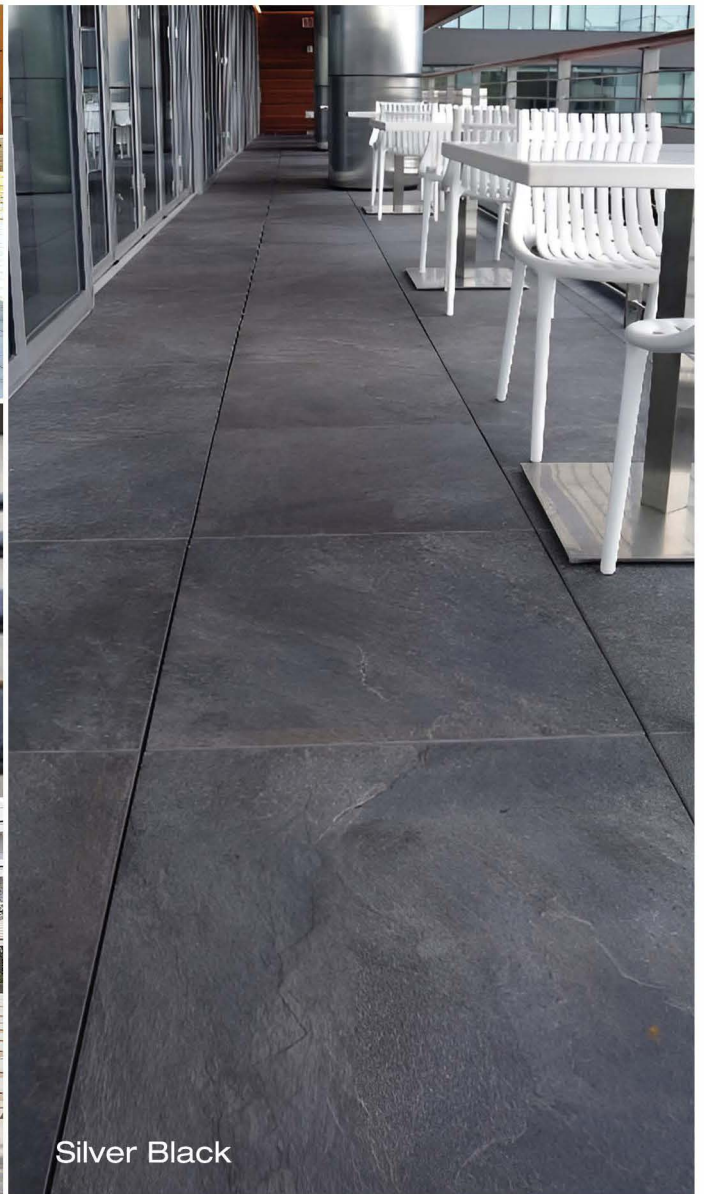


Desert Natural

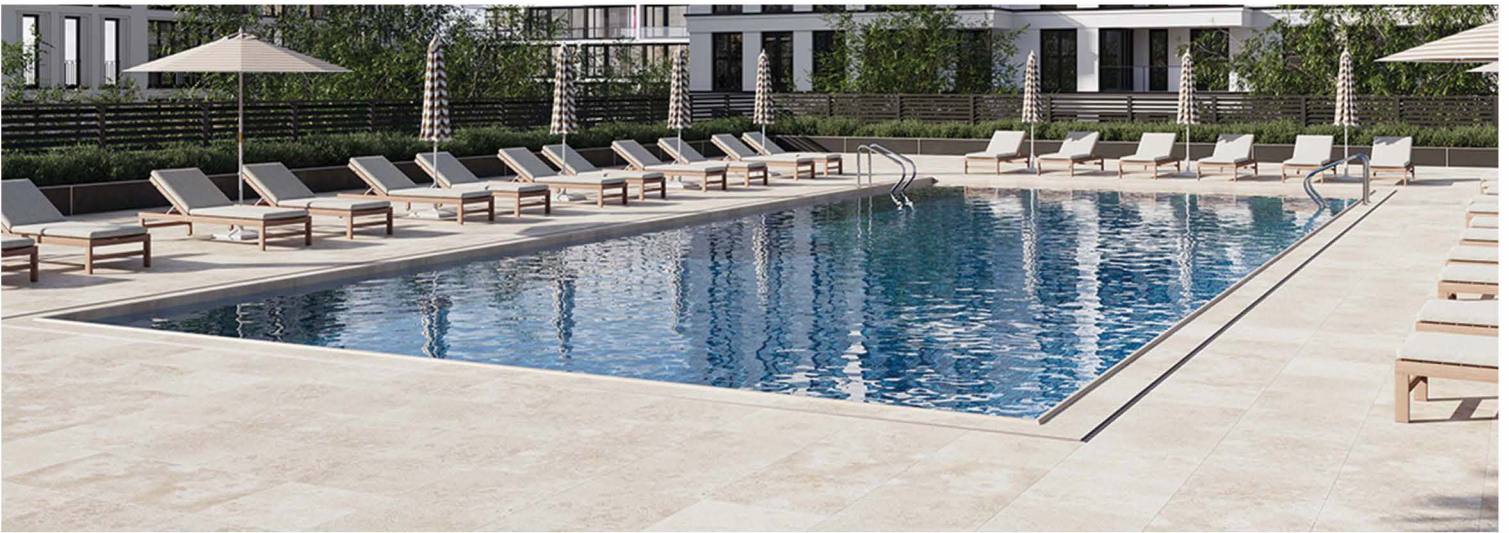
03 HOTELS & ROOFTOP HOSPITALITY VENUES

Create outdoor surfaces with elegance and style for rooftop bars, restaurants, swimming pools, outdoor lounges and other social gathering spaces. Pedestal supported porcelain pavers coupled with Archatrak 'SpanSafe' steel plates or 'SpanTrak' FRP grating panels offer uncompromising style and protection against accidental damage or wind uplift of pavers.

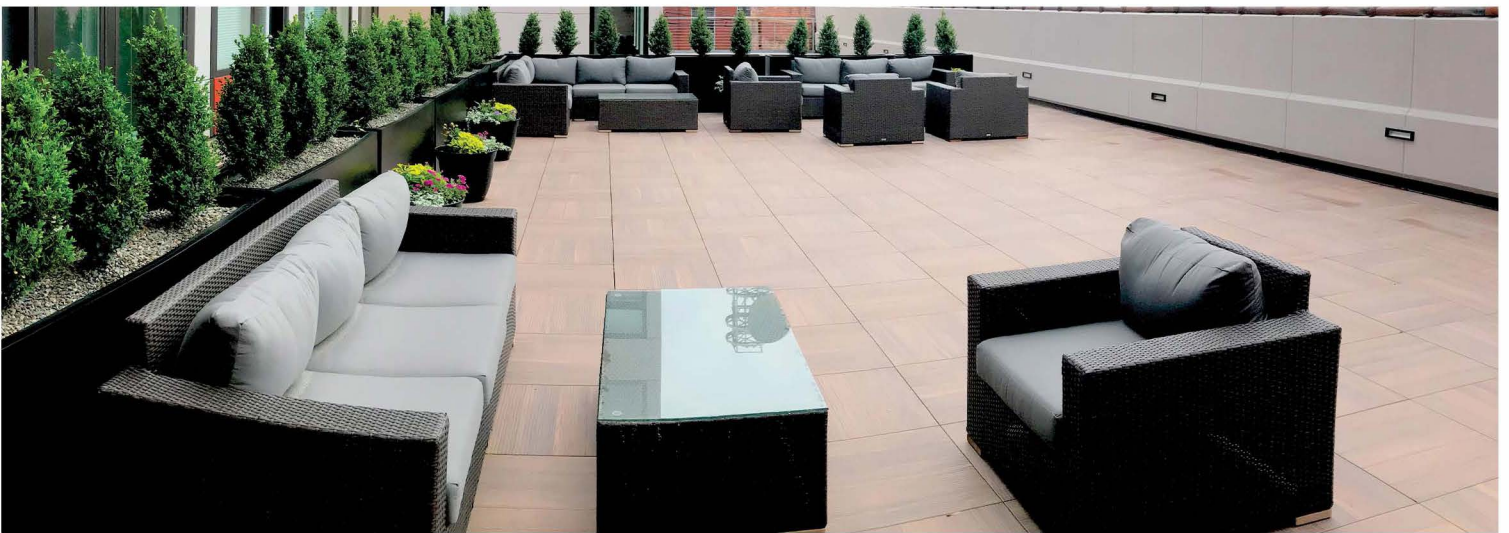
- Classically elegant surfaces with extensive color options
- Stain resistant, fade resistant wear resistant, non-combustible.
- No wood or steel bearer support structures required.
- Ultra-low maintenance



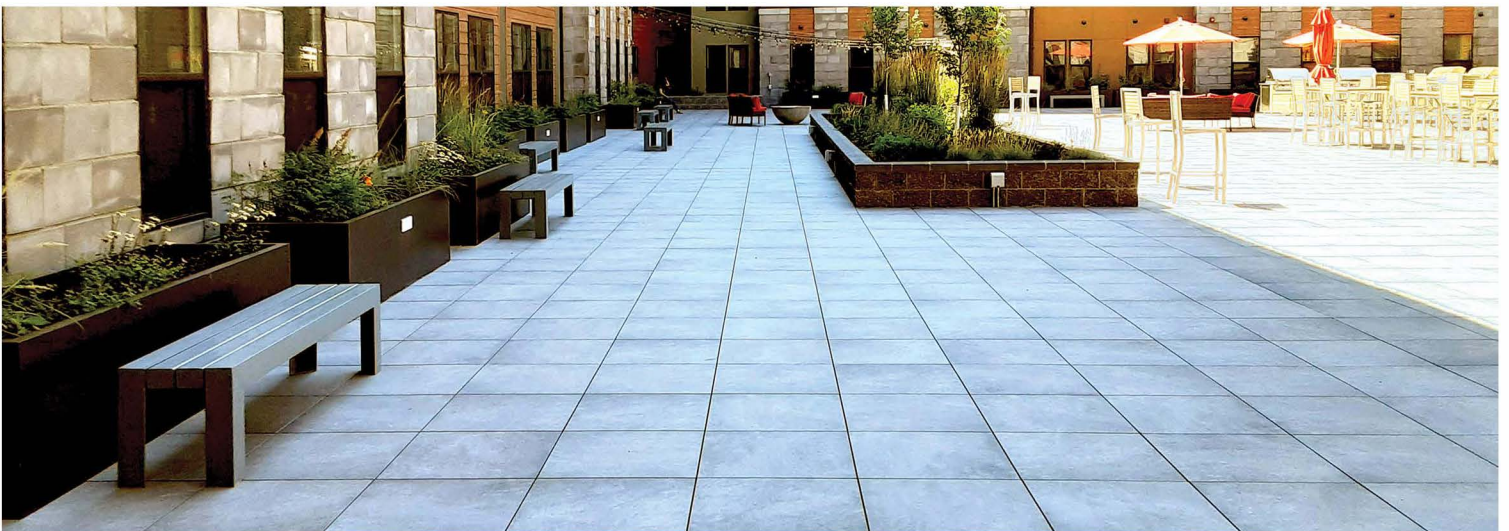
Silver Black



Travertine Crema



Lapacho

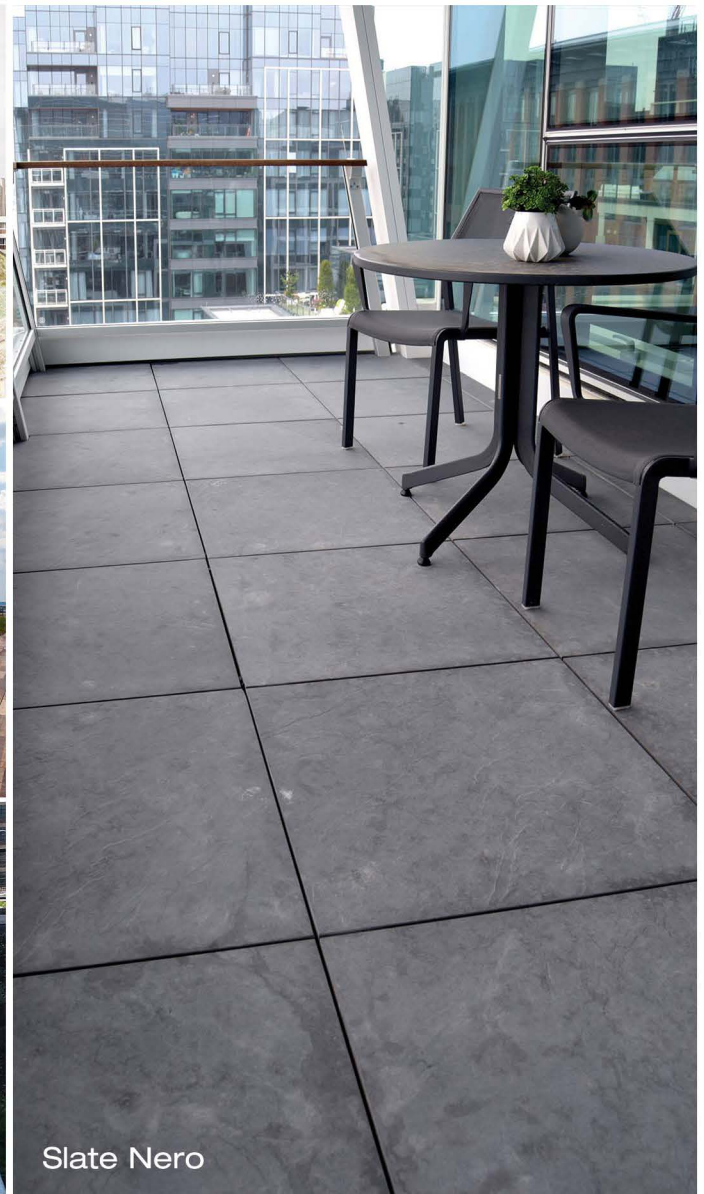
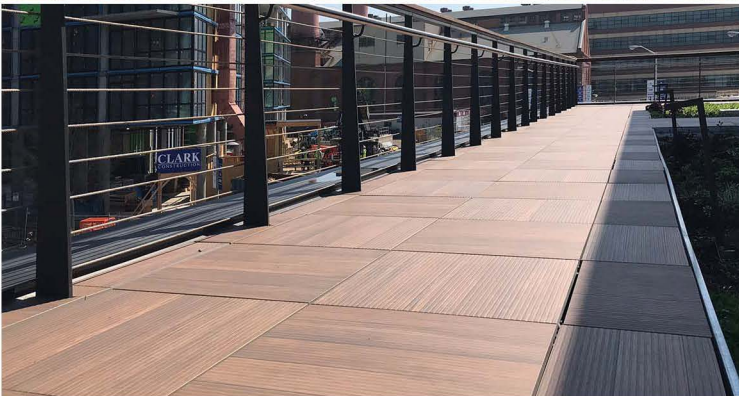


Bluestone

04 ROOF DECKS, TERRACES & BALCONY FLOORING

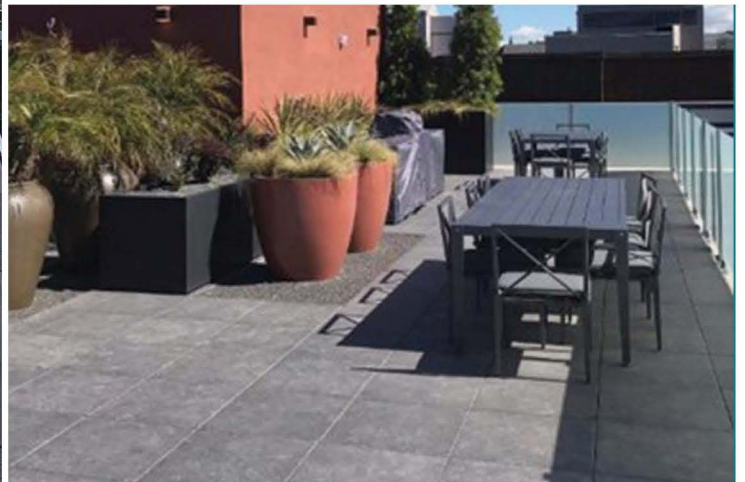
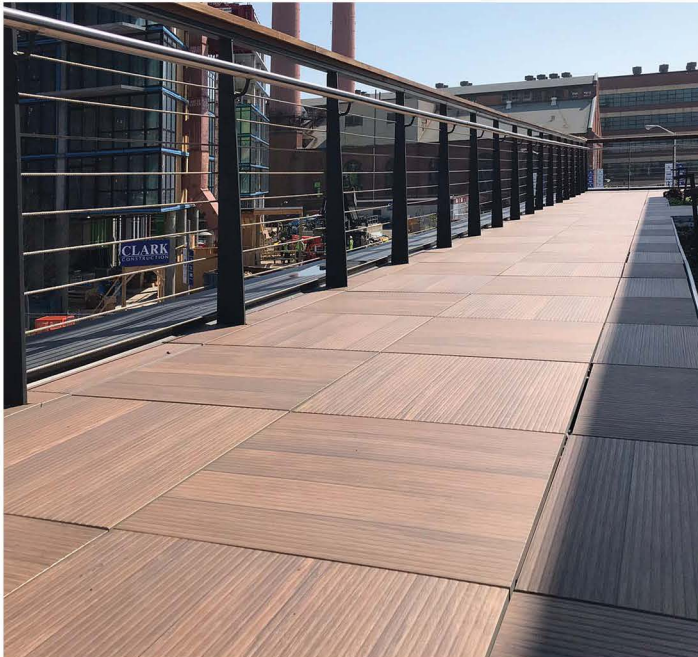
Make use of valuable rooftop space with elegant, lightweight porcelain pavers. Easily retrofit over existing rooftops using adjustable height paver supports.

- No need for wood or steel support structures.
- Completely cover ductwork, piping, conduits and surface irregularities.
- Ensure perfectly level surfaces.
- Avoid damage to waterproof membranes.
- Combine with 'Incendio' steel pedestals for totally non-combustible decks.



04.01 Pedestal Supported Pavers

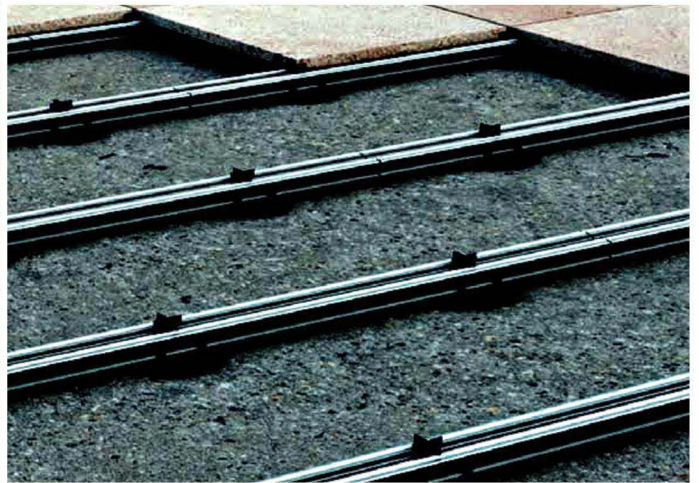
Porcelain pavers not exceeding 24" x 24" are supported by height adjustable pedestals placed at each corner only (additional pedestals are required for larger dimensions). Stackable rubber pads are typically used at lowest deck heights.



04.02 Rail Supported Porcelain Planks

Plank style porcelain pavers are laid over aluminum rails supported by adjustable height pedestals. Used for porcelain planks less than 16" wide where a pure pedestal support system would require an excessive number of pedestals and/or incur difficulties in placement of the pedestals.

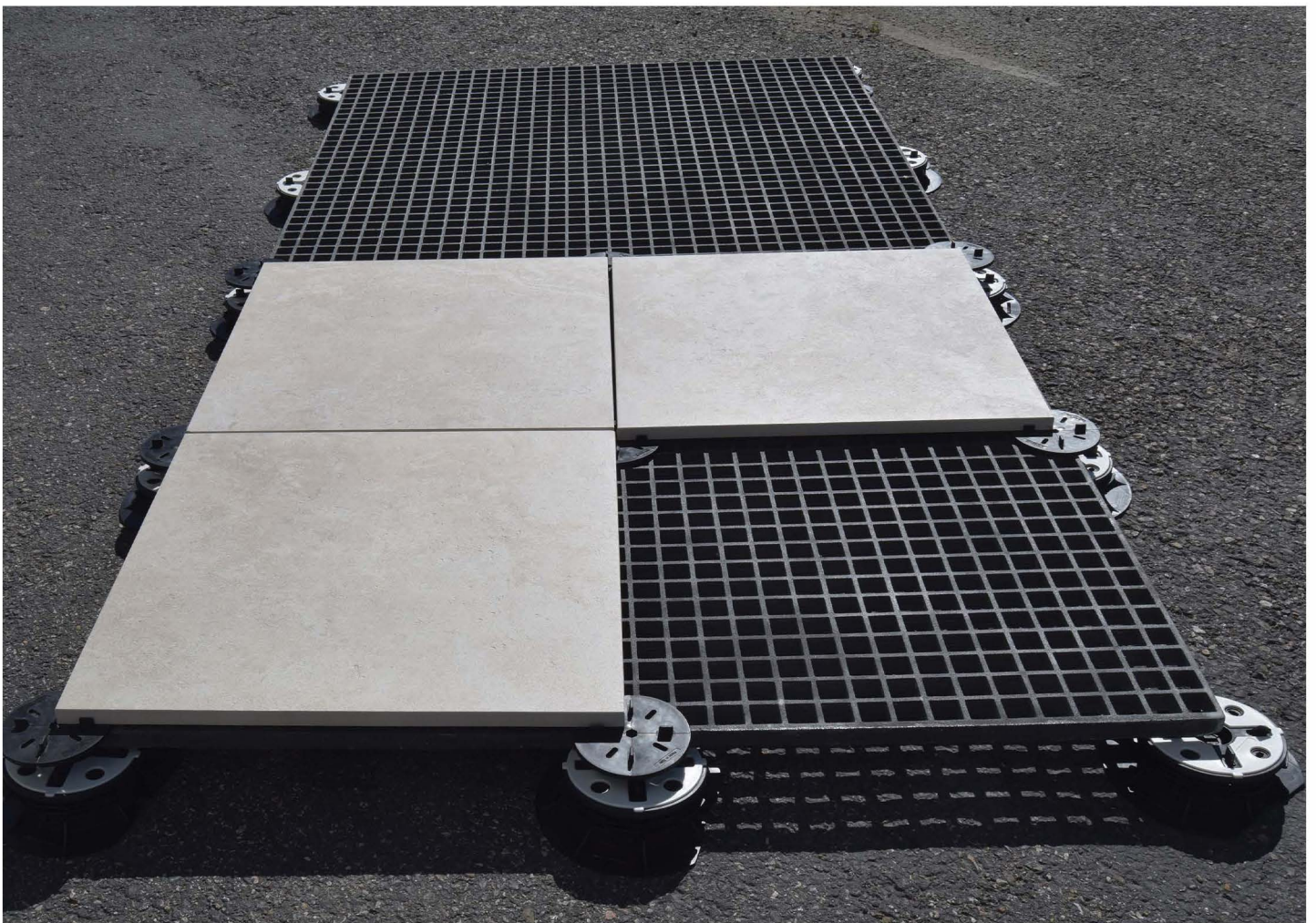
- No need for wood or steel support structures.
- Completely cover ductwork, piping, conduits and surface irregularities.
- Ensure perfectly level surfaces.
- Avoid damage to waterproof membranes.
- Combine with 'Incendio' steel pedestals for totally non-combustible decks.



04.03 FRP Grating Supported Pavers

Porcelain pavers are laid directly over Archatrak 'SpanTrak' FRP grating panels which in turn are supported by Archatrak 'Prime' pedestals. Archatrak ¼" thick rubber support pads with inbuilt spacer tabs are laid between the pavers and the grating panels to provide precise spacing between pavers and minimize noise transmission.

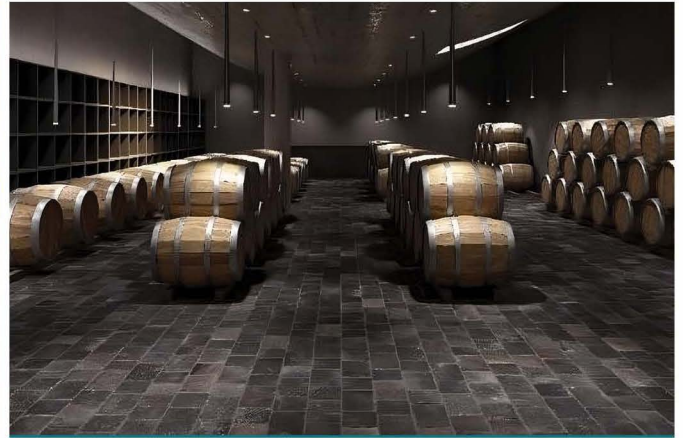
Used particularly in commercial applications with high usage and high pedestrian traffic and at elevated deck heights where safety is of critical importance.



05 PORCELAIN COBBLESTONES

Recreate the classic beauty of centuries old European stone cobblestone pavements with rustic look porcelain cobbles.

- Precisely dimensioned for faster, easier installation.
- Thinner and lighter than stone or concrete pavers
- Rustic textured surfaces, distressed edges, heritage colors, subtle tones and shading.
- Frost, stain and wear resistant.



06 INSTALLATION OPTIONS

The unique combination of strength, density, light weight, and thin profile of Archatrak T20 porcelain pavers provides extensive versatility in installation with both elevated and on-grade applications.

DRY INSTALLATION ON SAND/GRAVEL BEDS

- For broad area landscaping, plazas, terraces.
- Pavers are laid directly over a well compacted base of crushed rock and sand.

THINSET & GROUT OVER CONCRETE SLABS

- For vehicular and high traffic on-grade landscaping and walkways.
- Pavers are laid with mortar or approved adhesive over a reinforced concrete base and grouted.

ELEVATED ON ADJUSTABLE HEIGHT PEDESTALS

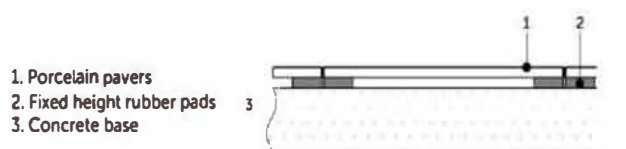
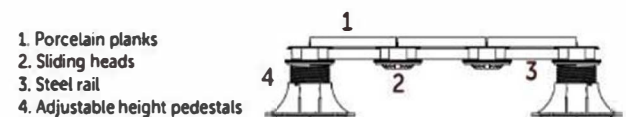
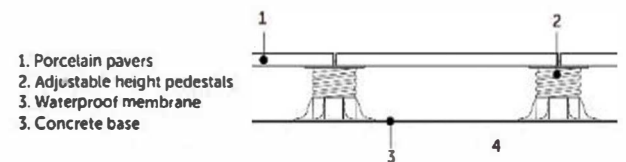
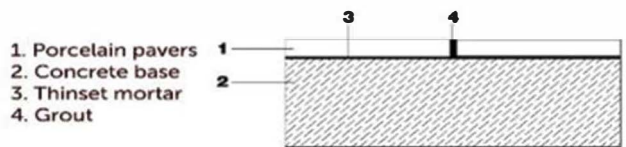
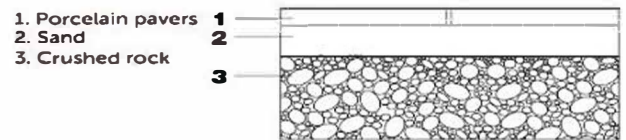
- For elevated decks on rooftops and other hard, stable surfaces with deck heights up to 30" or more.
- Adjustable height pedestals are placed under each corner of the pavers and sides where lengths exceed 24".

ELEVATED ON PEDESTAL SUPPORTED RAILS

- For elevated decks on rooftops and other hard, stable surfaces with plank style pavers, 16" or less in width.
- 8' long steel rails are laid over adjustable height pedestals. Pavers are laid on sliding heads at each corner and along sides at intervals not exceeding 24".

ELEVATED ON FIXED HEIGHT RUBBER PADS

- For existing concrete resurfacing at elevations less than 1.5".
- Pads are placed under each corner of the pavers and stacked as required to ensure a level surface. Shimms provide minor height adjustment and prevent rocking. Transition to adjustable height pedestals at heights exceeding 1.5".



07 SITE SPECIFIC SOLUTIONS

WIND UPLIFT

Any elevated paving laid without adhesives or other secure fixing to the substrate will be subject to the force of wind, with the risk in some cases of the pavers becoming airborne.

Archatrak 'SpanSafe' steel protection plates offer enhanced resistance to wind uplift of porcelain pavers installed on pedestal supported decks. The pavers are first bonded to the steel trays with beads of adhesive applied at each corner. The plates are then secured to the corners of "Incendio" steel pedestals with a screw and washer assembly.

Testing in accordance with ASTM E330 showed that the Archatrak wind uplift mitigation for T20 porcelain pavers system can provide wind uplift resistance up to 87 lb.psf.



SHOCK PROTECTION

While Archatrak T20 porcelain pavers are exceptionally durable, dense and rigid, they can nevertheless suffer damage due to mishandling or careless treatment. In elevated decking installations, and especially in commercial applications with high pedestrian traffic or popular public venues, the shock resistance of porcelain pavers must always be taken into consideration. If tools, heavy furniture or other heavy objects are dropped on the T20 pavers from a significant height, chips, scratches, surface damage and/or cracking and breakage may occur.

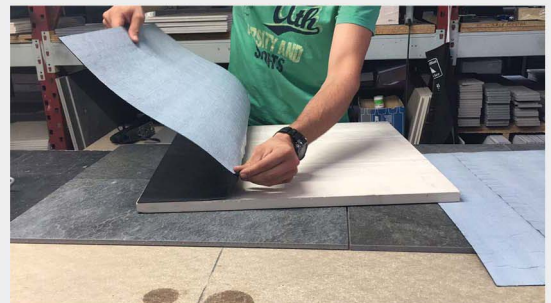
In installations where hard, heavy objects are likely to be in use or where floor heights exceed 4", especially in high traffic commercial locations, protection sheets or panels should be installed on the underside of the pavers to mitigate the risk of damage or injury, should any cracking or breakage of pavers occur.

Archatrak offers several solutions for installing under T20 pavers depending on the application.

'SHOCK CONTROL 2.0'

A flexible, self-adhesive, fiberglass reinforced sheet, pre-cut to cover the underside of the pavers is adhered to the underside of the T20 pavers.

After peeling off the protective backing, the sheet is pressed onto the underside of a dry paver.



'SPANSAFE' STEEL SHEETS

Galvanized steel sheets are laid over the pedestals before installing the T20 pavers. Plates used with Archatrak Prime pedestals have lobes at each corner with cut-outs for the spacer tabs on the pedestal heads, providing an extra level of security against movement of the plates if paver breakage occurs. 1/16" thick rubber shims can be placed under the corners of the pavers to minimize noise transmittance.



'SPANTRAK' FRP GRATING PANELS

FRP mesh grating laid on pedestals. The porcelain pavers are typically laid over 1/4" thick rubber pads with inbuilt spacer tabs to provide the required paver spacing and minimize noise transmittance.



SNOW MELT

The Archatrak 'Heatizon' snow melt system simply and efficiently maintains a snow free surface on pedestal supported T20 porcelain paver installations – commercial or residential.

Insulated electrical heating cables are run along V-shaped channels pressed into aluminum panels which are installed under the pavers. A sheet of polyurethane foam attached to the underside of the aluminum sheets minimizes heat loss under the system.

The 'Heatizon' snow melt system requires only 1 3/4" min. clearance under the pavers for the panels, insulation and drainage.

Heating can be restricted to single pavers or even part of a pavers and the area can be as large as required, subject only to the electrical supply connection.



08 SPECIFICATIONS

Archatrak T20 porcelain pavers are manufactured in several locations. Technical characteristics typical of production across manufacturing facilities in which Archatrak porcelain pavers are produced, are provided below. Please contact us for technical information on any specific colors or sizes.

CHARACTERISTIC		TEST METHOD	VALUE
Thickness			3/4"
Weight			9 lb/sq.ft
Water absorption		ISO10545-3	<0.1%
Breaking strength		ISO 10545-4	> 2200 lbf
Modulus of rupture		ISO 10545-4	> 7000 psi
Static load capacity *	Center Side Side Center Diagonal	EN 12825	>1700 lbf > 1200 lbf > 1500 lbf
Bending strength		EN1339	Class 14
Impact resistance		ISO 10545-5	>0.55
Resistance to abrasion		ISO 10545-6	conforms
Resistance to abrasion		ISO 10545-6	conforms
Frost resistant		ISO 10545-12	resistant
Resistance to thermal shock		ISO 10545-9	resistant
Resistance to chemicals		ISO 10545-13	UA
Resistance to acids & alkalis		ISO 10545-13	ULA/UHA
Resistance to staining		ISO 10545-14	Class 5
Fire resistance		EN3501-1	A1-A1 FL
Barefoot ramp test		DIN 51097	A+B+C
Shod ramp test		DIN 51130	R11
Static coefficient of friction		ASTM C1028-2007	>0.6 wet >0.6 dry
Slip resistance		DM236/89 B.C.R.A.	>0.40

*Average values compliant with relevant standard
 ** 24" x 24" pavers

Archatrak

ARCHATRAK INC.

 866 206 8316



1288 N 14th Ave., Unit 105
Bozeman MT 59715



www.archatrak.com



solutions@archatrak.com
