

## **Historic, Archive Document**

Do not assume content reflects current scientific knowledge, policies, or practices.



2,91



PRIDE OF HAARLEM

1931 Wholesale List

GEORGE LAWLER

*Bulb Grower*

TACOMA, WASHINGTON

## THE BURGHARD FLORAL CO.

WHOLESALE AND RETAIL FLORISTS

POTTED PLANTS

CUT FLOWERS

BEDDING STOCK

324 E. FONTANERO ST.

TELEPHONE 5292

COLORADO SPRINGS, COLO.

Jan. 28, 1931

Mr. Geo. Lawler,  
Gardenville,  
Tacoma, Wash.

Dear Sir:

Encl. please find check of \$300.00 for balance of our bill as promised in our letter of Dec. 12th, 1930.

Am sorry we had to let you wait so long but collections have been very slow. Business has picked up very nicely since Xmas and we do hope it will continue in the future.

Your bulbs have been very good so far and I think we will make a nice profit on them.

Right after Easter we will send you our order for next fall and I think it will be close to a duplicate of what we had.

Kindly receipt bill and return.

Very truly yours,

*E. W. Burghard*

# Narcissus - Daffodil - Jonquil Bulbs

	—PER THOUSAND—	
	Round	Double Nose
<b>Alba Plena Odorata</b> (Double Poeticus). Large, double, snow white. Very sweet scented.....	\$ 20.00	\$ 30.00
<b>Aspasia</b> (Poetaz). Broad white perianth; fluted golden cup .....	40.00	50.00
<b>Asquith</b> (Poetaz). White perianth with yellow eye; large .....	40.00	50.00
<b>Campernelle Regulosus</b> (Jonquil): Single, rich yellow.....	25.00	35.00
<b>Camp. Reg. Plenus</b> (Jonquil). Double yellow. The true double Campernelle .....	30.00	40.00
<b>Cassandra</b> (Poeticus). Broad clear white perianth; cup deeply rimmed dark red.....	45.00	50.00
<b>Chaucer</b> (Poeticus). Pure white perianth; large flat cup of vivid scarlet; very early.....	35.00	45.00
<b>Conspicuous</b> (Barri). Large soft yellow perianth; cup is edged with orange-scarlet; free flowering.....	15.00	25.00
<b>Elvira</b> (Poetaz). White perianth; bright yellow cup thinly edged orange.....	35.00	45.00
<b>Emperor</b> (Yellow Trumpet). Primrose perianth; rich yellow trumpet. Good forcer.....	55.00	75.00
<b>Empress</b> (Bicolor Trumpet). White perianth; rich yellow trumpet .....	45.00	70.00
<b>Glory of Leiden</b> (Yellow Trumpet). Pale yellow perianth; rich yellow trumpet. Good forcer.....	60.00	80.00
<b>Glory of Sassenheim</b> (Bicolor Trumpet). Creamy white perianth; yellow trumpet; early.....	55.00	75.00
<b>Golden Spur</b> (Yellow Trumpet). Rich yellow; early forcer .....	50.00	70.00
<b>Grandee</b> (Bicolor Trumpet). Pure white perianth; yellow trumpet .....	40.00	60.00
<b>Horsfeldii</b> (Bicolor Trumpet). Perianth white; trumpet rich yellow .....	40.00	60.00
<b>King Alfred</b> (Yellow Trumpet). Intense golden yellow.....	75.00	100.00
<b>King George</b> (Poeticus). White perianth; flat yellow cup edged orange.....	30.00	40.00
<b>Laurens Koster</b> (Poetaz). Pure white perianth; yellow cup .....	40.00	50.00
<b>Lucifer</b> (Incomparabilis). White perianth; an intense orange-red cup. Large.....	35.00	45.00
<b>Madame de Graaff</b> (White Trumpet). Perianth white; trumpet pale primrose passing to white.....	60.00	80.00
<b>Madame Plemp</b> (Bicolor Trumpet). Large white perianth; long, rich golden-yellow trumpet.....	45.00	65.00
<b>Maximus</b> (Yellow Trumpet). Rich deep golden-yellow; perianth twisted.....	50.00	70.00
<b>Minister Talma</b> (Yellow Trumpet). Yellow perianth; golden yellow trumpet; early.....	60.00	80.00

## Narcissus - Daffodil - Jonquil Bulbs (continued)

	PER THOUSAND	
	Round	Double Nose
<b>Minnie Hume</b> (Leeds). Large broad white perianth; pale lemon-yellow cup.....	\$ 30.00	\$ 45.00
<b>Mrs. Langtry</b> (Leeds). Broad white perianth; white cup edged yellow.....	30.00	45.00
<b>Olympia</b> (Yellow Trumpet). Giant uniform yellow.....	120.00	150.00
<b>Orange Phoenix</b> (Double). White with orange center.....	45.00	65.00
<b>Ornatus</b> (Poeticus). White perianth; yellow cup rimmed red; very early.....	30.00	40.00
<b>Princeps</b> (Yellow Trumpet). Sulphur perianth; yellow trumpet; early.....	25.00	40.00
<b>Raphael</b> (Poetaz). White perianth; yellow eye.....	40.00	50.00
<b>Recurvus</b> (Poeticus) (Pheasant's Eye). White reflexing perianth with red eye. Free bloomer.....	20.00	25.00
<b>Sir Watkin</b> (Incomparabilis). Yellow cup tinged orange; rich sulphur perianth.....	45.00	60.00
<b>Spring Glory</b> (Bicolor Trumpet). Broad white perianth; large and long trumpet of bright yellow; very early.....	55.00	75.00
<b>Sulphur Phoenix</b> (Double). Creamy-white; rose-shaped flowers. Much prized for cutting.....	35.00	55.00
<b>Tresserve</b> (Yellow Trumpet). Yellow perianth; rich yellow trumpet. Very large flower.....	80.00	110.00
<b>Van Waveren's Giant</b> (Yellow Trumpet). Primrose perianth; bright yellow trumpet. Immense flower.....	150.00	175.00
<b>Victoria</b> (Bicolor Trumpet). Creamy-white perianth; large, broad, clear yellow trumpet; forces freely.....	45.00	65.00
<b>Von Sion</b> (Double). Deep golden yellow; good forcer.....	40.00	60.00
<b>White Lady</b> (Leeds). Broad white perianth; canary yellow cup. Free bloomer.....	30.00	45.00
<b>Will Scarlet</b> (Incomparabilis). Creamy white reflexing perianth; fiery orange-red cup. Striking flower.....	45.00	70.00
<b>Mixed.</b> All kinds.....	20.00	25.00
<b>Mixed.</b> Large and medium trumpets.....	22.50	25.00
<b>Mixed.</b> Poeticus and Poetaz.....	20.00	22.50
<b>Mixed.</b> Doubles.....	22.50	25.00

**Naturalizing Mixture.** This mixture contains early, late and mid-season varieties—planned to make the blooming season longer. We include all those varieties best adapted for growing wild in the meadows and woodlands.

Large bulbs.....	\$37.50 per 1000
Medium size bulbs.....	25.00 per 1000
Planting size bulbs.....	15.00 per 1000

### Paper White Narcissus

11-12 cm. circumference—	Ask for prices
12-14 cm. circumference—	Ask for prices
14-15 cm. circumference—	Ask for prices

# Iris Bulbs

## Dutch

	—PER THOUSAND—	
	1st Size	2nd Size
<b>Albert Cuyp.</b> White with yellow blotch.....	\$ 25.00	\$ 20.00
<b>David Teniers.</b> Pale lavender, falls citron yellow; early....	30.00	20.00
<b>Hart Nibbrig.</b> Beautiful clear blue.....	30.00	20.00
<b>Hobbema.</b> White, light blue shaded and yellow.....	30.00	20.00
<b>Imperator.</b> Fine blue; large.....	30.00	20.00
<b>Rembrandt.</b> Deep blue with orange-yellow blotch.....	27.50	20.00
<b>Wedgewood.</b> Blue; large flower.....	100.00	80.00
<b>White Excelsior.</b> Pure white.....	45.00	35.00
<b>Mixed</b> .....	20.00	15.00

## Spanish

<b>Blanche Fleur.</b> White tinged light blue.....	25.00	20.00
<b>Cajanus.</b> Pure yellow; tall grower.....	35.00	25.00
<b>Flora.</b> Lavender.....	25.00	20.00
<b>Mixed</b> .....	20.00	15.00

## English

	Per 100	Per 1000
<b>Grand Lilas.</b> Silver azure flaked with mauve.....	5.00	40.00
<b>Mont Blanc.</b> Pure white.....	5.00	40.00
<b>Royal Blue.</b> Royal blue.....	4.00	35.00
<b>Mixed</b> .....	3.50	30.00

# Tulip Bulbs

## Single Early Tulips

	Per 1000
<b>Artus.</b> Deep scarlet; fine shaped flowers.....	\$ 24.00
<b>Brilliant Star.</b> Scarlet with yellow base; early forcer.....	28.00
<b>Couleur Cardinal.</b> Rich crimson-scarlet.....	34.00
<b>Duc de Berlin.</b> Scarlet; edged orange-yellow; very early forcer.....	30.00
<b>General de Wet.</b> Deep orange with yellow center; large flower.....	50.00
<b>Keizerskroon.</b> Scarlet, edged golden-yellow.....	44.00
<b>Mon Tresor.</b> Very large and pure golden-yellow.....	44.00
<b>Prince of Austria.</b> Orange-scarlet; yellow base; very good forcer.....	30.00
<b>Proserpine.</b> Carmine-rose, white center, flushed blue.....	44.00
<b>Van der Neer.</b> Violet-purple; large flower; excellent forcer.....	40.00
<b>Vermillion Brilliant.</b> Brilliant scarlet; excellent early forcer.....	32.00
<b>White Hawk.</b> Pure white; excellent forcer.....	34.00
<b>Mixed</b> .....	24.00

*Tulip Bulbs (continued)*  
*Double Early Tulips*

	<i>Per 1000</i>
<b>Couronne d'Or.</b> Deep yellow, flushed orange-red; excellent forcer.....	\$ 35.00
<b>Electra.</b> Beautiful violet-rose.....	44.00
<b>Mr. Van der Hoeff.</b> Pure golden-yellow; splendid forcer.....	34.00
<b>Mr. Van Tubergen.</b> Deep golden-yellow.....	38.00
<b>Murillo.</b> Delicate rose-pink, flushed white; best forcer.....	28.00
<b>Peach Blossom.</b> Bright rose-pink, flushed white; good forcer.....	34.00
<b>Tea Rose.</b> Soft pale yellow, tinged light rose.....	30.00
<b>Mixed</b> .....	25.00

*Cottage Tulips*

<b>Bouton d'Or.</b> Deep golden-yellow.....	28.00
<b>Coronation Scarlet.</b> Scarlet with black base.....	35.00
<b>Ellen Willmott.</b> Soft canary-yellow.....	35.00
<b>Gesneriana Lutea.</b> Beautiful tall yellow.....	28.00
<b>Gesneriana Rosea.</b> Rosy-carmine.....	26.00
<b>Gesneriana Spathulata Major.</b> Rich crimson-scarlet; dark blue center.....	30.00
<b>Grenadier.</b> Orange-scarlet; very attractive.....	34.00
<b>Inglescombe Pink.</b> Salmon-rose.....	25.00
<b>Inglescombe Scarlet.</b> Brilliant scarlet; black base.....	30.00
<b>Inglescombe Yellow.</b> Glossy canary-yellow; the yellow Darwin.....	26.00
<b>John Ruskin.</b> Apricot orange, flushed yellowish-pink.....	30.00
<b>La Merveille.</b> Scarlet, suffused apricot-orange.....	28.00
<b>L'Incomparable.</b> Orange-salmon.....	34.00
<b>Moonlight.</b> Sulphur-yellow; beautiful tulip.....	28.00
<b>Mrs. Moon.</b> Golden-yellow; very beautiful tulip.....	40.00
<b>Norham Beauty.</b> Purplish lilac, shaded bronzy-yellow.....	32.00
<b>Orange King.</b> Bright orange-red.....	28.00
<b>Picotee.</b> Pure white, margined rose.....	26.00
<b>Retroflexa.</b> Bright yellow, recurved petals.....	28.00
<b>Walter T. Ware.</b> Deep golden-yellow.....	65.00
<b>Mixed</b> .....	20.00

*Breeder Tulips*

<b>Abd-el-Kadir.</b> Dark bronze; edged light bronze.....	46.00
<b>Bacchus.</b> Dark violet-blue; inside petals violet-blue.....	45.00
<b>Bronze King.</b> Reddish bronze.....	32.00
<b>Bronze Queen.</b> Soft buff, tinged golden-yellow inside.....	26.00
<b>Cardinal Manning.</b> Dull wine red, flushed rosy brown.....	30.00
<b>Copernicus.</b> Dark coppery bronze, flushed old rose.....	40.00
<b>Garibaldi.</b> Pale lilac-bronze with yellow border.....	400.00
<b>Golden Bronze.</b> Light brownish yellow, slightly flushed heliotrope.....	46.00



*Breeder Tulips (continued)*

	<i>Per 1000</i>
<b>Grand Maitre.</b> Purple-violet.....	\$ 35.00
<b>James Watt.</b> Bluish bronze.....	80.00
<b>Le Mogul.</b> Pale silvery lilac, passing into white.....	40.00
<b>Louis XIV.</b> Dark, dull bluish-violet, tawny margin flushed gold-brown	30.00
<b>Madras.</b> Dark bronzy-yellow and old gold.....	40.00
<b>Marechal Victor.</b> Clear blue with brown border.....	360.00
<b>Marie Louise.</b> Old rose, flushed salmon-orange, edged with bronze- orange, olive base.....	30.00
<b>Medea.</b> Violet-pink with yellow center.....	35.00
<b>Old Times.</b> Bronzy yellow.....	35.00
<b>Opal.</b> Pearl-blue and white.....	30.00
<b>Panorama.</b> Rich chestnut-red.....	28.00
<b>Plutarchus.</b> Light bronze flushed dark pink.....	35.00
<b>Prince Albert.</b> Glowing mahogany-brown shaded dull bronze.....	46.00
<b>Prince of Orange.</b> Golden-orange with yellow edge.....	40.00
<b>Purple Perfection.</b> Violet, base blue, tinged yellow.....	35.00
<b>Queen Alexandra.</b> Sulphur-yellow, tipped brown.....	35.00
<b>Roi de Siam.</b> Purple violet, very fine.....	40.00
<b>Roi Soleil.</b> Deep violet-blue and bronze.....	60.00
<b>Sabrina.</b> Pale bronze.....	35.00
<b>St. James.</b> Old rose, bordered bronze.....	28.00
<b>Velvet King.</b> Deep purple.....	40.00
<b>Vulcain.</b> Reddish apricot, with broad margin of bright buff-yellow; extra forcing variety.....	60.00
<b>Yellow Perfection.</b> Light bronzy-yellow with golden-yellow margin.....	35.00
<b>Mixed</b> .....	28.00

*Darwin Tulips*

	<i>PER THOUSAND</i>	
	<i>1st Size</i>	<i>2nd Size</i>
<b>Afterglow.</b> Soft apricot-orange, edged salmon.....	\$ 30.00	
<b>Anton Mauve.</b> Very large, well formed flower, violet, bordered soft greyish-white; good forcer.....	40.00	
<b>Baronne de la Tonnaye.</b> Rose edged blush-pink, splendid late forcer.....	23.00	\$ 13.00
<b>Bartigon.</b> Beautiful crimson; early forcer.....	27.50	18.00
<b>Centenaire.</b> Rich violet-rose with blue center; easy forcer.....	23.00	13.00
<b>City of Haarlem.</b> Brilliant scarlet-red; extra large.....	40.00	
<b>Clara Butt.</b> Clear salmon-rose pink; good forcer.....	20.00	10.00
<b>Crepuscle.</b> Soft rosy-lilac; fine forcer.....	32.00	
<b>Dream.</b> Soft uniform lilac; large flower.....	34.00	
<b>Farncombe Sanders.</b> Brilliant scarlet; good forcer.....	25.00	15.00
<b>Faust.</b> Black violet; very large.....	40.00	
<b>Flamingo.</b> Pure soft shell-pink.....	32.00	

*Darwin Tulips (continued)*

	PER THOUSAND	
	1st Size	2nd Size
Harry Veitch. Rich blood-red, blue base; good forcer.....	\$ 28.00	
Homere. Scarlet-red; very handsome.....	32.00	
Jubilee. Very deep purple.....	50.00	
King George V. New brilliant red; enormous flower.....	55.00	
La Tristesse. Dull slaty blue with white base.....	30.00	
Le Notre. Clear pink; one of the earliest forcers.....	25.00	15.00
Madame Krelage. Bright lilac-rose, margined pale silvery rose; good forcer.....	28.00	
Melicette. Soft lilac; beautiful flower.....	30.00	
Pensee Amere. Purplish lilac; good forcer.....	35.00	
Petrius Hondius. Bright carmine-rose; good forcer.....	30.00	
Philippe de Comines. Velvety dark purple; early forcer...	30.00	
Pride of Haarlem. Bright carmine-red; blue base; splen- did forcer.....	25.00	
Princess Elizabeth. Vivid rosy-pink; excellent forcer.....	27.50	18.00
Prof. Rauwenhoff. Deep cherry-rose; early forcer.....	27.50	18.00
Remembrance. Dark lavender, shaded rose.....	40.00	
Rev. H. Ewbank. Vivid heliotrope-lilac; good forcer.....	30.00	
Roi d'Islande. Beautiful rich violet-rose.....	30.00	
Venus. Pure silvery rose.....	85.00	
Victoire d'Oliviere. Deep scarlet; good early forcer.....	32.00	
William Copeland. Bright violet; early forcer.....	25.00	15.00
William Pitt. Brilliant, dark scarlet; good forcer.....	30.00	20.00
Zulu. Rich velvety purple-black.....	34.00	
Mixed.....	20.00	

*Lily-Flowering Tulips*

	Per 1000
Adonis. Bright rosy-red.....	\$ 35.00
Artemis. Carmine-rose, white base, long stem.....	40.00
Sirene. Brilliant satin-rose; good forcer.....	35.00

*Miscellaneous Bulbs*

	Per 100	Per 1000
<b>Anemone:</b>		
Chrysanthaeflora—1 year No. 1.....	\$ 2.00	\$ 16.00
1 year No. 2.....	1.50	12.00
De Caen		
1 year No. 1.....	1.50	12.50
1 year No. 2.....	1.25	10.00
2 year No. 1.....	3.50	27.50
2 year No. 2.....	3.00	22.50
St. Brigid		
1 year No. 1.....	2.00	16.00
1 year No. 2.....	1.50	12.00
Hyacinthus Candicans (Galtonia).....	5.00	40.00
Leucojum Vernum (Snowflakes).....	4.00	35.00

*Miscellaneous Bulbs (continued)*

	<i>Per 100</i>	<i>Per 1000</i>
<b>Montbretia.</b> Crocusmaeflora.....	\$ 2.50	\$ 20.00
<b>Muscari.</b> Heavenly Blue—1st size.....	1.50	12.50
2nd size.....	1.25	10.00
<b>Ranunculus.</b> Giant French Mixed:		
1 year No. 1.....	2.00	12.00
1 year No. 2.....	1.50	10.00
2 year No. 1.....	3.00	25.00
2 year No. 2.....	2.50	17.50
<b>Scilla Campanulata:</b>		
Blue.....	2.00	15.00
Pink.....	3.00	20.00
White.....	3.00	20.00
<b>Snowdrop</b> (Galanthus):		
Elwesii Giant.....	4.00	30.00
Nivalis Single.....	3.50	28.00
Nivalis Double.....	5.00	40.00

*Lily Bulbs*

	<i>Per 100</i>	<i>Per 1000</i>
<b>Candidum:</b>		
7 to 8 inches circumference.....	12.00	100.00
8 to 9 inches circumference.....	15.00	125.00
9 to 10 inches circumference.....	20.00	150.00
10 to 11 inches circumference.....	25.00	200.00
11 to 12 inches circumference.....	30.00	250.00
<b>Regale:</b>		
2 to 3 inches circumference.....	3.00	20.00
3 to 4 inches circumference.....	4.25	30.00
4 to 5 inches circumference.....	5.00	45.00
5 to 6 inches circumference.....	7.50	65.00
6 to 7 inches circumference.....	15.00	120.00
7 to 8 inches circumference.....	20.00	150.00
8 to 9 inches circumference.....	25.00	200.00
9 to 10 inches circumference.....	40.00	350.00
10 inches and up.....	50.00	450.00
<b>Regale Lily Seed:</b> Per ounce.....	\$ .50	
Per pound.....	7.50	
<b>Tenuifolium:</b>		
1 year bulbs.....	9.00	80.00
2 year bulbs.....	12.00	100.00
3 year bulbs.....	15.00	125.00
<b>Tigrinum:</b>		
Single.....	10.00	90.00
Double.....	15.00	125.00
<b>Umbellatum:</b>		
First size.....	15.00	125.00
Second size.....	10.00	90.00

*Lily of the Valley*

Forcing pips for florists.....	5.00	30.00
Pips for outside planting.....	3.00	20.00

## Terms of Sale

All prices are quoted net, and subject to market fluctuations.

Twenty-five or more bulbs of one variety at the 100 rate and 250 or more of one variety at the 1000 rate.

All goods are sold f.o.b. Tacoma.

Crates additional at cost.

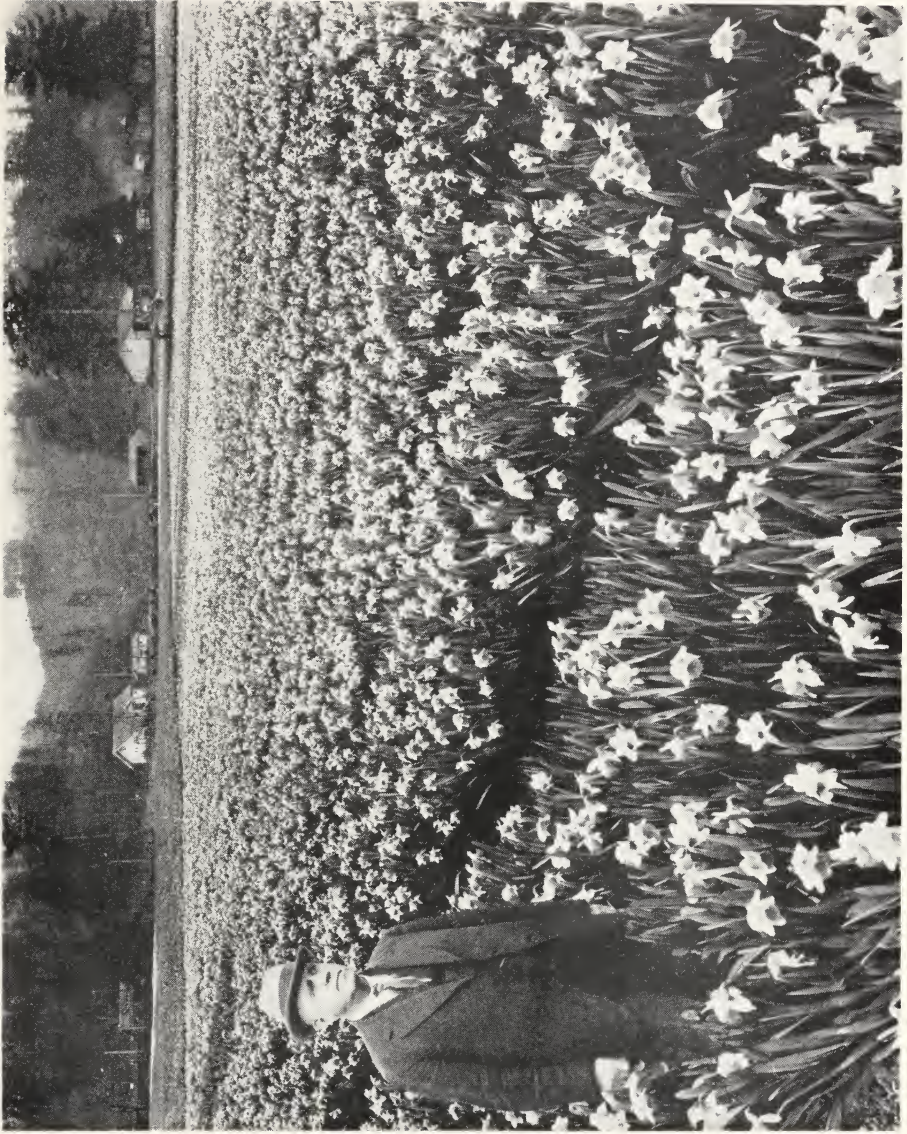
Unless otherwise ordered, shipments will be made by express at purchaser's expense.

No claims will be considered unless made within five days after receipt of goods. Our responsibility ceases upon your acceptance of the shipment.

Accounts are due 60 days after date of invoice, or 2% discount for payment within 10 days on approved credits; otherwise cash with the order.

We give no warranty, express or implied, as to purity, description, quality, productiveness, or any other matter of any trees, seeds, bulbs or plants we send out, and will not be in any way responsible for the crop. Purity and germination tests are information from official seed laboratories without guarantee. Deliveries on all contracts and orders not guaranteed against crop failure, fire, flood or other conditions beyond our control.

*Note the  
vigorous growth  
and large blooms  
from Lawler's  
bulbs which are  
among the finest  
to be had any-  
where.*



GEORGE LAWLER  
IN ONE OF HIS  
BULB FIELDS



KING ALFRED

GEORGE LAWLER, Wholesale Bulb Grower  
TACOMA, WASHINGTON