

# Product Catalog

**AGRICULTURE**



Our reason is water.™

## Why water management?

I recently stood on the back of a customer's pickup, looking at his corn—something I admittedly do a lot of in this business. He pointed to a small section of his field that he tilled the previous year; until now, he'd never been able to plant there. He smiled and said, **“Sure, planting a few more acres won't make or break my year, but planting more acres in this field for the rest of my life will impact my entire family.”** From that moment on, he's utilized water management systems across his operation on even his best-performing land.

That farmer's simple but powerful statement reaffirmed my staunch belief that water management is the greatest long-term investment farmers can make for their operations. Not only does drainage improve crop yields, but creating the ability to control and move water to the right place at the right time makes our soil systems better for generations to come. Proper drainage improves soil health by increasing ground temperatures, allowing microbes to flourish and earthworms to proliferate—enhancing the plant's root structure. New studies also demonstrate that drainage can reduce nutrient runoff and annual nitrogen loads each year.

As we introduce more automated water management systems, we are taking complete control of the water management process and giving farmers sustainable solutions that will benefit their families far into the future.

There is no better time to be in this business. On behalf of everyone at ADS, we are proud to do our part to keep families farming and your business flowing.



**Darla Bourgeois Huff**  
DIRECTOR OF AGRICULTURE

## Watch our brand video.

Nothing about this industry is sunshine and rainbows, but when the payoff benefits the lives of our customers, it's job satisfaction few will ever know. Watch our video featuring the trials and tribulations of agriculture, and why through every challenge, it's always worth the work.



SCAN HERE

# Table of Contents

**03** ADS Overview

**04** Safety

**05** Sustainability

**07** Benefits of Water Management



**09** Single Wall Pipe

**11** Pipe Information Tables

**13** National Specifications

**15** Single Wall Pipe

**17** Dual Wall Pipe

**19** N-12® Flex

**21** High Performance Polypropylene Pipe

**22** N-12 Flex® Dual Wall Stick Pipe

**23** Grain-Aire Pipe

**25** Fittings

**27** 4" Universal Tap Tee

**29** Inserta Tee®

**31** Single Wall Fittings

**33** Dual Wall Fittings

**35** Dual Wall Fabricated Fittings

**39** Dual Wall Fittings With Gaskets

**40** Soil-Tight Fittings Without Gaskets/Cleated

**41** Ancillary Products

**43** Ancillary Products

**44** Flared, Metal, Foundation

**45** Water Control Structure

**47** Surface Inlets

**49** Surface Inlets

**51** HP Agricultural Lift Station

**53** Geotextiles

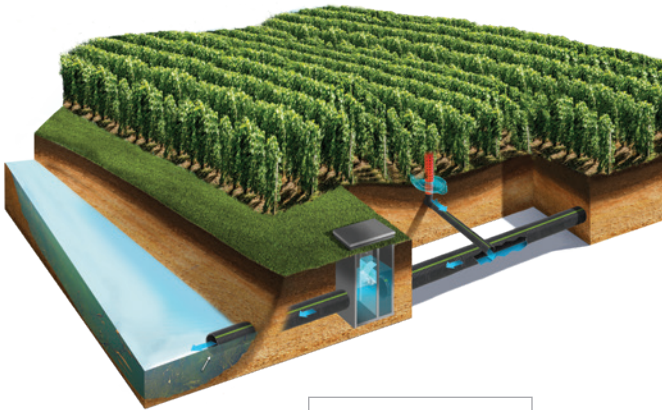
**55** Geotextiles

**57** Our Team

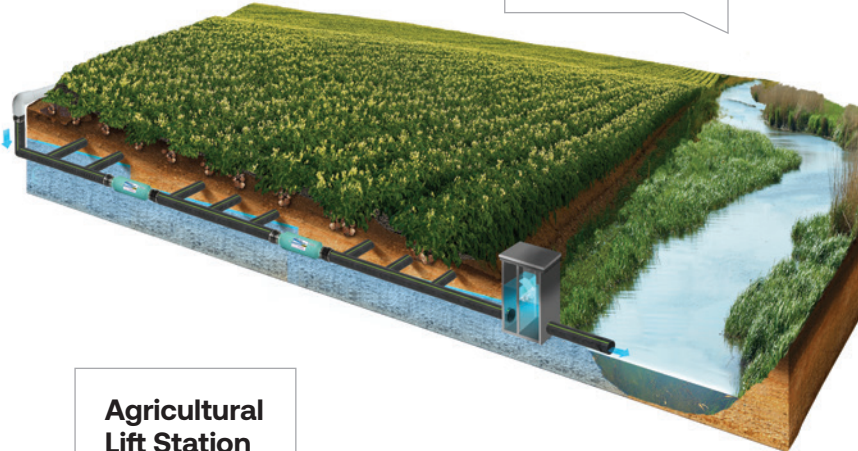
# The leader in water management solutions, sustainability and safety.

We keep businesses flowing, families farming and job sites safe. ADS Agriculture offers total water management solutions to fit any drainage need in any region of the country. From tile and fittings to lift stations and water control structures, we have the solutions farmers need to improve yields, increase farmable acres and invest in the future of their operations.

Water Control Structure



Subsurface Irrigation



Agricultural Lift Station



# Safety starts here.

Safety isn't a perk. It's mandatory. In our quest to create safer job sites, we designed the revolutionary new ADS automated trailer. With zero-touch technology, drivers no longer need to interact manually with the product, resulting in fewer injuries and less product damage.



# Leading the way in plastic recycling.

Here at ADS, we're committed to maximizing the use of recycled plastics in many of our agriculture products. Our company strives to help farmers with their bottom line by creating sustainable solutions that exceed multiple pipe performance standards. As a leader in recycling, we will continue to push the limits of what's possible, converting single-use plastics into durable goods that last in your fields for generations to come.



**Sustainability  
in Action**



**770 MILLION  
POUNDS**  
of GHG emissions avoided



GHG emissions avoided  
amounts to taking  
**74,000 CARS  
OFF THE ROAD**

# All ADS pipe is created equal. Let's dig into the data.

The truth is ADS recycled plastic performs the same as virgin plastic while benefitting the environment. It's a win-win for everyone. Invest in the future of water management, reach for higher yields and lower your environmental impact.

## STILL DOUBTING THE STRENGTH OF RECYCLED PLASTIC?

See how ADS recycled pipe is built to stand the test of time.



SCAN for the full Fiscal Year Sustainability Report.

### FLEXURAL MODULUS (PSI)

**+261%**  
More than minimum requirement

ADS Recycled Actual

> 40,000

### TENSILE STRENGTH (PSI)

**+32%**  
More than minimum requirement

ADS Recycled Actual

> 3,000

### PIPE STIFFNESS (PSI)

**+39%**  
More than minimum requirement

ADS Recycled Actual

≥ 30 PII

5% STIFFNESS



It takes **59% LESS** water to produce recycled pipe than virgin



Recycled resin uses **88% LESS** total energy than virgin



**CONSUMED 28%** of the recycled HDPE bottle in the US in 2021

Source: <https://plasticsrecycling.org/images/apr/2018-APR-Recycled-Resin-Report.pdf>

# Need a reason to believe in the benefits of water management?

## How about 10?

Every dollar invested in drainage improvement creates a bigger payback for you. Lower your water table below the root zone of your crop to avoid saturated soils and increase your yield year over year.





# Let's talk numbers.

---

1

## **HIGHER YIELDS**

Proper subsurface field drainage improves crop yields by 30% on average.

2

## **LOWER BREAK-EVEN PRICE**

Tiled land yields more bushels per acre and lowers the break-even price.

3

## **HIGH RETURN ON INVESTMENT**

Tiling has one of the highest returns on your investment—more than large items like equipment and building improvements.

4

## **HIGHER LAND VALUE**

Tiling adds value to the land, making subsurface drainage an excellent investment.

5

## **LONGER GROWING SEASONS**

Accelerated drying allows for earlier planting in an environment where plants can thrive.

6

## **HEALTHIER ROOTS**

Tiling lowers the water table, so root systems seek deeper moisture and grow better, even in drought years.

7

## **REDUCES EROSION**

Subsurface drainage enables the soil to hold more moisture, reducing runoff and soil erosion.

8

## **REDUCES SOIL COMPACTION**

Tiling reduces standing water and the compaction it causes, so roots can easily penetrate the soil for better overall plant health.

9

## **SUPERIOR SOIL STRUCTURE**

Tiled land creates porous soil with more air and water reaching plants' roots, crucial for healthy growth.

10

## **IMPROVED WEED CONTROL**

Subsurface drainage creates healthier plants that can better resist weeds and diseases.

# Single Wall Pipe

More goes into planning a drainage project than just calculating the slope and square footage. Each region has different weather patterns and soil types. ADS experts ensure each customer gets the best-performing pipe for his or her specific needs. With multiple variations of our single wall pipe, we have what you need for any soil type.

Reduce soil infiltration and create a water management system tailored to you with our single wall pipe.

SCAN for the digital  
product catalog.





**3" - 12" PRODUCT COIL FOOTAGE PER WRAP SINGLE WALL PIPE\***

PIPE DIAMETER - ROLL FOOTAGE	1ST WRAP	2ND WRAP	3RD WRAP	4TH WRAP	5TH WRAP	6TH WRAP
3" - 5,500'	169	210	250	300	340	385
Total footage		379	629	929	1,269	1,654
4" - 3,200'	131	147	222	236	297	334
Total footage		278	500	736	1,033	1,267
5" - 2,000'	125	155	200	228	274	304
Total footage		280	480	708	982	1,286
6" - 1,500'	88	121	183	218	245	285
Total footage		209	392	610	855	1,140
8" - 720'	72	110	148	175	215	
Total footage		182	330	505	720	
10" - 520'	77	101	144	198		
Total footage		178	322	520		
12" - 330'	60	115	155			
Total footage		175	330			

**20' - 300' DRAINAGE PIPE REQUIREMENTS PER ACRE (LATERALS)\*\***

SPACING (BETWEEN PIPE)	PIPE PER ACRE (ESTIMATED)
20' (6.1 m)	2,200' (671 m)
30' (9.1 m)	1,450' (442 m)
40' (12.2 m)	1,100' (335 m)
50' (15.2 m)	900' (274 m)
60' (18.3 m)	725' (221 m)
70' (21.3 m)	638' (194 m)
80' (24.4 m)	550' (168 m)
90' (27.4 m)	500' (152 m)
100' (30.5 m)	450' (137 m)
150' (45.7 m)	338' (103 m)
200' (61 m)	225' (69 m)
250' (76.2 m)	188' (57 m)
300' (91.4 m)	150' (46 m)

**8" - 15" DUAL WALL FLEX PIPE\*\*\***

DIAMETER	STANDARD LENGTHS
8" (200 mm)	920' (280.4 m) Solid
	920' (280.4 m) Perf
	920' (280.4 m) Fine Slot
10" (250 mm)	550' (167.6 m) Solid
	550' (167.6 m) Fine Slot
12" (300 mm)	360' (109.7 m) Solid
	360' (109.7 m) Perf
	360' (109.7 m) Fine Slot
15" (375 mm)	165' (50.3 m) Solid
	165' (50.3 m) Perf
	165' (50.3 m) Fine Slot

\*These numbers are estimates.

7TH WRAP	8TH WRAP	9TH WRAP	10TH WRAP	11TH WRAP	12TH WRAP	13TH WRAP	TOTAL FOOTAGE
425	470	511	550	590	630	670	5,500'
2,079	2,549	3,060	3,610	4,200	4,830	5,500	
393	434	473	533				3,200'
1,760	2,194	2,667	3,200				
342	372						2,000'
1,628	2,000						
360							1,500'
1,500							
							720'
							520'
							330'

**8" - 15" COIL FOOTAGE PER WRAP FLEXIBLE DUAL WALL PIPE\*\*\***

PIPE DIAMETER - ROLL FOOTAGE	1ST WRAP	2ND WRAP	3RD WRAP	4TH WRAP	5TH WRAP	6TH WRAP	TOTAL FOOTAGE
8" - 920'	78	112	147	181	215	187	920'
Total footage		190	337	518	733	920	
10" - 550'	73	110	148	186	33		550'
Total footage		183	331	517	550		
12" - 360'	64	97	130	69			360'
Total footage		161	291	360			
15" - 165'	55	87	23				165'
Total footage		142	165				

**12" - 60" DUAL WALL PIPE TRUCK LOAD CHART\*\*\*\* MAXIMUM LINEAR FOOT PER LOAD**

PIPE DIAMETER	10' (3.0 M) PIPE LENGTH	20' (6.1 M) PIPE LENGTH	PIPE DIAMETER	10' (3.0 M) PIPE LENGTH	20' (6.1 M) PIPE LENGTH
12" (300 mm)	2,580' (786 m)	2,400' (731 m)	36" (900 mm)	240' (73 m)	240' (73 m)
15" (375 mm)	1,700' (518 m)	1,600' (487 m)	42" (1050 mm)	200' (61 m)	200' (61 m)
18" (450 mm)	1,200' (366 m)	1,120' (341 m)	48" (1200 mm)	120' (36 m)	120' (36 m)
24" (600 mm)	630' (192 m)	600' (182 m)	60" (1500 mm)	80' (24 m)	80' (24 m)
30" (750 mm)	360' (110 m)	360' (110 m)			

\*\* Single wall pipe, additional detail on page 15. \*\*\*N-12 FLEX pipe, additional detail on page 19. \*\*\*\*N-12 Dual Wall stick pipe, additional detail on page 22.

## COMMON ASTM STANDARDS

PIPE PRODUCT	SPECIFICATIONS
Single Wall Pipe Standards	ASTM F667
	ASTM F477
	ASTM D2321
Dual Wall Pipe Standards	ASTM F2306
	ASTM D2321
	ASTM F477
	ASTM D3212
	ASTM F2648
Fittings Standards	ASTM F2306
	ASTM D2321
	ASTM F477
Polypropylene (PP) Pipe Standards	ASTM F2881
	ASTM F2764*
	ASTM D3212
Geotextiles	ASTM D1117
	ASTM D4355
	ASTM D4491
	ASTM D4533
	ASTM D4595
	ASTM D4632
	ASTM D4751
	ASTM D4833
	ASTM D5199
	ASTM D5261
	ASTM D6241
	ASTM D6475
	ASTM D6525
	ASTM D6567
	ASTM D6637
ASTM D6818	

DESCRIPTIONS
Standard Specifications for 3" to 24" (75 to 600 mm) Corrugated Polyethylene Pipe (PE) and Fittings for Non-Pressure Conveyance of Drainage Water
Elastomeric Seals (Gaskets) for Joining Plastic Pipe Standard Specification
Thermoplastic Pipe Underground Installation for Gravity-Flow Applications
12" to 60" (300 to 1500 mm) Annular Corrugated Profile-Wall Polyethylene Pipe and Fittings for Gravity-Flow Storm Sewer and Subsurface Drainage Applications
Thermoplastic Pipe Underground Installation for Gravity-Flow Applications
Elastomeric Seals (Gaskets) for Joining Plastic Pipe Standard Specification
Joints for Drain and Sewer Plastic Pipes Using Flexible Elastomeric Seals (lab test)
Standard Specification for 2" to 60" (50 to 1500 mm) Annular Corrugated Profile Wall Polyethylene (PE) Pipe and Fittings for Land Drainage Applications
12" to 60" (300 to 1500 mm) Annular Corrugated Profile-Wall Polyethylene Pipe and Fittings for Gravity-Flow Storm Sewer and Subsurface Drainage Applications
Thermoplastic Pipe Underground Installation for Gravity-Flow Applications
Elastomeric Seals (Gaskets) for Joining Plastic Pipe Standard Specification
Material Spec for 12" to 60" (300 to 1500 mm) Dual Wall Polypropylene (PP) Pipe with Variable Pipe Stiffness for Non-Pressure Storm Sewer System Applications
6" to 60" (750 to 1500 mm) Polypropylene (PP) Dual Wall and Triple Wall Pipe and Fittings for Non-Pressure Sanitary Sewer Applications*
Joints for Drain and Sewer Plastic Pipes Using Flexible Elastomeric Seals (lab test)
Standard Guide for Evaluating Nonwoven Fabrics
Standard Test Method for Deterioration of Geotextiles by Exposure to Light, Moisture and Heat
Standard Test Method for Water Permeability of Geotextiles
Standard Test Method for Trapezoid Tearing Strength of Geotextiles
Standard Test Method for Tensile Properties of Geotextiles by the Wide-Width Strip Method
Standard Test Method for Grab Breaking Load and Elongation of Geotextiles
Standard Test Method for Determining Apparent Opening Size of a Geotextile
Standard Test Method for Index Puncture Resistance of Geomembranes
Standard Test Method for Measuring the Nominal Thickness of Geosynthetics
Standard Test Method for Measuring Mass per Unit Area of Geotextiles
Standard Test Method for Static Puncture Strength of Geotextiles
Standard Test Method for Measuring Mass per Unit Area of Erosion Control Blankets
Standard Test Method for Measuring Nominal Thickness of Rolled Erosion Control Products
Standard Test Method for Measuring the Light Penetration of a Turf Reinforcement Mat
Standard Test Method for Determining Tensile Properties of Geogrids
Standard Test Method for Ultimate Tensile Properties of Rolled Erosion Control Products

## 3" - 15" SINGLE WALL · SOLID

INSIDE DIAMETER	STANDARD LENGTHS	PRODUCT CODE
3" (75 mm)	100' (30.5 m) Solid	03800100HH
	250' (76.2 m) Solid	03800250HH
4" (100 mm)	100' (30.5 m) Solid	04800100
	250' (76.2 m) Solid	04800250
	3,200' (975.4 m) Solid	04803200
5" (125 mm)	165' (50.3 m) Solid	05800165
6" (150 mm)	20' (6.1 m) Solid	06800020
	100' (30.5 m) Solid	06800100
	825' (251.5 m) Solid	06800825
	1,500' (457.2 m) Solid	06801500
	1,500' (457.2 m) Co-Ex Solid	06071500
8" (200 mm)	20' (6.1 m) Solid	08800020AP
	325' (99.1 m) Solid	0880325AP
	720' (249.9 m) Solid	08800720AP
	720' (249.9 m) Co-Ex Solid	08070720AP
	20' (6.1 m) Solid	08810020AP
10" (250 mm)	20' (6.1 m) Solid	10800020AP
	520' (158.5 m) Solid	10800520AP
12" (300 mm)	20' (6.1 m) Solid	12510020
	330' (100.5 m) Solid	12510330
15" (375 mm)	20' (6.1 m) Solid	15510020
	165' (50.3 m) Solid	15510165

## 3" - 15" SINGLE WALL · PERFORATED

INSIDE DIAMETER	STANDARD LENGTHS	PRODUCT CODE
3" (75 mm)	100' (30.5 m) Perf	03810100HH
	250' (76.2 m) Perf	03810250HH
	5,500' (1676.4 m) Perf	03815500HH
	100' (30.5 m) Perf/Sock	03830100BS
	250' (76.2 m) Perf/Sock	03830250BS
4" (100 mm)	100' (30.5 m) Perf	04810100
	250' (76.2 m) Perf	04810250
	3,200' (975.4 m) Perf	04813200
	3,200' (975.4 m) Co-Ex Perf	04083200
	100' (30.5 m) Perf/Sock	04830100BS
	250' (76.2 m) Perf/Sock	04830250BS
	3,200' (975.4 m) Perf/Sock	048303200BS
5" (125 mm)	165' (50.3 m) Perf	05810165
	165' (50.3 m) Perf/Sock	05830165BS
	2,000' (609.6 m) Perf	05812000
	2,000' (609.6 m) Perf/Sock	05832000BS
6" (150 mm)	20' (6.1 m) Perf	06810020
	100' (30.5 m) Perf	06810100
	825' (251.5 m) Perf	068100825
	1,500' (457.2 m) Perf	06811500
	1,500' (457.2 m) Co-Ex Perf	06081500
	100' (30.5 m) Perf/Sock	06830100BS
	1,500' (457.2 m) Perf/Sock	06831500BS
8" (200 mm)	325' (99.1 m) Perf	08810325AP
	720' (249.9 m) Perf	08810720AP
	720' (249.9 m) Co-Ex Perf	08080720AP
	20' (6.1 m) Perf/Sock	08830020BSAP
	720' (249.9 m) Perf/Sock	08830720BSAP
	20' (6.1 m) Perf	10810020AP
10" (250 mm)	520' (158.5 m) Perf	10810520AP
	20' (6.1 m) Perf/Sock	10830020AP
	520' (158.5 m) Perf/Sock	10830520AP
	20' (6.1 m) Perf	12010020
12" (300 mm)	330' (100.5 m) Perf	12010330
	330' (100.5 m) Perf/Sock	12730330
	20' (6.1 m) Perf	15010020
15" (375 mm)	165' (50.3 m) Perf	15010165



### 3" - 15" SINGLE WALL · FINE SLOT

INSIDE DIAMETER	STANDARD LENGTHS	PRODUCT CODE
3" (75 mm)	100' (30.5 m) Fine Slot	03090100HH
	300' (91.4 m) Fine Slot	03090300HH
	5,500' (1676 m) Fine Slot	03095500HH
4" (100 mm)	100' (30.5 m) Fine Slot	04090100
	3,200' (975.4 m) Fine Slot	04093200
	3,200' (975.4 m) Co-Ex Fine Slot	04083200FS
5" (125 mm)	165' (50.2 m) Fine Slot	05090165
	2,000' (609.6 m) Fine Slot	05092000
6" (150 mm)	100' (30.5 m) Fine Slot	06090100
	825' (251.5 m) Fine Slot	06090825
	1,500' (457.2 m) Co-Ex Fine Slot	06081500FS
	1,500' (457.2 m) Fine Slot	06091500
8" (200 mm)	325' (121.9 m) Fine Slot	08090325AP
	720' (250 m) Fine Slot	08090720AP
	720' (250 m) Co-Ex Fine Slot	08080720FSAP
10" (250 mm)	520' (158.5 m) Fine Slot	10090520
12" (300 mm)	330' (100.6 m) Fine Slot	12090330

### 4" - 12" SINGLE WALL · AASHTO HIGHWAY

INSIDE DIAMETER	STANDARD LENGTHS	PRODUCT CODE
4" (100 mm)	250' (76.2 m) Solid	04400250
	250' (76.2 m) Perf	04410250
	250' (76.2 m) Perf/Sock	04430250
	3,200' (975.4 m) Perf/Sock	04433200
6" (150 mm)	100' (30.5 m) Solid	06400100
	1,500' (457.2 m) Solid	06401500
	100' (30.5 m) Perf	06410100
	1,500' (457.2 m) Perf	06411500
	100' (30.5 m) Perf/Sock	06430100
8" (200 mm)	1,500' (457.2 m) Perf/Sock	06431500
	20' (6.1 m) Solid	08400020AP
10" (250 mm)	20' (6.1 m) Perf	08410020AP
	20' (6.1 m) Perf/Sock	08430020AP
	20' (6.1 m) Solid	10400020
12" (300 mm)	20' (6.1 m) Perf	10410020
	20' (6.1 m) Perf/Sock	10430020
	20' (6.1 m) Solid	12400020
12" (300 mm)	20' (6.1 m) Perf	12410020
	20' (6.1 m) Perf/Sock	12430020

### 4" - 8" SINGLE WALL · CHANNEL MUCK

INSIDE DIAMETER	STANDARD LENGTHS	PRODUCT CODE
4" (100 mm)	100' (30.5 m) 3-hole Perf	04060100
	250' (76.2 m) 3-hole Perf	04060250
	3,200' (975 m) 3-hole Perf	04063200
	3,200' (975 m) 3-hole Perf/Sock	04773200OS
6" (150 mm)	100' (30.5 m) 3-hole Perf	6060100
	1,500' (457 m) 3-hole Perf	6061500
8" (200 mm)	720' (250 m) 3-hole Perf/Sock	08770720OS

# Dual Wall Pipe

Dual wall pipe is our most durable agriculture solution. As the inventor of dual wall technology, we carry a long legacy of quality dual wall construction. We have the tools you need to keep business flowing with fewer joints, faster flow rates and increased durability.

SCAN for the digital  
product catalog.





## Dual Wall Pipe

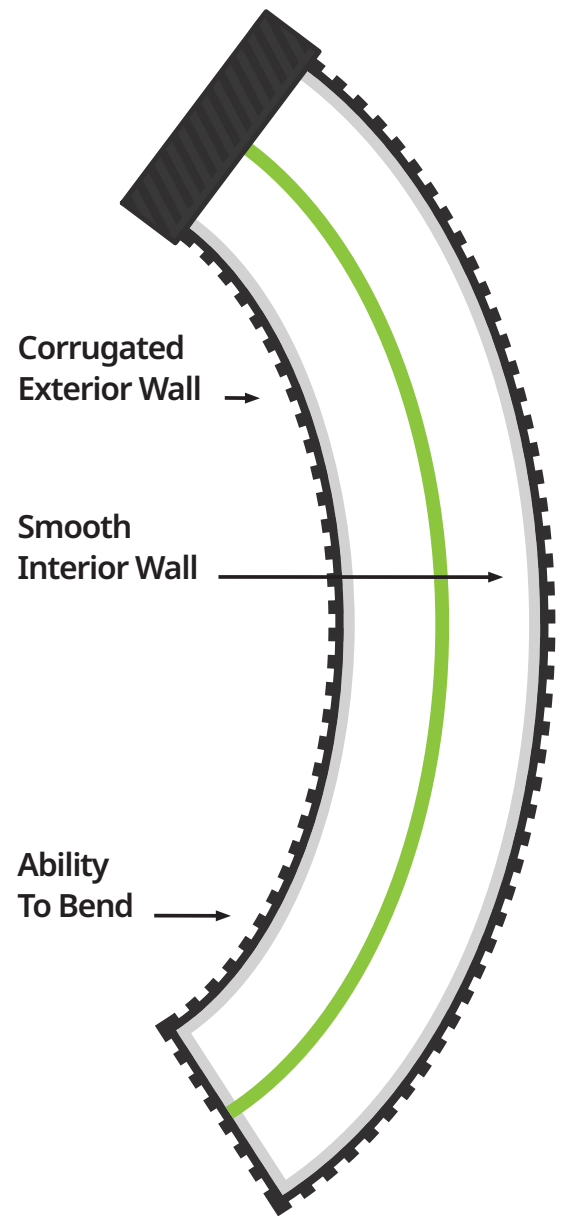
# N-12<sup>®</sup> Flex

The N-12 Flex goes beyond its industry-leading flow rates. It eliminates the need for open trenching, which vastly increases safety and installation speed. Boost your business' bottom line with our most versatile, go-to dual wall pipe and reduce overhead and operation costs while you're at it. The N-12 Flex has the flexibility contractors want and the flow rates that farmers need.

- The industry's best flow rates at 12% faster\* than the flexible dual wall pipe industry average
- Increases flow capacity, enabling more flow from a smaller diameter pipe
- Eliminates the need for open trenching, improving installation, safety and speed
- Reduces the amount of material, labor and equipment needed



**SCAN** the code for more information.



## 8" - 15" DUAL WALL FLEX PIPE

DIAMETER	STANDARD LENGTHS	PRODUCT CODE
8" (200 mm)	920' (280.4 m) Solid	08950920
	920' (280.4 m) Perf	08910920
	920' (280.4 m) Fine Slot	08890920
10" (250 mm)	550' (167.6 m) Solid	10950550
	550' (167.6 m) Fine Slot	10890550
12" (300 mm)	360' (109.7 m) Solid	12950360
	360' (109.7 m) Perf	12910360
	360' (109.7 m) Fine Slot	12890360
15" (375 mm)	165' (50.3 m) Solid	15950165
	165' (50.3 m) Perf	15910165
	165' (50.3 m) Fine Slot	15890165



\*Based on internal testing of six known suppliers of flexible dual wall pipe.

**HP STORM***HP Storm Fittings are also available. Contact a sales rep for more information.*

DIAMETER	LENGTH	PRODUCT CODE
12" (300 mm)	20' (6.1 m)	12650020IBPL1
15" (375 mm)	20' (6.1 m)	15650020IBPL1
18" (450 mm)	20' (6.1 m)	18650020IBPL1
24" (600 mm)	20' (6.1 m)	24650020IBPL1
30" (750 mm)	20' (6.1 m)	30650020IBPL1
36" (900 mm)	20' (6.1 m)	36650020IBPL1
42" (1050 mm)	20' (6.1 m)	42650020IBPL1
48" (1200 mm)	20' (6.1 m)	48650020IBPL1
60" (1500 mm)	20' (6.1 m)	60650020IBPL1

**POTATO AERATION PIPE**

DIAMETER	LENGTH	PRODUCT CODE
15" (375 mm) HP	20' (6.1 m)	15870020PLSP
18" (450 mm) HP	20' (6.1 m)	18870010PLSP1
18" (450 mm) HP	20' (6.1 m)	18970020PLSP
18" (450 mm) HDPE	20' (6.1 m)	18970020SP
24" (600 mm) HP	20' (6.1 m)	24870020PLSP
30" (750 mm) HP	20' (6.1 m)	30970020PLSP

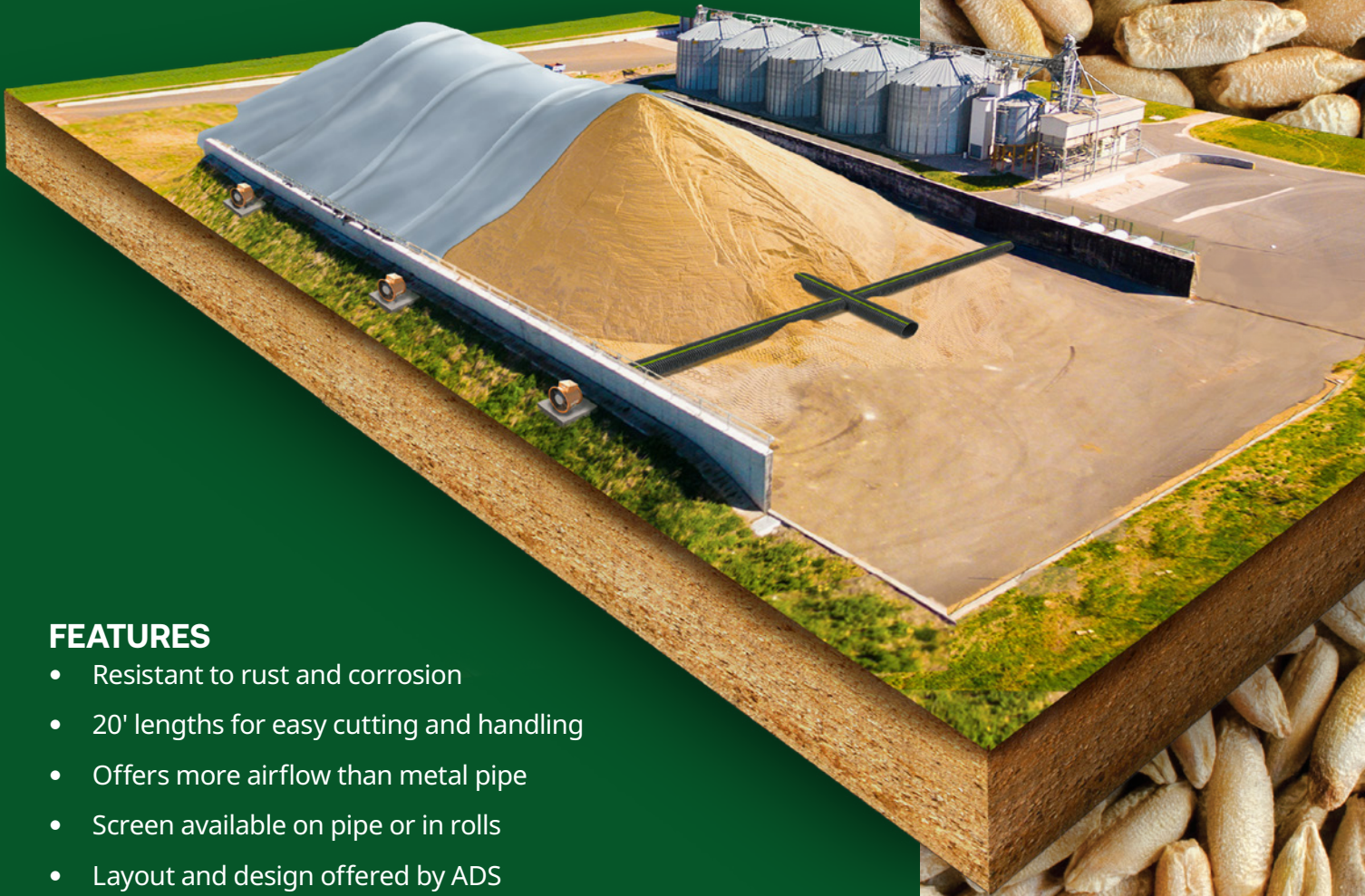
## 4" - 60" DUAL WALL

DIAMETER	LENGTHS	STYLE	N-12® PLAIN END	N-12® ST**	N-12® WT*
4" (100 mm)	20' (6.1 m)	solid	04150020DW	04150020IBDW	04650020IBDW
		perf	04110020DW	04110020IBDW	
		sock	04230020DW	04230020IBDW	
6" (150 mm)	20' (6.1 m)	solid	06150020DW	06150020IBDW	06650010IBDW
		perf	06110020DW	06110020IBDW	
		sock	06230020DW	06230020IBDW	
8" (200 mm)	20' (6.1 m)	solid	08150020DW	08150020IBDW	08650020IBDW
		perf	08110020DW	08110020IBDW	
		sock	08230020DW	08230020IBDW	
10" (250 mm)	20' (6.1 m)	solid	10150020DW	10150020IBDW	10650020IBDW
		perf	10110020DW	10110020IBDW	
		sock	10230020DW	10230020IBDW	
12" (300 mm)	10' (3 m)	solid		12850010DW	
	20' (6.1 m)	solid	12950020DW	12850020DW	12650020DW
		perf	12910020DW	12810020DW	
		sock	12930020DW	12830020DW	
15" (375 mm)	10' (3 m)	solid		15850010DW	
	20' (6.1 m)	solid	15950020DW	15850020DW	15650020DW
		perf	15910020DW	15810020DW	
		sock	15930020DW	15830020DW	
18" (450 mm)	10' (3 m)	solid		18850010DW	
	20' (6.1 m)	solid	18950020DW	18850020DW	18650020DW
		perf	18910020DW	18810020DW	
		sock	18930020DW	18830020DW	
24" (600 mm)	10' (3 m)	solid		24850010DW	
	20' (6.1 m)	solid	24950020DW	24850020DW	24650020DW
		perf	24910020DW	24810020DW	
		sock	24930020DW	24830020DW	
30" (750 mm)	20' (6.1 m)	solid	30950020DW	30850020DW	30650020DW
		perf	30910020DW	30810020DW	
		sock	30930020DW	30830020DW	
30" (750 mm)	20' (6.1 m)	solid	36950020DW	36850020DW	36650020DW
		perf	36910020DW	36810020DW	
		sock		36830020DW	
42" (1,050 mm)	20' (6.1 m)	solid	42950020DW	42850020DW	42650020DW
		perf	42910020DW	42810020DW	
		sock		42830020DW	
48" (1,200 mm)	20' (6.1 m)	solid	48950020DW	48850020DW	48650020DW
		perf	48910020DW	48810020DW	
		sock		48830020DW	
60" (1,500 mm)	20' (6.1 m)	solid	60950020DW	60850020DW	60650020DW
		perf	60910020DW	60810020DW	
		sock		60830020DW	

\*N-12® pipe is also available in fine slot. Lead time is required for fine slot orders. \*\*Limited geographic availability

# Grain-Aire Pipe

It's crucial for businesses to keep their grain drier for longer. With a 360° airflow, Grain-Aire Pipe Screen is our most cost-effective grain aeration system. The durable screen features a 30% open area to allow unrestricted airflow, and our unique design creates optimal durability. This product allows maximum airflow by preventing grain from entering the pipe and restricting perforations.



## FEATURES

- Resistant to rust and corrosion
- 20' lengths for easy cutting and handling
- Offers more airflow than metal pipe
- Screen available on pipe or in rolls
- Layout and design offered by ADS

## BENEFITS

- Keeps grain drier, longer
- Allows unrestricted airflow
- Prevents grain from entering pipe
- Our most cost-effective grain aeration system

SCAN the code for more information.

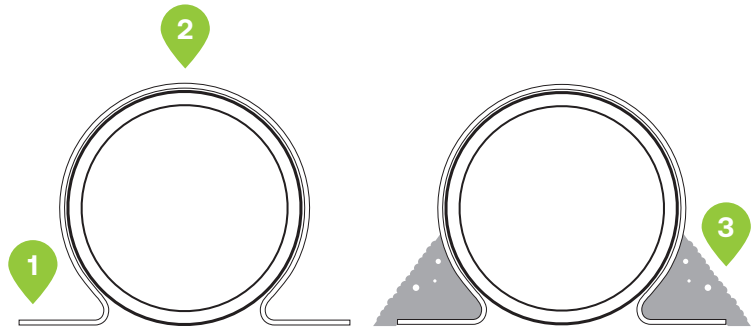




**Step 1** | Allow excess of filter fabric to lie flat on ground.

**Step 2** | Center filter fabric over crown of pipe.

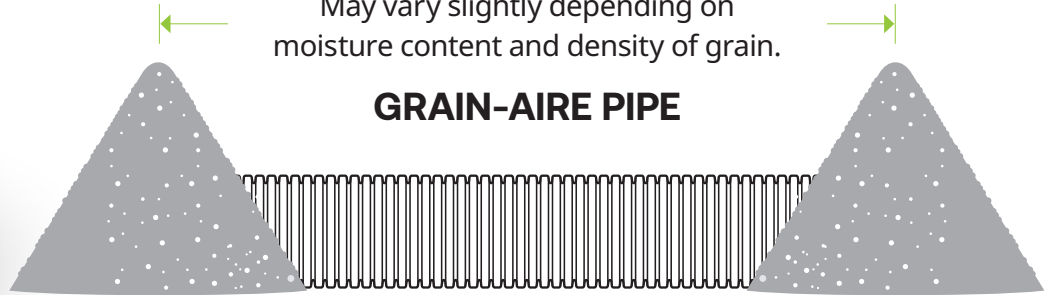
**Step 3** | Shovel grain onto the excess filter fabric to ensure the fabric does not shift.



APPROXIMATELY EVERY 10'

May vary slightly depending on moisture content and density of grain.

### GRAIN-AIRE PIPE



### GRAIN-AIRE PIPE WITH SCREEN SLEEVE

	DESCRIPTION	PRODUCT CODE
Single Wall Pipe	15" (375 mm) Grain-Aire Pipe 20' (6.1 m) L	15840020SW
Dual Wall Pipe	12" (300 mm) Grain-Aire Pipe 20' (6.1 m) L	12840020
	15" (375 mm) Grain-Aire Pipe 20' (6.1 m) L	15840020
	18" (450 mm) Grain-Aire Pipe 20' (6.1 m) L	18840020
	24" (600 mm) Grain-Aire Pipe 20' (6.1 m) L	24840020
	30" (750 mm) Grain-Aire Pipe 20' (6.1 m) L	30840020
	36" (900 mm) Grain-Aire Pipe 20' (6.1 m) L	36840020
Screen Fabric	18" (450 mm) Grain-Aire Screen Fabric, 300' (91.4 m) RL	1884HARL
	24" (600 mm) Grain-Aire Screen Fabric, 300' (91.4 m) RL	2484HARL
Screen Fabric Sleeve	12" (300 mm) Grain-Aire Screen Fabric Sleeve, 21' (6.4 m) L	1284HA
	15" (375 mm) Grain-Aire Screen Fabric Sleeve, 21' (6.4 m) L	1584HA
	18" (450 mm) Grain-Aire Screen Fabric Sleeve, 21' (6.4 m) L	1884HA
	24" (600 mm) Grain-Aire Screen Fabric Sleeve, 21' (6.4 m) L	2484HA
	30" (750 mm) Grain-Aire Screen Fabric Sleeve, 21' (6.4 m) L	3084HA
	36" (900 mm) Grain-Aire Screen Fabric Sleeve, 21' (6.4 m) L	3684HA

# Fittings

We're proud to offer the right fit for any job, no matter the size. Our fittings are built through molded construction and carefully designed to protect against leaks at the joint. And unlike many competitors, we offer fully customizable fabricated fittings. Send a sample to your sales rep, and we'll design it according to your needed specs.

SCAN for the digital product catalog.





## Fittings

# 4" Universal Tap Tee<sup>®</sup>

Our Universal Tap Tee connects 4-inch single wall pipe to 6-, 8-, 10- and 12-inch single and dual wall pipe. That's eight possible connections with just one product. You can install the Universal Tap Tee in seconds, creating a soil-tight connection to your main lines.

### FEATURES

- 3-15/16" hole saw used on all diameters
- Protrusion matches the marketplace and our current product offering
- Advanced rib design prevents the product from rotating
- Stop ring ensures product is not pushed too far into the mainline on 6" and 8" product

### BENEFITS

- Utilizes one fitting for all 6" through 12" single and dual wall products
- Installs in seconds, creating an easy soil-tight connection to main lines
- Reduces SKUs (from 6 to 1) to create efficiency
- Allows easier ordering and inventory process
- Endures wear and tear during pipe installation for rough handling conditions

SIZE	PRODUCT CODE
4" x 6"/8"/10"/12"	0480AA

SCAN the code for more information.



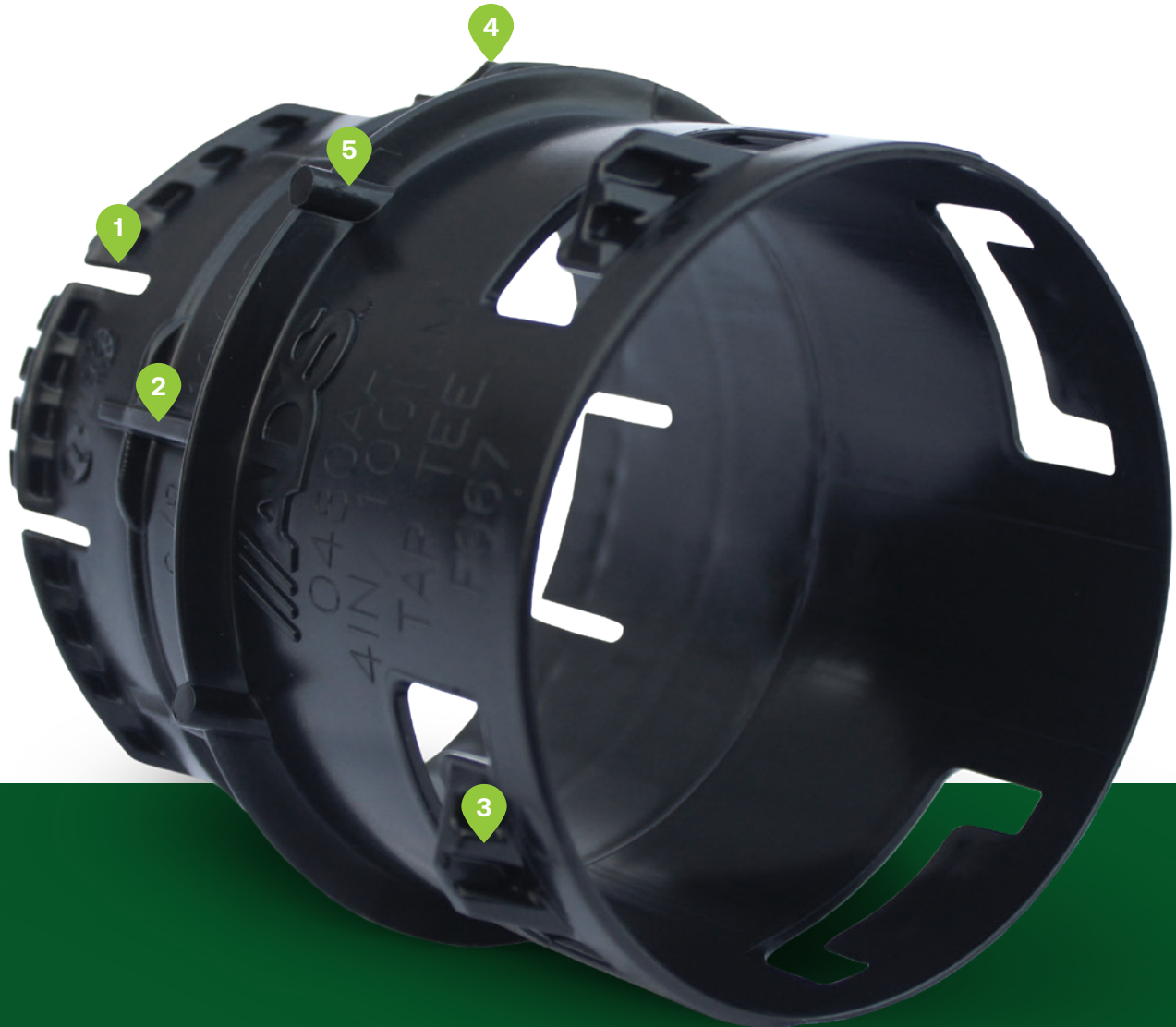
**1** Connection design allows for universal fit of multiple pipe types and wider range of diameters.

**2** Anti-rotation rib prevents over-insertion and maintains proper alignment for a secure fit.

**3** Building on 30 years of ADS cleat innovation, our unique design allows for easy insertion with robust pull-out resistance.

**4** Side wings with pull-out resistant lugs limits rocking and provides stable connection.

**5** Multi-purpose stop rib allows for limited insertion depth on all eight potential connections with one product.



## Fittings

# Inserta Tee<sup>®</sup>

Save time and money with the Inserta Tee, one lateral solution that fits any type of pipe, with the same great performance you trust from ADS products. This easy-to-install connection consists of a PVC hub, rubber sleeve and stainless steel band.

### KEY BENEFITS OF INSERTA TEE

- 5-10x faster installation than traditional fabricated fittings
- Watertight and sturdy, allowing no soil infiltration; requires 100 lbs of pressure to get the fitting out once installed
- Versatile enough to be installed on all products (concrete, clay, plastic, etc.) and sizes; available in 4-30" diameters
- Takes up less space than fabricated fittings and comes in multi-fit options so you can eliminate SKUs



SCAN the code for more information.

## N-12® INTO N-12®/HP

DIAMETER	PRODUCT CODE
4" into 8"	4N128N12
4" into 10"	4N1210-12FIT
4" into 12"	4N1210-12FIT
4" into 15" - 24"	4N1215+FIT
4" Red saw (4 1/2")	R412SAW
6" into 10" - 12"	6N1210-12FIT
6" into 15" - 24"	6N1215+FIT
6" into 30"	6N1215+FIT
6" Red saw (6 1/2")	R612SAW
8" into 12" - 15"	8N1212-15FIT
8" into 18" - 48"	8N1218+FIT
8" Red saw (8 3/4")	R834SAW
10" into 18"	10N1218N12
10" into 24"	10N1224N12
10" into 30"	10N1230N12
10" Blue saw (10 7/8")	BL1078SAW
12" into 24"	12N1224N12
12" into 30"	12N1230N12
12" into 36"	12N1236N12
12" into 42"	12N1242N12
12" Blue saw (12 7/8")	BL1278SAW
15" into 30"	15N1230N12
15" into 30" HP	15N1230HP
15" Blue saw (15 13/16")	BL151316SAW
18" into 36"	18N1236N12
18" into 48"	18N1248N12
18" Blue saw (19 3/16")	BL191316SAW
24" into 36"	24N1236N12
24" into 48"	24N1248N12
24" Blue saw (25 5/16")	BL25516SAW

**INTERNAL COUPLERS**

DIAMETER	PRODUCT CODE
3" (75 mm)	0315AA
4" (100 mm)	0417AA
5" (125 mm)	0517AA
6" (150 mm)	0615AA
8" (200 mm)	0815AA
10" (250 mm)	1015AA

**EXTERNAL SNAP COUPLERS**

DIAMETER	PRODUCT CODE
3" (75 mm)	0312AA
4" (100 mm)	0412AA
5" (125 mm)	0512AA
6" (150 mm)	0612AA
8" (200 mm)	0812AA
10" (250 mm)	1012AA

**SPLIT COUPLERS**

DIAMETER	PRODUCT CODE
3" (75 mm)	0311AA
4" (100 mm)	0411AA
5" (125 mm)	0511AA
6" (150 mm)	0611AA
8" (200 mm)	0811AA
10" (250 mm)	1011AAZ

**REDUCING TEES**

SIZE	PRODUCT CODE
(Main x Stub)	
5" x 4" (125 x 100 mm)	0524AA

**REDUCERS**

SIZE	PRODUCT CODE
(Main x Stub)	
4" x 3" (100 x 75 mm)	0314AA
5" x 4" (125 x 100 mm)	0514AA
6" x 4" (150 x 100 mm)	0614AA
6" x 5" (150 x 125 mm)	0516AA
8" x 6" (200 x 150 mm)	0816AA
10" x 8" (250 x 200 mm)	1018AA
12" x 10" (300 x 250 mm)	1210AA
15" x 10" (375 x 300 mm)	1510AA

**SNAP TEES**

SIZE	PRODUCT CODE
3" (75 mm)	0321AA
4" (100 mm)	0421AA
5" (125 mm)	0525AA
6" (150 mm)	0626AA

**EXTERNAL TAP TEES**

SIZE	PRODUCT CODE
3" x 6"/8" (75 x 150/200 mm)	0350AA
4" x 6"/8" (100 x 150/200 mm)	0450AA
4" x 10"/12" (100 x 250/300 mm)	0410AA
5" x 10"/12" (125 x 250/300 mm)	0550AA
5" x 15"/18" (125 x 375/450 mm)	0510AA
6" x 15"/18"/24" (150 x 375/450/600 mm)	0650AA

**INTERNAL TAP TEES**

SIZE	PRODUCT CODE
4" X 10"/12"	0410AA
4" X 6"/8"	0450AA
4" x 6"/8"/10"/12"	0480AA
3 15/16" (100 mm) saw	BK315SAW



**MULTI-REDUCING TEES**

SIZE	PRODUCT CODE
(Main x Stub)	
6" x 3"/4"/5"/6" (150 x 75/100/125/150 mm)	0644AA
8" x 4"/5"/6"/8" (200 x 100/125/150/200 mm)	0844AA
10" x 6"/8"/10" (250 x 150/200/250 mm)	1044AA

**BLIND TEES**

SIZE	PRODUCT CODE
3" (75 mm)	0341AA
4" (100 mm)	0441AA
5" (125 mm)	0541AA
6" (150 mm)	0641AA
8" (200 mm)	0841AA
10" (250 mm)	1041AA

**BLIND REDUCING TEES**

SIZE	PRODUCT CODE
(Main x Stub)	
8" x 8"/6"/4" (200/150/100 mm)	0845AA
10" x 10"/8" (250/200 mm)	1045AA
12" x 12"/10" (300/250 mm)	1247AA

**CROSS TEES**

SIZE	PRODUCT CODE
(Main x Stub)	
6" (150 mm)	0654AA

**WYES**

SIZE (Size on Size)	PRODUCT CODE
3" (75 mm)	0322AA
4" (100 mm)	0422AA
5" (125 mm)	0522AA
6" (150 mm)	0622AA
8" (200 mm)	0822AA

**90° SNAP ELBOWS**

SIZE	PRODUCT CODE
3" (75 mm)	0390AA
4" (100 mm)	0490AA

**45° SNAP ELBOWS**

SIZE	PRODUCT CODE
3" (75 mm)	0445AA

**INTERNAL END PLUGS**

DIAMETER	PRODUCT CODE
3" (75 mm) Solid	0333AA
4" (100 mm) Solid	0433AA
4" (100 mm) Perf	0434AA
5" (125 mm) Solid	0533AA
6" (150 mm) Solid	0633AA

**END CAPS**

DIAMETER	PRODUCT CODE	
	SNAP	SPLIT
3" (75 mm) Solid	0332AA	0331AA
4" (100 mm) Solid	0432AA	0431AA
5" (125 mm) Solid	0532AA	0531AA
6" (150 mm) Solid		0631AA
8" (200 mm) Solid	0832AA	0831AA
10" (250 mm) Solid	1032AA	
12" (300 mm) Solid		1267AA
15" (375 mm) Solid		1567AA
18" (450 mm) Solid		1867AA
24" (600 mm) Solid		2467AA

**EXTERNAL SNAP COUPLERS**

DIAMETER	PRODUCT CODE
6" (150 mm)	0613AA
8" (200 mm)	0813AA
10" (250 mm)	1013AA

**SPLIT BAND COUPLERS**

DIAMETER	PRODUCT CODE	
	COUPLER ONLY	COUPLER WITH GASKET
10" (250 mm)	1011AAZ	1066AA
12" (300 mm)	1265AA	1266AA
15" (375 mm)	1565AA	1566AA
18" (450 mm)	1865AA	1866AA
24" (600 mm)	2465AA	2412AA
30" (750 mm)	3065AA	3066AA
36" (900 mm)	3661AA	3662AA
42" (1050 mm)	4265AA	4266AA
48" (1200 mm)	4865AA	4866AA
60" (1500 mm)	6065AA	6066AA

**COUPLERS**

SIZE	PRODUCT CODE
4" (100 mm)	0413WT
6" (150 mm)	0613WT
8" (200 mm)	0813WT
10" (250 mm)	1013WT

**REDUCING COUPLERS**

SIZE	PRODUCT CODE
6" x 4" (150 x 100 mm)	0614WT
8" x 4" (200 x 100 mm)	0814WT
8" x 6" (200 x 150 mm)	0816WT
10" x 8" (250 x 200 mm)	1018WT
12" x 8" (300 x 200 mm)	1218WT
12" x 10" (300 x 250 mm)	1210WT

**MAR-MAC® COUPLERS**

DIAMETER	PRODUCT CODE
8" (200 mm)	0867RC
10" (250 mm)	1067RC
12" (300 mm)	1267RC
15" (375 mm)	1567RC
18" (450 mm)	1867RC
24" (600 mm)	2467RC
30" (750 mm)	3067RC
36" (900 mm)	3667RC
42" (1050 mm)	4267RC
48" (1200 mm)	4867RC
54" (1350 mm)	5467RC
60" (1500 mm)	6067RC

**MAR-MAC® COUPLERS DOUBLE WIDE**

DIAMETER	PRODUCT CODE
12" (300 mm)	1267RCD
15" (375 mm)	1567RCD
18" (450 mm)	1867RCD
24" (600 mm)	2467RCD
30" (750 mm)	3067RCD
36" (900 mm)	3667RCD
42" (1050 mm)	4267RCD
48" (1200 mm)	4867RCD
54" (1350 mm)	5467RCD
60" (1500 mm)	6067RCD

**DISSIMILIAR ADAPTERS**

SIZE	PRODUCT CODE
12" (300 mm)	1221AN
15" (375 mm)	1521AN
18" (450 mm)	1821AN
24" (600 mm)	2421AN
30" (750 mm)	3021AN
36" (900 mm)	3621AN
42" (1050 mm)	4221AN
48" (1200 mm)	4821AN
60" (1500 mm)	6021AN

**DUAL WALL FABRICATED REDUCERS**

<b>DIAMETER</b>	<b>N-12® PLAIN END</b>
10" x 4" (250 x 100 mm)	1070AN
10" x 6" (250 x 150 mm)	1071AN
10" x 8" (250 x 200 mm)	1072AN
12" x 4" (300 x 100 mm)	1270AN
12" x 6" (300 x 150 mm)	1271AN
12" x 8" (300 x 200 mm)	1272AN
12" x 10" (300 x 250 mm)	1273AN
15" x 4" (375 x 100 mm)	1570AN
15" x 6" (375 x 150 mm)	1571AN
15" x 8" (375 x 200 mm)	1572AN
15" x 10" (375 x 250 mm)	1573AN
15" x 12" (375 x 300 mm)	1574AN
18" x 4" (450 x 100 mm)	1870AN
18" x 6" (450 x 150 mm)	1871AN
18" x 8" (450 x 200 mm)	1872AN
18" x 10" (450 x 250 mm)	1873AN
18" x 12" (450 x 300 mm)	1874AN
18" x 15" (450 x 375 mm)	1875AN
24" x 4" (600 x 100 mm)	2470AN
24" x 6" (600 x 150 mm)	2471AN
24" x 8" (600 x 200 mm)	2472AN
24" x 10" (600 x 250 mm)	2473AN
24" x 12" (600 x 300 mm)	2474AN
24" x 15" (600 x 375 mm)	2475AN
24" x 18" (600 x 450 mm)	2476AN
30" x 4" (750 x 100 mm)	3070AN
30" x 6" (750 x 150 mm)	3071AN
30" x 8" (750 x 200 mm)	3072AN
30" x 10" (750 x 250 mm)	3073AN
30" x 12" (750 x 300 mm)	3074AN
30" x 15" (750 x 375 mm)	3075AN
30" x 18" (750 x 450 mm)	3076AN
30" x 24" (750 x 600 mm)	3077AN

## DUAL WALL FABRICATED REDUCERS

DIAMETER	N-12® PLAIN END
36" x 4" (900 x 100 mm)	3670AN
36" x 6" (900 x 150 mm)	3671AN
36" x 8" (900 x 200 mm)	3672AN
36" x 10" (900 x 250 mm)	3673AN
36" x 12" (900 x 300 mm)	3674AN
36" x 15" (900 x 375 mm)	3675AN
36" x 18" (900 x 450 mm)	3676AN
36" x 24" (900 x 600 mm)	3677AN
36" x 30" (900 x 750 mm)	3678AN
42" x 6" (1050 x 150 mm)	4271AN
42" x 8" (1050 x 200 mm)	4272AN
42" x 10" (1050 x 250 mm)	4273AN
42" x 12" (1050 x 300 mm)	4274AN
42" x 15" (1050 x 375 mm)	4275AN
42" x 18" (1050 x 450 mm)	4276AN
42" x 24" (1050 x 600 mm)	4277AN
42" x 30" (1050 x 750 mm)	4278AN
42" x 36" (1050 x 900 mm)	4279AN
48" x 12" (1200 x 300 mm)	4874AN
48" x 15" (1200 x 375 mm)	4875AN
48" x 18" (1200 x 450 mm)	4876AN
48" x 24" (1200 x 600 mm)	4877AN
48" x 30" (1200 x 750 mm)	4878AN
48" x 36" (1200 x 900 mm)	4879AN
48" x 42" (1200 x 1050 mm)	4842AN
60" x 24" (1500 x 600 mm)	6077AN
60" x 30" (1500 x 750 mm)	6078AN
60" x 36" (1500 x 900 mm)	6079AN
60" x 42" (1500 x 1050 mm)	6042AN
60" x 48" (1500 x 1200 mm)	6048AN

**TEES**

SIZE	PRODUCT CODE
4" (100 mm)	0460WT
6" (150 mm)	0661WT
8" (200 mm)	0862WT
10" (250 mm)	1063WT
12" (300 mm)	1264WT

**DUAL WALL TEES**

DIAMETER	N-12® PLAIN END
10" (250 mm)	1063ST
12" (300 mm)	1264ST
15" (375 mm)	1565AN
18" (450 mm)	1866AN
24" (600 mm)	2467AN
30" (750 mm)	3068AN
36" (900 mm)	3669AN
42" (1050 mm)	4251AN
48" (1200 mm)	4851AN
60" (1500 mm)	6051AN

**REDUCING TEES**

SIZE	PRODUCT CODE
6" x 4" (150 x 100 mm)	0660WT
8" x 4" (200 x 100 mm)	0863WT
8" X 6" (200 X 150 mm)	0836WT
10" x 4" (250 X 100 mm)	1060WT
10" x 6" (250 x 150 mm)	1036WT
10" x 8" (250 x 200 mm)	1062WT
12" x 4" (300 x 100 mm)	1260WT
12" x 6" (300 x 150 mm)	1236WT
12" x 10" (300 x 250 mm)	1263WT

**SWEEPING TEES**

SIZE	PRODUCT CODE
8" x 4" (200 x 100 mm)	0863WT
8" x 6" (200 x 150 mm)	0836WT
10" x 6" (250 x 150 mm)	1036WT
12" x 6" (300 x 150 mm)	1236WT

**DUAL WALL FABRICATED 22.5° BENDS**

<b>DIAMETER</b>	<b>N-12® PLAIN END</b>
4" (100 mm)	0492AN
6" (150 mm)	0692AN
8" (200 mm)	0892AN
10" (250 mm)	1092AN
12" (300 mm)	1292AN
15" (375 mm)	1592AN
18" (450 mm)	1892AN
24" (600 mm)	2492AN
30" (750 mm)	3092AN
36" (900 mm)	3692AN
42" (1050 mm)	4292AN
48" (1200 mm)	4892AN
60" (1500 mm)	6092AN

**DUAL WALL FABRICATED 45° BENDS**

<b>DIAMETER</b>	<b>N-12® PLAIN END</b>
10" (250 mm)	1094ST
12" (300 mm)	1294ST
15" (375 mm)	1597AN
18" (450 mm)	1897AN
24" (600 mm)	2497AN
30" (750 mm)	3097AN
36" (900 mm)	3697AN
42" (1050 mm)	4297AN
48" (1200 mm)	4897AN
60" (1500 mm)	6097AN

**DUAL WALL 45° STANDARD WYES**

<b>DIAMETER</b>	<b>N-12® PLAIN END</b>
10" (250 mm)	1083ST
12" (300 mm)	1284ST
15" (375 mm)	1585AN
18" (450 mm)	1886AN
24" (600 mm)	2487AN

**45° ELBOWS**

SIZE	PRODUCT CODE
4" (100 mm)	0494WT
6" (150 mm)	0694WT
8" (200 mm)	0894WT
10" (250 mm)	1094WT
12" (300 mm)	1294WT

**45° WYES**

SIZE	PRODUCT CODE
4" (100 mm)	0480WT
6" (150 mm)	0681WT
8" (200 mm)	0882WT
10" (250 mm)	1083WT
12" (300 mm)	1284WT

**45° REDUCING WYES**

SIZE	PRODUCT CODE
6" x 4" (150 x 100 mm)	0680WT
8" x 4" (200 x 100 mm)	0880WT
8" x 6" (200 x 150 mm)	0881WT
10" x 4" (250 x 100 mm)	1080WT
10" x 6" (250 x 150 mm)	1081WT
10" x 8" (250 x 200 mm)	1082WT
12" x 6" (300 x 150 mm)	1281WT
12" x 8" (300 x 150 mm)	1280WT
12" x 8" (300 x 200 mm)	1283WT

**DUAL WALL FABRICATED 90° BENDS**

DIAMETER	N-12® PLAIN END
10" (250 mm)	1099ST
12" (300 mm)	1299ST
15" (375 mm)	1598AN
18" (450 mm)	1898AN
24" (600 mm)	2498AN
30" (750 mm)	3098AN
36" (900 mm)	3698AN
42" (1050 mm)	4298AN
48" (1200 mm)	4898AN
60" (1500 mm)	6098AN



**90° ELBOWS**

SIZE	PRODUCT CODE
4" (100 mm)	0499WT
6" (150 mm)	0699WT
8" (200 mm)	0899WT
10" (250 mm)	1099WT
12" (300 mm)	1299WT

**END CAPS (INCLUDES 1 GASKET)**

DIAMETER	N-12® PLAIN END	N-12® WT
12" (300 mm)	1201AN	1201AN65B
15" (375 mm)	1501AN	1501AN65B
18" (450 mm)	1801AN	1801AN65B
24" (600 mm)	2401AN	2401AN65B
30" (750 mm)	3001AN	3001AN65B
36" (900 mm)	3601AN	3601AN65B
42" (1050 mm)	4201AN	4201AN65B
48" (1200 mm)	4801AN	4801AN65B
60" (1500 mm)	6001AN	6001AN65B

**SPLIT END CAPS**

DIAMETER	PRODUCT CODE
6" (150 mm)	0667AA
8" (200 mm)	0867AA
10" (250 mm)	1067AA
12" (300 mm)	1267AA
15" (375 mm)	1567AA
18" (450 mm)	1867AA
24" (600 mm)	2467AA

**NON-PRESSURE PIPE END PLUG WITH GASKETS\***

DIAMETER	PRODUCT CODE
8" (200 mm)	0833AA
10" (250 mm)	1033AA
12" (300 mm)	1233AA
15" (375 mm)	1533AA
18" (450 mm)	1833AA
24" (600 mm)	2433AA
30" (750 mm)	3033AA
36" (900 mm)	3633AA
42" (1050 mm)	4233AA
48" (1200 mm)	4833AA
60" (1500 mm)	6033AA

\*Not intended for permanent use or vertical orientation.

# Ancillary Products

We mean it when we say we have the total water management solutions you need to get your investment in the ground. ADS sells more than drainage pipe. From animal guards to tile tape and everything in between, ADS has your projects covered from start to finish.

SCAN for the digital  
product catalog.





## ANIMAL GUARDS

DIAMETER	DESCRIPTION	PRODUCT CODE
4" (100 mm)	Metal Animal Guard (Finger)	0470DA
	Animal Guard (Solid)	0471DA
6" (150 mm)	Metal Animal Guard (Finger)	0670DA
	Animal Guard (Solid)	0671DA
8" (200 mm)	Metal Animal Guard (Finger)	0870DA
	Animal Guard (Solid)	0871DA
10" (250 mm)	Metal Animal Guard (Finger)	1070DA
	Animal Guard (Solid)	1071DA
12" (300 mm)	Metal Animal Guard (Finger)	1270DA
15" (375 mm)	Metal Animal Guard (Finger)	1570DA
18" (450 mm)	Metal Animal Guard (Finger)	1870DA
24" (600 mm)	Metal Animal Guard (Finger)	2470DA
30" (750 mm)	Metal Animal Guard (Finger)	3070DA
36" (900 mm)	Metal Animal Guard (Finger)	3670DA

## FLAP GATES

DIAMETER	PRODUCT CODE
4" (100 mm)	0440DA
6" (150 mm)	0640DA
8" (200 mm)	0840DA
10" (250 mm)	1040DA
12" (300 mm)	1240DA
15" (375 mm)	1540DA
18" (450 mm)	1840DA
24" (600 mm)	2440DA
30" (750 mm)	3040DA
36" (900 mm)	3640DA

## LAYOUT FLAGS

DESCRIPTION	PRODUCT CODE
Layout Flags	7439MC

## BLACK TILE TAPE

DESCRIPTION	AVAIL. LENGTHS	PRODUCT CODE
2" (50 mm) Black Tape	100' (30.5 m) roll	1137KA
1/2" (12.5 mm) Black Filament Tape	100' (30.5 m) roll	1147KA

## FLARED END SECTIONS

SIZE	PRODUCT CODE
10" (250 mm)	1015NP
12" (300 mm) / 15" (375 mm)	1215NP
18" (450 mm)	1810NP
24" (600 mm)	2410NP
30" (750 mm)	3015NP
36" (900 mm)	3615NP

## METAL END SECTIONS

SIZE	PRODUCT CODE
8" (200 mm)	0875NS
10" (250 mm)	1075NS
12" (300 mm)	1275NS
15" (375 mm)	1575NS
18" (450 mm)	1875NS
24" (600 mm)	2475NS
30" (750 mm)	3075NS
36" (900 mm)	3675NS
42" (1050 mm)	4275NS
48" (1200 mm)	4875NS
60" (1500 mm)	6075NS

## FOUNDATION DRAINAGE PRODUCTS

DESCRIPTION	DIMENSIONS	PRODUCT CODE
14 gal. (53L) Sump Liner	18" diameter x 24" height (450 x 600 mm)	1524ADH
19 gal. (72L) Sump Liner	18" diameter x 30" height (450 x 750 mm)	1530ADH
Solid, Locking Sump Lid	18" diameter (450 mm)	1537ADL
Notched, Locking Sump Lid	18" diameter (450 mm)	1537ADNL
Radon Vented Lid	18" diameter (450 mm)	1538AD
Radon Dual Purpose Vented Liner	20" diameter x 24" height (500 x 600 mm)	1524ADR

# Water Control Structure

Inline Water Level Control Structures™ effectively manage the water table in your field, wetland or pond by setting stoplogs within the structure to your desired water-level height. Management allows for controlled release of outlet flow, the retention of valuable nutrients and effective flood mitigation.

## FEATURES

- Constructed of rugged 1/2" PVC with a lockable plastic lid
- Stainless steel screws and custom anodized aluminum corner extrusions used for strength and durability
- Rugged injection molded stoplogs in 5" and 7" heights for adjustability (included in structures with 4" – 12" pipe sizes)
- PVC stoplogs with metal hooks in 5" and 7" heights for adjustability (included in structures with 15" – 24" pipe sizes)
  - Stoplogs must remain in track during structure installation
  - Structures are intended for gravity flow; some seepage may occur

## BENEFITS

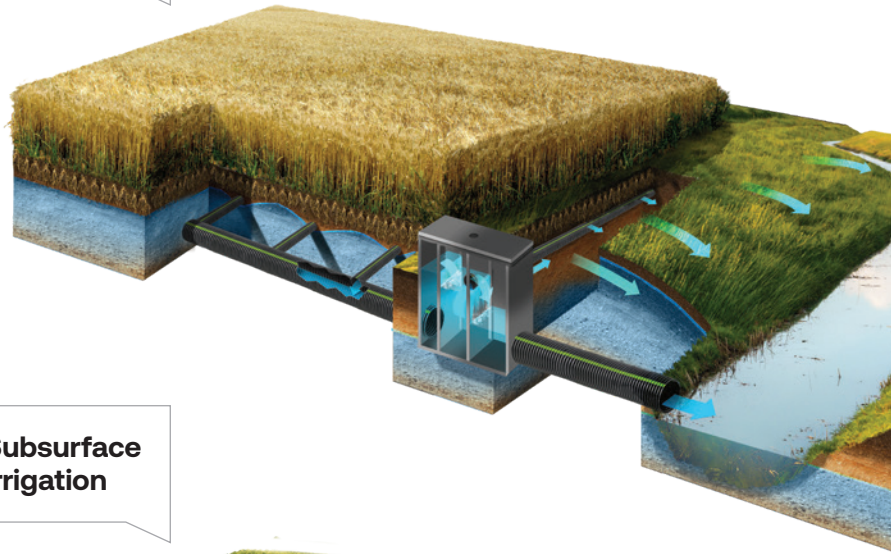
- Increases yields by controlling root zone water availability
- Enables management of changing climate conditions
- Increases profitability of land with limited productivity
- Applicable within various nutrient-reduction systems (saturated buffers, drainage water management, sub-irrigation, bioreactors, etc.)

SCAN the code for more information.





**Saturated Buffer Strip**



**Subsurface Irrigation**



**Bioreactors**



# Surface Inlets

Every facet of water management is vital to keep your business flowing. And when you need to remove water faster, surface inlets are the go-to option for reducing water pooling in fields. These water management systems are commonly used in terrace tiling and pattern tiling systems.

SCAN for the digital  
product catalog.







## HICKENBOTTOMS

SIZE	DESCRIPTION	PRODUCT CODE
5" x 1" (125 x 25 mm)	Orange Intake (12 Holes)	5013GC
5" x 1" (125 x 25 mm)	Orange Riser with Cap-Top	5023GC
5" x 5/16" (125 x 8 mm)	Orange Ext-Btm	5033GC
5" (125 mm)	Blind Tee	5043GC
5" (125 mm)	Restrictor	5063GC
6" x 1" (150 x 25 mm)	Orange Riser with Cap-Top	6023GC
6" x 5/16" (150 x 8 mm)	Orange Ext-Btm	6033GC
6" (150 mm)	Black Slotted Intake	6073GC
6" (150 mm)	Black Blank Section	6053GC
6" (150 mm)	Black Riser Blind Tee	6043GC
6" (150 mm)	Restrictor	6063GC
8" x 1" (200 x 25 mm)	Orange Riser with Cap-Top	0823GC
8" x 5/16" (200 x 8 mm)	Orange Ext-Btm	0833GC
8" (200 mm)	Black Slotted Intake	0873GC
8" (200 mm)	Black Blank Section	0853GC
8" (200 mm)	Black Riser Blind Tee	0843GC
8" (200 mm)	Restrictor	0863GC
10" x 1" (250 x 25 mm)	Orange Riser with Cap-Top	1023GC
10" x 5/16" (200 x 8 mm)	Orange Ext-Btm	1033GC
10" (250 mm)	Black Slotted Intake	1073GC
10" (250 mm)	Black Blank Section	1053GC
10" (250 mm)	Black Riser Blind Tee	1043GC
12" x 1" (300 x 25 mm)	Orange Riser with Cap-Top	1223GC
12" x 5/16" (300 x 8 mm)	Orange Ext-Btm	1233GC
12" (300 mm)	Black Slotted Intake	1273GC
12" (300 mm)	Black Blind Tee	1243GC

## QUICK DRAIN RISERS

SIZE	PRODUCT CODE
6" Diameter x 6" Inlet (150 x 150 mm)	0606QD
10" Diameter x 6" Inlet (250 x 150 mm)	1006QD
10" Diameter x 8" Inlet (250 x 200 mm)	1008QD
6" Diameter x 6" Inlet (150 x 150 mm) with Adjustable Inlet	0606TPTQD

## PRECISION INTAKES

SIZE	DESCRIPTION	PRODUCT CODE
6" x 1" (150 x 25 mm)	Yellow Riser with Cap-Top	6023GKY
6" x 5/16" (150 x 8 mm)	Yellow Ext-Btm	6033GKY
6" (150 mm)	Black Slotted Intake	6073GKY
6" (150 mm)	Black Blank Section	6053GKY
6" (150 mm)	Black Riser Blind Tee	6043GKY
6" (150 mm)	Restrictor	6063GKY
8" x 1" (200 x 25 mm)	Yellow Riser with Cap-Top	0823GKY
8" x 5/16" (200 x 8 mm)	Yellow Ext-Btm	0833GKY
8" (200 mm)	Black Slotted Intake	0873GKY
8" (200 mm)	Black Blank Section	0853GKY
8" (200 mm)	Black Riser Blind Tee	0843GKY
8" (200 mm)	Restrictor	0863GKY
10" x 1" (250 x 25 mm)	Yellow Riser with Cap-Top	1023GKY
10" x 5/16" (200 x 8 mm)	Yellow Ext-Btm	1033GKY
10" (250 mm)	Black Slotted Intake	1073GKY
10" (250 mm)	Black Blank Section	1053GKY
10" (250 mm)	Black Riser Blind Tee	1043GKY

## BAR GUARDS

DIAMETER	PRODUCT CODE
4" (100 mm)	0420DA
6" (150 mm)	0620DA
8" (200 mm)	0820DA
10" (250 mm)	1020DA
12" (300 mm)	1220DA
15" (375 mm)	1520DA
18" (450 mm)	1820DA
24" (600 mm)	2420DA
30" (750 mm)	3020DA
36" (900 mm)	3620DA

# HP Agricultural Lift Station

Created with farmers and landowners top of mind, lift stations come equipped with user-friendly technology to create one system that manages water flow rates, field water-table levels and power consumption. And with a Remote Monitoring System, your lift station can be accessed via any web-enabled device so that you can control your water management system from anywhere.

## FEATURES

- 1800 rpm means longer bearing motor lifetime and less vibration
- Unique impeller design created, optimal gallon-per-minute-per-watt performance
- Electronic panel is completely enclosed and is protected from the environmental elements
- Remote Monitoring System is satellite-based
- Electrical schematic stickers on enclosure door show electrical connections and instructions

## BENEFITS

- Increases yield by controlling root zone water availability
- One system that manages water flow rates, field water-table levels and power consumption
- Reduces on and off cycles
- Cloud-based data storage allows for historical comparisons
- Factory-trained support available 24/7 from pump manufacturer



**SCAN** the code for more information.



## HP AGRICULTURE LIFT STATION

SIZE	PRODUCT CODE
3 HP-VFD/Panel/UL-230 Volt Single Phase No Legs	DTM-3230P
3 HP-VFD/Panel/ UL-460 Volt Single Phase No Legs	DTM-3460P
3 HP-VFD/Panel/ UL-230 Volt Three Phase No Legs	DTM-32303P
3 HP-VFD/Panel/ UL-460 Volt Three Phase No Legs	DTM-34603P
3 HP-VFD/Panel/ UL 230 Volt Single Phase Duplex (2 VFDs)	DTM-320P2
3 HP-VFD/Panel/ UL-230 Volt Single Phase No Legs-Canada	DTM-3230PCA
3 HP-VFD/Panel/ UL-460 Volt Single Phase No Legs-Canada	DTM-3460PCA
3 HP Pump Only High Flow 6" Discharge CSA	DTM-3WF
4 HP Pump Only 6" Discharge	DTM-4WF
5 HP-VFD/Panel/ UL-230 Volt Single Phase No Legs	DTM-5230P
5 HP-VFD/Panel/ UL-460 Volt Single Phase No Legs	DTM-5460P
5 HP-VFD/Panel/ UL-230 Volt Three Phase No Legs	DTM-52303P
5 HP-VFD/Panel/ UL-460 Volt Three Phase No Legs	DTM-54603P
5 HP-VFD/Panel/ UL-230 Volt Single Phase Duplex (2 VFDs)	DTM-5230P2
5 HP-VFD/Panel/ UL-230 Volt Single Phase No Legs-Canada	DTM-5230PCA
5 HP-VFD/Panel/ UL-460 Volt Single Phase No Legs-Canada	DTM-5460PCA
5 HP Pump Only High Flow 6" Discharge CSA	DTM-5WF
7.5 HP-VFD/Panel/UL-230 Volt Single Phase No Legs	DTM-75230P
7.5 HP-VFD/Panel/ UL-460 Volt Single Phase No Legs	DTM-75460P
7.5 HP-VFD/Panel/UL-230 Volt Three Phase No Legs	DTM-752303P
7.5 HP-VFD/Panel/UL-460 Volt Three Phase No Legs	DTM-754603P
7.5 HP-VFD/Panel/UL-230 Volt Single Phase Duplex (2 VFDs)	DTM-75230P2
7.5 HP-VFD/Panel/UL-230 Volt Single Phase No Legs-Canada	DTM-75230PCA
7.5 HP-VFD/Panel/UL-460 Volt Single Phase No Legs-Canada	DTM-75460PCA
7.5 HP Pump Only High Flow 8" Discharge CSA	DTM-75HF
10.5 HP-VFD/Panel/UL-230 Volt Single Phase No Legs	DTM-10230P
10.5 HP-VFD/Panel/UL-460 Volt Single Phase No Legs	DTM-10460P
10.5 HP-VFD/Panel/UL-230 Volt Three Phase No Legs	DTM-102303P
10.5 HP-VFD/Panel/UL-460 Volt Three Phase No Legs	DTM-104603P
10.5 HP-VFD/Panel/UL-230 Volt Single Phase Duplex (2 VFDs)	DTM-10230P2
10.5 HP-VFD/Panel/UL-230 Volt Single Phase No Legs-Canada	DTM-10230PCA
10.5 HP-VFD/Panel/UL-460 Volt Single Phase No Legs-Canada	DTM-10460PCA
10.5 HP Pump Only High Flow 8" Discharge CSA	DTM-10HF
15 HP-VFD/Panel/UL-230 Volt Single Phase No Legs	DTM-15230P
15 HP-VFD/Panel/UL-460 Volt Single Phase No Legs	DTM-15460P
15 HP-VFD/Panel/UL-230 Volt Three Phase No Legs	DTM-152303P
15 HP-VFD/Panel/UL-460 Volt Three Phase No Legs	DTM-154603P
15 HP-VFD/Panel/UL-230 Volt Single Phase Duplex (2 VFDs)	DTM-15230P2
15 HP-VFD/Panel/UL-230 Volt Single Phase No Legs-Canada	DTM-15230PCA
15 HP-VFD/Panel/UL-460 Volt Single Phase No Legs-Canada	DTM-15460PCA
15 HP Pump Only High Flow 12" Discharge CSA	DTM-15HF
20 HP-VFD/Panel/UL-230 Volt Single Phase No Legs	DTM-20230P
20 HP-VFD/Panel/UL-460 Volt Single Phase No Legs	DTM-20460P
20 HP-VFD/Panel/UL-230 Volt Three Phase No Legs	DTM-202303P
20 HP-VFD/Panel/UL-460 Volt Three Phase No Legs	DTM-204603P
20 HP-VFD/Panel/UL-230 Volt Single Phase No Legs-Canada	DTM-20230PCA
20 HP-VFD/Panel/UL-460 Volt Single Phase No Legs-Canada	DTM-20460PCA
20 HP Pump Only High Flow 12" Discharge CSA	DTM-20HF
Ami Internal-Delta Only (1 Year Subscription)	DTM-AMI
Rain Gauge	DTM-RG
Transducer Kit No PVC	DTM-TKNS
Dtm-Light	DTM-LIGHT
36" Powder Coated Steel Lid	DTM-36LID
48" Powder Coated Steel Lid	DTM-48LID
60" Powder Coated Steel Lid	DTM-60LID
Legs For Control Panel	DTM-LEGS
36" X 15' HP Triplewall Lift Station 60" Sump	3624ANLS
36" X 15' HP Triplewall Lift Station 42" Sump	3624ANLS42
48" X 15' HP Triplewall Lift Station 60" Sump	4830ANLS
48" X 15' HP Triplewall Lift Station 42" Sump	4830ANLS42
60" X 15' HP Triplewall Lift Station 60" Sump	6000ANPT
60" X 15' HP Triplewall Lift Station 42" Sump	6000ANPT

# Geotextiles

Geotextiles prevent and control erosion in high erosion-prone areas. They serve as an underlayer to reinforce ditches from erosion or settling.

And, they keep the division between aggregate and soil so your investment lasts longer.

Geotextiles are a true multi-use product.

SCAN for the digital product catalog.





### LIGHT WEIGHT · NONWOVEN

WEIGHT	W X L	SY/ROLL	PRODUCT CODE
3 oz. (85 g)	12.5' x 360' (3.8 x 109.7 m)	500 (418 m <sup>2</sup> )	0311TG
3 oz. (85 g)	15' x 360' (4.6 x 109.7 m)	600 (502 m <sup>2</sup> )	0311TS
3.5 oz. (99 g)	2' x 360' (600 x 109.7 m)	80 (67 m <sup>2</sup> )	0351TC
3.5 oz. (99 g)	3' x 360' (900 x 109.7 m)	120 (100 m <sup>2</sup> )	0351TA
3.5 oz. (99 g)	4' x 360' (1.2 x 109.7 m)	160 (134 m <sup>2</sup> )	0351TB
3.5 oz. (99 g)	7.5' x 360' (2.3 x 109.7 m)	300 (251 m <sup>2</sup> )	0351TT
3.5 oz. (99 g)	12.5' x 360' (3.8 x 109.7 m)	500 (418 m <sup>2</sup> )	0351TG
3.5 oz. (99 g)	15' x 360' (4.6 x 109.7 m)	600 (502 m <sup>2</sup> )	0351TS
4.0 oz. (113 g)	7.5' x 360' (2.3 x 109.7 m)	300 (251 m <sup>2</sup> )	0401TT
4.0 oz. (113 g)	12.5' x 360' (3.8 x 109.7 m)	500 (418 m <sup>2</sup> )	0401TG
4.0 oz. (113 g)	15' x 360' (4.6 x 109.7 m)	600 (502 m <sup>2</sup> )	0401TS
4.5 oz. (128 g)	12.5' x 360' (3.8 x 109.7 m)	500 (418 m <sup>2</sup> )	0451TG
4.5 oz. (128 g)	15' x 360' (4.6 x 109.7 m)	600 (502 m <sup>2</sup> )	0451TS

### MEDIUM WEIGHT · NONWOVEN

WEIGHT	W X L	SY/ROLL	PRODUCT CODE
6 oz. (170 g)	12.5' x 360' (3.8 x 109.7 m)	500 (418 m <sup>2</sup> )	0601TG
6 oz. (170 g)	15' x 300' (4.6 x 91.4 m)	500 (418 m <sup>2</sup> )	0601TS
7 oz. (198 g)	6' x 360' (1.8 x 109.7 m)	240 (201 m <sup>2</sup> )	0701TE
7 oz. (198 g)	12.5' x 360' (3.8 x 109.7 m)	500 (418 m <sup>2</sup> )	0701TG
7 oz. (198 g)	15' x 300' (4.6 x 91.4 m)	500 (418 m <sup>2</sup> )	0701TS
8 oz. (227 g)	12.5' x 360' (3.8 x 109.7 m)	500 (418 m <sup>2</sup> )	0801TG
8 oz. (227 g)	15' x 300' (4.6 x 91.4 m)	500 (418 m <sup>2</sup> )	0801TS

### HEAVY WEIGHT · NONWOVEN

WEIGHT	W X L	SY/ROLL	PRODUCT CODE
10 oz. (284 g)	15' x 300' (4.6 x 91.4 m)	500 (418 m <sup>2</sup> )	1001TS
12 oz. (340 g)	15' x 300' (4.6 x 91.4 m)	500 (418 m <sup>2</sup> )	1201TS
16 oz. (454 g)	15' x 300' (4.6 x 91.4 m)	500 (418 m <sup>2</sup> )	1601TS

### TURF REINFORCEMENT MAT (TRM) · PERMANENT

W X L	SY/ROLL	PRODUCT CODE
7.5' x 120' (2.3 x 36.6 m)	100 (84 m <sup>2</sup> )	PP58GTR
7.5' x 120' (2.3 x 36.6 m)	100 (84 m <sup>2</sup> )	PP510GTR
7.5' x 120' (2.3 x 36.6 m)	100 (84 m <sup>2</sup> )	PP512GTR

### SILT FENCE

DESCRIPTION	QUANTITY
2' x 100' (.6 x 30 m) rolls with 11 hardwood stakes per roll	3301WE
3' x 100' (.9 x 30 m) rolls with 11 hardwood stakes per roll	3302WE
Premium Silt Fence - AASHTO 3' x 100' (.9 x 30 m)	3302WP



## WOVEN FABRIC SYR STABILIZATION · WOVEN

GRAB TENSILE	W X L	SY/ROLL	PRODUCT CODE
200	12.5' x 432' (3.8 x 131.7 m)	600 (502 m <sup>2</sup> )	200WTK
200	15' x 360' (4.6 x 109.7 m)	600 (502 m <sup>2</sup> )	200WTS
200	17.5' x 309' (5.3 x 94.2 m)	600 (502 m <sup>2</sup> )	200WTM
250	12.5' x 360' (3.8 x 109.7 m)	500 (418 m <sup>2</sup> )	250WTK
250	17.5' x 258' (5.3 x 78.6 m)	500 (418 m <sup>2</sup> )	250WTM
270	12.5' x 360' (3.8 x 109.7 m)	500 (418 m <sup>2</sup> )	270WTK
270	15' x 300' (4.6 x 91.4 m)	500 (418 m <sup>2</sup> )	270WTS
270	17.5' x 258' (5.3 x 78.6 m)	500 (418 m <sup>2</sup> )	270WTM
270HP	15' x 300' (4.6 x 91.4 m)	500 (418 m <sup>2</sup> )	270HPTS
270HP	17' x 258' (5.3 x 78.6 m)	500 (418 m <sup>2</sup> )	270HPTM
370HP	17.5' x 257' (5.3 x 78.3 m)	500 (418 m <sup>2</sup> )	370HPTS
570HP	15' x 300' (4.6 x 91.4 m)	500 (418 m <sup>2</sup> )	570HPTS
315	12.5' x 360' (3.8 x 109.7 m)	500 (418 m <sup>2</sup> )	315WTK
315	15' x 300' (4.6 x 91.4 m)	500 (418 m <sup>2</sup> )	315WTS
315	17.5' x 258' (5.3 x 78.6 m)	500 (418 m <sup>2</sup> )	315WTM
465	12.5' x 360' (3.8 x 109.7 m)	500 (418 m <sup>2</sup> )	315WTK

## WOVEN FABRIC SYR MEDIUM STRENGTH · WOVEN

W X L	SY/ROLL	PRODUCT CODE
15' x 300' (4.6 x 91.4 m)	500 (418 m <sup>2</sup> )	02X2WF
15' x 300' (4.6 x 91.4 m)	500 (418 m <sup>2</sup> )	03X3HFTS
15' x 300' (4.6 x 91.4 m)	500 (418 m <sup>2</sup> )	04X4HFTS
12.5' x 360' (3.8 x 109.7 m)	500 (418 m <sup>2</sup> )	03X3HFTK
12.5' x 216' (3.8 x 65.8 m)	300 (251 m <sup>2</sup> )	04X4TK
15' x 180' (4.6 x 54.9 m)	300 (251 m <sup>2</sup> )	04X4TS

## WOVEN FABRIC SYR MONOFILAMENT · WOVEN

W X L	SY/ROLL	PRODUCT CODE
12' x 300' (3.6 x 91.4 m)	400 (334 m <sup>2</sup> )	104FWF
15' x 300' (4.6 x 91.4 m)	500 (418 m <sup>2</sup> )	2403W
15' x 300' (4.6 x 91.4 m)	500 (418 m <sup>2</sup> )	2404W
15' x 300' (4.6 x 91.4 m)	500 (418 m <sup>2</sup> )	2300W

## FABRIC PINS

SIZE	QUANTITY	PRODUCT CODE
6" (50 mm) Staple	1,000/box	3206TP
12" (300 mm) Pin	100/box	3212TP

## EROSION CONTROL BLANKETS (ECB) · BIODEGRADABLE

W X L	SY/ROLL	PRODUCT CODE
7.5' x 120' (2.3 x 36.6 m)	100 (84 m <sup>2</sup> )	OOS1TT
7.5' x 120' (2.3 x 36.6 m)	100 (84 m <sup>2</sup> )	OOS2TT
7.5' x 120' (2.3 x 36.6 m)	100 (84 m <sup>2</sup> )	OCS2TT
7.5' x 120' (2.3 x 36.6 m)	100 (84 m <sup>2</sup> )	OOC2TT

## BIAXIAL GEOGRIDS

W X L	SY/ROLL	PRODUCT CODE
12.5' x 328' (3.8 x 100 m)	455 (380 m <sup>2</sup> )	BX114
12.5' x 246' (3.8 x 75 m)	341 (285 m <sup>2</sup> )	BX124
12.5' x 164' (3.8 x 50 m)	227 (190 m <sup>2</sup> )	BX374
12.5' x 164' (3.8 x 50 m)	227 (190 m <sup>2</sup> )	BX150
12.5' x 328' (3.8 x 100 m)	455 (380 m <sup>2</sup> )	BX1515
12.5' x 328' (3.8 x 100 m)	455 (380 m <sup>2</sup> )	BX224
12.5' x 164' (3.8 x 50 m)	227 (190 m <sup>2</sup> )	BX154

# Stay in touch!

Don't be a stranger. Contact your local ADS Ag sales representative to learn more about products that will elevate your business.

## Leadership Team



**Darla Huff**  
Director of Agriculture  
darla.huff@adspipe.com



**John Freeman**  
National Sales Manager  
john.freeman@adspipe.com



**Logan Chamberlain**  
Market Manager  
logan.chamberlain@adspipe.com



**Al Dahlen**  
Business Development Manager  
al.dahlen@adspipe.com



**Kevin Adams**  
Regional Sales Manager  
kevin.adams@adspipe.com  
Ohio, Indiana, Wisconsin,  
Michigan, Illinois, Kentucky,  
Tennessee



**Shaun Mickelson**  
Regional Sales Manager  
shaun.mickelson@adspipe.com  
North Dakota, South Dakota,  
Iowa, Nebraska, Minnesota,  
Kansas, Missouri



**SCAN** the code to  
contact a representative.

# Sales Representatives



**Adam Esbenshade**  
adam.esbenshade@adspipe.com  
Ohio



**Becca Scott**  
rebecca.scott@adspipe.com  
Illinois, Indiana



**Braedy Lueth**  
braedy.lueth@adspipe.com  
South Dakota, Minnesota



**Casey Potts**  
casey.potts@adspipe.com  
Michigan



**Cole Rath**  
cole.rath@adspipe.com  
Iowa, Nebraska



**Dave Randolph**  
david.randolph@adspipe.com  
Illinois



**Eric Esser**  
eric.esser@adspipe.com  
Minnesota



**Gary Nordick**  
gary.nordick@adspipe.com  
Minnesota, North Dakota



**George Goodwin**  
george.goodwin@adspipe.com  
Kentucky, Tennessee



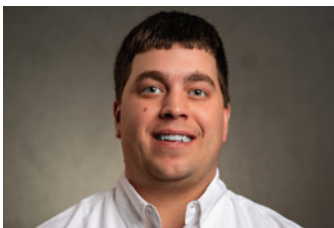
**Jason Miller**  
jason.miller@adspipe.com  
Indiana, Michigan, Ohio



**Kerry Hughes**  
kerry.hughes@adspipe.com  
Ohio



**Kevin Kingery**  
kevin.kingery@adspipe.com  
Iowa



**Kirby Schiffbauer**  
kirby.schiffbauer@adspipe.com  
Illinois, Wisconsin



**Mike Arndorfer**  
mike.arndorfer@adspipe.com  
Iowa



**Nathan Ryan**  
nathan.ryan1@adspipe.com  
Kansas, Missouri



**Ron Mellott**  
ron.mellott@adspipe.com  
Michigan



**Scott Bates**  
scott.bates@adspipe.com  
Ohio



**Seth Mellott**  
seth.mellott@adspipe.com  
Michigan



**Tegan Simmons**  
tegan.simmons@adspipe.com  
Indiana



**Tim Dahl**  
tim.dahl@adspipe.com  
Minnesota, South Dakota



## ADVANCED DRAINAGE SYSTEMS, INC.

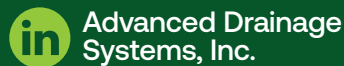
4640 Trueman Blvd. Hilliard, OH 43026

800-733-3689 | [adspipe.com](http://adspipe.com)

---

**Follow us!** We have social media channels on Facebook, Instagram, Twitter and LinkedIn.

---



ADS "Terms and Conditions of Sale" are available on the ADS website, [www.adspipe.com](http://www.adspipe.com)

The ADS logo, The Green Stripe, N-12®, Grain Aire®, G.R.O.W. Analysis™ and Land Purchase Analysis™ are registered trademarks of Advanced Drainage Systems, Inc. INSERTA TEE® is a registered trademark of Inserta Fittings Co. Hickenbottom® is a registered trademark of Hickenbottom, Inc. Mar Mac® is a registered trademark of Mar Mac Construction Products Co., Inc.

© 2023 Advanced Drainage Systems, Inc. #11047 08/23 FW