

Technical Note

TN 1.07 Manhole Adapter Guide - SaniTite® HP, HP Storm, and N-12® HDPE Pipe

Manhole Connection Basics

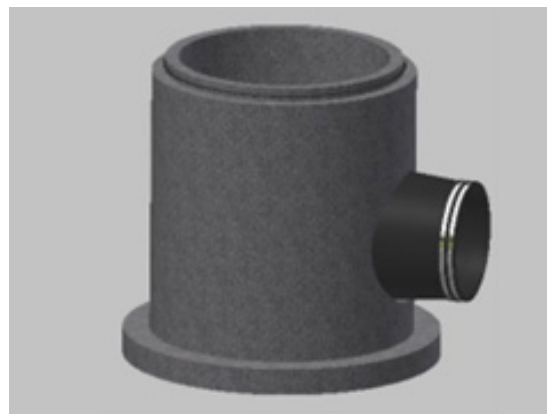
Compression Connections

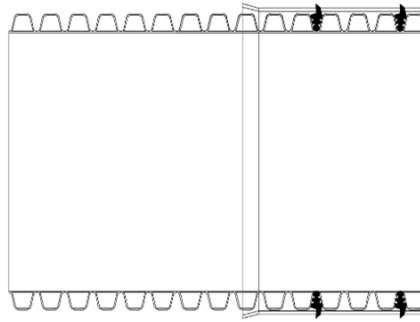
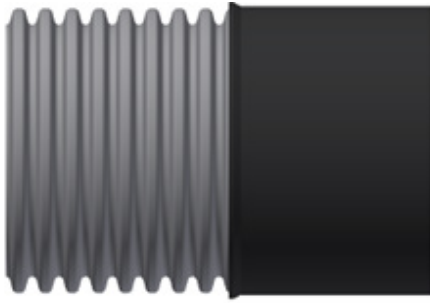
- Gasket is cast into the wall of the manhole at the precaster's facility. Gasket cannot be field installed.
- A-LOK® Premium™ is recommended for all connections. The Premium gasket has higher compression than the A-LOK STM standard gasket, which aids in sealing against the outer wall of SaniTite HP triple wall pipe and the SaniTite HP manhole adapter sleeve for dual wall pipe.
- A-LOK gaskets always need to connect to a smooth surface of pipe - Nyloplast® adapter or ADS adapter sleeves are required when using dual wall pipe. Triple wall pipe requires no adapter.



Boot Connections

- Gasket can be installed by the precaster or field-installed by the contractor. The precaster will form the required hole in the structure and either the precaster or the contractor will install the boot.
- Preferred manufacturers are Press Seal® (PSX Direct Drive) and Trelleborg (Kor-n-Seal®).
- Boots always need to connect to a smooth surface. You can connect to a dual wall pipe with an installed corrugated pipe adapter (valley fill gasket) or a manhole adapter sleeve.



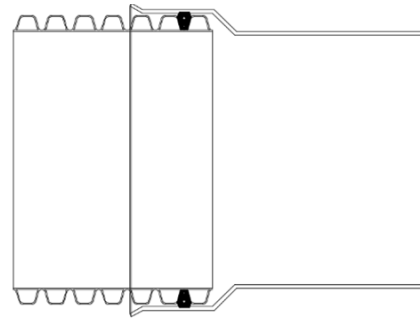
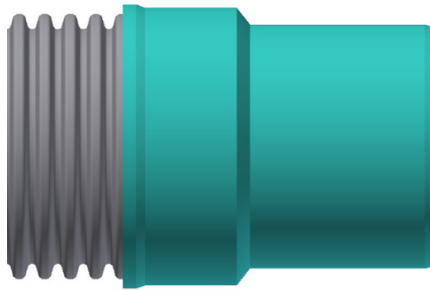


Sleeve Manhole Adapter

Boot or Compression Connection

HP & HDPE
12" - 24" (300-600 mm)
(XX22AAPP)

Sanitary or Storm Joint
Not Available for 21" (525 mm)

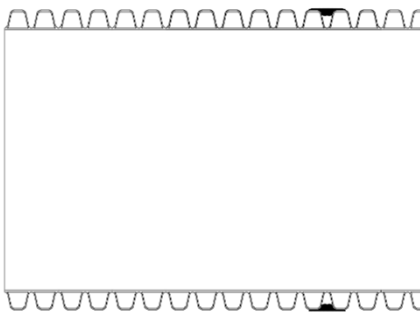
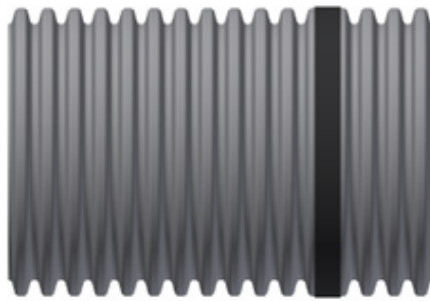


Nyloplast PVC Manhole Adapter

Same OD as SDR35
Boot or Compression Connection

HP Joint
12" - 24" (300-600 mm)
(XX57AGHPU2) Sanitary
12" - 30" (300-750 mm)
(XX57AGHPU) Storm

HDPE Joint
12" - 30" (300-750 mm) (XX77AGU) Storm

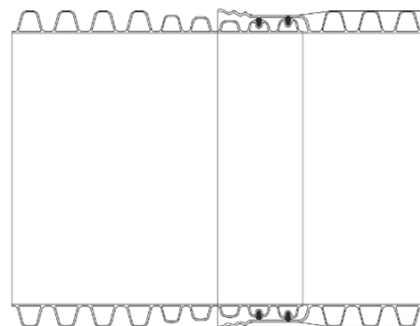
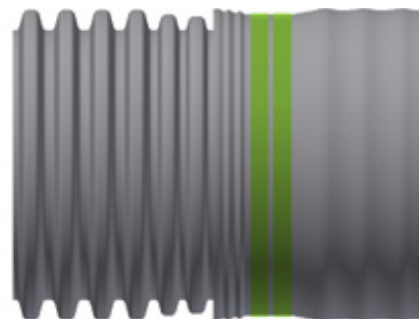


Corrugated Pipe Adapter Gasket

Boot Connection Only
(XX50PS)

12" - 30" (300-750 mm)
Sanitary or Storm Joint

36" - 60" (900-1500 mm)
Storm Joint



SaniTite HP TW to HP Storm DW

Boot or Compression Connection
30" - 60" (750-1500 mm) Dual Wall

Storm Joint
Coordinate with plant to ensure
correct gasket for compatibility is
installed prior to shipment.

Consult ADS Series 200 Standard Details

