



| GBIF logos





| Standard

This is GBIF preferred logo.

Recommended use over grey-to-black backgrounds.

Different media permit accurate reproduction at different scales. For that reason, we ask those using the logo respect not only the proportions of each version of the logo, but also the following minimum widths.

For digital and professional printing: 15 mm

For web uses: 60 px





| Full logo

First alternative version: for use in cases where spelling out the acronym provides additional context or clarity.

Recommended use over grey-to-black backgrounds.

Minimum widths:

For digital and professional printing: 30 mm

For web uses: 120 px



| Logo mark

For more limited use as icon or emblem.

Recommended use over grey-to-black backgrounds.

Minimum widths:

For digital and professional printing: 10 mm

For web uses: 20 px





White

| Standard

This is GBIF preferred logo.

Recommended use over grey-to-black backgrounds, GBIF palette-colored backgrounds or images.





White

Full logo

First alternative version: for use in cases where spelling out the acronym provides additional context or clarity.

Recommended use over grey-to-black backgrounds, GBIF palette-colored backgrounds or images.



White

| Logo mark

For more limited use as icon or emblem.

Recommended use over grey-to-black backgrounds, GBIF palette-colored backgrounds or images.





Monochrome

| Standard

This is GBIF preferred logo.

Recommended use for monochromatic purposes, over grey-to-white backgrounds.





Monochrome

| Full logo

First alternative version: for use in cases where spelling out the acronym provides additional context or clarity.

Recommended use for monochromatic purposes, over grey-to-white backgrounds.



| Logo mark

For more limited use as icon or emblem.

Recommended use for monochromatic purposes, over grey-to-white backgrounds.

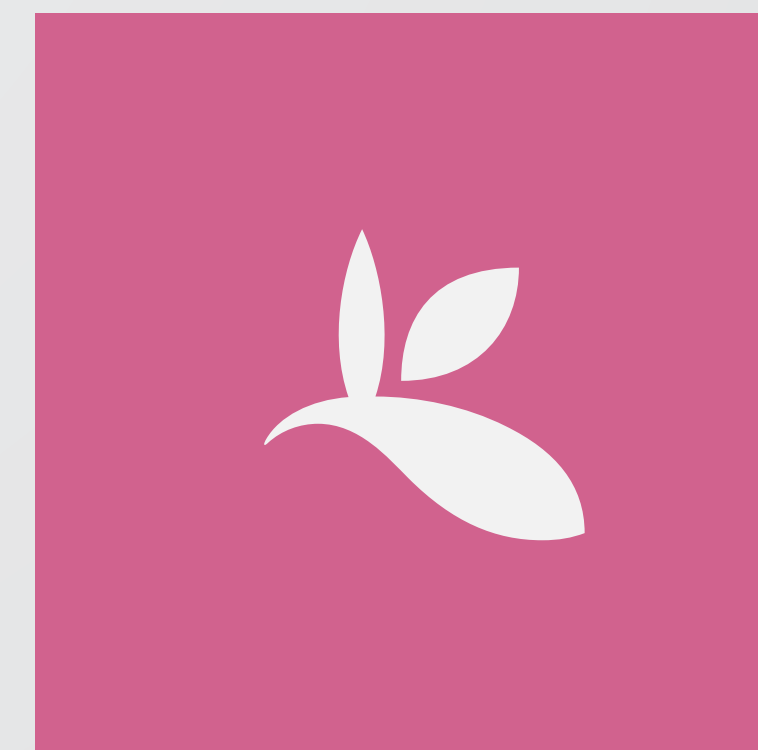
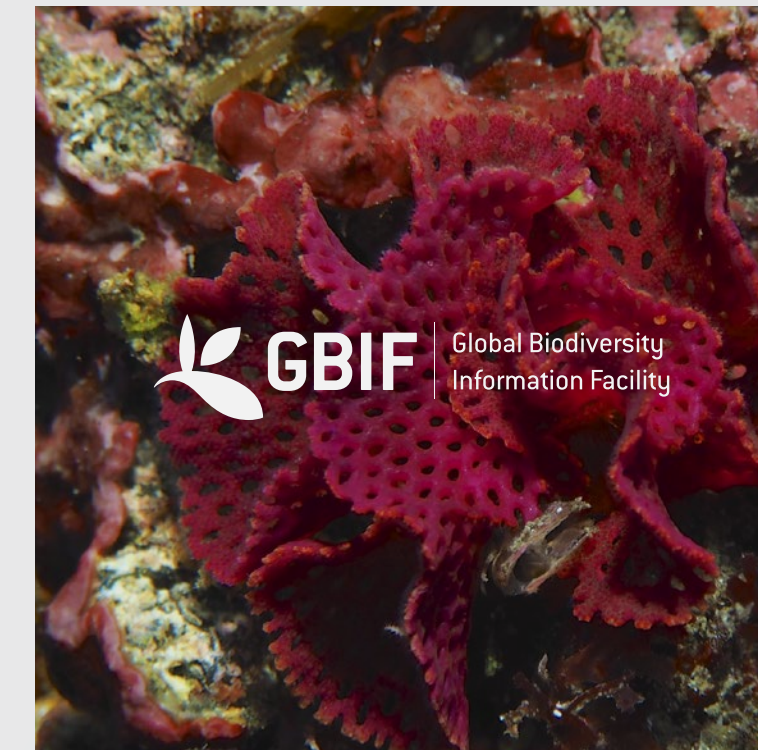




| Do this

Whenever the GBIF logo is used online, it should have an active link to <https://www.gbif.org>.

Please use the white transparent logo on color backgrounds within the GBIF color palette. When using the white logo over images, we suggest applying a ten percent black overlay over the image.



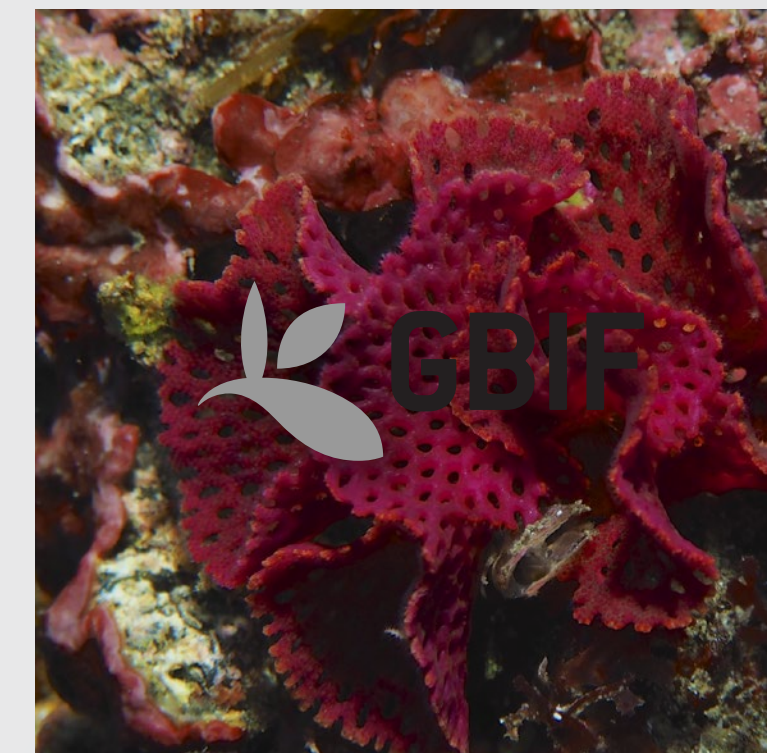


Don't do this

Please respect the proportions and integrity of the logo and its variations. Do not crop, modify the transparency or change the color of the logo and its variations.

Do not use drop shadows or effects, and don't outline or recreate the logo using other typefaces.

For more information on how to use the logo, please get in touch with comms@gbif.org.





More information

| gbif.org/logos