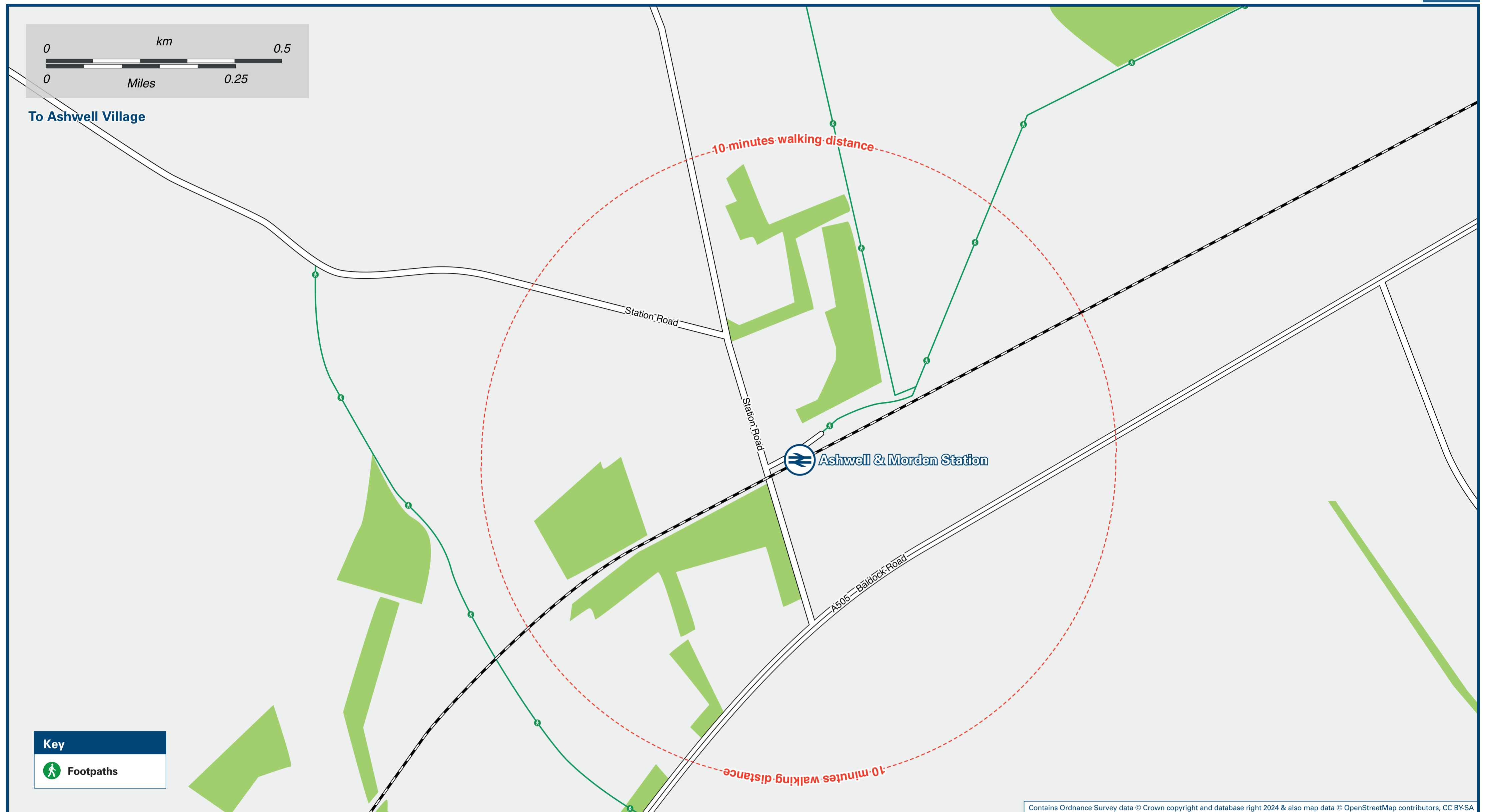




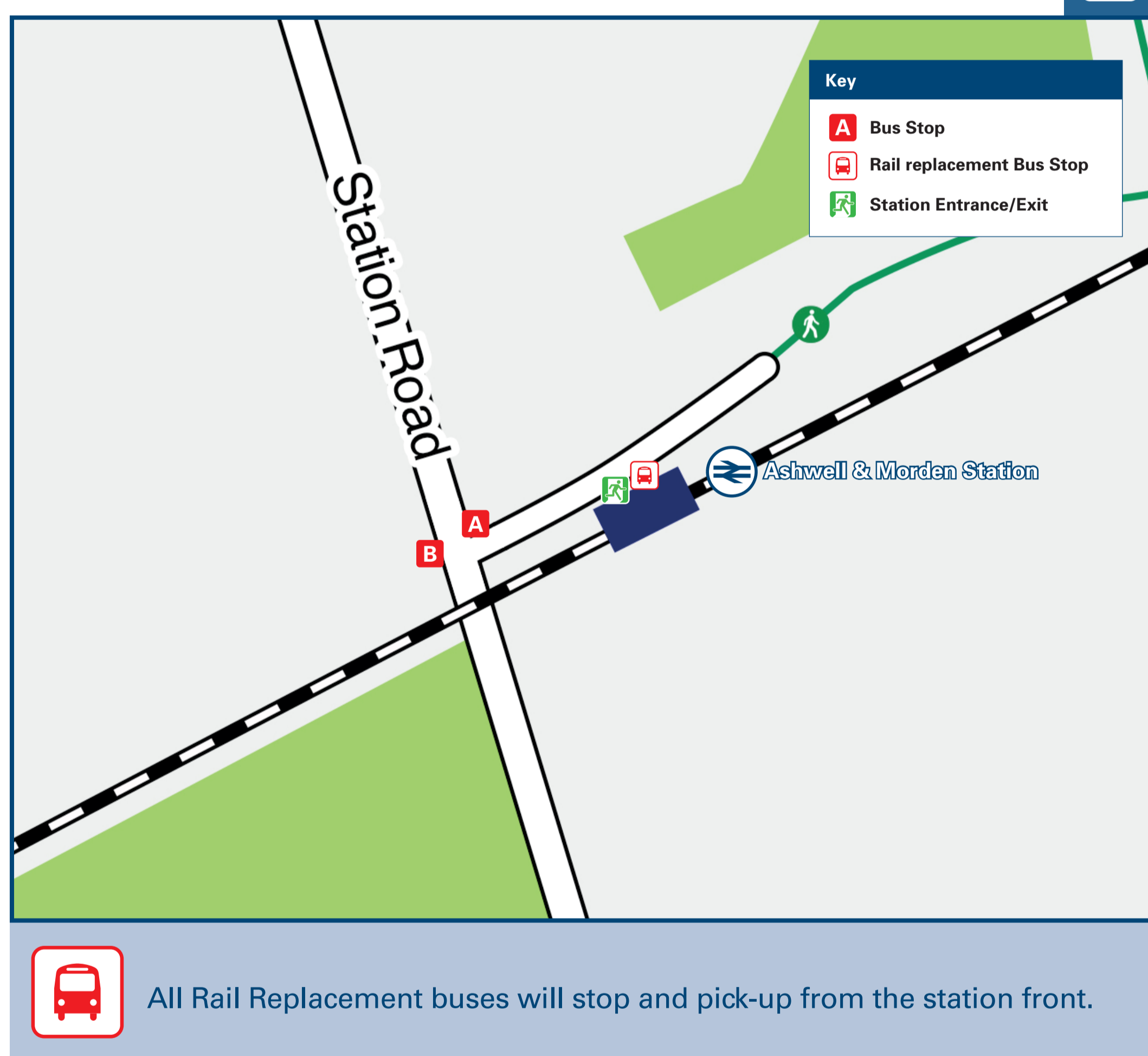
Ashwell & Morden Station

Onward Travel Information

Local area map



Buses



Main destinations by bus

(Data correct at May 2024)

| DESTINATION | BUS ROUTES | BUS STOP |
|--------------------------------------|--|----------|
| Ashwell Village | 90, 91 | B |
| Baldock | 90, 91 | B |
| Bygrave | 90 | B |
| Clothall Common | 90, 91 | B |
| Guilden Morden | Taxi from this station, or bus connection from Royston | |
| Letchworth Garden City | 90, 91 | B |
| Newnham | 91 | B |
| Radwell | 91 | B |
| Royston | 91 | A |
| Steeple Morden | Taxi from this station, or bus connection from Royston | |
| Sunnymead Orchard (Mobile Home Park) | 90, 91 | B |

Notes

Bus routes 90 and 91 operate a limited service Mondays to Saturdays only. No service on Sundays or Bank Holidays.

Direct trains operate to this destination from this station.

* Evening buses connect with trains from London and Cambridge, bus will wait up to 10 minutes for late running trains.

Taxis

Ashwell & Morden Station has no taxi rank or cab office. Advance booking is essential, please consider using the following local operators: (Inclusion of this number doesn't represent any endorsement of the taxi firm)

Village Taxis Baldock
01462 686 868

Eurocabs
01462 600 700

Royston Taxis
01763 250 811

Further information about all onward travel

| | | | | |
|--|--|--|---|--|
| Local Cycle Info scams.gov.uk <small>For more information about cycle routes.</small> | National Cycle Info sustrans.org.uk <small>Sustrans is the UK's leading sustainable transport charity.</small> | Bus Times <small>See timetable displays at bus stops.</small> www.traveline.info 0871 200 22 33 <small>calls cost 12p per minute plus your phone company's access charge</small> | NextBuses Find the bus times for your stop. <small>Search for a bus stop by entering a postcode, street & town or a stop name & town.</small> | PlusBus plusbus.info <small>A discount price 'bus pass' that you buy with your train ticket. It gives you unlimited bus travel around your chosen town, on participating buses.</small> |
|--|--|--|---|--|

National Rail Enquiries

| | | | | | |
|---|---|--|--|--|---|
| Online nationalrail.co.uk | NRE App Free National Rail Enquiries app for iOS and Android | Social Media facebook.com/nationalrailenq @nationalrailenq | Alert Me <small>You can sign up to Alert Me messages on the National Rail Enquiries website where you can receive train and platform notifications directly to your smart phone.</small> nationalrail.co.uk/alertme | Contact Centre 03457 48 49 50 <small>Calls cost no more than calls to geographic numbers (01 or 02) and may be recorded.</small> | PlusBike nationalrail.co.uk/plusbike <small>For more information.</small> |
|---|---|--|--|--|---|

Great Northern



National Rail
Britain's train companies working together

