

AZEK[®]
EXTERIORS
ENGINEERED TO LAST BEAUTIFULLY

TIMBERTECH[®] CLADDING
VINTAGE COLLECTION[®] | LANDMARK COLLECTION[®]



THE MOST AUTHENTIC LOOKING
HARDWOOD ALTERNATIVE

TimberTech

PVC CLADDING

BY **AZEK**



For exterior materials on high-end, luxury buildings, there are two non-negotiables: beauty and functionality. TimberTech Advanced PVC Cladding delivers on both, capitalizing on the strength of both the AZEK Exteriors and TimberTech brands.

THE BEAUTY OF WOOD

TimberTech has unmatched technology to create the most realistic, authentic hardwood appearance. Best known for high-end decking, TimberTech boards deliver the beauty, textures, and colors of real wood within an Advanced PVC material. Unlike wood, however, our proprietary materials are essentially maintenance free, incredibly durable, and backed for decades by industry-leading warranties.

BUILDING EXTERIORS EXPERTISE

AZEK Exteriors brings decades of experience with functional and decorative components of a building exterior, including premium siding and trim, detailed mouldings, and innovative engineered casings and water management solutions. TimberTech Cladding offers many choices in colors, widths, and installation profiles to fulfill most any design requirements.

You can be confident specifying TimberTech Cladding in your designs. And your clients will appreciate the ingenuity of an exterior solution built to endure beautifully.



COASTLINE 5.5"
SQUARE-SHOULDERED BOARD



RESIDENTIAL WARRANTIES

TimberTech Advanced PVC Cladding is backed by an industry-leading Lifetime Limited Warranty and 50-Year Fade & Stain Limited Warranty.



COMMERCIAL WARRANTIES

Bring the enduring beauty of TimberTech Cladding to your commercial builds with the confidence guaranteed from durable, low-maintenance materials and industry-best performance.



FIRE RESISTANCE

The TimberTech Vintage Collection® and Landmark Collection® have a Class A Flame Spread Rating (the best available). This means that in a fire, flames will spread slower across the material surface. The collections also have wildland urban interface (WUI) compliance for both open-joint and closed-joint installation.



AUTHENTIC WOOD LOOKS WITHOUT THE MAINTENANCE

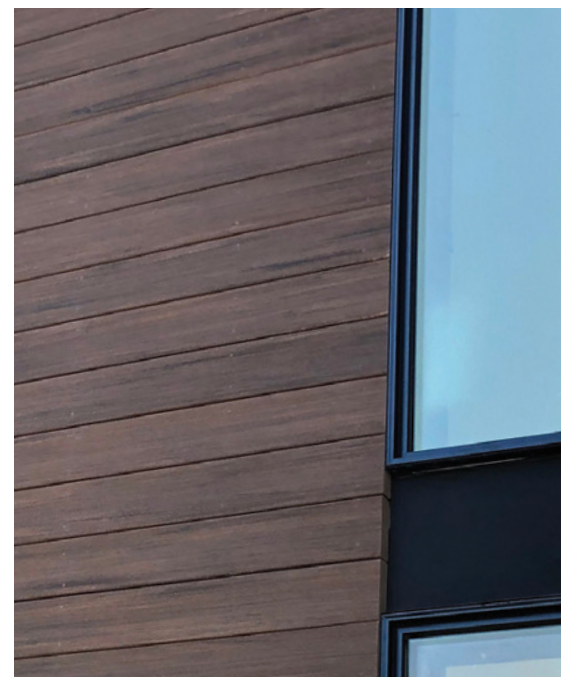
TimberTech Cladding from AZEK Exteriors' portfolio delivers the full visual experience of wood without the laborious, costly, and constant upkeep required with traditional lumber. TimberTech technology gives our Advanced PVC boards unrivaled aesthetics for a realistic wood look that lasts. Industry-leading warranties for both commercial and residential buildings inspire confidence in architects, builders, and building owners alike. Our curated collection empowers design flexibility with a variety of color choices and different board profiles and board widths.



ENGLISH WALNUT®
5.5" SQUARE-SHOULDERED BOARD

BOLD. ELEGANT. TIMELESS.

TimberTech's one-of-a-kind Advanced PVC material was designed to deliver the most realistic wood look available, with absolutely no staining or painting. Unlike traditional wood, TimberTech withstands the elements without compromising on its color, texture, or structural integrity. That translates to a beautiful exterior finish without frequent upkeep or maintenance.



TIMBERTECH CLADDING

Made completely of new and recycled polymer, TimberTech Advanced PVC boards stay impervious to moisture, mold, and mildew while also resisting the fading effects of UV rays. Backed by industry-leading warranties, TimberTech Cladding delivers unrivaled design potential and integrity.



STAINED WOOD EXPOSED FOR SEVEN YEARS

Exposure to the elements takes a toll on traditional wood cladding – even premium hardwoods like ipe will fade to a worn gray without regular and costly maintenance. Traditional woods can be treated with stains and coatings for protection, but will still experience splintering, fading, and dimensional changes.



READ OUR
CLADDING
CASE STUDIES

DARK HICKORY
5.5" SQUARE-SHOULDERED BOARD



TimberTech
 PVC CLADDING
 BY AZEK

MAHOGANY
 5.5" SQUARE-SHOULDERED BOARD

VINTAGE COLLECTION®

Exotic Hardwoods

The Vintage Collection is defined by natural-looking colors that mimic the look of ipe, teak, and other hardwoods. A subtle wire-brushed, low-gloss finish gives this elegant collection a truly authentic and sophisticated look. Unique board widths (narrow, standard, and wide) further open design possibilities.



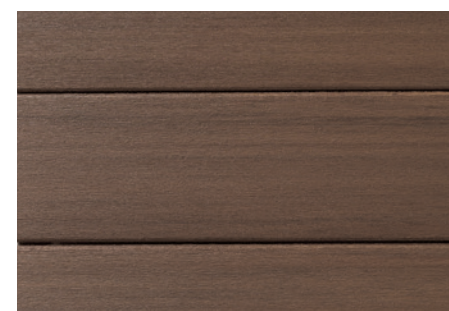
COASTLINE®



WEATHERED TEAK®



MAHOGANY



ENGLISH WALNUT®



DARK HICKORY



CYPRESS®

LANDMARK COLLECTION®

Crosscut Hardwoods

The Landmark Collection resembles popular hardwoods that have been crosscut for character-rich texture. Cascading colors define board-to-board color variation, ranging from dark, freshly stained walnut to the muted gray ambiance of weathered wood. Like all TimberTech Cladding, Landmark's distinctive grain and matte finish is fade resistant and needs no special maintenance.



CASTLE GATE™



AMERICAN WALNUT®



FRENCH WHITE OAK®



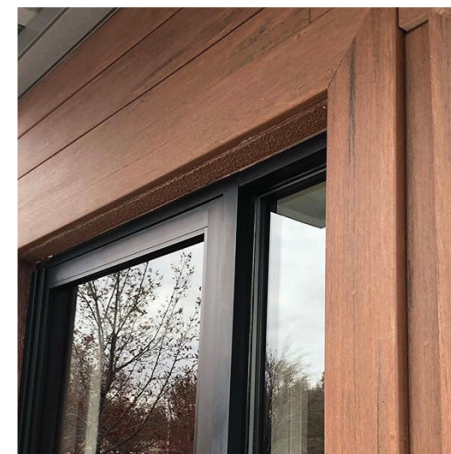
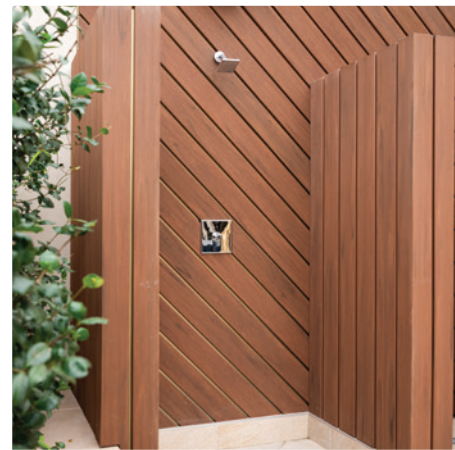
BOARDWALK®

DESIGN'S THE LIMIT

With an unmatched portfolio of diverse colors, woodgrain patterns, and board widths, the design potential with TimberTech Cladding is nearly limitless. Using moisture- and fade-resistant Advanced PVC technology, TimberTech Cladding boards protect the integrity of your exterior design vision for years to come. Build on the rich hues and textures of TimberTech Cladding to highlight an entryway, add design detail to a porch ceiling, or as one element among mixed building materials for a clean, dimensional finish.



ENGLISH WALNUT 5.5"
SQUARE SHOULDERED BOARD





TONGUE-AND-GROOVE

SQUARE-SHOULDERED

TONGUE-AND-GROOVE	WIDE WIDTH 5 1/2"		STANDARD WIDTH 3"	
	12'	16'	12'	16'
Standard Thickness 1"				
COASTLINE®	•	•	•	•
WEATHERED TEAK®	•	•	•	•
MAHOGANY	•	•	•	•
DARK HICKORY	•	•	•	•
ENGLISH WALNUT®	•	•	•	•
CYPRESS®	•	•	•	•

SQUARE-SHOULDER	NARROW WIDTH 3 1/2"	STANDARD WIDTH 5 1/2"	WIDE WIDTH 7 1/2"
	12' & 16'	16'	12' & 16'
VINTAGE Standard Thickness 1"			
COASTLINE®	•	•	•
WEATHERED TEAK®	•	•	•
MAHOGANY	•	•	•
DARK HICKORY	•	•	•
ENGLISH WALNUT	•	•	•
CYPRESS	•	•	•
LANDMARK Standard Thickness 1"	16'	16'	16'
FRENCH WHITE OAK®		•	
CASTLE GATE™		•	
AMERICAN WALNUT®		•	
BOARDWALK®		•	



CLOSED-JOINT, TONGUE-AND-GROOVE BOARD

CLOSED-JOINT CLADDING

Sometimes referred to as "closed-joint," tongue-and-groove boards interlock together with ease, creating a solid barrier with a neat, smoothly finished look without gaps.

Tongue-and-groove board sizes:

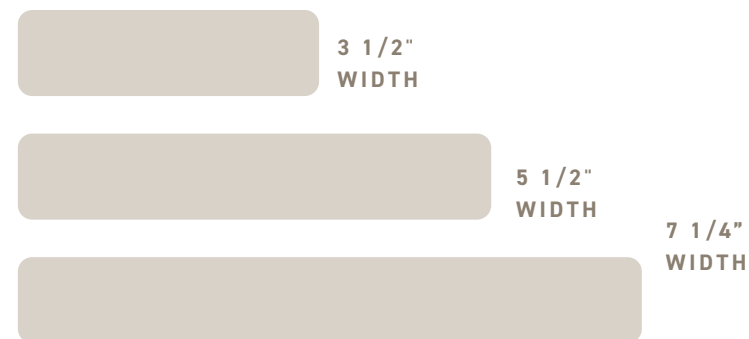


OPEN-JOINT, SQUARE-SHOULDERED BOARD

OPEN-JOINT CLADDING

The open joints between the cladding elements create a strong, linear design pattern while also functionally providing ventilation for proper air circulation.

Square-shouldered board sizes:



ORDER A FREE SAMPLE TODAY



MADE IN THE USA

The cladding applications depicted in this brochure are for display purposes only and not for the purpose of validating the suitability, warrantability, or safety of any particular installation or application of the product. Always consult AZEK's Installation Instructions as well as local building codes to ensure proper installation.

Depending on environmental conditions, TimberTech cladding colors may appear to change over time as part of the natural weathering process and consistent with applicable Fade & Stain Warranties.

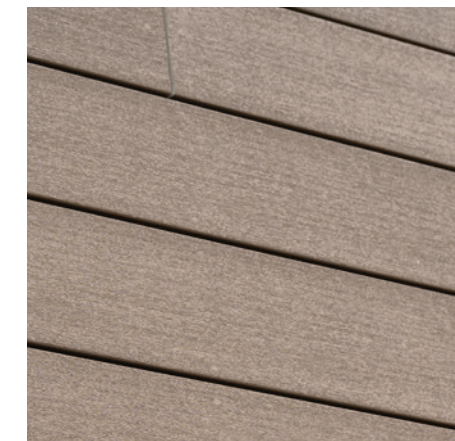


VINTAGE

LANDMARK

CORTEX HIDDEN FASTENERS

The Cortex® hidden fastening system keeps the focus on the warm, authentic wood aesthetics, and not on the installation method.



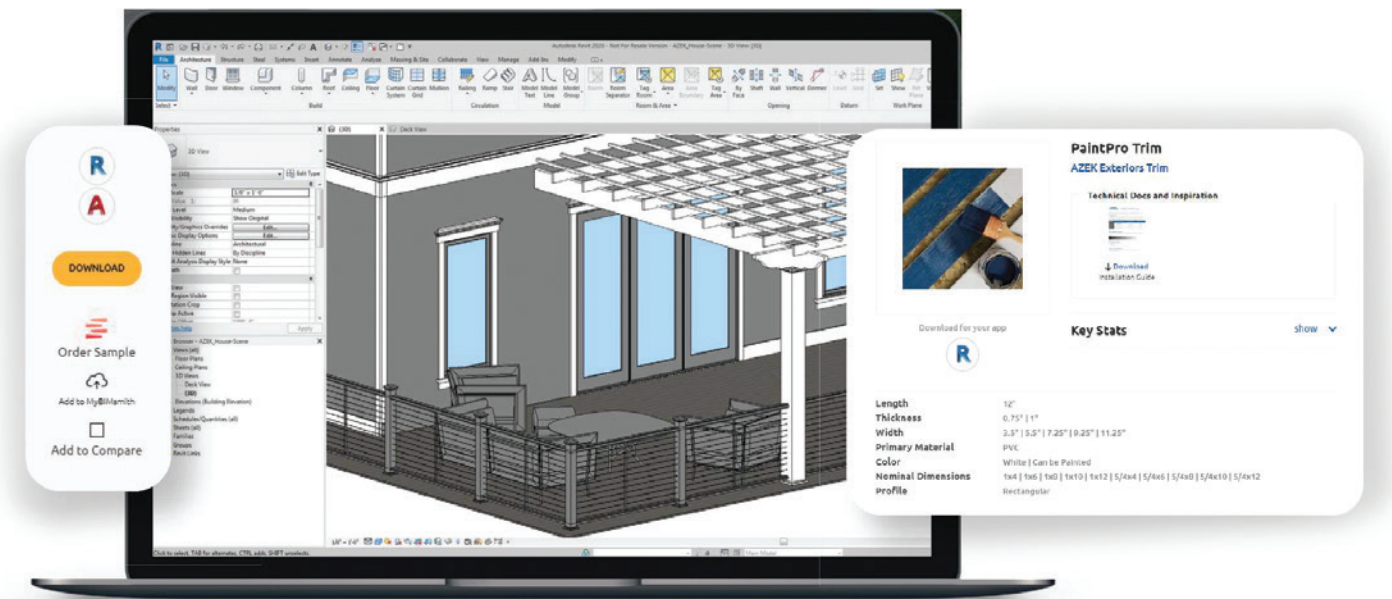


BUILDING A SUSTAINABLE FUTURE

The family of brands under The AZEK Company, including TimberTech and AZEK Exteriors, are trailblazers in recycling and using otherwise hard-to-recycle materials in our products. Since 2019, we have used over 2 billion pounds of waste and scrap in our production that otherwise could have gone into landfills or oceans and our goal is to use 1 billion pounds of waste and scrap annually. We are the largest vertically integrated PVC recycler in the USA.

TimberTech Advanced PVC Cladding boards are made from approximately 60% recycled materials and contain no organic wood — meaning no deforestation anywhere. We're not stopping there though. We're furthering our recycling capabilities every day, ensuring that TimberTech Cladding continues to deliver beauty, a long, low-maintenance lifespan, and environmentally conscious leadership.

GET TIMBERTECH AND AZEK EXTERIORS REVIT® FILES



AZEK Exteriors and TimberTech are pleased to provide Revit® content for our premium exterior building products.

Get started with AZEK BIM projects today: market.bimsmith.com/AZEK.

- Installation Guides
- Architectural Specification
- Order FREE Samples
- CAD Drawings
- Care and Maintenance
- BIMsmith Content

EARN AIA OR AAA CONTINUING EDUCATION CREDITS



To help architects meet continuing education requirements, AZEK sponsors a series of approved courses, which are available for free through online courses, in-person presentations, and as webinars.

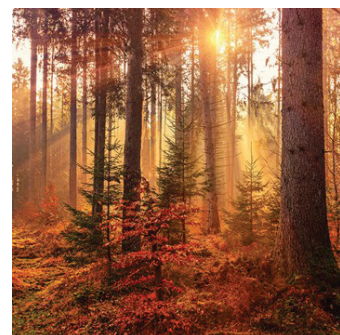


LEARN ABOUT OUR SUSTAINABILITY EFFORTS AND PROGRAM



TAKE ONLINE COURSES AND MORE FROM OUR ARCHITECT HUB

SUSTAINABLE CLADDING MATERIALS BY THE NUMBERS



3M TREES SAVED

Choosing TimberTech Cladding and Decking over wood has helped save the equivalent of more than 3 million trees in the past 20 years.



500M LBS DIVERTED

Across the company, we diverted roughly 500 million pounds of waste and scrap in 2022. We also reuse 99% of internal scrap.



97% WATER RECYCLED

Thanks to our closed-loop water filtration system, we recycle up to 97% of the water that our company uses each year.



OPEN-JOINT 3.5", 5.5" AND 7.25"
SQUARE-SHOULDERED BOARD

AZEK[™]
EXTERIORS

TimberTech[™]
BY AZEK₃