



CASE STUDY

TIMBERTECH® CLADDING
AZEK® TRIM & SHEET WITH PAINTPRO®
TECHNOLOGY

AZEK®
EXTERIORS

TimberTech®
BY AZEK®



Architect
Michael Ansel

Firm
OA Design+Build+Architecture

Project Location
Minneapolis, Minnesota

OPEN-JOINT CLADDING OPENS UP
NEW SUSTAINABLE DESIGNS

Minneapolis, Minnesota. Home to lakes, rivers and waterfalls; to minus-100-degree winters and scorching hot hundred-degree summers; and to a 1918 Spanish colonial home that Michael Ansel of OA Design+Build+Architecture was determined to rejuvenate. But, to bring the 102-year-old home into this century and keep it looking great for another 100 plus years was going to take a lot of work.





“We wanted to create a house with a modern aesthetic but also wanted it to feel warm and natural instead of cold and sterile, like some modern designs can feel.”

Michael Ansel, OA Design+Build+Architecture



The stucco was failing and needed to be completely rehashed or removed. The windows were failing and needed to be replaced. To top it all off, the three bedroom, one bathroom house was too small for modern living and a growing family. The home would need to double in size while maintaining an appropriate scale for the neighborhood. Thankfully, as a green builder and designer, Michael and his team were more than up to the task.

Michael envisioned a design that blended the home’s urban, tree-lined yards with a clean, contemporary style. “We wanted to create a house with a modern aesthetic but also wanted it to feel warm and natural instead of cold and sterile, like some modern designs can feel,” Michael said. Merging contemporary designs with natural textures, TimberTech open-joint cladding seemed like a great fit for the project. But Michael was skeptical.



“I had been previously opposed to open-joint cladding,” said Michael. “The problem was with the materials. With wood materials in open-jointed cladding, moisture sits on that leading edge and eventually takes that wood apart.” To fight rot, many architects choose to use exotic hardwoods such as Ipe for cladding. But those woods are often unsustainably harvested and still require constant maintenance.

Enter TimberTech Cladding by AZEK. TimberTech Cladding gave the home the contemporary-meets-natural look that Michael wanted, while being tough enough to withstand Minnesota’s brutal seasonal temperature swings. Offering the beauty of an exotic hardwood without the risk of decay and far less ongoing maintenance, TimberTech Cladding was perfect for this project.



Michael was impressed. “With TimberTech Cladding, water can sit on it for 100 years and it won’t fall apart,” he said.

But TimberTech Cladding’s durability means it’s a sustainable choice too. Traditionally, long lasting materials like brick or aluminum siding require a lot of energy to produce. But TimberTech Advanced PVC products are both long lasting and require substantially less embodied energy to make, making them an immediately sustainable option. And while a standard exterior might need to be repainted, repaired, or completely replaced after a few years, TimberTech Cladding is made to last. That means that the pollution that would come along with the transportation of new material, disposal of old material, and the VOCs (volatile organic compounds) that restaining and painting emit are eliminated. And if all that wasn’t enough, homeowners have saved more than 1 million trees since 2015 by selecting TimberTech Advanced PVC Cladding and TimberTech decking instead of wood. For a green builder, TimberTech Advanced PVC Cladding was an obvious choice.

Michael was able to add to the modern style by using AZEK PVC sheets with PaintPro® Technology as a complementary cladding solution. This gave the exterior walls a clean, smooth look—and pops of long-lasting color—without having to reapply stucco or resort to using fragile fiber cement. And because AZEK PVC Sheets with PaintPro Technology are lightweight, flexible, and won't crack, they were perfectly suited for the worksite.

With these materials in mind, Michael's design options really opened up. Using two different colors of TimberTech Cladding, Cypress and English Walnut, he could mimic natural wooded environments that blend a variety of tones from different tree types. Mingling lighter and darker colors of cladding allowed him to play with the surrounding light to make the home warm and inviting. With the design in place, all that was left to do was put it together.

The installation went off without a hitch. "I don't know if it gets much easier," said Michael. "The product cuts like butter, there are no checks, no twists, no cracking of the product." Because TimberTech Advanced PVC Cladding and AZEK Sheet with PaintPro are durable and flexible, Michael and his team didn't have to baby the product during install. And the hidden fastener system meant the team didn't have to worry about a pin-perfect screw line—allowing them to work quickly.





“We had incredibly positive responses from our guests on the Home Tour. They were all blown away by the look of the home.”

Michael Ansel



The results were immediate and breathtaking. “We had incredibly positive responses from our guests on the Home Tour,” said Michael. “They were all blown away by the look of the home. We hear a lot of people struggle to describe it other than it felt inviting, it was warm and not sterile, that they’d never seen anything like it, but they loved it; a very emotional response.”

He continued, “In our climate where you have plenty of water in all its forms, durability is crucial. With other panel products that are susceptible to moisture damage, you may see rot or corners start to blow apart. That’s just not the case with the PaintPro panels. And with the cladding, as a designer, I know this thing that I create is going to look just as good in year 10 as it did in year one, and probably just as good in year 50. That means a lot to me. TimberTech Open-Joint Cladding is the only logical material to use in an open-joint cladding system.”

Asked if he would recommend TimberTech Open-Joint Cladding and AZEK Sheet with PaintPro technology to other builders, designers, and architects, Michael had this to say: “Heck yeah!”



ARCHITECT: OA DESIGN+BUILD+ARCHITECTURE

Award-winning design and build firm in the Minneapolis/St. Paul metropolitan areas

Otogawa-Anschel is a small, design+build firm in the Minneapolis/St. Paul area devoted to creating beautiful, green buildings and urban living. For over 20 years, OA has focused on bringing creative and unique architectural solutions that create beautiful living environments that their clients can thrive in. Always committed to a high level of workmanship, OA has experience delivering beautiful aesthetics across architectural styles ranging from historic to contemporary design.

Website: OTOGAWA-ANSCHEL.COM



TONGUE-AND-GROOVE

SQUARE-SHOULDER

TIMBERTECH ADVANCED PVC CLADDING

Our one-of-a-kind cladding boards deliver the most natural looking hardwood alternative that maintains a beautiful, authentic look for years and years—that’s why we back them with industry-leading warranties. TimberTech Cladding is offered in a wide range of color options, multiple board widths and in two different profiles: tongue-and-groove (closed-joint) and square shoulder boards (open-joint).

Bring the beauty and warmth of the natural hardwood look to your next commercial, residential, or multifamily project.

- Premium, low-maintenance alternative to traditional and exotic wood
- CCRR-0266 available for TimberTech Advanced PVC Cladding
- Never need to paint, stain, or seal
- Resistant to mold, mildew, and moisture damage
- Will not split, splinter, rot, or crack
- Stain, scratch, and insect resistant
- Can be installed with Cortex® to nearly eliminate the appearance of fasteners



SIDING AND TRIM WITH PAINTPRO TECHNOLOGY

AZEK Trim and Sheet with PaintPro Technology was engineered to be the lowest maintenance paintable trim and siding in the market with superior paintability, fast dry times, and long-lasting paint adhesion. Experience improved paint coverage that bonds beautifully for a long-lasting finish. The combination of superior paint adhesion and moisture-resistant performance of cellular PVC delivers the ultimate low-maintenance painted finish. Together, sheet and trim can also be used for board and batten siding often seen in modern farmhouse design.

- Ready to paint. No sanding or primer needed.
- Moisture-resistant; will not rot, delaminate, decay, split, or splinter
- Insect-resistant; unappetizing to destructive pests
- No special tools required
- Engineered polymer is lightweight and durable
- Flexible, durable material helps prevent on-site breakage
- Uniform finish; no surface irregularities to work around



Reversible, Two-Sided Finish



AZEK & TIMBERTECH REVIT TOOLS AT BIMSMITH® MARKET



The AZEK Company and its leading residential brands, AZEK Exteriors and TimberTech, has been a leader in recycling and using hard-to-recycle materials in our products. As an industry-leading manufacturer of beautiful, sustainable building products, we divert roughly 500 million pounds of waste and scrap materials from landfills annually. Currently, our TimberTech Advanced PVC boards, used in both cladding and decking applications, are made up of approximately 50% recycled materials, but we're not stopping there—we're furthering our recycling capabilities every day.

Our cladding boards have no organic wood in cap or core, assuring no trees were cut down to make these products. TimberTech Cladding is engineered for a long, beautiful lifespan, which further reduces deforestation as well as time-consuming and costly maintenance.



AZEK & TIMBERTECH are pleased to provide Revit® content for our premium exterior building products. Get started with AZEK BIM projects today: market.bimsmith.com/AZEK.

- Installation Guides
- Architectural Specification
- Order FREE Samples
- CAD Drawings
- Care and Maintenance
- BIMsmith Content

EARN AIA OR AAA CONTINUING EDUCATION CREDITS



To help architects meet continuing education requirements, AZEK sponsors a series of approved courses, which are available for free through online courses, in-person presentations, and as webinars. To learn more visit: AZEKexteriors.com/aia/courses and timbertech.com/for-the-architects.

SUSTAINABLE CLADDING MATERIALS BY THE NUMBERS



WE WOOD NEVER
Homeowners choosing AZEK and TimberTech materials over wood have helped save more than 1 million trees since 2015.



WE GET SCRAPPY
Across the company, we diverted roughly 500 million pounds of waste from landfills in 2022. We also reuse 98% of internal scrap and are 97% landfill-free.



PROOF IS IN THE WATER
Thanks to our closed-loop water filtration system, we recycle up to 96% of the water that our company uses each year.



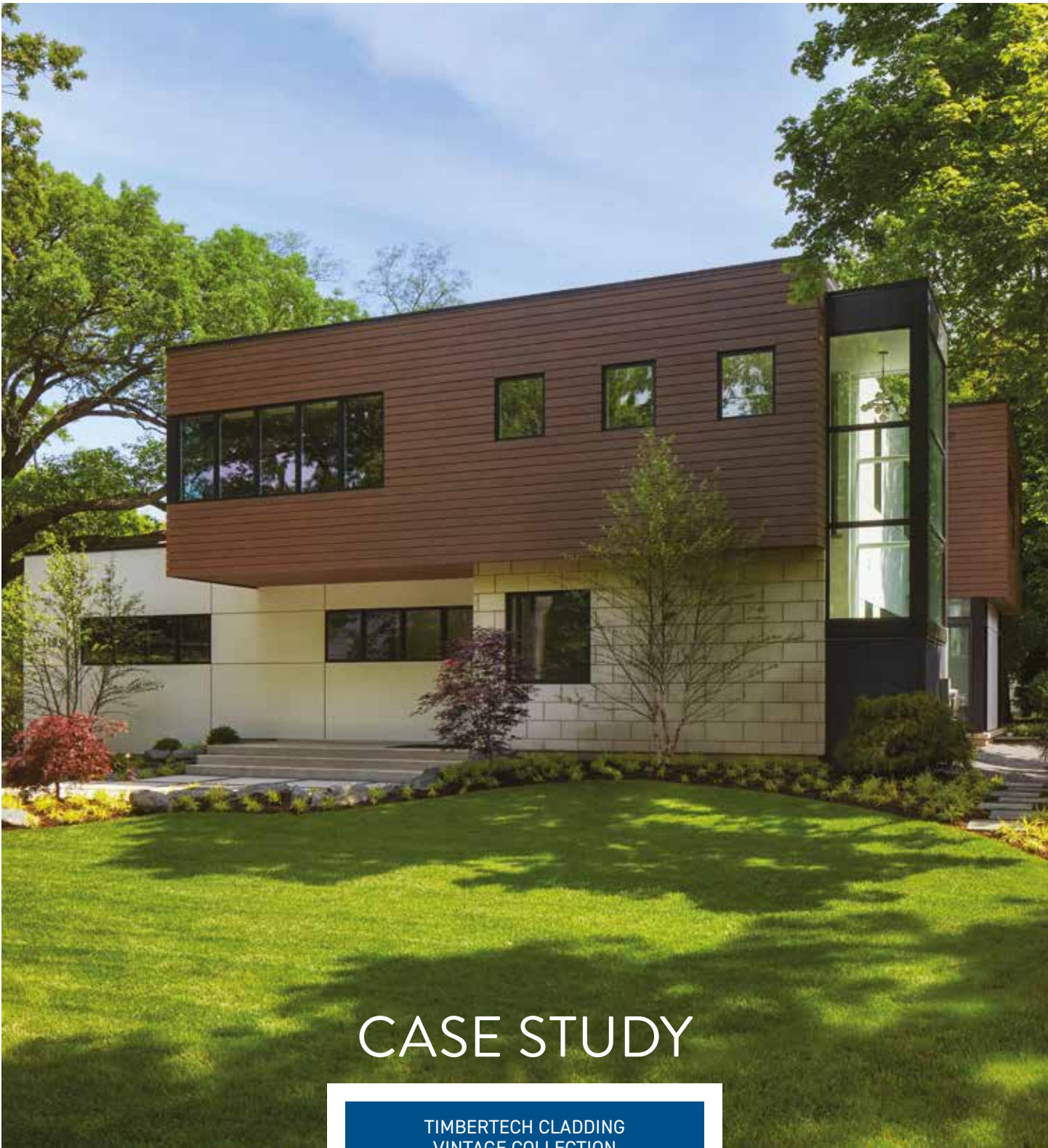
LEARN ABOUT OUR SUSTAINABILITY EFFORTS AND PROGRAM



TAKE ONLINE COURSES AND EARN AIA CREDITS







CASE STUDY

TIMBERTECH CLADDING
VINTAGE COLLECTION
ENGLISH WALNUT

AZEK[®]
EXTERIORS

TimberTech[®]
BY AZEK[®]



Architect
Becker Architects

Builder
JAR Corp

Project Location
Highland Park, Illinois

TRADITIONAL NEIGHBORHOOD
WELCOMES MODERN HOME
WITH TIMBERTECH CLADDING
FROM AZEK EXTERIORS.

Highland Park is a well-established and prestigious suburb on the North Shore of Chicago. Most of the homes are traditional in design with classic Georgian, Revival, and Prairie architecture. A young family leaving a contemporary condo in the city decided to build a new home in Highland Park but wanted to bring a modern aesthetic to the project while still being good neighbors.





“Real wood doesn’t have the uniformity of finish we needed. Plus, it wouldn’t look good over time with fading and warping.”

Jonathan Rubenstein, JAR Corporation



Richard Becker, AIA of local Becker Architects, was hired. “After meeting with the homeowners and reviewing images of design details they liked, we worked with them to create something fresh and contemporary. It was also important this infill design be contextual in massing and not disruptive to the feel of the neighborhood.”

The client initially approached Becker and builder Jonathan Rubenstein of JAR Corp with the tropical style inspiration of Ipe wood. The natural materials were beautiful, but both architect and contractor knew it would cause budgeting and maintenance issues—especially in the harsh Midwestern weather.

“Real wood doesn’t have the uniformity of finish we needed,” Rubenstein said. “Plus, it wouldn’t look good over time with fading and warping. I’ve worked with TimberTech and AZEK polymer materials over several years and we brought



“Our client loved the natural look and warm feel of English Walnut from the TimberTech Vintage Collection.”

Richard Becker, AIA, Becker Architects

the homeowner some options that were as beautiful as they are durable. I trusted the quality of their products, and I knew they were easy to miter and install. I was also confident that AZEK’s sales team would support it with technical help and great warranties.”

The AZEK sales team gave Becker and Rubenstein several samples to show their client. They also provided technical information and backup to set realistic expectations to avoid any issues during construction and beyond. The last things a design/build team wants are surprises.

“Our client loved the natural look and warm feel of the English Walnut from the Vintage Collection. It was rich and natural with a consistent quality of color for an exterior that looked smooth and elegant,” said Becker.

“We used Cortex® fasteners for the project to give the cladding on the home a seamless finish with simple, sophisticated lines,” said Rubenstein. “The homeowners were ecstatic and their neighbors were excited to see a new yet reserved look on the street that provided some welcomed variety.”

Contemporary and modern architecture is a growing market for home builders across the country. Sustainable solutions from AZEK Exteriors and TimberTech give designers, builders, and homeowners the creative freedom and low-maintenance quality they deserve to make the most of a fresh, new look.

Learn more about the potential of engineered polymer exteriors from an AZEK representative today, or visit azekexteriors.com/products/cladding.



ARCHITECT: BECKER ARCHITECTS

Full-service, award-winning Chicago architects designing new construction, rehabs, additions, and tenant build-outs.

Becker Architects began in New York City in 1982, designing corporate build-outs, medical offices, and residential renovations of apartments and townhouses, primarily in Manhattan. Since their relocation to the Chicago area in 1989, Becker Architects have designed hundreds of projects, from new construction to rehabilitation and additions, including residential, auto dealerships, and commercial.

beckerarchitects.com

BUILDER: JAR CORP

Premier remodeling, decorating, and home renovation firm serving the City of Chicago and North Suburbs for the past 19 years.

JAR Corp, Chicago’s premier remodeling and decorating firm, improves all facets of the home through complete renovations, new construction, interior and exterior painting, custom finishes, and maintenance services. JAR’s services extend beyond traditional single task companies, resulting in green construction, eco-friendly remodelling, and environmentally sustainable painting.

jarcorp.net



RESIDENTIAL WARRANTIES

Developed from AZEK Exteriors' decades of industry experience and dedicated commitment to innovative materials science, TimberTech Cladding is backed by industry-leading warranties for unrivaled performance.



COMMERCIAL WARRANTIES

Bring the enduring beauty of TimberTech Cladding to your commercial builds with the confidence guaranteed from durable materials.



CLASS A RATED FLAME SPREAD INDEX

The TimberTech Vintage Collection® ranked Class A (the highest ranking) and are the most likely to minimize the spread of an active flame.



COLOR + SIZE = UNPARALLELED DESIGN OPPORTUNITY

From unique color mixes to one-of-a-kind woodgrain patterns, there are a range of board options and widths for any style. Once installed, homeowners can rest assured that their home will look beautiful for decades to come.



TRADITIONAL

Standard 5.5" board is a traditional look that goes with any style home. Choosing a uniform size and palette offers a classic facade.



MULTI-WIDTH

Combining board widths creates the opportunity for new patterns on the home's exterior. Open joint includes 3.5", 5.5", and 7.25" widths, while the closed joint is offered in 3.125" and 5.5".



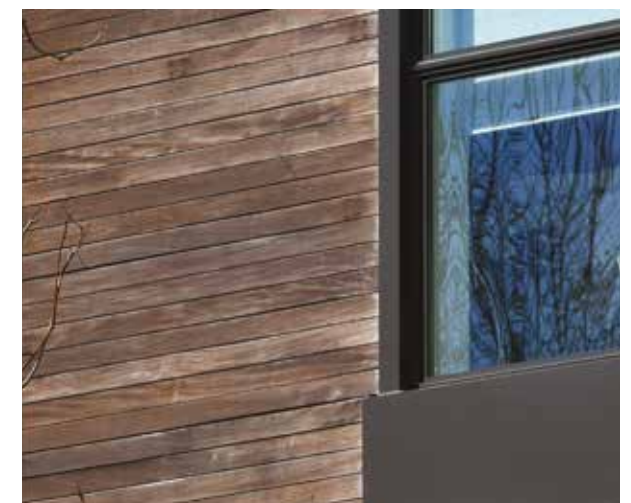
MIX AND MATCH

For a bold look, mix and match colors and widths. For best results work with the Vintage or Harvest collection, but not both.



TIMBERTECH CLADDING

Made completely of synthetic material and capped with Alloy Armour Technology, TimberTech Cladding planks maintain their beautiful finish with a long-term, low-maintenance performance. Backed by an industry-leading 50-Year Fade & Stain Limited Warranty, you can achieve unrivaled design and integrity with TimberTech Cladding.



STAINED WOOD EXPOSED FOR SEVEN YEARS

Constant exposure to the elements takes a toll on natural wood cladding. Even premium hardwoods like Ipe will fade to a worn gray color without maintenance. Organic woods can be treated with stains and coatings for additional protection, but still lead to splintering, fading, and dimensional changes.

AZEK & TIMBERTECH REVIT TOOLS AT BIMSMITH® MARKET



For years, The AZEK Company and its leading residential brands, AZEK Exteriors and TimberTech, has been a leader in recycling and using hard-to-recycle materials in our products. As an industry-leading manufacturer of beautiful, sustainable building products, we divert roughly 500 million pounds of waste and scrap materials from landfills annually. Currently, our advanced PVC boards, used in both cladding and decking applications, are made of approximately 50% recycled materials, but we're not stopping there—we're furthering our recycling capabilities every day.

Our cladding boards have no organic wood in the cap or core, assuring no trees were cut down to make these products. TimberTech Cladding is engineered for a long, beautiful lifespan, which further reduces deforestation as well as time-consuming and costly maintenance.



AZEK Exteriors and TimberTech is pleased to provide Revit® content for our premium exterior building products. Get started with AZEK BIM projects today: market.bimsmith.com/AZEK.

- Installation Guides
- Architectural Specification
- Order FREE Samples
- CAD Drawings
- Care and Maintenance
- BIMsmith Content

EARN AIA OR AAA CONTINUING EDUCATION CREDITS



To help architects meet continuing education requirements, AZEK sponsors a series of approved courses, which are available for free through online courses, in-person presentations, and as webinars. To learn more visit: AZEKexteriors.com/aia/courses



LEARN ABOUT OUR SUSTAINABILITY EFFORTS AND PROGRAM



TAKE ONLINE COURSES AND EARN AIA CREDITS



SUSTAINABLE CLADDING MATERIALS BY THE NUMBERS



WE WOOD NEVER
Homeowners choosing AZEK and TimberTech materials over wood have helped save more than 1 million trees since 2015.



WE GET SCRAPPY
Across the company, we diverted roughly 500 million pounds of waste from landfills in 2022. We also reuse 98% of internal scrap and are 97% landfill-free.



PROOF IS IN THE WATER
Thanks to our closed-loop water filtration system, we recycle up to 96% of the water that our company uses each year.

