

CASE STUDY

TIMBERTECH CLADDING
VINTAGE COLLECTION
ENGLISH WALNUT

AZEK[®]
EXTERIORS

TimberTech[®]
BY AZEK[®]



Architect
Becker Architects

Builder
JAR Corp

Project Location
Highland Park, Illinois

TRADITIONAL NEIGHBORHOOD
WELCOMES MODERN HOME
WITH TIMBERTECH CLADDING
FROM AZEK EXTERIORS.

Highland Park is a well-established and prestigious suburb on the North Shore of Chicago. Most of the homes are traditional in design with classic Georgian, Revival and Prairie architecture. A young family leaving a contemporary condo in the city decided to build a new home in Highland Park but wanted to bring a modern aesthetic to the project while still being good neighbors.





“Real wood doesn’t have the uniformity of finish we needed. Plus, it wouldn’t look good over time with fading and warping.”

Jonathan Rubenstein, JAR Corporation



Richard Becker, AIA of local Becker Architects was hired, “After meeting with the homeowners and reviewing images of design details they liked, we worked with them to create something fresh and contemporary. It was also important this infill design be contextual in massing and not disruptive to the feel of the neighborhood.”

The client initially approached Becker and builder, Jonathan Rubenstein of JAR Corp, with the tropical style inspiration of Ipe wood. The natural materials were beautiful, but both architect and contractor knew it would cause budgeting and maintenance issues—especially in the harsh Midwestern weather.

“Real wood doesn’t have the uniformity of finish we needed,” Rubenstein said. “Plus, it wouldn’t look good over time with fading and warping. I’ve worked with TimberTech AZEK capped polymer PVC materials over several years and we brought



“Our client loved the natural look and warm feel of English Walnut from the TimberTech Vintage Collection”

Richard Becker AIA, Becker Architects

the homeowner some options that were as beautiful as they are durable. I trusted the quality of their products, and I knew they were easy to miter and install. I was also confident that AZEK’s sales team would support it with technical help and great warranties.”

The AZEK sales team gave Becker and Rubenstein several samples to show their client. They also provided technical information and back-up to set realistic expectations to avoid any issues during construction and beyond. The last things a design/build team wants are surprises.

“Our client loved the natural look and warm feel of the English Walnut from the Vintage Collection. It was rich and natural with a consistent quality of color for an exterior that looked smooth and elegant,” said Becker.

“We used Cortex® fasteners for the project to give the cladding on the home a seamless finish with simple, sophisticated lines,” said Rubenstein. “The homeowners were ecstatic and their neighbors were excited to see a new, yet reserved look on the street that provided some welcome variety.”

Contemporary and modern architecture is a growing market for home builders across the country. Sustainable solutions from AZEK Exteriors and TimberTech give designers, builders, and homeowners the creative freedom and low-maintenance quality they deserve to make the most of a fresh, new look.

Learn more about the potential of capped polymer exteriors from an AZEK representative today, or visit azekexteriors.com/products/cladding.



ARCHITECT: BECKER ARCHITECTS

Full-service award winning Chicago architects designing new construction, rehabs, additions, and tenant build-outs.

Becker Architects began in New York City in 1982, designing corporate build-outs, medical offices, and residential renovations of apartments and townhouses, primarily in Manhattan. Since the relocation to the Chicago area in 1989, Becker Architects have designed hundreds of projects, from new construction to rehabilitation and additions including residential, auto dealerships, commercial.

beckerarchitects.com

BUILDER: JAR CORP

Premier remodelling, decorating and home renovation firm serving the City of Chicago and North Suburbs for the past 19 years.

JAR Corp, Chicago’s premier remodelling and decorating firm, improves all facets of the home through complete renovations, new construction, interior and exterior painting, custom finishes, and maintenance services. JAR’s services extend beyond traditional single task companies resulting in green construction, eco-friendly remodelling, and environmentally sustainable painting.

jarcorp.net



RESIDENTIAL WARRANTIES

Developed from AZEK Exteriors' decades of industry experience and dedicated commitment to innovative materials science, TimberTech cladding is backed by industry-leading warranties for unrivaled performance.



COMMERCIAL WARRANTIES

Bring the enduring beauty of TimberTech cladding to your commercial builds with the confidence guaranteed from durable materials.



CLASS A RATED FLAME SPREAD INDEX

The TimberTech Vintage Collection® ranked Class A (the highest ranking) and are the most likely to minimize the spread of an active flame.



COLOR + SIZE = UNPARALLELED DESIGN OPPORTUNITY

From unique color mixes to one-of-a-kind woodgrain patterns, there are a range of board options and widths for any style. Once installed, homeowners can rest assured that their home will look beautiful for decades to come.



TRADITIONAL

Standard 5.5" board is a traditional look that goes with any style home. Choosing a uniform size and palette offers a classic facade.



MULTI-WIDTH

Combining board widths creates the opportunity for new patterns on the home's exterior. Open joint includes 3.5", 5.5" and 7.25" widths, while the closed joint is offered in 3.125" and 5.5".



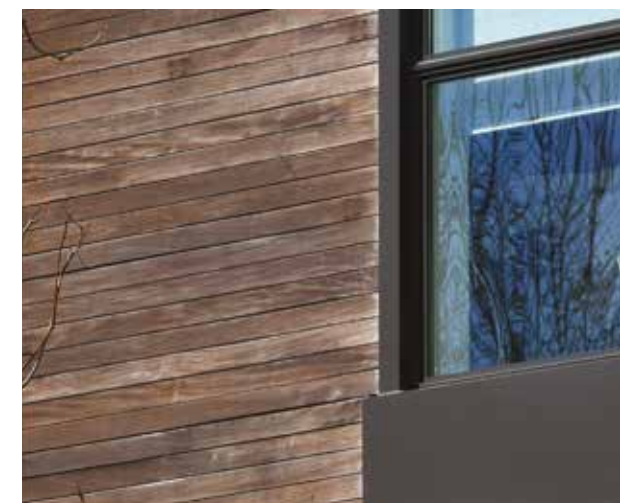
MIX AND MATCH

For a bold look, mix and match colors and widths. For best results work with the Vintage or Harvest collection, but not both.



TIMBERTECH CLADDING

Made completely of synthetic material and capped with Alloy Armour Technology, TimberTech Cladding planks maintain their beautiful finish with a long-term, low-maintenance performance. Backed by an industry-leading 50-Year Fade & Stain Limited Warranty, you can achieve unrivaled design and integrity with TimberTech Cladding.



STAINED WOOD EXPOSED FOR SEVEN YEARS

Constant exposure to the elements takes a toll on natural wood cladding. Even premium hardwoods like Ipe will fade to a worn gray color without maintenance. Organic woods can be treated with stains and coatings for additional protection, but still lead to splintering, fading and dimensional changes.

AZEK & TIMBERTECH REVIT TOOLS AT BIMSMITH® MARKET



For years, The AZEK Company and its leading residential brands, AZEK Exteriors and TimberTech, has been a leader in recycling and using hard-to-recycle materials in our products. As an industry-leading manufacturer of beautiful, sustainable building products, we divert roughly 500 million pounds of waste and scrap materials from landfills annually. Currently, our advanced PVC boards, used in both cladding and decking applications are made of approximately 50% recycled materials, but we're not stopping there - we're furthering our recycling capabilities every day.

Our cladding boards have no organic wood in the cap or core, assuring no trees were cut down to make these products. TimberTech Cladding is engineered for a long, beautiful lifespan, which further reduces deforestation as well as time-consuming and costly maintenance.



SUSTAINABLE CLADDING MATERIALS BY THE NUMBERS



WE WOOD NEVER
Homeowners choosing AZEK and TimberTech materials over wood have helped save more than 1 million trees since 2015.



WE GET SCRAPPY
Across the company, we diverted roughly 500 million pounds of waste from landfills in 2022. We also re-use 98% of internal scrap and are 97% landfill-free.



PROOF IS IN THE WATER
Thanks to our closed-loop water filtration system, we recycle up to 96% of the water that our company uses each year.



AZEK Exteriors and TimberTech is pleased to provide Revit content for our premium exterior building products. Get started with AZEK BIM projects today: market.bimsmith.com/AZEK.

- Installation Guides
- Architectural Specification
- Order FREE Samples
- CAD Drawings
- Care and Maintenance
- BIMsmith Content

EARN AIA OR AAA CONTINUING EDUCATION CREDITS



To help architects meet continuing education requirements, AZEK sponsors a series of approved courses which are available for free through online courses, in-person presentations, and as webinars. To learn more visit: AZEKexteriors.com/aia/courses



LEARN ABOUT OUR SUSTAINABILITY EFFORTS AND PROGRAM



TAKE ONLINE COURSES AND EARN AIA CREDITS



