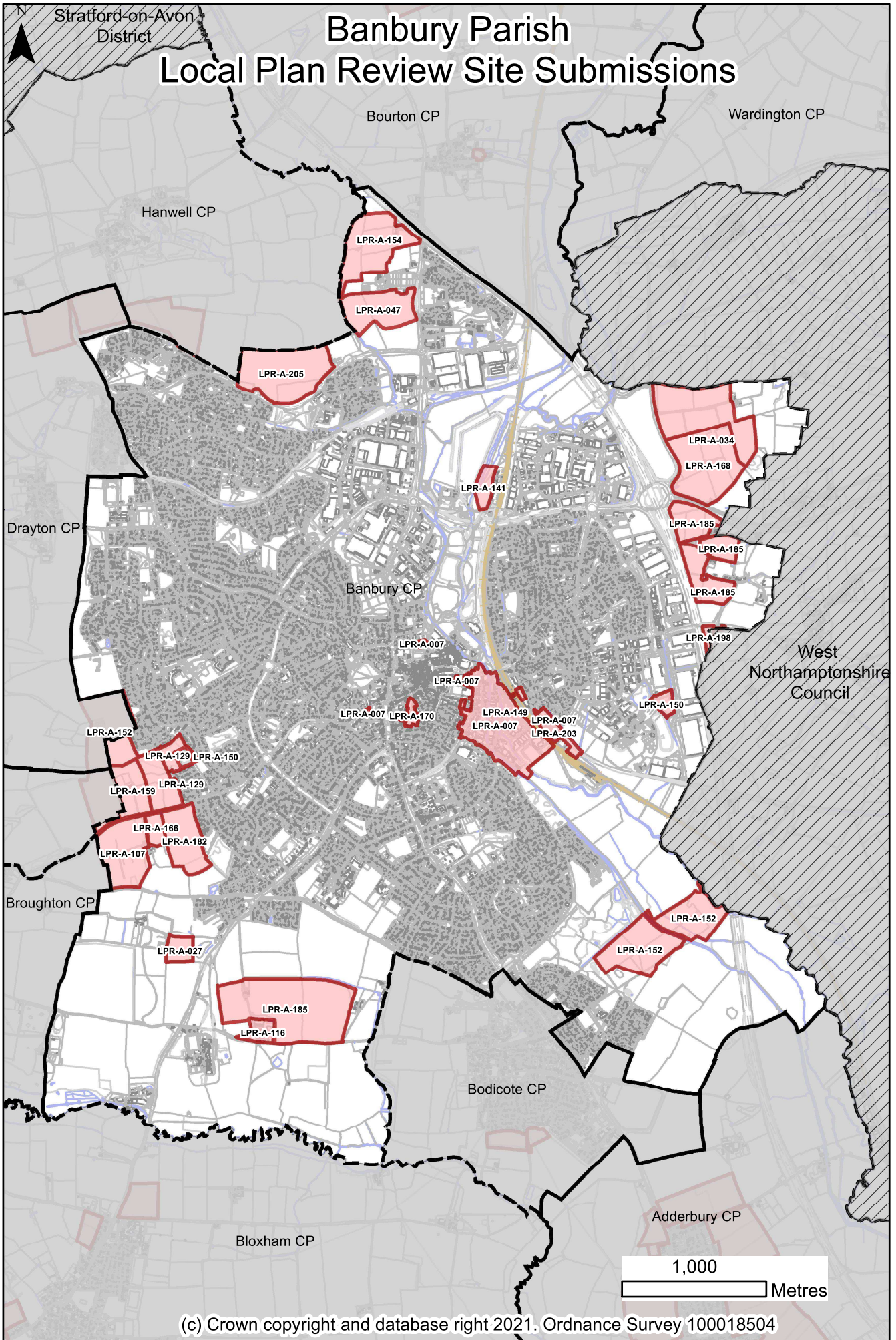


# Banbury Parish Local Plan Review Site Submissions



LPR-A-007	Canalside, Banbury	Banbury	25.6	Ken Howard	Travellers	Update
LPR-A-007	Poundland 1-6 Malthouse Walk, Banbury, OX16 5PW	Banbury	0.07	Ken Howard	Travellers	Update
LPR-A-007	PR Alcock and Sons Ltd, Castle Street, Banbury	Banbury	0.16	Ken Howard	Travellers	New
LPR-A-007	3 West Bar Street, Banbury	Banbury	0.14	Ken Howard	Travellers	New
LPR-A-027	Land off Bloxham Road, Banbury	Banbury	3	Keith Fenwick - Pegasus Group / Barwood Development Securities Ltd	Housing	Update
LPR-A-034	Land North East of Junction 11 M40, East of A361, Banbury	Banbury	42	Rhys Bradshaw - DLP Planning Ltd / Mr M Stroud, Mr J Stroud and Ms L Aries	Commercial	New
LPR-A-047	Land at Hardwick Farm, West of Southam Road, Banbury	Banbury	11.5	Rob Huntley - RHPC / Hargreaves Residential Developments Ltd	Housing	Update

LPR-A-107	Land at Saltway Farm, Broughton Road, Banbury	Banbury	13.72	Tom Birks - Brown & Co / Mr and Mrs Morris	Housing	New
LPR-A-116	Wykham Park Farm, Wykham Lane, Banbury	Banbury	2.9	Hywel Morse - Sworders / Mr J Colegrave	Housing	New
LPR-A-129	Land at Bretch Hill, Balmoral Avenue, Banbury	Banbury	2.5	Rebecca Bacon - Savills (UK) Ltd / Lone Star Land Ltd	Housing	New
LPR-A-129	Land North of Broughton Road, Banbury	Banbury	7.5	Rebecca Bacon - Savills / Carole Chard and Jill Woodfield	Housing	Update
LPR-A-141	Land at Waterworks Lane, Banbury	Banbury	3.2	Rhys Bradshaw - DLP Planning Ltd / Mr M Stroud	Commercial	New
LPR-A-149	Banbury Oil Depot, Tramway Road, Banbury	Banbury	0.87	Debbie Jones - Framptons / Motor Fuel Group Ltd	Housing	New
LPR-A-150	Former Lagoon at Banbury Sewage Treatment Works, Banbury	Banbury	1.94	Tasha Hurley - Savills (UK) Ltd / Thames Water Utilities Limited	Commercial	New
LPR-A-150	Land at Bretch Hill Reservoir, Bretch Hill, Banbury	Banbury	0.31	Tasha Hurley - Savills (UK) Ltd / Thames Water Utilities Limited	Housing	New
LPR-A-152	Land at Canal Lane, Banbury	Banbury	23.87	Jon Alsop - Savills (UK) Ltd / Trinity College, Oxford	Community / Leisure / Recreation	New
LPR-A-154	Hanwell Rise, Land at Hardwick Hill, Southam Road, Banbury	Banbury	15.8	James McAllister-Jones - Thakeham Homes Ltd	Housing	New
LPR-A-159	Milestone Farm, Broughton Road, Banbury	Banbury	7.7	Michael Robson - Cerda Planning Limited / Mr Howse, Ms Toemaes and Mr Jones	Housing	Update
LPR-A-166	Crouch Hill Farm, Broughton Road, Banbury	Banbury	2.57	Jim Rawlings - Roebuck Land & Planning King & Warr	Housing	New
LPR-A-168	Land to the East of the A361 and North of the A422, East of Junction 11 M40, Banbury	Banbury	19.97	Duncan Chadwick - David Lock Associates / Mr John Stroud, Trustee to the Beneficiaries	Commercial	New
LPR-A-170	Land between Calthorpe Street and Marlborough Road, Banbury	Banbury	1.4	Peter Frampton - Framptons / Skape Banbury LLP	Mixed	New
LPR-A-182	Land South of Broughton Road and West of Friswell Road, Banbury	Banbury	10.5	Nick Keeley - Gleeson Strategic Land	Housing	Update
LPR-A-185	Land at Wykham Park Farm, Wykham Lane, Banbury	Banbury	33	Alan Divall - Walsingham Planning / L&Q Estates	Housing	Update
LPR-A-185	Land South of the A422 at Nethercote, Banbury	Banbury	36.6	Alan Divall - Walsingham Planning / L&Q Estates	Commercial	New
LPR-A-203	S. Grundon Services Ltd and Cemex UK, Land off Higham Way, Merton Street, Banbury	Banbury	3.05	Mark Berry - JSA Architects Ltd / Grundon Waste Management Ltd & Cemex UK	Housing	Update
LPR-A-205	Land off Dukes Meadow Drive, Banbury	Banbury	19.74	Geoff Armstrong - Armstrong Rigg Planning / Manor Oak Homes and Mr & Mrs Donger	Mixed	Update
LPR-A-198	The Bowling Green, Overthorpe Road, Banbury	Banbury / West Northants	1	Julian Philcox - JP Planning Ltd / Mr N Wingfield	Commercial	New