



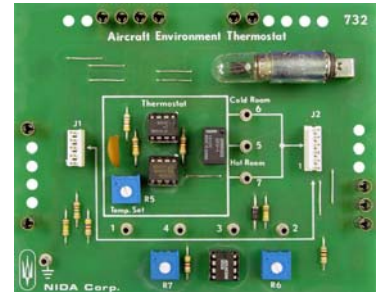
NIDA SPECIFICATIONS



AVIATION MAINTENANCE TECHNOLOGY EXPERIMENT CARD SET MODEL 1438A

General Description

The Aircraft Maintenance Technology experiment card set is designed for use with the Nida Model 130E training console. The program teaches electricity and electronics from an aircraft perspective. Traditional subjects such as DC, AC, Analog, and Digital are taught as a precursor to aircraft theory and practical hands-on troubleshooting experiments (Model 1438B). Experiments and troubleshooting tasks are performed on circuit cards that emulate aircraft circuits found in aircraft instruments, protection and control systems, ignition systems, and communications.



Note: Model 1438B Basic Aircraft Electronics is optional.

Card Specifications

- Compatible with computer assisted instruction or traditional hard copy text materials.
- Pre-assembled circuits require no assembly, jumper wires, or soldering.
- Exposed components provide maximum technician accessibility.
- Push-on, pull-off connections ensure self-cleaning of contacts.
- Powered automatically by computer instruction or manual push-button action.
- Nondestructive faults activated by computer instruction or manual push-button action.
- Generated signals are measurable with standard test equipment.

Experiment Cards

- DC Motor/Generator PC130-180
- Stepper Motor PC130-181
- Magnetism PC130-182
- Electro-Magnetism PC130-183
- Temperature Control PC130-189
- Temperature Display PC130-190
- 3-Phase Generator PC130-229
- 3-Phase Rectifier & Regulator PC130-230
- Pressure Sensor Barometer I PC130-241
- Pressure Sensor Barometer II PC130-242
- Loads PC130-290
- Aircraft Environmental Power Source PC130-731

- Aircraft Environmental Thermostat PC130-732
- Aircraft Heat Valve Control PC130-733
- Power Distribution System PC130-734
- AC to DC Generator PC130-735
- Split Bus Distribution System PC130-736
- Master Warning & Annunciators PC130-737
- Fire Warning System PC130-738
- Troubleshooting Logic PC130-739
- Power Generation PC130-740
- Power Distribution PC130-741

- Systems PC130-742
- Landing Gear I PC130-743
- Landing Gear II PC130-744
- Landing Gear III PC130-745
- Cockpit Wiring PC130-746
- Bulkhead Harness Connections PC130-747
- Aircraft Lighting PC130-748
- Incandescent Lamp PC130-749
- Interior Lights PC130-750
- Strobe Light PC130-751
- External Lighting PC130-752

1438A AMT-0107rev1-0507

NIDA CORPORATION

300 S John Rodes Boulevard Melbourne FL 32904
Phone (321) 727-2265 FAX (321) 727-2655

www.nida.com