

# BRIDPORT & WEST BAY

## OFFICIAL GUIDE & MAP

An historic market town surrounded by breathtakingly beautiful coast and countryside – recognised for its vibrant market, festivals and art scene, and renowned for its locally produced food and drink.



2023 – 2025

The distinctive Colmer's Hill is in the village of Symondsburry. It is a near-conical sandstone eminence topped by pine trees. The hill takes its name from the "Colmer Tenement". The family were tenants of the Dukes of Somerset and Earls of Ilchester in the 17th and 18th centuries and the Rev. John Colmer was the rector from 1805-06. During World War I Caledonian Pine trees were planted on the summit by Major W P Colfox MC. *Although it is not a public footpath, the Colfox family do allow access to it up a primitive path. Visit the café in the village for directions, you can park there too.*



Main front cover photograph by James Loveridge. James specialises in photography and aerial photography of the Jurassic Coast, as well as business marketing and graphic design. Visit the website [www.jamesloveridgephotography.co.uk](http://www.jamesloveridgephotography.co.uk) or find his work on Facebook and Instagram.

## Bridport Tourist Information Centre



- Friendly help & advice on the local area
- Information on attractions, forthcoming events & leisure activities
- Box office for Electric Palace & Arts Centre
- Leaflets, maps, guides & souvenirs

**Open All Year – Monday to Saturday**  
**April to October: 9am – 5pm**  
**November to March: 10am – 3pm**

*Whether you live in Bridport or are on holiday, Bridport TIC is the place to go to find out what is happening in the area!*

**Bucky Doo Square, South Street | 01308 424901**  
[bridport.tic@bridport-tc.gov.uk](mailto:bridport.tic@bridport-tc.gov.uk) | [www.bridportandwestbay.co.uk](http://www.bridportandwestbay.co.uk)



## Contents

Welcome to Bridport and West Bay	4
Bustling Bridport	6
A Great Place to Shop	11
Historic Street Market	14
Dorset's Eventful Town!	16
Wonderful West Bay	20
Surrounding Area	30
Where to Stay	37
Map	38
Bridport Street Index	40
Delicious Food & Drink	42
Arts & Culture	46
Music	49
Sports & Leisure	52
Young Bridport	57
Education	60
An Enterprising Place to do Business	62
Bridport Town Council	68
Other Services	70
Emergency & Health Services	72
Other Useful Information	74



If you are struggling to find what you are looking for in this Guide, then please visit **Bridport Tourist Information Centre**, Bucky Doo Square, South Street, Bridport DT6 3LF  
 Tel: **01308 424901** Email: [bridport.tic@bridport-tc.gov.uk](mailto:bridport.tic@bridport-tc.gov.uk)



This Guide has been produced with both residents and visitors in mind. It has been created and published by Kayenne Marketing with the authority of Bridport Town Council. It is compiled from information supplied by the businesses and organisations listed. Inclusion in this publication does not imply a recommendation and the publisher cannot accept any liability either expressed or implied resulting from such inclusion. The publishers of this Guide have made every effort to ensure that the content is correct before going to print, however they can accept no responsibility for the accuracy of information given. If you have comments about the guide, please let Bridport Town Council know at [enquiries@bridport-tc.gov.uk](mailto:enquiries@bridport-tc.gov.uk)



# Welcome to Bridport and West Bay

Hello Magazine (June 2023) chose Bridport and West Bay as one of the most beautiful seaside towns to visit in the UK.

As well as the wonderful coastline, the Wednesday and Saturday town markets and the vintage market were praised along with the independent shops and culinary choices.



Bridport – along with its harbour, West Bay – has a unique appeal. It is a vibrant mix of town, sea and country life, all coming together to make the Town a special place. If you are a local resident you will know that the Town has an outstanding community spirit. If you are a first-time visitor, you will be astounded by the wonderful warm welcome you receive. We are all extremely proud of our town, our community, where we live and where we work. We are delighted to be sharing it with you.

Through festivals, carnivals and events the town celebrates its rich heritage, its unique character and its ongoing commitment to supporting the community and local businesses. These occasions bring the town and surrounding area together and showcase to visitors what Bridport and West Bay is all about. This Guide has been put together in the same spirit. If you're a visitor, have a fantastic time, and if you're a local you might just discover something new. Enjoy!



Bridport named one of the best places to live in the UK by the Sunday Times 2022

In its profile, the newspaper wrote:

“Festivals, independent shops, beautiful landscapes and the rugged Jurassic Coast just a walk away make Bridport a dream combination of coast, culture and countryside.”

Mayor of Bridport 2020-2023, Cllr Ian Bark, said “It’s no surprise to find Bridport listed as one of the best places to live in the UK. Our wonderful town has everything you could possibly want and more, in fact if you can’t get it in Bridport you don’t need it!”.



# Bustling Bridport

Bridport is a friendly, vibrant market town recognised nationally for its ropemaking heritage, historic street market, thriving high street, its artistic culture, as well as the quality and variety of locally produced food.

## Fascinating History

Records of Bridport date back to the early Middle Ages when the King of Wessex, better known as Alfred the Great, created the 'Burgh of Brydian' in the late 9<sup>th</sup> Century. In Saxon times 'port' meant a place of trade not necessarily a seaport. Somewhere along the way the Burgh of Brydian' and the Saxon work 'port' came together to create Brydport.

## Ropemaking Heritage

The long association of Bridport with ropemaking began at the time of King John (1199-1216). In 1213 he demanded that Bridport work day and night to produce cables and ropes for his army and navy. The town's place in the landscape and the layout of its street and long gardens lay testament to its rope making heritage.

In the 18<sup>th</sup> century the industry was flourishing, and many beautifully lavish houses were built throughout the town – there are more than 1,000 listed buildings of historical architectural merit.

The town is famous for making the 'Bridport Dagger' the name given to the hangman's rope. The first football net, invented by John Brodie from Liverpool in 1889 was made in Bridport as were the goal nets used during England's 1966 World Cup victory. The Bridport name remains linked with nets from Wimbledon to Wembley! Bridport net makers are still at the forefront of design, production and innovation.

## Main Points of Interest in the Town

**Town Hall** was built in 1786. The architect was William Tyler RA, one of the original members of the Royal Academy. The clock and dome above it were added to the roof twenty years later. It is built from local bricks and Portland stone. The timber was imported from Riga through Bridport Harbour (West Bay). On permanent display in the Town Hall are several paintings by the artist and teacher Francis ("Fra") Newbery (1855 – 1946) depicting aspects of Bridport's rope and net heritage. The Town Hall is FREE to visit if not in use. Opening times are available from the Bridport Tourist Information Centre housed in the building. [www.bridportandwestbay.co.uk](http://www.bridportandwestbay.co.uk)



**Bridport Museum** 25 South Street, Bridport DT6 3NR, is housed in one of the Town's oldest buildings, although its origins remain a mystery! The fine 16<sup>th</sup> Century façade is all that remains of the original buildings. There was a fire in 1876 which destroyed the back. The building is Grade II listed. It is the place to go to unravel the town's fascinating history. Visit [www.bridportmuseum.co.uk](http://www.bridportmuseum.co.uk)

**Local History Centre** The Grove, Rax Lane DT6 3JL, houses the Museum's local history collection of documents and photographs. Research your family history, view Parish records and census returns, study over 10,000 historic images of the town and surrounding area. Admission is FREE. Volunteers or staff can assist you in your research. Visit [www.bridportmuseum.co.uk](http://www.bridportmuseum.co.uk) for opening times.

**Bridport Library** South Street DT6 3NY is open every day except Tuesday afternoon, all day Thursday and Sunday. 01308 422778. Visit [www.dorsetcouncil.gov.uk/libraries](http://www.dorsetcouncil.gov.uk/libraries) for opening times.

**Bridport Literary & Scientific Institute** A Grade II listed building in East Street constructed in the 1830s as a mechanics Institute to train young working men. In the 1860s the building became the Literary and Scientific Institute. The building served for many years as the Bridport School of Art. In 1952 it became the town's public library until it was relocated to new premises in 1997. For many years it remained empty until it was rescued and restored by the Bridport Local Area Development Trust in 2007. Opened as an economic hub with high-quality business and training accommodation by Prince Charles (now King Charles III) in May 2018, it is now a flexible commercial space. [www.lsibridport.co.uk](http://www.lsibridport.co.uk)

**The Chantry** (formerly called the Dungeness) a Grade II listed building in South Street. It dates back from the late 13<sup>th</sup> or early 14<sup>th</sup> century and is the oldest secular building in Bridport. The Chantry House is not open to the public.

**Palmers Brewery** (West Bay Road DT6 4JA) dates back to 1794 when the business was owned by Samuel Gundry. It is the only thatched brewery in England. The Palmers family took the premises over in 1896 and still run the business today. The working Water Wheel dates from 1879. Tours of the brewery can be booked through the Palmers Wine Store next door or the TIC (01308 424901). [www.palmersbrewery.com](http://www.palmersbrewery.com)







## Open Spaces

**Bucky Doo Square** is the focal point of the town and is a great place to sit to watch the world go by and soak up the atmosphere. In 1996 stonemason Karl Dixon carved a splendid octagonal seat in Portland and Purbeck stone and decorated it with scenes illustrating aspects of Bridport's life and history. On Wednesdays, Fridays and Saturdays there is often music and entertainment to enjoy.

**Bridport Community Orchard** (a community-led project) occupies a central town site of about an acre, just behind St Mary's Church in South Street. As well as fruit trees, the orchard includes community allotments, a meadow area that contains a wide variety of wildflowers and beehives, and a wildlife area with a pond. All are welcome and membership is FREE. [www.bridportcommunityorchard.org.uk](http://www.bridportcommunityorchard.org.uk)

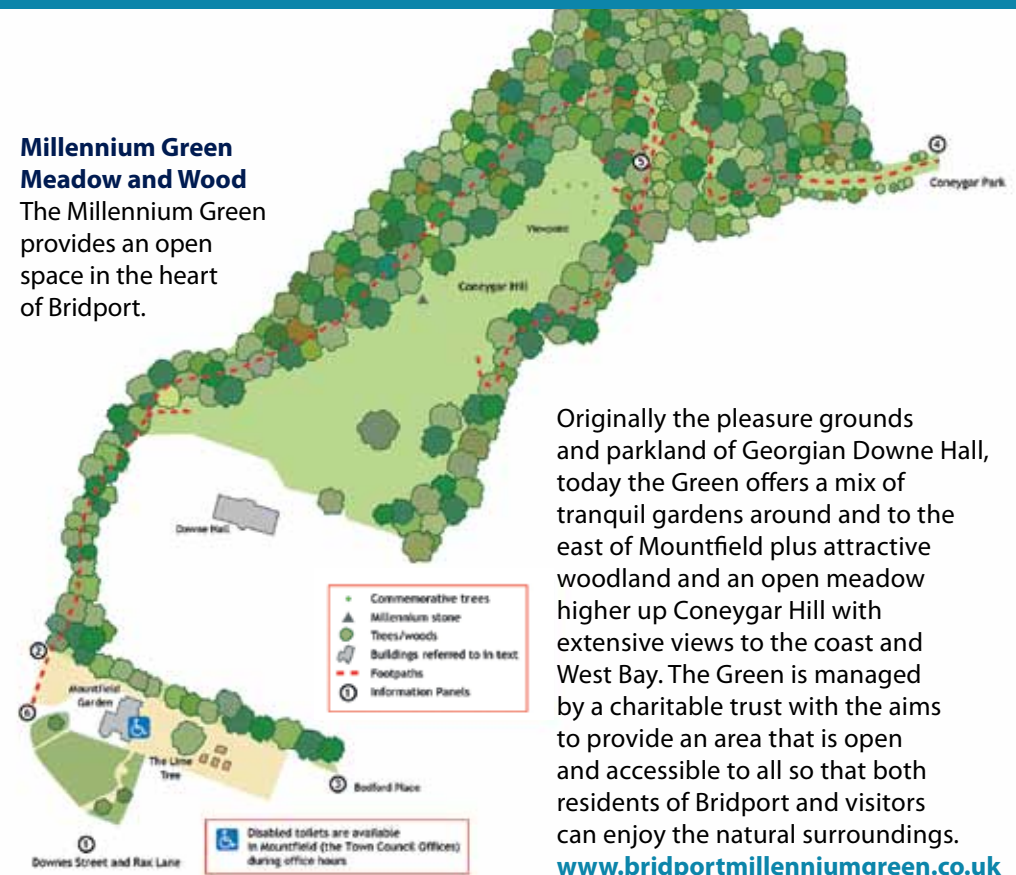
**Allington Hill** is a mixture of woodland, grassland and open space with stunning walks and views across Bridport at the top of the hill. All the land is open access for everyone and anyone. There are lots of route options which lead back to where you started. Popular with dog walkers, great for kids too. Owned by the Woodland Trust and managed by Allington Hillbillies (the Allington Hill, Cooper's Wood and Field Community Group). [www.allingtonhillbillies.org.uk](http://www.allingtonhillbillies.org.uk)

**Borough Gardens** DT6 3RS. This small garden is situated right in the centre of Bridport tucked away behind South Street, the Tanyard and Gundry Lane.

**Riverside Gardens** DT6 3HA are at the bottom of East Street next to the Bridge House Hotel. They provide riverside paths and green space enjoyed by walkers and their dogs as well as cyclists. Admire the Fish Eagle sculpture by Greta Berlin which is part of the Bridport Sculpture Trail. [www.bridportandwestbay.co.uk](http://www.bridportandwestbay.co.uk)

## Millennium Green Meadow and Wood

The Millennium Green provides an open space in the heart of Bridport.



**Bee Friendly Bridport** is a new Community Group established by the team at The Dorset Bee and the Symondsburry School Bee Club. The group aims to raise awareness of the importance of all pollinators and the risks to them of habitat loss. This includes the actions that individuals, groups and organisations can take to support pollinators, and how these actions can have a positive effect on the natural ecosystems and biodiversity within Bridport and its surrounding area. [www.beefriendlybridport.org](http://www.beefriendlybridport.org)





# THE MELPLASH AGRICULTURAL SOCIETY

PROMOTING & SUPPORTING LOCAL FARMERS & PRODUCERS

**Garden & Allotment Competition in June**

**HEDGELAYING & PLOUGHING MATCH in September**

**THE MELPLASH SHOW**  
Est. 1847  
A GREAT DAY'S ENTERTAINMENT FOR ALL THE FAMILY

**DISCOVER FARMING**  
Educating the Future Generations  
Scholarship Scheme available for students going on to further education  
Discover Farming Classroom at Washingpool Farm for primary and secondary schools

Held the Thursday before August Bank Holiday  
Celebrating the best of agriculture by the sea

For the latest information visit [www.melplashshow.co.uk](http://www.melplashshow.co.uk)

Facebook, Twitter, Instagram icons

BACK BRITISH FARMING logo

A great place to shop



## Gifts to Impress!

Our selection of jewellery and watches will help you find the perfect gift for loved ones

*Jewellery For Those Special Moments!*

**BATTENS JEWELLERS**  
Family Jewellers Since 1950

Battens Jewellers, 26 South Street, Bridport DT6 3NQ  
Tel: 01308 456910

Opening Times: Monday - Wednesday: 9am - 4.30pm  
Thursday: 9am - 1pm | Friday: 9am - 4.30pm | Saturday: 9am - 1pm

## Distinctive collections with traditional values...

**Barbour.**  
**VIYELLA**  
**OLYMP**  
**MEYER**

**Smith & Smith (Bridport) Ltd.**  
ESTABLISHED 1884

8 West Street, Bridport DT6 3QP  
Tel: (01308) 422172  
Email: [smithandsmithbridport@gmail.com](mailto:smithandsmithbridport@gmail.com)  
[www.smithandsmithonline.co.uk](http://www.smithandsmithonline.co.uk)

Bridport has a wonderful diverse range of small independent retailers – there really is not much that you cannot buy here – as well as an immensely popular twice weekly street market and monthly specialists and vintage markets.

The main shopping areas are in South, West and East Street where you will find not only the everyday essentials – post office, banks, chemists, greengrocers, butchers and bakers, but also a fantastic variety of independent shops that you just won't find on any other High Street making it the perfect place for shopping for gifts and special purchases. Many are family run, have been in the town for generations and are still flourishing: Snooks, a Hatter and Gentlemen's outfitters (Est. 1896); Battens Jewellers and clock repairer (Est. 1974) Steptoes, Shoe shop (Est. 1981); Smith & Smith, men's and ladies outfitters (Est. 1985); Lilliputs, Homeware department Store (Est. 1985); Music & Record Shop (Est. 1976); RJ Balson & Son, one of the family butchers (there are three in the town and one in Bradpole) was established in 1515 and is England's oldest family business.





# The Dorset Pedlar

Crystals, Tarot, Incense, Candles,  
Essencial Oils, Buddha, Dream Catchers,  
Clothing and more

54 South Street Bridport 01308 420171  
www.thedorsetpedlar.online



As well as the long established, the town boasts a whole range of up-and-coming independent retailers selling bespoke, home grown and handcrafted items including fashion, shoes, toys, books, fabric, DIY, fancy dress, baby wear, cycles and also food stuffs – greengrocers, health food, bakers and delicatessens.

There is also a good selection of independent shops to be found at Symondsbur Estate and in West Bay.

Local businesses throughout the town and surrounding area are working together to promote and support independent traders and shops. Look out for the logo and campaigns that are running.



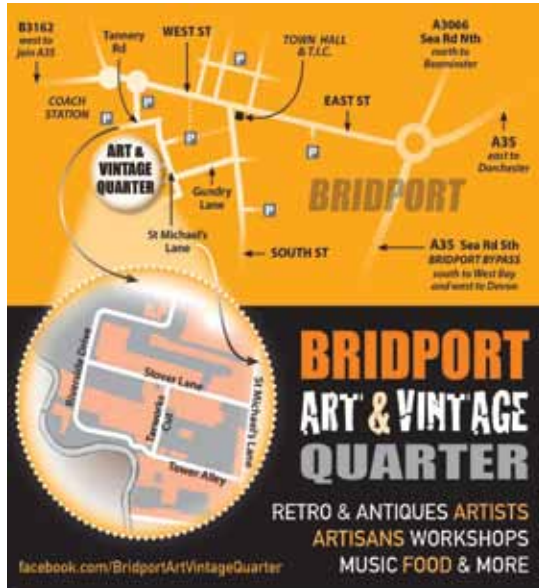
*"If every adult in Bridport spent just £5 a week with their local independent shops and businesses instead of online or at the big supermarkets or chain stores it would be worth £4.6 million going directly into our local economy."*

## Antique and Vintage Shopping

Bridport has become a destination for antiques and vintage shopping. There is a treasure trove of shops around the town selling everything from antiques, vintage revival, retro and vintage record, where you can pick up countless bargains. Many of them can be found in and around the Vintage Quarter of St Michael's Trading Estate.

Every Saturday in lower South Street as part of the Street Market, there is always a large selection of antique and bric-a-brac stalls to browse.

The town also has two independent auction houses who hold regular monthly auctions where you can buy all sorts of antiques, collectables, art, jewellery, furniture, etc.



## FIONA NEYLAN MILLINERY

Decorated, Customised, Up-cycled & Handmade Hats & Headwear for Every Day & Special Occasions.

Open Wed & Sat mostly, or by appointment.

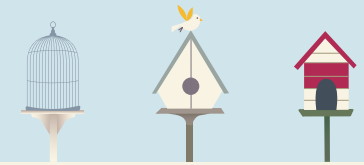
Studio 48, St Michael's Estate, Bridport, DT6 3RR  
07905 999437

Facebook: Fiona's Hat Studio  
Instagram: @fionaneylan

Google: Fiona Neylan Hat Studio



## ANIMAL HOUSE



## ANIMAL HOUSE

*Creature Comforts & Gifts*

for your pets, home & garden

8 SOUTH STREET, BRIDPORT • 424349

www.animalhousebridport.com



## Sunbird

I hand source all my fabrics, prints and textiles from my travels to Asia. Sunbird specialises in textiles, soft furnishings, blockprint and upcycled sari clothing, tribal textiles and accessories.

37 South Street, Bridport, DT6 3NY  
07986 423502

sunbirdtrading@yahoo.com  
Instagram: sunbirdbridport





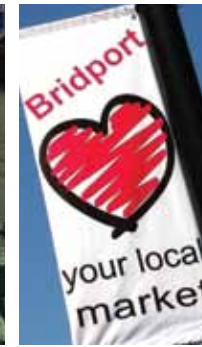
# Historic Street Market

Bridport comes alive every Wednesday and Saturday when the historic market comes to town along South, West and East Street, and more recently Downes Street.

The area has always been known for its market and trading. In 1253 Henry III granted a Charter and made the town a Royal Borough. Later confirmed by Elizabeth I and James I. At this time the market was outside the Bull Hotel in East Street. In 1593 the 'market house and scole house' were built in the middle of the junction of East, West and South Streets, designed to house butcher shops and the first purpose-built school room in Bridport. Its butchery function led to it being known locally as 'The Shambles' as butchers used to slaughter animals as well as butcher meat. Early maps illustrate ten covered meat market stalls. In 1515 local butcher John Balson was granted a lease for life of a shamble. His ancestors still run a butcher shop in the town and are acknowledged not only as the oldest family butcher but the oldest family business in the country.

The market has operated for hundreds of years on the three main streets which converge at the iconic Town Hall and is still flourishing today.

From 8am until late afternoon throughout the year, shoppers enjoy a diverse range of stalls selling local food and food to go, clothing and kitchen hardware, flowers and plants, pictures and paintings, books and IT goods and lots more. The busy Saturday market has circa 100 stalls including a large number of antique and bric-a-brac stalls in lower South Street.



## Other markets

### **Bridport Vintage Sunday Market**

This fashionable Vintage Market takes place during March to October on the last Sunday of the month from 10am to 4pm in the Arts and Vintage Quarter of St Michael's Trading Estate. Here you will find a wonderful selection of vintage and antique furniture, collectables, clothes and bric-a-brac. With its award-winning artists and all things vintage, St Michael's Trading Estate is always an exciting and interesting way to spend your time. [www.bridportantiques.co.uk/vintage-market](http://www.bridportantiques.co.uk/vintage-market)

### **Bridport Vinyl Record & CD Fair**

An essential day for collectors of rock, pop, folk, blues and jazz records and CDs. Held once a month during February, May, August and November at the United Church in East Street from 10am to 3.30pm. [www.westcountryrecordfairs.co.uk](http://www.westcountryrecordfairs.co.uk)

**Bridport Vegan, Eco-Living, Art & Craft Markets** happen periodically in the Town through the year, please contact Bridport Tourist Information for dates and venues.





# Dorset's Eventful Town!

Bridport and West Bay are known throughout the County as 'Dorset's Eventful Town' due to the impressive list of events that happen throughout the year. The majority are organised by volunteers – another great advert for the town's community spirit!

For a full list of events visit [www.bridportandwestbay.co.uk](http://www.bridportandwestbay.co.uk)



Month	Event	Location	Website/organiser
January	<b>Wassailing</b>	St Mary's Community Orchard	<a href="http://www.bridportcommunityorchard.org.uk">www.bridportcommunityorchard.org.uk</a>
February	<b>Pantomime</b>	Electric Palace	<a href="http://www.facebook.com/bridportpantomimeplayers">www.facebook.com/bridportpantomimeplayers</a>
April	<b>From Page to Screen Film Festival</b>	Arts Centre/Electric Palace	<a href="http://www.frompagetoscreen.org.uk">www.frompagetoscreen.org.uk</a>
May	<b>Spring Concert</b>		<a href="http://www.bridportchoral.wordpress.com">www.bridportchoral.wordpress.com</a>
	<b>Community Fair</b>	Millennium Green	<a href="http://www.bridportandwestbay.co.uk">www.bridportandwestbay.co.uk</a>
	<b>West Bay Pirates Day</b>	West Bay	<a href="http://www.westbay.org.uk">www.westbay.org.uk</a>
	<b>Bridport Jurassic Coast Challenge</b>	West Bay, Eype	<a href="http://www.bridport-runners.co.uk">www.bridport-runners.co.uk</a>
June	<b>Bridport Food Festival</b>	Various/Asker Meadows	<a href="http://www.bridportfoodfestival.co.uk">www.bridportfoodfestival.co.uk</a>
	<b>Bridport Beer Festival</b>	Asker Meadows	<a href="http://www.bridportroundtable.co.uk">www.bridportroundtable.co.uk</a>
	<b>West Dorset Vintage Tractor Rally</b>	Melplash Showground, West Bay	<a href="http://www.wdvtsec.com">www.wdvtsec.com</a>
July	<b>Jurassic Fields Music Festival</b>	West Bay Fields	<a href="http://www.jurassicfields.com">www.jurassicfields.com</a>
	<b>RNLI Raft Race</b>	River Brit, West Bay	RNLI – Bridport Branch 01308 427212
	<b>Bridport Folk Festival</b>	Various	<a href="http://www.bridportfolkfestival.co.uk">www.bridportfolkfestival.co.uk</a>
August	<b>Carnival &amp; Torch Light Procession</b>	Bridport/West Bay	<a href="http://www.bridportcarnival.co.uk">www.bridportcarnival.co.uk</a>
	<b>West Bay Fun Day</b>	West Bay	RNLI – Bridport Branch 01308 427212
	<b>Melplash Agricultural Show</b>	Melplash Showground, West Bay	<a href="http://www.melplashshow.co.uk">www.melplashshow.co.uk</a>
	<b>Bridport Musical Theatre Production</b>	Electric Palace	<a href="http://www.bridportmusicaltheatre.co.uk">www.bridportmusicaltheatre.co.uk</a>
September	<b>Bridport Hat Festival</b>	Bridport	<a href="http://www.bridportthatfest.org">www.bridportthatfest.org</a>
	<b>Bridport Open Studios</b>	Various	<a href="http://www.bridportopenstudios.co.uk">www.bridportopenstudios.co.uk</a>
	<b>Heritage Open Day</b>	Various	<a href="http://www.bridportandwestbay.co.uk">www.bridportandwestbay.co.uk</a>
October	<b>Apple Day</b>	St Mary's Community Orchard	<a href="http://www.bridportcommunityorchard.org.uk">www.bridportcommunityorchard.org.uk</a>
	<b>Bridport Prize Award</b>	Arts Centre	<a href="http://www.bridportprize.org.uk">www.bridportprize.org.uk</a>
	<b>Bonfire by the Beach with fireworks</b>	West Bay	<a href="http://www.westbay.org.uk">www.westbay.org.uk</a>
November	<b>Round Table Fireworks</b>	Leisure Centre	<a href="http://www.bridportroundtable.co.uk">www.bridportroundtable.co.uk</a>
	<b>Bridport Literary Festival</b>	Various	<a href="http://www.bridlit.com">www.bridlit.com</a>
December	<b>Christmas Tree Festival</b>	United Church	<a href="http://www.bridport-team-ministry.org">www.bridport-team-ministry.org</a>
	<b>Christmas Concert</b>	United Church	<a href="http://www.bridportchoral.wordpress.com">www.bridportchoral.wordpress.com</a>
	<b>Christmas Cheer</b>	Late Night Christmas shopping	<a href="http://www.bridportchristmascheer.co.uk">www.bridportchristmascheer.co.uk</a>
	<b>Christmas tree lights switch-on</b>	West Bay	<a href="http://www.westbay.org.uk">www.westbay.org.uk</a>
	<b>Boxing Day Swim</b>	West Bay	<a href="http://www.bridportroundtable.co.uk">www.bridportroundtable.co.uk</a>

# Dorset's Eventful Town!

**Bridport Christmas Cheer** is organised by a team of volunteers to celebrate the start of Christmas in the Town. The FREE community event has something for all the family to enjoy. [www.bridportchristmascheer.co.uk](http://www.bridportchristmascheer.co.uk)

**Bridport Food Festival** is a much-loved fixture in Bridport's food calendar, organised by the Bridport Local Food Group, a committee of dedicated volunteers. The event celebrates the town and surrounding areas food and drink businesses, many of which run special events during the fortnight. The main event is at Asker Meadows when the Food Festival is joined by the Round Table's Beer Festival.

[www.bridportfoodfestival.co.uk](http://www.bridportfoodfestival.co.uk)

**Bridport Hat Festival** is a brilliant day and really shows off the Bridport community and artistic talents. Locals and visitors alike visit the town in their array of wonderful, wacky and crazy hats, many homemade, to take part in the Festival and the mass hatted photo shoot. The Festival kicks off with a hat amnesty when you can off-load your redundant and unwanted hat to be auctioned off for charity.

[www.bridportthatfest.org](http://www.bridportthatfest.org)

**Bridport Literary Festival** is an eclectic mix of writers of both fiction and non-fiction, together with poets and literary pundits, bringing intrigue, delight and possible debate to venues around the town. [www.bridlit.com](http://www.bridlit.com)

**Bridport Prize** was founded by the late Mrs Peggy Chapman-Andrews as a fund raiser for the Bridport Arts Centre in 1973. The aim is to encourage emerging writers and promote literary excellence. With over £16,000 in prize money it is one of the richest writing competitions in the UK. Open to all nationalities aged 16 years and over.

[www.bridportprize.org.uk](http://www.bridportprize.org.uk)

**Carnival & Torchlight Processions** The grand processions take place on the third weekend of August each year. The procession of floats travels up West Street, then down South Street on Saturday evening. The Torchlight procession takes place on the Sunday from Bucky Doo Square to West Bay for a celebration with live music and fireworks on East Beach – a wonderful sight! [www.bridportcarnival.co.uk](http://www.bridportcarnival.co.uk)



**From Page to Screen Film Festival** gives new and classic adaptations a fascinating context with discussions, Q&As and master classes with authors, screenwriters, directors and film academics. Affiliated with the world-renowned Bridport Prize for Literature, the festival is a highlight of Bridport's vibrant arts scene and an essential date in the cultural calendar. [www.frompagetoscreen.org.uk](http://www.frompagetoscreen.org.uk)

**Pantomime** The Bridport Pantomime Players, formed in 1965, put on a pantomime every February. They make their own costumes, scenery and props and have a great support team behind the scenes, helping with make-up, front-of-house, lighting, sound and staging. In August they also put on an annual variety show "Showtime". [www.lyricschoolofdancing.co.uk/pantomime](http://www.lyricschoolofdancing.co.uk/pantomime)

**Melplash Agricultural Show** is an annual event organised by the Melplash Agricultural Society to promote and celebrate the best of farming and produce in the area. Held on the Thursday before August Bank Holiday the day is truly a great day out for all the family. [www.melplashshow.co.uk](http://www.melplashshow.co.uk)



# Wonderful West Bay

Where the river Brit reach the sea is the jewel in Bridport's crown – West Bay - formerly the Town's harbour.

A harbour was recorded here as far back as the 13th Century. During the Napoleonic Wars (1799-1815) many ships were built here. It was renamed 'West Bay' when the train line was built connecting the town to the harbour in the late 1800s to attract day trippers to the seaside. The good times rolled until the 1930s when the train line closed to passengers. It operated as a goods only service until its final closure in 1962. Incredibly, the station remains to this day and is now a restaurant serving high-class meals and cocktails in the station and in two quirky railway carriages.

West Bay is now known as the Golden Gateway to the Dorset Jurassic Coast, nestling between Eype and Seatown to the west with views of Golden Cap, Lyme Regis, Beer Head and beyond; and to the east the sandstone cliffs lead to Chesil Beach and Portland Bill. With hills on either side of the harbour it provides excellent views and unforgettable coastal walks. It has attracted the attention of many TV and film productions looking for the perfect spot to set their scenes. Most recently (2013) it was the home of ITV's hit drama Broadchurch.

Over the years the sea defences have been strengthened to cope with the enormous pressures of coastal erosion and storms. Between 2002 and 2005 extensive work created a new slipway and outer harbour and the old West Bay pier was replaced with the new Jurassic Pier. Further defence work to help protect West Bay from flooding was completed at both East Beach and West Beach in 2019. During the works 40,000 tonnes of granite was used, as well as rocks as large as 10 tonnes!

The two shingle beaches – East and West Beach – are separated by the harbour. On East Beach the fine shingle beach stretches from the western end of Chesil Beach to the harbour at West Bay. The sandstone cliffs of East Cliff, rising almost 50metres (180ft) vertically, form a dramatic backdrop to the beach. Though spectacular these cliffs are very unstable with major rockfalls happening more and more frequently. Visitors MUST observe the various warning signs around the beach.



## Hidden Gem

*"We really didn't know what to expect when we arrived after a visit to nearby Bridport but we were very pleasantly surprised with what we found. A pretty harbour, beach area and a marina together with lovely little kiosks, cafes and shops - something for everyone to enjoy. More upmarket restaurants and pubs as well made this a great all-round destination."* Visitor from York, June 2022



Lifeguard cover is provided on East Beach by the RNLI from early July until early September seven days a week from 10 am – 6pm.

West Beach is composed of smooth pebbles with some sand and shingle close to the waters edge. It is a smaller quieter beach popular with young families. The protective cove formed between the harbour's Jurassic Pier and the Esplanade's rock armour groynes make it safe and shallow for paddling.



## Wheelchair & Buggy Access

In August 2022 special matting was purchased by the Bridport Town Council and installed on West Beach to provide wheelchair and buggy access to the beach. The path is made of specially made plastic and aluminium and is available during the summer season allowing the beach for the first time to be accessible to all. There are also two wheelchair accessible picnic benches installed on the Esplanade



A further project in March 2023, lead by West Dorset Mencap and the Bridport Town Council, has successfully purchased three beach wheelchairs, all quite different in design to meet different mobility needs. They are available to hire for free except for the Mobi Chair which floats and can enter the sea and requires support from a trained instructor. This support is provided free of charge to Dorset residents; there is a charge of £15 per session (30 minutes maximum) for those visiting from outside of Dorset. To book a beach wheelchair, contact Bridport Town Council on 07342 236443. A minimum of three days' notice is required.

Dogs are welcome on East Beach and West Beach between 1 October and 30 April. From the areas where the cliff starts, dogs are always welcome, but care should be taken to walk well away from the base of the cliffs. On the permitted beaches, dogs can be let off the lead but must be kept under reasonable control.

## Top Tips for Beach Safety

- Swim at a lifeguarded beach between the red and yellow flags
- Never use inflatables in strong winds or rough seas
- Check tide times before you go
- If you get into trouble stick your hand in the air and shout for help
- If you see someone else in trouble, tell a lifeguard. If you cannot see a lifeguard call 999 or 112 and ask for the coastguard.



# BRIDPORT LOVES DOGS!

## Top tips for a tip-top day!



## KEEP COOL!

### Especially in hot weather

Pavements and cars can become very hot especially in sunny weather

## KEEP IN CONTROL!

### Be aware

Make sure you can see what your dog is up to, especially if they like exploring!

## STAY HYDRATED!

### Water Water Water

Bring water with you, and check for water dishes outside shops in town

## USE SHORT LEADS!

### Trip Hazards

On busy days, like market day, long leads can create a trip hazard. Short leads are the way!

## BAG IT & BIN IT!

### No one likes poo

Remember to pick up after your dog - help keep Bridport tidy - bag it and bin it!

## OTHER ANIMALS

### Dorset is a farming area

There have been sad instances of dogs attacking livestock. Keep your dog on a lead in country areas and follow the signs.





# Wonderful West Bay

**East Pier** although refurbished as part of West Bay's sea defence project in 2002/5 most of the original character and heritage has been retained in the construction.

**Jurassic Pier** is 240 metres long, has wheelchair access and plenty of seating. The walk along the long esplanade gives you lovely views of Eype and beyond.

**The Harbour** lies at the mouth of the River Brit. It has 163 drying moorings with the majority let for private use, 24 commercial moorings for either fishing boats or passenger vessels and pontoons available for visiting boats. Throughout the summer there are day boat trips to catch mackerel or cruises along the coast including trips to Lyme Regis. Being ideally positioned along the middle of Lyme Bay's coastline to over 60 known wrecks, it is popular with divers. [www.bridportharbour.co.uk](http://www.bridportharbour.co.uk)

**River Brit** rises just to the north of Beaminster. It flows south to Netherbury and Bridport where it is joined by tributaries: the River Simene and River Asker. It reaches Lyme Bay on the English Channel coast at West Bay. Rowing boats and canoes are available to hire for a trip up the River Brit to the Brewery. If you wish to fish the River Brit, Asker or Simene you will need a rod fishing licence.

## West Bay Discovery Centre

A visit to the award-winning Discovery Centre, housed in a restored former Methodist Chapel, is a perfect way to start exploring West Bay and this stretch of the Jurassic Coast. On offer is a treasure trove of information and fascinating facts about West Bay and the coast for all ages to enjoy. A programme of talks, guided walks and events are also on offer. Entry to the Discovery Centre is FREE. [www.westbaydiscoverycentre.org.uk](http://www.westbaydiscoverycentre.org.uk)

## West Bay Summer Wednesday Market

The evening market takes place at the Salt House and Fisherman's Green in West Bay during July and August, offering a variety of handmade arts and crafts including jewellery, cards, home furnishings and more.

## West Bay Car Boot

It is held in the West Bay Road Car Park every Sunday from April through to October (weather permitting) from 7.30 am to 11.30 am. It is run by the Bridport Town Council. The income from this is used to provide funding for community projects in the Bridport area.



## West Bay Play Area

A free and inclusive Play and Picnic area for all ages and abilities to enjoy alongside each other. It was created through a partnership between Bridport Town Council and the local charity BYPAT (Bridport Young Persons Action Trust) and reflects its setting on the Jurassic Coast and the area's history of rope making. The purpose-built design is based on a "ship" wrecked on the rocks and broken into three pieces, with robust climbing structures and swings. Changing Places toilets open September 2023.

## Eating out

All tastes are catered for in the restaurants, cafés and pubs as well as the many kiosks around the harbour. Whether you prefer fish 'n chips on the pier or a slap-up lobster dinner, you will certainly find what you're looking for.

## Events

Throughout the year there are many community events organised for all the family to enjoy including:

**Pirates Day** in May organised by West Bay Days.

**The RNLI Raft Race** in July. The very popular raft race takes place on the River Brit to raise funds for the local RNLI.

**West Bay Day** in August, a day of music and entertainment to celebrate the areas rich history and heritage organised by West Bay Days.

**Christmas Tree light** switch-on with free refreshments on the Harbour Green.

**Bonfire by the Beach** in November organised by West Bay Days and the Bridport Round Table.

For up-to-date information visit [www.westbay.org.uk](http://www.westbay.org.uk)

Get your

BRIDPORT & WEST BAY  
BEAUTIFUL PHOTOGRAPHS

at my NEW

# GALLERY

PRINTS • CANVAS • CARDS

42 South Street • Bridport • DT6 3NN

Open Tue / Wed / Fri / Sat

also within Customs House Emporium  
Station Rd • West Bay • DT6 4EN



NB

NEIL  
BARNES

BRIDPORT & WEST BAY  
PHOTOGRAPHER

[www.neilbarnes.com](http://www.neilbarnes.com)  
[galleries@neilbarnes.com](mailto:galleries@neilbarnes.com)

[www.westbaypictures.co.uk](http://www.westbaypictures.co.uk)

## Fishing

The East Pier, Jurassic Pier, West Bay Beach, the Harbour or nearby Eype are popular fishing destinations. Remember to read all the relevant angling signs found on the pier and the harbour.

**Summer species:** Mackerel, dogfish, garfish, gurnard, flatties, rays, bass, mullet, bream and wrasse. **Winter Species:** codling, whiting and plaice.

During the summer months there are several fishing boats offering fishing trips out to sea. Suitable for all ages and all anglers from novice to expert.

**West Bay Sea Angling Club** was founded in 1951. Matches take place throughout the year; many of them taking place on the famous Chesil beach which runs from West Bay to Portland. [www.west-bay-sea-angling-club.co.uk](http://www.west-bay-sea-angling-club.co.uk)

## On-the-water activities

**Paddle Boarding** is available from Bay Paddle Boards and is offered with a fully qualified Paddle Board instructor on the sea and along the River Brit. [www.baypaddleboards.co.uk](http://www.baypaddleboards.co.uk)



**Bridport Gig Rowing Club**, est. in 2007, offers its members rowing on the stunning Jurassic coast from West Bay. There are over 150 members from the age of 11 upwards, who regularly train and race in the club's 5 traditional Cornish pilot gigs: Brydian, Dagger, Blaez, Buckydoo and Bathsheba. [www.bridportgigclub.org](http://www.bridportgigclub.org)

**The Heritage Coast Canoe Club** is based at the Water Sports Centre on Fisherman's Green. It is open to members of all ages from 12 years and caters for all abilities from novice to advanced paddlers. It has around 40 boats including canoes and kayaks for the sea and river. From April to the end of September they paddle from 6.30-8.30pm weekly on Tuesday evenings. [www.bridportkayaking.org](http://www.bridportkayaking.org)

**Water Polo** has a long history in Bridport dating back over 100 years. During the summer, **The Bridport Barracudas Water Polo Club** plays several friendly matches at their historic home in the harbour. [www.bridportwaterpolo.org.uk](http://www.bridportwaterpolo.org.uk)

**Rowing Boats** Available to hire for trips up the River Brit. [www.westbayriverboats.info](http://www.westbayriverboats.info)

**Rib Boat Trips** along the coast or to Lyme Regis operate from the passenger pontoons by the bridge in the inner harbour by Lyme Bay Charter. [www.lymebayribcharter.co.uk](http://www.lymebayribcharter.co.uk)





**JAMES LOVERIDGE**  
PHOTOGRAPHY

- Prints
- Calendars
- Greeting Cards
- Postcards

Shop locally in West Bay at Harbour Gifts or in Bridport at Rise Bakery, Art Unlimited, Highlands End Holiday Park Spar & Sea Purslane.

Or shop online at [www.jamesloveridgephotography.co.uk](http://www.jamesloveridgephotography.co.uk)





# Wonderful West Bay

## Walks

**West Bay to Freshwater and Burton Bradstock** is a half hour walk (approx. ¾ mile). The initial climb to the top of east cliff which is steep is a challenge for many but once achieved the rest of the walk is relatively easy.

**West Bay to Eype** is a relatively easy 25 minutes' walk of less than a mile. The gradients of hills and obstacles involved are suitable for even inexperienced walkers, the reward being superb Lyme Bay coastal and inland views.



**West Bay Days** is a small not-for-profit voluntary organisation which seeks to help the local community by running four popular annual family events in West Bay and supporting local charities and groups through its Annual Awards and Small Grants Fund. [www.westbay.org.uk](http://www.westbay.org.uk)

**West Bay Water Sports Centre** with a pontoon for launching into the River Brit opened in October 2014. It is the home of the Heritage Coast Canoe and Kayak Club and Bridport Gig Rowing Club.

**Salt House** on Fisherman's Green is one of West Bay's historic maritime buildings, a community venue and available to hire. [www.bridport-tc.gov.uk](http://www.bridport-tc.gov.uk)

**Sea Cadets** – TS Keppel, Plottingham Playing Fields, West Allington DT6 5BJ  
Ages 10-18. Meetings are held on Tuesdays, 7.15pm-9.15pm. Contact: 01308 456601  
[bridportsc@outlook.com](mailto:bridportsc@outlook.com)

**West Bay Sea Scouts RN 19** with an emphasis on water activities including kayaking, canoeing, sailing, pulling, plus normal Scout activities. Beavers: ages 6yrs – 7.5yrs. Cubs: ages 7.5yrs – 10.5yrs. Scouts: ages 10.5yrs – 14 yrs (These ages can be flexible). Contact Roger Higham (GSL) 01305 873 978 [rogerhigham@gmail.com](mailto:rogerhigham@gmail.com)

*West Bay is a special place both to the people who live and work here and the visitors returning time and time again. Its mix of people, food and sheer fun makes it an unforgettable seaside experience!*

## A Stormy Day At West Bay

Fishing boats dance in the harbour  
To the tune of the ebb and flooding swell  
Fishermen tend their warps and fenders  
No fishes today to sell

The sea is lashing the tall red cliffs  
The shingle beach is singing  
Many a tall ship has floundered here  
With a south westerly storm in its rigging

Children dodge the spray of a goffer  
As it breaches the pier walls with foam  
Soaked to the skin with his cheeky little grin  
Just wait until he gets home

Umbrellas rendered useless in the storm  
The heavy black sky looks surreal  
Seagulls buffeted crazy in flight  
No chips today to steal

Signs have all blown over  
Bins roll down the street  
Couples hold on tight to each other  
Cars are splashing wet feet

Oldies flood the tearooms  
With misted window panes  
Can't remember it ever being this bad  
Not coming here again

But then a miracle happens  
As the sun begins to beam  
And people start to circulate  
There's queuing for ice cream

So things return to normal  
In this blustery quaint West Bay  
Perhaps we will come back again  
If the weather forecasts ok

*By Rob Green of Wareham*

# The Surrounding Area



In the immediate area surrounding Bridport there are plenty of historic and picturesque village, walks and beaches to discover.

## Beaches with coastal walks

**Eype** (1.25 miles from Bridport) The tiny village with its excellent beach is situated between Eype Down and Eype's Mouth, in the shadow of Thorncombe Beacon. It has a small church (St Peter's) which is used for artistic events, a pub, hotel, tea rooms and holiday park with bar and restaurant. Eype Beach welcomes dogs all year round.

**Seatown** (3.5 miles west of Bridport) To the west of Eype is the delightful hamlet of Seatown, situated between the great cliffs of Golden Cap and Thorncombe Beacon. Its shingle beach shelves steeply making it a favourite with fisherman. There is a car park for walkers using the wonderful coastal path or for those visiting the award-winning pub. Dogs are welcome on Seatown Beach between 30 September and 30 April. Recognised as one of the best beaches in Britain by the Saturday Telegraph in May 2023!

At our woodfired, beach-side sauna you will find the dedicated space and time to reconnect with your body and the elements. Wake up your senses! Let nature be your spa! Here you will find space to relax, socialise and recharge your body and mind. Private hire – £60 an hour for you and your group. Communal sessions – £10 per person.

**Find us at Seatown Beach (opposite The Anchor Inn, DT6 6JU)**



[seasidesaunahaus.co.uk](http://seasidesaunahaus.co.uk)  
@seasidesaunahaus  
07845 576112

**Charmouth** (7 miles west of Bridport) An unspoilt seaside village set in an Area of Outstanding Natural Beauty with a fantastic beach world renowned for its fossils. The Charmouth Heritage Coast Centre is situated on the beach and has a great display of the geology and fossils of the area. Try a guided fossil hunting walk along the Jurassic Coast. Entry to the centre is free. [www.charmouth.org](http://www.charmouth.org)

**Burton Bradstock** (2.4 miles along the coast road from Bridport) A picturesque village with a coastline that is part of the National Trust. It has a primary school, a church, two pubs, a hotel and café, a restaurant, two holiday parks, a village store, library, reading room and post office. Burton Beach is surrounded by spectacular sandstone cliffs and has a café/restaurant, and it has two wheelchair accessible picnic benches. Parking is with the National Trust. Dogs are welcome on Burton Beach from 1 October to 30 May. If you walk east or west from the main area of the beach in front of the cliffs, dogs are welcome here all the year round.

**Cogden Beach** (4 miles east of Bridport along the coast road) It is a quiet section of Chesil Beach. Popular with anglers and dog walkers. Owned by the National Trust, the shingle beach is flanked by farmland and reed beds, creating a haven for bird species and wildflowers. Parking is with the National Trust. Dogs are welcome all year round.

**West Bexington** (7 miles east of Bridport along the coast road) It is a small coastal village on the Chesil Beach surrounded by National Trust land. The village has a hotel, farm shop, holiday park and restaurant. There is a nature reserve with a Site of Special Scientific Interest behind the beach. The shingle beach shelves steeply making it extremely popular with fishermen. Dogs are allowed in certain areas, see signage.

## Villages with country walks

There are plenty of villages nearby offering country walks, a pub serving food, outside seating in the summer and many with roaring fires in the winter:

- Askerswell (4 miles via A35)
- Burton Bradstock (3 miles via A3066)
- Chideock (3 miles west of Bridport)
- Eype (1.8 miles west of Bridport)
- Litton Cheney (6.5 miles via A35)
- Lodgers (2.5 miles via A3066)
- Melplash (4 miles north of Bridport)
- Nettlecombe (4.6 miles via 3066)
- Powerstock (4.5 miles via A3066)
- Pymore (1 miles via Victoria Grove)
- Seatown (3.6 miles west of Bridport)
- Shaves Cross (5 miles via A3162)
- Shipton Gorge (3 miles via A35)
- Stoke Abbott (6 miles via B3162)
- Symondsburly (1.5 miles west of Bridport)
- Uploders (3.6 miles via A35)



# The Surrounding Area

## Landmarks

**Allington Hill & Coopers Wood**, adjoin the Town and can be accessed from West Allington or North Allington. Allington Hill is an Iron Age fort rising 90m (300ft). It is owned by the Woodland Trust and is looked after by the Allington Hillbillies (a community group that volunteer to the Woodland Trust). It is open land and is open to everyone. [www.allingtonhillbillies.org.uk](http://www.allingtonhillbillies.org.uk)

**Colmers Hill** (2 miles from Bridport in the village of Symondsburry) Although there is not a public footpath, the Colfox family who own the Symondsburry Estate do allow access to it up a permissive path. The footpath is signposted from the Symondsburry Estate car park where you can leave the car for free and enjoy a coffee or snack. It will take between 30 and 40 minutes to the top from where you will have a panoramic view of the sea and the beautiful rolling hills of the Dorset countryside. Ideal for photo opportunities. [www.symondsburryestate.co.uk](http://www.symondsburryestate.co.uk)

**Conegar Hill** in Bridport 65m (213ft). Battle of Trafalgar anniversary tree and plaque. Main approach is from Mountfield. [www.bridportmillenniumgreen.co.uk](http://www.bridportmillenniumgreen.co.uk)

**Thorncombe Beacon** (National Trust) is one of the chain of beacon sites along the south coast used to warn of the approach of the Spanish Armada in 1588. It can be walked from both Eype (½ mile) or Seatown (1 mile).

**Langdon Hill** (4 miles West of Bridport) It is accessed from the A35 between Chideock and Morcombelake. Owned by the National Trust, there is an easy circular walk around the wood of Scots Pines and larch. For a longer walk you can leave the wood and walk downhill to the coast at Seatown or uphill to Golden Cap with superb coastal views. The car park is with the National Trust.



## Gardens to visit

**Mapperton House & Gardens** DT8 3NR (6 miles from Bridport) The Gardens and Coach House Café open in March. Visit [www.mapperton.com](http://www.mapperton.com) for opening dates and hours.

**Abbotsbury Subtropical Gardens** DT3 4LA (9.5 miles from Bridport) Open all year around (closed Christmas and New Year days) from 10am – 5pm\* (\*may be subject to change). Coffee shop is open every day 10am – 3.30pm (kitchen open 10am-2.30 pm). [www.abbotsbury-tourism.co.uk/gardens](http://www.abbotsbury-tourism.co.uk/gardens)

**Forde Abbey Historic House & Gardens** TA20 4LU (13 miles from Bridport) The Gardens, coffee shop, gift shop & plant nursery are open daily from 1st March – 31st October from 10.30am – 5pm (last entry 4pm) Booking is not required. The House is open from 1st April – 30th October from 12.00pm onwards (last entry at 3.30pm). The House is open Tuesday to Friday, Sunday & Bank Holiday Mondays.

**Golden Cap** (National Trust) the highest point on the south coast at 191m (627ft) offers magnificent views at every compass point. There is a steep but spectacular walk from Seatown car park or a less taxing walk from the car park at Langdon Hill. On a clear day you can see across Lyme Bay to Dartmoor in one direction, across to Portland Bill in the other and inland to Pilsdon Pen. [www.nationaltrust.org.uk/goldencap](http://www.nationaltrust.org.uk/goldencap)

**Lewesdon Hill** (approx. 5 miles inland from Bridport) It is the highest point in Dorset at 279m (915ft) high with views between the trees over Devon, Somerset and out to sea. There are two main footpaths: one from the village of Broadwindsor, and one from Coombe Lane (off the B3162 between Bridport and Broadwindsor). It is owned by the National Trust.

**Pilsdon Pen** (approx. 7miles inland from Bridport) It is a 277m (909ft) hill situated at the north end of the Marshwood Vale with amazing views over the Marshwood Vale to the south and the Axe Valley to the north. Owned by the National Trust, it is one of Dorset's prominent landmarks and is dominated by an Iron Age Hill fort. There is no parking on site, and it is a steep climb from the lay-by).

**Eggardon Hill** (4 miles from Bridport off the A35 to Dorchester) It is an Iron Age hill fort that stands 252m (827ft) above seal level with panoramic views to the south, west and north. The southern half of the hill is owned and maintained by the National Trust.



# The Surrounding Area

## Destinations

**Symondsburry Estate** (2 miles west of Bridport) The Estate has a restaurant, hair & beauty, various independent retailers including ladies' fashion, jewellers and home & garden and a tithe barn for hire. Open all year. [www.symondsburryestate.co.uk](http://www.symondsburryestate.co.uk)

**Abbotsbury Swannery & Tropical Gardens** (10 miles east of Bridport via coast road B3157) [www.abbotsbury-tourism.co.uk](http://www.abbotsbury-tourism.co.uk)

**Marshwood Vale** (4+ miles from Bridport) lies to the north of the A35 trunk road between Bridport and Lyme Regis, and to the south of the two highest hills in Dorset – Lewesdon Hill and Pilsdon Pen. It is drained by the River Char which flows south-west to its mouth in Charmouth. The entire Vale lies within Dorset's Area of Outstanding Beauty (AONB).

**Beaminster** (6.5 miles north of Bridport via B3066). An attractive small historic market town. The hub is the town square surrounded by a variety of independent shops, restaurants, cafés and pubs. [www.discoverbeaminster.co.uk](http://www.discoverbeaminster.co.uk)

**Broadwindsor** (7 miles from Bridport, 2 miles from Beaminster) A village with a school and a community run shop and pub. Footpath to Lewesdon Hill.



**S.H.E.D.**  
Sustaining Humanity. Est. 2014

hair & beauty  
eco salon

01308 423339  
[www.theshedboutique.co.uk](http://www.theshedboutique.co.uk)

Symondsburry Estate  
DT6 6HG

**Redlands Yard**, Broadwindsor (7 miles north of Bridport) A craft centre with various retail outlets and a restaurant. Open all year round.

**Furleigh Estate**, Salway Ash Award-winning vineyard with shop. Wine tours available throughout the year alongside other events. [www.furleighestate.co.uk](http://www.furleighestate.co.uk)

**Dorset Nectar Cider** orchard with shop. Tours given throughout the year. [www.dorsetnectar.co.uk](http://www.dorsetnectar.co.uk)

**Palmers Brewery** has been brewing fine cask ales in Bridport since 1794. Tours of Brewery given. Visit [www.palmersbrewery.com](http://www.palmersbrewery.com) for more information and times.

**Isaac Cider** orchard with shop. Award-winning ciders. [www.isaac cider.com](http://www.isaac cider.com)



**SYMONDSBURY ESTATE**

DISCOVER | EAT | SHOP | STAY | CELEBRATE

Welcome to Symondsburry Estate, set in the beautiful Dorset countryside just a stone's throw from the Jurassic Coast. Join us for lunch. Browse our shops. Explore our fabulous walks and bike trails. Relax and unwind in our holiday accommodation. Celebrate your wedding day...

+44 (0)1308 424116 [symondsburryestate.co.uk](http://symondsburryestate.co.uk)  
Symondsburry Estate, Bridport, Dorset DT6 6HG



**Colmers Hill**  
FASHION BOUTIQUE

Set in the beautiful surroundings of Symondsburry Estate, Colmers Hill Fashion is an award-winning women's clothing boutique with a large range of casual and occasion wear.

*"Excellent range of clothing and accessories, excellent service, an absolute gem"*

See website for opening times.

[www.colmershill.com](http://www.colmershill.com)

Manor Barn, Manor Yard,  
Symondsburry, Bridport, DT6 6HG  
Tel: 01308 426517







### Award-winning, Organic Cider, Apple Juices and Vinegars

#### Cider Farm Shop, Tasting Room and Cider Garden

Open Monday-Saturday 9-7pm year round

#### Cider Farm Tour & Tastings

every Thursday, Friday and Saturday at 11am-12.30 – contact to Book



Catch the Buzz;  
We offer an essential  
taste of Dorset



Strong Orchard, Pineapple lane, Waytown, Bridport, Dorset DT6 5FT  
Tel: 01308 488382 • [www.dorsetnectar.co.uk](http://www.dorsetnectar.co.uk)

## Where to stay



Bridport and West Bay is a great base for exploring the beautiful and unspoilt West Dorset and Jurassic Coast. There is a wide choice of different accommodation in Bridport, West Bay and the surrounding area: hotels, guest houses, pubs and inns, B&Bs, holiday parks, self catering holiday cottages, camping and caravan sites and luxury glamping. Whether a family holiday or a short break you'll not be disappointed. [www.bridportandwestbay.co.uk](http://www.bridportandwestbay.co.uk) or [www.visit-dorset.com](http://www.visit-dorset.com)



Level camping fields at West Bay • Open July and August

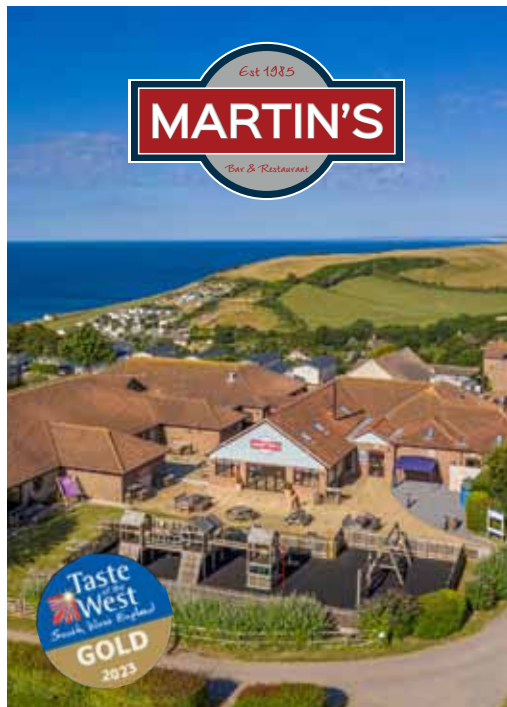
Further information on [www.brittvalley.co.uk](http://www.brittvalley.co.uk) • Tel: 01308 897232



## MARTIN'S BAR & RESTAURANT

- Open To All
- Locally-Sourced Menu
- Amazing Views
- Dog-friendly
- Tuesday Curry Night
- Sunday Carvery
- Daily Happy Hours
- Large Beer Garden
- Live Music & Events
- Children's Soft Play
- Costa Coffee
- Private Venue Hire

[martinsbarandrestaurant.co.uk](http://martinsbarandrestaurant.co.uk)  
[bar@wdlh.co.uk](mailto:bar@wdlh.co.uk) 01308 426919  
Highlands End, Eype, DT6 6AR



### Ammonite and Tiger cottages

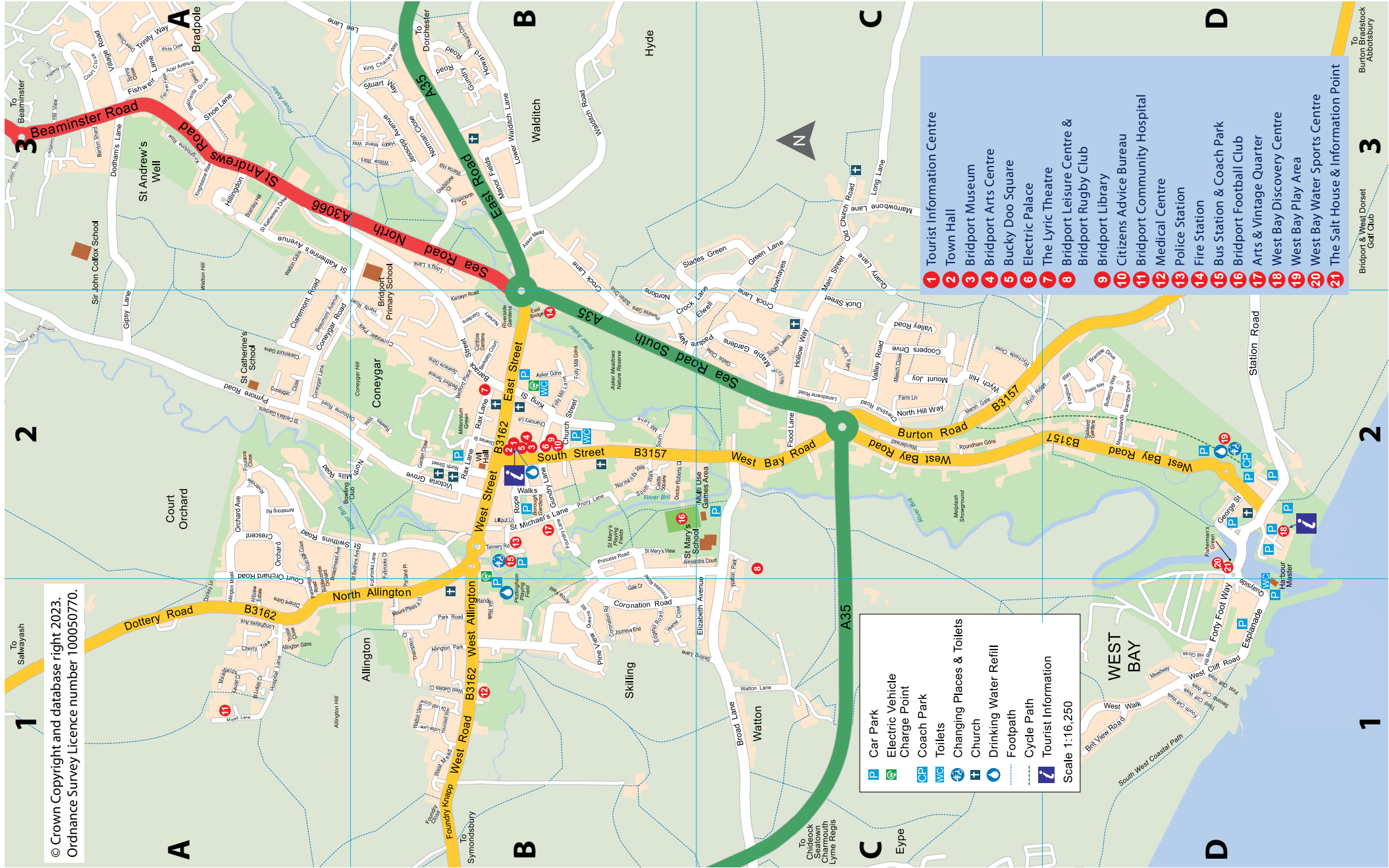
Two family friendly holiday cottages right in the heart of Bridport.

These cosy cottages are available all year, both can accommodate up to four people. Quiet and peaceful yet only minutes walk from the centre of town.

You can visit some of the locations in ITV's Broadchurch, go fossil hunting, relax on the beach or enjoy the many top quality restaurants, pubs and bars in the local area.

For more details contact us:  
t: 0790 6687 649  
e: [emilyaltham@yahoo.co.uk](mailto:emilyaltham@yahoo.co.uk)  
[www.ammonitecottage.wordpress.com](http://www.ammonitecottage.wordpress.com)





© Crown Copyright and database right 2023.  
Ordnance Survey Licence number 100050770.

P Car Park  
EV Electric Vehicle Charge Point  
CP Coach Park  
WC Toilets  
⚙️ Changing Places & Toilets  
⛪ Church  
💧 Drinking Water Refill  
🚶 Footpath  
🚲 Cycle Path  
I Tourist Information  
 Scale 1:16,250

- 1 Tourist Information Centre
- 2 Town Hall
- 3 Bridport Museum
- 4 Bridport Arts Centre
- 5 Bucky Doo Square
- 6 Electric Palace
- 7 The Lyric Theatre
- 8 Bridport Leisure Centre & Bridport Rugby Club
- 9 Bridport Library
- 10 Citizens Advice Bureau
- 11 Bridport Community Hospital
- 12 Medical Centre
- 13 Police Station
- 14 Fire Station
- 15 Bus Station & Coach Park
- 16 Bridport Football Club
- 17 Arts & Vintage Quarter
- 18 West Bay Discovery Centre
- 19 West Bay Play Area
- 20 West Bay Water Sports Centre
- 21 The Salt House & Information Point



# Bridport Street Index

Acer Avenue	A3	De Legh Grove	B1	Happy Island Way	B3
Alexandra Court	B2	Diment Gardens	A1	Hardy Road	B2
Alexandra Road	B2	Doctor Roberts Close	B2	Hill Close	D1
Allington Gardens	A1	Dodhams Lane	A3	Hill Rise	D1
Allington Mead	A1/A2	Donkey Lane	A1	Hillingdon	A3
Allington Park	B1	Downes Street	B2	Hillview Estate	A1
Armstrong Road	A2	Drew Close	A3	Hospital Lane	A1
Arrowfield	B1	Duck Street	C2	Houndsell Way	B1
Asker Gardens	B2			Howard Close	B3
		East Bridge	B2	Howard Road	B3
Banton Shard	A3	East Road	B3		
Barrack Street	B2	East Street	B2	Jessopp Avenue	B3
Beaminster Road	A3	Edgehill Road	B1	Journeys End	B1
Beaumont Avenue	A2	Elizabeth Avenue	B1/C1		
Bedford Place	B2	Elwell	B2/C2	Kenwyn Road	B2
Bedford Terrace	B2	Esplanade	D1	King Charles Way	B3
Berkeley Court	B2			King Street	B2
Biddlecombe Orchard	A2	Farm Lane	C2	Kingsnorth Close	B3
Bothen Drive	B3	First Cliff Walk	D1	Knightstone Rise	A3
Bowhayes	C3	Fishweir Fields	A3		
Bramble Drive	D2	Fishweir Lane	A3	Lake Lane	C2
Bramley Hill	A3	Flood Lane	C2	Lansdowne Road	C2
Brit View Road	D1	Folly Mill Gardens	B2	Laurel Close	A1
Broad Lane	C1	Folly Mill Lane	B2	Lee Lane	A3/B3
Broadmead Avenue	A2	Forty Foot Way	D1	Lilliput Lane	B2
Burton Road	D3	Foundry Close	B1	Lodge Lane	B1
Buttercup Way	D2	Foundry Knapp	B1	Long Lane	C3
		Foundry Lane	B2	Longhayes Avenue	A1
Castle Square	B2	Fouracre Close	A2	Long's Lane	B3
Chancery Lane	B2	Fourth Cliff Walk	D1	Lower Walditch Lane	B3
Cherry Tree	A1	Fox Close	A3		
Chestnut Road	C2	Foxglove Way	D2	Magdalen Lane	B1
Church Street	B2	Fulbrooks Close	A2	Main Street	C3
Claremont Gardens	A2	Fulbrooks Lane	B2/B3	Manor Fields	B3
Claremont Road	A1/A2			Maple Gardens	C2
Coneygar Close	A2	Gale Crescent	B3	Marrowbone Lane	C3
Coneygar Lane	A2	Garden Close	B2	Marsh Gate	C2
Coneygar Road	A2	George Street	D2	Mead Lane	A1
Coopers Drive	C2	Gipsy Lane	A2	Meadowlands	D2
Cordova Gardens	B2	Gladstone Close	B3	Meadfields	A1
Coronation Road	B1	Glebe Close	C2	Meadway	D1
Court Close	A3	Green Close	A3	Meech Close	C2
Court Orchard Road	A2	Green Lane	C3	Mount Joy	C2
Crock Lane	B3	Gundry Lane	B2	Mount Pleasant	B3
		Gundry Road	B3		



Nordons	B2	Rivervale	A2	Trustin Close	A1
Norman Close	B3	Rope Walks	B2	Valley Road	C2
Normandy Way	B2	Roundham Gardens	C2	Vearse Close	B1
North Allington	A2/B2	Sea Road North	B3	Vicarage Court	A2
North Hill Way	C2	Sea Road South	B2/C2	Victoria Grove	B2
North Mills Road	A2/B2	Seaward Gardens	D2	Village Road	A3
North Street	B2	Second Cliff Walk	D1		
Nursery Gardens	B2	Shoe Lane	A3	Walditch Road	B3
		Skilling Hill Road	C1/C2	Wanderwell	C2
Old Church Road	C3	Skilling Lane	B1	Warne Hill	B3
Orchard Avenue	A2	Slades Green	B3/C3	Watton Gardens	A3
Orchard Crescent	A2	South Lawns	C2	Watton Lane	C1
Osbourne Road	A2	South Mill Lane	B2	Watton Park	C1/C2
		South Street	B2	Watton View	B1
Park Road	B1	South Walk	B2	Wellfields Drive	A3
Parsonage Road	A2	Sparacre Gardens	B2	West Allington	B1
Pasture Way	B2/C2	Spring Close	A3	West Bay Road	C2/D2
Pine View	B1	St Andrews Road	A3	West Cliff Road	D1
Plumtree Gardens	B3	St Cecilians Gardens	A2	West Gables Close	B1
Poppy Way	D2	St Katherines Avenue	A3	West Mead	B1
Portland Place	B1/B2	St Katherines Drive	A3	West Road	B1
Princess Road	B1/B2	St Lukes Court	A1	West Street	B2
Priory Lane	B2	St Mary's View	B2	West Walk	D1
Pymore Road	A2	St Michaels Lane	B2	White Close	A3
		St Swithins Avenue	A2	Willow Way	A3
Quarry Lane	C3	St Swithins Road	A2/B2	Wych Hill	C2
Quayside	D1	Stuart Way	B3	Wych Ridge	C2
Queens Road	B1			Wychside Close	C2
		Tannery Road	B2		
Rawles Way	B2	Third Cliff Walk	D1		
Rax Lane	B2	Thompson Close	B1		
Rendalls Walk	B1	Trinity Way	A3		
Riverside Gardens	B2				

# Delicious Food and Drink

The area is blessed with an impressive choice of independent food and drink businesses who actively promote and are committed to sourcing local produce as part of their offer. The town's street market, which takes place each week on both a Wednesday and Saturday adds to the variety. Just outside the town there are fabulous farm shops with cafés that are open throughout the week to enjoy.

Whether you are shopping for something delicious or looking to source a treat that is unique to West Dorset to take home you are sure to find it here.

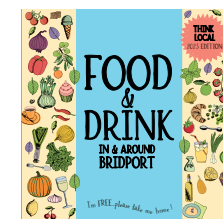
There are great places to eat out at too – sit down meals in the comfortable surroundings of a hotel or restaurant, a drink and a meal in one of the many pubs or eating al fresco at one of the West Bay's beach kiosks, will satisfy most culinary cravings. Locally sourced ingredients of meat, fish and produce dominate most menus.

The town supports its farming community and local food producers by hosting the annual Bridport Food Festival in June and in August, the annual Melplash Agricultural Show.



*"A rich tradition of farming, growing and food production and the combination of great soil and nearby coastline make Bridport and West Bay the ideal destination for all lovers of great food and drink."*

If you enjoy your food and drink do pick up a copy of **A Guide to Food & Drink, In and Around Bridport** produced by the Bridport Local Food Group. This handy pocket-sized free guide features the full range of food and drink businesses in Bridport and the surrounding villages and is a must for the hungry visitor! It is available from the Bridport TIC and local food and drink outlets.



breakfasts: all day  
soups  
sandwiches  
paninis  
salads  
jacket potatoes

cream teas  
cakes  
ice cream  
tea  
coffee

41 south street bridport dorset dt6 3ny  
01308 422115 www.cafe-bean.co.uk

Pizzeria  
Weds-Sat 5pm-11pm. Last Orders 9pm

Deli  
Mon-Tues 9am-4pm, Weds-Sat 9am-9pm

Unit 3B Dreadnought Trading Estate, Bridport, DT6 5BU  
01308 459274 • mercatoitaliano.uk

## RJ BALSON & SON

High Class Family Butchers

VISIT ENGLAND'S OLDEST FAMILY BUSINESS  
TRADING SINCE 1515

Good old fashioned customer service & local Free-range meat

9 West Allington, Bridport, DT6 5BJ • Tel: 01308 422638

# TAJ MAHAL RESTAURANT

Established in Bridport in 1983

Serving delicious authentic Indian curries

The Choudhury family welcome you to their award-winning restaurant in Bridport established in 1983, now the oldest restaurant in the town!!

All dishes are prepared freshly on the premises using their own homemade recipes. There is a wide selection of lamb, chicken, prawn and vegetarian dishes available to suit all tastes.

Also rabbit dishes as cooked for River Cottage on Channel 4 and Naga curries as cooked for Sir Terry Wogan for his programme 'Great Food Trips'..

**Open every day for lunch, dinner and takeaway service**  
**For reservations or takeaway call 01308 421000 / 424956**

20 East Street, Bridport. DT6 3LF [www.tajmahalbridport.com](http://www.tajmahalbridport.com)



**PALMERS**  
BREWING IN DORSET SINCE 1794

JOIN US ON A TOUR OF OUR HISTORIC BREWHOUSE. FOLLOW THE PROCESS FROM THE RAW INGREDIENTS THROUGH TO A FEW PINTS OF THE FINAL PRODUCT.

[PALMERSBREWERY.COM](http://PALMERSBREWERY.COM)

**ISAAC**  
CIDER

**Award-Winning Family Crafted Dorset Cider**

Picked by friends, made by family, best drunk with both

Visit our Cider Shop on the farm (DT8 3LZ) or buy online [isaaccider.com](http://isaaccider.com)

**Long's**  
*Fish and Chip Restaurant and Take Away in Bridport*

Long's have two locations in Bridport, one in West Street and one in King Street, where you can eat in at our restaurant or outside tables or takeaway traditional fish and chip fare. We offer a gluten free menu at West Street every day. If you would like to make a reservation or have a hungry (coach) party please call us.

**Opening Hours**

**Takeaway**  
11.30am-2.00pm  
Evenings from 5.00pm

**Restaurant**  
11.30am-1.30pm  
Evenings from 5.00pm

**Sunday**  
Evenings from 5.00pm (West Street only)

Winter times may vary

[www.facebook.com/Longsfishandchips](http://www.facebook.com/Longsfishandchips)

[www.longsbidport.co.uk](http://www.longsbidport.co.uk)

[twitter@LongsBridport](https://twitter.com/LongsBridport)

15 King Street, Bridport 01308 423199

23 West Street, Bridport 01308 423041

**FRAMPTONS**  
OF BRIDPORT

**A traditional, independent, high-class family butcher and delicatessen.** Meat, poultry, cooked meats and cheeses from trusted suppliers in the South West as well as delicious pies and sausages made on the premises.

**Daily home delivery service • Open Monday to Saturday 8am - 3pm**

The Market House (under the Town Hall), Bridport DT6 3LF • 01308 422995





Kit Glaisyer

Bridport boasts a vibrant artistic community that is the envy of the West Country. It is home to a lively Café society of award-winning artists, writers, and musicians, along with numerous Arts events.

The Electric Palace in South Street presents a varied programme of events, on stage and on screen. It is not only a cultural gem, but an architectural one too. The building built in 1926 retains many of its original features in the Art Deco style. The Bridport Arts Centre is a multi-arts venue presenting a phenomenal year-round programme of music, theatre, and dance – plus exhibitions in the excellent Allsop Gallery.

Both venues host the Bridport Prize – a competition for Literature & Creative Writing (deadline end of May), the From Page to Screen Film Festival in April and the Bridport Literary Festival in November.

Other Festivals include Bridport & West Dorset Open Studios, which supports over 100 artists in dozens of venues in & around Bridport.

For cutting-edge Fine Art there is Sladers Yard Gallery & Café, the Kit Glaisyer Gallery, Art Unlimited, the Sou'-Sou'-West plus Eype Centre for the Arts, and the Salt House in West Bay. More artists' studios can be found at St Michael's Studios, in Bridport's popular Art & Vintage Quarter on a former rope & net-making estate.

**The Electric Palace**, 35 South Street DT6 3NY [www.electricpalace.org.uk](http://www.electricpalace.org.uk)

**Bridport Arts Centre**, 9 South Street DT6 3NR [www.bridport-arts.com](http://www.bridport-arts.com)

**Sladers Yard**, West Bay Road, West Bay DT6 4EL [www.sladersyard.co.uk](http://www.sladersyard.co.uk)

**Kit Glaisyer Gallery**, 11 Downes Street DT6 3JR [www.kitglaisyer.com](http://www.kitglaisyer.com)



## SLADERS YARD

Contemporary Art, Furniture and Craft Gallery  
CAFÉ SLADERS West Bay, Bridport DT6 4EL

Superb seafood & salad lunches, homemade cakes

Open 10am - 4.30pm Weds - Sat. Café also open Sundays

t: 01308 459511 reservations welcome [www.sladersyard.co.uk](http://www.sladersyard.co.uk)



**Sou'-Sou'-West' Arts Gallery**, Manor Yard Symondsburys Estate, DT6 6HG  
[www.sousouwest.co.uk](http://www.sousouwest.co.uk)

**Eype Centre for the Arts**, St Peter's Church, Eype DT6 6AR  
[www.eypechurcharts.co.uk](http://www.eypechurcharts.co.uk)

**St Michael's Studios**, St Michael's Trading Estate DT6 3RR  
[www.stmichaelsstudios.com](http://www.stmichaelsstudios.com)

**Art Unlimited**, 15 South Street DT6 3NR [www.art-unlimited.co.uk](http://www.art-unlimited.co.uk)

**Bridport Arts Centre** (a registered charity) Located in the heart of Bridport, the centre is known as the cultural hub of the Town hosting over 300 events a year in its theatre and, in its **Allsop Gallery**, free to enter. It was originally a Wesleyan Methodist Chapel and School House built in 1838. It had been involved in the arts since it was bought in May 1973 by The Bridport and District Arts Society. It brought international prominence to the town with its writing competition, **The Bridport Prize**; a creative writing competition established by the Arts Centre's founder Peggy Chapman-Andrews in 1973. Since September 2019 it has been independently owned.

**Bridport Sculpture Trail** – a showcase for installations by local artists. A 3-mile walk and sculpture trail linking the green open spaces around the town. It was instigated by Bridport based and Royal College trained artist Isla Chaney in 2019 when she placed some of her work in open spaces. Download the trail map from [www.bridportandwestbay.co.uk](http://www.bridportandwestbay.co.uk)



## Bridport Electric Palace

It was built as an opera house by the local brewing family, JC & RH Palmer. It opened on June 14th, 1926, to a packed audience of over 500 people and was named The New Electric Palace. The centre piece of the building is the collection of stunning "art deco" style murals. These decorate the foyer, stairs and landing and were designed and painted in 1936 by George Biles, the local brewery signwriter. Rescued from closure, it is now an independently run elegant 1920s theatre presenting an exciting programme of film, theatre, music and comedy. For full listings of events go to [www.electricpalace.org.uk](http://www.electricpalace.org.uk) or pick up a programme from the Tourist Information Centre (Tel: 01308 424901), where bookings can be made.

## Lyric Theatre

A charming old theatre, situated in Barrack Street, converted eons ago from its birth as a chapel in 1742. It was Bridport's first cinema, then a theatre, dance school and is now back to being fully licensed as a theatre. Artist/Performer Niki McCretton moved into the building in September 2010 and working with a small but dedicated team has successfully managed to get the building up and running as an artist-led venue and hireable space for creative people to come and make their work. There is a puppet laboratory upstairs where Holly Miller makes puppets and hosts the hugely popular Puppet Club for budding puppet makers/puppeteers ranging in age from 6 to 60+ years. Classes are run throughout the year. The theatre is run as a spontaneous venue for artists (and Stuff and Nonsense!) to create and showcase their work. If you're interested in bringing your work to the Lyric or hiring the venue email [admin@the-lyric.com](mailto:admin@the-lyric.com) or call 01308 423951. [www.the-lyric.com](http://www.the-lyric.com)

## Eype Centre for the Arts

St. Peters Church in Eype was transformed into a dual-purpose building for the use of the diocese and arts centre in 2003. It is now a well-known and loved venue for artistic events. These have included concerts, literary festivals, theatrical performances, art exhibitions and even used as recording studio with splendid acoustics. Details of what's on can be found on [www.eypechurcharts.co.uk](http://www.eypechurcharts.co.uk) Tickets are available to buy from the Bridport TIC or online at [www.bridportandwestbay.co.uk](http://www.bridportandwestbay.co.uk)



Bridport is a town that enjoys its music. From choral singing in the United church, Brass Bands and jazz in Bucky Doo on a Saturday morning, musicians playing in the town pubs and bars at the weekends to musical theatre, all tastes are satisfied.

Bridport is a Busking Friendly Town: buskers can often be found on the streets of Bridport especially on Saturdays.

## Bridport Musical Theatre

In 2007 a few friends with a common interest in musical theatre got together to form what is now Bridport Musical Theatre Company. Their aim was to promote the talented young and "not so young" singers, dancers and actors from Bridport and the surrounding areas, by providing a platform in staging popular musicals and dance shows. The first show they performed was the Boyfriend. They have followed this up with a performance every August. They rehearse on Thursday evenings and Sunday afternoons/evenings either at Balaclava Hall in South Street, or at the Youth Centre. [www.bmtc.blog](http://www.bmtc.blog)

## The New Elizabethan Singers

Formed in 1966 to enjoy singing together and prepare choral works, they perform two major concerts a year, often with orchestral accompaniment and professional soloists. The choir rehearses on Tuesday evenings at 7.30pm in the United Church Hall in East Street. [www.thenewelizabethansingers.org.uk](http://www.thenewelizabethansingers.org.uk)

## Bridport Choral Society

Established around 1900, the society currently has around 60 members who meet on Mondays at 7.30 pm in the United Church Hall. The Autumn session commences in early September, finishing with the Christmas Concert. The Spring session starts in early January and ends with the Spring Concert in May. [www.bridportchoral.wordpress.com](http://www.bridportchoral.wordpress.com)

## Bridport Folk Festival

Started in August 2017 the Bridport Folk Festival is three days of music and dance hosting more than 50 acts plus a wealth of Morris and Rapper sides. The Festival has become a firm date in the Folk Festival calendar. [www.bridportfolkfestival.com](http://www.bridportfolkfestival.com)

## Jurassic Fields Music Festival

The Festival runs over 3 days in July at West Bay Fields, accessible by Broomhills Nursery DT6 5LB, starting on Friday at 2pm and finishing on Sunday at 10pm. As well as being a community event that celebrates music and brings well-known names to the Town, it supports the tremendous musical talent that exists in Bridport and West Dorset by giving them a platform to display their talents. [www.jurassicfields.com](http://www.jurassicfields.com)

## Pubs and Bars

Great live music can be enjoyed for free in local pubs during the week and at weekends:

**Number 10 Café Bar** 10 East Street DT6 3LF

**The Ropemakers** 36 West Street DT6 3QP

**The George Hotel** 4 South Street DT6 3NQ

**The Crown Inn** 59 West Bay Road DT6 4AX

**The Market House** 17 West Street DT6 3QN

**The Woodman** 61 South Street DT6 3NZ

**The White Lion** 1 West Allington DT6 5BJ

## Buying Music

The town is fortunate to have 2 independently run shops selling music, as well as the monthly Vinyl Saturday (see page 15) when many shops and Street Market Traders also sell records and CDs.



## Bridport Music Centre

33a South Street 01308 455660

**Records, CDs, Guitars, Ukuleles, Banjos, Strings,  
Pics, Amps, Accessories, Books, Stands,  
T-Shirts, Reeds, Drums and Waving Cats.**

**Sell-Buy-Exchange**

Records, LPs, 45s, 78s, Vinyl, CDs, Guitars, Amps.

Come and see us with your music related items.

**We also repair and fix.**

*"One of the most  
fun record shops  
in the galaxy!"*



**ALL GENRES OF RECORDS SOLD  
We buy, sell and trade vinyl  
Record collections bought**

**10a St Michael's Estate, Bridport, DT6 3RR  
Open 10am till 4.30pm Monday to Saturday**

[clocktowerrecords.co.uk](http://clocktowerrecords.co.uk)  
[thecrew@clocktowerrecords.co.uk](mailto:thecrew@clocktowerrecords.co.uk) • 01308 458077



**Bridport Leisure Centre** offers a wide range of recreational facilities and activities for all the family including swimming, fitness classes, and sports activities.

Tel: 01308 489464 [www.bridportleisure.com](http://www.bridportleisure.com)

**Highlands End Leisure Club** has a swimming pool, sauna, steam room, gym, tennis court and nine-hole pitch and putt. Tel: 01308 422139/422139 or [enquiries@wdlh.co.uk](mailto:enquiries@wdlh.co.uk)  
[www.highlandsendholidaypark.co.uk/leisure-club](http://www.highlandsendholidaypark.co.uk/leisure-club)

**Jurassic Fun Centre at Freshwater Beach Holiday Park\*** has a swimming pool with slides, sauna, steam room, hot tub and 10-pin bowling. [www.jurassicfuncentre.co.uk](http://www.jurassicfuncentre.co.uk)  
\* Closed to non-residents from the end of July to the end of August.

### **Bridport Football Club**

The home of the "Bees" – St Mary's Stadium, Skilling Hill Road DT6 5LA. First Team, Reserves, West Dorset Veterans and Youth Ladies. [www.bridportfc.co.uk](http://www.bridportfc.co.uk)

### **Bridport Youth Football Club**

St Mary's Playing Field [www.facebook.com/bridportyouthfc](http://www.facebook.com/bridportyouthfc) 14 teams playing in the FA Mini Soccer leagues and Dorset Youth Football League. Age groups range from Under 7 to Under 17. Provide regular football in a safe environment for over 200 players.

### **Bridport Rugby Club**

Bridport Leisure Centre, Skilling Hill Road, DT6 5LN Tel: 01308 427464

[www.bridportrugbyclub.co.uk](http://www.bridportrugbyclub.co.uk)

Seniors' 1st XV (There is occasionally a Vets side): Training is held Wednesday evening 19.00 – 21.00 at Bridport Leisure Centre

Juniors: the club has teams and training sessions for all age groups beginning at under 6 through to colt level. Training/matches on Sunday from 10am – 12 noon for all ages.

Contact Club Chairman: Julian Hussey on 07836 371029 [julian@funeraldirectors.uk.com](mailto:julian@funeraldirectors.uk.com)

### **West Dorset Hawks Hockey Club**

Two men teams age 21 years upwards. Training takes place from end of August to end of season on Tuesday evenings at the Sir John Colfox School 7.30 – 9pm with EHA qualified coaches. [www.westdorsethc.co.uk](http://www.westdorsethc.co.uk)



**bridport**  
leisure centre

# CHILDREN'S ACTIVITIES

## at Bridport Leisure Centre

Discover the exciting range of children's activities on offer at Bridport Leisure Centre!

Whether you are looking for something to do on a rainy day, or are starting your child's swimming journey, following the swim England framework, we have something everyone.

Bridport Leisure Centre, Brewery Fields, Bridport, Dorset DT6 5LN  
Tel: (01308) 427464 [www.bridportleisure.com](http://www.bridportleisure.com)

### **Bridport Tennis Club**

Situated on the Plottingham Playing Fields. The club has all year-round coaching, tournaments and competes in the Yeovil & District Lawn Tennis League on four all-weather courts, two of which are floodlit. Junior section, under 13s and under 16s are coached by LTA Qualified coach. Courts available for public hire. Tennis Court bookings via Bridport Sports Shop, East Street. Tel: 01308 427432 [www.bridporttennis.org.uk](http://www.bridporttennis.org.uk)

### **The Hyde Real Tennis Court**

Open daily from 9.00am Walditch DT6 4LB [www.hyderealtennis.co.uk](http://www.hyderealtennis.co.uk) 01308 420777  
The Hyde Real Tennis Court was originally built in 1884. It was renovated to its former glory in 1998 and is now probably one of the finest examples of a Real Tennis Court in the world. The court is available to anyone and everyone. You don't have to be a member or a regular player. To book, simply drop in at the Court or contact Bridport TIC (01308 424901) to reserve your playing time. Lessons are available from the Professional.

### **Bridport and West Dorset Golf Club**

Burton Road, DT6 4PS Tel: 01308 421095 [www.bridportgolfclub.co.uk](http://www.bridportgolfclub.co.uk)

Situated on East Cliff since 1911, Bridport and West Dorset Golf Club has been an 18-hole course since 1921. The views inland take in Pilsdon Pen and Lewesdon Hill – the two highest points in Dorset, or you are overlooking the shore. The signature 6th hole has been voted in the top 50 par 3s in GB and Ireland. A challenging course coupled with a variable wind and everchanging weather, all levels of golfers are sure to be tested when playing this magnificent course.

## Bridport Bowling Club

A thriving outdoor bowls club within a 5-minute walk of the town centre. The club competes in a number of county leagues and national competitions, as well as having a comprehensive schedule of club games, club competitions and friendly games against other local clubs and touring sides. For touring sides Bridport Bowls club provides an excellent venue, with a maximum of eight rinks and a large clubhouse with bar and full kitchen. [www.bridportbowlingclub.org.uk](http://www.bridportbowlingclub.org.uk)

## Bridport Runners

A running club with 50 members of all ages (17+) and abilities. They run on all terrains, over all distances (from 5k to Ultra) and year-round, meeting twice a week: Wednesdays (6.00 pm, car park of Bee's football stadium) Sundays (9.00 am, West Bay, in the station car park next to The West Bay Hotel). They are affiliated with UK Athletics and take part in and organise its own running events such as "The CapTEN", a ten mile fell run taking in Thorncombe Beacon and Golden Cap, starting and finishing at Seatown in May. More information is available from [bridportrunnerssecretary@hotmail.com](mailto:bridportrunnerssecretary@hotmail.com) or Facebook.

## Water Sports at West Bay

For a variety of water sports, such as canoeing, kayaking and Gig rowing, see page 27.

## Swimming

**Bridport Leisure Centre** has a 25-metre, six-lane main pool and 12-metre teaching pool. Both are edged by floor-to-ceiling windows, filling the space with natural light and countryside views. 01308 427464 [www.bridportleisure.com](http://www.bridportleisure.com)

**Freshwater Beach Holiday Park\*** has three swimming pools. For adults there is the main swimming pool which has a safe 1.1m constant depth; or for the children (and adults that should know better), they have the fun swimming pool with water slides, water cannons and other apparatus to enjoy. There is also an infant swimming pool for parents and their little ones. All children must be accompanied by an adult.

\* Closed to non-residents from the end of July to the end of August.

[www.jurassicfuncentre.co.uk](http://www.jurassicfuncentre.co.uk)

**Highlands End Holiday Park** has a 20 m heated swimming pool, sauna and hot tub. The swimming pool is open daily (opening times may vary). Children aged 15-18 years may swim unsupervised when a consent form has been filled in at the Leisure Club Reception; children under 16 may not swim without supervision from an adult. [www.highlandsendleisureclub.co.uk](http://www.highlandsendleisureclub.co.uk)

## Ten Pin Bowling

Available at Freshwater Beach Holiday Park\* There are six full-sized American bowling lanes to enjoy. [www.jurassicfuncentre.co.uk](http://www.jurassicfuncentre.co.uk)

\* Closed to non-residents from the end of July to the end of August.



**JURASSIC FUN CENTRE**

# MONSTER FUN

WHERE DULL DAYS ARE EXTINCT

...WHATEVER THE WEATHER

- Ten-Pin Bowling
- Swimming Pools
- Fun Pools
- Sauna & Steam Rooms
- Gym and so much more

[JURASSICFUNCENTRE.CO.UK](http://JURASSICFUNCENTRE.CO.UK)

At Freshwater Beach Holiday Park, Burton Bradstock, Bridport, DT6 4PT. Telephone: 01308 897 317

Please quote Ref: TG

## Dance Schools

### Lyric School of Dancing

Ballet and tap dancing for all ages 3 years to adult, and also line dancing. Up to date information available on Facebook. [teresagrinter45@gmail.com](mailto:teresagrinter45@gmail.com)

### Perfect Pirouettes

Adult and children's Jazz and Royal Academy of Dance Ballet classes on Tuesdays, Wednesdays and Thursdays at Bridport Leisure Centre. Up to date information on Facebook. [joanneperfect@aol.com](mailto:joanneperfect@aol.com)

### Bridport Youth Dance

Dance classes for ages 5 - 21 years and workshops with leading teachers and choreographers from across the UK. Led by dance teacher and choreographer Nikki Northover, Bridport Youth Dance consists of Bridport Boys Dance group, Summer Dance Scene and an exceptional annual production is held in Bridport. [www.bridportyouthdance.org.uk](http://www.bridportyouthdance.org.uk)

### Kelci Dance Academy

Offering a wide range of dance and fitness classes for adults and children. Up to date information on Facebook.

### Bridport Folk Dance Club

Meet regularly on a Monday evening at 7.15 - 9.30 pm in the WI Hall to enjoy traditional folk dancing. All welcome. Call 01308 458165/459001



**Bridport Gig Rowing Club**

For more detail see West Bay section on page 27 [www.bridportgigclub.org](http://www.bridportgigclub.org)

**Bridport Cycling Club** Manor Yard, Symondsburry DT6 6HG.

For all levels from beginners to competition. All ages welcome. Organised road and mountain bike rides. On site cycle trails. 8km cross country loop. Mountain bike downhill tracks. Dirt jumps. On site coffee shop and restaurant. Toilets. Free parking. Road ride every Thursday at 10.30am and Sunday at 9.00am. Off-road rides Wednesday at 10:30am [www.bridportcycles.co.uk/club](http://www.bridportcycles.co.uk/club)

**Bridport Amateur Boxing Club**

Held at Bridport Youth and Community Centre, Gundry Lane DT6 3LR. Coaching is available for complete beginners to experienced active boxers. Contact Alan Slaney on 01308 425108

**Bridport Evolution Basketball Club**

Under 12s, Under 14s, Under 16s and Seniors. More details available on Facebook.

## Skateboarding, BMX and Inline Skating

**Bridport Skate Park** – Plottingham Playing Field

**2020 Skate Park** – Unit 2A Corbin Way Gore Cross Trading Estate, Bridport, DT6 3UX  
Bookings for skateboards, Quad, Inline, BMX and Scooter on Facebook.

## Horse Riding

**Bidlake Riding School** Broadoak [www.bidlakestables.co.uk](http://www.bidlakestables.co.uk)

**Hobby Farm & Equestrian** Whitchurch Canonorum, DT6 6RJ  
[www.hobbyfarmequestriandorset.co.uk](http://www.hobbyfarmequestriandorset.co.uk)

## Climbing

**Rockburn Climbing (Bouldering) Centre** Priory Lane DT6 3RW

New and experienced climbers welcome. The facility currently comprises of 75 linear metres of bouldering up to 4.5m, a climbing-focussed gym area and the Rock Café.

[www.rockburn-bridport.com](http://www.rockburn-bridport.com)

## Walking and Rambling

There are many circular walks through the countryside surrounding Bridport and West Bay. With spectacular views and diverse wildlife. It is the best way to appreciate the wonderful views of the Jurassic Coast. The Green Route around the Town can be downloaded from [www.bridportandwestbay.co.uk](http://www.bridportandwestbay.co.uk) or visit the Bridport Tourist Information centre for maps and detail.

**Bridport and West Bay Rambling Club** 01308 898484

With one secondary school, three town primary schools, five village primary schools in the area and numerous pre-schools and nurseries, Bridport has an active family community. There are activities and support groups from antenatal, through to toddlers, pre-schoolers, children and young adults.

**The Children's Centre** in Skilling is a fantastic resource and a first port of call for all parents to be and parents of young children.

The **Bridport Youth and Community Centre** in Gundry Lane hosts a variety of activities for young people including four weekly youth clubs (see page 58 for details). Additional activities are available during school holidays. The Bridport Library also provides free activities during the school holidays.

Blessed with the beautiful **Jurassic coast** and surrounding rolling hills there is plenty for families to do in the great outdoors. There are miles of beautiful walks in and around Bridport and West Bay: Coneygar Hill, Wooton Hill, Colmer's Hill, Asker Meadows or simply walk from Bridport to West Bay through the fields and follow the coastal paths to Burton Bradstock to the East or Eype and Seatown to the West. If you prefer to cycle, the cycle routes in the area are improving all the time. The Bridport Tourist Information Centre has route maps for both walkers and cyclists. For the more adventurous cyclists, Symondsburry Estate has a mountain bike trail and, for the real dare devils there is Plottingham Skateboard and BMX Park.

The beaches of West Bay, Burton Bradstock, Eype, Seatown and Charmouth, all offer a fantastic opportunity for fossil hunting, fishing and crabbing, as well as water sports, building sandcastles and taking a dip in the sea. The nearby Charmouth Heritage Coast Centre and Abbotsbury Swannery are great places to go for family days out. Other local activity venues to enjoy are the Bridport Leisure Centre, the Jurassic Fun Centre at Freshwater Beach Holiday Park and Bridport and West Bay Golf Club. The Town Council manages parks and open spaces around the town including Plottingham Skate Park, St Mary's Multi Use Games Arena and the wonderful West Bay Play area which in 2016 was extended to include an area for inclusive play so that everyone of all ages and abilities can play together.

## Supporting Services

**Bridport Youth and Community Centre** Gundry Lane, DT6 3RL 01308 422009

The Centre aims to provide a positive environment for young people to learn and play, offering experiences that support them to achieve their potential and to help them lead healthy, safe and fulfilling lives. It also provides meeting and activity space for a wide range of local community groups. [www.bridportycc.com](http://www.bridportycc.com)

## Bridport Youth Clubs

**Bridport Youth & Community Centre** Gundry Lane, DT6 3RL 01308 422009

Four youth club sessions are held per week:

**Swifts Junior Youth Club** - Years 3, 4, 5, 6 & 7 Wednesdays 5pm - 7pm

**Tigers Middle Youth Club** - Years 5, 6, 7 & 8 Fridays 5pm - 7pm

**Xtreme Senior Youth Club** - Years 9, 10, 11, 12 & 13 Wednesdays 7:30pm - 9pm and Fridays 7:30pm - 9:30pm. Outreach & C-card Clinic also operate during these clubs.

The youth clubs provide a safe space for local young people, including those from rural areas. Each session offers a range of different type of activities – arts sessions with local artists, crafts, various sports, music room, recording studio, pool room and tuck shop. More activities during the summer.

**Bridport Bandits** A motor and grass track racing club for the over 11s. Learn how to rebuild a car, about car mechanics and how to drive! Monday & Thursday 7pm - 9pm. Contact John 07837 926702

**Supastrikers** Football Fun 2 - 7 Years Thursdays 3:55pm - 4:40pm 4:50pm - 5:35pm Saturdays 9:00am - 9:45am. FB supastrikersbridport supastrikers.bridport@gmail.com

**Ascape** is a charity supporting young Autistic and socially anxious young people 0-25 years and their families. Activities include gardening club, YouDoMusic Teen workshops. [www.ascape.club](http://www.ascape.club)

**Bridport Boxing Club** Open to all over 10 years old. Tuesdays & Thursdays 6:00pm - 7:30pm, Sundays 10:30am - 12pm. Contact Alan 01308 425108 or follow on Facebook

**Sasquatch Studios Bridport** provide affordable group-based Brazilian Jiu-Jitsu training in a safe & enjoyable environment for ages 14+. [www.sasquatchstudiosbridport.com](http://www.sasquatchstudiosbridport.com)

**Bridport Young Persons' Action Trust (BYPAT)** is a charity that supports disadvantaged young people in the area. It's by line is "*Helping Young People to Achieve What They Might Not Otherwise Achieve.*" They work with partners to develop facilities/resources that have been identified as being needed within the community: the latest example is the West Bay Play Area development where they partnered with the Town Council to provide an area that can be used by the able bodied and those with disability side by side. BYPAT also runs the Japanese Exchange Programme established in 1996, which is organised in partnership with Tokyo's Koyamadai Educational Foundation. Contact 01308 423767 or a.c.woodgate@btinternet.com

**The ASPIRE Project** focuses on supporting those facing mental health issues, working with the younger age group within the Sir John Colfox Academy and, in partnership with local charity BYPAT (Bridport Young Persons Action Trust) in a town centre location with young people who do not attend school. ASPIRE also works with an older age group in partnership with the NHS START – Support, Transition and Recovery Team. Contact 01308 423767 or a.c.woodgate@btinternet.com

**Bridport Youth Performers (BYP)** is a youth theatre group for young performers aged 25 and under. BYP offers opportunities throughout the year in Musical Theatre, Acting Dance and Singing including workshops, community events and, of course, their Christmas musical! It is local charity that raises funds for talented young locals to use for performance tuition whether local classes or national Drama Institutes. info@byps.co.uk Facebook @bridportyoungperformers

## Youth Activities

**B-Sharp** is a charity that organises workshops, performances and training for young people so they can play music together, progress their skills and have fun doing it! [www.bsharp.org.uk](http://www.bsharp.org.uk) info@bsharp.org.uk 07947 334138

**Bridport Boombox** Junior Music Club for ages 8-11 to develop their musical skills and start creating and playing music together. Wednesday afternoons at Sir John Colfox School from 3.45pm - 5.00pm term time.

**Bridport Youth Dance** runs dance classes for ages 5-21 years in the town. Visit website for timetable and venue details. Led by Nikki Northover, Bridport Youth Dance consists of Bridport Boys Dance group, Summer Dance Scene, tap dance company 'Tapistory' and also run an exceptional annual performance. [www.bridportyouthdance.org.uk](http://www.bridportyouthdance.org.uk) 07765 971357

**Bridport Musical Theatre** (see page 49) 14 years +. Contact Laura 01308 422708

**Bridport Amateur Boxing Club** 9 years +. Gundry Lane, DT6 3RL Contact Alan Slaney 01308 425108

## Bridport Cubs, Scouts, Brownies & Guides

**Scouts** Contact Mrs Amanda Timbrell 01308 423025 [amandatimbrellgsl@gmail.com](mailto:amandatimbrellgsl@gmail.com)

**Guides** [www.girlguiding-dorset.org.uk](http://www.girlguiding-dorset.org.uk)

**1st Bridport Brownies** Contact Ms F. McKenzie [cllrfmfkmckenzie28@gmail.com](mailto:cllrfmfkmckenzie28@gmail.com)

**1st & 2nd Bothenhampton Brownies** Contact 07463 591085

**1st West Bay Sea Scouts** (see page 28).

**Bridport Army Cadets** Contact Lt Julian Perry 636langla@armymail.mod.uk 07758 441990 [www.bridportandwestbay.co.uk](http://www.bridportandwestbay.co.uk)

**Sea Cadets** (see page 28)

## Bridport St John Ambulance Youth

Contact Kevin Chappuis SBStJ FRIPH [kevin.chappuis@sja.org.uk](mailto:kevin.chappuis@sja.org.uk)



## Secondary School

**Sir John Colfox Academy** (11-18 years) Tel: 01308 422291 [www.colfox.org](http://www.colfox.org)

## Primary Schools

**Bridport Primary School** St Andrews Road Tel: 01308 422846

[www.bridport.dorset.sch.uk](http://www.bridport.dorset.sch.uk)

**Bridport St Mary's CE VC Primary School** Skilling Hill Road Tel: 01308 423065

[www.stmarybridport.co.uk](http://www.stmarybridport.co.uk)

**St Catherine's RTC Primary School** Pymore Road Tel: 01308 423568

[www.stcatherinesbridport.dorset.sch.uk](http://www.stcatherinesbridport.dorset.sch.uk)

## Pre-Schools

**Bradpole Pre-School** Ridgeway Tel: 01308 456668 [www.bradpolepreschool.org.uk](http://www.bradpolepreschool.org.uk)

**St Andrew's Pre-School** St Andrews Road Tel: 01308 458151

[www.standrews-preschool.org.uk](http://www.standrews-preschool.org.uk)

**St Catherine's Pre-School** St Catherine's School, Pymore Road Tel: 01308 424441

[www.stcatherinespreschool.org.uk](http://www.stcatherinespreschool.org.uk)

**Bridport St Mary's Pre-School** Skilling Hill Road Tel: 01308 423065

[www.stmarybridport.co.uk](http://www.stmarybridport.co.uk)

**St Ronan's Pre-School** King's Square, East Street Tel: 01308 422128

[www.stronanspreschool.co.uk](http://www.stronanspreschool.co.uk)

**Stepping Stones Pre-School** United Church, East Street Tel: 07458 304685

**Bridport Montessori School** East Street Tel: 01308 456362

## Playgroups

**Sunny Day Nursery** King's Square, East Street [www.sunnydays.co.uk/bridport](http://www.sunnydays.co.uk/bridport)

**Wonderland Day Nursery** Gundry Lane Tel: 01308 421731

[www.wonderlanddaynurserypreschoolbridport.com](http://www.wonderlanddaynurserypreschoolbridport.com)

## Supporting Services

**Bridport Children's Centre** St Marys Primary School, Skilling Hill Road

Tel: 01308 425241 [bridportcc@dorsetcc.gov.uk](mailto:bridportcc@dorsetcc.gov.uk)

[www.dorsetcouncil.gov.uk/-/bridport-childrens-centre](http://www.dorsetcouncil.gov.uk/-/bridport-childrens-centre)

**Bridport Youth and Community Centre** Gundry Lane Tel: 01308 422009

[www.bridportycc.com](http://www.bridportycc.com)

**Local Food Links** Unit 17, St Michaels Trading Estate Tel: 01308 420269

[www.localfoodlinks.org.uk](http://www.localfoodlinks.org.uk)

## Adult Education in Bridport

**Skills Training Bridport** is a small community run job club held in the Bridport library on Tuesday afternoons from 2-4pm. Help is given to job seekers/job improvers – updating CVs, looking for jobs, help with interview skills and general motivation. [skillstrainingbridport@gmail.com](mailto:skillstrainingbridport@gmail.com)

**Bridport Enterprise Supporting Training Ltd (BEST)** is a voluntary non-profit making organisation. BEST provides free training, guidance and practical support to the unemployed and those considering a change of direction in their working lives. Tel: 01308 252600 or [a.c.woodgate@btinternet.com](mailto:a.c.woodgate@btinternet.com)

## Adult Community Services

**Sydney Gales Care Residential Care** Flood Lane, Bridport DT6 3QG

Tel: 01308 423782 Run by Care Dorset [www.caredorset.co.uk](http://www.caredorset.co.uk)

**Bridport Connect** is a day centre service managed by Care Dorset, dedicated to supporting people with learning and physical disabilities, those with mental health needs and older people. St Andrew's Road, Bridport, Dorset DT6 3BJ Tel: 01308 422666

**Bridport Disabled, Carers and Friends Club** meet every Thursday between 9am-12noon at Vernon's Court, Community Room, South Street DT6 3QF. There are no collections and plenty of tea and coffee for all! Help is on hand for benefit advice and monthly chiropody sessions. Wheelchair access and facilities. Just call in for a chat or advice in a friendly atmosphere. All are welcome. Tel: 01308 423620/421213

**Bridport Social Services** Bridport Community Hospital, Hospital Lane, North Allington DT6 5DR Tel: 01308 422234

**Bridport and District Citizens Advice** provide free impartial advice on any subject, including welfare benefits, employment, consumer problems, housing issues, relationship problems, debt and legal matters. 45 South Street, DT6 3NY Tel: 0800 1448848 [advice@bridport-cab.org.uk](mailto:advice@bridport-cab.org.uk) [www.bridportca.org.uk](http://www.bridportca.org.uk)

**Bridport Job Centre** 1 West St, Bridport DT6 3QJ Find latest jobs, administer claims Jobseeker's Allowance, Incapacity Benefit, Employment and Support Allowance and Income Support. [www.jobcentreguide.co.uk/bridport-jobcentre](http://www.jobcentreguide.co.uk/bridport-jobcentre)

# An Enterprising Place to do Business



Bridport and West Bay and the surrounding villages are fortunate to have a flourishing and varied business community. Farming, food production, the rope making industry and tourism are still very much the backbone of the economy, but alongside there are some exciting and innovative newcomers.

St Michael's Trading Estate is the home of a truly eclectic mix of over 130 traders offering a mix of skills, products and services, including a milliner, a stonemason, carpentry and furniture making, bathrooms, furniture sales, jewellers, wine merchant, banner maker, wax sculptor, hairdresser and so the lists goes on.

It has built a well-deserved reputation for its Arts & Vintage quarter, which boasts a unique variety of portrait and landscape artists and a range of dealers with extensive stocks of antique and reclaimed furniture, which has become a major draw for visitors.

Other Trading Estates in the town and surrounding area:

- Crepe Farm Business Park, Symondsbur
- Dreadnought Trading Estate
- Gore Cross Business Park
- North Mills Trading Estate
- Pineapple Business Park, Salway Ash
- Pymore Mills Industrial Estate, Pymore
- St Andrews Trading Estate
- The Old Laundry Trading Estate

*For all your printing needs Creeds are your local solution!*

Serving the South West & further afield for over 65 years.

For creative design and print ideas for your next project, however big or small - contact us today.



www.creedsuk.com office@creedsuk.com 01308 423411  
9c Corbin Way, Gore Cross Business Park, Bridport DT6 3UX



## Bridport Business – The Chamber of Trade and Commerce

The Chamber represents and works in partnership with the local business community and other authorities and agencies, to promote the town, and increase the prosperity of their members. The Chamber has around 70 members who meet on the second Tuesday of every month to discuss a wide range of subjects and to voice their concerns in an open and supportive environment.  
[www.bridportbusiness.org.uk](http://www.bridportbusiness.org.uk)



Helping you get more from your business

- Business start ups
- Sole trader and Partnership accounts
- Management accounts
- Self assessment tax returns
- Company accounts and tax returns
- Business advice and support
- Cash flow forecasting and budgets
- Business and Personal Tax planning

Free, no obligation initial consultation

Chartered Certified Accountants based in Dorset delivering proactive accountancy, taxation and strategic advice to owner managed businesses and private clients.

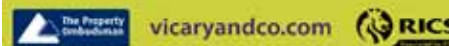
t 01308 538120  
e info@hartleysaccountants.co.uk  
w www.hartleysaccountants.co.uk

First Floor, 67B East Street, Bridport, Dorset, DT6 3LB

**Vicary & Co**  
Chartered Surveyors & Property Agents  
Sales & Lettings  
Your Local Independent Agent

Book your FREE market appraisal today!

01308 459550  
12a South Street, Bridport, DT6 3NQ



**Wessex Surveyors**

Chartered Surveyors covering residential, commercial and rural property matters across the Wessex Region

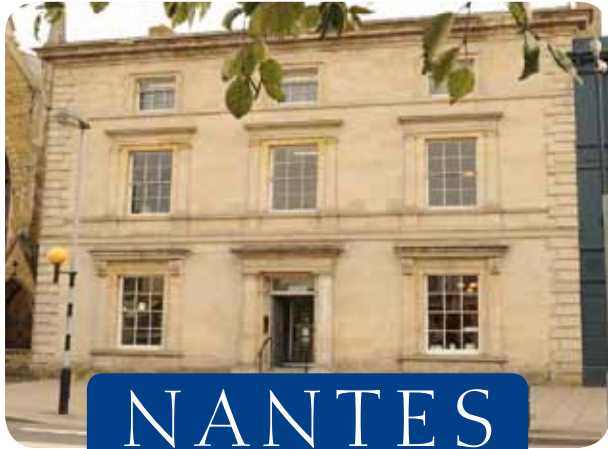
01308 426471

12a South Street, Bridport, DT6 3NQ  
wessexsurveyors.co.uk





# LEGAL ADVICE IN PLAIN ENGLISH



**NANTES**  
*Solicitors & Notaries*

**Bridport, Dorchester, Portland & Weymouth**

**01308 422313 • [www.nantes.co.uk](http://www.nantes.co.uk)**



## BRIDPORT'S AWARD WINNING GARDEN CENTRE AND RESTAURANT



Find us on the Crown Roundabout where  
West Bay Road meets the A35  
[grovesnurseries.co.uk](http://grovesnurseries.co.uk)

West Bay Road  
Bridport, DT6 4BA  
01308 422654

**HUSSEY &  
BRIGGS**

[www.husseyandbriggs.co.uk](http://www.husseyandbriggs.co.uk)



Awnings Windows Doors Conservatories

21 Dreadnought Trading Estate, Bridport DT6 SBU  
t. 01308 422366

Lantern House, Crown Square, Poundbury DT6 3DY  
t. 01305 269449

**PORTER  
DODSON**

Commercial and Private Law

We do more than  
offer a range  
of options.

We provide a **clear**  
sense of direction.

21 South Street  
Bridport  
DT6 3NR

[porterodson.co.uk](http://porterodson.co.uk)

# MAC BUILDING CONTRACTORS LTD

**New Build • Fitted Kitchens & Bathrooms  
Listed Building Specialist • Renovations  
Decorating • Roofing & GRP  
Plumbing and Heating**

*For a professional, friendly and efficient service*

**BESPOKE JOINERY SPECIALISTS**  
All created and assembled in our own workshop  
Paddocks Farm, Broadoak, Bridport, DT6 5NR

**Tel: 01308 458 297**  
www.macbuilding.co.uk • macbuilding@btconnect.com

# TOPSPARKS UK LTD

Electrical, Plumbing & Heating Contractor

**Domestic, Commercial & Industrial  
Electrical Contractors**

**Plumbing & Heating Contractors  
Bathroom & Kitchen Fitting  
Tiling • Gas Safety checks  
Boiler Service & Repair**

**01308 420831**  
www.topsparks.com | info@topsparks.biz

3-5 East Road Business Park,  
East Road, Bridport, DT6 4RZ

# HUCK

**Proud to Work, Rest & Play in Bridport!**

**Huck Nets (UK) is the UK's largest manufacturer and supplier of netting products**

The company includes Bridport based, Edwards Sports, manufacturer of sports netting since 1884, and William James & Co, manufacturers and suppliers of garden netting since 1954.

We have supplied our football nets to Bridport FC for many years.

West Bay's innovative natural play area. Researched and specified by local children... Designed, supplied and built by Huck.

**Sport | Industrial | Safety | Play | Bird & Pest Control | Gardens and More...**

**01308 425100 | www.huck-net.co.uk**  
Gore Cross Business Park, Corbin Way, Bridport, Dorset DT6 3UX

# A. G. DOWN

TRUSTED LOCAL FUNERAL DIRECTORS & MONUMENTAL MASONS

**Welcoming the third generation of our family**

A. G. Down was established by Arthur Down on his return from World War 2 and sold to Eric Dunford in 1979. Eric was joined by his wife, Joyce, in 1985 and they were joined by her son, Julian Hussey in the early nineties, who had been working in the Funeral Profession in various parts of the country.

Julian and Karen met whilst studying to become members of the British Institute of Embalmers, as she was working as a Funeral Director in Hampshire at the time. They married in 1995 and, once their children, Jasmine and George were in full time education, Karen joined the firm on a full time basis.

Jasmine joined the family business on a full time basis in December 2022 having been part time for a number of years, latterly while also working with the Melplash Show team in Bridport. Jasmine gained her IOSH Managing Safely Certificate with the British Safety Council and oversees Health & Safety across all six Funeral Homes, as well as administration within both the funeral and memorial businesses. She is currently studying for her Certificate in Funeral Arranging and Administration.

Having worked with the family for a year and a half, George then spent a year expanding his experience working for a well-respected Funeral and Repatriation Company in Croydon. He rejoined the family business in July 2022 and gained his Diploma in Funeral Directing in December 2022.

*"We are delighted that George and Jasmine have joined the business as the third generation; all working together to ensure that our family continues to care for your family into the future."*

**66 South Street, Bridport • 01308 422643 • www.funeraldirectors.uk.com**  
*Also in Dorchester, Axminster, Seaton, Honiton & Ottery St. Mary*

# Battens

SOLICITORS

**Our experience, your future**

16 West Street,  
Bridport,  
DT6 3QP  
01308 800524  
www.battens.co.uk





Bridport Town Council works in partnership with other agencies and community bodies to ensure that Bridport is a thriving community and a healthy, vibrant, and attractive place in which to work, live and visit. We work collaboratively, through a committed team of councillors and officers, and a range of external strategic partners.

Among the services we offer are:

- Allotments
- Community Grants and Funding
- Beach Wheelchairs
- Community Groups Support
- Buildings and Venue Hire
- Markets
- Cemetery
- Parks, Play Areas & Open Space
- Charity Collection Licences
- Sitting Out Licences
- Civic and Mayoral Events
- Tourist Information Centre
- Community Bus
- Verge Maintenance
- Community Events
- West Bay Car Boot Sale

The Council also carries out individual projects, such as creating the Bridport Sculpture Trail, Bridport Energy Champions, the Changing Places toilet facility, murals, and our solar car ports.

The Town Council has significant property ownership across Bridport and West Bay, including buildings, open spaces, parks, and play areas.

Our 18 councillors are elected by the local community and guide the work of the Council. They are organised into committees that focus on the key areas of work and statutory responsibilities, and their decisions, made at some 70 formal meetings per year, are implemented by the team of 25 employees. Members of the public are welcome to attend and speak at our meetings, and you can find the annual calendar on our website at [www.bridport-tc.gov.uk](http://www.bridport-tc.gov.uk)

Our website also includes detailed information on all aspects of our work.



Councillors are from a variety of backgrounds, and the current cohort includes people with expertise in education, the environment, finance, health, and heritage matters. Councillors are volunteers, giving their time freely to attend meetings, deal with constituents' queries, carry out background research, and assist with community events and activities.

The town's Mayor and Deputy Mayor are elected annually from the sitting councillors and carry out civic duties on behalf of Bridport.

The calendar of Town Council meetings is published on [www.bridport-tc.gov.uk](http://www.bridport-tc.gov.uk) Councillor contacts, service and venue hire information is also available on the website.

The Council works to an overall plan covering the four or five-year term of the councillors. This is underpinned by a range of strategies and policies for specific issues such as access and movement, the climate emergency, inward investment, and neighbourhood planning.

From April 2024, the council area will expand to include the settlements of Allington, Bothenhampton, Bradpole and Walditch, whereas prior to that date our parish consisted only of central Bridport, and West Bay.

Our friendly team is available to help, at:

**Bridport Town Council**, Mountfield, Rax Lane, Bridport, Dorset DT6 3JP. This is the Council's administrative base and includes a public reception for enquiries.

- Tel: 01308 456722 Email: [enquiries@bridport-tc.gov.uk](mailto:enquiries@bridport-tc.gov.uk) [www.bridport-tc.gov.uk](http://www.bridport-tc.gov.uk)
- The offices are open Monday to Thursday 9.00am–5pm and Friday 9.00am–4.30pm.

**Bridport Tourist Information Centre (TIC)** Bucky Doo Square, South Street, DT6 3LF. The TIC is a key service, helping to promote Bridport and West Bay and providing information for both visitors and local residents. It is the central hub for event information and ticketing.

- Tel: 01308 424901 Email: [bridport.tic@bridport-tc.gov.uk](mailto:bridport.tic@bridport-tc.gov.uk) [www.bridportandwestbay.co.uk](http://www.bridportandwestbay.co.uk)
- The TIC is open Monday to Saturday 9.00am to 5.00pm (April to October) and 10.00am to 3.00pm (November to March).

**Dorset Council** services include Council Tax and Council Tax Support, Housing, Housing Benefits, Homelessness, Car Parks, Blue Badges, Dog Warden, Planning, Education, Social Care, Libraries, Arts and Culture, Transport, Roads and Pavements, Refuse Collection and Disposal, Recycling, and Litter.

Dorset Council, County Hall, Colliton Park, Dorchester DT1 1XJ Tel: 01305 221000  
[www.dorsetcouncil.gov.uk](http://www.dorsetcouncil.gov.uk) Email: customerservices@dorsetcouncil.gov.uk.  
There is a Bridport Area Desk based in Bridport Library.

**Bridport Recycling Centre** Broomhills Nursery, West Bay Fields, DT6 5LB  
Open daily: 1 October - 31 March 10am to 4pm. 1 April - 30 September 9am to 6pm.  
Closed Christmas Day, Boxing Day and New Year's Day. [www.dorsetcouncil.gov.uk](http://www.dorsetcouncil.gov.uk)  
01305 221040

### **Bridport St Vaast-La-Hougue Twinning Association**

St Vaast is a working fishing port in unspoilt Nord Cotentin in France. The Association visits St Vaast and hosts return visits on alternate years. Each year they pay for two bursaries for local students to go to St Vaast on an exchange visit. The Association meet bi-monthly in the West Dorset Club for French lessons led by a native French speaker. Secretary: Linda Bullock 01308 425664 Email: lindabtd6@aol.com  
[www.bridport-and-saint-vaast-twinning-association.org.uk](http://www.bridport-and-saint-vaast-twinning-association.org.uk)

### **The Rifles – Freedom of the Town of Bridport**

The Rifles was formed on 1st February 2007 from an amalgamation of four famous regiments: The Devon and Dorsets, the Royal Gloucestershire Berkshire and Wiltshires, the Light Infantry and the Royal Green Jackets. The new Regiment consists of five Regular and two Territorial Battalions. The Regiment maintains close ties with Bridport. It was awarded the Freedom of the Town in 2011 and exercised its right to parade in the town in June 2014. A number of traditions mark the Rifles out when they are on parade – they march noticeably faster than other Army units and carry nothing which would reduce their speed; carry a badge on their belts which represents the colours; drums are replaced by more practical bugles and the Rifles wear Green.



### **Community fundraising Groups**

**Bridport Round Table** Group of local men aged 18-45 years who raise funds for local groups, charities and good causes. FB @Bridport Round Table

**Bridport Ladies Circle** A group of local ladies, aged 18-45 years, who raise funds for local and global causes. FB @Bridport Ladies Circle

**Rotary Club of Bridport** Open to men and women. Meet at Bridport & West Dorset Golf Club. FB @Rotary Club of Bridport

**Rotary Club of Brit Valley** Including Bridport, West Bay, Beaminster and Bride Valley. Open to men and women. Meet at Haddon House, West Bay. FB @Rotary Club of Brit Valley

### **Bridport Lions Club**

A local charity and part of the larger Lions Club International, serving towns and villages from Lyme Regis to the west to Beaminster in the north and Abbotsbury to the east. Meetings held at Haddon House, West Bay. [www.bridportlionsclub.org.uk](http://www.bridportlionsclub.org.uk)

### **Bridport Local Area Partnership (BLAP)**

A partnership of ten local parish councils and more than one hundred local organisations and individuals, that works together to represent the wider area on issues of shared interest. Tel: 01308 456722

[www.bridport-tc.gov.uk/projects/bridport-local-area-partnership](http://www.bridport-tc.gov.uk/projects/bridport-local-area-partnership)

### **Local Community Groups in Bridport**

Bridport has over 200 active local community groups covering all interests and issues. You can find contact details either from the Bridport Local Area Partnership (Tel: 01308 456722), which brings all the groups together, or on the community website at [www.bridportandwestbay.co.uk](http://www.bridportandwestbay.co.uk)



<b>Dorset Police</b>	Emergency dial 999 or 112
<b>Bridport Police Station</b> Tannery Road (Not manned after 8pm)	101 – ask for Bridport
<b>Dorset Police HQ</b> <a href="http://www.dorset.police.uk">www.dorset.police.uk</a>	01305 222222
<b>Dorset Fire &amp; Rescue Service</b>	Emergency dial 999 or 112
(Bridport Sea Road South Station, not permanently manned)	
<b>Dorset Fire &amp; Rescue Service HQ &amp; General Enquiries</b>	01305 252600
Admin for Fire Control – bonfires, controlled burns, fire alarm testing	01305 753166
<a href="http://www.dorsetfire.gov.uk">www.dorsetfire.gov.uk</a>	
<b>Dorset Ambulance Service</b>	Emergency dial 999 or 112
<b>Coastguard:</b> (West Bay Station not permanently manned)	Emergency dial 999 or 112

## Doctors

**Bridport Medical Centre** West Allington DT6 5BN 01308 421896 (Out of Hours: 111)  
Opening times: Monday to Friday 8.30am-6.30pm [www.ammonitehealth.co.uk](http://www.ammonitehealth.co.uk)

## Hospitals

**Bridport Community Hospital & Minor Injuries Unit**  
Hospital Lane, North Allington DT6 5DR 01308 422345

**Dorset County Hospital** Williams Avenue, Dorchester DT1 2JY 01305 251150

## Pharmacies

**Boots UK Ltd** 3-5 West Street DT6 3QJ 01308 456167

**Lloyds Pharmacy** Bridport Medical Centre, West Allington DT6 5BN 01308 424350

**Wells Pharmacy** 24 East Street DT6 3LF 01308 422100

## Dentists

**My Dentist Bridport** St Swithins House, North Allington DT6 5DU 01308 426487

**Allington Dental Care** 5 West Allington DT6 5BJ 01308 421919

**Lumley & Wood** 53 East Street DT6 3JX 01308 423120

**Urgent Care Dental Service for Dorset** 0845 701 0401

## Opticians

**Frith Opticians & Audiologists** 7 West Street DT6 3QJ 01308 423000  
[www.frithopticians.co.uk](http://www.frithopticians.co.uk)

**Scrivens** 19 East Street DT6 3JX [www.scrivens.com/branch/bridport-5](http://www.scrivens.com/branch/bridport-5) 01308 423018

**Specsavers** 18 East Street DT6 3LF [www.specsavers.co.uk](http://www.specsavers.co.uk) 01308 455960

## Vets

**Bredy Veterinary Centre** Sea Road North DT6 4RR [www.bredyvets.co.uk](http://www.bredyvets.co.uk) 01308 456771

**Haydon Veterinary Group** Gore Cross Business Park DT6 3UX 01308 456808  
[www.haydonvets.com](http://www.haydonvets.com)

## Defibrillators in Bridport & West Bay

**Bridport Town Hall** South St, Bucky Doo Square, Bridport DT6 3LF 01308 424901

**Beehive Social Club** St. Mary's Field, Skilling Hill Rd, Bridport DT6 5LA 07785 752522

**Waitrose** 42-44 West Street, Bridport DT6 3QP 01308 422252

**Harbourmasters Office** The Mound, West Bay, DT6 4EL 01308 423222 / 07870 240636

## Water Refill

**Water Refill, Bucky Doo Square** Bridport, DT6 3LF

**Water Refill, West Bay Play Area** West Bay Road Car Park, West Bay DT6 4EH

**Water Refill, Plottingham Play Park** Bridport, DT6 5BJ

## Changing Places Toilets

**Changing Places, West Bay Play Area** West Bay Road Car Park, West Bay DT6 4EH

**Changing Places, Bridport Bus Station** Tannery Road, DT6 3TP *Coming September 2023*

## Churches & Faith Groups

**St Mary's Parish Church** South Street [www.bridport-team-ministry.org](http://www.bridport-team-ministry.org) 01308 424747

**St Swithin's Church** North Allington [www.bridport-team-ministry.org](http://www.bridport-team-ministry.org) 01308 426459

**St John's West Bay** [www.bridport-team-ministry.org](http://www.bridport-team-ministry.org) 01308 423013

**Bridport United Church** (Methodist and United Reformed) East Street 01308 459191  
[www.buc.cool](http://www.buc.cool)

**St Mary's and St Catherine's Roman Catholic Church** 36 Victoria Grove  
[www.bridportcatholics.org.uk](http://www.bridportcatholics.org.uk)

**Quakers Meeting House** 95 South Street [www.bridportquakers.org.uk](http://www.bridportquakers.org.uk)

**Chapel in the Garden (Unitarian and Free Christian Chapel)** East Street 01308 422448  
[www.thechapelinthegarden.com](http://www.thechapelinthegarden.com)

**Christian Fellowship** Kings Square, East Street 01305 267176  
[www.bridportchristianfellowship.org](http://www.bridportchristianfellowship.org)

**Chardsmead Baptist Church** Victoria Grove 01308 458478  
[www.bridportbaptistchurch.org](http://www.bridportbaptistchurch.org)

**Jehovah's Witnesses** Kingdom Hall, South Street [www.jw.org](http://www.jw.org) 01308 422900

**Beacon Church** Priory Lane DT6 3RW [www.beaconchurchbridport.co.uk](http://www.beaconchurchbridport.co.uk)

The Christian Science Society, Buddhists and other faith groups also meet in the town.

## Responsible Tourism

Bridport has always been an environmentally conscious town, with deep grounded roots in agriculture and being surrounded by rolling countryside and idyllic coastline it is hard not to be!

As a resident and/or visitor to Bridport we ask that you join us in the Green Fight!

Here are a few tips:

- Bring your own bottle
  - Say no to single use cups
  - Refuse plastic bags
  - Shop local
  - Do not feed wildlife
  - Minimise carbon emission from travel
  - Abide by the Countryside Code
  - Leave only footprints wherever you go!
- Everything that came with you should leave with you.



## Plastic Free Bridport

In 2021 Bridport achieved Plastic Free Community status, having met the criteria set by Surfers Against Sewage for a town of our size. The focus of the campaign is to reduce and where possible eliminate single use plastics. There are now numerous community groups and businesses across the town that have removed at least three items of single use plastic from their operation and either replaced them with more environmentally friendly alternatives or no longer use or offer them. Achieving Plastic Free Community status for Bridport is not the end of the journey. There is still a long way to go and a lot more to do. For more information on how you can help Bridport with the challenge visit [www.plasticfree.org.uk/community/bridport](http://www.plasticfree.org.uk/community/bridport) or email the Bridport community lead [info@scottstudio.co.uk](mailto:info@scottstudio.co.uk)

## Car Parking

The Football Club and Plottingham car parks are owned by Bridport Town Council. All other car parks in Bridport and West Bay are owned by Dorset Council. All are open 24 hours, with overnight parking, but no sleeping is permitted in vehicles. They operate with a mix of cash and card or using the JustPark app with FREE parking between 6pm and 8am seven days a week. For more information on car parking see [www.bridportandwestbay.co.uk/car-parking](http://www.bridportandwestbay.co.uk/car-parking) There is limited road parking in Bridport and West Bay. Many car parks in Bridport and West Bay have disabled spaces available for blue badge holders. Electric vehicle charging is available in East Street Car Park (DT6 3LL).

We are grateful to the many advertisers, photographers and contributors who helped in the publication of this Guide, without their support this publication would not be possible.

Advertisers	Page	Advertisers	Page
A. G. Down Funeral Directors	66	Jurassic Fun Centre, Freshwater	55
Ammonite & Tiger Cottages	37	Longs Fish and Chip Restaurant	44
Animal House	13	MAC Building Contractors Ltd	66
Battens Jewellers	10	Martin's Bar & Restaurant	36
Battens Solicitors	67	Melplash Agricultural Society	10
Bridport Leisure Centre	53	Mercato Italiano	42
Bridport Music Centre	50	Nantes Solicitors	64
Bridport Tourist Information Centre	2	Neil Barnes, Photographer	25
Britt Valley & Britt River Campgrounds	37	Palmer's Brewery	44
Café Bean	42	Porter Dodson	65
Clocktower Records	51	R J Balson & Son	42
Colmers Hill Fashion Boutique	35	Seaside Sauna Haus	30
Creeds the Printers	62	SHED Beauty Salon, Symondsburry	34
Dorset Nectar	36	Sladers Yard	47
Fiona Neylan Millinery	13	Smith & Smith	10
Framptons of Bridport	45	Sunbird	13
Groves Nurseries	65	Symondsburry Estate	35
Hartley Accountants	63	Taj Mahal Indian Restaurant	43
Huck Nets	67	The Dorset Pedlar	12
Hussey & Briggs	64	Top Sparks	66
Isaac Cider	45	Vicary & Co	63
James Loveridge Photography	26	Wessex Surveyors	63

**Photographic credits** We are grateful to the following photographers who provided the images used in this Guide: James Loveridge, Neil Barnes, Tim Russ, Bridport Arts Centre, Bridport Camera Club, Bridport Electric Palace, Bridport Food Festival, Bridport Museum, Bridport Musical Theatre, Bridport Town Council, Coppet Hill, David Daguier, Dorset Council, Eype Centre for the Arts, Huck Nets, Jurassic Fields, Kathy Dare, Kit Glaisyer, Lyric Theatre, Melplash Agricultural Society, Mike Hounsell, Palmer's Brewery, Sam Rose, The New Elizabethan Singers, The Rifles, West Bay Days, West Bay Discovery Centre and West Dorset Leisure Holidays.

© Bridport Town Council. Locally produced on behalf of Bridport Town Council. Published by Kayenne Marketing. Designed by ADA.







## Bridport & West Bay – Gateway to the Jurassic Coast

Bridport & West Bay (DT6) are situated in West Dorset on the South-West coast of England within easy reach of the County Town of Dorchester, Lyme Regis, Chard, Yeovil and Weymouth.

The B3157 Jurassic Coast Road from Bridport to Weymouth is one of the most strikingly scenic coast roads in Britain. It is a full 18 miles and is the best way to see the World Heritage Jurassic Coast by car, bicycle or bus.

Timetables for buses and trains to and from the area can be found on [www.travelinesw.com](http://www.travelinesw.com) or visit the Bridport Tourist Information Centre.

For car parking in and around Bridport and West Bay (see map inside for locations).

For information on accommodation visit [www.visit-dorset.com](http://www.visit-dorset.com) • [www.bridportandwestbay.co.uk](http://www.bridportandwestbay.co.uk)

