



## Dnevni metulji Slovenije 1

### Osnovni določevalni ključ

Z **Evropskim monitoringom dnevnih metuljev** (eBMS) si prizadevamo boljše spoznati spremembe številčnosti njihovih populacij. Pri tem monitoringu, oziroma spremljanju stanja, po vsej Evropi tisoče prostovoljcev popisuje metulje po enotni metodi. Tako pridobljeni podatki so strokovni temelj za ohranjanje metuljev in njihovih življenjskih prostorov, tako v Sloveniji, kot na območju celotne Evrope.

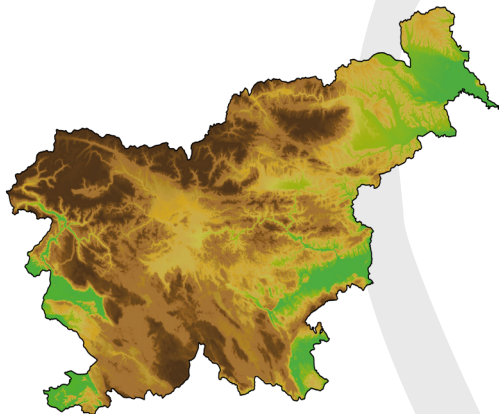
Pred vami je terenski slikovni določevalni ključ, v katerem je predstavljenih **100 najpogostejših oz. najlažje določljivih vrst dnevnih metuljev Slovenije**, ki naj vam služi kot pripomoček pri prepoznavanju in štetju metuljev.

*Ta terenski vodič je na voljo na spletni strani eBMS:  
[www.butterfly-monitoring.net/bms-materials](http://www.butterfly-monitoring.net/bms-materials)*

***Spremljajmo metulje za njihovo varstvo!***

## ***Dnevni metulji Slovenije***

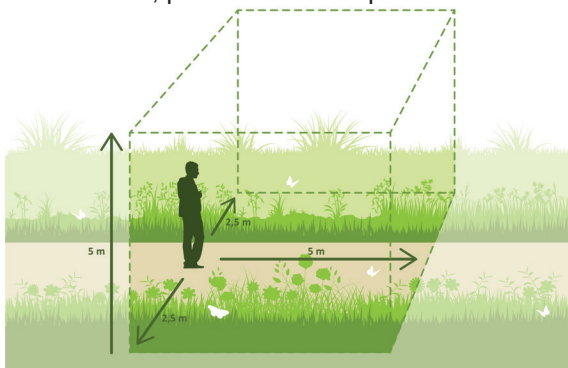
Vrstna pestrost dnevnih metuljev v Sloveniji je, glede na površino države, izredno velika. Skupno v Sloveniji živi **181 vrst dnevnih metuljev**. Nekatere vrste so ozko specializirane in jih najdemo samo v določenih delih države, nekatere pa so splošno razširjene in jih lahko najdemo skoraj povsod, tudi na domačem vrtu. V pričujoči brošuri je predstavljenih 100 vrst dnevnih metuljev, ki so lahko prepoznavne in/ali splošno razširjene v Sloveniji.



## ***Monitoring dnevnih metuljev***

Za spremljanje stanja dnevnih metuljev se uporablja metoda transektnega štetja. Po v naprej izbrani liniji popisovalec hodi s počasnim korakom in beleži vse osebkke dnevnih metuljev v navideznem kvadratu s stranicami 5 m. Popisovanje vrst in štetje osebkov metuljev na izbranem transektu se opravi enkrat na en ali dva tedna, v sončnem vremenu in v najtoplejšem delu dneva, pri minimalni temperaturi 15 °C.

Če se želite pridružiti spremljanju metuljev in opravljati popise na svojem transektu, obiščite [www.butterfly-monitoring.net](http://www.butterfly-monitoring.net) ali stran Društva za proučevanje in ohranjanje metuljev Slovenije [www.facebook.com/metulji](https://www.facebook.com/metulji), kjer nas lahko kotanktirate.



## ***Kako uporabljati določevalni ključ?***

V tem terenskem slikovnem določevalnem ključu je predstavljenih 100 lažje prepoznavnih ali splošno razširjenih vrst dnevnih metuljev, ki jih lahko srečamo tudi na domačih vrtovih. Vrste so urejene sistematično po družinah in skupaj s podobnimi vrstami, kar olajša prepoznavo metuljev.

V ključu pa ni predstavljenih vseh 181 v Sloveniji živečih vrst dnevnih metuljev, saj so določene vrste tako specializirane, da jih v Sloveniji najdemo samo na določenih predelih, na primer v visokogorju. Če se srečate s kakšnim metuljem, za katerega ste v dvomih pri določitvi vrste ali ga ne najdete v tej brošuri, lahko posežete po nadaljevalnem določevalnem ključu, kjer je predstavljenih še dodatnih 63 vrst (Dnevni metulji Slovenije 2).

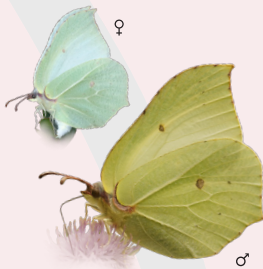
Pri večini vrst je v terenskem določevalnem ključu prikazana spodnja in zgornja stran kril, pri vrstah z izrazito spolno dvoličnostjo, pa so ločeno prikazani samci in samice. Vsaka vrsta je poimenovana s slovenskim in strokovnim imenom. Za vrste, ki imajo imena obarvana rdeče, je potrebno točno določitev preveriti še v nadaljevalnem določevalnem ključu, v katerem so predstavljene še njim podobne redkejše vrste. Poleg tega pa lahko pri vsaki vrsti vidite tudi v katerih mesecih se pojavlja v Sloveniji, kategorijo velikosti (majhen, srednji, velik) in stopnjo ogroženosti vrste. Znaki, na katere moramo biti posebno pozorni pri določevanju, so posebej poudarjeni in označeni ob slikah metuljev.



**glogova belinka**  
*Aporia crataegi*



J	F	M	A	M	J	J	A	S	O	N	D
---	---	---	---	---	---	---	---	---	---	---	---



**citronček**  
*Gonepteryx rhamni*



J	F	M	A	M	J	J	A	S	O	N	D
---	---	---	---	---	---	---	---	---	---	---	---



**navadni senoženjek**  
*Colias crocea*



J	F	M	A	M	J	J	A	S	O	N	D
---	---	---	---	---	---	---	---	---	---	---	---



**repičin belin**  
*Pieris napi*



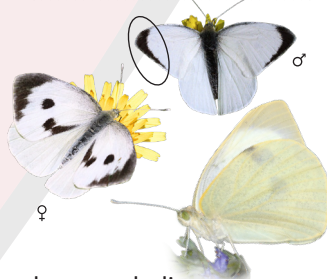
J	F	M	A	M	J	J	A	S	O	N	D
---	---	---	---	---	---	---	---	---	---	---	---



**repin belin**  
*Pieris rapae*



J	F	M	A	M	J	J	A	S	O	N	D
---	---	---	---	---	---	---	---	---	---	---	---



**kapusov belin**  
*Pieris brassicae*



J	F	M	A	M	J	J	A	S	O	N	D
---	---	---	---	---	---	---	---	---	---	---	---



**zorica**  
*Anthocharis cardamines*



J	F	M	A	M	J	J	A	S	O	N	D
---	---	---	---	---	---	---	---	---	---	---	---



**katančev selec**  
*Pontia edusa*



J	F	M	A	M	J	J	A	S	O	N	D
---	---	---	---	---	---	---	---	---	---	---	---



**navadni/irski frfotavček**  
*Leptidea sinapis/juvernica*



J	F	M	A	M	J	J	A	S	O	N	D
---	---	---	---	---	---	---	---	---	---	---	---



**mali kupido**

*Cupido minimus*

J	F	M	A	M	J	J	A	S	O	N	D
---	---	---	---	---	---	---	---	---	---	---	---



**rumenooki kupido**

*Cupido argiades*

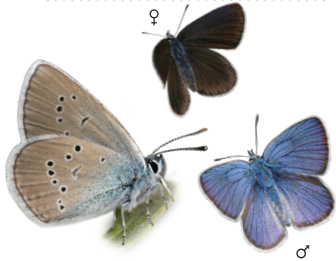
J	F	M	A	M	J	J	A	S	O	N	D
---	---	---	---	---	---	---	---	---	---	---	---



**svetli khrlikar**

*Celastrina argiolus*

J	F	M	A	M	J	J	A	S	O	N	D
---	---	---	---	---	---	---	---	---	---	---	---



**modri grašičar**

*Cyaniris semiargus*

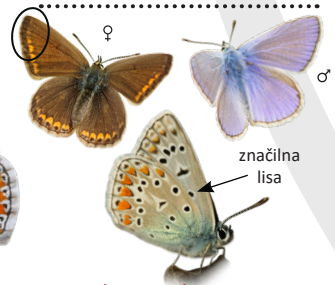
J	F	M	A	M	J	J	A	S	O	N	D
---	---	---	---	---	---	---	---	---	---	---	---



**navadna rjavka**

*Aricia agestis*

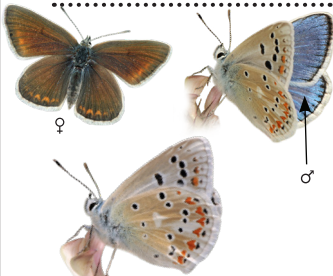
J	F	M	A	M	J	J	A	S	O	N	D
---	---	---	---	---	---	---	---	---	---	---	---



**navadni modrin**

*Polyommatus icarus*

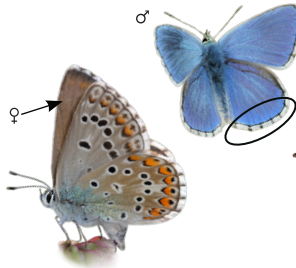
J	F	M	A	M	J	J	A	S	O	N	D
---	---	---	---	---	---	---	---	---	---	---	---



**turkizni modrin**

*Polyommatus dorylas*

J	F	M	A	M	J	J	A	S	O	N	D
---	---	---	---	---	---	---	---	---	---	---	---



**sinji argus**

*Lysandra bellargus*

J	F	M	A	M	J	J	A	S	O	N	D
---	---	---	---	---	---	---	---	---	---	---	---



**kraški argus**

*Lysandra coridon*

J	F	M	A	M	J	J	A	S	O	N	D
---	---	---	---	---	---	---	---	---	---	---	---



**širokorobi mnogook**

*Plebejus argus*

J	F	M	A	M	J	J	A	S	O	N	D
---	---	---	---	---	---	---	---	---	---	---	---



**strašničar mravljiščar**

*Phengaris teleius*

J	F	M	A	M	J	J	A	S	O	N	D
---	---	---	---	---	---	---	---	---	---	---	---



modri hrastar  
*Favonius quercus*

J F M A M J J A S O N D



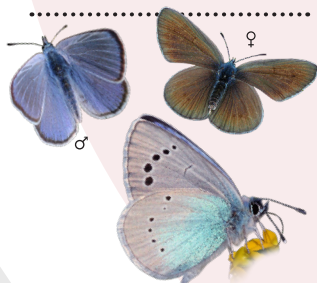
zeleni robidar  
*Callophrys rubi*

J F M A M J J A S O N D



trnov repkar  
*Satyrium spini*

J F M A M J J A S O N D



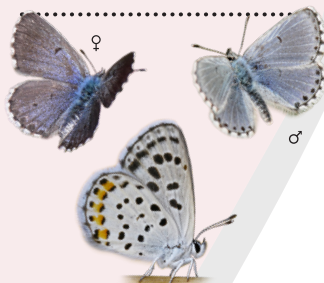
grahovčev krivček  
*Glaucopsyche alexis*

J F M A M J J A S O N D



homuljičin krivček  
*Scolitantides orion*

J F M A M J J A S O N D



šetrajev slepar  
*Pseudophilotes vicrama*

J F M A M J J A S O N D



mali cekinček  
*Lycaena phlaeas*

J F M A M J J A S O N D



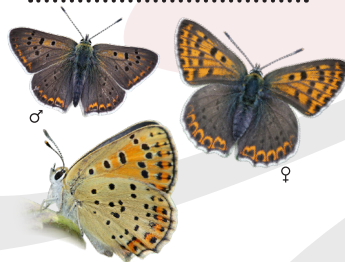
močvirski cekinček  
*Lycaena dispar*

J F M A M J J A S O N D



zlati cekinček  
*Lycaena virgaureae*

J F M A M J J A S O N D



temni cekinček  
*Lycaena tityrus*

J F M A M J J A S O N D



spreminjavi cekinček  
*Lycaena alciphron*

J F M A M J J A S O N D



škrlatni cekinček  
*Lycaena hippothoe*

J F M A M J J A S O N D



veliki spreminjavček  
*Apatura iris*

J	F	M	A	M	J	J	A	S	O	N	D
---	---	---	---	---	---	---	---	---	---	---	---



mali spreminjavček  
*Apatura ilia*

J	F	M	A	M	J	J	A	S	O	N	D
---	---	---	---	---	---	---	---	---	---	---	---



mali trepetlikar  
*Limenitis camilla*

J	F	M	A	M	J	J	A	S	O	N	D
---	---	---	---	---	---	---	---	---	---	---	---



veliki kresničar  
*Neptis rivularis*

J	F	M	A	M	J	J	A	S	O	N	D
---	---	---	---	---	---	---	---	---	---	---	---

rdečkasto obarvano



modri trepetlikar  
*Limenitis reducta*

J	F	M	A	M	J	J	A	S	O	N	D
---	---	---	---	---	---	---	---	---	---	---	---



veliki trepetlikar  
*Limenitis populi*

J	F	M	A	M	J	J	A	S	O	N	D
---	---	---	---	---	---	---	---	---	---	---	---



veliki kresničar  
*Neptis sappho*

J	F	M	A	M	J	J	A	S	O	N	D
---	---	---	---	---	---	---	---	---	---	---	---



gozdni postavnež  
*Euphydryas maturna*

J	F	M	A	M	J	J	A	S	O	N	D
---	---	---	---	---	---	---	---	---	---	---	---



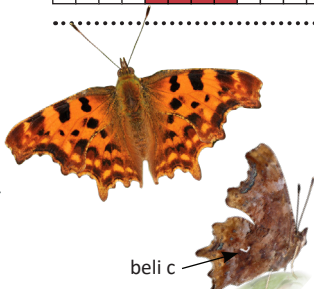
travniški postavnež  
*Euphydryas aurinia*

J	F	M	A	M	J	J	A	S	O	N	D
---	---	---	---	---	---	---	---	---	---	---	---



koprivovčev nosar  
*Libythea celtis*

J	F	M	A	M	J	J	A	S	O	N	D
---	---	---	---	---	---	---	---	---	---	---	---



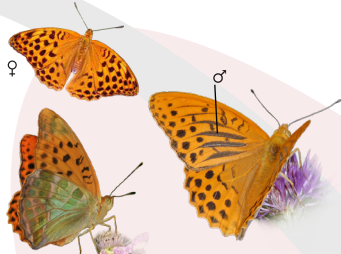
beli c  
*Polygonia c-album*

J	F	M	A	M	J	J	A	S	O	N	D
---	---	---	---	---	---	---	---	---	---	---	---



pikasti pisanček  
*Melitaea cinxia*

J	F	M	A	M	J	J	A	S	O	N	D
---	---	---	---	---	---	---	---	---	---	---	---



**gospica**  
*Argynnis paphia*



J F M A M J J A S O N D



**bleščeči bisernik**  
*Speyeria aglaja*



J F M A M J J A S O N D



**pisani bisernik**  
*Fabriciana adippe*



J F M A M J J A S O N D



**pisana lesketavka**  
*Issoria lathonia*



J F M A M J J A S O N D



**mali tratar**  
*Boloria dia*



J F M A M J J A S O N D



**pomladni tratar**  
*Boloria euphrosyne*



J F M A M J J A S O N D



**dvopiki livadar**  
*Brenthis hecate*



J F M A M J J A S O N D



**močvirski livadar**  
*Brenthis ino*



J F M A M J J A S O N D



**robidov livadar**  
*Brenthis daphne*



J F M A M J J A S O N D



**veliki pisanček**  
*Melitaea phoebe*



J F M A M J J A S O N D



**rdeči pisanček**  
*Melitaea didyma*



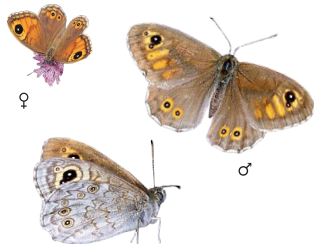
J F M A M J J A S O N D



**navadni pisanček**  
*Melitaea athalia*



J F M A M J J A S O N D



veliki skalnik  
*Lasiommata maera*

J F M A M J J A S O N D



okraști skalnik  
*Lasiommata megera*

J F M A M J J A S O N D



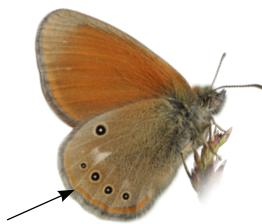
gozdni pegavček  
*Pararge aegeria*

J F M A M J J A S O N D



mali okarček  
*Coenonympha pamphilus*

J F M A M J J A S O N D



travniški okarček  
*Coenonympha glycerion*

J F M A M J J A S O N D



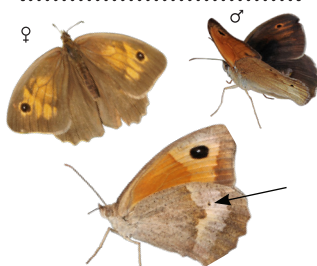
grmiščni okarček  
*Coenonympha arcania*

J F M A M J J A S O N D



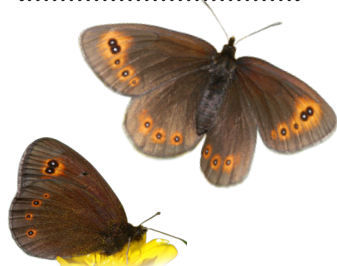
gozdni vratar  
*Pyronia tithonus*

J F M A M J J A S O N D



navadni lešnikar  
*Maniola jurtina*

J F M A M J J A S O N D



pomladni rjavček  
*Erebia medusa*

J F M A M J J A S O N D



belololisi rjavček  
*Erebia ligea*

J F M A M J J A S O N D



svetlololisi rjavček  
*Erebia euryale*

J F M A M J J A S O N D



gozdni rjavček  
*Erebia aethiops*

J F M A M J J A S O N D

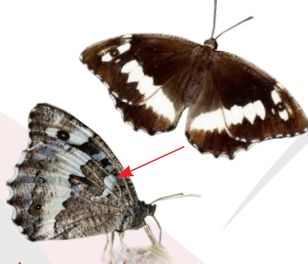




veliki gozdnik  
*Hipparchia fagi*



J	F	M	A	M	J	J	A	S	O	N	D
---	---	---	---	---	---	---	---	---	---	---	---



travnar  
*Brintesia circe*



J	F	M	A	M	J	J	A	S	O	N	D
---	---	---	---	---	---	---	---	---	---	---	---



navadni lisar  
*Melanargia galathea*



J	F	M	A	M	J	J	A	S	O	N	D
---	---	---	---	---	---	---	---	---	---	---	---



skalni okar  
*Satyrus ferula*



J	F	M	A	M	J	J	A	S	O	N	D
---	---	---	---	---	---	---	---	---	---	---	---



žametni modrook  
*Minois dryas*



J	F	M	A	M	J	J	A	S	O	N	D
---	---	---	---	---	---	---	---	---	---	---	---



okrasti košeničar  
*Arethusana arethusa*



J	F	M	A	M	J	J	A	S	O	N	D
---	---	---	---	---	---	---	---	---	---	---	---



Scopiljev zlatook  
*Lopinga achine*



J	F	M	A	M	J	J	A	S	O	N	D
---	---	---	---	---	---	---	---	---	---	---	---



2. generacija

koprivov pajčevinar  
*Araschnia levana*



J	F	M	A	M	J	J	A	S	O	N	D
---	---	---	---	---	---	---	---	---	---	---	---



3 temne lise

mali koprivar  
*Aglais urticae*



J	F	M	A	M	J	J	A	S	O	N	D
---	---	---	---	---	---	---	---	---	---	---	---



okati rjavec  
*Aphantopus hyperantus*



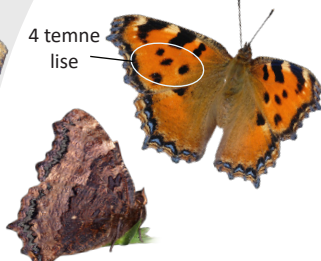
J	F	M	A	M	J	J	A	S	O	N	D
---	---	---	---	---	---	---	---	---	---	---	---



pogrebec  
*Nymphalis antiopa*



J	F	M	A	M	J	J	A	S	O	N	D
---	---	---	---	---	---	---	---	---	---	---	---



4 temne lise

veliki leptec  
*Nymphalis polychloros*



J	F	M	A	M	J	J	A	S	O	N	D
---	---	---	---	---	---	---	---	---	---	---	---

PISANČKI



admiral  
*Vanessa atalanta*



J	F	M	A	M	J	J	A	S	O	N	D
---	---	---	---	---	---	---	---	---	---	---	---



osatnik  
*Vanessa cardui*



J	F	M	A	M	J	J	A	S	O	N	D
---	---	---	---	---	---	---	---	---	---	---	---



dnevni pavlinček  
*Aglais io*



J	F	M	A	M	J	J	A	S	O	N	D
---	---	---	---	---	---	---	---	---	---	---	---

ŠEKAVČKI



rjavi šekavček  
*Hamearis lucina*



J	F	M	A	M	J	J	A	S	O	N	D
---	---	---	---	---	---	---	---	---	---	---	---

RIODINIDAE

PAPILIONIDAE - LASTOVIČARJI



rdeči apolon  
*Parnassius apollo*



J	F	M	A	M	J	J	A	S	O	N	D
---	---	---	---	---	---	---	---	---	---	---	---



Črni apolon  
*Parnassius mnemosyne*



J	F	M	A	M	J	J	A	S	O	N	D
---	---	---	---	---	---	---	---	---	---	---	---



lastovičar  
*Papilio machaon*



J	F	M	A	M	J	J	A	S	O	N	D
---	---	---	---	---	---	---	---	---	---	---	---



jadralec  
*Iphiclides podalirius*



J	F	M	A	M	J	J	A	S	O	N	D
---	---	---	---	---	---	---	---	---	---	---	---



petelinček  
*Zerynthia polyxena*



J	F	M	A	M	J	J	A	S	O	N	D
---	---	---	---	---	---	---	---	---	---	---	---



nokotin sivček  
*Erynnis tages*

J F M A M J J A S O N D



slezenovčev kosmičar  
*Carcharodus alceae*

J F M A M J J A S O N D



navadni slezovček  
*Pyrgus malvae*

J F M A M J J A S O N D



jagodnjakov slezovček ✓  
*Pyrgus armoricanus*

J F M A M J J A S O N D



rdečkasti venčar ✓  
*Spialia sertorius*

J F M A M J J A S O N D



temni poplesovalec  
*Heteropterus morpheus*

J F M A M J J A S O N D



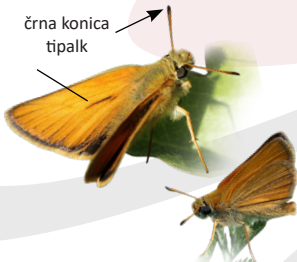
lisasti debeloglavec  
*Carterocephalus palaemon*

J F M A M J J A S O N D



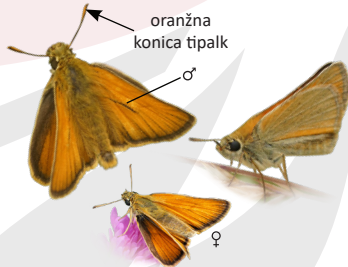
biserni vejičar  
*Hesperia comma*

J F M A M J J A S O N D



kratkočrti debeloglavček  
*Thymelicus lineola*

J F M A M J J A S O N D



dolgočrti debeloglavček  
*Thymelicus sylvestris*

J F M A M J J A S O N D



rjasti vihravček  
*Ochloides sylvanus*

J F M A M J J A S O N D

Na pobudo dveh evropskih organizacij (Butterfly Conservation Europe in UK Centre for Ecology and Hydrology (UK-CEH)) se je oblikoval **Evropski monitoring dnevnih metuljev** (eBMS). Vse države, ki sodelujejo pri tem spremljanju stanja populacij dnevnih metuljev, letno delijo podatke pridobljene z metodo transektnega štetja. Ti podatki služijo izračunu populacijskih trendov evropskih vrst dnevnih metuljev in indeksa travniških vrst dnevnih metuljev, ki so strokovna podlaga za nadaljnje ukrepanje pri varstvu metuljev in njihovih življenjskih prostorov.

Za več informacij o Evropskem monitoringu dnevnih metuljev obiščite spletno stran: [www.butterfly-monitoring.net](http://www.butterfly-monitoring.net). V kolikor bi se želeli pridružiti popisovanju metuljev v Sloveniji, kontaktirajte Društvo za proučevanje in ohranjanje metuljev Slovenije (DPOMS): [info.metulji@gmail.com](mailto:info.metulji@gmail.com), [www.facebook.com/metulji](https://www.facebook.com/metulji). V DPOMS smo vključeni posamezniki, ki nas združuje zanimanje za metulje. Ukvarjamo se z metulji na območju Slovenije, predvsem z njihovo razširjenostjo in ekologijo ter tudi s promocijo metuljev med širšo javnostjo. Vabljeni, da se nam pridružite!

Ta terenski določevalni ključ je bil narejen v evropskem pilotnem projektu ABLE (Assessing ButterLies in Europe).

Avtorji: Cristina G. Sevilleja (koordinator projekta ABLE), Luka Šturm, dr. Rudi Verovnik (Biotehniška fakulteta, Univerza v Ljubljani) in Barbara Zakšek (Center za kartografijo favne in flore).

Fotografije: Luka Šturm, dr. Rudi Verovnik, Barbara Zakšek, Primož Glogovčan in Nika Kogovšek; Paolo Mazzei, Marco Bonifacino, Raniero Panfilii in Daniel Morel ([www.leps.it](http://www.leps.it)); Izabella Dziekanska, Marcin Sielezniew, Albert Vliegenthart in Chris van Swaay.

Oblikovanje: Eveline van der Jagt

Založnik: Društvo za proučevanje in ohranjanje metuljev Slovenije, 2020. Elektronska izdaja

ABLE - Assessing ButterLies in Europe

eBMS - European Butterfly Monitoring Scheme

Stopnja ogroženosti (Pravilnik o uvrstitvi ogroženih rastlinskih in živalskih vrst v rdeči seznam):

 ranljiva vrsta  prizadeta vrsta

Z rdečo barvo so obarvana imena metuljev, ki se pojavljajo tudi v nadaljevalnem ključu (Dnevni metulji Slovenije 2).

Obdobje pojavljanja odraslih metuljev po mesecih:

J F M A M J J A S O N D

Velikosti metuljev:

 majhen  srednji  velik

Spol:

♀ samica ♂ samec

Simboli:

→ ○ Določevalni znaki na katere moramo biti posebej pozorni

Kataložni zapis o publikaciji (CIP) pripravili v Narodni in univerzitetni knjižnici v Ljubljani  
COBISS.SI-ID 53982723 ISBN 978-961-95310-0-6 (pdf)

