

La **Comunidad Autónoma de Castilla-La Mancha** ocupa el centro-sur peninsular con una extensión de 79.463 km². El clima es mediterráneo continental de interior con temperaturas frías en invierno y cálidas en verano. Es una región con contrastes geomorfológicos, con importantes cadenas montañosas como el Sistema Central (punto más alto, el Pico del Lobo, a 2.274 msnm), Sistema Ibérico, Cordillera Subbética, Sierra Morena y Montes de Toledo. Asimismo, cuenta con valles fluviales como el del Tajo y cuencas lacustres y humedales en la Mancha como las Lagunas de Ruidera o Tablas de Daimiel. Todo ello le aporta a esta comunidad una variedad de ambientes y ecosistemas únicos que se reflejan en las comunidades vegetales y animales. La vegetación más representativa son los encinares en zonas más bajas, los robles melojo y quejigo en zonas de media montaña y en zonas de montaña podemos encontrar extensos pinares de pino salgareño y silvestre, así como extensas parameras de sabelo.

Castilla-La Mancha tiene importantes puntos calientes de biodiversidad, como el Alto Tajo y la Serranía de Cuenca (Prime Butterfly Area) con 143 y 150 especies de mariposas censadas respectivamente. Asimismo, la provincia de Guadalajara con 155 especies y Cuenca con 151 son las que mayor riqueza presentan en la región. El total de especies registradas en Castilla-La Mancha es de **157, lo que hace un 67,4% del total peninsular**.

Visite el sitio web de eBMS www.butterfly-monitoring.net para averiguar más sobre el Seguimiento de Mariposas y cómo participar recogiendo datos de mariposas. También puede encontrar la lista completa de especies de mariposas de Castilla-La Mancha (157) en la web de eBMS junto con esta Guía para descargar. Para participar en el Seguimiento de mariposas en España contacte con el coordinador nacional, Miguel L. Munguira: munguira@uam.es

Esta guía fue financiada por el proyecto ABLE (Assessing Butterflies in Europe), un proyecto piloto europeo de la Dirección General de Medio Ambiente de la Comisión Europea

Autores: Cristina G. Sevilleja (Coordinadora proyecto ABLE), Juan Ignacio de Arce (Coordinador Regional BMS España, Castilla-La Mancha) y Miguel L. Munguira (Coordinador Nacional BMS España).

Fotografías: Félix Loarte García, Juan Pablo Cancela, Mariano Vindel, José Rodrigo Dapena, Javier Olivares, Jose Miguel Barea; Paolo Mazzei, Marco Bonifacino, Raniero Panfili y Daniel Morel (www.leps.it); Albert Vliegthart y Chris van Swaay.

Diseñadora gráfica: Eveline van der Jagt

ABLE - Assessing Butterflies in Europe
eBMS - European Butterfly Monitoring Scheme

Periodo de vuelo: meses en que las mariposas son observables

E F M A M J J A S O N D

Tamaño de la mariposa:

 Pequeña  Mediana  Grande

Sexo:

♀ Hembra ♂ Macho

Símbolos:

→ ○ Características representativas para identificar las especies

Mariposa de portada: *Kretania hesperica*
Foto de Rafael Pérez Fernández



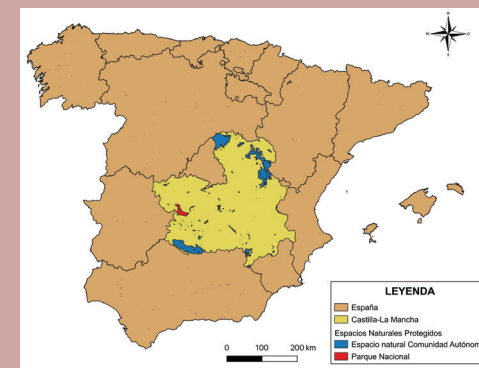
Castilla-La Mancha

Guía de campo para la identificación de mariposas

El **Programa de Seguimiento de Mariposas en España** (BMS España según sus siglas en inglés) tiene como finalidad recoger datos para impulsar el conocimiento y la conservación de este grupo de insectos. BMS España forma parte del Programa Europeo, eBMS que recoge los datos de miles de voluntarios en Europa siguiendo una metodología común con rutas fijas (transectos). En la Comunidad de Castilla-La Mancha se realiza el Seguimiento de Mariposas siendo una región rica con **157 especies de mariposas**, por su diversidad de ecosistemas en la región.

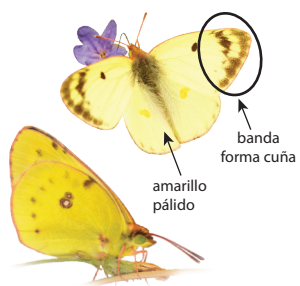
El objetivo de esta guía es facilitar la tarea de identificación en campo de **72 especies de mariposas diurnas más comunes de Castilla-La Mancha**.

Las especies están divididas en cinco familias (ver bordes de las páginas). Para identificar las distintas especies, sus características más representativas están resaltadas con símbolos.



¡Contando mariposas ayudarás a protegerlas!





Colias alfacariensis 🦋

E F M A M J J A S O N D



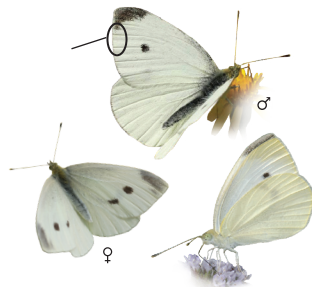
Colias crocea 🦋

E F M A M J J A S O N D



Leptidea sinapis 🦋

E F M A M J J A S O N D



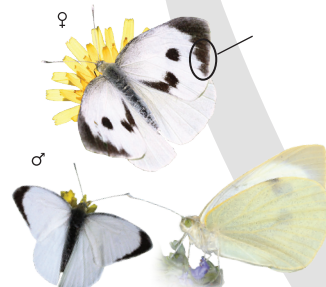
Pieris rapae 🦋

E F M A M J J A S O N D



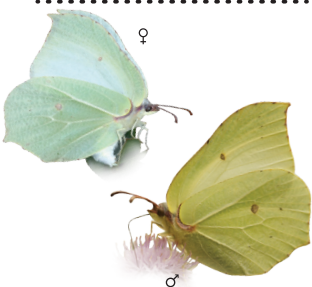
Pieris napi 🦋

E F M A M J J A S O N D



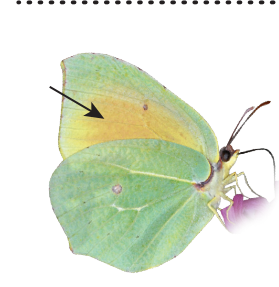
Pieris brassicae 🦋

E F M A M J J A S O N D



Gonepteryx rhamnii 🦋

E F M A M J J A S O N D



Gonepteryx cleopatra 🦋

E F M A M J J A S O N D



Aporia crataegi 🦋

E F M A M J J A S O N D



Euchloe crameri 🦋

E F M A M J J A S O N D



Pontia daplidice 🦋

E F M A M J J A S O N D



Anthocharis euphenoides 🦋

E F M A M J J A S O N D



Ipliclides feisthamelii 🦋

E F M A M J J A S O N D



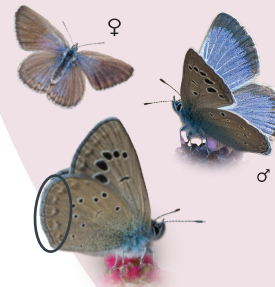
Papilio machaon 🦋

E F M A M J J A S O N D



Zerynthia rumina 🦋

E F M A M J J A S O N D



Glaucopsyche melanops 🦋

E F M A M J J A S O N D



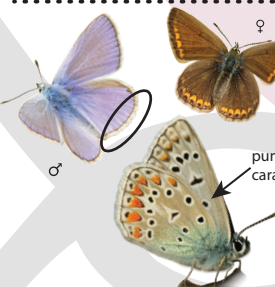
Plebejus argus/idas 🦋

E F M A M J J A S O N D



Polyommatus thersites 🦋

E F M A M J J A S O N D



Polyommatus icarus/celina 🦋

E F M A M J J A S O N D



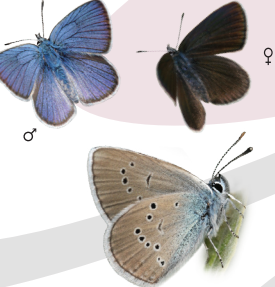
Lysandra bellargus 🦋

E F M A M J J A S O N D



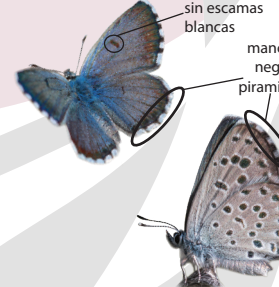
Polyommatus escheri 🦋

E F M A M J J A S O N D



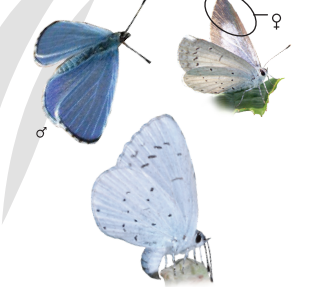
Cyaniris semiargus 🦋

E F M A M J J A S O N D



Pseudophilotes panoptes 🦋

E F M A M J J A S O N D



Celastrina argiolus 🦋

E F M A M J J A S O N D



Ochloides sylvanus

E	F	M	A	M	J	J	A	S	O	N	D
---	---	---	---	---	---	---	---	---	---	---	---



Carcharodus alceae

E	F	M	A	M	J	J	A	S	O	N	D
---	---	---	---	---	---	---	---	---	---	---	---



Carcharodus baeticus

E	F	M	A	M	J	J	A	S	O	N	D
---	---	---	---	---	---	---	---	---	---	---	---

NYMPHALIDAE



Nymphalis polychloros

E	F	M	A	M	J	J	A	S	O	N	D
---	---	---	---	---	---	---	---	---	---	---	---



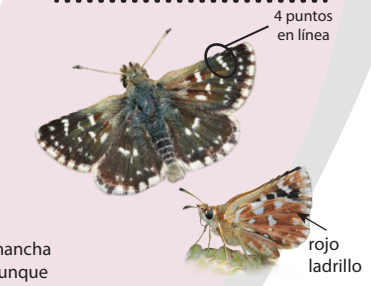
Vanessa cardui

E	F	M	A	M	J	J	A	S	O	N	D
---	---	---	---	---	---	---	---	---	---	---	---



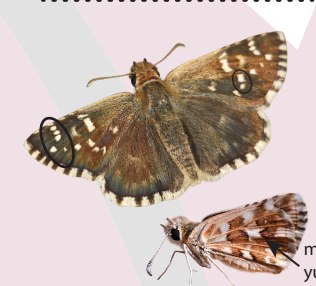
Vanessa atalanta

E	F	M	A	M	J	J	A	S	O	N	D
---	---	---	---	---	---	---	---	---	---	---	---



Spialia sertorius

E	F	M	A	M	J	J	A	S	O	N	D
---	---	---	---	---	---	---	---	---	---	---	---



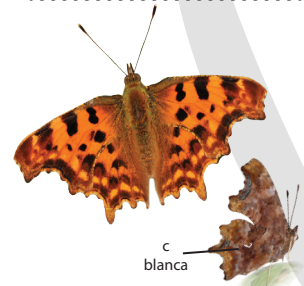
Pyrgus onopordi

E	F	M	A	M	J	J	A	S	O	N	D
---	---	---	---	---	---	---	---	---	---	---	---



Muschampia proto

E	F	M	A	M	J	J	A	S	O	N	D
---	---	---	---	---	---	---	---	---	---	---	---



Polygonia c-album

E	F	M	A	M	J	J	A	S	O	N	D
---	---	---	---	---	---	---	---	---	---	---	---



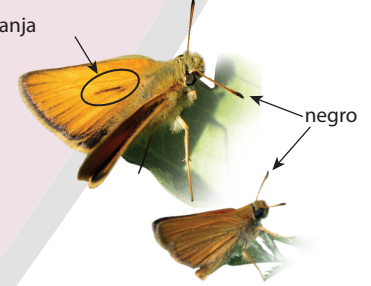
Aricia cramera

E	F	M	A	M	J	J	A	S	O	N	D
---	---	---	---	---	---	---	---	---	---	---	---



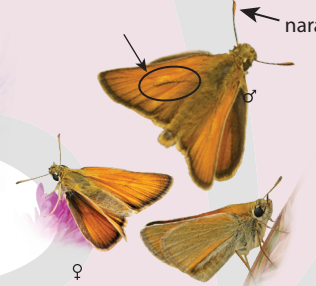
Lycaena phlaeas

E	F	M	A	M	J	J	A	S	O	N	D
---	---	---	---	---	---	---	---	---	---	---	---



Thymelicus lineola

E	F	M	A	M	J	J	A	S	O	N	D
---	---	---	---	---	---	---	---	---	---	---	---



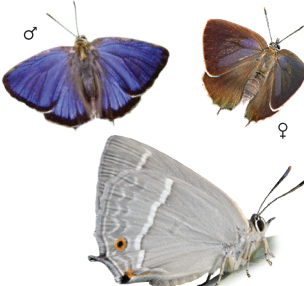
Thymelicus sylvestris

E	F	M	A	M	J	J	A	S	O	N	D
---	---	---	---	---	---	---	---	---	---	---	---



Thymelicus acteon

E	F	M	A	M	J	J	A	S	O	N	D
---	---	---	---	---	---	---	---	---	---	---	---



Favonius quercus

E	F	M	A	M	J	J	A	S	O	N	D
---	---	---	---	---	---	---	---	---	---	---	---



Satyrium esculi

E	F	M	A	M	J	J	A	S	O	N	D
---	---	---	---	---	---	---	---	---	---	---	---



Lampides boeticus

E	F	M	A	M	J	J	A	S	O	N	D
---	---	---	---	---	---	---	---	---	---	---	---



Hesperia comma

E	F	M	A	M	J	J	A	S	O	N	D
---	---	---	---	---	---	---	---	---	---	---	---



Erynnis tages

E	F	M	A	M	J	J	A	S	O	N	D
---	---	---	---	---	---	---	---	---	---	---	---



Zegris eupheme

E	F	M	A	M	J	J	A	S	O	N	D
---	---	---	---	---	---	---	---	---	---	---	---

PIERIDAE



Tomares ballus

E	F	M	A	M	J	J	A	S	O	N	D
---	---	---	---	---	---	---	---	---	---	---	---



Callophrys rubi

E	F	M	A	M	J	J	A	S	O	N	D
---	---	---	---	---	---	---	---	---	---	---	---



Leptotes pirithous

E	F	M	A	M	J	J	A	S	O	N	D
---	---	---	---	---	---	---	---	---	---	---	---

NYMPHALIDAE

LYCAENIDAE



Pararge aegeria

E	F	M	A	M	J	J	A	S	O	N	D
---	---	---	---	---	---	---	---	---	---	---	---



Lasiommata megera

E	F	M	A	M	J	J	A	S	O	N	D
---	---	---	---	---	---	---	---	---	---	---	---



Lasiommata maera

E	F	M	A	M	J	J	A	S	O	N	D
---	---	---	---	---	---	---	---	---	---	---	---



Pyronia bathseba

E	F	M	A	M	J	J	A	S	O	N	D
---	---	---	---	---	---	---	---	---	---	---	---



Pyronia cecilia

E	F	M	A	M	J	J	A	S	O	N	D
---	---	---	---	---	---	---	---	---	---	---	---



Pyronia tithonus

E	F	M	A	M	J	J	A	S	O	N	D
---	---	---	---	---	---	---	---	---	---	---	---



Argynnis pandora

E	F	M	A	M	J	J	A	S	O	N	D
---	---	---	---	---	---	---	---	---	---	---	---



Argynnis paphia

E	F	M	A	M	J	J	A	S	O	N	D
---	---	---	---	---	---	---	---	---	---	---	---



Coenonympha dorus

E	F	M	A	M	J	J	A	S	O	N	D
---	---	---	---	---	---	---	---	---	---	---	---



Coenonympha pamphilus

E	F	M	A	M	J	J	A	S	O	N	D
---	---	---	---	---	---	---	---	---	---	---	---



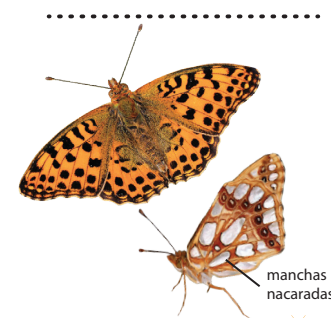
Maniola jurtina

E	F	M	A	M	J	J	A	S	O	N	D
---	---	---	---	---	---	---	---	---	---	---	---



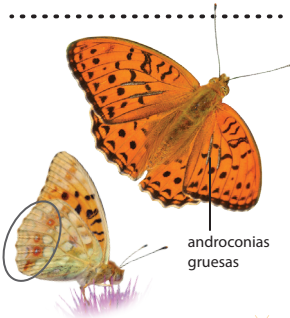
Hyponephele lupina

E	F	M	A	M	J	J	A	S	O	N	D
---	---	---	---	---	---	---	---	---	---	---	---



Issoria lathonia

E	F	M	A	M	J	J	A	S	O	N	D
---	---	---	---	---	---	---	---	---	---	---	---



Fabriciana adippe

E	F	M	A	M	J	J	A	S	O	N	D
---	---	---	---	---	---	---	---	---	---	---	---



Melanargia ines

E	F	M	A	M	J	J	A	S	O	N	D
---	---	---	---	---	---	---	---	---	---	---	---



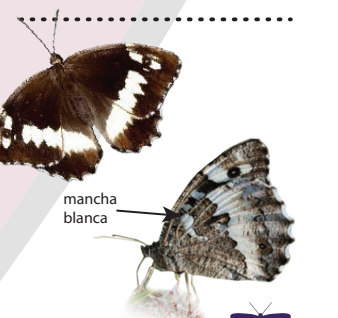
Melanargia lachesis

E	F	M	A	M	J	J	A	S	O	N	D
---	---	---	---	---	---	---	---	---	---	---	---



Hipparchia hermione

E	F	M	A	M	J	J	A	S	O	N	D
---	---	---	---	---	---	---	---	---	---	---	---



Brintesia circe

E	F	M	A	M	J	J	A	S	O	N	D
---	---	---	---	---	---	---	---	---	---	---	---



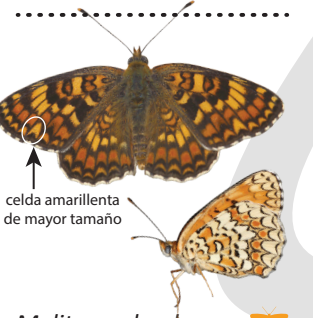
Melitaea cinxia

E	F	M	A	M	J	J	A	S	O	N	D
---	---	---	---	---	---	---	---	---	---	---	---



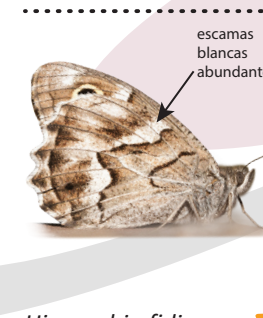
Melitaea dydima

E	F	M	A	M	J	J	A	S	O	N	D
---	---	---	---	---	---	---	---	---	---	---	---



Melitaea phoebe

E	F	M	A	M	J	J	A	S	O	N	D
---	---	---	---	---	---	---	---	---	---	---	---



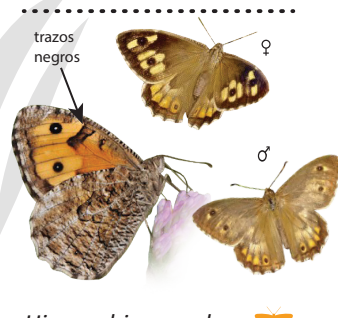
Hipparchia fidia

E	F	M	A	M	J	J	A	S	O	N	D
---	---	---	---	---	---	---	---	---	---	---	---



Hipparchia statilinus

E	F	M	A	M	J	J	A	S	O	N	D
---	---	---	---	---	---	---	---	---	---	---	---



Hipparchia semele

E	F	M	A	M	J	J	A	S	O	N	D
---	---	---	---	---	---	---	---	---	---	---	---