





## **Table of Contents**

Underlayment.....	2
Insulation.....	3
Fasteners.....	4-9
Concealed Fasteners.....	4-5
Exposed Fasteners.....	6
Woodfast.....	7
Self-Drillers.....	8
For Aluminum - Stainless Steel.....	9
Clips.....	10-14
Versa-Span™ .....	10
MS-100™ / MS-150™ .....	11
MS200™ .....	12
Contour.....	13
Slim-Lock™ / T-Panel™ / Gutter Hanger / Plate.....	14
Snow Retention/S-5! Clamps.....	15-16
Sealants.....	17-19
Gunnable.....	17-18
Tape.....	19
Closures.....	20-23
Pipe Flashings.....	24-25
Standard / High Temp. Rating.....	24
Retrofit Dektite / Chemlink Pipe Flashings.....	25
Skylight Panels.....	26-27
Polycarbonate.....	26
Fiberglass.....	27
Miscellaneous.....	28-29
Door Track Hardware.....	30-35

## UNDERLAYMENT

### 2 sq. roll (183 sf net) of TMP Protect HT Ice & Water Shield

Self-adhering, high temperature (up to 260°F) underlayment  
minimum slope: 1/2:12



[Click here](#) for more info

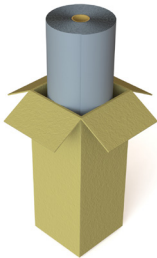
**Product Part #: AIWTMPPHT**

**Product Units & Weight: Pallet 25pc / 42.0lbs per roll**

### Malarkey Secure Start PLUS Underlayment

Self-adhering, high temperature underlayment (up to 240°F) suitable  
for use as a waterproof underlayment in steep slope roofing  
applications.

Minimum slope: 2:12



[Click here](#) for more info

**Product Part #: AMPU**

**Product Units & Weight: Pallet 25pc. / 33.0lbs per roll**

### Dura-Skrim - White

Vapor barrier for open purlin structures

8' x 65'

**ADU8.65W**

**Pallet 40pc. / 18.0lbs per roll**

8' x 125'

**ADU8.125W**

**Pallet \_\_\_pc. / 30.0lbs per roll**

14' x 100'

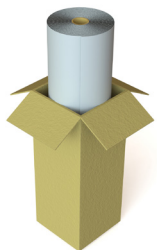
**ADU14.100W**

**Pallet 20pc. / 42.0lbs per roll**

20' x 100'

**ADU20.100W**

**Pallet 20pc. / 60.0lbs per roll**



[Click here](#) for more info

### Polystick XFR Fire Resistant Self-Adhered Roof Underlayment

Dual purpose fire resistant and self-adhered waterproofing  
underlayment, with a temperature resistance up to 265°F. Features  
a slip-resistant film surface that can be exposed up to 180 days.

Minimum slope: No min., works for all slopes



**Product Part #: AIWPHT**

**Product Units & Weight: Pallet 20pc. / 75.0lbs per roll**



# INSULATION

---

## Double Sided-Tape 1-1/2" x 180'



*A high performance tape specifically designed for tough bonding applications. Has excellent UV and temperature resistance, and performs well at high and low temperatures.*

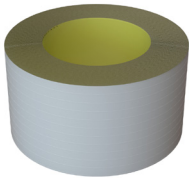
**Product Part #: ADST**

**Product Units & Weight: 0.92lbs per tape  
28.56lbs per box**

[Click here](#) for more info

## VRR Insulation Patch Tape - 3" x 150'

*Used for taping up holes or tears in insulation*



**Product Part #: AIT**

**Product Units & Weight: 1.49lbs per tape  
23.90lbs per box**

## VRR (vinyl backed) Insulation Blanket 2" - (see below)



[Click here](#) for more info

6' x 27'

**AI27**

**Pallet 25pc. / 15.0lbs per roll**

6' x 33'

**AI33**

**Pallet 25pc. / 27.0lbs per roll**

6' x 39'

**AI39**

**Pallet 25pc. / 35.0lbs per roll**

6' x 43'

**AI43**

**Pallet 25pc. / 47.0lbs per roll**

# FASTENERS

## CONCEALED FASTENERS

### Pancake Phillips Head - Recommended for panel and clip attachment to wood



#10 x 1"

**ASPHP100**

**Bag 250pc. / 1.77lbs per bag**

**29.27lbs per box**

#10 x 1"

**ASPHP100 - STAINLESS**

**Bag 250pc. / 0.75lbs per bag**

**28.48lbs per box**

#10 x 1-1/2"

**ASPHP150**

**Bag 250pc. / 2.39lbs per bag**

#10 X 2"

**ASPHP200**

**Bag 250pc. / 3.04lbs per bag**

**31.18lbs per box**

### Pancake Quadrex Head - Recommended for panel and clip attachment to wood



#10 x 1"

**ASPHQ100**

**Bag 250pc. / 1.89lbs per bag**

#10 x 1-1/2"

**ASPHQ150**

**Bag 250pc. / 0.75lbs per bag**

#10 X 2"

**ASPHQ200**

**Bag 250pc. / 0.75lbs per bag**

[Click here](#) for more info

### #10x1" Pancake Quadrex Head Tek Self-Driller

*Recommended for panel and clip attachment to steel*



**Product Part #: ASPHQT100**

**Product Units & Weight: Bag 250pc. / 1.70lbs per bag**

**29.75lbs per box**

[Click here](#) for more info

### Pancake Square Head Screw - Recommended for panel and clip attachment to wood



#10 x 1" Pancake Square Head Screw

**Product Part #: ASPHS100**

**Product Units & Weight: Bag 250pc. / 1.77lbs per bag**

#10 x 1-1/2 Square Drive (special order)

**Product Part #: ASPHS150**

**Product Units & Weight: Bag 250pc. / 2.38lbs per bag**

# FASTENERS

## CONCEALED FASTENERS

### Waferhead Phillips Head

*Recommended for panel and clip attachment to wood*



1" **ASWHP100**  
**Bag 250pc. / 1.43lbs per bag**  
**23.70lbs per box**

1-1/2" **ASWHP150**  
**Bag 250pc. / 1.65lbs per bag**  
**34.15lbs per box**

### Waferhead Square Drive

*Recommended for panel and clip attachment to wood*



1" **ASWHS100**  
**Bag 250pc. / 1.67lbs per bag**  
**34.73lbs per box**

1-1/2" **ASWHS150**  
**Bag 250pc. / 2.21lbs per bag**  
**28.84lbs per box**

2" **ASWHS200**  
**Bag 250pc. / 2.87lbs per bag**

### Lathhead Tek Point

*Shallow trim screw that can be used over areas where screw may peak from underneath (example: overhang)*



#8 x 9/16" **ASLHT050**  
**Bag 250pc. / 0.83lbs per bag**

#8 x 3/4" **ASLHT075**  
**Bag 250pc. / 1.05lbs per bag**

### Lathhead Sharp Point

*Shallow trim screw*



#8 x 9/16" **ASLH050**  
**Bag 250pc. / 0.79lbs per bag**

*Used as an alternative to Waferhead screws*

#8 x 1" **ASLH100**  
**Bag 250pc. / 1.29lbs per bag**

# FASTENERS

## EXPOSED FASTENERS

### #43 Pop Rivet (1/8") - Stainless

*Rivets are used to attach metal such as lap joints, trim to trim, trim to panel, and side lap attachment.*



*\*Available in plain and painted*

**Product Part #: APR-Stainless**

**Product Units & Weight: Bag 100pc. / 0.31lbs per bag  
8.22lbs per box**

### #64 Stainless Closed End Rivet (3/16")

*Used where a watertight application is required when metal layers are sandwiched with butyl tape.*



**Product Part #: APRC**

**Product Units & Weight: Bag 100pc. / 0.78lbs per bag  
38.75lbs per box**

### #12 x 3/4" Woodfast Screw (Stitch)

*Stitch screws are used to attach metal to metal such as lap joints, trim to trim, trim to panel and side lap attachment. They can be used interchangeably with rivets.*



[Click here](#) for more info

**Product Part #: ASWF075**

**Product Units & Weight: Bag 250 pc. / 2.10lbs per bag  
Box 12 bags/ 26.05lbs per box**



# FASTENERS

## WOODFAST

### #10 Woodfast



[Click here](#) for more info

Trim or panel screw, recommended use for metal to wood applications.

#10 x 1"

**ASWF100**

Bag 250 pc. / 2.00lbs per bag

Box 12 bags/ 25.19lbs per box

#10 x 1-1/2"

**ASWF150**

Bag 250 pc. / 2.67lbs per bag

Box 10 bags/ 26.18lbs per box

#10 x 2"

**ASWF200**

Bag 250 pc. / 3.15lbs per bag

26.17lbs per box

### #17 x 1" Goof Screw - galvanized only



Trim or panel screw, recommended use for metal to wood applications when replacing smaller fasteners.

\*Colors special order

**Product Part #: ASGS100-GA**

**Product Units & Weight: Bag 250pc. / 3.50lbs per bag  
38.61lbs per box**

### #14 Type-S Woodfast



#14 Woodfast screws are used to attach panel to plywood/OSB.

\*Available in plain, painted, and stainless

#14 x 1"

**ASWFS100**

Bag 250pc. / 3.51lbs per bag

Box 10 bags/ 34.91lbs per box

#14 x 1.5"

**ASWFS150**

Bag 250pc. / 3.91lbs per bag

Box 8 bags / 38.38lbs per box

#14 x 2"

**ASWFS200**

Bag 250pc. / 5.71lbs per bag

35.16lbs per box

# FASTENERS

## SELF-DRILLERS

### #12 Tek Self Diller



[Click here](#) for more info

*Tek screws are used for attaching panels to metal purlins (metal to metal)*

#12 x 1"

**AST100**

**Bag 250pc. / 3.46lbs per bag**

**Box 10 bags/ 35.1lbs per box**

#12 x 1.5"

**AST150**

**Bag 250pc. / 4.12lbs per bag**

**Box 8 bags/ 33.94lbs per box**

#12 x 2"

**AST200**

**Bag 250pc. / 4.89lbs per bag**

**35.3lbs per box**

### #12 Tek Screw Hex Head (No Washer)

*Used mainly for steel frame buildings and our OverEZee's*



[Click here](#) for more info

#12 x 1"

**ASTNW100**

**Bag 250pc. / 2.66lbs per bag**

#12 x 1-1/2"

**ASTNW150**

**Bag 250pc. / 3.43lbs per bag**

### #14 x 7/8" Lap Tek Stitch

*Stitch screws are used to attach metal to metal such as lap joints, trim to trim, trim to panel, and side lap attachment. They can be used interchangeably with rivets.*



**Product Part #: AST087**

**Product Units & Weight: Bag 250pc. / 3.52lbs per bag**

**Box 10 bags/ 36.05lbs per box**

## FASTENERS

---

### FOR ALUMINUM - STAINLESS STEEL FASTENERS

#### #9 x 1" 304 Stainless Steel Woodfast Screw

*Recommended use for metal to wood applications.*

*\*For aluminum*



**Product Part #: ASWFAL100**

**Product Units & Weight: Bag 250pc. / 2.06lbs per bag  
25.03lbs per box**

#### #12 x 1-1/8" Self Driller 304 Stainless Steel

*Recommended use to attach panels to metal or metal to metal applications.*

*\*Goes with stitch screw*

*\*\*For aluminum*



**Product Part #: ASTAL100**

**Product Units & Weight: Bag 250pc. / 3.11lbs per bag**

#### #14 x 1" Type S 304 Stainless Steel

*Recommended use when attaching panel to plywood/OSB.*

*\*For aluminum*



**Product Part #: ASWFSA100**

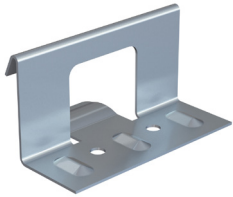
**Product Units & Weight: Bag 250pc. / 1.86lbs per bag  
19.59lbs per box**

## CLIPS

### VERSA-SPAN™ / T-PANEL™

#### Versa-Span™ 1-3/4" x 3-1/2" 18GA Clip UL Rated

*\*Available in stainless steel*



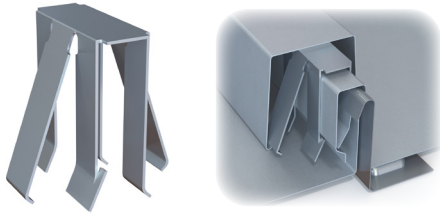
**Product Part #: AVSCLIP-UL**

**Product Units & Weight:** Box Quantity 250pc. / 38.68lbs per box / 0.15lbs per piece

#### Batten Trim (Spider) Clip

*Used in combination with a Versa-Span™ clip and wide batten panel system.*

*\*Special order item*



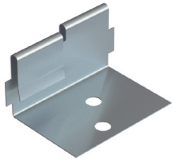
**Product Part #: AVSCLIP-SPIDER**

**Product Units & Weight:** Box Quantity 500pc. / 50.5lbs per box / 0.05lbs per piece

#### T-Panel™ Clip 24GA

*Used with a narrow batten panel system.*

*\*Available in stainless steel, copper, and galvanized*



**Product Part #: ATPCLIP**

**Product Units & Weight:** Box Quantity 1000pc. / 37.75lbs per box / 0.04lbs per piece

#### T-Panel Clip (Wide Batten)

*Used with a wide batten panel system.*



**Product Part #: ATPCLIPW**

**Product Units & Weight**

## CLIPS

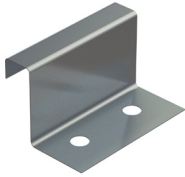
---

### MS-100™ / MS-150™

#### 24GA MS-100™ 1" Fixed Clip w/ Sealant

*Recommended for panel lengths less than 35 ft.*

*\*Available in stainless steel*



**Product Part #: AMSCLIP100**

**Product Units & Weight:** Box Quantity 500pc. / 17.57lbs per box / 0.03lbs per piece

#### MS-150™ 1-1/2" Fixed w/ Sealant

*Recommended for panel lengths less than 35 ft.*

*\*Available in stainless steel*



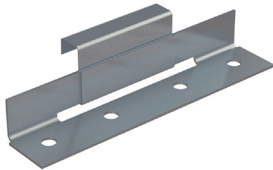
**Product Part #: AMSCLIP150**

**Product Units & Weight:** Box Quantity 250pc. / 13.0lbs per box / 0.05lbs per piece

#### MS-100™ 1" Floating Clip w/ Sealant

*Recommended for panel lengths 35 ft. or more.*

*\*Available in stainless steel*



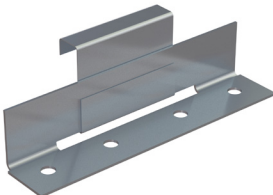
**Product Part #: AMSCLIPF100**

**Product Units & Weight:** Box Quantity 250pc. / 26.84lbs per box / 0.16lbs per piece

#### MS-150™ 1-1/2" Floating Clip w/ Sealant

*Recommended for panel lengths 35 ft. or more.*

*\*Available in stainless steel*



**Product Part #: AMSCLIPF150**

**Product Units & Weight:** Box Quantity 250pc. / 44.0lbs per box / 0.17lbs per piece



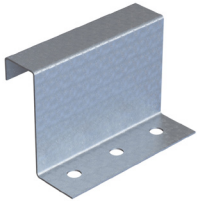
# CLIPS

## MS-200™

### MS-200™ 2" Fixed Clip w/ Sealant

*Recommended for panel lengths less than 35ft.*

*\*Also available in 2-1/4", 2-3/8", & 2-1/2" heights*



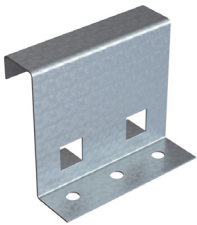
**Product Part #: AMSClip200NT**

**Product Units & Weight:** Box Quantity 250pc. / 27.66lbs per box / 0.10lbs per piece

### MS-200™ 2-1/2" Fixed Clip Elevated

*Used on metal buildings to lift the panel to allow room for insulation.*

*Recommended for panel lengths less than 35 ft.*



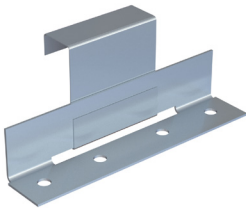
**Product Part #: AMSCLIPE250**

**Product Units & Weight:** Box Quantity 250pc. / 38.05lbs per box / 0.14lbs per piece

### MS-200™ 2" Floating Clip w/ Sealant

*Recommended for panel lengths 35 ft. or more.*

*\*Also available in 2-1/4", 2-3/8", & 2-1/2" heights*



**Product Part #: AMSClipF200NT**

**Product Units & Weight:** Box Quantity 250pc. / 47.60lbs per box / 0.18lbs per piece

### MS-200™ Floating Clip w/ Sealant - FM approved

*Recommended for panel lengths 35 ft. or more.*

*\*Required for FM approved projects*



**2" Height**

**AMSClipF200FM**

**Box Quantity 110pc. / 22.05lbs per box / 0.10lbs per piece**

**3" Height**

**AMSClipF300**

**Box Quantity 100pc. / 0.20lbs per piece**

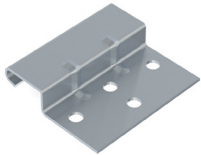
*\*Special order*

# CLIPS

## CONTOUR

### Contour Brake Form Standard Clip - 18GA 2-1/2" Wide

*Used with brake-formed siding panels.*

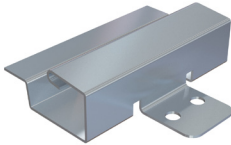


**Product Part #: ACONTOURCLIP**

**Product Units & Weight:** Box Quantity 500pc. / 45.29lbs per box / 0.09lbs per piece

### Contour Brake Form Standoff Clip - 18GA 3-1/2" Wide

*Used with brake-formed siding panels - lifts panel up 1/2" from the wall.*



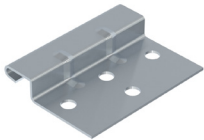
**Product Part #: ACONTOURSCLIP**

**Product Units & Weight:** Box Quantity 250pc. / 44.06lbs per box / 0.18lbs per piece

### Contour Express Standard Clip - 18GA 2-1/2" Wide

*Used with roll formed siding panels.*

*\*Roll formed*



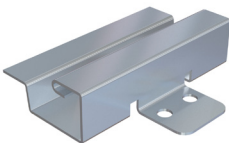
**Product Part #: ACONEXCLIP**

**Product Units & Weight:** Box Quantity 500pc. / 41.09lbs per box / 0.08lbs per piece

### Contour Express Standoff Clip - 18GA 3-1/2" Wide

*Used with roll-formed siding panels - lifts panel up 1/2" from the wall.*

*\*Roll formed*



**Product Part #: ACONEXSCLIP**

**Product Units & Weight:** Box Quantity 250pc. / 47.19lbs per box / 0.19lbs per piece

## CLIPS

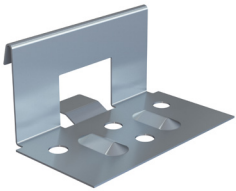
---

### SLIM-LOCK™ / EASY-LOCK™ / GUTTER HANGER / PLATE

#### Standard Slim-Lock™ 1-1/4" x 2-1/2" 20GA Fixed Clip

*Product Part #: ASMCLIP*

*Product Units & Weight: Box Quantity 250pc. /  
0.07lbs per piece*



#### Easy-Lock™/StreamLine™ High Wind Clip 24GA

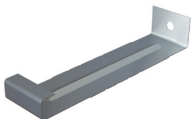
*Product Part #: AELHWCLIP*

*Product Units & Weight: 50.28lbs per box /  
0.21lbs per piece*



#### 18GA 6" Gutter Hanger

*Used together with the Box Gutter (ELBG).*

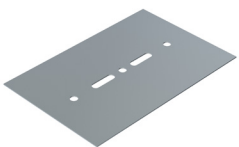


*Product Part #: AGH6*

*Product Units & Weight: Box Quantity 200pc. / 33.28lbs per box /  
0.16lbs per piece*

#### 4" x 6" Bearing Plate - Universal

*\*22ga, inquire for heavier gauges*



*Product Part #: ABP*

*Product Units & Weight: Box Quantity 200pc. / 49.33lbs per box /  
0.24lbs per piece*

# SNOW RETENTION/S-5! CLAMPS

For more information, please visit [www.s-5.com](http://www.s-5.com)

## S-5-H90 Clamp



[Click here](#) for more info

Clamp is turned on its side 90° (as shown on left) and used on our single-fold MS200™ panel.

**Product Part #: ACLAMPS5H90**

**Product Units & Weight: Box Quantity 120pc. / 50.14lbs per box / 0.62lbs per piece**

## S-5-N Clamp



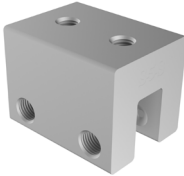
[Click here](#) for more info

Most ideal for 1" nail strip panels, like our Easy-Lock™ and StreamLine™ panels.

**Product Part #: ACLAMPS5N**

**Product Units & Weight: Box Quantity 120pc. / 50.14lbs per box / 0.62lbs per piece**

## S-5-S Clamp



[Click here](#) for more info

Created for specific use with popular snap-together profiles like our Versa-Span™, Slim-Lock™ and Clip-Lock™ panels. Can also be used with single-fold profiles like our MS100™/MS150™ panels.

**Product Part #: ACLAMPS5S**

**Product Units & Weight: Box Quantity 120pc. / 50.14lbs per box / 0.62lbs per piece**

## S-5-V Clamp



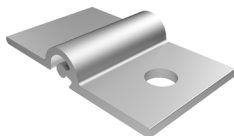
[Click here](#) for more info

Ideal for our double-fold MS100™, MS150™ and MS200™ panels.

**Product Part #: ACLAMPS5V**

**Product Units & Weight: Box Quantity 120pc. / 50.14lbs per box / 0.62lbs per piece**

## VersaClip



[Click here](#) for more info

Connects ColorGard bracket to any S-5! standard clamps.

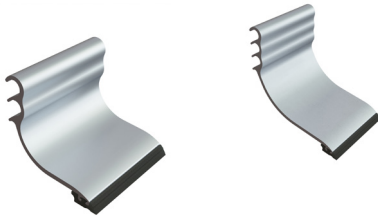
**Product Part #: AVC**

**Product Units & Weight: Box Quantity 400pc. / 26.59lbs per box / 0.09lbs per piece**

# SNOW RETENTION/S-5! PRODUCTS

For more information, please visit [www.s-5.com](http://www.s-5.com)

## SnoClip



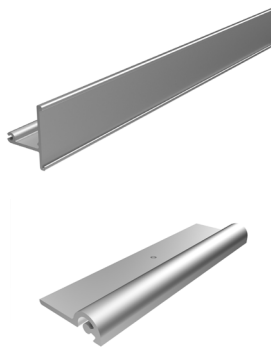
[Click here](#) for more info

*Helps slow down the migration of snow and ice beneath the ColorGard bracket.*

**SnoClip II**                      **ASN2**  
**Box Quantity 165pc. / 0.20lbs per piece**

**SnoClip III**                     **ASN3**  
**Box Quantity 105pc. / 0.20lbs per piece**

## ColorGard Bracket - Unpunched

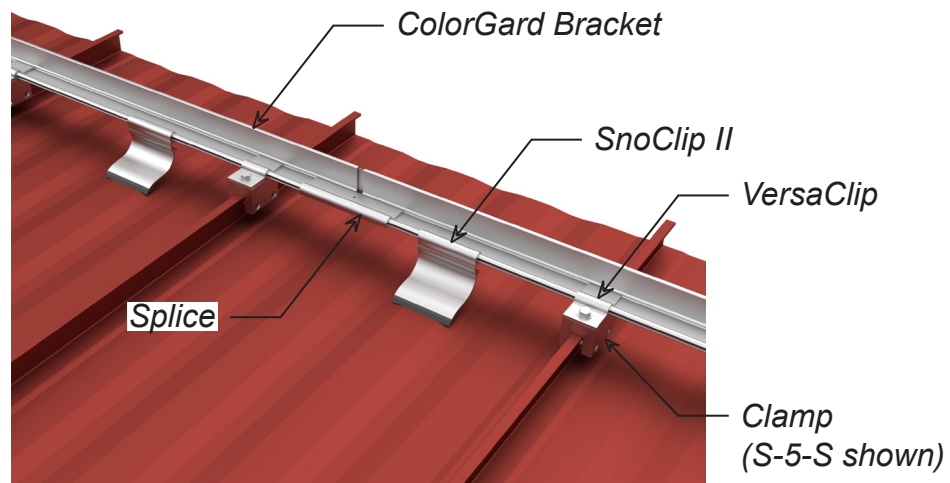


[Click here](#) for more info

*Can accommodate any seam spacing, and compatible with any S-5! snow clamps. Optional 2" color strip can be inserted to match the color of metal roof. Includes splice part, which joins adjacent ColorGard brackets to maintain structural continuity. Splice part also provides for thermal linear expansion and contraction.*

**Product Part #: ABCGU**  
**Product Units & Weight: 8 foot lengths (ColorGard Bracket) / 3.91lbs per piece**

## Snow Retention System



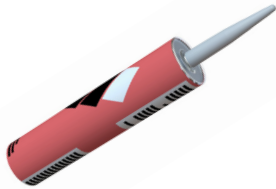


## SEALANTS

### GUNNABLE

#### Prime Adhere

*\*Available in clear, black, white*



**Product Part #: APAC-\_\_\_\_\_**

**Product Units & Weight: Box 20 pc. / 1.00lbs per tube**

### XB1500 Butyl Caulking Skinning/Curing - Grey

*Is paintable. Will harden up once fully cured, ideal for areas that are subject to minimal movement (ex: lapping flashings, pipe flashings)*



[Click here](#) for more info

**Product Part #: ABCS-GREY**

**Product Units & Weight: Box 24pc. / 21.42lbs per box / 0.86lbs per tube**

### Butyl Caulking Non-Skinning

*Is non-paintable. Permanently pliable, ideal for areas subject to movement (ex: eave, valley, longer panels, etc.).*

*\*Available in grey, black, white and dark bronze*



[Click here](#) for more info

**Product Part #: ABC-\_\_\_\_\_**

**Product Units & Weight: Box 30pc. (Black & Dark Bronze) /  
Box 24pc. (Grey & White) / 0.86lbs per tube**

### Flex Seal Caulking - Clear

*Is paintable. Recommended use for sealing small joints or cracks, up to 1/4".*



[Click here](#) for more info

**Product Part #: AFSC**

**Product Units & Weight: Box 12pc. / 9.89lbs per box / 0.86lbs per tube**

# SEALANTS

---

## GUNNABLE

### MetaLink Flexible Sealant



[Click here](#) for more info

*Silicone sealant and **non-paintable**. Used for high temperature applications, up to 400°. Also used where exposure to UV rays is possible.*

*\*Available in Clear, White, Dark Bronze, Medium Bronze, Black, Charcoal Grey, and Silver Metallic*

**Product Part #: AMLS-\_\_\_\_\_**

**Product Units & Weight: Box 12pc. / 9.96lbs per box / 1.00lbs per tube**

### DuraLink 50 Super Adhesion Sealant



[Click here](#) for more info

*Is **paintable**. Has an elastic moisture cure, ideal for areas subject to movement (ex: eave, valley, longer panels, etc.).*

*\*Available in White, Dark Bronze, Medium Bronze, Black, Grey, and Aluminum Grey. Other colors available special order.*

**Product Part #: ADLS-\_\_\_\_\_**

**Product Units & Weight: Box 24pc. / 24.63lbs per box / 1.00lbs per tube**

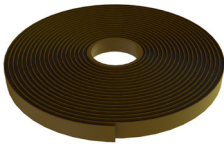
# SEALANTS

## TAPE

### Double Bead Mastic Butyl 7/8" x 3/16" x 25'

*Product Part #: ABTDBM*

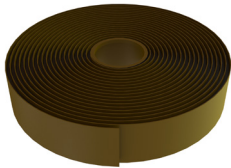
*Product Units & Weight: Box 8pc. / 17.55lbs per box / 2.00lbs per roll*



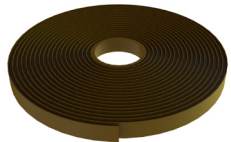
### Triple Bead Mastic Butyl 2-1/2" x 3/16" x 20'

*Product Part #: ABTTBM*

*Product Units & Weight: Box 6pc. / 27.90lbs per box / 2.00lbs per roll*



### Butyl Tape



*3/32" x 1/2" x 50'*

**ABT050-50**

*Box 20pc. / 91.0lbs per box / 2.00lbs per roll*

*1/8" x 1" x 40'*

**ABT100-40**

*Box 12pc. / 46.19lbs per box / 2.00lbs per roll*

*1/8" x 1/2" x 35'*

**ABT050**

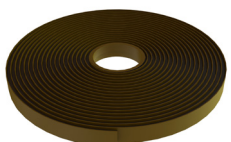
*Box 40pc. / 96.0lbs per box / 2.00lbs per roll*

*3/32" x 3/4" x 50'*

**ABT075-50**

*Box 14pc. / 41.0lbs per box / 0.84lbs per roll*

### Butyl Rope 3/16" x 25'



*Product Part #: ABT025*

*Product Units & Weight: Box 48pc. / 89.0lbs per box / 2.00lbs per roll*

# CLOSURES

## FORMED CLOSURES (closed cell foam closures)

### T-3™ 3' Formed Foam Closures



*T-3™ Inside*

**AFCT3I**

**Box 100pc. / 3.71lbs per box / 0.10lbs each**



*T-3™ Outside*

**AFCT3O**

**Box 100pc. / 5.31lbs per box / 0.10lbs each**

### Tuff Rib 3' Formed Foam Closure



*Tuff Rib Inside*

**AFCTRI**

**Box 100pc. / 3.57lbs per box / 0.10lbs each**



*Tuff Rib Outside*

**AFCTRO**

**Box 100pc. / 5.33lbs per box / 0.10lbs each**

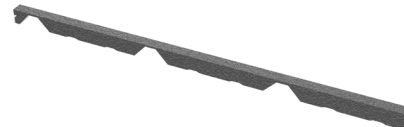
### PBR 3' Formed Foam Closure



*PBR Inside*

**AFCPBRI**

**Box 100pc. / 4.30lbs per box / 0.10lbs each**

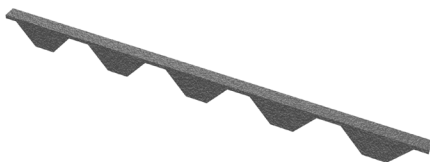


*PBR Outside*

**AFCPBRO**

**Box 100pc. / 6.97lbs per box / 0.10lbs each**

### HR-34™ 34" Formed Foam Closure w/ Adhesive



**Product Part #: AFCHR34**

**Product Units & Weight: Box 100pc. / 5.87lbs per box / 0.10lbs each**

# CLOSURES

## FORMED CLOSURES CONT.

### GR-7™ Formed Foam Closure



*GR-7™ Inside*

**AFCGR7I**

**Box 100pc. / 3.62lbs per box / 0.10lbs each**

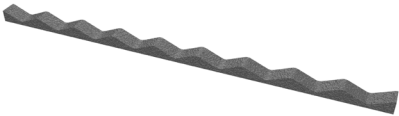


*GR-7™ Outside*

**AFCGR7O**

**Box 100pc. / 4.04lbs per box / 0.10lbs each**

### 2-1/2" Corrugated 24" Formed Foam Closure w/ Adhesive



**Product Part #: AFC2C**

**Product Units & Weight: Box 100pc. / 3.20lbs per box / 0.10lbs each**

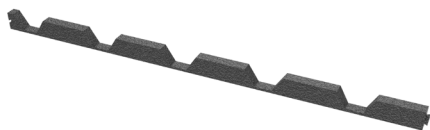
### Classic 7/8" Corrugated 37" Formed Foam Closure



**Product Part #: AFCCC**

**Product Units & Weight: Box 100pc. / 4.91lbs per box / 0.10lbs each**

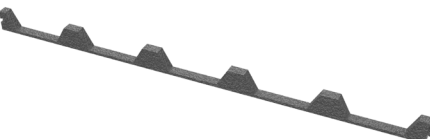
### BR-36 Formed Foam Closure



*BR-36 Inside*

**AFCBR36I**

**Box 100pc. / 0.05lbs each**



*BR-36 Outside*

**AFCBR36O**

**Box 100pc. / 5.51lbs per box / 0.05lbs each**



# CLOSURES

## FORMED CLOSURES CONT.

### 12" Easy-Lock™ Foam Closure (36") Closed Cell

*Product Part #: AFCEL*

*Product Units & Weight: Box 100 pc. / 6.69lbs per box / 0.30lbs each*



### StreamLine™ or 16" Easy-Lock™ Foam Closure (32") Closed Cell

*Product Part #: AFCSL*

*Product Units & Weight: Box 100pc. / 6.53lbs per box / 0.10lbs each*

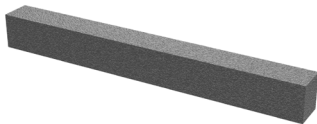


### MS-200™ and Versa-Span™ Foam Closure

*18" x 2" x 1-3/4"*

**AFCMSVS**

*Box 50pc. / 5.09lbs per box / 0.15lbs each*



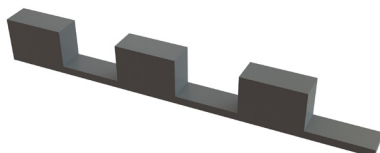
*1-5/8" x 2-1/8" x 10'*

**AFCMSVS10**

*Box 100pc. / 0.15lbs each*

### Contour Closure 1-1/4" C-5

*\*Other profiles available, special order*



*Product Part #:*

*Product Units & Weight: Box 100pc. / 3.58lbs per box / 0.05lbs each*

# CLOSURES

## VENTED CLOSURES

### 12" Easy-Lock™ Vented Ridge Foam Closure (36")



[Click here](#) for more info

**Product Part #: AFCELV**

**Product Units & Weight: Box 25pc. / 5.55lbs per box / 0.10lbs each**

### StreamLine™ or 16" Easy-Lock™ Vented Foam Closure (32")



[Click here](#) for more info

**Product Part #: AFCSLV**

**Product Units & Weight: Box 25pc. / 5.27lbs per box / 0.15lbs each**

### Snap-Z



A vented closure that is pre-punched and has pre-applied butyl tape. Available for our Easy-Lock™ and select MS150 panels (Versa Span and MS200 are available for special order).

**Product Part #: ASZEL12, ASZEL16, ASZMS15012, ASZMS15016**

**Product Units & Weight: Box 50pc. / Weight varies per closure**

### Versa Vent Universal Closure



[Click here](#) for more info

Universal closure used with a wide variety of panels including PBR, Tuff Rib, T-3™, GR-7™, Classic 7/8" Corrugated™, Classic V Rib™, BR-36 and HR-34™

1" x 10'

**AFCVV**

**Box 10pc. / 5.25lbs per box / 0.05lbs each**

1-1/4" x 10'

**AFCVV.25**

**Box 10pc. / 5.79lbs per box / 0.15lbs each**

### Vista Vent Universal Foam Closure 1" x 2" x 20"



[Click here](#) for more info

Universal vented closure, able to fit a range of panels.

**Product Part #: AFCVI20**

**Product Units & Weight: 2 Rolls at 10' / 1.00lbs per roll**

# PIPE FLASHINGS

## STANDARD - Colors & Square Base special order



*\*Special order - please inquire for color*

#1 - 1/4" - 2"

**APF1**

**Box 15pc. / 3.22lbs per box / 0.20lbs each**

#2 - 1-3/4" - 3-1/4"

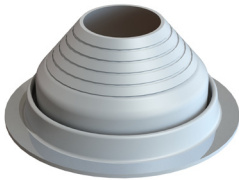
**APF2**

**Box 15pc. / 4.98lbs per box / 0.35lbs each**

#3 - 2-1/4" - 4"

**APF3**

**Box 15pc. / 7.08lbs per box / 0.50lbs each**



#4 - 3" - 6"

**APF4**

**Box 10pc. / 6.56lbs per box / 0.80lbs each**

#5 - 4" - 7"

**APF5**

**Box 10pc. / 9.27lbs per box / 1.02lbs each**

#6 - 5" - 9"

**APF6**

**Box 10pc. / 12.90lbs per box / 1.50lbs each**



*\*Special order - please inquire for square base*

#7 - 6" - 11"

**APF7**

**Box 10pc. / 12.07lbs per box / 1.85lbs each**

#8 - 7" - 13"

**APF8**

**Box 5pc. / 9.61lbs per box / 2.17lbs each**

#9 - 10" - 18"

**APF9**

**Box 5pc. / 6.00lbs each**

[Click here](#) for more info

## HIGH TEMP RATING - Up to 390°

#4 - 3" - 6"

**APFHT4**

**Box 10pc. / 6.79lbs per box / 0.73lbs each**

#6 - 5" - 9"

**APFHT6**

**Box 10pc. / 13.23lbs per box / 1.40lbs each**



#7 - 6" - 11"

**APFHT7**

**Box 10pc. / 1.85lbs each**

#8 - 7" - 13"

**APFHT8**

**Box 5pc. / 9.75lbs per box / 2.17lbs each**

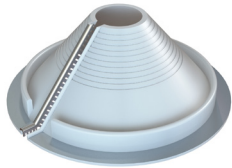
#9 - 10" - 18"

**APFHT9**

**Box 5pc. / 5.98lbs each**

# PIPE FLASHINGS

## RETROFIT DEKTITE



*Small - 3/4" - 2-3/4"*

*Medium - 2" - 7-1/4"*

*Large - 3-1/4" - 10"*

**APFRS**

**Box 5pc. / 1.84lbs per box / 0.50lbs each**

**APFRM**

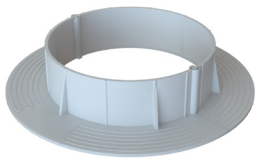
**Box 5pc. / 5.45lbs per box / 1.00lbs each**

**APFRL**

**Box 5pc. / 1.92lbs each**

## CHEMLINK PIPE FLASHINGS

### E-Curb



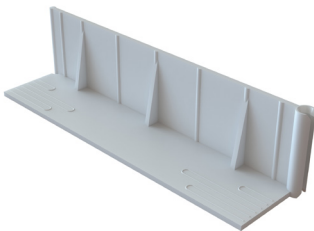
[Click here](#) for more info

*Also available in 2"-6" and 9" diameter rounds (inquire for other configurations). Used in combination with MetaLink & DuraLink 50 sealants.*

**Product Part # AECR**

**Product Units & Weight: Box quantity varies / 0.20lbs each piece**

### Long Straight

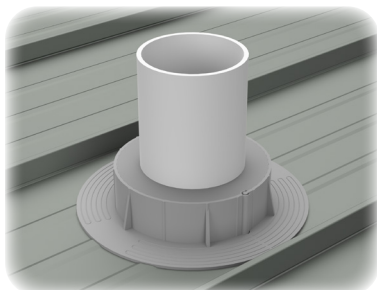


[Click here](#) for more info

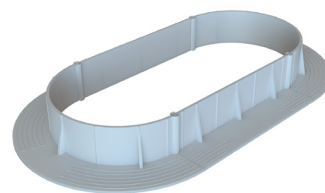
*Used in combination with E-Curb to stretch over multiple pipes. Available in 3" and 8" lengths. Used in combination with MetaLink & DuraLink 50 sealants.*

**Product Part # AECS**

**Product Units & Weight: Box 16pc. / 0.20lbs each**



*Leave 1" gap between E-Curb and pipe. Fill gap with sealant.*



*E-Curb and Straights in use together.*

# SKYLIGHT PANELS

## POLYCARBONATE

### Tuff Rib

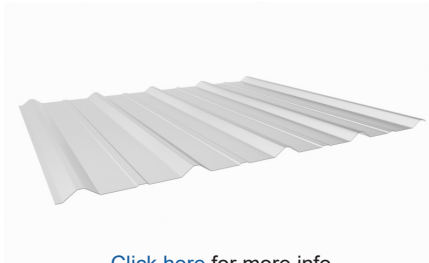


[Click here](#) for more info

Available in 0.8mm clear, white & grey  
Clear & white lengths: 2', 2'6", 10', 12', 16'  
Grey only lengths: 24'

**Product Part #: APCTRC-FT, APCTRW-FT, APCTRG-FT**  
**Product Units & Weight: linear foot / 1.20lbs per foot**

### T-3™



[Click here](#) for more info

Available in 0.8mm clear & white  
Lengths: 2', 2'6", 24'

**Product Part #: APCT3C-FT, APCT3W-FT**  
**Product Units & Weight: linear foot / 1.20lbs per foot**

### PBR



[Click here](#) for more info

Available in 0.8mm clear & white  
Lengths: 10', 12', 16'

**Product Part #: APCPBRC-FT, APCPBRW-FT**  
**Product Units & Weight: linear foot / 1.20lbs per foot**



# SKYLIGHT PANELS

---

## FIBERGLASS

### Tuff Rib

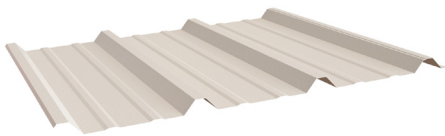


Available in 5 oz. white  
Lengths: 24' only

**Product Part #: AFGTR5W**

**Product Units & Weight: linear foot / 1.20lbs per foot**

### PBR

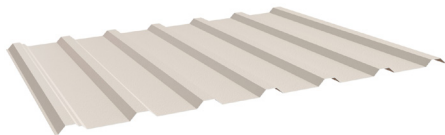


Available in 8 oz. white  
Lengths: 10'8", 12', 16'

**Product Part #: AFGPBR8W**

**Product Units & Weight: linear foot / 1.70lbs per foot**

### GR-7™



Available in 5 oz. white  
Lengths: 24'

**Product Part #: AFGGR75W**

**Product Units & Weight: linear foot / 1.20lbs per foot**

### 2-1/2" Corrugated



Available in 8 oz. white & 5 oz. clear  
Length: 12'

**Product Part #: AFG2C5W, AFG2C5C**

**Product Units & Weight: linear foot / 1.20lbs per foot**

### Classic 7/8" Corrugated™



Available in 8 oz. frost  
Length: 12'

**Product Part #: AFGCC8F**

**Product Units & Weight: linear foot / 1.70lbs per foot**

## MISCELLANEOUS

### Kynar Touch Up Paint Pen



Standard Kynar 500® Colors: Glacier White, Zinc Grey, Sterling Grey, Charcoal Grey, Tile Red, Black, Forest Green, Weathered Zinc, Medium Bronze, Dark Bronze, Pacific Blue, Pine Green, Sage Green, Sandstone, Saddle Tan, Stone White, Tahoe Blue, Clear

*\*Other colors special order at 25pens minimum*

**Product Part #: APP**

**Product Units & Weight: 1.49lbs per box / 0.50lbs per pen**

### 16oz Spray Can Paint (Industrial Enamel)



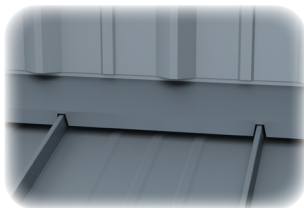
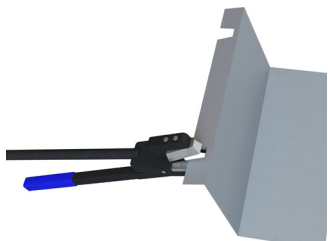
Do not apply directly onto panel - Shake well and spray into a small container. Apply to scratch with a fine brush or toothpick, just filling in the scratch

*\*Verify paint type*

**Product Part #: APSC**

**Product Units & Weight: 10.77lbs per box / 1.00lbs per can**

### Notching Tool for Easy-Lock™ Standing Seam



**Product Part #: ANOTCH**

**Product Units & Weight: Each / 2.54lbs per tool**

### Upending Tool



Used to fold panel up to create a dam or fold panel down to notch. All upenders 1" and below are used for notching. All upenders above 1" are used for upending/creating a dam.

Sizes: 1/2"x11", 1"x11", 1-3/4"x11", 2"x11", 1-3/4"x13", 2"x13", 1/2"x15", 1"x15", 1-1/2"x15", 1"x17", 1-3/4"x17", 2"x17", 1"x18", 1-1/2"x19", 1"x19"

**Product Part #: AUPEND**

**Product Units & Weight: Each / Weight varies by size**

## MISCELLANEOUS

---

### **MS150™ ESE Hand Crimper (Single Lock)**

*Product Part #: ACRIMPER150S*

*Product Units & Weight: Each / 3.00lbs*



### **MS200™ ESE Hand Crimper (Single Lock)**

*Product Part #: ACRIMPER200S*

*Product Units & Weight: Each / 3.00lbs*



### **MS150™ Crimper Combo**

*Product Part #: ACRIMPER150COMBO*

*Product Units & Weight: Each / 10.45lbs*



### **MS200™ Crimper Combo**

*Product Part #: ACRIMPER200COMBO*

*Product Units & Weight: Each / 3.00lbs*



## DOOR TRACK HARDWARE

---

For more information on our Door Track Accessories, please visit here: [taylormetal.com/accessories/](http://taylormetal.com/accessories/)

### 7" Jamb Latch



Zinc plated steel construction and adjustable design. Holds door firmly against jamb. Can be used for either right or left handed application.

**TMP # - H7JL / CNB # - 715432**  
**Product Units & Weight: 1.22lbs each**

### Gate, Stall and Door Latch



Guides the door along the building, reduces the amount of door sway.

**TMP # - HGSDL / CNB # - 710586**  
**Product Units & Weight: 1.48lbs each**

### Adj. Single Bracket for Bolt Hung



Angled track bracket used to mount Studmount Key-Hole Track. The single track bracket is used to mount a single run of track. Brackets should be placed every two feet.

**TMP # - HSB / CNB # - 712138**  
**Product Units & Weight: 0.64lbs each**

### Adj. Double Bracket for Bolt Hung



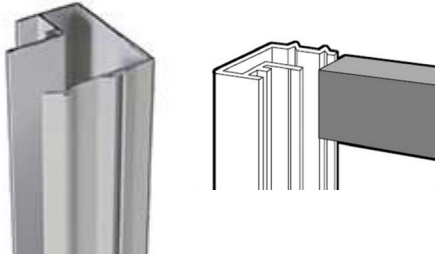
Angled track bracket used to mount Studmount Key-Hole Track. The double track bracket is used to mount a double run of track. Brackets should be placed every two feet.

**TMP # - HDB / CNB # - 712137**  
**Product Units & Weight: 1.34lbs each**

# DOOR TRACK HARDWARE

For more information on our Door Track Accessories, please visit here: [taylormetal.com/accessories/](http://taylormetal.com/accessories/)

## (200B) Side Rail



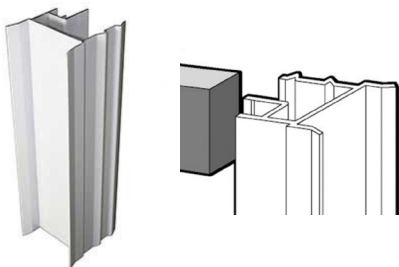
8'	<b>TMP # - HDKSR8</b>	<b>CNB # - 724300</b>	<b>6.08lbs</b>
10'	<b>HDKSR10</b>	<b>724304</b>	<b>7.60lbs</b>
12'	<b>HDKSR12</b>	<b>724308</b>	<b>9.12lbs</b>
14'	<b>HDKSR14</b>	<b>724312</b>	<b>10.64lbs</b>
16'	<b>HDKSR16</b>	<b>724316</b>	<b>12.16lbs</b>
20'	<b>HDKSR20</b>	<b>724740</b>	<b>15.20lbs</b>

## (244) Bottom Rail



10'	<b>TMP # - HDKBR10</b>	<b>CNB # - 724564</b>	<b>10.0lbs</b>
12'	<b>HDKBR12</b>	<b>724565</b>	<b>12.0lbs</b>
16'	<b>HDKBR16</b>	<b>724567</b>	<b>16.0lbs</b>

## (216B) Double Couple



10'	<b>TMP # - HDKDC10</b>	<b>CNB # - 724324</b>	<b>9.0lbs</b>
12'	<b>HDKDC12</b>	<b>724328</b>	<b>10.80lbs</b>
14'	<b>HDKDC14</b>	<b>724332</b>	<b>12.60lbs</b>
16'	<b>HDKDC16</b>	<b>724336</b>	<b>14.40lbs</b>

## Steel Horizontal Girt



Provides horizontal support on sliding door frames. Overall thickness of steel girt is 3-1/2" x 2".

\*Available in 16', 20' and 24' lengths

**TMP # - HDKSH / CNB # - (16') 724861, (20') 724862, (24') 713854**

**Product Units & Weight: 1.3lbs per linear foot**

# DOOR TRACK HARDWARE

For more information on our Door Track Accessories, please visit here: [taylormetal.com/accessories/](http://taylormetal.com/accessories/)

## Double Door Stop/Guide

Reduces the amount of door sway, helps prevent wind damage and provides easier door operation.



**Product Part #: HDSG**

**Product Units & Weight: 1.90lbs each**

## Offset Adj Stay Roller

Adjusts for doors from 5/16" to 3-5/8". Mounting holes countersunk to protect door finish. 8 gauge zinc plated steel with black 2" diameter non-marring roller.



**TMP # - HOASR / CNB # - 710806**

**Product Units & Weight: 1.31lbs each**

## VR Door Stop

Zinc plated steel construction and made from 11-gauge steel. Adjusts for doors 3" to 4-1/2". Guides the door along the building, reduces the amount of door sway.



**TMP # - HVRDS / CNB # - 715432**

**Product Units & Weight: 1.32lbs each**

## Jumbo Door Pull

Assists with door opening and closing; a handle attached to door panels.



White Jumbo Door Pull      **TMP # - HJDP**      **CNB # - 710654**      **0.35lbs**

Galvanized Jumbo Door Pull      **HJDP-GA**      **710653**      **0.33lbs**



# DOOR TRACK HARDWARE

For more information on our Door Track Accessories, please visit here: [taylormetal.com/accessories/](http://taylormetal.com/accessories/)

## Lag Bolt



The 3/8" x 2" bolt is typically used with the Studmount. The 5/16" x 1-1/2" bolt is typically used with the Facemount.

3/8" x 2"	<b>HLAG</b>	<b>0.05lbs</b>
5/16" x 1-1/2"	<b>HLAG516</b>	<b>0.03lbs</b>

## Metal Center Snugger



Prevents door panels from moving or rattling when closed and tightens as the door moves.

**TMP # - HMCS / CNB # - 711200**  
**Product Units & Weight: 2.06lbs each**

## Delrin 9-1/2" Pendant Trolley Bagged Pair



Ideal for framed door panel projects, used with key-hole track system. Four-way offset adjustable pendant bolt for doors not weighing more than 600lbs.

**TMP # - HPT / CNB # - 713999**  
**Product Units & Weight: 3.80lbs each**

## Delrin Adj Strap Trolley Bagged Pair



Are attached to the front face of wood panel doors, with bolts that go through the panel for a solid hold. Wood doors can be up to 1-1/2" thick and not weighing more than 600lbs.

**TMP # - HST / CNB # - 715608**  
**Product Units & Weight: 5.16lbs each**

# DOOR TRACK HARDWARE

For more information on our Door Track Accessories, please visit here: [taylormetal.com/accessories/](http://taylormetal.com/accessories/)

## Keyhole Track Facemount - 2lbs per foot



8' Keyhole	<b>TMP # - HRTF8</b>	<b>CNB # - 643836</b>
10' Keyhole	<b>HRTF10</b>	<b>643837</b>
12' Keyhole	<b>HRTF12</b>	<b>711061</b>
16' Keyhole	<b>HRTF16</b>	<b>711063</b>
20' Keyhole	<b>HRTF20</b>	<b>711065</b>
22' Keyhole	<b>HRTF22</b>	
24' Keyhole	<b>HRTF24</b>	

## Keyhole Track Studmount - 2lbs per foot



8' Keyhole	<b>TMP # - HRTS8</b>	<b>CNB # - 643836</b>
10' Keyhole	<b>HRTS10</b>	<b>643837</b>
12' Keyhole	<b>HRTS12</b>	<b>711061</b>
16' Keyhole	<b>HRTS16</b>	<b>711063</b>
20' Keyhole	<b>HRTS20</b>	<b>711065</b>
22' Keyhole	<b>HRTS22</b>	
24' Keyhole	<b>HRTS24</b>	

## End Caps, Bagged Pair



Attaches to open ends of track, preventing birds from nesting as well as dirt and debris build-up.

**TMP # - HEC / CNB # - 711489**  
**Product Units & Weight: 0.38lbs each**

## Splice Collar



Galvanized collar that combines two pieces of Keyhole track. Features locking lugs to hold track firmly in place and prevent rotating.

**TMP # - HSPLICE / CNB # - 465101**  
**Product Units & Weight: 0.50lbs each**

# DOOR TRACK HARDWARE

For more information on our Door Track Accessories, please visit here: [taylormetal.com/accessories/](http://taylormetal.com/accessories/)

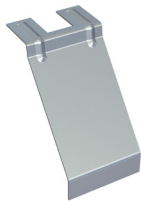
## Adj. Flashing Retainer (DILB)



*This Adjustable Flashing Retainer (DILB) is used in conjunction with both the Single and Double Track Brackets to enhance the ability of using a track cover. Should be placed every two feet.*

**TMP # - HDILB / CNB # - 712136**  
**Product Units & Weight: 0.28lbs each**

## Flashing Bracket (SILB)



*A unique bracket design for use with Facemount Keyhole Track. Bracket installs in slots of facemount brackets after installation of track.*

**TMP # - HSILB / CNB # - 714777**  
**Product Units & Weight: Box 50pc / 15.90lbs per box / 0.32lbs each**

## Center Door Guide / Stop



*Center Door Guide/Stop  
(Floor Mt)*

*Guides the door along the building,  
reduces the amount of door sway.*  
**TMP # - HCDGSF / CNB # - 711271**  
**Box 1pc. / 7.31lbs each**



*Center Door Guide/Stop  
(Post Mt)*

*Guides the door along the building,  
reduces the amount of door sway.*  
**TMP # - HCDGSP / CNB # - 714359**  
**Box 4pc. / 21.37lbs per box / 5.21lbs each**







**TAYLOR**

---

**METAL PRODUCTS**

---

**QUALITY PRODUCTS  
EXCEPTIONAL SERVICE**

**SALEM BRANCH**

4566 Ridge Dr. NE  
Salem, OR 97301

Office: 503-581-8338  
Toll Free: 1-800-574-1388  
Fax: 503-581-6877

**SACRAMENTO BRANCH**

5711 Perrin Ave  
McClellan, CA 95652

Office: 916-318-8844  
Toll Free: 1-800-574-1388  
Fax: 916-993-4123

**SPOKANE BRANCH**

1010 N Nelson St.,  
Spokane, WA 99202  
[www.go-rsp.com](http://www.go-rsp.com)

Office: 509-535-8667  
Toll Free: 800-238-4057  
Fax: 509-535-8682

**AUBURN BRANCH**

2601 C St SW,  
Auburn, WA 98001

Office: 206-900-9923  
Toll Free: 1-800-574-1388  
Fax: 253-804-3545

**RIVERSIDE BRANCH**

4880 Felspar St.  
Riverside, CA 92509

Office: 323-407-7457  
Toll Free: 1-877-504-1594