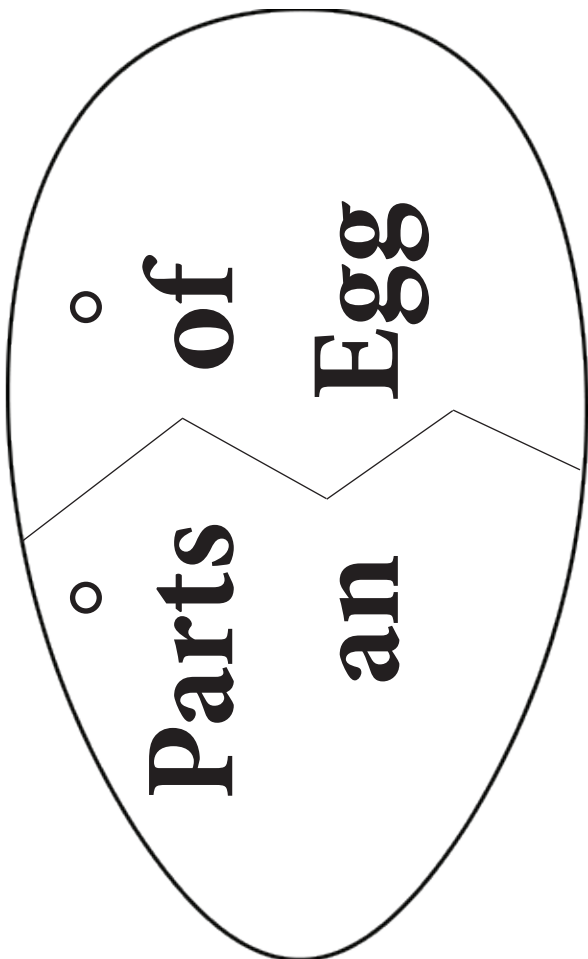
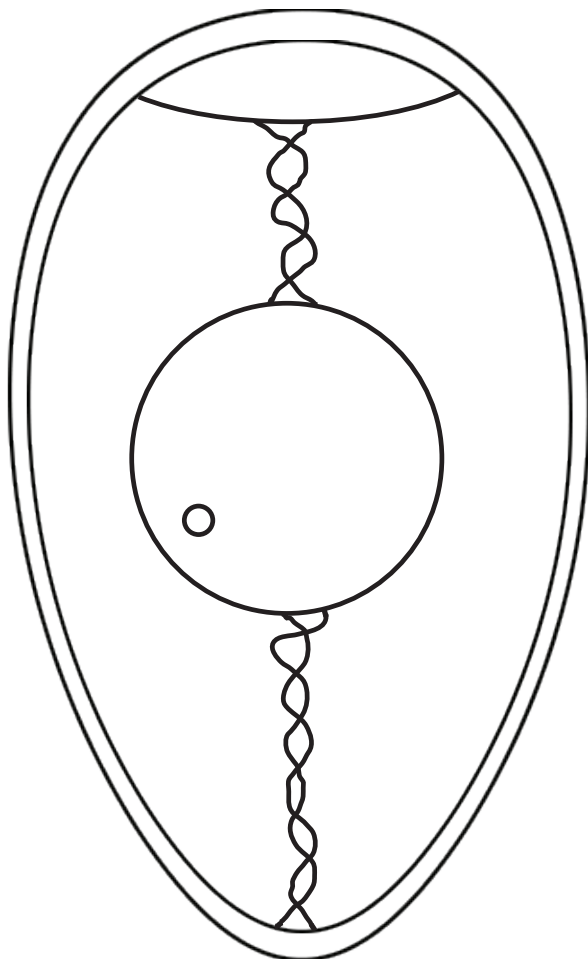


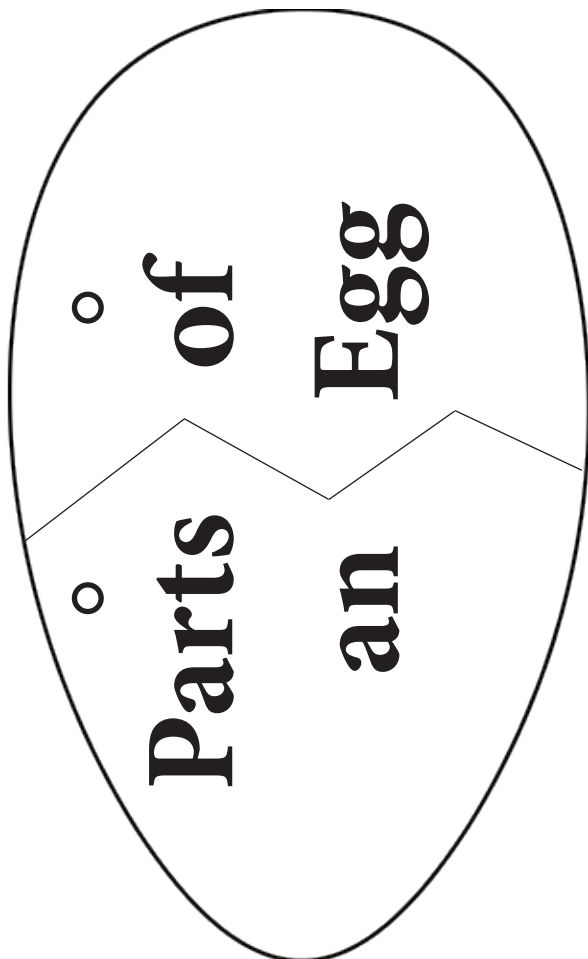
Front Cover



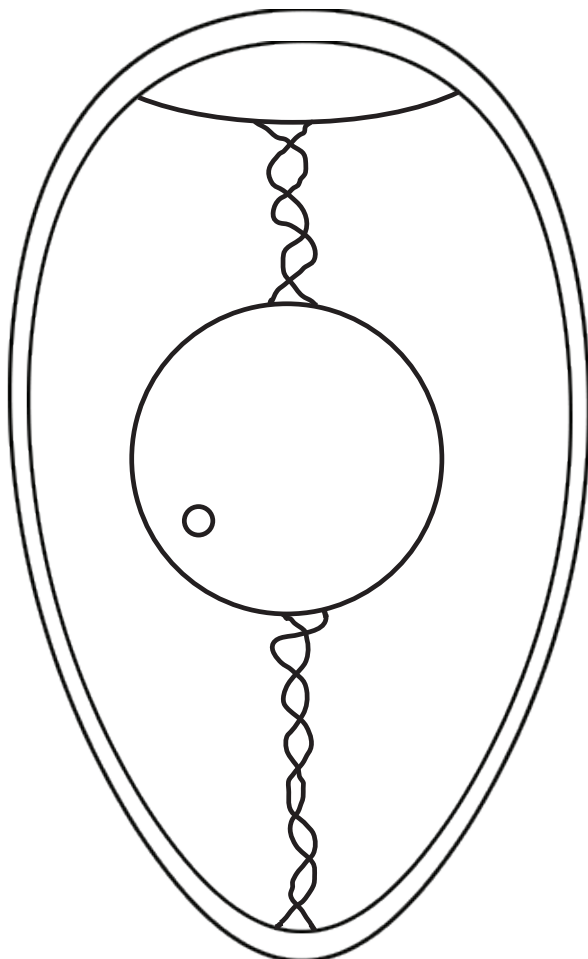
Back Cover



Front Cover



Back Cover



Located between the inner and outer membranes at the large end of the egg, this part of the egg holds oxygen for the chick to breathe.

albumen

These cords keep the yolk floating in the center of the albumen.

yolk

This part of the egg cushions the egg yolk floating within it and is the main source of protein and water for the embryo.

chalaza

These parts of the egg keep bacteria from entering the egg and help to slow evaporation of moisture from the egg.

germinal disc

This part of the egg provides food for the embryo. It is made up of fats, carbohydrates, proteins, and minerals.

shell

This is the white spot on the yolk. The female's genetic material is found here.

membranes

This part of the egg has more than 7,000 tiny pores that allow oxygen to pass into the egg and carbon dioxide to pass out.

air cell