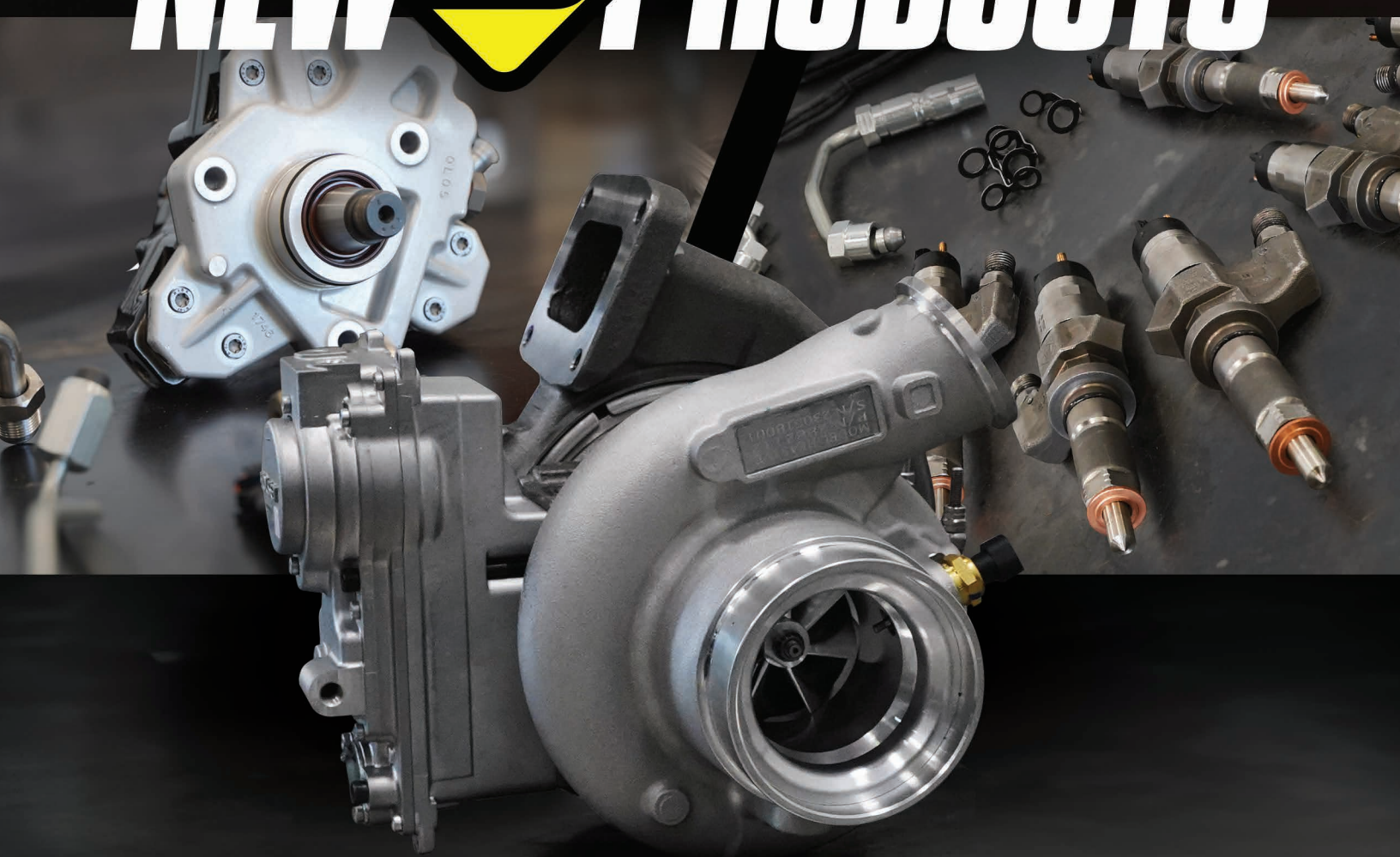




WINTER 2023/24

NEW PRODUCTS



FIND MORE INFO ON ALL THESE NEW PRODUCTS AT:
BDDIESEL.COM

NEW FOR THE GAS MARKET!

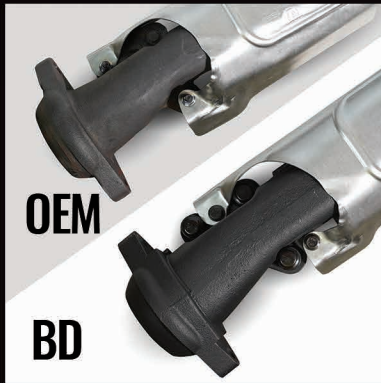
HEMI 5.7L EXHAUST MANIFOLD KIT

2009-2022 DODGE/RAM 1500*
2009-2018 DODGE/RAM 2500
2013/2018 DODGE RAM 3500
2011-2015 CAB & CHASSIS

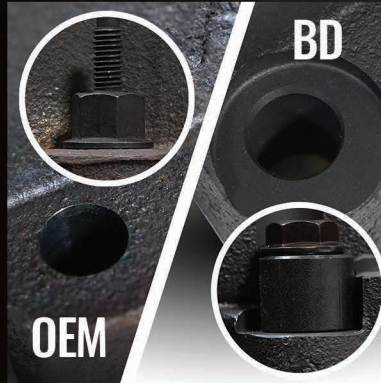
1041463
1041464
1041465

- Prevent exhaust leaks from common OE manifold bolt and manifold failure.
- Longer fasteners supplied with spacers resist breaking due to thermal cycling.
- BD manifolds are made of high-silicon ductile iron, with thick uniform walls for increased resistance to warping.
- Kit includes all fasteners and gaskets for install.
- Left and Right sides available separately or together as a complete kit.

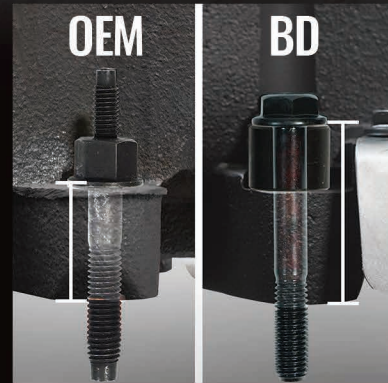
HEAT SHIELD RELOCATION
REDUCES BOLT STRESS



MACHINED BOLT
MATING SURFACES



INCREASED BOLT CLAMP
LENGTH REDUCES FASTENER
STRESS DURING HEAT CYCLING.



*2019+ CLASSIC ONLY

NEW FOR THE GAS MARKET!

SCREAMER 3.5L TWIN KIT

2011-2012 & 2013-2016 FORD
F-150 3.5L ECOBOOST

- Drops into factory location and mounts using factory hardware.
- Increases available air flow for performance.
- Larger 40.5mm Billet Compressor wheel.
- Includes new gaskets and studs for install.
- Wastegate tested and calibrated.
- VSR high speed balanced.

1047620
1047621



24-VALVE CUMMINS SCREAMER HX35

1998.5-2002 CUMMINS 5.9L

- Larger 58mm Billet Compressor Wheel
- Drops into factory location and mounts using factory hardware
- Includes new gaskets and studs for install
- Wastegate tested and calibrated
- VSR High Speed Balanced
- Includes exhaust downpipe adapter
- More boost, lower drive pressure, and decreased peak EGT's
- No Core Charge!

**A NEW SCREAMER
FOR AN OLD
WORKHORSE.**



1045758

SCREAMER TURBO DODGE 6.7L

CUMMINS 2019-UP

- Drops in to the stock location and works with stock emissions equipment.
- Ballistic Billet 64.5mm 7+7 blade compressor wheel.
- Low MOI QST 70mm 12 blade turbine wheel for quicker turbo response and increased efficiency.
- Each actuator is calibrated and tested prior to shipping.
- Up to 690hp with supporting modifications.

**CAPABLE
OF UP TO
690HP**



1045772

1045844



**CAPABLE
OF UP TO
680HP**

SCREAMER TURBO DURAMAX 6.6L L5P

DURAMAX 2017-2022

- Stock appearing drop in turbo, will work with stock emissions equipment.
- Larger 66.2mm billet compressor wheel.
- Larger 67mm turbine wheel.
- Increased airflow - up to 80lb/min.
- Reduced EGT's at increased power output.
- Up to 680hp with supporting modifications.
- Includes BD's black powder coated stainless steel Turbo Intake Horn.

SCREAMER TURBO MANIFOLD PACKAGE

6.7L CUMMINS 2007.5-2018

- 50-State legal turbo with CARB EO No D-553-5.
- Manifold is fully EGR compatible.
- Turbo drops in stock location, supports up to 690HP modifications.
- Ballistic Billet 64.5mm 7+7 blade compressor, QST 70mm 12 blade turbine with reduced MOI and blade thickness.
- Calibrated and tested actuator, VSR high-speed balanced.
- Pre-drilled manifold with gasket, bolt, and spacer kits available separately.
- Manifolds cast high-silicon ductile iron withstands extreme temperature cycling.
- Thick-walled casting, integral slip joint prevent cracking, and exhaust leaks.

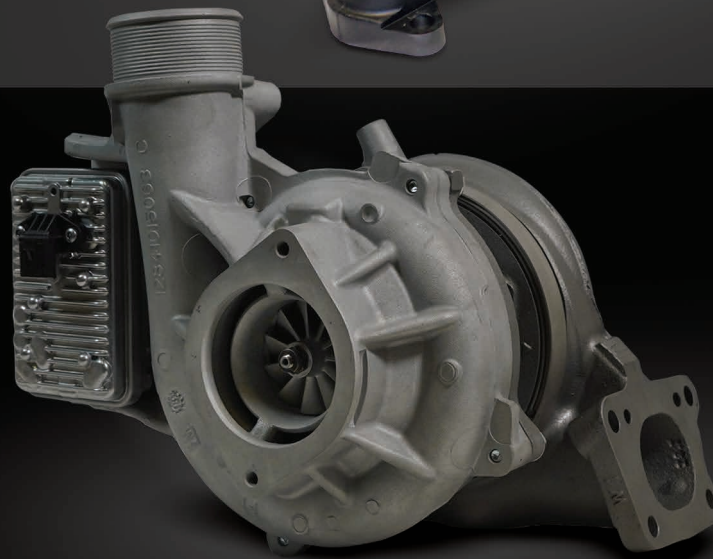


1045870
1045871

L5P REMAN TURBO

2017-2022 DURAMAX L5P

- Drop-in stock turbo.
- VSR high speed balanced.
- Comes with actuator and gaskets.
- Each actuator is calibrated and tested prior to shipping.



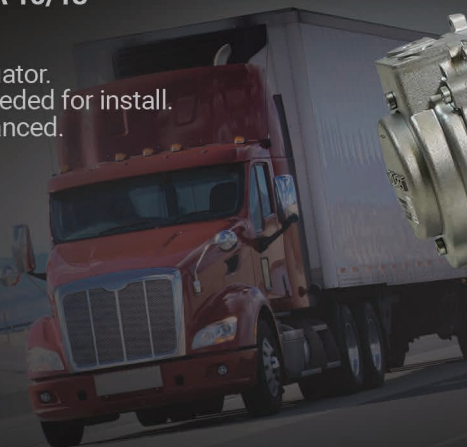
1045845
1045846

HEAVY DUTY HE451VE/HE400VG TURBO

CUMMINS ISX15 EPA 10/13

- Drop-in stock turbo.
- Genuine Holset Actuator.
- No modifications needed for install.
- VSR high speed balanced.
- No core charge.

1045880



L5P TURBO INTAKE HORN

6.6L DURAMAX L5P 2017-2022

- Drop-in component compliments larger turbos.
- Perfect compliment for an upgraded turbo.
- Increased flow, less restriction.
- Manufactured from 3-1/2" 409 series stainless tubing.
- Black powder coat finish.
- Tig welded construction.



1045630

FORD 6.7L CAC PIPE KIT

6.7L POWER STROKE 2011-2016

- Replaces plastic factory pipe which is prone to failure.
- Black powder-coated steel charge pipe.
- CNC machined aluminum throttle body adapter.
- Retains factory throttle valve, no tuning required.

1047038



SINGLE SIDE MANIFOLDS

Our heavy-duty exhaust manifolds designed for maximum durability and longevity are now available as single side units! Pick up a passenger or drivers-side manifold made of coated heavy walled high-silicon ductile cast iron with no need for extensive cleaning and machine work to fix warping and distortion issues that often plague traditional manifolds.

DS 1041485
PS 1041486



6.0L POWERSTROKE 2003-2007

- Coated to resist corrosion.
- Pre-drilled for pyrometer probes.

PS/DS 1041487



6.4L POWERSTROKE 2008-2010

- Pre-drilled for pyrometer probes and pressure gauges.
- Includes 6 exhaust studs (mates to up-pipe flange).
- Cylinder head to exhaust manifold gaskets included.

DS 1043003
PS 1043004



3.5L ECOBOOST 2011-2016

- Utilize 3 additional exhaust stud locations.
- 15mm longer exhaust studs + spacers.
- New studs, spacers, and nuts included.

FORD 6.7L HIGH IDLE CONTROL

2023+ SUPERDUTY F250/F350/F450/F550/F600

- Easy to install.
- Plugs into factory connector without any splicing required.
- Faster engine warm-ups.
- Adjustable 900-3000 RPM Range.
- Great to use for remote starters, PTO's and extended idling applications.
- Bypasses Auto Engine Off functions.



1036613

HEAVY DUTY ELECTRONIC PAS

2014-2023 CUMMINS ISX
2008-2023 DETROIT DIESEL DD13 / DD15 / DD16
2017-2023 MACK MP8 / VOLVO D13

- Safely turns off the engine if over speeding.
- Activated automatically or manually.
- Automatically resets after shut down.
- Plug and play module uses factory plugs and sensors.
- Does not require any engine modification.
- Short install/ removal time. Can be returned to OEM specs for leased vehicles.



1036770
1036772
1036771

ULTIMATE SHIFT: OUR NEW TRANSMISSION LINE

We take pride in our long-standing legacy of crafting superior transmissions for light duty trucks. Over the years we have been busy expanding BD's family of transmission products. We've got options for Chevy/GM, Dodge/RAM, and Ford, covering a wide spectrum of applications and horsepower ratings.



ROADMASTER TRANSMISSION

Reliable and performance-enhancing, RoadMaster transmissions by BD are perfect for stock or lightly modified diesel pickup trucks, providing improved performance and reliability for **400-500hp** applications



TOWMASTER TRANSMISSION

BD's TowMaster transmissions offer enhanced durability and performance for towing and demanding applications in stock or modified trucks with **500-600hp**, featuring increased clutch count and high line pressure.



TORQUEMASTER TRANSMISSION

Designed for high-performance diesel pickup trucks, TorqueMaster transmissions from BD exceed **600-700+hp** applications, providing exceptional power with billet upgrades, increased clutch count, and elevated line pressure.



DODGE/RAM ROADMASTER

1064224
1064222
1064304
1064302



ROADMASTER 68RFE TRANSMISSION & CONVERTER PACKAGE

6.7L CUMMINS 2007.5-2022

Upgraded valve body with BD gasketed separator plate solves common cross leak issues that lead to clutch failure. Perfect transmission for stock or mildly tuned trucks with stock or stock-plus injectors!

- BD protect68 valve body.
- BD pressure enhancer for up to 220psi line pressure.
- BD deep sump oil pan.
- Stock transmission clutch counts.
- Billet spring retainer, 4C.
- BD ProForce Torque Converter.

ROADMASTER
TRANSMISSION

ROADMASTER 48RE TRANSMISSION & CONVERTER PACKAGE

2003-2007 CUMMINS 5.9L

An original 48RE transmission, equipped with an enhanced valve body. A deep sump aluminum pan offers increased fluid capacity and superior cooling. This transmission is an ideal choice for both stock or mildly tuned trucks equipped with either stock or stock-plus injectors!

- BD's deep reservoir oil pan.
- Stock transmission clutch counts.
- BD's ProForce Torque Converter.
- BD upgraded valve body.

1064142SS
1064144SS
1064202SS
1064204SS

ROADMASTER
TRANSMISSION



POWER STROKE ROADMASTER

ROADMASTER 6R140 TRANSMISSION & CONVERTER PACKAGES

2011-2019 POWER STROKE 6.7L

This mildly upgraded transmission features OE clutch counts, an OE Valve Body, BD's Deep Pan, but comes at a lower cost than the Ford OEM option. Additionally, the package even includes a BD Transmission Pressure Controller for improved line pressure and holding power.

- Stock Reman Transmission with new OEM Valve body.
- Retains OE Clutch Count.
- BD pressure enhancer for up to 300psi line pressure.
- BD deep sump oil pan.
- Stock transmission clutch counts.
- BD ProForce Torque Converter.

ROADMASTER
TRANSMISSION

1064524SS
1064534SS



ROADMASTER 10R80 TRANSMISSION & CONVERTER PACKAGES

2018-2020 FORD 3.5L/5.0L

Built for stock replacement and mildly upgrade trucks, the 10R80 RoadMaster transmissions offers the basic upgrades at a budget friendly price! Each unit receives a brand new OEM valve body which is modified to increase line pressure, improving clutch holding power. The factory plastic transmission pan is upgraded with a more rigid deep sump pan with increased capacity to increase the life of your transmission fluid. The torque converter is a weak point on 10R80 transmissions so each converter is fully remanufactured to restore original performance.

- Increase in line pressure.
- Deep sump aluminum oil pan.
- Modified new OEM valve body.
- Stock clutch counts.
- ProForce remanufactured torque converter.

ROADMASTER
TRANSMISSION

1064614SS
1064612SS
1064624SS
1064622SS



GM VENOM CP3 CONVERSION KIT

2011-2016 2500/3500 DURAMAX 6.6L

The BD Diesel LML Duramax CP3 Conversion kit allows owners to backdate their injection pump from the unreliable CP4 to the proven CP3 pump! Available as a component install kit without a cp3, or as a complete kit with a CP3 that does not require tuning on stock engines for operation!

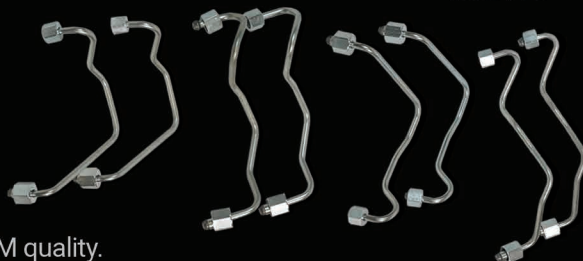
- Replaces CP4 injection pump with reliable.
- CP3 pump.
- Uses LMM Duramax Style CP3 pump.
- No tuning required.
- EPA compliant.
- No core charge.

PREVENT CATASTROPHIC FAILURE & THOUSANDS IN DAMAGE.



LML FUEL LINES SET

2011-2016 DURAMAX 6.6L



- OEM quality.
- Corrosion resistant.
- Exact fit (no adjustment needed by end user).
- Preformed to the correct factory specifications.

INJECTOR CONNECTOR W/PIGTAIL

CHEVY/GM DURAMAX L5P 2017-2022



- 8-inch length.
- Includes two heat shrink butt connectors.
- Easy to install.
- Exact fit.

GM STEERING UPGRADE KIT

2001-2003 & 2005-2007 1500HD/ 2001-2010 2500HD/3500HD

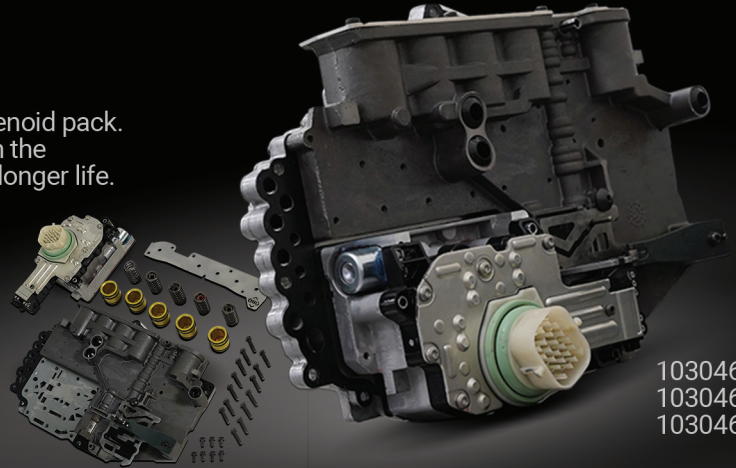
- Forged I-Beam Centerlink 30% stronger than OEM for less deflection.
- Forged Centerlink retains factory geometry for accurate steering.
- Tie rods 1.5x larger than OEM.
- Larger Greaseable Ball Joints for long service life.
- Sway bar end links 1-inch longer than factory to accommodate leveling kits.
- Durable polyurethane sway bar end link bushings shaped for articulation and durability.
- 1-inch longer Sway bar end links prevent damage to Tie Rod Seals/Boots.
- Greaseable pitman arm and idler arm.
- Compatible with OEM components.



68RFE VALVE BODY

2011-2018 CUMMINS 6.7L

- Available with or without new OEM Chrysler solenoid pack.
- BD proprietary hardened steel sleeve installed in the solenoid switch valve (SSV) bore for drastically longer life.
- Upgraded larger SSV plugs with axial support feature to reduce wear.
- New billet BD accumulator pistons with extra sealing surface and improved wear characteristics.
- Custom BD bonded separator plate to eliminate cross leaks and improve line pressure.
- Heavy-duty accumulator plate to prevent accumulator blowout.
- Includes pan gasket for installation.



1030465
1030467
1030468

BUILD-IT TOWMASTER REBUILD KIT

68RFE 2019+

- Custom bonded gasket valve body separator plate increases line pressure while stopping internal cross leaks.
- Heavy duty accumulator plate to prevent accumulator blowout.
- BD durable QT100 pressure plates allow for increased clutch counts and reduce deflection and distortion within the clutch drum.
- Upgraded One Way Clutch/Sprag.
- Over Drive clutches 17% increase and Under Drive clutches 20% increase.



1062027

BUILD-IT
TOWMASTER
REBUILD KIT

BUILD-IT KIT TRANSMISSION & CONVERTER PACKAGES

BD's rebuild parts kits featuring the same parts we use in our own performance transmissions now available packaged with BD ProForce Single Disc and ProForce3D Multi-Disc Torque Converters.

68RFE ROADMASTER 6.7L
CUMMINS 2007.5-2018



1063022

BUILD-IT
ROADMASTER

47RE TORQUEMASTER 5.9L
CUMMINS 1994-2002



1063004

BUILD-IT
TORQUEMASTER

48RE TORQUEMASTER 5.9L
CUMMINS 2003-2007



1063014

BUILD-IT
TORQUEMASTER

68RFE TORQUEMASTER 6.7L
CUMMINS 2007.5-2018



1063025

BUILD-IT
TORQUEMASTER

INJECTORS & INSTALL KITS

CUMMINS / DURAMAX

- Manufactured by Bosch trained technicians.
- Every injector receives a new Bosch nozzle and control valve.
- All injectors tested and validated on a Bosch 815 test bench.
- Over 8 operating conditions tested.
- Includes BD's OEM fit fuel lines.
- High quality gaskets.

SAVE TIME, MONEY & HEADACHES.



2001-2004 GMC 6.6L LB7
1050180



2003-2005 CUMMINS 5.9L
1050181
1050182



2006-2007 CUMMINS 5.9L
1050183



2007-2018 CUMMINS 6.7L
1050184 1050187
1050185 1050188
1050186



INJECTOR LINE SETS

Fuel injector feed lines corrode and require replacement. OEM fuel injector feed lines are costly, and may not be available or have long lead times. BD's NEW stock replacement fuel lines fit perfectly out of the box with OEM finish, and corrosion resistance. Why compromise? With BD's Injector Line Set you get OEM quality at an aftermarket price.

- Precision OEM fit.
- Zinc plated for corrosion resistance.
- 2 year Warranty.

CUMMINS 6.7L
1050151



DURAMAX LB7
1050140



CUMMINS 5.9L
1050150



POWER STROKE 6.7L
1050165



**OEM QUALITY.
AFTERMARKET
PRICE.**

FORD TRACK BAR KIT

F-250/F-350 4WD 2005-2016 & F-450/F-550 2WD/4WD 2005-2022

- Long lasting, easily serviceable polyurethane bushing
- Fully Adjustable without removal from truck.
- Allow for correct axle alignment on lifted trucks up to 6-inches on Ford.
- High strength, heat treated forged components.
- High quality black Cerakote finish.
- Drive straighter with less wander and more positive steering feel.
- Replacement Poly bushing set available p/n 1303104.



FORD TRACK BAR BRACKET

FORD F250/F350 4WD 2008-2021

- Lowers track bar mounting point by 2".
- Corrects suspension geometry on lifted vehicles.
- High strength cast iron with ADI heat treat process for maximum strength.
- Can be combined with BD 1032110 for adjustability or larger lift height.
- Made in Canada.



RAM ELECTRONIC EXHAUST BRAKE

RAM 2500/3500 6.7L 2007.5-2017

- Inline installation allows for quick and universal placement of brake.
- Cast iron construction withstands heat cycle and is robust for long life.
- No air compressor reduces system maintenance, and point of failure.
- BD 'Variable Orifice Technology' helps regulate back pressure through RPM range.
- 150 retarding hp available to slow vehicle on steep descents.
- Use of OEM dash button creates a clean, less intrusive install.

1027346 (4")
1027347 (5")



Contact your BD Diesel Sales Representative to learn more.

1-800-887-5030

sales@bddiesel.com
bddiesel.com

WE'RE ON YOUR FAVORITE SOCIAL MEDIA PLATFORM



FIND YOUR LOCAL OUTLET: DEALERS.BDDIESEL.COM