



Volkswagen Touran
Standard Safety Equipment

2022



Adult Occupant



77%

Child Occupant



81%

Vulnerable Road Users



62%

Safety Assist



66%

SPECIFICATION

Tested Model	VW Touran 1.5 TSI 'Comfortline', LHD
Body Type	- 5 door MPV
Year Of Publication	2022
Kerb Weight	1520kg
VIN From Which Rating Applies	- #####PW000103
Class	Small MPV

SAFETY EQUIPMENT

	Driver	Passenger	Rear
FRONTAL CRASH PROTECTION			
Frontal airbag	●	●	—
Belt pretensioner	●	●	●
Belt loadlimiter	●	●	●
Knee airbag	●	—	—
LATERAL CRASH PROTECTION			
Side head airbag	●	●	●
Side chest airbag	●	●	○
Side pelvis airbag	✘	✘	✘
Centre Airbag	✘	✘	—

SAFETY EQUIPMENT (NEXT)

	Driver	Passenger	Rear
CHILD PROTECTION			
Isifix/i-Size	—	✘	●
Integrated CRS	—	✘	○
Airbag cut-off switch	—	●	—
SAFETY ASSIST			
Seat Belt Reminder	●	●	●

OTHER SYSTEMS	
Active Bonnet	●
AEB Vulnerable Road Users	●
AEB Pedestrian - Reverse	✘
AEB Car-to-Car	●
Speed Assistance	●
Lane Assist System	●

Note: Other equipment may be available on the vehicle but was not considered in the test year.

- Fitted to the vehicle as standard
 ○ Fitted to the vehicle as part of the safety pack
○ Not fitted to the test vehicle but available as option or as part of the safety pack
 ✘ Not available
 — Not applicable

ADULT OCCUPANT

Total 29.4 Pts / 77%

■ GOOD
 ■ ADEQUATE
 ■ MARGINAL
 ■ WEAK
 ■ POOR

Frontal Impact 12.0 / 16 Pts

Mobile Progressive Deformable Barrier Full Width Rigid Barrier

Lateral Impact 12.7 / 16 Pts

Side Mobile Barrier Side Pole Far-Side Excursion Occupant Interaction

Rear Impact 3.7 / 4 Pts

Rear Seat Front Seat

ADULT OCCUPANT

Total 29.4 Pts / 77%

■ GOOD
 ■ ADEQUATE
 ■ MARGINAL
 ■ WEAK
 ■ POOR

Rescue and Extrication		1.0 / 2 Pts
Rescue Sheet	Available, ISO compliant	
Advanced eCall	Available	
Multi Collision Brake	Available	

Comments

The passenger compartment of the VW Touran remained stable in the frontal offset test. Dummy readings indicated a possibility of injury to the driver's femur and protection of this body area was rated as marginal. Dummy readings of compression also indicated marginal protection of the chest of the driver. Analysis of the deceleration of the impact trolley during the test, and analysis of the deformable barrier after the test, revealed that the car would be an aggressive impact partner in a frontal collision. In the full-width rigid barrier test, protection of all critical body regions was good or adequate for both the driver and rear passenger. In both the side barrier impact and the more severe side pole test, protection of all critical body areas was good and the Touran scored maximum points in this part of the assessment. Control of excursion (the extent to which a body is thrown to the other side of the vehicle when it is hit from the far side) was found to be poor. The Touran does not have a counter-measure to mitigate against occupant to occupant injuries in such impacts. Tests on the front seats and head restraints demonstrated good protection against whiplash injuries in the event of a rear-end collision. A geometric analysis of the rear seats also indicated good whiplash protection. The Touran has an advanced eCall system which alerts the emergency services in the event of a crash. The car's 'Multi Collision Braking' system automatically applies the brakes to prevent secondary collisions but did not bring the car to a halt and was not rewarded.

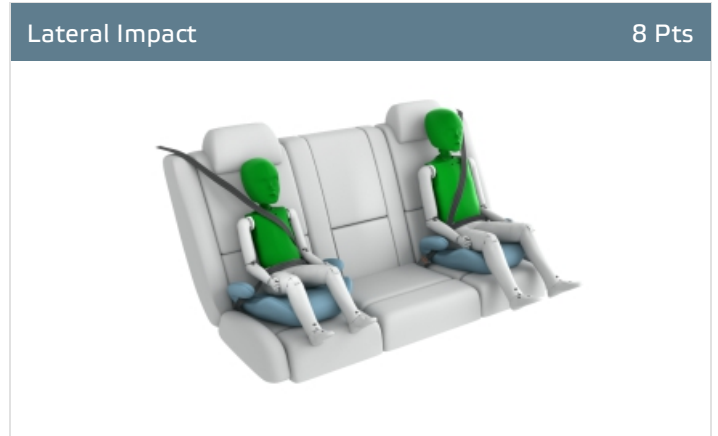
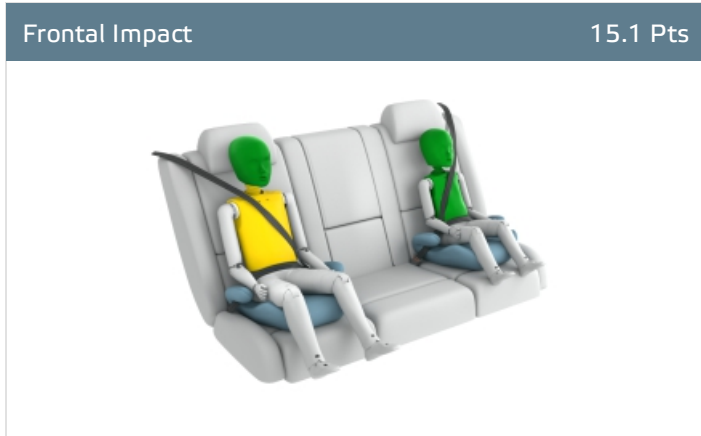
CHILD OCCUPANT

Total 40.0 Pts / 81%

■ GOOD
 ■ ADEQUATE
 ■ MARGINAL
 ■ WEAK
 ■ POOR

Crash Test Performance based on 6 & 10 year old children

23.1 / 24 Pts



Restraint for 6 year old child: *Fully integrated CRS*
 Restraint for 10 year old child: *Fully integrated CRS*

Safety Features

7.0 / 13 Pts

	Front Passenger	2nd row outboard	2nd row center	3rd row outboard *
Isofix	✘	●	●	●
i-Size	✘	●	●	●
Integrated CRS	✘	○	✘	✘

* Third row seats available as option

● Fitted to test car as standard
 ○ Not on test car but available as option
 ✘ Not available

CRS Installation Check

9.9 / 12 Pts

- Install without problem
- Install with care
- Safety critical problem
- ✗ Installation not allowed

■ i-Size CRS

Maxi Cosi 2way Pearl & 2wayFix (i-Size)



Maxi Cosi 2way Pearl & 2wayFix (i-Size)



BeSafe iZi Kid X2 i-Size (i-Size)



Britax Römer TriFix2 i-Size (i-Size)



BeSafe iZi Flex FIX i-Size (i-Size)




■ ISOFIX CRS

BeSafe iZi Combi X4 ISOfix (ISOFIX)



Cybex Solution Z i-Fix (ISOFIX)



 CHILD OCCUPANT

Total 40.0 Pts / 81%

■ Universal Belted CRS

Maxi Cosi Cabriofix (Belt)



Maxi Cosi Cabriofix & EasyFix (Belt)



Britax Römer King II LS (Belt)



Cybox Solution Z i-Fix (Belt)



CHILD OCCUPANT

Total 40.0 Pts / 81%

	Seat Position					
	Front	2nd row			3rd row	
	PASSENGER	LEFT	CENTER	RIGHT	LEFT	RIGHT
Maxi Cosi 2way Pearl & 2wayFix (i-Size)	—	●	●	●	●	●
Maxi Cosi 2way Pearl & 2wayFix (i-Size)	—	●	●	●	●	●
BeSafe iZi Kid X2 i-Size (i-Size)	—	●	●	●	●	●
Britax Römer TriFix2 i-Size (i-Size)	—	●	●	●	●	●
BeSafe iZi Flex FIX i-Size (i-Size)	—	●	●	●	●	●
BeSafe iZi Combi X4 ISOfix (ISOFIX)	—	●	●	●	✘	✘
Cybex Solution Z i-Fix (ISOFIX)	—	●	●	●	●	●
Maxi Cosi Cabriofix (Belt)	●	●	●	●	●	●
Maxi Cosi Cabriofix & EasyFix (Belt)	●	●	●	●	✘	✘
Britax Römer King II LS (Belt)	●	●	●	●	●	●
Cybex Solution Z i-Fix (Belt)	●	●	●	●	●	●

- Install without problem
- Install with care
- Safety critical problem
- ✘ Installation not allowed
- Not available

Comments

Integrated child restraints are an option for the second-row outboard seats and were used for the dynamic tests. Apart from the head and neck of the 10 year dummy in the frontal offset test, protection of which was adequate, the car provided good protection of all critical body regions of both dummies in dynamic crash tests. The front passenger airbag can be disabled to allow a rearward-facing child restraint to be used in that seating position. Universal belted restraints failed the installation check in the rear centre and optional third row seats. A choice of appropriate universal belted child restraint systems is presented in the Touran's vehicle handbook. All child restraint types could be properly installed and accommodated in the other seating positions.

 **VULNERABLE ROAD USERS**

Total 34.0 Pts / 62%

GOOD
 ADEQUATE
 MARGINAL
 WEAK
 POOR

Pedestrian

25.7 / 36 Pts



Head Impact	18.7 Pts
Pelvis Impact	1.0 Pts
Leg Impact	6.0 Pts

Vulnerable Road Users


8.3 / 18 Pts

System Name	Front Assist
Type	Auto-Brake with Forward Collision Warning
Operational From	6 km/h

 VULNERABLE ROAD USERS

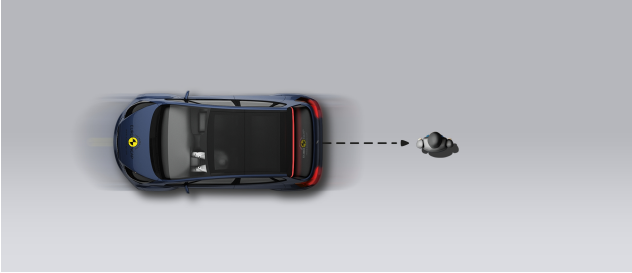
Total 34.0 Pts / 62%

AEB Pedestrian

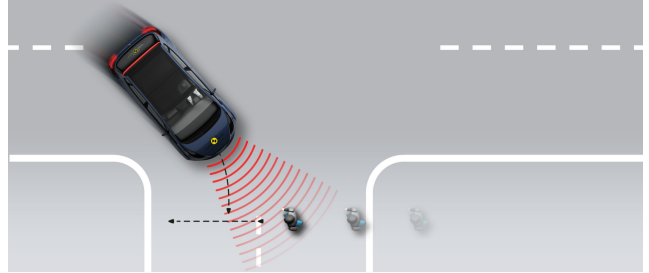
 4.4 / 9 Pts

■ Day time

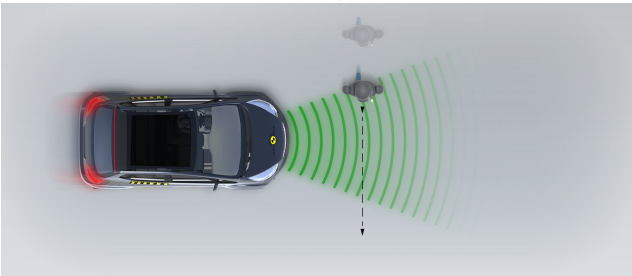
Vehicle reversing into standing pedestrian



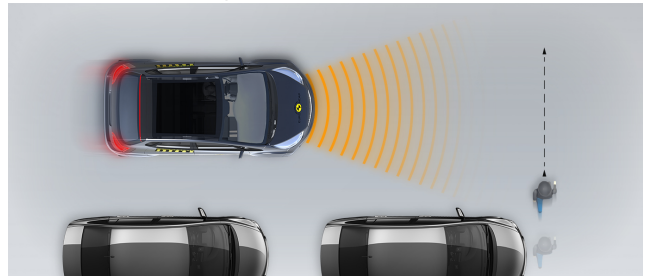
Pedestrian crossing a road into which a car is turning



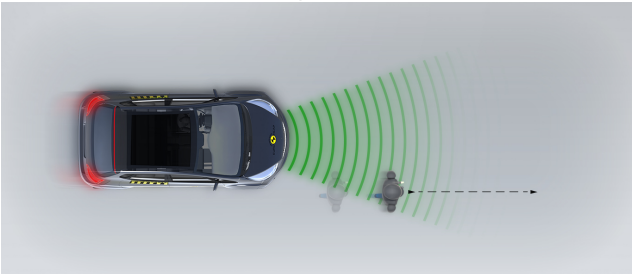
Adult crossing the road



Child running from behind parked vehicles



Adult along the roadside

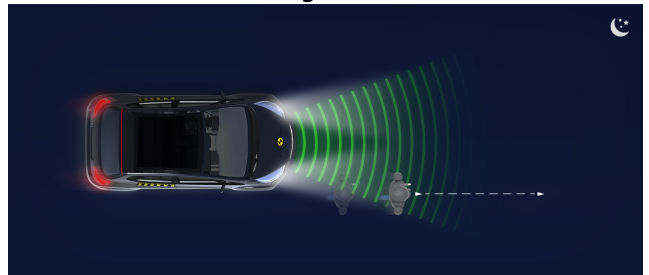


■ Night time

Adult crossing the road



Adult along the roadside





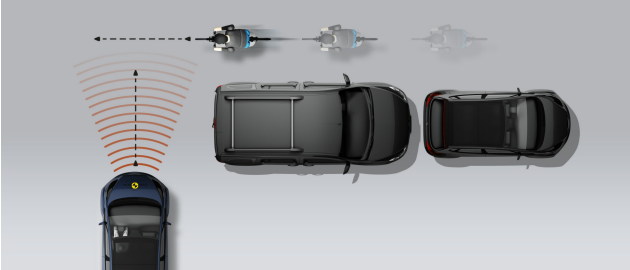
VULNERABLE ROAD USERS

Total 34.0 Pts / 62%

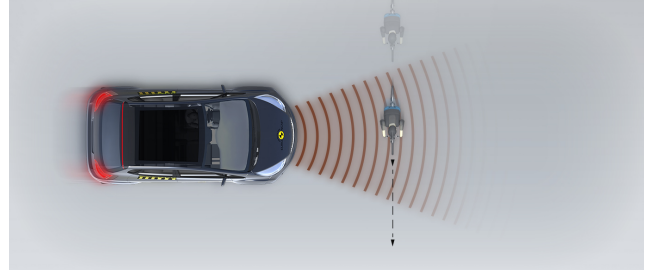
AEB Cyclist

3.9 / 9 Pts

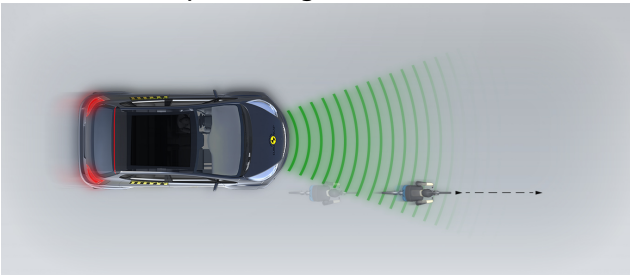
Cyclist from nearside, obstructed view



Approaching a crossing cyclist



Cyclist along the roadside



Comments

Protection of the head of a struck pedestrian was predominantly good or adequate. The bumper offered good protection to pedestrians' legs at all test locations but protection of the pelvis was almost completely poor. The autonomous emergency braking (AEB) system of the VW can respond to vulnerable road users as well as to other vehicles. The system performed only marginally in tests of its response to pedestrians and cyclists, with collisions avoided in most test scenarios.

SAFETY ASSIST

Total 10.7 Pts / 66%

■ GOOD
 ■ ADEQUATE
 ■ MARGINAL
 ■ WEAK
 ■ POOR

Speed Assistance ■ 1.3 / 3 Pts

System Name	Speed Limiter
Speed Limitation Function	Manually set (accurate to 5km/h)

Occupant Status Monitoring ■ 2.0 / 3 Pts

> Seatbelt Reminder ■ 1.0 / 2 Pts

Applies To	Front and rear seats		
	Driver Seat	Front Passenger(s)	Rear Passenger(s)
Warning			
Visual	●	●	●
Audible	●	●	●
Occupant Detection	—	●	—

● Pass
 ● Fail
 — Not available

> Driver Monitoring ■ 1.0 / 1 Pts

System Name	Driver Alert System
Type	Steering input
Operational From	60 km/h

SAFETY ASSIST

Total 10.7 Pts / 66%

Lane Support

4.0 / 4 Pts

System Name	Lane Assist	
Type	LKA and ELK	
Operational From	60 km/h	
PERFORMANCE		
Emergency Lane Keeping		GOOD
Lane Keep Assist		GOOD
Human Machine Interface		GOOD

AEB Car-to-Car

3.4 / 6 Pts

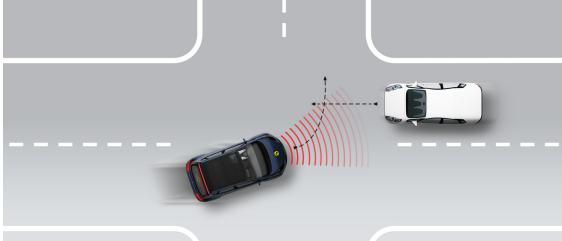
System Name	Front assist	
Type	Autonomous emergency braking and forward collision warning	
Operational From	6 km/h	
Sensor Used	camera and radar	

 SAFETY ASSIST

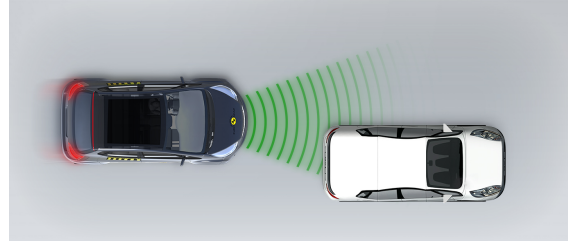
Total 10.7 Pts / 66%

■ Autobrake function only

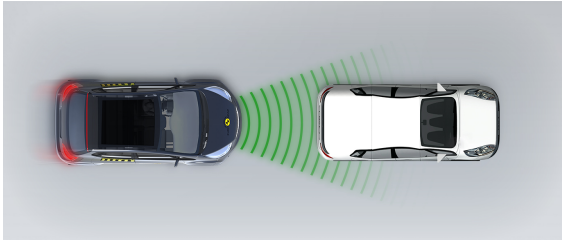
Car turning across the path of an oncoming car



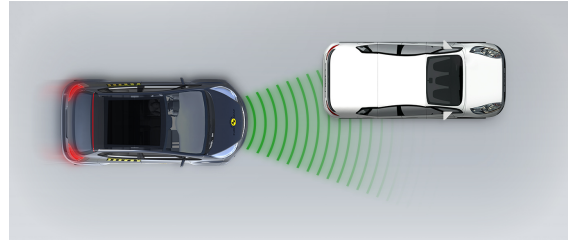
Approaching a stationary car



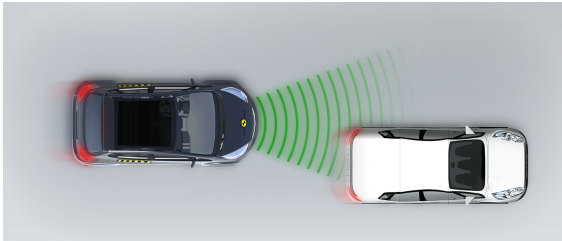
Approaching a stationary car



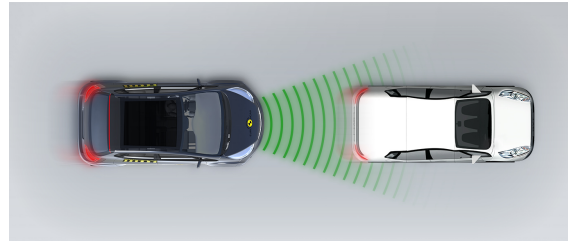
Approaching a stationary car



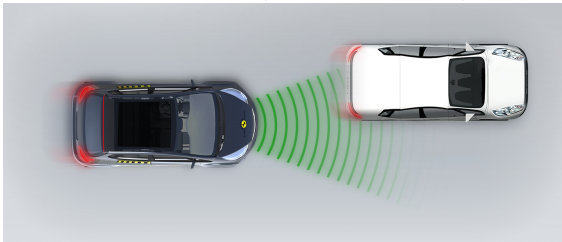
Approaching a slower moving car



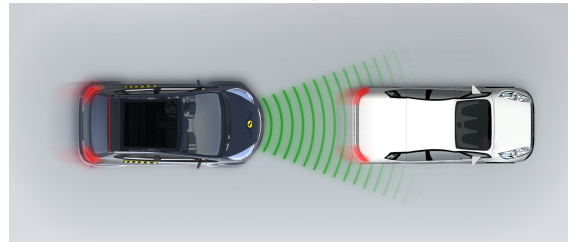
Approaching a slower moving car



Approaching a slower moving car



Approaching a braking car

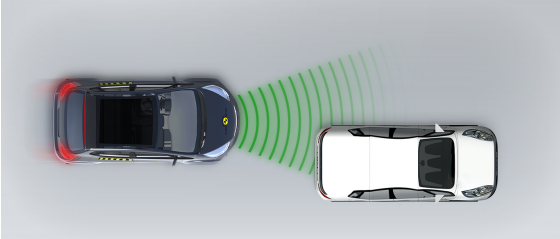


 SAFETY ASSIST

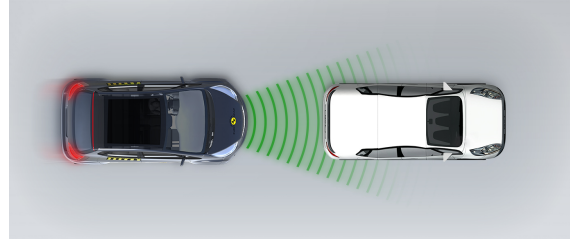
Total 10.7 Pts / 66%

■ Driver reacts to warning

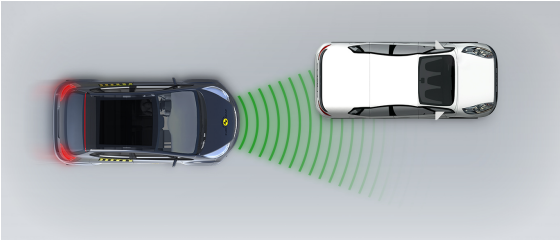
Approaching a stationary car



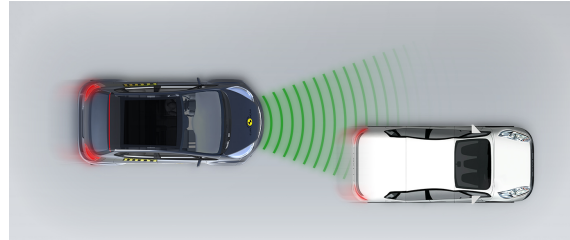
Approaching a stationary car



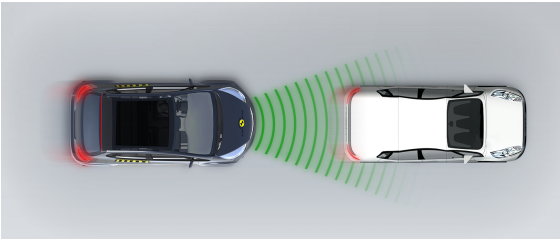
Approaching a stationary car



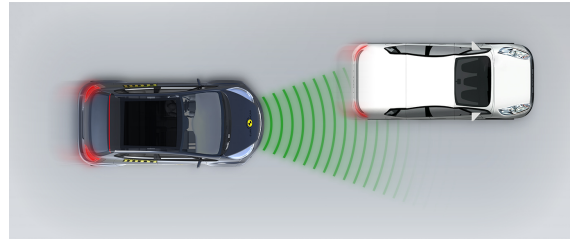
Approaching a slower moving car



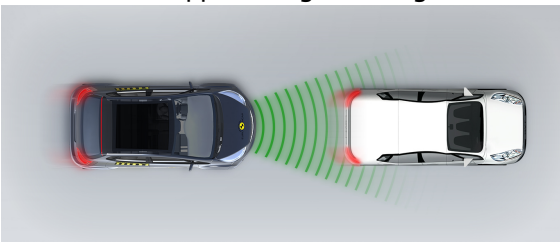
Approaching a slower moving car



Approaching a slower moving car



Approaching a braking car





SAFETY ASSIST

Total 10.7 Pts / 66%

Comments

The autonomous emergency braking (AEB) system of the Touran performed adequately in tests of its reaction to other vehicles. A seatbelt reminder system is fitted as standard to the front and rear seats and the car is equipped with a system to detect driver fatigue. The lane support system gently corrects the vehicle's path if it is drifting out of lane, and also intervenes in some more critical situations. A driver-set speed limiter is standard equipment.

RATING VALIDITY

Variants of Model Range

Body Type	Engine	Drivetrain	Rating Applies	
			LHD	RHD
5 door MPV	1.5l 110 KW TSI MQ *	4 X 2	✓	✓
5 door MPV	1.5l 110 KW TSI DQ	4 X 2	✓	✓
5 door MPV	2.0l 90 KW TDI MQ	4 X 2	✓	✓
5 door MPV	2.0l 110 KW TDI DQ	4 X 2	✓	✓

*Tested variant

Annual Reviews and Facelifts

Date	Event	Outcome
November 2022	Rating Published	2022 ★★☆☆☆ ✓