

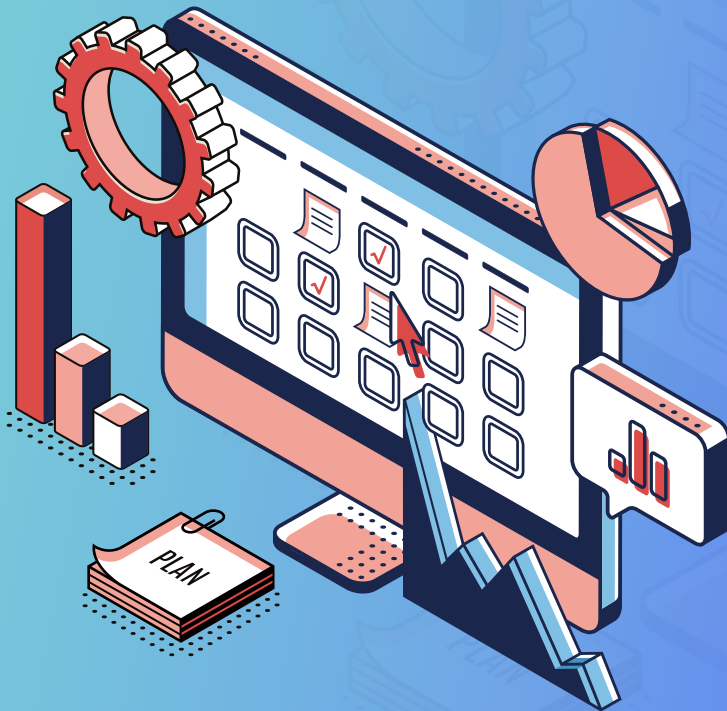


Curricula
For Corporate Learning

MaivenPoint

Corporate Learning & Development Platform

Modern & Hybrid-ready Corporate L&D Platform





Immersive Learning for Improved Employee Engagement

Employees are guided through pre-session preparation, session participation, and post-class task tracking. Our handy Teams chatbot, Delphi, responds to common employees' questions about the course or lessons, anytime, anywhere.



Learning Management at Scale, from Anywhere

Easily build and publish courses and lessons. Multiple learning objects that cover reference materials, quiz, file submission, and more. Deliver lessons to ten or thousands of employees. Scale your L&D programs globally while remaining locally relevant.



Reduce IT Overheads of Online Employee Learning

Unified learning technology, build on the Microsoft Cloud, reduces IT overhead. Automatically create courses and training topics on Microsoft's Teams framework. Easily share messages, post notifications, and join online classes all within a familiar experience.

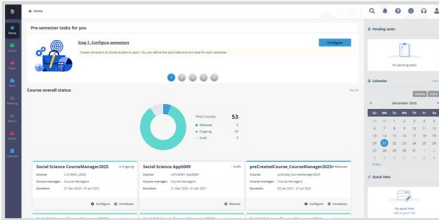
A Future-Proof Learning Management System



Today's working professionals are expecting personalised and accessible learning on-the-go. To keep up with the transition into hybrid organisations, it is imperative your organization remains ahead of the curve. MaivenPoint understands and curates a smart-corporate digital learning experience for the modern employee in a hybrid work environment. Curricula is a future-proof solution that evolves with the latest, collaborative technologies. Leverage Microsoft Teams accessibility & usability to deliver a seamless and satisfying online learning journey for your organization.

MaivenPoint Curricula for Corporate Learning

Customise Your Courses or Subscribe to Ready Content:



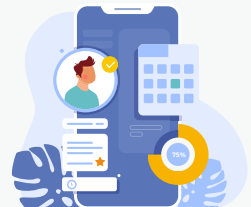
- ✓ Blended learning, where employees self-enroll, and undertake a self-picked range of courses straight from Teams meetings.
- ✓ Live trainings, workshops or recorded content - ideal for soft skills training or topical sharing across the organization.
- ✓ Organizations that prefer to subscribe to ready course content can enjoy instant access to a full range of Go1 corporate courses within Curricula.
- ✓ Stack, learn and earn course credentials directly from your own corporate learning platform.

An Intuitive LMS Tailored for Your Employees:

- ✓ **Learning assistant Delphi.** Automatically post notification in Teams channel before sessions start, and answer common learner questions about courses, lessons, and tasks.
- ✓ **Centralized dashboard.** Quickly view future, in-progress, and completed courses, all alongside associated tasks, with clearly visible due-dates.
- ✓ **Skills & Competency-based Learning.** Unlock workforce potential through upskilling with skills-mapped job roles.
- ✓ **Cover all bases.** Access and read all reference materials before class starts, take notes during the session, and submit learning tasks within Curricula.

Easy Navigation for Trainers & Administrators:

- ✓ **Mark attendance.** Automatically track employees's attendance for each session.
- ✓ **Timeline arrangement.** Modify the open or close time of quiz or other learning objects to fit into your schedule.
- ✓ **Access details.** View and check all the lessons or courses, then release the personalised learning paths to employee groups.
- ✓ **File sharing.** Staff work-bin provides a secure zone only for trainers to share and prepare teaching materials.



Trusted by Chief People Officers and L&D Managers

- ✓ **Integration with Microsoft Teams.** Course, class, and lessons will be automatically created in Microsoft Teams to facilitate collaborative learning & communication among trainers and employees.
- ✓ **Full-featured course management.** Manage enrollment, learning paths, your knowledge repository, tasks, marking and track completion.
- ✓ **Learning objects.** Define specific learning objects required for each course including a sequence of learning tasks under a pre-set time duration.
- ✓ **Question & quiz bank.** Create quiz with multiple types of questions to measure and evaluate the learning outcomes of your employees.
- ✓ **Dynamic synchronization of training with employee movement.** Instantly allocate key trainings to employee groups where they can learn at their own pace. Dynamically manage employees' course access according to real-time staff movement.

Enhanced Productivity for HR & IT Administrators:

- ✓ **Build on Microsoft Cloud.** Leverage Microsoft collaboration technology to drive easy and consistent user adoption and seamless learning experience.
- ✓ **Cloud technology.** Simplified system maintenance creates a common process for setting up, managing and provisioning of in-policy services for end-users (SaaS).
- ✓ **Reports provide deep insights.** Deliver actionable data analysis and trend reports for employee wellness and training to leadership development.
- ✓ **Account security.** Assign users in your tenant to different roles with escalated level of permissions.
- ✓ **Employee onboarding by cohorts.** Onboarding programs can be created regionally with a mix of offline and online modes, and instantly provisioned for cohorts of employees according to their onboarding periods.

Globally Consistent, Locally Relevant

- ✓ Our SaaS solutions are built to scale, and built to last. Curricula enables organisations to consistently scale L&D programs globally, with the ability to customise content regionally to ensure local relevance. We take care of the tech, so you can focus on employee learning, training and adoption.
- ✓ E.g. Manager trainings in each region can adopt the same lesson content, while the trainer, learners, teaching time and format can be tailored locally.



@MaivenPoint

P: + 65 6692 9028 | E: sales@maivenpoint.com | www.MaivenPoint.com

Copyright 2023 © MaivenPoint Pte. Ltd.

