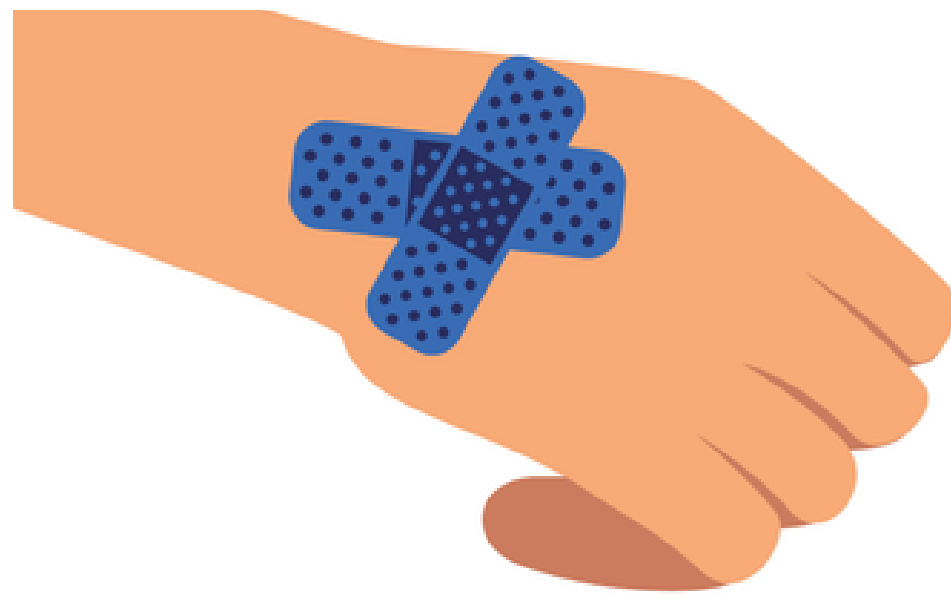


PERSONAL HABITS AND SICKNESS POLICY

Cover all
wounds with
plaster AND
a glove



Eating, drinking,
smoking, and chewing
gum or tobacco is not
allowed in food prep
areas or stewarding
area

Do not work with these symptoms:

- Vomiting
- Diarrhoea
- Jaundice
- Sore throat with a fever
- Severe skin condition

