

parallel

The Power of Partnerships

Case Study: Parallel Learning and Canton Union School District #66



parallellearning.com



@joinparallel



Introduction

parallel

Background on Parallel Learning



Parallel works hand-in-hand with K-12 schools and districts to elevate clinical outcomes for students by providing special education support supercharged by technology that improves access, equity, quality, and efficiency of services.

Comprehensive psychoeducational assessments



Specialized instruction



Executive function coaching



Behavioral & mental health counseling



Speech-language pathology



Parallel provides a comprehensive range of virtual special education services, including assessments, speech-language pathology, behavioral mental health counseling, executive function coaching, and specialized instruction, through a vast network of best-in-class providers using our FERPA compliant platform.

Parallel's Mission

Parallel's mission is to build a strong foundation for schools to enable different learners and thinkers to thrive, and our goal is to ensure that every student receives the support they need to succeed academically, socially, and emotionally.



Background on Canton Union School District #66

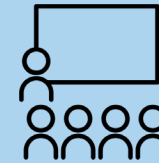


Canton Union School District #66 is a **PK-12 public school district** located in Canton, Illinois, United States.

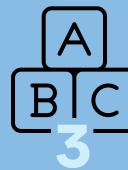
Canton by the numbers



2,200
students served
in grades PK-12



13 : 1
students to
teacher ratio



3
elementary
schools



1
middle
school



1
high
school

Canton's Mission

"Every Canton student embraces individuality and is prepared, respectful, driven and empowered to pursue their future."
Collaboration | Problem Solving | Creative Thinking | Innovation

Context

Committed to the success of their students and driven by their educational mission, Canton Union School District embraces the unique challenges involved in managing special education programs. This includes aspects like budgeting, staffing, and program development. In a strategic partnership with Parallel Learning, an innovative provider of specialized virtual services for special education, the district exemplifies the importance of seamless collaboration between internal teams, external partners, and Canton Union School District's vision for achieving exceptional outcomes in special education.



Challenges Prior to Partnership

Initial skepticism among school personnel regarding the effectiveness and reliability of tele-service providers.

Difficulty in finding qualified, in person Speech-Language Pathologists (SLPs)

Challenge in finding qualified, in person School Psychologists to administer psychoeducational evaluations



Parallel's Solutions

By consistently delivering professional, reliable, and high-quality services over time, Parallel gradually earned the trust of school personnel, demonstrating the effectiveness and benefits of their tele-service offerings.

The Parallel team also provided coaching and support to the district leader to help with implementation.

Parallel provided 3 Speech-Language Pathologists, providing services to 177 students.

Parallel provided 1 School Psychologist to provide 55 psychoeducational evaluations for Canton students.



Every child deserves a champion—an adult who will never give up on them, who understands the power of connection, and insists that they become the best that they can possibly be.

— Rita Pierson
Educator



Results

October 2022 — present



177 students served by
Speech Language Pathologist



55 psychoeducational
evaluations conducted



980 total service hours provided

Future Plans

Following the remarkable success observed during the initial contract term, CUSD made the decision to renew its contract for the upcoming school year (2023-2024) with an even more comprehensive scope:



Additional psychoeducational assessments

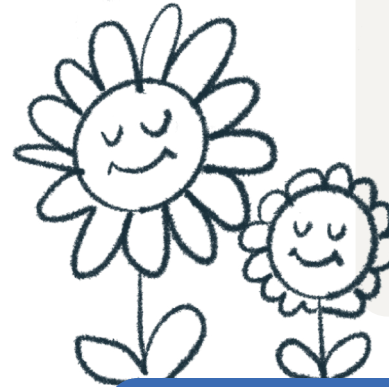


800 additional hours of SLP services

Five words to describe
Parallel's services:

Efficient
Professional
Responsible
Dependable
Responsive

— Missy Ryba
Director of Student Services



Conclusion

Parallel Learning's collaboration with Canton Union School District (CUSD) has produced outstanding outcomes and garnered high satisfaction levels, through a knowledgeable team, effective communication and support, and a dedicated group of providers who prioritize students' well-being.

The results are a testament to this successful partnership, evident in a future increase in the delivery of services, providers' achievements, and the number of students benefiting from these services.

In summary, Parallel Learning's achievements with Canton Union School District highlight their capacity to expand special education services and effectively address the diverse needs of students, ultimately contributing to improved educational experiences and outcomes.

Contact Parallel



Noah Lewis
noah.lewis@parallelearning.com

parallelearning.com