

CONCRETE COMPASS

Welcome to the latest news from the World of Concrete



IN THIS ISSUE

Navigating through high seas

Rombus

Canform®

Converge is here

3D Toilet pods

Concreters & ContractorsHub'

School Of Concrete

NAVIGATING THROUGH HIGH SEAS WITH ALL HANDS ON DECK

For years, we've all been dedicated to building business, focusing on nurturing key relationships with people, partners, customers, and service providers. Our responsibility has always been to drive innovation with new product development, not just for our own benefit but by involving builders, engineers, architects, developers, and the entire concrete industry and community. Collaboration is at the heart of what we do. Constantly improving internal processes and investing in our people, building skills and sharing knowledge internally and externally, ensuring that the very best advice behind our products and systems for their intended applications is provided. The goal has always been to make the process easier and deliver a better outcome for everyone involved.

However, it's often a challenging journey. Anticipating, navigating and delivery, requiring relentless efforts to ensure that processes and regulations are upheld. We are incredibly proud of the capabilities that have been developed. The standards set and maintained but also acknowledge the seas of the voyage are not always smooth sailing. There are successes and setbacks like a constant battle. Also acknowledge that the intended

course plotted isn't always calm. Like a ship's journey, challenges are faced, the environmental forecast changes and so does the structure. Markets fluctuate and so do the tides. Having to change tack or adjust ropes to improve positioning and refocus.



Admit the changes of unfavourable winds faced at times, optimism is a powerful tool. It builds confidence and opportunity for sustained growth and can assist in adapting more effectively. Tough decisions need to be made. It does get harder sometimes, "harder than concrete." and we understand why. Don't give up. Have the courage to keep sailing. A new approach could have unexpected results. Work together, reassess your orientation skills and float new ideas, new strategies are then made with a clearer vision on how to get there. Help as you would together to improve the position in the market. Join with other businesses and the like

GOT ANY LIGHTBULB IDEAS FOR NEW INNOVATIVE PRODUCTS YOU WANT TO SEE CANZAC BRING TO THE MARKET?



LET US KNOW!

e: info@canzac.com

finding the right fit. Share the experience and knowledge and consider that the benefits are for all involved.

It's important to recognize the hard work happening behind the scenes. Some aspects of the industry are tough, and we understand the reasons behind it. Take a moment to acknowledge the complexities and the dedication it takes to keep moving forward.

Leaders who are prepared to stand up and address what they have experienced, learning new skills, investing a lot of time and interest into having a supporting crew, dealing with climatic technology is the making of a more efficient future.

Let's all work together better, this will go a long way. This will ignite new ideas on where business can lead to and have beneficial, sustainable results for everyone. Community development will improve potential and skill of the community to collectively make better choices. This will enhance good decision making about the use of resources, infrastructure, labour and knowledge. Be proud to keep concrete construction moving - sailing on. There is a wealth of experience to share around and working together on deck builds courage and confidence.

Be mindful, be loyal and respectful of the ocean - so to speak. "All above board", not out of your depth. Assist with improving partnerships between regulations, industry groups, community, business, and there is an opportunity to achieve better environmental economic objectives while giving certainty and confidence going forward.

-CC & LC



REDUCE YOUR CONCRETE COSTS AND SLASH YOUR CARBON FOOTPRINT

Looking to save money on your next concrete project and reduce your impact on the environment? Rombus offers a wide range of benefits over traditional concrete slabs and pavements.



NO FORMWORK | NO REINFORCING | NO SAWCUTTING

Ask for our carbon foot print calculators and cost comparisons [email: info@canzac.com](mailto:info@canzac.com)



CANFORM®

WANT A FORMWORK SYSTEM THAT WILL LAST FOR MANY YEARS WHILE SAVING YOU TIME & MONEY?

CANFORM® is the answer, It is the best choice for footpaths, driveways and all other straight and radius forming applications.

Our TUFF pins have heat hardened tips, they are extremely durable and last the distance making them a far better alternative to timber pegs. They have pre-drilled holes for nailing /screwing to wooden formwork and can also be used with our camlock system for CANFORM® plastic formwork.



FASTER | STRONGER | BETTER

CONVERGE IS HERE



CONCRETE MONITORING FOR EVERY JOB SITE

Get continuous, accurate and real-time strength and temperature data, ensuring you always have the most up-to-date information at your fingertips.

Use real-time monitoring and AI predictions on concrete strength and temperature to strike formwork up to 40% faster.

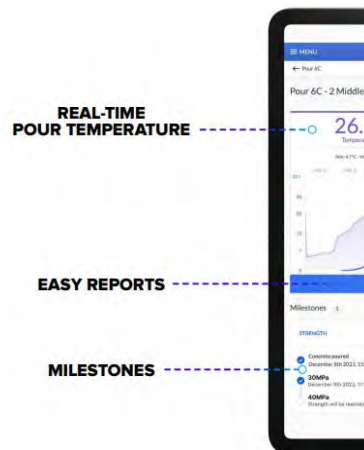
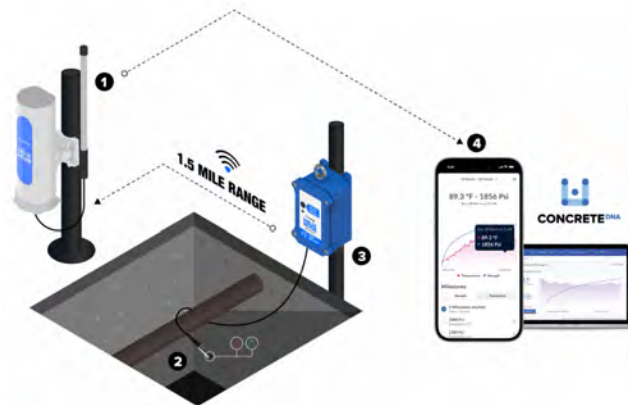
GO FULLY WIRELESS OR GO REUSABLE LONG RANGE

A fully wireless and embedded sensor that measures the internal temperature and strength of a concrete pour. No exposed wires, no hassle.

SOLUTIONS FOR EVERY JOBSITE

No two construction sites are the same, so your solutions shouldn't be a one-size-fits-all either. With the Signal & Helix systems you can choose a combination of solutions that fit your specific needs for functionality and budget. And the best part, they both work seamlessly on the ConcreteDNA® platform.

NEXT LEVEL CONCRETE INTELLIGENCE, DATA MANAGEMENT AND MIX SELECTION



KEY BENEFITS

- Make faster, safer decisions on post-tensioning, formwork removal, road openings, and more.
- Ensure project milestones are met by reducing wait times associated with traditional third-party lab testing.
- Monitor temperature differential limits to avoid cracking.
- Minimize safety risks associated with premature formwork removal or post-tensioning.
- Provide an audit trail for quality assurance and safeguard against potential disputes with irrefutable data on in-situ maturity testing.

CONVERGE SIGNAL®

Fully embedded & wireless

CONVERGE HELIX®

Reusable & long range

"With Converge Sensors we get real time data to our mobile phones giving us a realistic understanding on how the slab is behaving, allowing us to make programme gains, stripping our formwork as soon as possible saving huge amounts of time and money."



CONCRETE TOILET PODS - PRINTED IN 3D

The introduction of 3D-printed concrete toilet pods at railway stations in Wales is an innovative solution to the lack of facilities in some locations developed by ChangeMaker 3D in collaboration with CyBe and Bally Garner, these pods are designed to be both sustainable and efficient. The project gained recognition as a winning initiative in the Clean Futures Accelerator programme.



Inside the 3D printed toilet pod

The toilet pods are 2.4 meters high and consist of three separate walls that are 3D-printed and assembled on-site. The prototype, which took 4.5 hours to print at CyBe's facility in the Netherlands, demonstrates the efficiency of this technology. These pods are not just functional but also eco-friendly, using 60% less steel than traditional construction methods.

Currently, further development and testing are being conducted at BCIMO in the Midlands. ChangeMaker 3D CEO and co-founder, Natalie Wadley, explained that the testing includes evaluating the necessity of traditional damp-proofing methods for 3D-printed walls and examining how 3D printing interfaces with traditional construction materials and methods. This testing phase is crucial for determining the practicality and adaptability of 3D printing in real-world construction.

This project could potentially revolutionize how public facilities are constructed, particularly in locations where traditional construction may be challenging or inefficient.



Welcome to the most extensive range of concrete placing and finishing equipment on the market.

At CANZAC's Contractor & Concreters' Hub®, we provide a complete solution for concrete and general contractors. Our 'one stop' shop offers everything from Betonelli troweling machines and MASTERPAC compaction equipment to concrete saws, screeds, and finishing tools—covering all your needs from design to concrete placement and finishing. - You'll find it all here.

EVERYTHING YOU NEED TO GET THE JOB DONE



The School of Concrete, based at Canzac's Christchurch Head Office, is dedicated to preserving and passing on valuable industry knowledge accumulated over 38 years. It provides a combination of technical expertise and hands-on experience, offering training for a wide range of construction professionals

OUR PRIMARY PURPOSE

To provide a real-world centre of learning that teaches techniques using the latest technology to improve the skill level for all.

TESTIMONIAL

"The team at the School of Concrete had a thorough understanding and knowledge of all concrete related products on the market. They also understand the science behind the techniques and product but, importantly, were able to communicate clearly and impart this knowledge to us, in a very accessible way. We learnt about the latest products which have been developed and how these work for different applications. If you want to learn about concrete, this is the place to go."

- Specialist training programmes
- Demonstrations of key product lines for life-long expertise and support
- Space to showcase the latest innovations and technologies
- Onsite staff training - so we can walk the talk
- Purpose built facilities to host construction related events



0800 422 692
INFO@CANZAC.COM