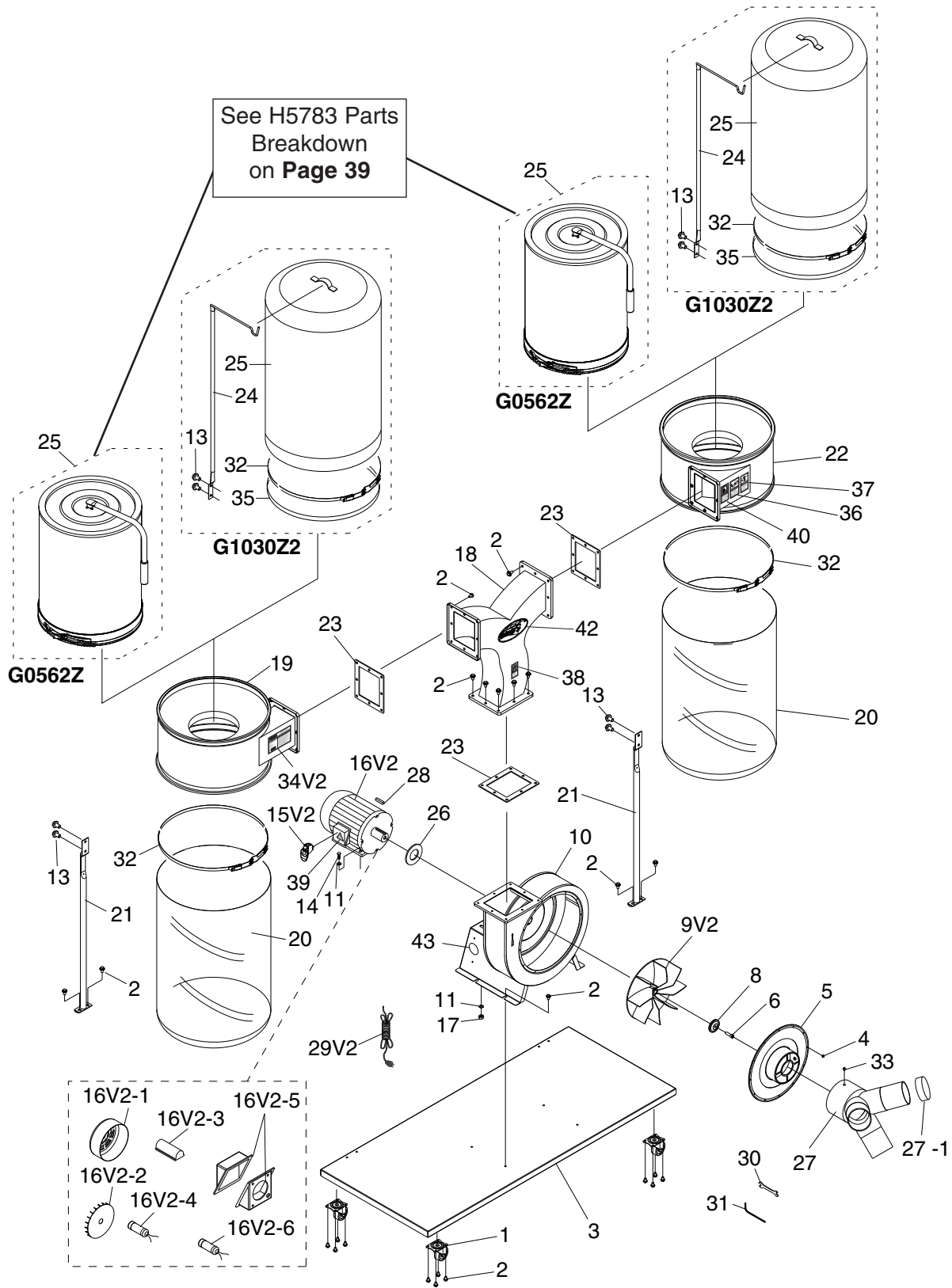


SECTION 10: PARTS

G0562Z/G1030Z2 Main Breakdown

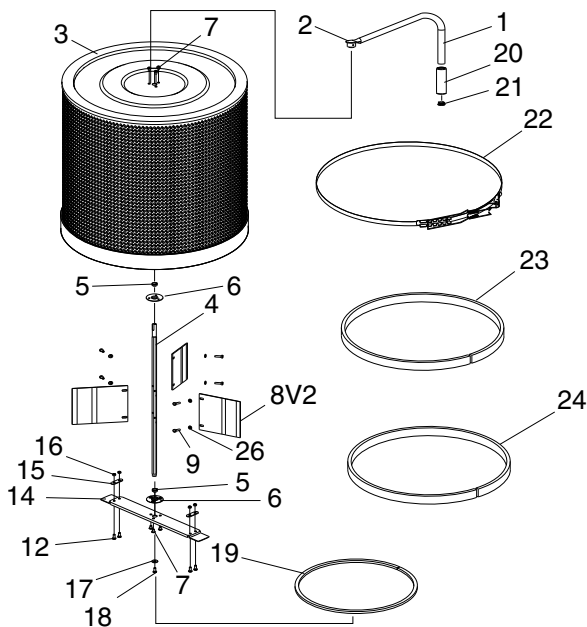


G0562Z/G1030Z2 Main Parts List

REF	PART #	DESCRIPTION
1	P1028Z2001	CASTER
2	PFB01	FLANGE BOLT 5/16-18 X 1/2
3	P1030Z2003	BASE PLATE
4	PS06	PHLP HD SCREW 10-24 X 3/8"
5	P1030Z2005	INLET COVER 7"
6	PCAP121M	CAP SCREW M6-1 X 20 LH
8	P1028Z2009	IMPELLER WASHER
9V2	P1029Z2010V2	IMPELLER 12-3/4" ALUM V2.09.11
10	P1028Z2011	COLLECTOR BODY
11	PW07	FLAT WASHER 5/16
13	PFB01	FLANGE BOLT 5/16-18 X 1/2
14	PB03	HEX BOLT 5/16-18 X 1
15V2	P1030Z2015V2	PADDLE SWITCH V2.09.11
16V2	P1030Z2016V2	MOTOR 3HP 220V 1PH V2.09.11
16V2-1	P1030016-1	MOTOR FAN COVER
16V2-2	P1030016-2	MOTOR FAN
16V2-3	P1030Z2016V2-3	CAPACITOR COVER V2.09.11
16V2-4	P1030Z2016V2-4	S CAPACITOR 500M 125V V2.09.11
16V2-5	P1030Z2016V2-5	JUNCTION BOX V2.09.11
16V2-6	P1030Z2016V2-6	R CAPACITOR 40M 300V V2.09.11
17	PN02	HEX NUT 5/16-18
18	P1030018	METAL "Y" OUTLET
19	P1030019	LEFT COLLECTOR
20	T20543	LOWER DUST COLLECTOR BAG
21	P1028Z2023	COLLECTOR SUPPORT

REF	PART #	DESCRIPTION
22	P0548Z024	RIGHT COLLECTOR
23	P1028Z2028	RUBBER GASKET
24	P1028Z2026	UPPER BAG SUPPORT (G1030Z2)
25	G5556	UPPER BAG 2.5 MICRON (G1030Z2)
25	H5783	CANISTER FILTER (G0562Z)
26	P1028Z2025	SPACER
27	P1030Z2027	INLET 7" X 4" X 4" X 4"
27-1	P1028Z2029-1	INLET CAP 4"
28	PK28M	KEY 7 X 7 X 29
29V2	P1030Z2029V2	POWER CORD 14G X 3C 6' 6-20 V2.09.11
30	PWR1012	WRENCH 10 X 12
31	PAW05M	HEX WRENCH 5MM
32	P1030Z2P032	BELT CLAMP
33	PS06	PHLP HD SCR 10-24 X 3/8
34V2	P1030Z2104V2	MACHINE ID LABEL CSA 09.11 (G1030Z2)
34V2	P0562Z034V2	MACHINE ID LABEL CSA 09.11 (G0562Z)
35	P1030Z2035	FOAM STRIP 4 X 20MM
36	PLABEL-11	SAFETY GLASSES LABEL
37	PLABEL-39	RESPIRATOR LABEL
38	PLABEL-59	HANDS/OUTLET LABEL
39	PLABEL-14	ELECTRICITY LABEL
40	PLABEL-12A	READ MANUAL LABEL
42	G8588	GRIZZLY NAMEPLATE- SMALL
43	PPAINT-1	GRIZZLY GREEN PAINT (G1030Z2)

H5783 Canister Filter Assembly



REF	PART #	DESCRIPTION
1	PH5783001	CLEANING HANDLE
2	PB83M	HEX BOLT M6-1 X 16
3	PH5783003	CANISTER FILTER
4	PH5783004	HEX SPINDLE
5	PH5783005	THRUST BEARING 12 X 14 X 6
6	PH5783006	BEARING PLATE
7	PS09M	PHLP HD SCR M5-.8 X 10
8V2	PH5783008V2	PLASTIC FLAP BOARD V2.09.11
9	PS68M	PHLP HD SCR M6-1 X 10
12	PS20M	PHLP HD SCR M5-.8 X 15
14	PH5783014	BOTTOM PLATE
15	PH5783015	SUPPORT TAB
16	PN06M	HEX NUT M5-.8
17	PW06	FLAT WASHER 1/4
18	PS68M	PHLP HD SCR M6-1 X 10
19	PH5783019	SPONGE GASKET 10 X 15MM
20	PH5783020	HANDLE SLEEVE
21	PH5783021	HANDLE CAP
22	PH5783022	QUICK RELEASE CLAMP
23	PH5783023	FOAM STRIP 20MM X 156CM
24	PH5783024	FOAM STRIP 42MM X 156CM
26	PW03M	FLAT WASHER 6MM

