

CBSE Class 10 Science MCQ Chapter 6 Life Processes

Q1) In amoeba, food is digested in the:

- (a) food vacuole
- (b) mitochondria
- (c) pseudopodia
- (d) chloroplast

Correct Answer: Option (a)

Q2) In which of the following groups of organisms, food materials are broken down outside the body and absorbed?

- (a) Mushroom, green plants, Amoeba
- (b) Yeast, mushroom, bread mould
- (c) Paramecium, Amoeba, Cuscuta
- (d) Cuscuta, lice, tapeworm

Correct Answer: Option (b)

Q3) The contraction and expansion movement of the walls of the food pipe is called:

- (a) translocation
- (b) transpiration
- (c) peristaltic movement
- (d) digestion

Correct Answer: Option (c)

Q4) What are the products obtained by anaerobic respiration in plants?

- (a) Lactic acid + Energy
- (b) Carbon dioxide + Water + Energy
- (c) Ethanol + Carbon dioxide + Energy
- (d) Pyruvate

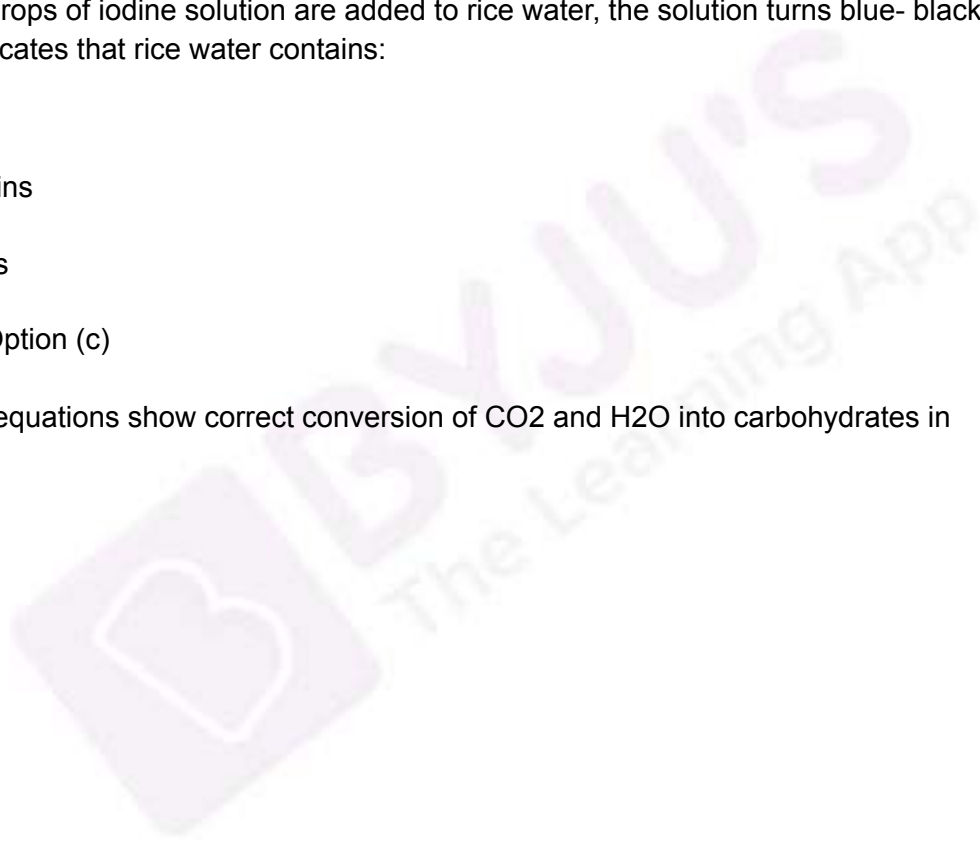
Correct Answer: Option (c)

Q5) When a few drops of iodine solution are added to rice water, the solution turns blue- black in colour. This indicates that rice water contains:

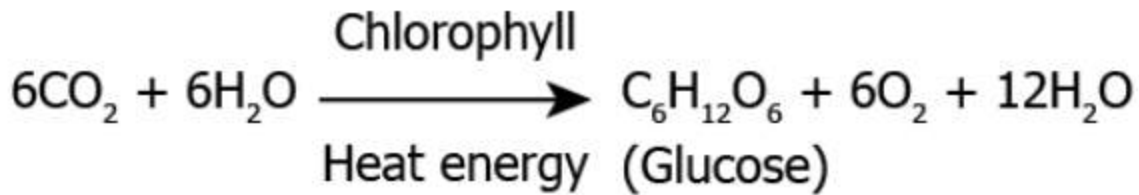
- (a) fats
- (b) complex proteins
- (c) starch
- (d) simple proteins

Correct Answer: Option (c)

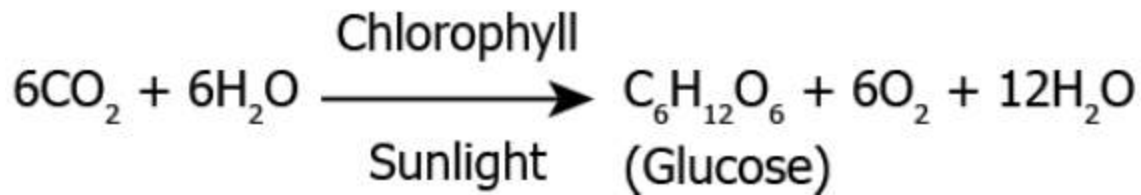
Q6) Which of the equations show correct conversion of CO₂ and H₂O into carbohydrates in plants?



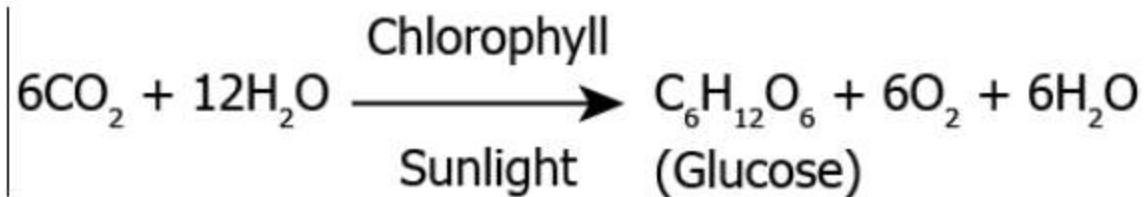
(a)



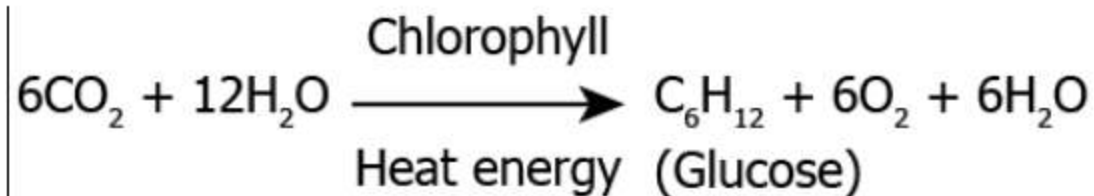
(b)



(c)



(d)



Correct Answer: Option (c)

Q7) The respiratory pigment in human beings is:

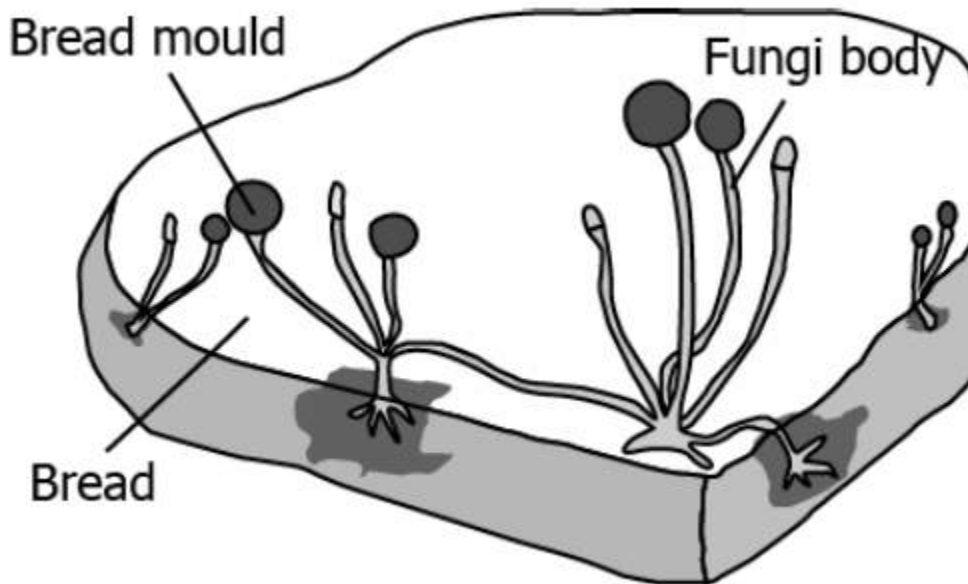
- (a) carotene
- (b) chlorophyll
- (c) haemoglobin
- (d) mitochondria

Correct Answer: Option (c)

- Q8) Which of the following is the important characteristic of Emphysema:
- (a) Destruction of the alveolar wall and air sacs in the lungs are damaged.
 - (b) Increase in the growth of the lung tissue.
 - (c) Inflammation in the wall of bronchi.
 - (d) Thickening of the artery walls of the lungs.

Correct Answer: Option (a)

- Q9) The image shows the bread moulds on a bread



How do these fungi obtain nutrition?

- (a) by eating the bread on which it is growing
- (b) by using nutrients from the bread to prepare their own food
- (c) by breaking down the nutrients of bread and then absorbing them
- (d) by allowing other organisms to grow on the bread and then consuming them

Correct Answer: Option (c)

Q10) The characteristic processes observed in anaerobic respiration are

- i) presence of oxygen
 - ii) release of carbon dioxide
 - iii) release of energy
 - iv) release of lactic acid
- (a) i, ii) only
 - (b) i, ii, iii) only
 - (c) ii, iii, iv) only
 - (d) iv) only

Correct Answer: Option (c)

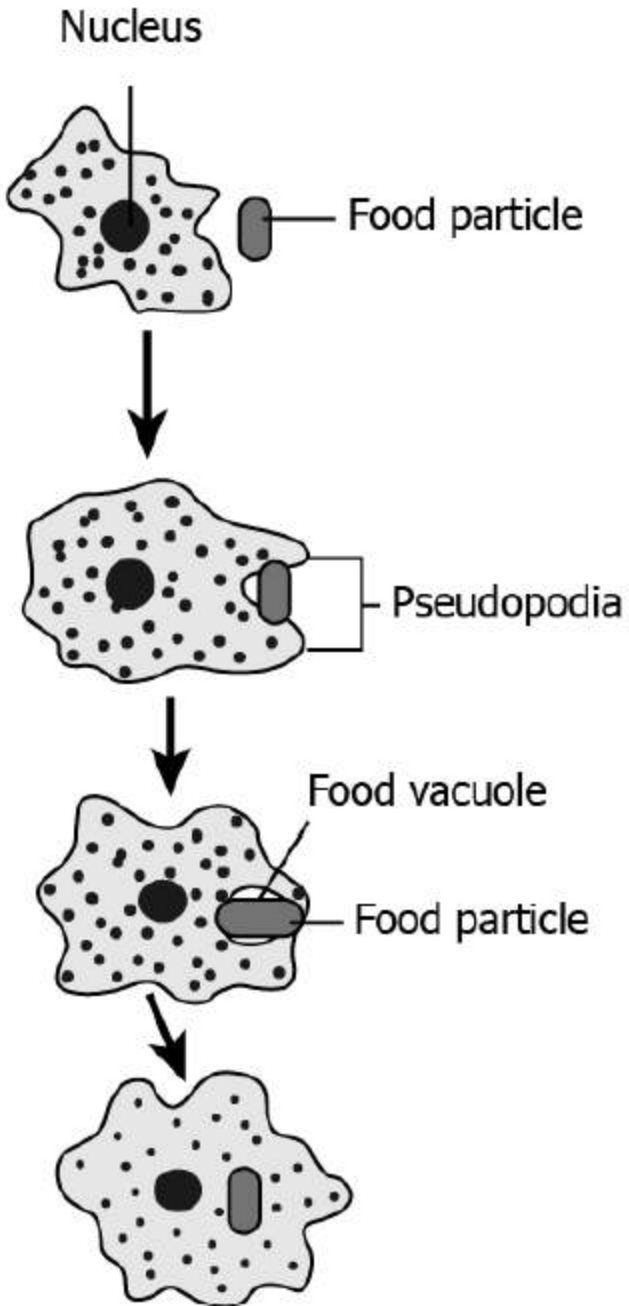
Q11) The opening and closing of the stomatal pore depends upon

- (a) Oxygen
- (b) temperature
- (c) water in the guard cells
- (d) concentration of CO_2

Correct Answer: Option (c)

Q12) The image shows how Amoeba obtains nutrition.





How is this process advantageous for Amoeba?

- (a) capturing of food takes less time
- (b) complex food can be digested easily
- (c) more amount of food can be consumed
- (d) fast distribution of nutrition within the body

Correct Answer: Option (d)

Q13) A plant gets rid of excess water through transpiration. Which is a method used by plants to get rid of solid waste products?

- (a) shortening of stem
- (b) dropping down of fruits
- (c) shedding of yellow leaves
- (d) expansion of roots into the soil

Correct Answer: Option (c)

Q14) Chemicals present in the tobacco smoke lead to the breakdown of the elastic tissue in the alveoli. Name this specific condition.

- (a) Heart disease
- (b) Emphysema
- (c) Bronchitis
- (d) Lung cancer

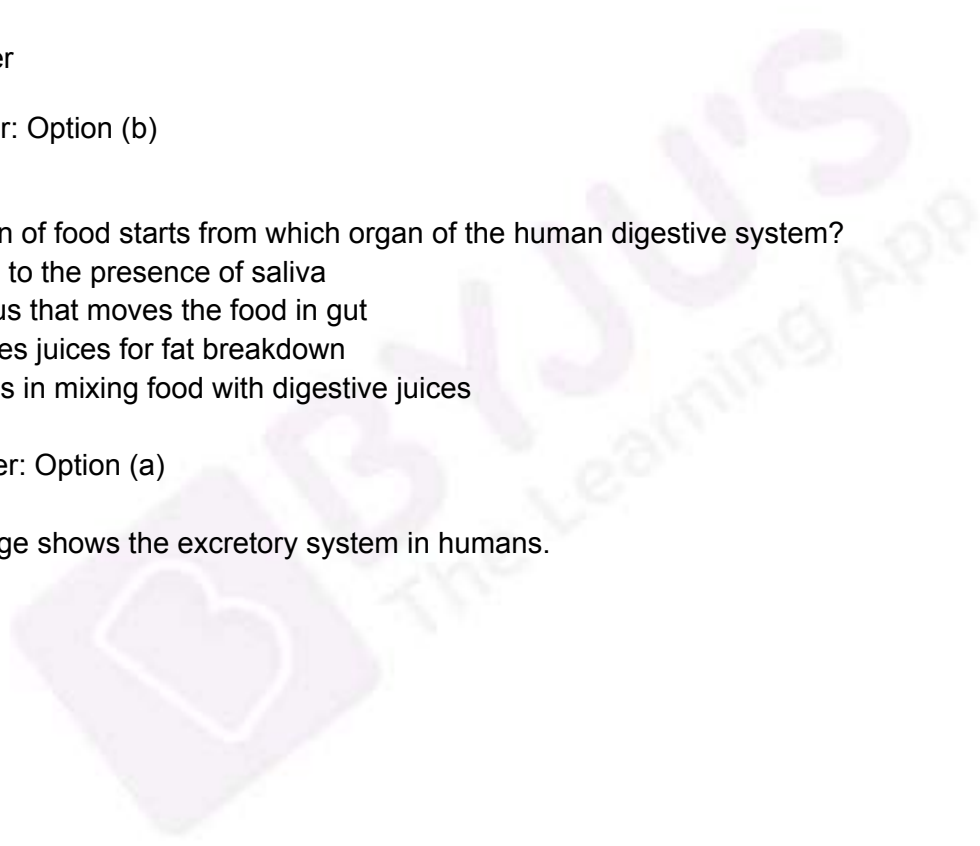
Correct Answer: Option (b)

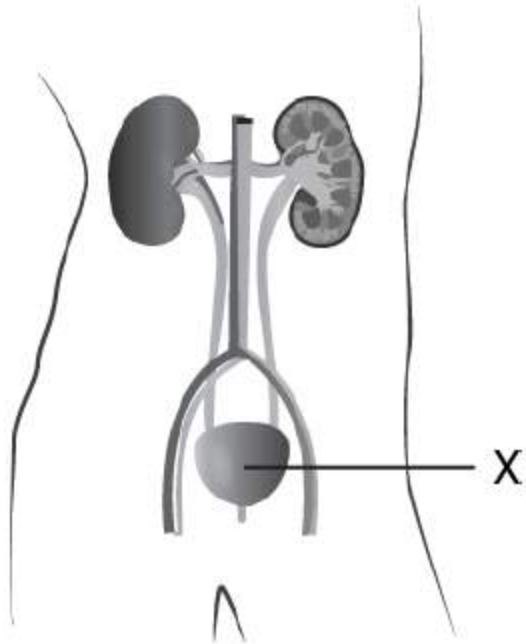
Q15) Digestion of food starts from which organ of the human digestive system?

- (a) mouth due to the presence of saliva
- (b) oesophagus that moves the food in gut
- (c) that releases juices for fat breakdown
- (d) which helps in mixing food with digestive juices

Correct Answer: Option (a)

Q16) The image shows the excretory system in humans.



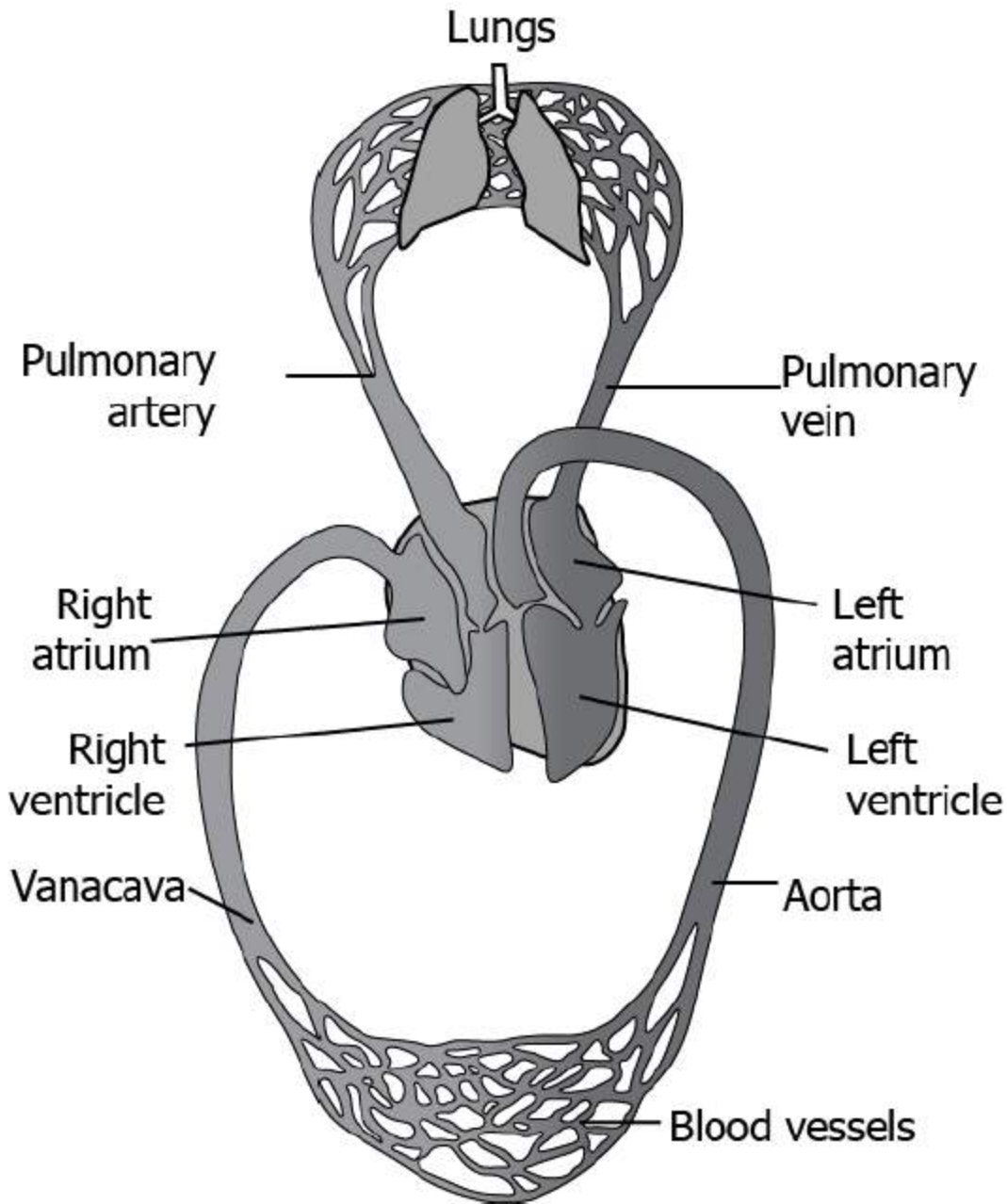


What is the importance of the labelled part in the excretory system?

- (a) It produces urine.
- (b) It filters waste from the blood.
- (c) It stores the urine till urination.
- (d) It carries urine from the kidney to the outside.

Correct Answer: Option (c)

Q17) The image shows the transport of gases in the body through the heart and lungs.



Which option correctly shows the transport of oxygen to the cell?

- (a) Lungs → pulmonary vein → left atrium → left ventricle → aorta → body cells
- (b) Lungs → pulmonary vein → right atrium → right ventricle → aorta → body cells
- (c) Lungs → pulmonary artery → left atrium → left ventricle → vena cava → body cells
- (d) Lungs → pulmonary artery → right atrium → right ventricle → vena cava → body cells

Correct Answer: Option (a)

Q18) What is the percentage of the oxygen in the expired air when a person is resting:

- (a) 12%

- (b) 16%
- (c) 20%
- (d) 24%

Correct Answer: Option (b)

Q19) How is food transported from phloem to the tissues according to plants' needs?

- (a) food is transported along with the water in the plant's body.
- (b) food is transported in only direction like water in the plant body through xylem.
- (c) food is transported from a region with low concentration to higher concentration.
- (d) Food is transported from a region where it is produced to other parts of the plants.

Correct Answer: Option (d)

Q20) Which is the correct sequence of body parts in the human alimentary canal?

- (a) Mouth → stomach → small intestine → large intestine → oesophagus
- (b) Mouth → oesophagus → stomach → small intestine → large intestine
- (c) Mouth → stomach → oesophagus → small intestine → large intestine
- (d) Mouth → oesophagus → stomach → large intestine → small intestine

Correct Answer: Option (b)

