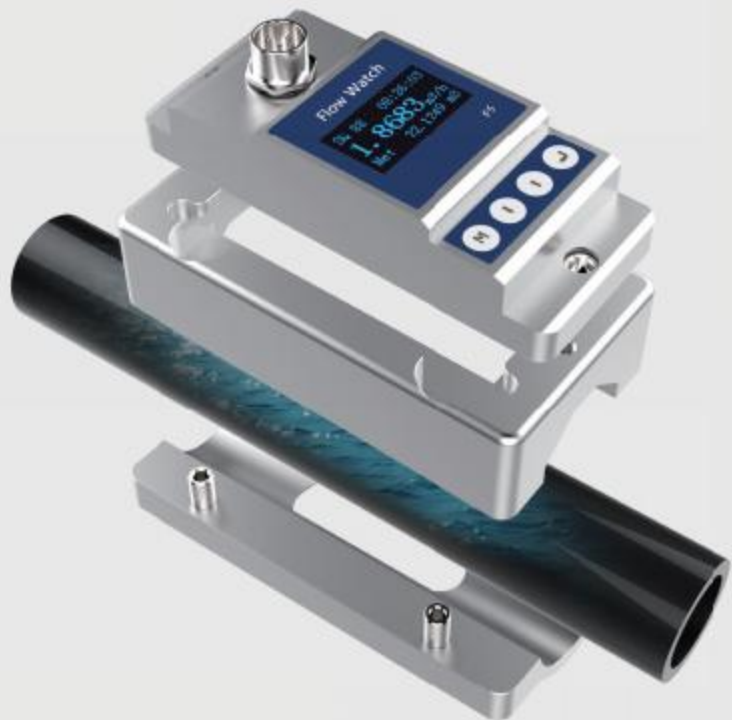


# FHM500 Flow Watch™

Wear a watch on your pipe



## Clamp On Type Flow Watch

- Clamp on type, No need to cut the pipe or do any other changes .
- No professional product knowledge required, installation and measurement can be done based on the guide .
- No moving parts or pressure changes involved, installation can be done without stop provide .

## PRODUCT INTRODUCTION

FHM500 is very unique in its structural design. It uses a circular magnetic steel to achieve automatic connection during installation. It takes only 2-3 minutes to complete the whole process from installation to measurement. It also adopts the current popular OLED display, which makes it easy to read in low light conditions.



FHM500 is widely used in the production process for flow measurement and monitoring. The application of the product continuously and effectively controls the flow of the fluid, so as to improve the yield of the product and even save the input of the personnel, bringing benefits to the production enterprise.

FHM500 can meet different pipe requirements: stainless steel pipe, carbon steel pipe, copper pipe, plastic pipe (PVC, PVDF, PPR, PPH, HDPE, etc.).



FHM500 also satisfies different clean fluid measurements: various acids, alcohols, chemical solvents, alcohol, beverage water, Coca-Cola water, etc.



Clamp-on type

# FHM500 Flow Watch

## COMPONENT PARTS



Flow Watch™



Upper bracket



Base bracket



Connecting cables

## APPLICATION

Clamp-on type



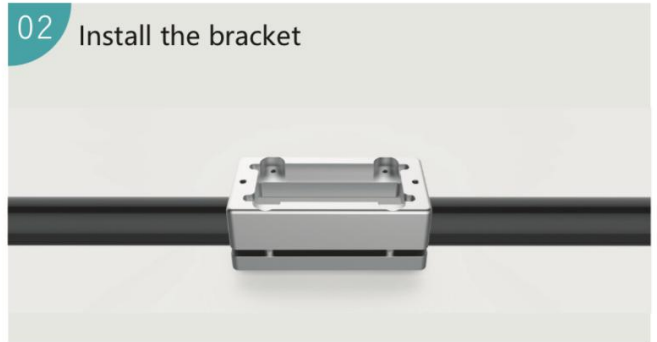
## INSTALLATION STEPS

### 01 Clean the tube



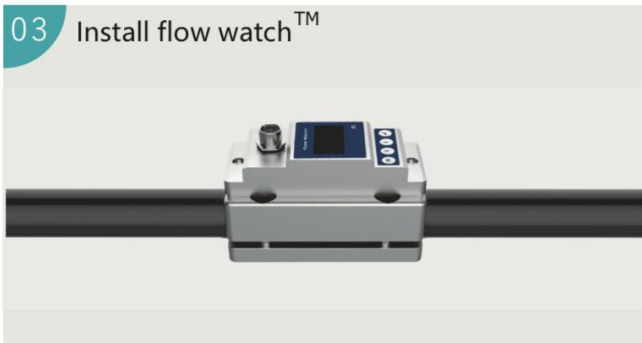
Make sure no dirt, paint, or other stains on the surface of the tube.

### 02 Install the bracket



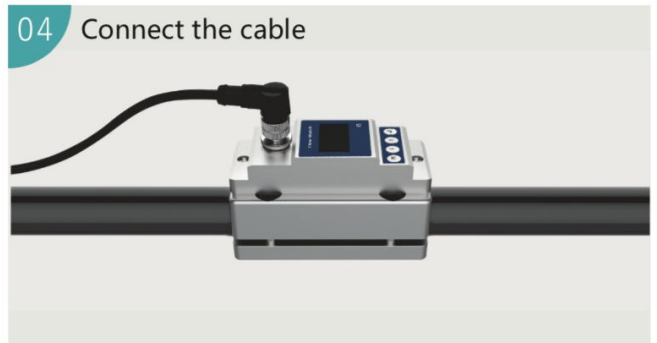
Align flow meter to the pipe position, Install screw on top part of the bracket, the bottom part of the bracket will automatically connect with the top part. tighten the four M4 screws.

### 03 Install flow watch™



Take the cover off the sensor, put the flow meter into Upper bracket, and tighten two M4 screws.

### 04 Connect the cable



Take out the cable, connect it to the socket, and tighten up.

### 05 Run the flow watch™



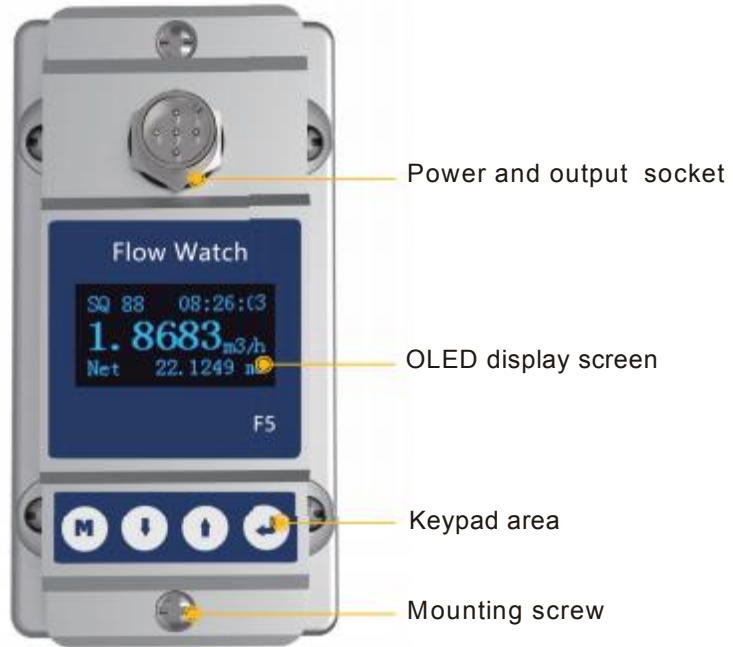
Please refer to the manual for cable connection; Power on and see if the  $SQ \geq 50$  which indicates that the measurement has been stable.

# FHM500 Flow Watch

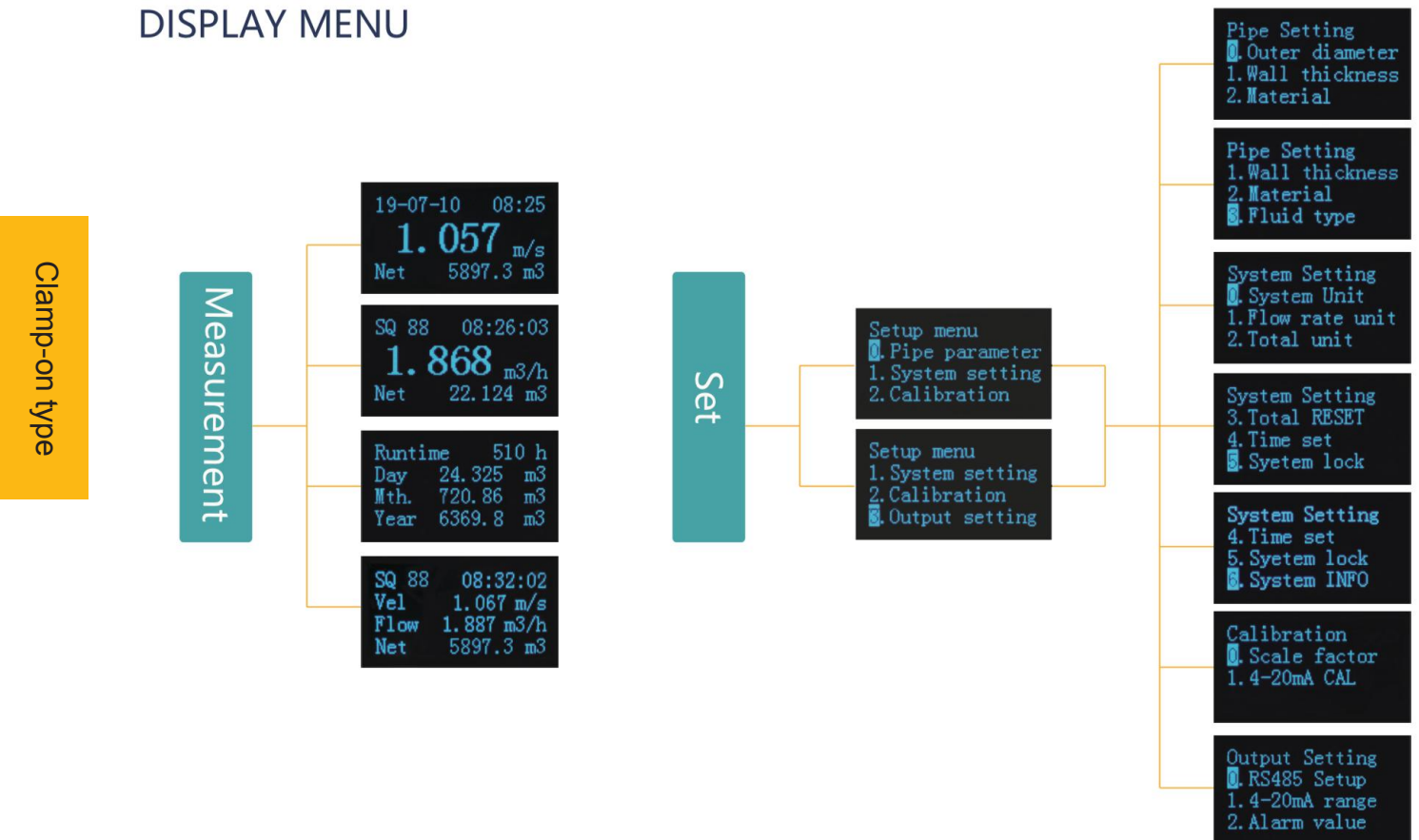
## FLOW WATCH SETTING

Special instructions:

Flow Watch™, which is designed for different pipe diameter and materials, will be set in standard setting before it leaves the factory. There is no need to reset.



## DISPLAY MENU



## PERFORMANCE INDEX

Product	FlowWatch™
Model	FHM500
Flowrange	0.1 m/s ~ 5.0 m/s
Accuracy	± 2.0%
Repeatability	0.8%
Pipesize	φ9.53~φ90
Datastorage	Daily, monthly, and Annual. Flow Totalizer
Analogoutput	4 ~ 20mA, Maximum load, 600Ω
Alarmoutput	OCT, Upper and lower limit alarm function (optional)
Communication	RS485, support Modbus communication protocol
Powersupply	24VDC
Cablelength	1.8m
Keypad	Four light touch buttons
Screen	OLED 128*64 display screen
Units	Metric and imperial units are available, Cubic Meters(m <sup>3</sup> ), Liters(L), USA Gallons(GAL)/hour, /min, Default unit setting: m <sup>3</sup> /h
Totalizer	Six bit digit
Pipermaterial	Stainless steel pipe, carbon steel pipe, copper pipe, plastic pipe
Case material	Aluminum alloy
Environmenttemp	0°C - 50°C
Mediumtemp.	0°C-80°C (Normal temp. sensor) , 0°C-150°C (High temp. Sensor)
Environmenthumidity	0-95% relative humidity, without condensation
IP Grade	IP54

Clamp-on type

Product model	F5-φ9.53	F5-φ12.7	F5-φ15	F5-φ20	F5-φ25	F5-φ32
Weight(KG)	0.91	0.90	0.90	0.84	0.84	0.82
Product model	F5-φ40	F5-φ50	F5-φ63	F5-φ75	F5-φ90	
Weight(KG)	0.88	0.98	1.43	1.52	1.95	

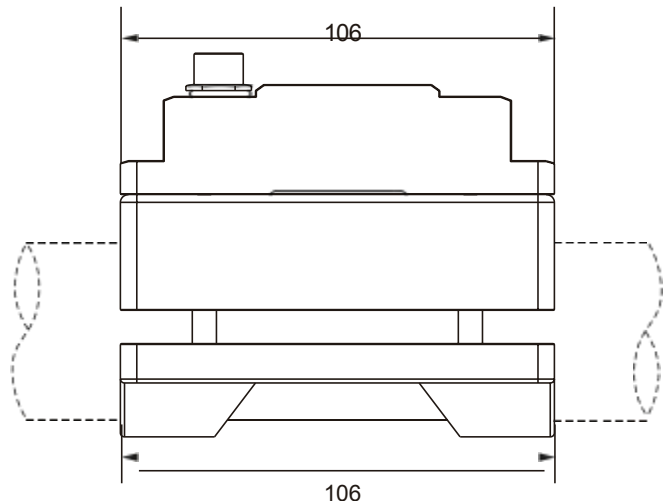
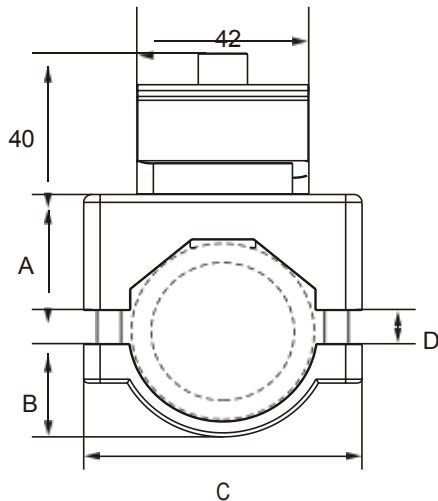
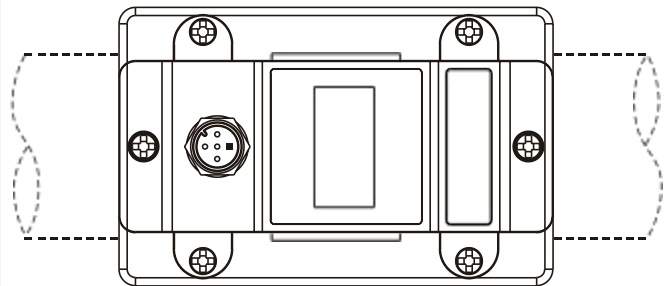
## PIPING SPECIFICATION

Model	F5-φ9.53	F5-φ12.7	F5-φ15	F5-φ20	F5-φ25	F5-φ32
Outer diameter	φ9.53	φ12.7	φ15	φ20	φ25	φ32
Inner diameter	8mm	--	10m m	15m m	20m m	25m m
Nominal name	DN8	--	DN10	DN15	DN20	DN25

Model	F5-φ40	F5-φ50	F5-φ63	F5-φ75	F5-φ90	
Outer diameter	φ40	φ50	φ63	φ75	φ90	
Inner diameter	32m m	40m m	50m m	65m m	80m m	
Nominal name	DN32	DN40	DN50	DN65	DN80	

## SPECIFICATION SIZE

Model	A (mm)	B (mm)	C (mm)	D (mm)	
				min	max
F5-φ9.53	25	10	58	1.5/φ9.53	6/φ14.03
F5-φ12.7	25	10	58	1/φ12.7	6/φ17.7
F5-φ15	25	10	58	1/φ12.7	6/φ17.7
F5-φ20	25	10	58	1/φ16.5	7.5/φ23
F5-φ25	25	15	58	1/φ25	4/φ28
F5-φ32	28.5	18.5	58	1/φ32	4/φ35
F5-φ40	29.5	24	68	1/φ38	9/φ45
F5-φ50	36	27	78	1/φ48	7/φ54
F5-φ63	41	32	91	1.5/φ58	8.5/φ64
F5-φ75	46.5	40	105	1/φ72	7/φ78
F5-φ90	51.5	43	119	1/φ80	13/φ92



Clamp-on type