

# 2025 CLEMSON GYMNASTICS

## MEET-BY-MEET BREAKDOWN

DATE	MEET	TEAM	VAULT	BARS	BEAM	FLOOR	TOTAL
1.10	Sprouts Collegiate Quad	CLEMSON	48.800	49.025	48.775	48.750	195.350
		Michigan	48.950	48.975	48.775	49.225	195.925
		Arizona	49.025	49.075	49.225	48.500	195.825
		NC State	48.875	48.850	48.600	48.675	195.000
1.17	at Pitt*	CLEMSON	49.025	48.825	48.950	48.700	195.500
		Pittsburgh	48.875	48.650	48.850	48.750	195.100
1.26	at Cal*	CLEMSON	48.900	49.125	49.025	49.175	196.225
		California	49.175	49.400	48.875	49.475	196.925
1.31	vs. Pitt*	CLEMSON	48.875	48.475	48.775	49.225	195.350
		Pittsburgh	48.850	48.725	48.950	48.750	195.275
2.9	at North Carolina*	CLEMSON	48.750	49.250	48.725	49.075	195.800
		North Carolina	48.850	49.200	49.100	49.425	196.575
2.14	vs. NC State*	CLEMSON	48.850	49.000	48.975	49.125	195.950
		NC State	49.000	49.075	48.800	49.175	196.050
2.23	vs. Stanford*	CLEMSON	49.050	49.250	48.975	49.300	196.575
		Stanford	49.000	49.350	49.175	49.400	196.925
2.28	vs. NH / TWU	CLEMSON	49.150	49.125	48.475	49.075	195.825
		Texas Woman's	48.975	48.325	47.500	49.175	193.975
		New Hampshire	48.750	48.100	47.750	47.725	192.325
3.9	at GWU/Penn State						
3.14	vs. Penn State						
3.22	ACC Championship						
<b>SEASON HIGHS</b>		<b>CLEMSON</b>	49.150	49.250	49.025	49.300	196.575
		OPPONENT	49.175	49.400	49.225	49.475	196.925
<b>SEASON AVERAGES</b>		<b>CLEMSON</b>	48.925	49.009	48.834	49.053	195.822
		OPPONENT	48.939	48.884	48.691	48.934	195.445

# 202 CLEMSON GYMNASTICS



## MOLLY ARNOLD

R-Junior • Bloomington, Minn.

### CAREER HIGHS <sup>\*at Utah State</sup>

Vault	Bars	Beam	Floor	All-Around
9.975	9.825*	---	9.950	---

### SEASON HIGHS

Vault	Bars	Beam	Floor	All-Around
9.625	---	---	9.900	---

DATE	MEET	VAULT	BAR	BEAM	FLOOR	AA
1.10	at Sprouts Quad	9.625	---	---	9.775	---
1.17	at Pitt*	---	---	---	9.700	---
1.26	at Cal*	---	---	---	9.825	---
1.31	Pitt*	---	---	---	9.600	---
2.9	at UNC*	---	---	---	9.675	---
2.14	NC State*	---	---	---	9.800	---
2.23	Stanford*	---	---	---	9.900	---
2.28	UNH/TWU	9.725	---	---	9.700	---
3.9	at GWU/PSU	---	---	---	---	---
3.14	Penn State	---	---	---	---	---
3.22	ACC Championship	---	---	---	---	---

^ event winner

### PLAYER NOTES

*Yurchenko Half (9.95 SV at Sprouts)*

*Yurchenko 1.5 (10.0 SV vs UNH/TWU)*

- 2024 WCGA Scholastic All-American (4.0)
- 2024 CSC Academic All-District
- 2024 All-ACC Selection (vault, floor)
- 2024 ACC All-Championship Team selection (vault, floor)
- 2024 NCAA Individual Selection (vault, floor)
- Has two career event wins (1 floor, 1 vault)
- ACC Specialist of the Week (Mar.18, 2024)
- Recorded a career-high 9.975 on vault at UCLA (2024)
- Transfer from Utah State



## TAKODA BERRY

Sophomore • Newport Beach, Calif.

### CAREER HIGHS

Vault	Bars	Beam	Floor	All-Around
---	9.875	---	---	---

### SEASON HIGHS

Vault	Bars	Beam	Floor	All-Around
---	9.875	---	---	---

DATE	MEET	VAULT	BAR	BEAM	FLOOR	AA
1.10	at Sprouts Quad	---	---	---	9.800	---
1.17	at Pitt*	---	9.825^	---	---	---
1.26	at Cal*	---	---	---	9.725	---
1.31	Pitt*	---	---	---	9.775	---
2.9	at UNC*	---	---	---	9.800	---
2.14	NC State*	---	---	---	---	---
2.23	Stanford*	---	---	---	9.875	---
2.28	UNH/TWU	---	---	---	9.725	---
3.9	at GWU/PSU	---	---	---	---	---
3.14	Penn State	---	---	---	---	---
3.22	ACC Championship	---	---	---	---	---

^ event winner

### PLAYER NOTES

- Earned first-career event win at Pitt (bars)



## TRINITY BROWN

R-Junior • Upper Marlboro, Md.

### CAREER HIGHS <sup>\*at Utah State</sup>

Vault	Bars	Beam	Floor	All-Around
9.900	9.875	---	9.925*	---

### SEASON HIGHS

Vault	Bars	Beam	Floor	All-Around
9.825	---	---	9.750	---

DATE	MEET	VAULT	BAR	BEAM	FLOOR	AA
1.10	at Sprouts Quad	9.825	---	---	---	---
1.17	at Pitt*	9.825^	---	---	9.750	---
1.26	at Cal*	9.800	---	---	---	---
1.31	Pitt*	9.825	---	---	---	---
2.9	at UNC*	---	---	---	---	---
2.14	NC State*	---	---	---	---	---
2.23	Stanford*	---	---	---	---	---
2.28	UNH/TWU	---	---	---	---	---
3.9	at GWU/PSU	---	---	---	---	---
3.14	Penn State	---	---	---	---	---
3.22	ACC Championship	---	---	---	---	---

^ event winner

### PLAYER NOTES

*Will miss remainder of 2025 following achilles injury vs Pitt*

- Transfer from Utah State
- Has three event wins (vault)
- Set a career-high on vault (9.900) in Clemson's win over Pitt; won event
- 2022 Academic All-Mountain Rim Gymnastics Conference



## KATE BRYANT

Sophomore • Littleton, Colo.

### CAREER HIGHS

Vault	Bars	Beam	Floor	All-Around
9.775	---	---	---	---

### SEASON HIGHS

Vault	Bars	Beam	Floor	All-Around
9.750	---	---	---	---

DATE	MEET	VAULT	BAR	BEAM	FLOOR	AA
1.10	at Sprouts Quad	---	---	---	---	---
1.17	at Pitt*	---	---	---	---	---
1.26	at Cal*	---	---	---	---	---
1.31	Pitt*	---	---	---	---	---
2.9	at UNC*	9.750	---	---	---	---
2.14	NC State*	9.600	---	---	---	---
2.23	Stanford*	9.700	---	---	---	---
2.28	UNH/TWU	---	---	---	---	---
3.9	at GWU/PSU	---	---	---	---	---
3.14	Penn State	---	---	---	---	---
3.22	ACC Championship	---	---	---	---	---

^ event winner

### PLAYER NOTES

- Recorded a career-high 9.775 on vault vs Air Force (2024)
- Has exhibited on vault at Cal and vs Pitt

# 2024 CLEMSON GYMNASTICS



## SIERRA CHURCH

Sophomore • Lincolnton, N.C.

### CAREER HIGHS

Vault	Bars	Beam	Floor	All-Around
---	---	9.925	---	---

### SEASON HIGHS

Vault	Bars	Beam	Floor	All-Around
---	---	9.900	---	---

DATE	MEET	VAULT	BAR	BEAM	FLOOR	AA
1.10	at Sprouts Quad	---	---	9.750	---	---
1.17	at Pitt*	---	---	9.850	---	---
1.26	at Cal*	---	---	9.150	---	---
1.31	Pitt*	---	---	9.775	---	---
2.9	at UNC*	---	---	9.775	---	---
2.14	NC State*	---	---	9.900^	---	---
2.23	Stanford*	---	---	9.725	---	---
2.28	UNH/TWU	---	---	9.425	---	---
3.9	at GWU/PSU	---	---	---	---	---
3.14	Penn State	---	---	---	---	---
3.22	ACC Championship	---	---	---	---	---

^ event winner

### PLAYER NOTES

- Earned a \$10,000 surprise scholarship from Walk-Ons Sports Bistreaux in the offseason
- Has two event wins (beam)
- Earned her first event win in the pink meet against North Carolina on Feb. 23, 2024 with a career-high 9.925 on beam.
- Earned her second-career event win in the 2025 pink meet, against NC State with a 9.900 on beam.



## BRIE CLARK

R-Junior • Daphne, Ala.

### CAREER HIGHS <sup>\*at Utah State</sup>

Vault	Bars	Beam	Floor	All-Around
9.825*	---	9.925	9.950	---

### SEASON HIGHS

Vault	Bars	Beam	Floor	All-Around
---	---	9.900	9.950	---

DATE	MEET	VAULT	BAR	BEAM	FLOOR	AA
1.10	at Sprouts Quad	---	---	9.800	9.300	---
1.17	at Pitt*	---	---	9.225	9.625	---
1.26	at Cal*	---	---	9.800	9.900^	---
1.31	Pitt*	---	---	9.900^	9.925^	---
2.9	at UNC*	---	---	9.825	9.950^	---
2.14	NC State*	---	---	9.675	9.925^	---
2.23	Stanford*	---	---	9.825	9.925	---
2.28	UNH/TWU	---	---	9.875^	9.800	---
3.9	at GWU/PSU	---	---	---	---	---
3.14	Penn State	---	---	---	---	---
3.22	ACC Championship	---	---	---	---	---

^ event winner

### PLAYER NOTES

- First gymnast to **successfully complete** the Biles 1 in a collegiate meet (Feb. 28, 2025)
- 2024 WCGA Scholastic All-American
- 2024 All-ACC Selection (floor)
- 2024 NCAA Individual Selection (floor)
- 2x ACC Specialist of the week (2024)
- Has 11 event wins in her Clemson career (8 floor, 3 beam)
- Transfer from Utah State
- Women's Collegiate Gymnastics Association Regular Season Second Team All-American (2022)
- Mountain Rim Gymnastics Conference Floor Specialist of the Year (2022)



## HANNAH CLARK

Freshman • Huntington Beach, Calif.

### CAREER HIGHS

Vault	Bars	Beam	Floor	All-Around
---	9.875	---	---	---

### SEASON HIGHS

Vault	Bars	Beam	Floor	All-Around
---	9.875	---	---	---

DATE	MEET	VAULT	BAR	BEAM	FLOOR	AA
1.10	at Sprouts Quad	---	9.250	---	---	---
1.17	at Pitt*	---	9.800	---	---	---
1.26	at Cal*	---	9.875	---	---	---
1.31	Pitt*	---	9.275	---	---	---
2.9	at UNC*	---	9.875^	---	---	---
2.14	NC State*	---	9.825	---	---	---
2.23	Stanford*	---	9.875	---	---	---
2.28	UNH/TWU	---	9.875^	---	---	---
3.9	at GWU/PSU	---	---	---	---	---
3.14	Penn State	---	---	---	---	---
3.22	ACC Championship	---	---	---	---	---

^ event winner

### PLAYER NOTES

- 2025 ACC Newcomer Watch List
- Earned first-career event win at North Carolina
- Has two event wins (bars)



## MAGGIE HOLMAN

Sophomore • Raleigh, N.C.

### CAREER HIGHS

Vault	Bars	Beam	Floor	All-Around
9.850	---	9.100	9.900	---

### SEASON HIGHS

Vault	Bars	Beam	Floor	All-Around
9.850	---	---	9.850	---

DATE	MEET	VAULT	BAR	BEAM	FLOOR	AA
1.10	at Sprouts Quad	9.525	---	---	9.650	---
1.17	at Pitt*	9.825^	---	---	---	---
1.26	at Cal*	9.775	---	---	9.625	---
1.31	Pitt*	9.850^	---	---	9.850	---
2.9	at UNC*	9.725	---	---	9.825	---
2.14	NC State*	9.750	---	---	8.775	---
2.23	Stanford*	9.850	---	---	9.625	---
2.28	UNH/TWU	9.850	---	---	9.825	---
3.9	at GWU/PSU	---	---	---	---	---
3.14	Penn State	---	---	---	---	---
3.22	ACC Championship	---	---	---	---	---

^ event winner

### PLAYER NOTES

- **Front Handspring Pike Half (10.0)**
- 2024 All ACC-Tournament (vault)
- Named ACC Newcomer of the Week on Feb. 5, 2024
- Tied for her first-career event win at Pitt (vault)
- Earned her second-career event win vs Pitt (vault)

# 2024 CLEMSON GYMNASTICS



## EVE JACKSON

R-Senior • Los Angeles, Calif.

### CAREER HIGHS

Vault	Bars	Beam	Floor	All-Around
9.900	9.900	9.775	9.950	39.200

### SEASON HIGHS

Vault	Bars	Beam	Floor	All-Around
9.825	9.875	---	9.950	---

DATE	MEET	VAULT	BAR	BEAM	FLOOR	AA
1.10	at Sprouts Quad	---	9.875	---	9.750	---
1.17	at Pitt*	9.825^	9.750	---	9.775	---
1.26	at Cal*	9.625	9.800	---	9.825	---
1.31	Pitt*	9.700	9.775	---	9.825	---
2.9	at UNC*	9.725	9.825	---	9.175	---
2.14	NC State*	9.825	9.825	---	9.800	---
2.23	Stanford*	9.800	9.775	---	9.950^	---
2.28	UNH/TWU	9.825	9.825	---	9.875^	---
3.9	at GWU/PSU	---	---	---	---	---
3.14	Penn State	---	---	---	---	---
3.22	ACC Championship	---	---	---	---	---

^ event winner

### PLAYER NOTES

#### Yurchenko 1.5 (10.0 SV)

- Has five event wins at Clemson (2 bars, 1 vault, 2 floor)
- Earned a career-high 9.95 on floor vs Stanford (2/23)
- 2024 WCGA Scholastic All-American
- Transfer from Utah State
- Recorded a career-high on vault and then career-high on floor at UCLA (9.900; 9.925) (2024)
- Set a career-high all-around score (39.200) at TWU Quad (2024)
- Father, Byron, played in the NFL, CFL and World League
- Niece of DeSean Jackson



## QUINN KUHL

Sophomore • Holly Springs, N.C.

### CAREER HIGHS

Vault	Bars	Beam	Floor	All-Around
9.800	9.875	9.875	---	---

### SEASON HIGHS

Vault	Bars	Beam	Floor	All-Around
9.800	9.875	9.875	---	---

DATE	MEET	VAULT	BAR	BEAM	FLOOR	AA
1.10	at Sprouts Quad	9.775	9.775	9.750	---	---
1.17	at Pitt*	9.800	9.750	9.825	---	---
1.26	at Cal*	9.775	9.875	9.825	---	---
1.31	Pitt*	9.725	8.975	8.900	---	---
2.9	at UNC*	9.700	9.850	9.500	---	---
2.14	NC State*	9.700	9.800	9.450	---	---
2.23	Stanford*	9.725	---	9.875	---	---
2.28	UNH/TWU	9.725	---	9.775	---	---
3.9	at GWU/PSU	---	---	---	---	---
3.14	Penn State	---	---	---	---	---
3.22	ACC Championship	---	---	---	---	---

^ event winner

### PLAYER NOTES

#### Yurchenko Full (9.95 SV)

- Earned a spot in the vault, bars, and beam lineups at Sprouts Quad, then again at Pitt
- 2024 WCGA Scholastic All-American
- Set a career-high on beam vs Stanford (2025)



## LILY KURRACK

Sophomore • Tampa, Fla.

### CAREER HIGHS

Vault	Bars	Beam	Floor	All-Around
---	---	---	---	---

### SEASON HIGHS

Vault	Bars	Beam	Floor	All-Around
---	---	---	---	---

DATE	MEET	VAULT	BAR	BEAM	FLOOR	AA
1.10	at Sprouts Quad	---	---	---	---	---
1.17	at Pitt*	---	---	---	---	---
1.26	at Cal*	---	---	---	---	---
1.31	Pitt*	---	---	---	---	---
2.9	at UNC*	---	---	---	---	---
2.14	NC State*	---	---	---	---	---
2.23	Stanford*	---	---	---	---	---
2.28	UNH/TWU	---	---	---	---	---
3.9	at GWU/PSU	---	---	---	---	---
3.14	Penn State	---	---	---	---	---
3.22	ACC Championship	---	---	---	---	---

^ event winner

### PLAYER NOTES

- 2024 WCGA Scholastic All-American (4.0)



## GRACE LACROSSE

Sophomore • Lake Zurich, Ill.

### CAREER HIGHS

Vault	Bars	Beam	Floor	All-Around
---	---	---	---	---

### SEASON HIGHS

Vault	Bars	Beam	Floor	All-Around
---	---	---	---	---

DATE	MEET	VAULT	BAR	BEAM	FLOOR	AA
1.10	at Sprouts Quad	---	---	---	---	---
1.17	at Pitt*	---	---	---	---	---
1.26	at Cal*	---	---	---	---	---
1.31	Pitt*	---	---	---	---	---
2.9	at UNC*	---	---	---	---	---
2.14	NC State*	---	---	---	---	---
2.23	Stanford*	---	---	---	---	---
2.28	UNH/TWU	---	---	---	---	---
3.9	at GWU/PSU	---	---	---	---	---
3.14	Penn State	---	---	---	---	---
3.22	ACC Championship	---	---	---	---	---

^ event winner

### PLAYER NOTES

- 2024 WCGA Scholastic All-American (4.0)



# 2024 CLEMSON GYMNASTICS



## LILLY LIPPEATT

R-Sophomore • Mason, Ohio

### CAREER HIGHS

Vault	Bars	Beam	Floor	All-Around
---	9.900	9.900	9.925	---

### SEASON HIGHS

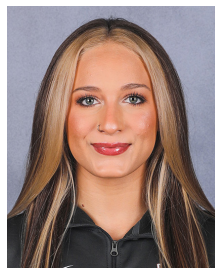
Vault	Bars	Beam	Floor	All-Around
---	9.850	9.825	9.825	---

DATE	MEET	VAULT	BAR	BEAM	FLOOR	AA
1.10	at Sprouts Quad	---	9.825	9.775	9.825	---
1.17	at Pitt*	---	9.575	9.750	9.725	---
1.26	at Cal*	---	9.700	9.750	9.775	---
1.31	Pitt*	---	9.850^	9.825	9.800	---
2.9	at UNC*	---	9.850	9.825	9.825	---
2.14	NC State*	---	9.775	9.700	9.800	---
2.23	Stanford*	---	9.800	9.800	9.675	---
2.28	UNH/TWU	---	9.850	9.800	9.750	---
3.9	at GWU/PSU	---	---	---	---	---
3.14	Penn State	---	---	---	---	---
3.22	ACC Championship	---	---	---	---	---

^ event winner

### PLAYER NOTES

- Earned first-career event win vs Pitt (bars)
- First-ever recipient of Clemson's "Lance Corporal Noah Lippeatt Esprit de Corps Award"
- 2024 ACC Newcomer of the Year
- 2024 All-ACC Selection (bars)
- 2024 ACC All-Championship Team (bars, beam)
- ACC Newcomer of the Week (Jan. 15; Jan. 22; Mar. 18, 2024)
- 2024 CSC Academic All-District
- 2024 WCGA Scholastic All-American
- First high school signee in program history (enrolled in fall 2022)



## KIELYN McCRIGHT

R-Junior • Parkland, Fla.

### CAREER HIGHS

Vault	Bars	Beam	Floor	All-Around
---	---	9.925	---	---

### SEASON HIGHS

Vault	Bars	Beam	Floor	All-Around
---	---	9.850	---	---

DATE	MEET	VAULT	BAR	BEAM	FLOOR	AA
1.10	at Sprouts Quad	---	---	9.650	---	---
1.17	at Pitt*	---	---	9.725	---	---
1.26	at Cal*	---	---	9.850	---	---
1.31	Pitt*	---	---	---	---	---
2.9	at UNC*	---	---	9.350	---	---
2.14	NC State*	---	---	---	---	---
2.23	Stanford*	---	---	---	---	---
2.28	UNH/TWU	---	---	---	---	---
3.9	at GWU/PSU	---	---	---	---	---
3.14	Penn State	---	---	---	---	---
3.22	ACC Championship	---	---	---	---	---

^ event winner

### PLAYER NOTES

- 2024 All-ACC Selection (beam)
- 2024 ACC All-Championship Team (beam)
- 2024 NCAA Individual Selection (beam)
- Tied a career-high with a 9.925 on beam at UCLA (2024)
- Earned her first event win as a Tiger vs Pitt with a 9.900 on beam (2024)
- Transfer from Utah State



## MADISON MINNER

R-Junior • Anderson, S.C.

### CAREER HIGHS

Vault	Bars	Beam	Floor	All-Around
9.900	---	---	9.900	---

### SEASON HIGHS

Vault	Bars	Beam	Floor	All-Around
9.850	---	---	9.850	---

DATE	MEET	VAULT	BAR	BEAM	FLOOR	AA
1.10	at Sprouts Quad	9.775	---	---	9.750	---
1.17	at Pitt*	9.750	---	---	9.750	---
1.26	at Cal*	9.800	---	---	9.850	---
1.31	Pitt*	9.775	---	---	9.825	---
2.9	at UNC*	9.850^	---	---	9.800	---
2.14	NC State*	9.825	---	---	9.800	---
2.23	Stanford*	9.825	---	---	9.850	---
2.28	UNH/TWU	9.875^	---	---	9.825	---
3.9	at GWU/PSU	---	---	---	---	---
3.14	Penn State	---	---	---	---	---
3.22	ACC Championship	---	---	---	---	---

^ event winner

### PLAYER NOTES

#### Tucked Yurchenko 1.5 (10.0 SV)

- 2024 WCGA Scholastic All-American
- 2024 ACC All-Championship Team (vault)
- Walk-on from nearby Anderson, S.C.
- Set a career-high on vault, 9.900, at the TWU Quad meet (2024)
- Set a career-high on floor, 9.900, vs Air Force (2024)
- Earned first-career event win vs UNC
- Has two event wins (vault)



## DANIKA NIELSEN

Freshman • Gilbert, Ariz.

### CAREER HIGHS

Vault	Bars	Beam	Floor	All-Around
---	---	9.825	---	---

### SEASON HIGHS

Vault	Bars	Beam	Floor	All-Around
---	---	9.825	---	---

DATE	MEET	VAULT	BAR	BEAM	FLOOR	AA
1.10	at Sprouts Quad	---	---	9.700	---	---
1.17	at Pitt*	---	---	9.800	---	---
1.26	at Cal*	---	---	9.800	---	---
1.31	Pitt*	---	---	9.800	---	---
2.9	at UNC*	---	---	9.800	---	---
2.14	NC State*	---	---	9.825	---	---
2.23	Stanford*	---	---	8.925	---	---
2.28	UNH/TWU	---	---	8.950	---	---
3.9	at GWU/PSU	---	---	---	---	---
3.14	Penn State	---	---	---	---	---
3.22	ACC Championship	---	---	---	---	---

^ event winner

### PLAYER NOTES

- Earned a season-high 9.825 on beam vs NC State

# 2024 CLEMSON GYMNASTICS



## LAUREN RUTHERFORD

Senior • Roswell, Ga.

### CAREER HIGHS <sup>\*at NC State</sup>

Vault	Bars	Beam	Floor	All-Around
9.925	9.925*	---	9.950	---

### SEASON HIGHS

Vault	Bars	Beam	Floor	All-Around
---	9.850	---	---	---

DATE	MEET	VAULT	BAR	BEAM	FLOOR	AA
1.10	at Sprouts Quad	---	---	---	---	---
1.17	at Pitt*	---	---	---	---	---
1.26	at Cal*	---	---	---	---	---
1.31	Pitt*	---	---	---	---	---
2.9	at UNC*	---	9.850	---	---	---
2.14	NC State*	---	9.725	---	---	---
2.23	Stanford*	---	9.825	---	---	---
2.28	UNH/TWU	---	9.825	---	---	---
3.9	at GWU/PSU	---	---	---	---	---
3.14	Penn State	---	---	---	---	---
3.22	ACC Championship	---	---	---	---	---

^ event winner

#### PLAYER NOTES

- 2024 WCGA Scholastic All-American
- Has five event wins at Clemson (four vault, one floor)
- 2024 ACC All-Championship Team (floor)
- Set a career-high on vault with a 9.925 at North Carolina, tied it at home vs UNC (2024)
- Earned her first event win as a Tiger vs William & Mary with a 9.825 on vault; Clemson's first-ever event winner (vault, vs William & Mary)
- Tied a career-high with a 9.950 (tied for Clemson's highest floor score of the season) to win floor vs NC State (tie with Molly Arnold)



## TARA WALSH

Graduate • Waterford, Mich.

### CAREER HIGHS <sup>\*at Michigan State // \*\*at Auburn</sup>

Vault	Bars	Beam	Floor	All-Around
9.875	---	9.875	---	---

### SEASON HIGHS

Vault	Bars	Beam	Floor	All-Around
9.875	---	9.875	---	---

DATE	MEET	VAULT	BAR	BEAM	FLOOR	AA
1.10	at Sprouts Quad	9.800	---	---	---	---
1.17	at Pitt*	9.750	---	---	---	---
1.26	at Cal*	9.750	---	---	---	---
1.31	Pitt*	9.700	---	9.475	---	---
2.9	at UNC*	9.700	---	---	---	---
2.14	NC State*	9.750	---	9.875	---	---
2.23	Stanford*	9.850	---	9.750	---	---
2.28	UNH/TWU	9.875^	---	9.600	---	---
3.9	at GWU/PSU	---	---	---	---	---
3.14	Penn State	---	---	---	---	---
3.22	ACC Championship	---	---	---	---	---

^ event winner

#### PLAYER NOTES

*Yurchenko Full (9.95 SV) (at Sprouts / at Pitt)*

*Yurchenko 1.5 (10.0 SV)*

- 2024 WCGA Scholastic All-American
- Transfer from Michigan State (23/24)
- Started career at Auburn (21/22)
- Earned a career-high 9.875 on beam vs NC State (2/14)
- Earned first-career event win vs UNH/TWU (vault; 2/28)



## TRINITY WEBB

Sophomore • Smithville, Mo.

### CAREER HIGHS

Vault	Bars	Beam	Floor	All-Around
---	9.900	---	---	---

### SEASON HIGHS

Vault	Bars	Beam	Floor	All-Around
---	---	---	---	---

DATE	MEET	VAULT	BAR	BEAM	FLOOR	AA
1.10	at Sprouts Quad	---	---	---	---	---
1.17	at Pitt*	---	---	---	---	---
1.26	at Cal*	---	---	---	---	---
1.31	Pitt*	---	---	---	---	---
2.9	at UNC*	---	---	---	---	---
2.14	NC State*	---	---	---	---	---
2.23	Stanford*	---	---	---	---	---
2.28	UNH/TWU	---	---	---	---	---
3.9	at GWU/PSU	---	---	---	---	---
3.14	Penn State	---	---	---	---	---
3.22	ACC Championship	---	---	---	---	---

^ event winner

#### PLAYER NOTES

- Out for the season (shoulder)
- January 2024 enrollee
- Set a career-high with a 9.900 on bars vs Air Force (2024)



## REBECCA WELLS

Graduate • Smyrna, Tenn.

### CAREER HIGHS <sup>\*at Utah State</sup>

Vault	Bars	Beam	Floor	All-Around
9.900	9.875	9.950	9.950	39.550

### SEASON HIGHS

Vault	Bars	Beam	Floor	All-Around
---	9.875	---	---	---

DATE	MEET	VAULT	BAR	BEAM	FLOOR	AA
1.10	at Sprouts Quad	---	9.750	---	---	---
1.17	at Pitt*	---	9.700	---	---	---
1.26	at Cal*	---	9.850	---	---	---
1.31	Pitt*	---	9.800	---	---	---
2.9	at UNC*	---	---	---	---	---
2.14	NC State*	---	9.775	---	---	---
2.23	Stanford*	---	9.875	---	---	---
2.28	UNH/TWU	---	9.750	---	---	---
3.9	at GWU/PSU	---	---	---	---	---
3.14	Penn State	---	---	---	---	---
3.22	ACC Championship	---	---	---	---	---

^ event winner

#### PLAYER NOTES

- 2024, 2025 AAI Award Nominee
- Has 9 individual event titles at Clemson (6 beam, 1 vault, 2 floor)
- Clemson's first-ever all-around winner (vs William & Mary) and currently the only all-around winner in program history (7)
- 2025 ACC Preseason Watch List
- 2024 All-ACC Selection (all-around, vault, beam)
- 2024 ACC All-Championship Team (all-around, floor, vault)
- 2024 NCAA Individual Selection (All-Around)
- 2024 CSC Academic All-District
- 2024 WCGA Scholastic All-American
- Set a career-high with a 9.950 on floor vs North Carolina (event win) (2024)
- Set a career-high with a 9.950 on beam at NC State, tied a career-high with a 9.900 on vault during the same meet (2024)
- Set a career-high with a 39.550 all-around score at NC State (Feb. 17, 2024)