

QUAD-LOCK R-28 [U-0.21] WALL	
TIE NAME	CONCRETE CORE THICKNESS
BLUE TIE	= 4" [102mm]
YELLOW TIE	= 6" [152mm]
GREEN TIE	= 8" [203mm]
RED TIE	= 10" [254mm]
BROWN TIE	= 12" [305mm]
BLACK TIE + XT	= 14" [356mm]
ETC.	

Material properties of Airfoam Geofoam Types

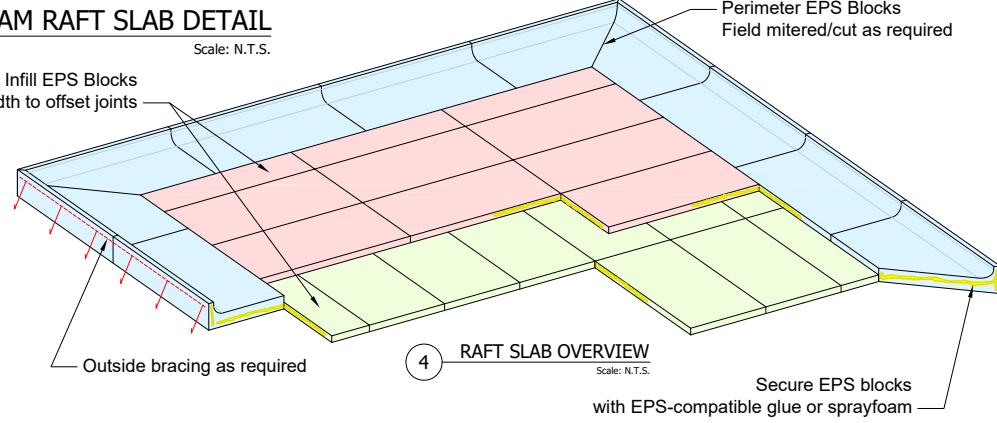
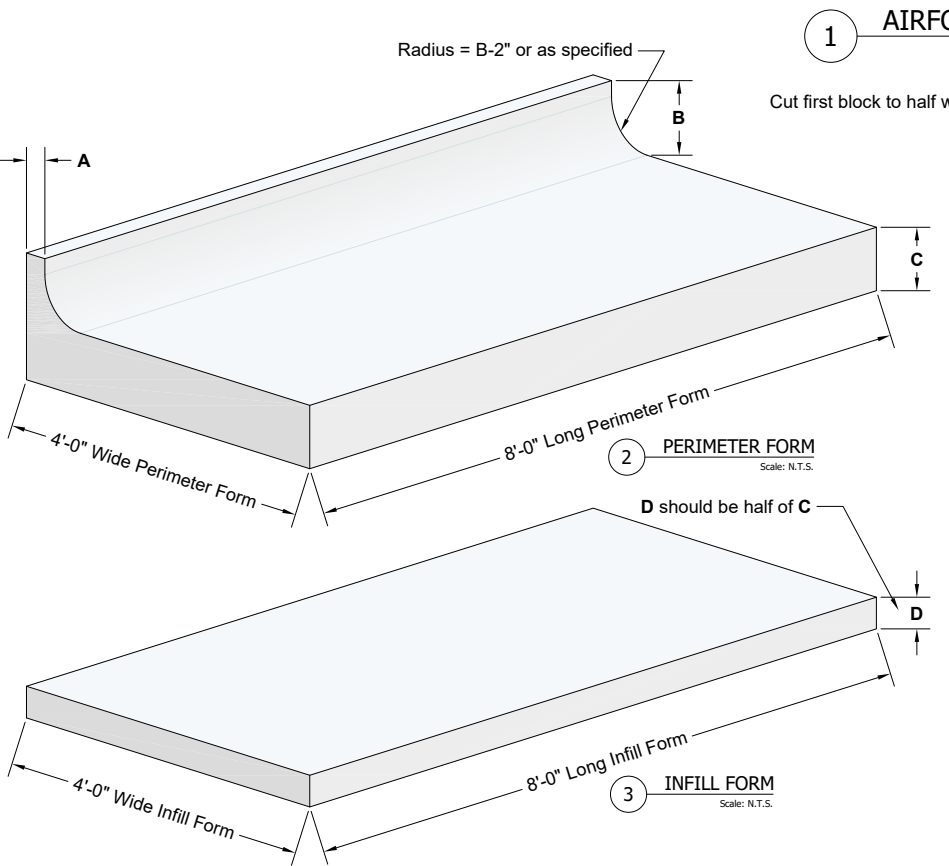
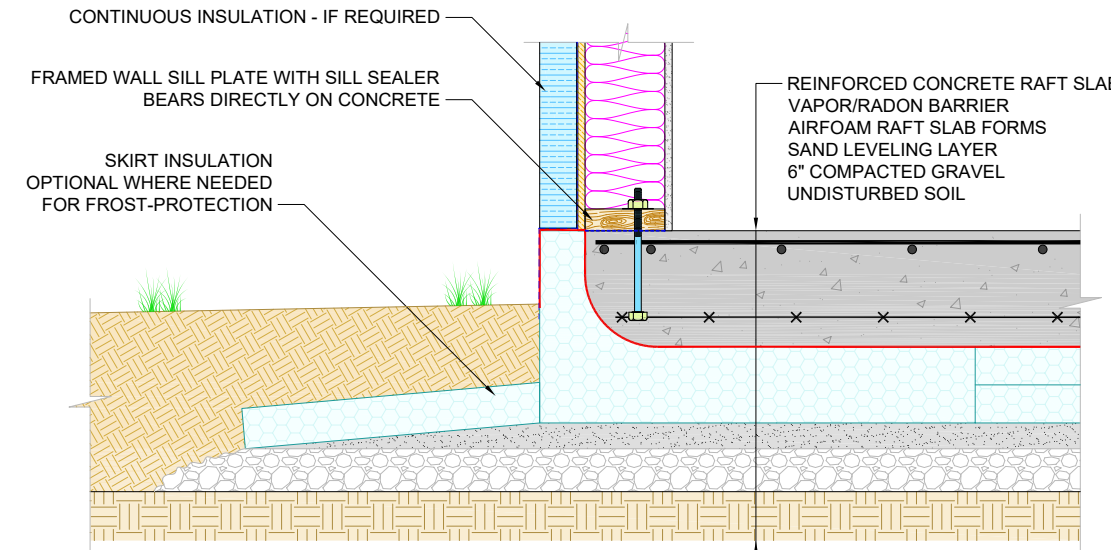
Property*	Units	Types						ASTM Test	
		G15	G19	G22	G24	G29	G39		G46
Compressive Resistance minimum @ 1% Strain	psi	3.6	5.8	7.3	8.4	10.9	15	18.6	D1621 Proc.A
	kPa	25	40	50	58	75	103	128	
Thermal Resistance Minimum @ 24°C [75°F] (when dry)									
R-Value/inch thickness	ft ² -hr ² -F/(BTU-in)	3.75	3.8	4.04	4.1	4.27	4.27	4.3	C518 or C177
Rsi / 25mm thickness	m ² -°C/(W-25mm)	0.65	0.66	0.7	0.71	0.74	0.74	0.75	
Water Vapor Permeance Maximum at 1" thickness	perms	5	3.5	3.5	3.3	2.3	2.3	2.3	E96
	ng/(Pa-s-m ²)	287	201	201	190	132	132	132	

Structural Raft Slab
Reinforced concrete raft slabs are structural elements and as such must be designed and stamped by the project's engineer of record. They disperse exterior/interior wall line loads, point loads and any other stresses across the entire slab, so the heavy rebar-mat is placed near the top of the slab.

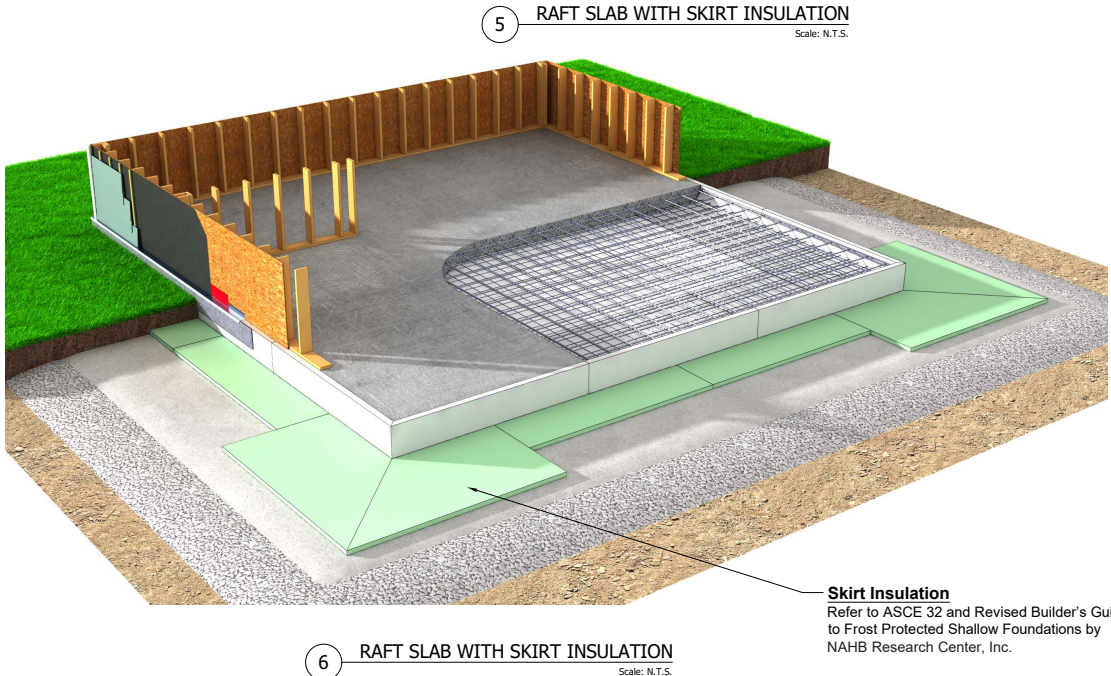
Raft Slab EPS Blocks (Perimeter & Infill)
Airfoam Raft Slab EPS Blocks are custom wire cut to suit site specifications. See table on right for different types with their respective compressive strengths.

Skirt Insulation
The details (5) and (6) below depict a variation based on ASCE 32 and the Revised Builder's Guide to Frost Protected Shallow Foundations published by NAHB Research Center, Inc. This insulation serves to further protect the building from frost heave by raising soil temperature and the frost depth around the building.

* The test methods used to determine the above material properties provide a means of comparing different rigid, cellular polystyrene geofoam products. They are intended for use in specifications, product evaluations and quality control, but they are not intended to predict end-use product performance.
For more information see: <https://www.airfoam.com/EPS-Geofoam-Void-Fill-Solutions.php>



AIRFOAM RAFT SLAB EPS BLOCKS - ORDER TABLE						
	A (in)	B (in)	C (in)	D (in)	Quantity	Type (see table on right)
Perimeter Blocks					Not Applicable.	
Infill Blocks	4'-0" Wide x 8'-0" Long					
Skirt Insulation 1	4'-0" Wide x 8'-0" Long					
Skirt Insulation 2	4'-0" Wide x 8'-0" Long					
Additional EPS	4'-0" Wide x 8'-0" Long					



No.	DATE	DESCRIPTION
01	2023-02-23	Revision 1

DATE: 2020-02-25	DRAWN BY: Z. PROSTRAN
SCALE: AS SHOWN	APPROVED BY:
SHEET SIZE: 11"x17"	APPROVED ON: YYYY-MM-DD
PROJECT NO: K00	SHEET: AR-RF-1