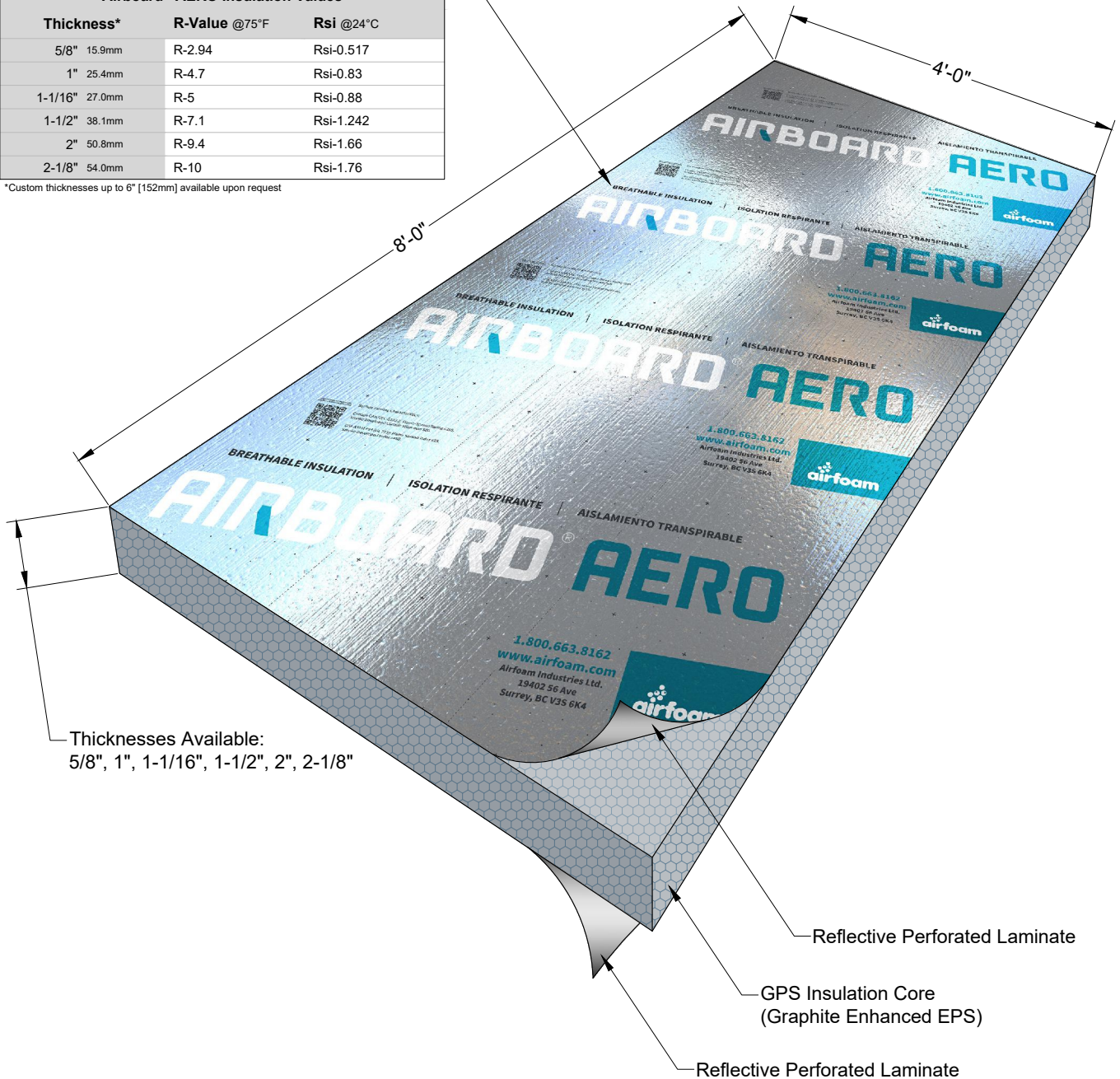


Airboard® AERO

Laminated GPS (Graphite Enhanced EPS) Insulation
Vapor-Permeable up to 2-1/8" [54mm] thickness

Airboard® AERO Insulation Values			
Thickness*		R-Value @75°F	Rsi @24°C
5/8"	15.9mm	R-2.94	Rsi-0.517
1"	25.4mm	R-4.7	Rsi-0.83
1-1/16"	27.0mm	R-5	Rsi-0.88
1-1/2"	38.1mm	R-7.1	Rsi-1.242
2"	50.8mm	R-9.4	Rsi-1.66
2-1/8"	54.0mm	R-10	Rsi-1.76

*Custom thicknesses up to 6" [152mm] available upon request



Thicknesses Available:
5/8", 1", 1-1/16", 1-1/2", 2", 2-1/8"

1 Airboard® AERO - Product Overview

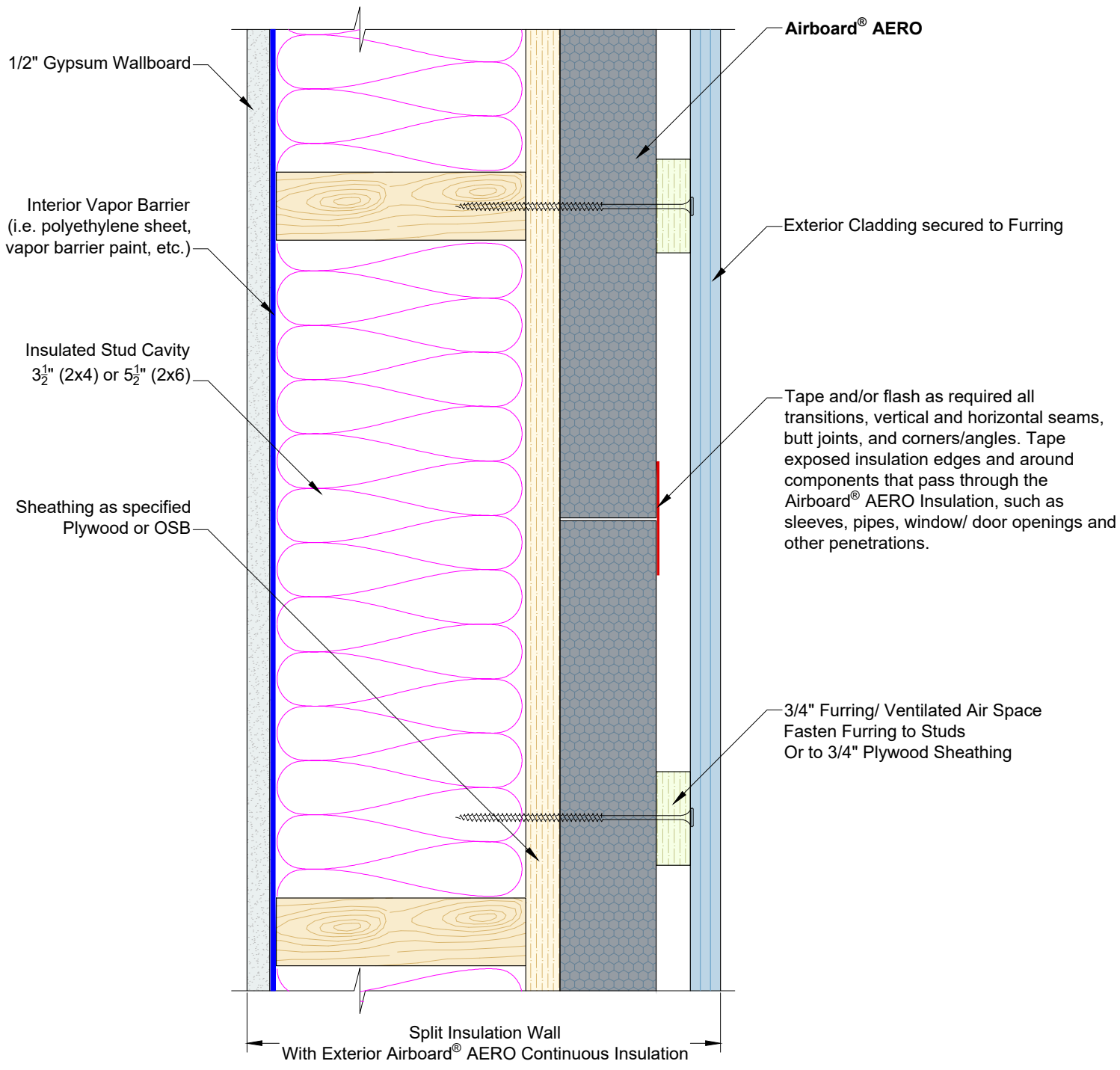
Scale: N.T.S.

airfoam
© Copyright 2024 Airfoam Industries Ltd.
DUE TO VARIANCES IN LOCAL CODES, CONSTRUCTION PRACTICES, AND REQUIREMENTS ALL DETAILS SHALL BE CONSTRUCTED IN ACCORDANCE WITH SUCH LOCAL CODES, CONSTRUCTION PRACTICES, AND REQUIREMENTS REGARDLESS OF DETAIL CONSTRUCTION SHOWN IN DRAWING. AIRFOAM INDUSTRIES LTD. RESERVES THE RIGHT TO CHANGE INFORMATION SHOWN WITHOUT NOTICE.

Airboard® AERO
Laminated, Vapor-Permeable, Graphite-Enhanced (GPS) Insulation

Product Overview

DATE ISSUED	2024-07-31	DESIGNED BY	ZP
DRAWING SIZE	8.5" x 11"	APPROVED BY	GK
DATE	SEE DRAWING	APPROVED DATE	2024-08-01
REVISIONS	01 02 03 04		
PROJECT No.	D-01	DRAWING No.	AE-01



1 Airboard® AERO - Wall Top View Detail
Scale: N.T.S.

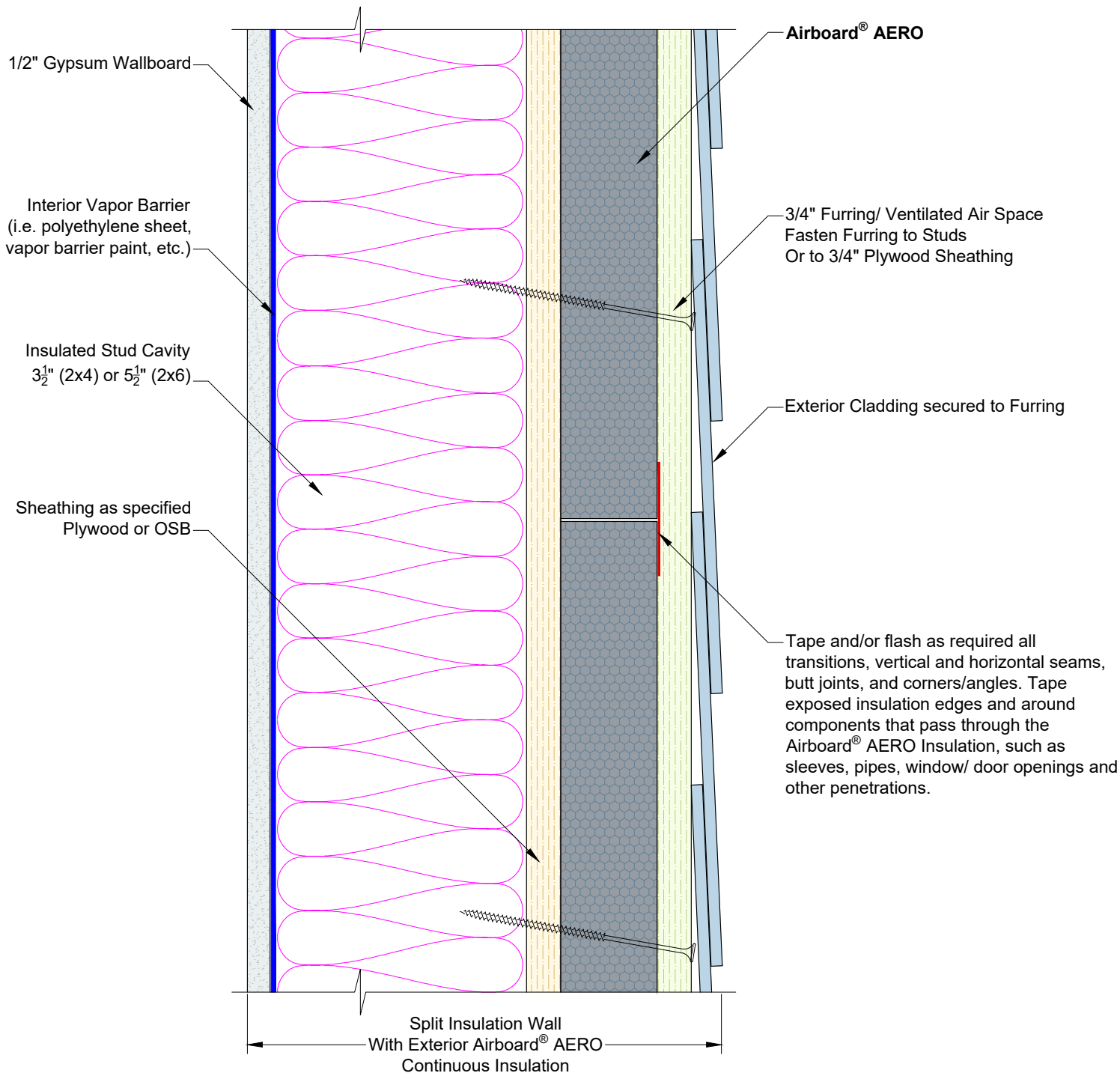
airfoam
© Copyright 2024 Airfoam Industries Ltd.
DUE TO VARIANCES IN LOCAL CODES, CONSTRUCTION PRACTICES, AND REQUIREMENTS ALL DETAILS SHALL BE CONSTRUCTED IN ACCORDANCE WITH SUCH LOCAL CODES, CONSTRUCTION PRACTICES, AND REQUIREMENTS REGARDLESS OF DETAIL CONSTRUCTION SHOWN IN DRAWING. AIRFOAM INDUSTRIES LTD. RESERVES THE RIGHT TO CHANGE INFORMATION SHOWN WITHOUT NOTICE.

Airfoam Industries Ltd.
19402 56 Ave, Surrey, BC V3S 6K4
Phone: (604) 534-8626
Fax: (604) 534-1212
www.airfoam.com

Airboard® AERO
Laminated, Vapor-Permeable, Graphite-Enhanced (GPS) Insulation

Wall Top View Detail

DATE ISSUED	2024-07-31	DESIGNED BY	ZP
SHEET SIZE	8.5" x 11"	APPROVED BY	GK
SCALE	SEE DRAWING	APPROVED DATE	2024-08-01
REVISIONS	01 02 03 04		
PROJECT No.	D-02		
			AE-02



1 Airboard® AERO - Wall Side View Detail
Scale: N.T.S.

Airfoam Industries Ltd.
 19402 56 Ave, Surrey, BC V3S 6K4
 Phone: (604) 534-8626
 Fax: (604) 534-1212
 www.airfoam.com

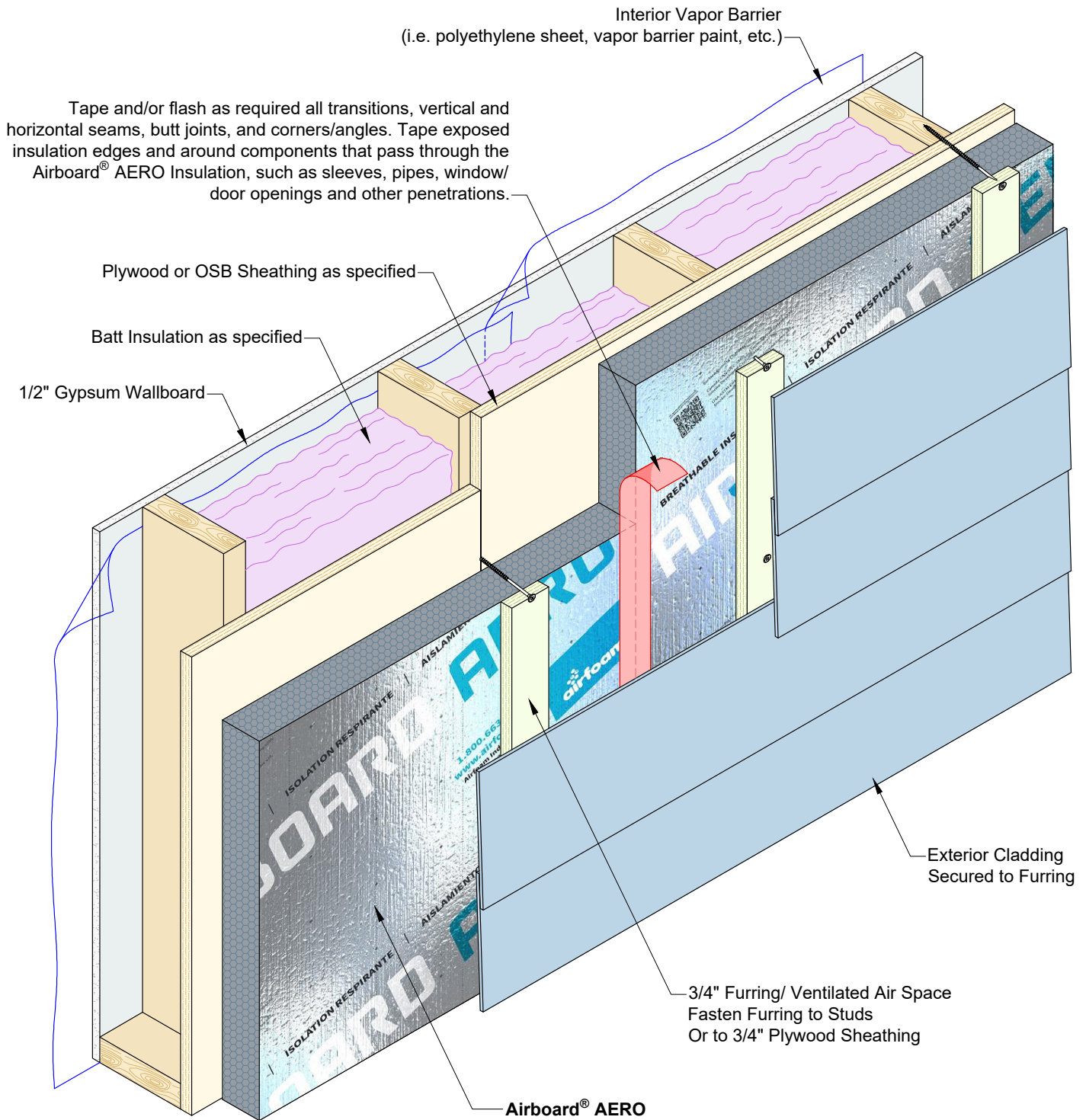
airfoam

© Copyright 2024 Airfoam Industries Ltd.
DUE TO VARIANCES IN LOCAL CODES, CONSTRUCTION PRACTICES, AND REQUIREMENTS ALL DETAILS SHALL BE CONSTRUCTED IN ACCORDANCE WITH SUCH LOCAL CODES, CONSTRUCTION PRACTICES, AND REQUIREMENTS REGARDLESS OF DETAIL CONSTRUCTION SHOWN IN DRAWING. AIRFOAM INDUSTRIES LTD. RESERVES THE RIGHT TO CHANGE INFORMATION SHOWN WITHOUT NOTICE.

Airboard® AERO
 Laminated, Vapor-Permeable, Graphite-Enhanced (GPS) Insulation

Wall Side View Detail

DATE ISSUED	2024-07-31	DRAWN BY	ZP
SHEET SIZE	8.5" x 11"	APPROVED BY	GK
TITLE	SEE DRAWING	APPROVED DATE	2024-08-01
REVISIONS	01 02 03 04		
PROJECT No.	D-03		
			AE-03



1 Airboard® AERO - Isometric View
Scale: N.T.S.



Airfoam Industries Ltd.

19402 56 Ave, Surrey, BC V3S 6K4
Phone: (604) 534-8626
Fax: (604) 534-1212
www.airfoam.com

© Copyright 2024 Airfoam Industries Ltd.

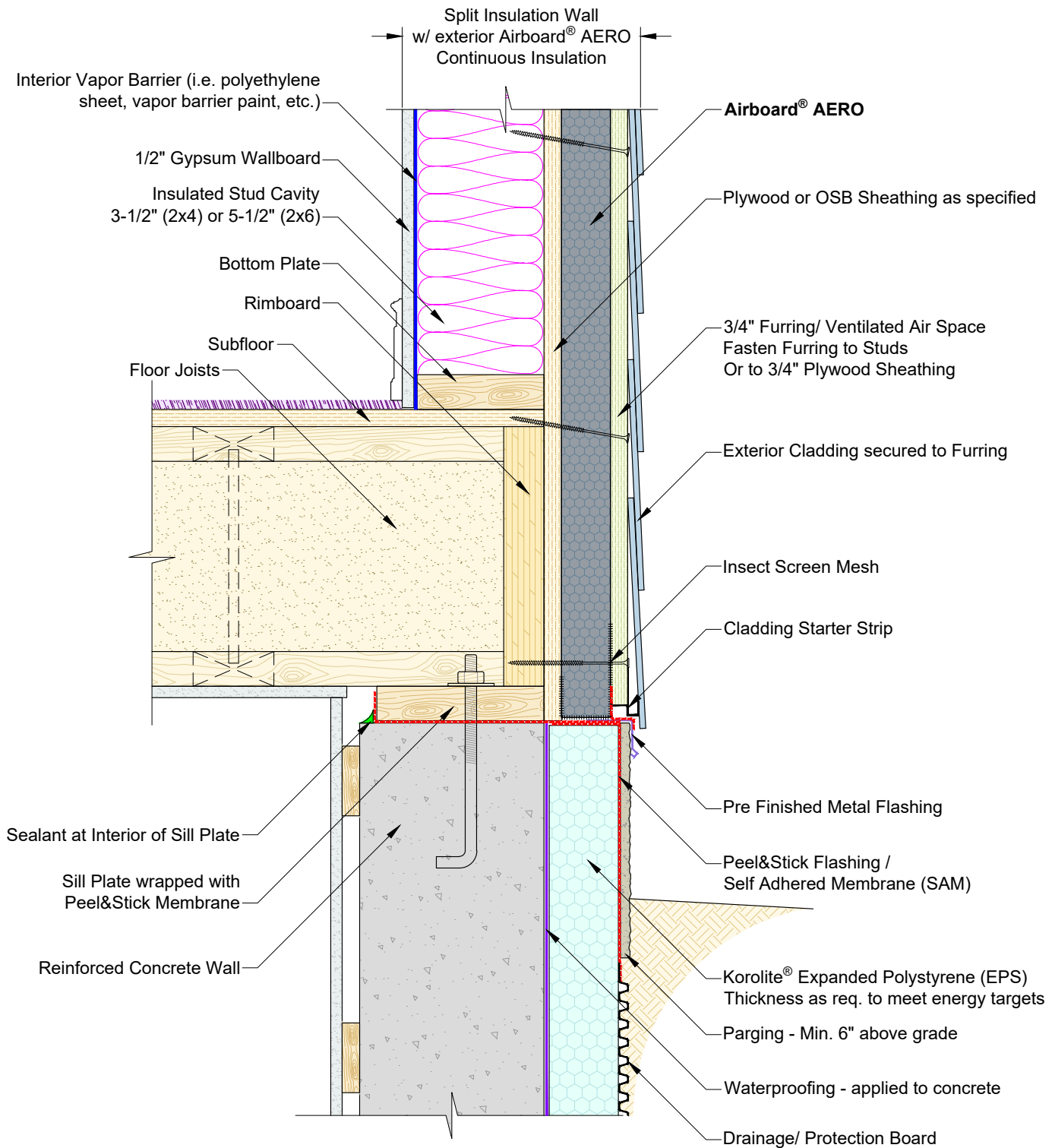
DUE TO VARIANCES IN LOCAL CODES, CONSTRUCTION PRACTICES, AND REQUIREMENTS ALL DETAILS SHALL BE CONSTRUCTED IN ACCORDANCE WITH SUCH LOCAL CODES, CONSTRUCTION PRACTICES, AND REQUIREMENTS REGARDLESS OF DETAIL CONSTRUCTION SHOWN IN DRAWING. AIRFOAM INDUSTRIES LTD. RESERVES THE RIGHT TO CHANGE INFORMATION SHOWN WITHOUT NOTICE.

Airboard® AERO

Laminated, Vapor-Permeable, Graphite-Enhanced (GPS) Insulation

Isometric View

DATE ISSUED	2024-07-31	DESIGNED BY	ZP
SHEET SIZE	8.5" x 11"	APPROVED BY	GK
SCALE	SEE DRAWING	APPROVED DATE	2024-08-01
REVISIONS	01 02 03 04		
PROJECT No.	D-04		
			AE-04



1 Airboard® AERO - Transition at Grade
Scale: N.T.S.

Airfoam Industries Ltd.
 19402 56 Ave, Surrey, BC V3S 6K4
 Phone: (604) 534-8626
 Fax: (604) 534-1212
 www.airfoam.com

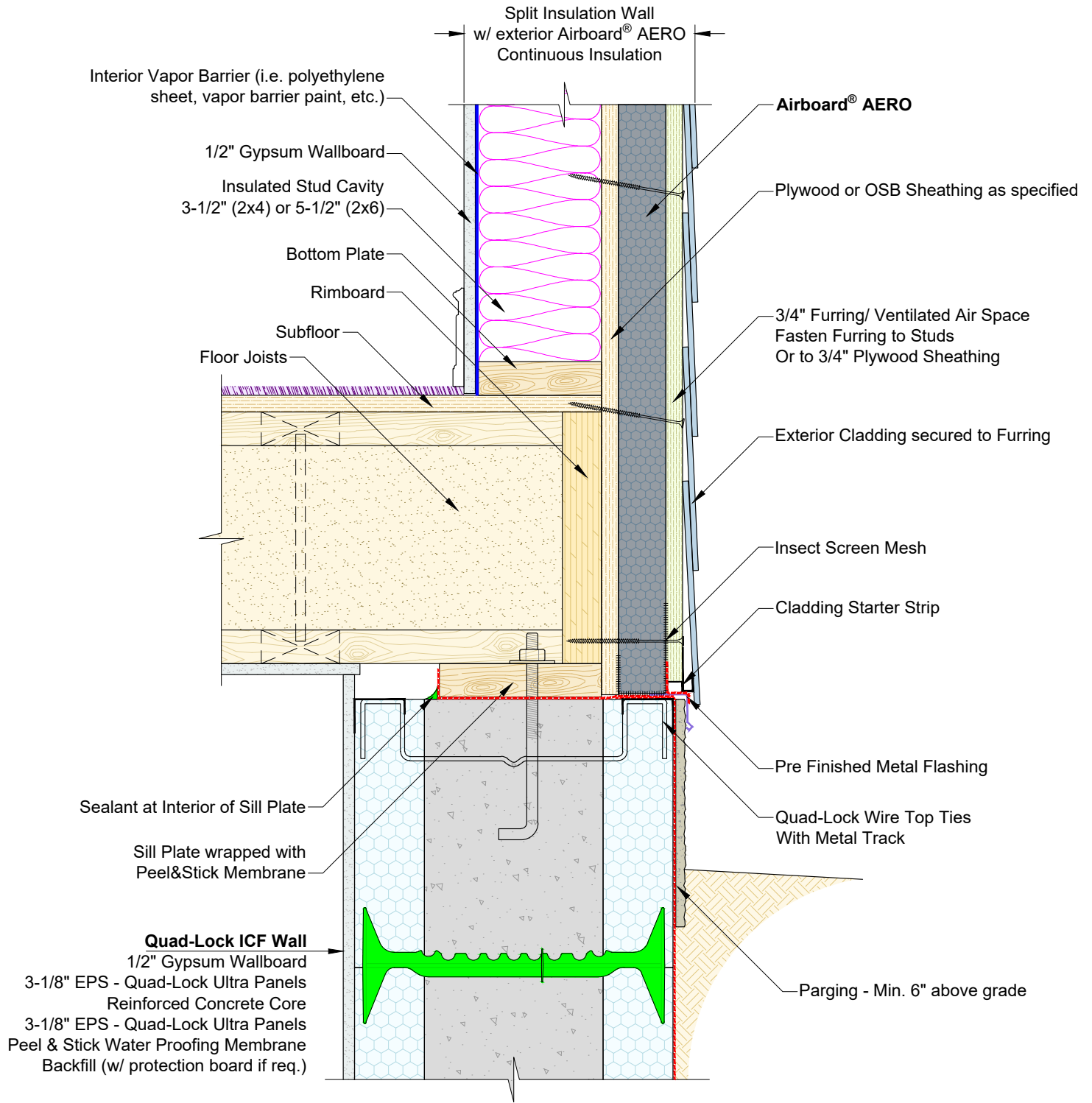
airfoam

© Copyright 2024 Airfoam Industries Ltd.
 DUE TO VARIANCES IN LOCAL CODES, CONSTRUCTION PRACTICES, AND REQUIREMENTS ALL DETAILS SHALL BE CONSTRUCTED IN ACCORDANCE WITH SUCH LOCAL CODES, CONSTRUCTION PRACTICES, AND REQUIREMENTS REGARDLESS OF DETAIL CONSTRUCTION SHOWN IN DRAWING. AIRFOAM INDUSTRIES LTD. RESERVES THE RIGHT TO CHANGE INFORMATION SHOWN WITHOUT NOTICE.

Airboard® AERO
 Laminated, Vapor-Permeable, Graphite-Enhanced (GPS) Insulation

Transition at Grade

DATE REVISED	2024-07-31	DESIGNED BY	ZP
DRAWING SIZE	8.5" x 11"	APPROVED BY	GK
SCALE	SEE DRAWING	APPROVED DATE	2024-08-01
REVISIONS	01 02 03 04		
PROJECT No.	D-05		
			AE-05



1 Airboard® AERO - Transition at Grade - ICF Basement Wall
 Scale: N.T.S.

Airfoam Industries Ltd.
 19402 56 Ave, Surrey, BC V3S 6K4
 Phone: (604) 534-8626
 Fax: (604) 534-1212
 www.airfoam.com

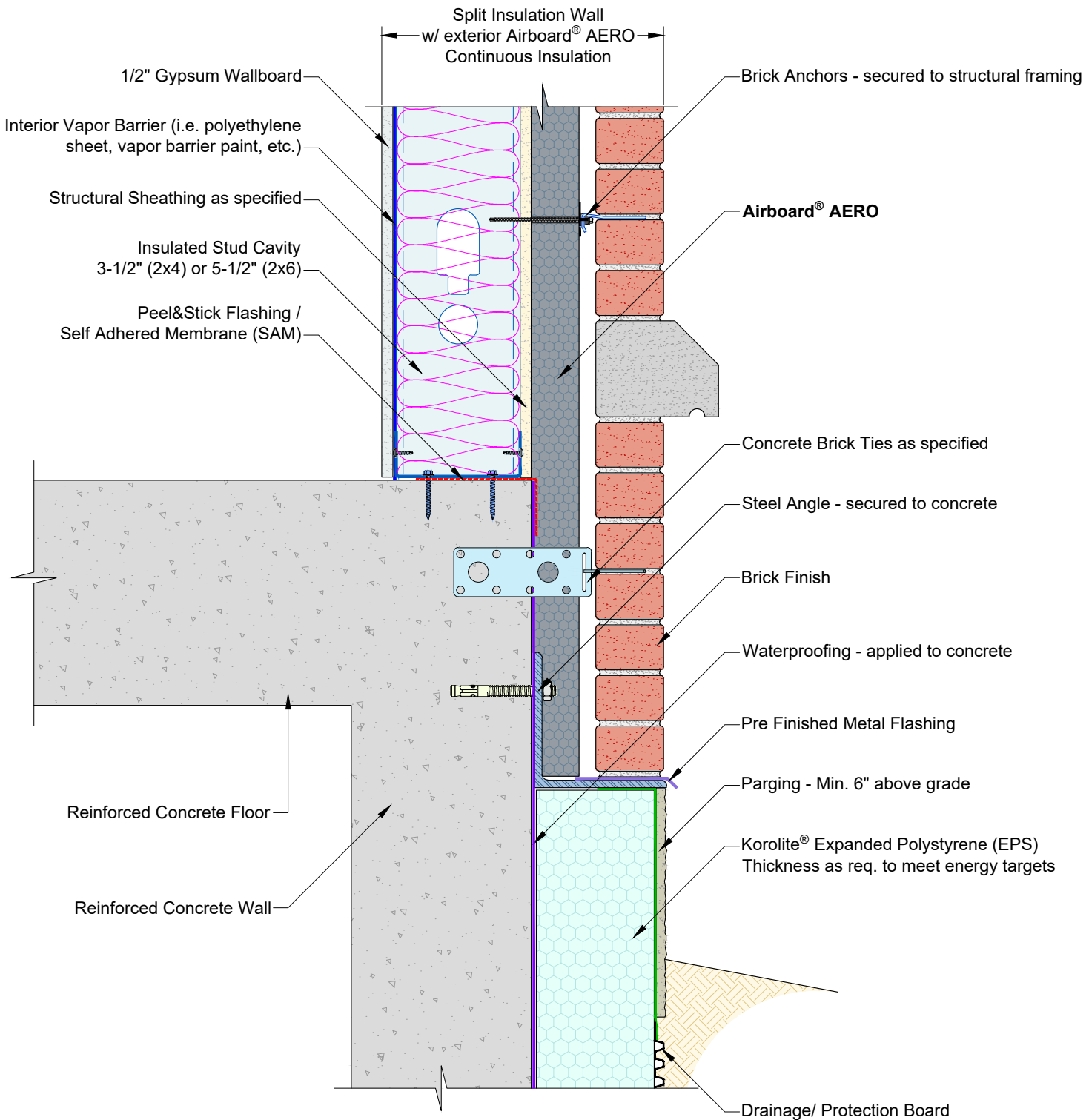
airfoam

© Copyright 2024 Airfoam Industries Ltd.
 DUE TO VARIANCES IN LOCAL CODES, CONSTRUCTION PRACTICES, AND REQUIREMENTS ALL DETAILS SHALL BE CONSTRUCTED IN ACCORDANCE WITH SUCH LOCAL CODES, CONSTRUCTION PRACTICES, AND REQUIREMENTS REGARDLESS OF DETAIL CONSTRUCTION SHOWN IN DRAWING. AIRFOAM INDUSTRIES LTD. RESERVES THE RIGHT TO CHANGE INFORMATION SHOWN WITHOUT NOTICE.

Airboard® AERO
 Laminated, Vapor-Permeable, Graphite-Enhanced (GPS) Insulation

Transition at Grade - ICF Basement Wall

DATE ISSUED	2024-07-31	DESIGNED BY	ZP
SHEET SIZE	8.5" x 11"	APPROVED BY	GK
SCALE	SEE DRAWING	ISSUE DATE	2024-08-01
REVISIONS	01 02 03 04		
PROJECT No.	D-06		
			AE-06



1 Airboard® AERO - Transition at Grade w/ Brick Finish
Scale: N.T.S.

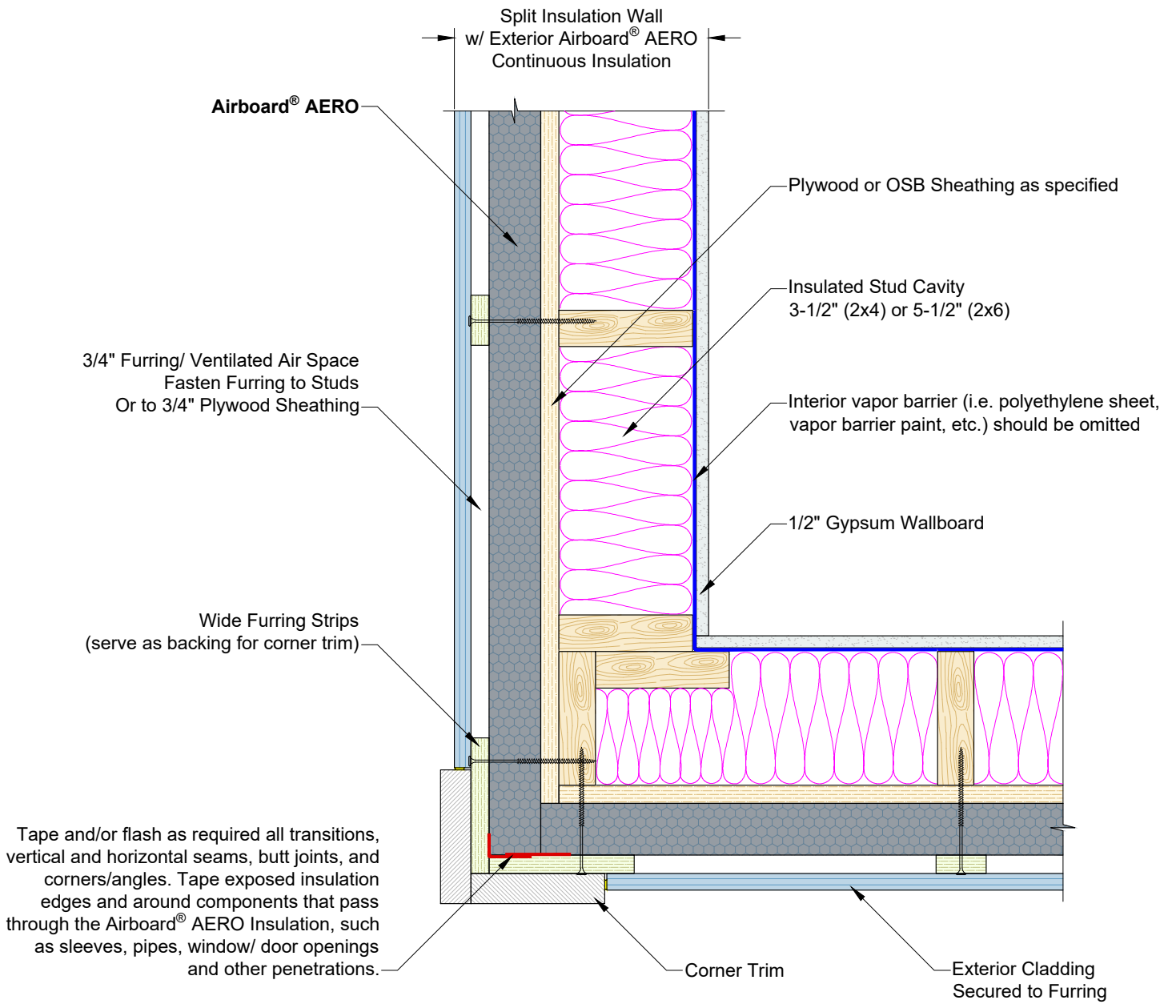
Airfoam Industries Ltd.
 19402 56 Ave, Surrey, BC V3S 6K4
 Phone: (604) 534-8626
 Fax: (604) 534-1212
 www.airfoam.com

© Copyright 2024 Airfoam Industries Ltd.
 DUE TO VARIANCES IN LOCAL CODES, CONSTRUCTION PRACTICES, AND REQUIREMENTS ALL DETAILS SHALL BE CONSTRUCTED IN ACCORDANCE WITH SUCH LOCAL CODES, CONSTRUCTION PRACTICES, AND REQUIREMENTS REGARDLESS OF DETAIL CONSTRUCTION SHOWN IN DRAWING. AIRFOAM INDUSTRIES LTD. RESERVES THE RIGHT TO CHANGE INFORMATION SHOWN WITHOUT NOTICE.

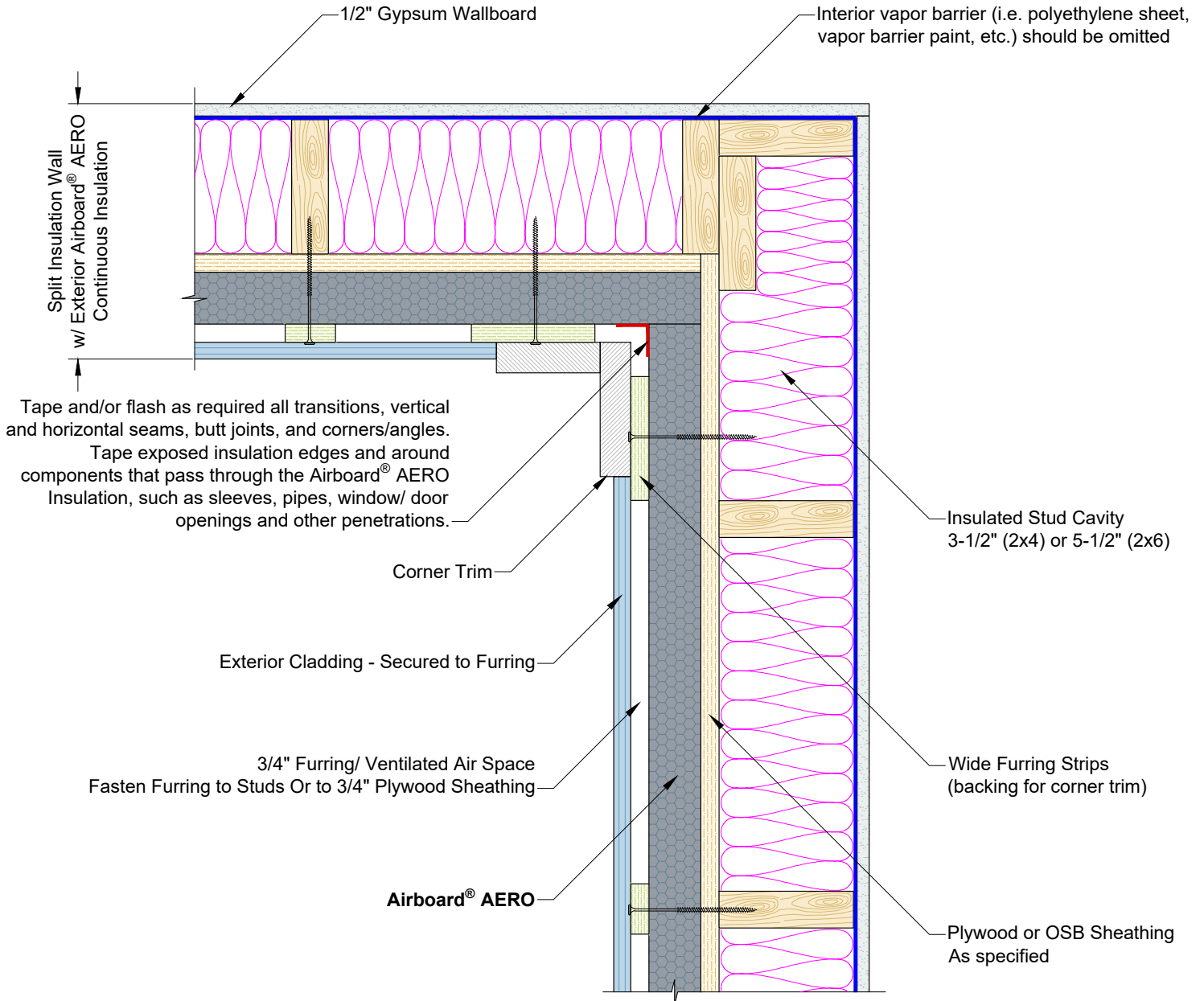
Airboard® AERO
 Laminated, Vapor-Permeable, Graphite-Enhanced (GPS) Insulation

Transition at Grade - Brick Finish

DATE ISSUED	2024-07-31	DESIGNED BY	ZP
SHEET SIZE	8.5" x 11"	APPROVED BY	GK
SCALE	SEE DRAWING	APPROVED DATE	2024-08-01
REVISIONS	01 02 03 04		
PROJECT No.	D-07		
			AE-07



1 Airboard® AERO - Outside Corner Detail
Scale: N.T.S.



1

Airboard® AERO - Inside Corner Detail

Scale: N.T.S.



Airfoam Industries Ltd.

19402 56 Ave, Surrey, BC V3S 6K4
Phone: (604) 534-8626
Fax: (604) 534-1212
www.airfoam.com

© Copyright 2024 Airfoam Industries Ltd.

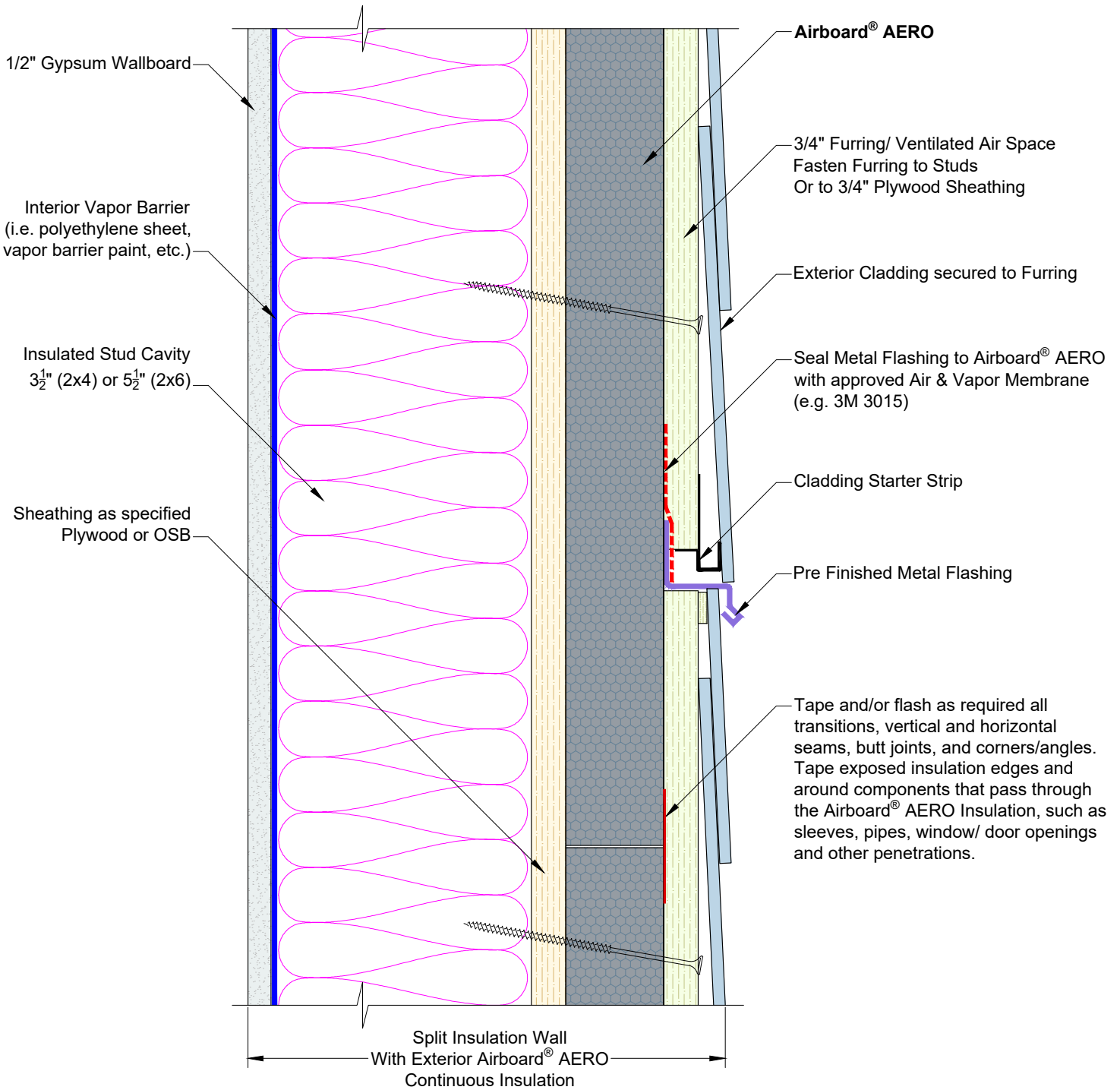
DUE TO VARIANCES IN LOCAL CODES, CONSTRUCTION PRACTICES, AND REQUIREMENTS ALL DETAILS SHALL BE CONSTRUCTED IN ACCORDANCE WITH SUCH LOCAL CODES, CONSTRUCTION PRACTICES, AND REQUIREMENTS REGARDLESS OF DETAIL CONSTRUCTION SHOWN IN DRAWING. AIRFOAM INDUSTRIES LTD. RESERVES THE RIGHT TO CHANGE INFORMATION SHOWN WITHOUT NOTICE.

Airboard® AERO

Laminated, Vapor-Permeable, Graphite-Enhanced (GPS) Insulation

Inside Corner Detail

DATE ISSUED	2024-07-31	DESIGNED BY	ZP
DRAWN BY	8.5" x 11"	APPROVED BY	GK
SCALE	SEE DRAWING	APPROVED DATE	2024-08-01
REVISIONS	01 02 03 04		
PROJECT No.	D-09		
			AE-09



1 Airboard® AERO - Wall Flashing Detail
Scale: N.T.S.



Airfoam Industries Ltd.

19402 56 Ave, Surrey, BC V3S 6K4
Phone: (604) 534-8626
Fax: (604) 534-1212
www.airfoam.com

© Copyright 2024 Airfoam Industries Ltd.

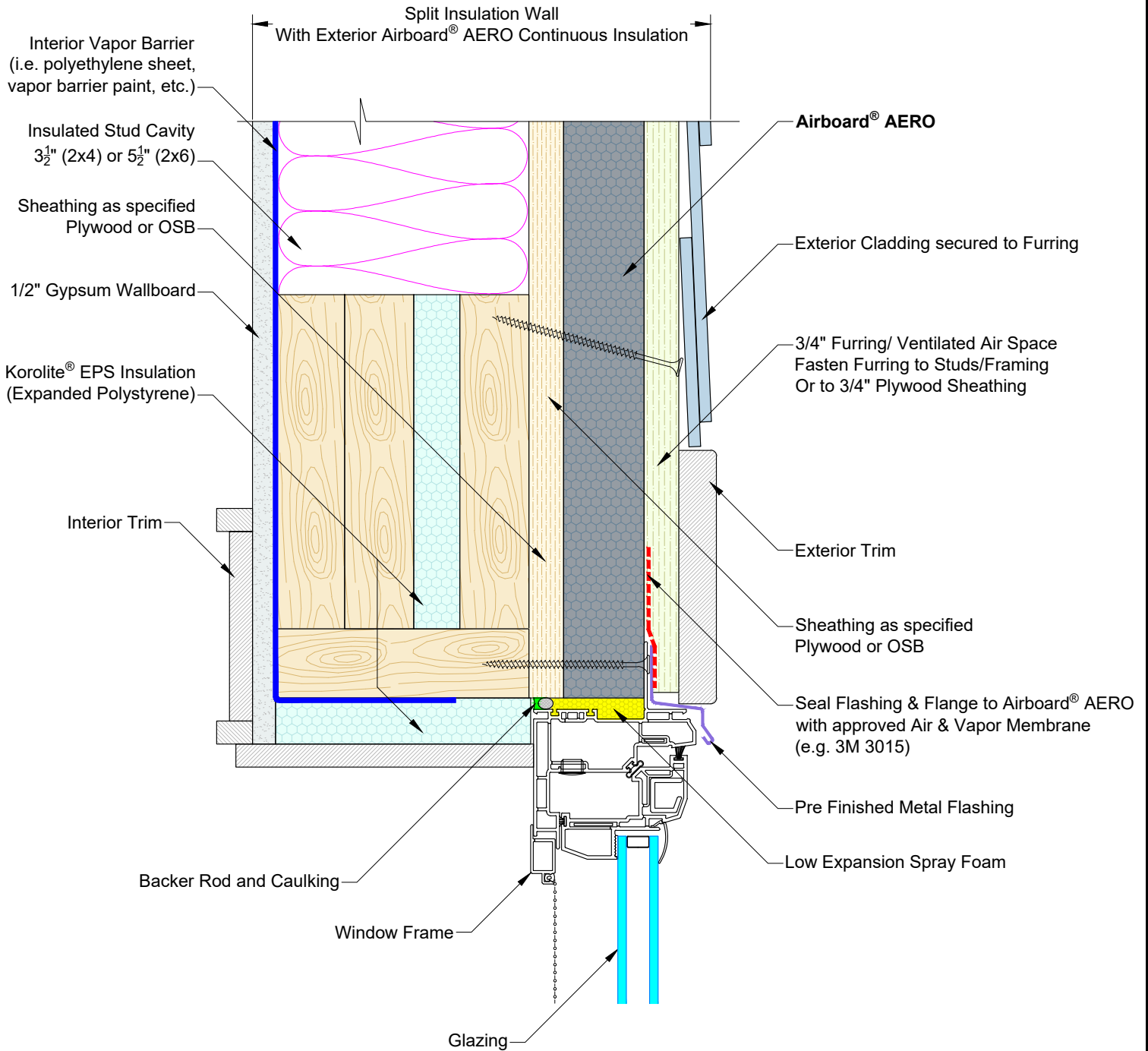
DUE TO VARIANCES IN LOCAL CODES, CONSTRUCTION PRACTICES, AND REQUIREMENTS ALL DETAILS SHALL BE CONSTRUCTED IN ACCORDANCE WITH SUCH LOCAL CODES, CONSTRUCTION PRACTICES, AND REQUIREMENTS REGARDLESS OF DETAIL CONSTRUCTION SHOWN IN DRAWING. AIRFOAM INDUSTRIES LTD. RESERVES THE RIGHT TO CHANGE INFORMATION SHOWN WITHOUT NOTICE.

Airboard® AERO

Laminated, Vapor-Permeable, Graphite-Enhanced (GPS) Insulation

Wall Flashing Detail

DATE ISSUED	2024-07-31	DRAWN BY	ZP
SHEET SIZE	8.5" x 11"	APPROVED BY	GK
SCALE	SEE DRAWING	APPROVED DATE	2024-08-01
REVISIONS	01 02 03 04		
PROJECT No.	D-10		
			AE-10



1 Airboard® AERO - Head Detail - Flanged Window

Scale: N.T.S.



Airfoam Industries Ltd.

19402 56 Ave, Surrey, BC V3S 6K4

Phone: (604) 534-8626

Fax: (604) 534-1212

www.airfoam.com

© Copyright 2024 Airfoam Industries Ltd.

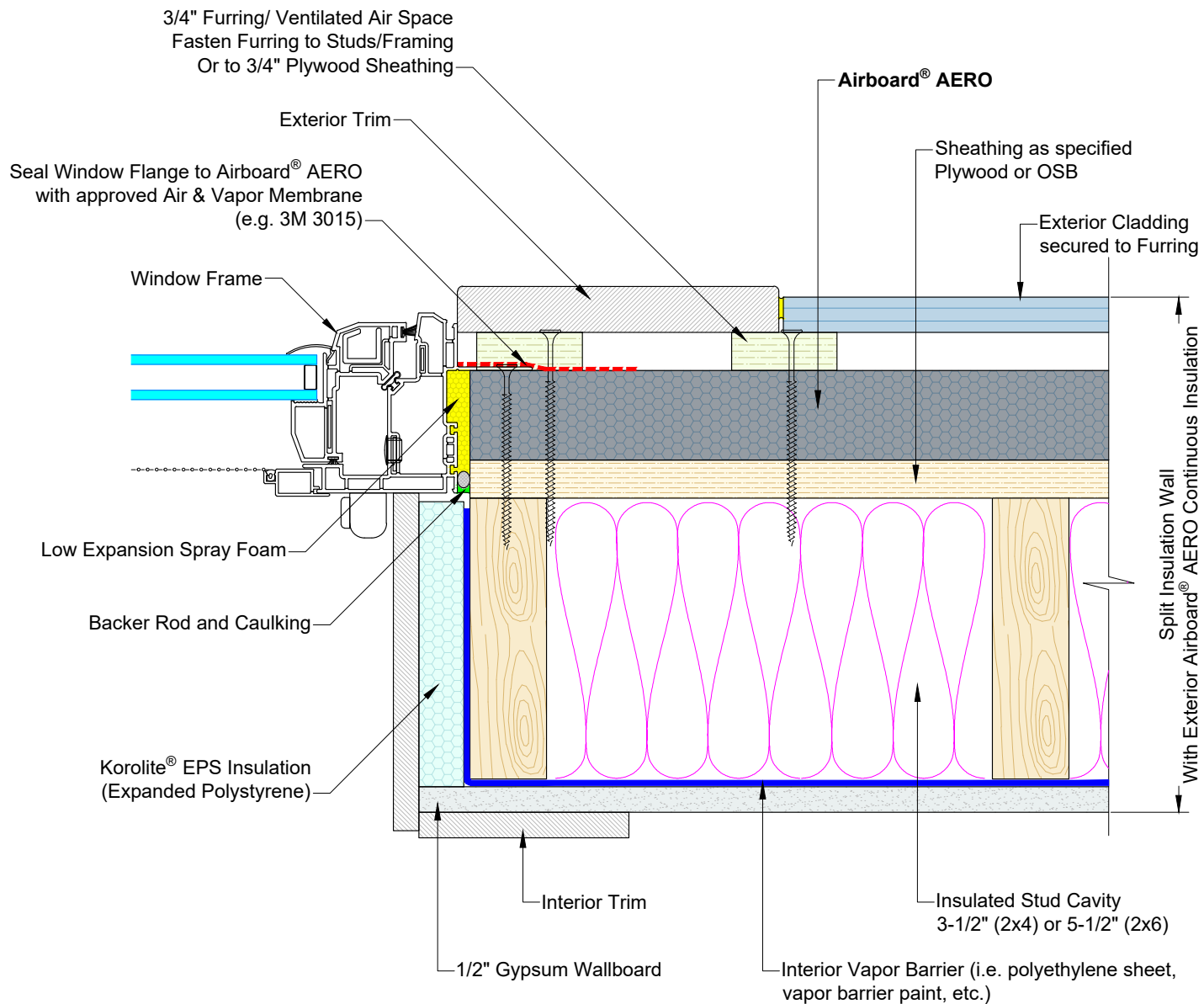
DUE TO VARIANCES IN LOCAL CODES, CONSTRUCTION PRACTICES, AND REQUIREMENTS ALL DETAILS SHALL BE CONSTRUCTED IN ACCORDANCE WITH SUCH LOCAL CODES, CONSTRUCTION PRACTICES, AND REQUIREMENTS REGARDLESS OF DETAIL CONSTRUCTION SHOWN IN DRAWING. AIRFOAM INDUSTRIES LTD. RESERVES THE RIGHT TO CHANGE INFORMATION SHOWN WITHOUT NOTICE.

Airboard® AERO

Laminated, Vapor-Permeable, Graphite-Enhanced (GPS) Insulation

Head Detail - Flanged Window

DATE ISSUED	2024-07-31	DESIGNED BY	ZP
DRAWN BY	8.5" x 11"	APPROVED BY	GK
SCALE	SEE DRAWING	APPROVED DATE	2024-08-01
REVISIONS	01		
	02		
	03		
	04		
PROJECT No.	D-11	PROJECT NAME	AE-11



1 Airboard® AERO - Jamb Detail - Flanged Window
Scale: N.T.S.

Airfoam Industries Ltd.
19402 56 Ave, Surrey, BC V3S 6K4
Phone: (604) 534-8626
Fax: (604) 534-1212
www.airfoam.com

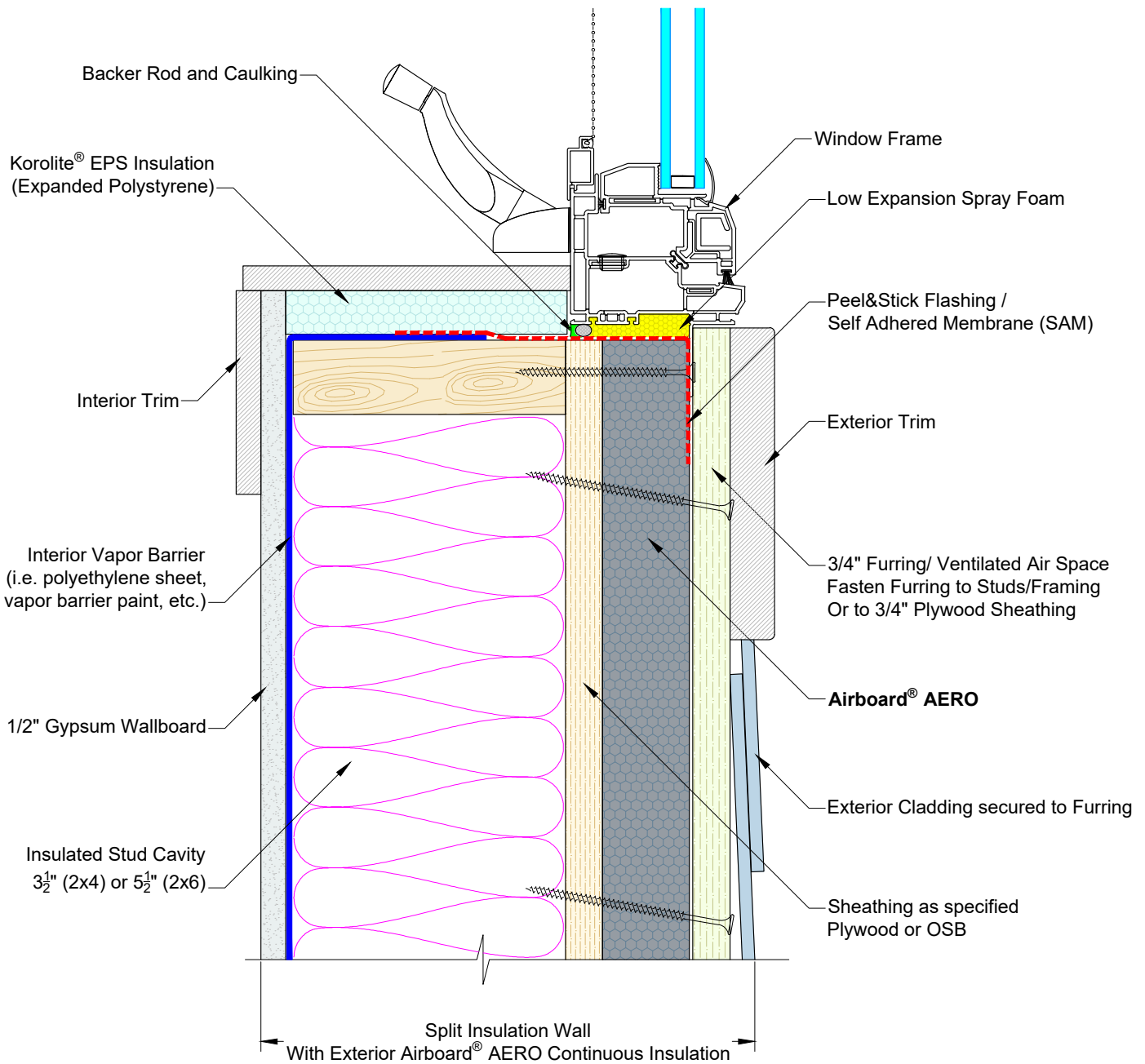
airfoam

© Copyright 2024 Airfoam Industries Ltd.
DUE TO VARIANCES IN LOCAL CODES, CONSTRUCTION PRACTICES, AND REQUIREMENTS ALL DETAILS SHALL BE CONSTRUCTED IN ACCORDANCE WITH SUCH LOCAL CODES, CONSTRUCTION PRACTICES, AND REQUIREMENTS REGARDLESS OF DETAIL CONSTRUCTION SHOWN IN DRAWING. AIRFOAM INDUSTRIES LTD. RESERVES THE RIGHT TO CHANGE INFORMATION SHOWN WITHOUT NOTICE.

Airboard® AERO
Laminated, Vapor-Permeable, Graphite-Enhanced (GPS) Insulation

Jamb Detail - Flanged Window

DATE ISSUED	2024-07-31	DESIGNED BY	ZP
DRAWN BY	8.5" x 11"	APPROVED BY	GK
CHECKED BY	SEE DRAWING	APPROVED DATE	2024-08-01
REVISIONS	01 02 03 04		
PROJECT NO.	D-12		
			AE-12



1 Airboard® AERO - Sill Detail - Flanged Window
Scale: N.T.S.



Airfoam Industries Ltd.

19402 56 Ave, Surrey, BC V3S 6K4
Phone: (604) 534-8626
Fax: (604) 534-1212
www.airfoam.com

© Copyright 2024 Airfoam Industries Ltd.

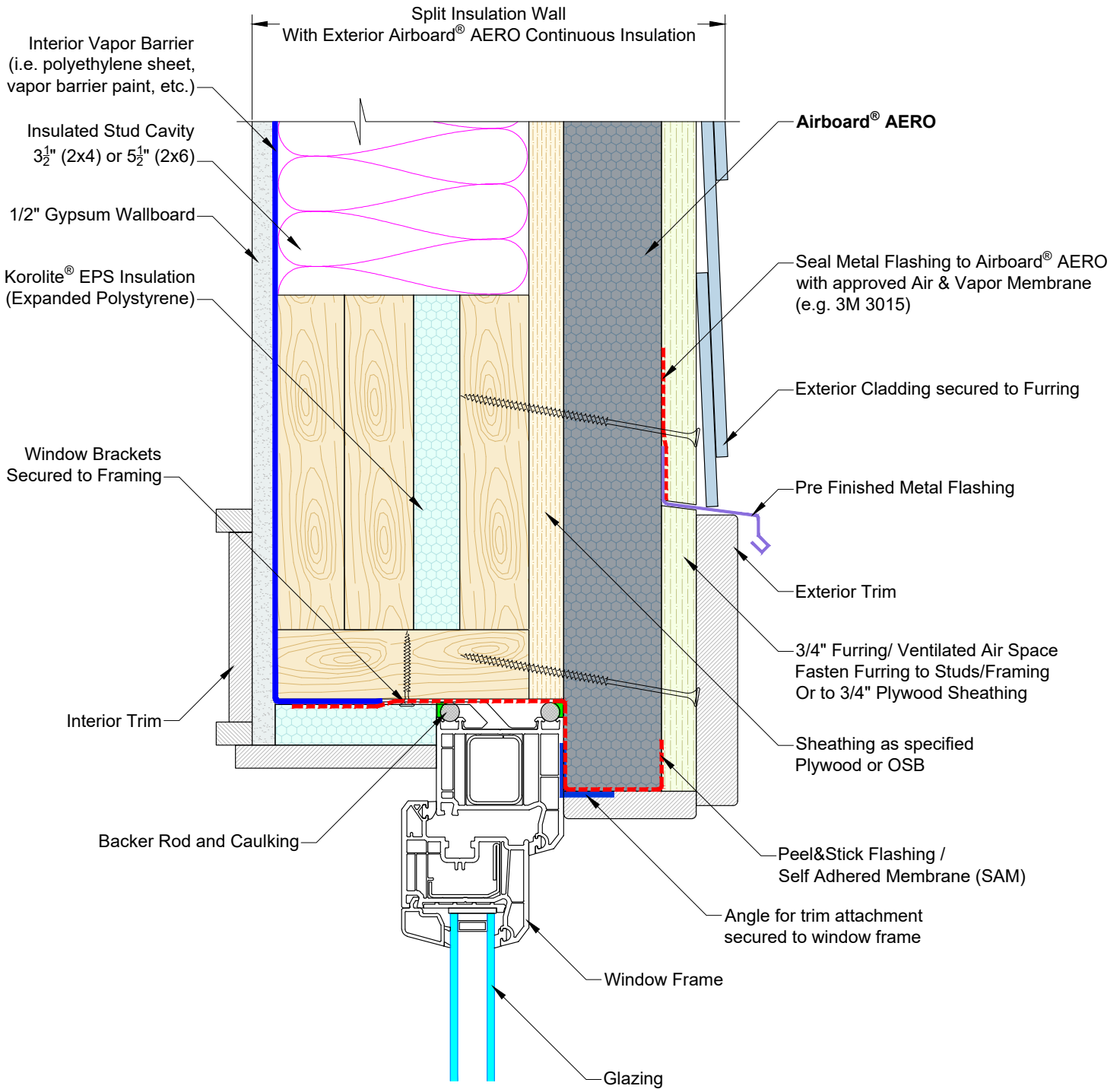
DUE TO VARIANCES IN LOCAL CODES, CONSTRUCTION PRACTICES, AND REQUIREMENTS ALL DETAILS SHALL BE CONSTRUCTED IN ACCORDANCE WITH SUCH LOCAL CODES, CONSTRUCTION PRACTICES, AND REQUIREMENTS REGARDLESS OF DETAIL CONSTRUCTION SHOWN IN DRAWING. AIRFOAM INDUSTRIES LTD. RESERVES THE RIGHT TO CHANGE INFORMATION SHOWN WITHOUT NOTICE.

Airboard® AERO

Laminated, Vapor-Permeable, Graphite-Enhanced (GPS) Insulation

Sill Detail - Flanged Window

DATE ISSUED	2024-07-31	DESIGNED BY	ZP
DRAWN BY	8.5" x 11"	APPROVED BY	GK
SCALE	SEE DRAWING	APPROVED DATE	2024-08-01
REVISIONS	01 02 03 04		
PROJECT No.	D-13		
			AE-13



1 Airboard® AERO - Head Detail - Boxed Window
Scale: N.T.S.



Airfoam Industries Ltd.

19402 56 Ave, Surrey, BC V3S 6K4
Phone: (604) 534-8626
Fax: (604) 534-1212
www.airfoam.com

© Copyright 2024 Airfoam Industries Ltd.

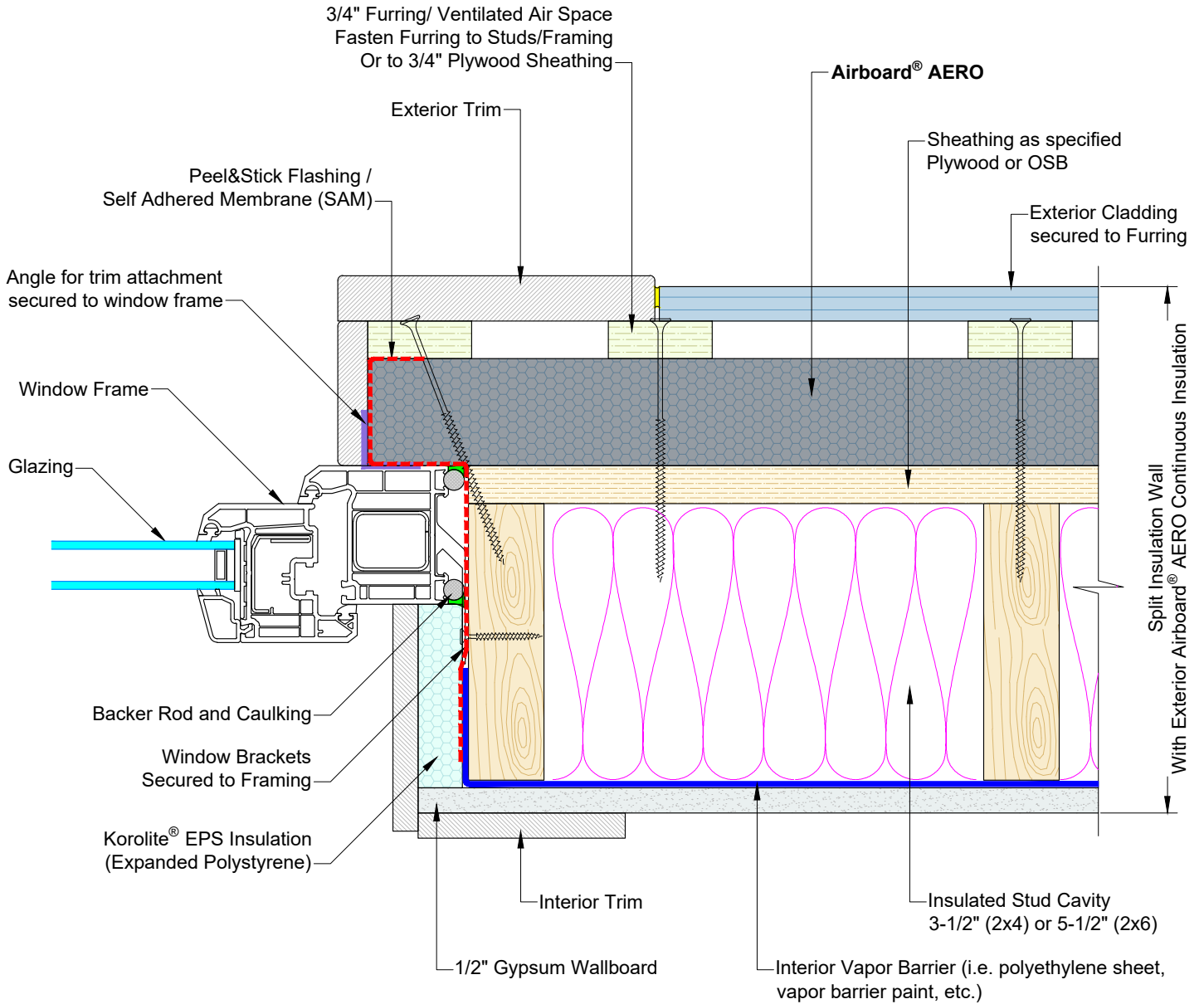
DUE TO VARIANCES IN LOCAL CODES, CONSTRUCTION PRACTICES, AND REQUIREMENTS ALL DETAILS SHALL BE CONSTRUCTED IN ACCORDANCE WITH SUCH LOCAL CODES, CONSTRUCTION PRACTICES, AND REQUIREMENTS REGARDLESS OF DETAIL CONSTRUCTION SHOWN IN DRAWING. AIRFOAM INDUSTRIES LTD. RESERVES THE RIGHT TO CHANGE INFORMATION SHOWN WITHOUT NOTICE.

Airboard® AERO

Laminated, Vapor-Permeable, Graphite-Enhanced (GPS) Insulation

Head Detail - Boxed Window

DATE ISSUED	2024-07-31	DESIGNED BY	ZP
DRAWN BY	8.5" x 11"	APPROVED BY	GK
CHECK	SEE DRAWING	APPROVED DATE	2024-08-01
REVISIONS	01 02 03 04		
PROJECT No.	D-11		
			AE-14



1 Airboard® AERO - Jamb Detail - Boxed Window
Scale: N.T.S.



Airfoam Industries Ltd.

19402 56 Ave, Surrey, BC V3S 6K4
Phone: (604) 534-8626
Fax: (604) 534-1212
www.airfoam.com

© Copyright 2024 Airfoam Industries Ltd.

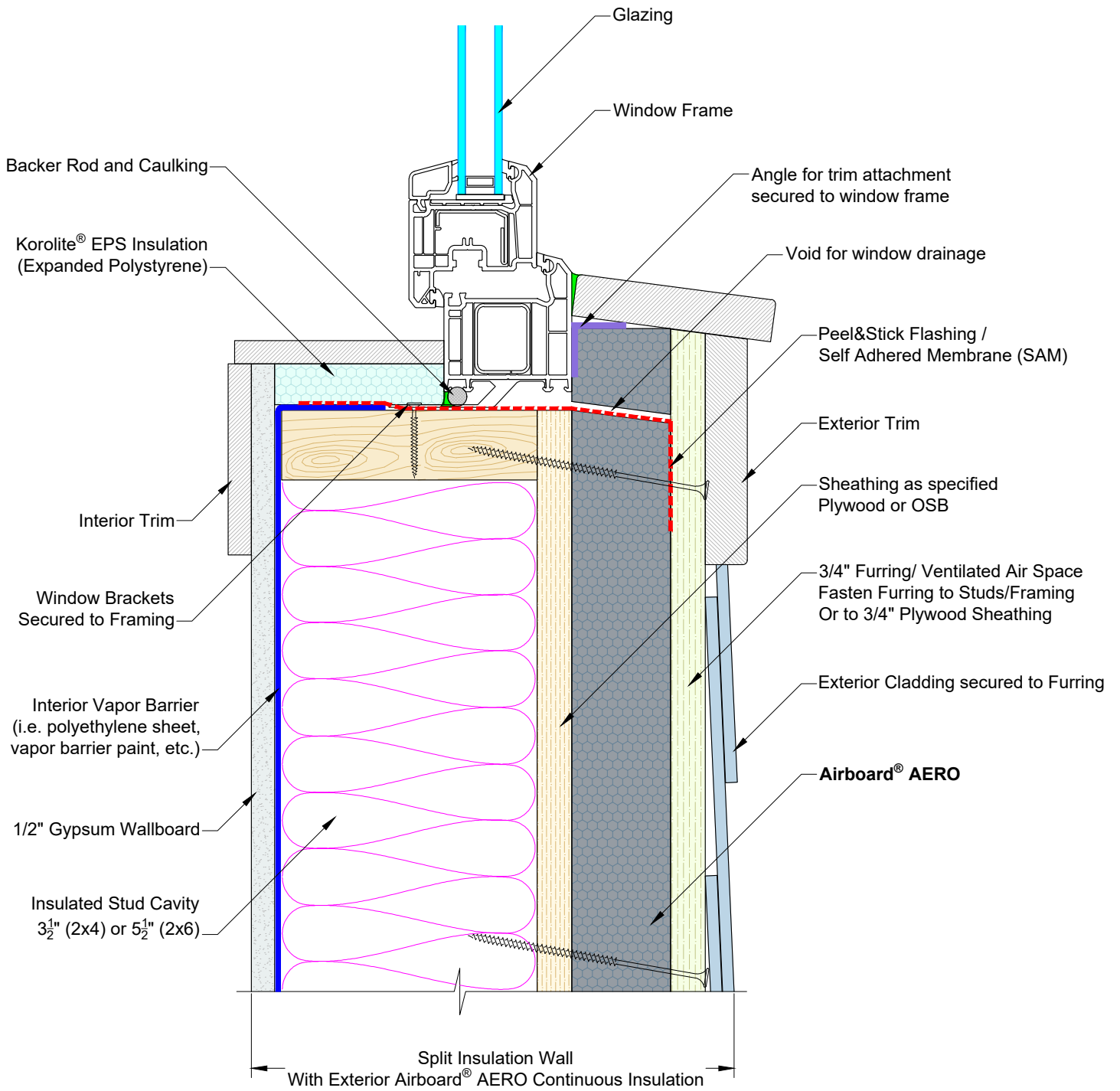
DUE TO VARIANCES IN LOCAL CODES, CONSTRUCTION PRACTICES, AND REQUIREMENTS ALL DETAILS SHALL BE CONSTRUCTED IN ACCORDANCE WITH SUCH LOCAL CODES, CONSTRUCTION PRACTICES, AND REQUIREMENTS REGARDLESS OF DETAIL CONSTRUCTION SHOWN IN DRAWING. AIRFOAM INDUSTRIES LTD. RESERVES THE RIGHT TO CHANGE INFORMATION SHOWN WITHOUT NOTICE.

Airboard® AERO

Laminated, Vapor-Permeable, Graphite-Enhanced (GPS) Insulation

Jamb Detail - Boxed Window

DATE REVISED	2024-07-31	DESIGNED BY	ZP
DRAWING SIZE	8.5" x 11"	APPROVED BY	GK
SCALE	SEE DRAWING	APPROVED DATE	2024-08-01
REVISIONS	01 02 03 04	PROJECT No.	D-12
PROJECT No.		DRAWING No.	AE-15



1 **Airboard® AERO - Sill Detail - Boxed Window**

Scale: N.T.S.



Airfoam Industries Ltd.

19402 56 Ave, Surrey, BC V3S 6K4

Phone: (604) 534-8626

Fax: (604) 534-1212

www.airfoam.com

© Copyright 2024 Airfoam Industries Ltd.

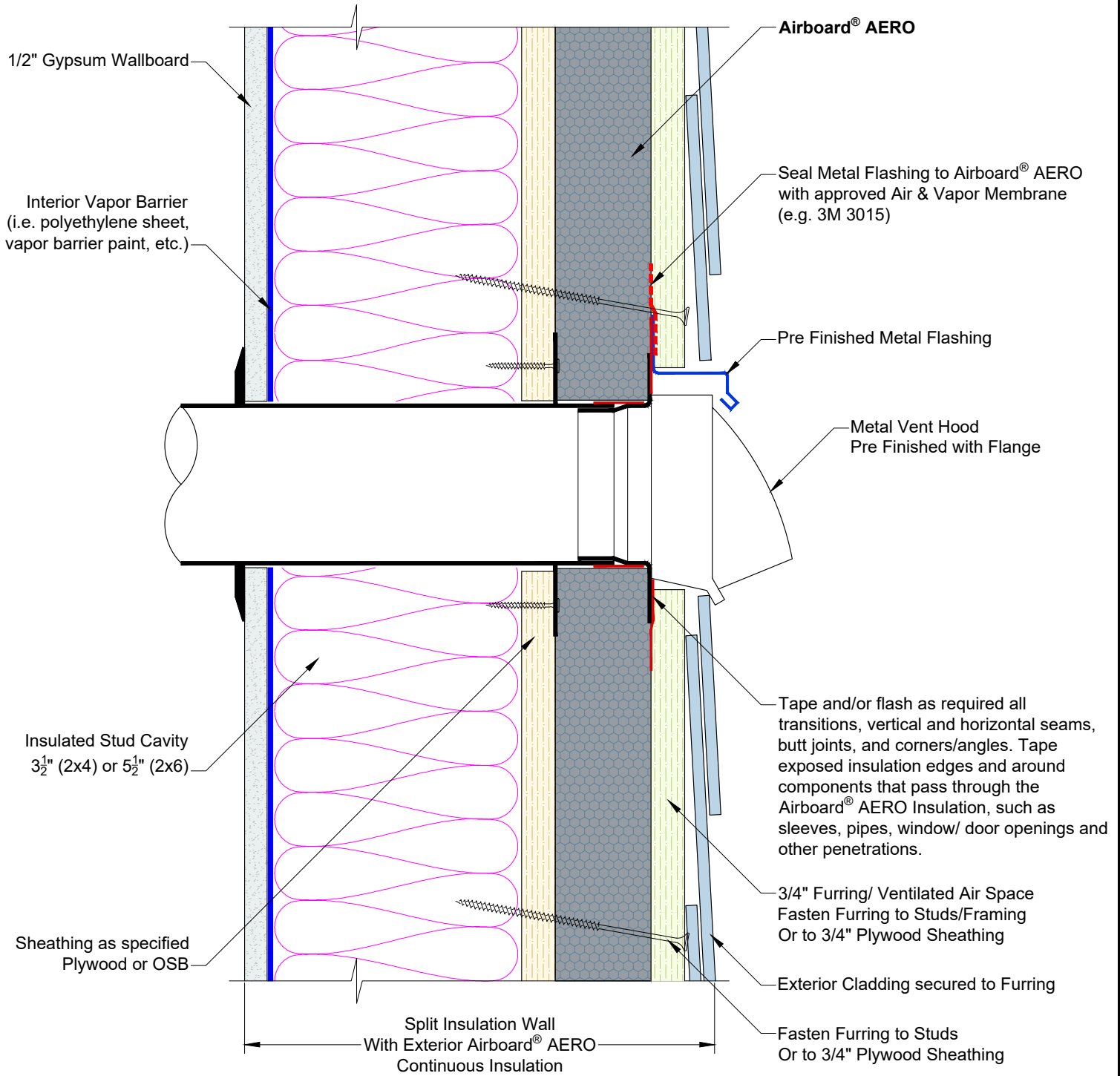
DUE TO VARIANCES IN LOCAL CODES, CONSTRUCTION PRACTICES, AND REQUIREMENTS ALL DETAILS SHALL BE CONSTRUCTED IN ACCORDANCE WITH SUCH LOCAL CODES, CONSTRUCTION PRACTICES, AND REQUIREMENTS REGARDLESS OF DETAIL CONSTRUCTION SHOWN IN DRAWING. AIRFOAM INDUSTRIES LTD. RESERVES THE RIGHT TO CHANGE INFORMATION SHOWN WITHOUT NOTICE.

Airboard® AERO

Laminated, Vapor-Permeable, Graphite-Enhanced (GPS) Insulation

Sill Detail - Boxed Window

DATE REVISED	2024-07-31	DESIGNED BY	ZP
DRAWN BY	8.5" x 11"	APPROVED BY	GK
SCALE	SEE DRAWING	APPROVED DATE	2024-08-01
REVISIONS	01 02 03 04		
PROJECT No.	D-13		
			AE-16



1 Airboard® AERO - Service Penetration
Scale: N.T.S.

Airfoam Industries Ltd.
 19402 56 Ave, Surrey, BC V3S 6K4
 Phone: (604) 534-8626
 Fax: (604) 534-1212
 www.airfoam.com

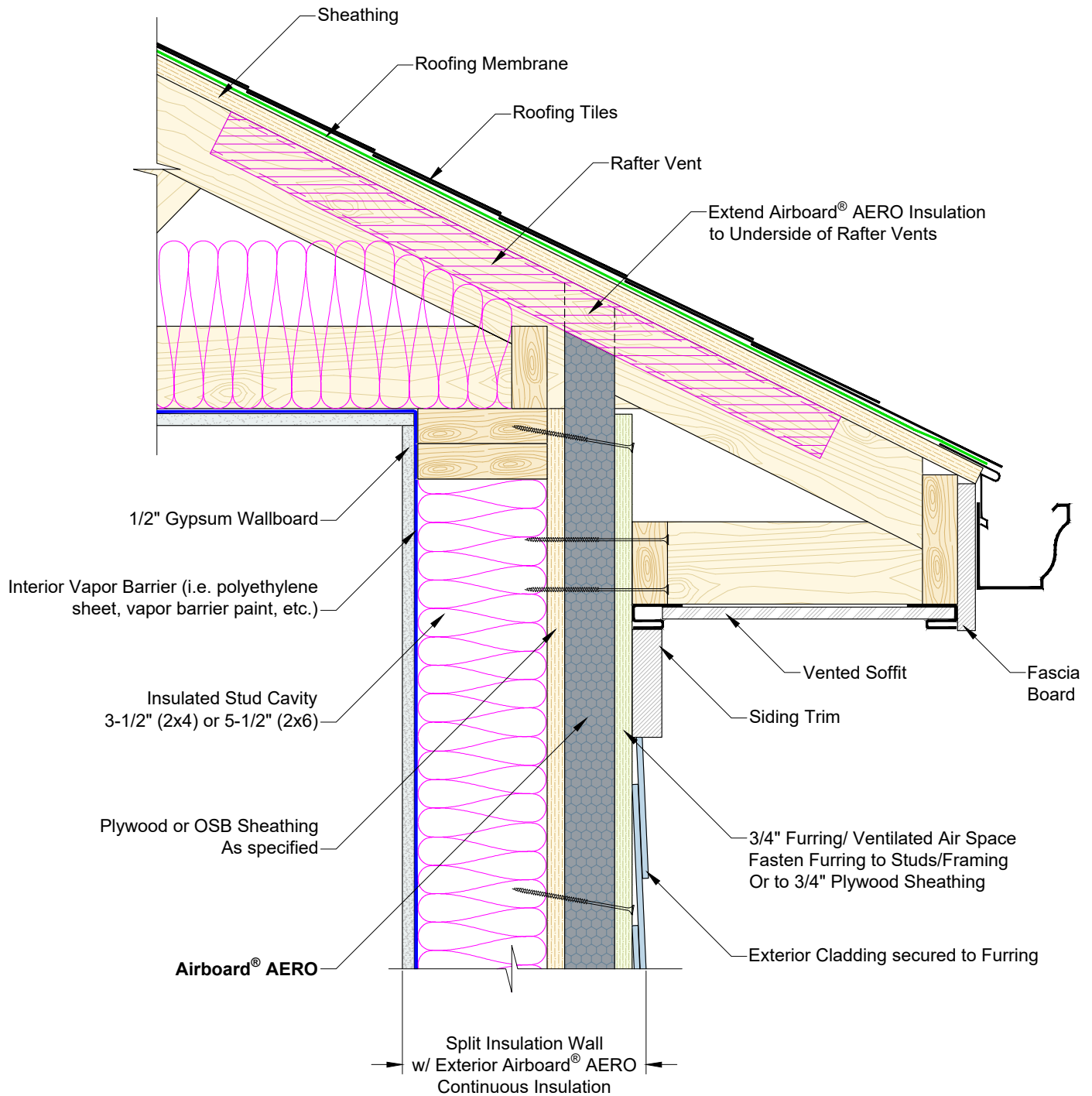
airfoam

© Copyright 2024 Airfoam Industries Ltd.
DUE TO VARIANCES IN LOCAL CODES, CONSTRUCTION PRACTICES, AND REQUIREMENTS ALL DETAILS SHALL BE CONSTRUCTED IN ACCORDANCE WITH SUCH LOCAL CODES, CONSTRUCTION PRACTICES, AND REQUIREMENTS REGARDLESS OF DETAIL CONSTRUCTION SHOWN IN DRAWING. AIRFOAM INDUSTRIES LTD. RESERVES THE RIGHT TO CHANGE INFORMATION SHOWN WITHOUT NOTICE.

Airboard® AERO
 Laminated, Vapor-Permeable, Graphite-Enhanced (GPS) Insulation

Service Penetration Detail

DATE ISSUED	2024-07-31	DESIGNED BY	ZP
SHEET SIZE	8.5" x 11"	APPROVED BY	GK
SCALE	SEE DRAWING	APPROVED DATE	2024-08-01
REVISIONS	01 02 03 04		
PROJECT No.	D-14		
			AE-17



1

Airboard® AERO - Roof Trusses Perpendicular to Wall

Scale: N.T.S.



Airfoam Industries Ltd.

19402 56 Ave, Surrey, BC V3S 6K4
 Phone: (604) 534-8626
 Fax: (604) 534-1212
 www.airfoam.com

© Copyright 2024 Airfoam Industries Ltd.

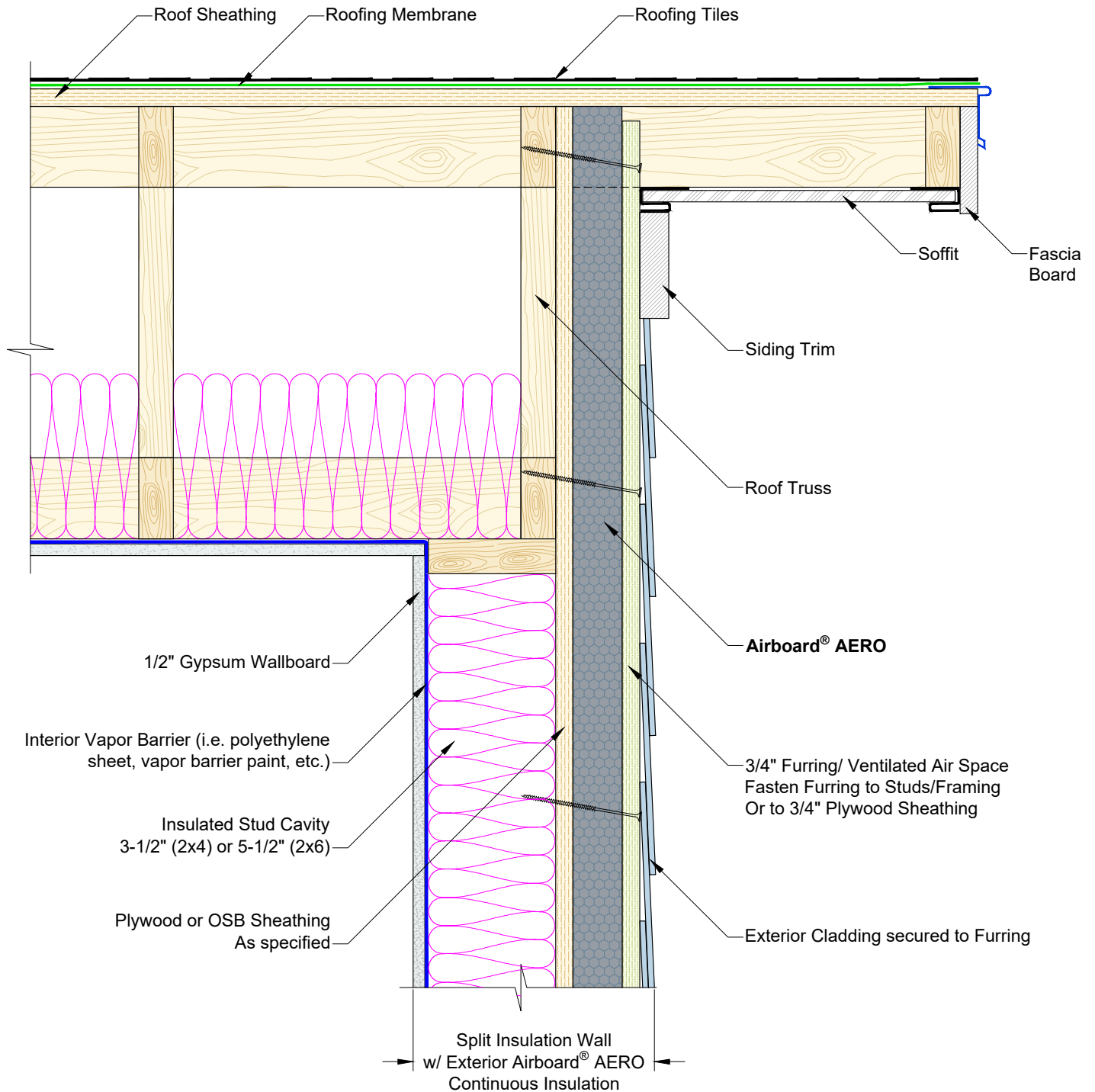
DUE TO VARIANCES IN LOCAL CODES, CONSTRUCTION PRACTICES, AND REQUIREMENTS ALL DETAILS SHALL BE CONSTRUCTED IN ACCORDANCE WITH SUCH LOCAL CODES, CONSTRUCTION PRACTICES, AND REQUIREMENTS REGARDLESS OF DETAIL CONSTRUCTION SHOWN IN DRAWING. AIRFOAM INDUSTRIES LTD. RESERVES THE RIGHT TO CHANGE INFORMATION SHOWN WITHOUT NOTICE.

Airboard® AERO

Laminated, Vapor-Permeable, Graphite-Enhanced (GPS) Insulation

Roof Detail - Trusses Perpendicular to Wall

DATE ISSUED	2024-07-31	DESIGNED BY	ZP
SHEET SIZE	8.5" x 11"	APPROVED BY	GK
SCALE	SEE DRAWING	APPROVED DATE	2024-08-01
REVISIONS	01 02 03 04	PROJECT No.	D-15
		SHEET	AE-18



1 Airboard® AERO - Roof Trusses Parallel to Wall
Scale: N.T.S.



Airfoam Industries Ltd.

19402 56 Ave, Surrey, BC V3S 6K4

Phone: (604) 534-8626

Fax: (604) 534-1212

www.airfoam.com

© Copyright 2024 Airfoam Industries Ltd.

DUE TO VARIANCES IN LOCAL CODES, CONSTRUCTION PRACTICES, AND REQUIREMENTS ALL DETAILS SHALL BE CONSTRUCTED IN ACCORDANCE WITH SUCH LOCAL CODES, CONSTRUCTION PRACTICES, AND REQUIREMENTS REGARDLESS OF DETAIL CONSTRUCTION SHOWN IN DRAWING. AIRFOAM INDUSTRIES LTD. RESERVES THE RIGHT TO CHANGE INFORMATION SHOWN WITHOUT NOTICE.

Airboard® AERO

Laminated, Vapor-Permeable, Graphite-Enhanced (GPS) Insulation

Roof Detail - Trusses Parallel to Wall

DATE ISSUED	2024-07-31	DESIGNED BY	ZP
SHEET SIZE	8.5" x 11"	APPROVED BY	GK
SCALE	SEE DRAWING	APPROVED DATE	2024-08-01
REVISIONS	01 02 03 04		
PROJECT No.	D-16		
			AE-19