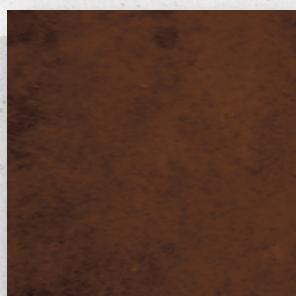
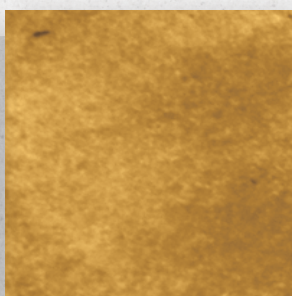


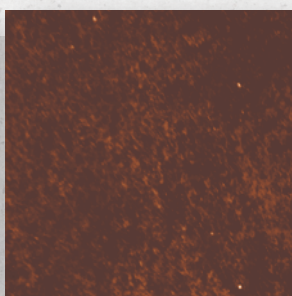
Available Colors



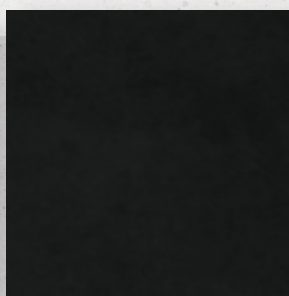
Buffalo
WS-1100



Aspen Gold
WS-300



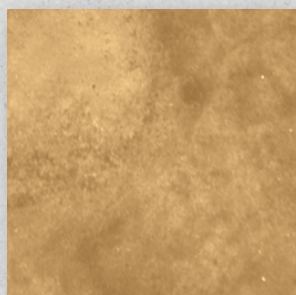
Chestnut
WS-1000



Onyx
WS-1500



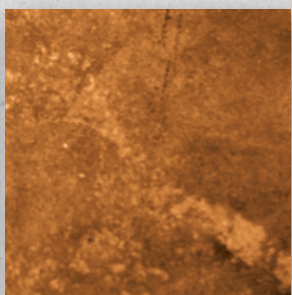
Azure
WS-100



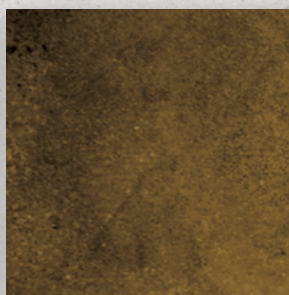
Tawny
WS-400



Moss
WS-200



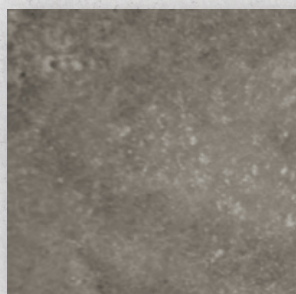
Russet
WS-600



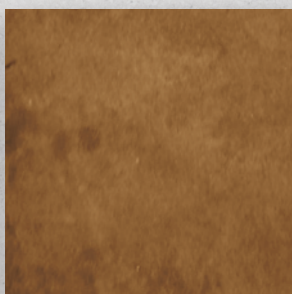
Sandalwood
WS-800



Coal
WS-1400



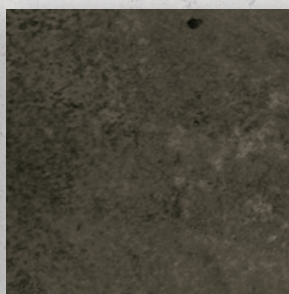
Arctic Gray
WS-1200



Buckskin
WS-500



Red Rock
WS-900



Gunmetal
WS-1300



Leather
WS-700

This color chart is a representation only and does not guarantee that the final color will be an exact match or even reasonably close to the sample. The colors produced will rely heavily on skill, practice and experimentation. Each concrete slab will react differently. Application methods and age of the concrete will result in different tones or hues and in the case of very old or very porous concrete, the stain may have little or no effect. Even in a controlled environment, cements, aggregates, water content, and concrete curing methods will contribute to different results. Test sections should be done to verify suitability and appearance prior to application. When using multiple bottles of stain of the same color, mix bottles of stain together.

Features:

- Virtually Endless Colors
- Easy to Apply and Maintain
- Fast Turn-Around
- Cost-Efficient



Application Methods

Coverage

One gallon will cover approximately 100-300 square feet, depending on application technique and concrete porosity, among other factors. ALWAYS perform representative samples according to the Living EarthTM Water-Based Stain TDS.

Concrete Preparation and Evaluation

All concrete should be fully cured (28 days.) Concrete must be free of sealers, paint, oil, mastic, or anything that would interfere with the reaction of the stain. The subsurface should be well drained to avoid hydrostatic pressure. Floor moisture should be evaluated.

Having a clean surface is paramount for a successful stain application. If the concrete surface is clean, in good condition, and has cured to a uniform, light color, no preliminary treatments are necessary. Just sweep clean and begin application of Living EarthTM Water-Based Stain. If the concrete surface has signs of dark moisture and alkali spotting, scrub with EZ-PrepTM and rinse well. Some cleaning may require other measures that should be evaluated (grinding or shot blasting).

Some substrates are excessively porous. Concrete that was finished poorly (not closed with a steel trowel), broomed or very old concrete may absorb Living EarthTM so deeply that little color, if any, is visible. In these cases, use of Living EarthTM Primer is required. See Living EarthTM Primer TDS for application details. It is strongly recommended that a small inconspicuous section of the concrete be tested first. Be sure to let the stain DRY before deciding on the effectiveness of the stain.

Protect adjacent areas from over-spray, runoff, spills, and tracking, prior to application. This product should not be placed on concrete or overlays that are flaking or spalling.

Application

Please Note: The color of the material in the bottle will not necessarily be the resulting color after the stain has completely colored the concrete. When using multiple bottles of stain, it is strongly advised that stain is mixed together in a large bucket to avoid color variation that may occur between bottles.

MIXING: Living EarthTM pigments will settle. Always shake container to mix thoroughly.

DILUTION: Dilute with water to any desired strength, usually between no water dilution to approximately 4 parts water to 1-part Living EarthTM Water-Based Stain (4:1).

MASK: Mask all areas requiring protection. Be certain to mask to an ample height, especially if spraying.

METHODS: Due to the extreme versatility of Living EarthTM Water-Based Stains, there are myriad methods of application, all of which can be combined and altered to some degree. The applicator has enormous latitude in selecting methods, and will greatly affect the finished color and appearance. Common methods include:

1. Pump sprayer - Utilize a cone tip and keep sprayer wand in a circular motion to avoid wind rows.
2. Ragging, sponging, etc. - Most commonly used to accent or layer.
3. Painters' airless sprayer - Especially useful in covering large areas.
4. HVLP or gravity cup sprayer - Useful for precise placement and in accenting areas.

NOTE: Applying multiple coats is optional. Supplementary colors may be combined at desired rates.

Equipment and Supplies

A plastic pump sprayer, HVLP, gravity cup or painters' airless sprayer is recommended for application of stain.

Disposable chip brushes allow for reaching tight areas. Plastic containers (1-2 quarts) will help with this as well.

Sealing

Living EarthTM Water-Based Stain alone does not affect slip resistance, but the sealer selected to finish the project will. All concrete must be sealed. After the concrete has been allowed to cure for 28 days, protect the surface with Concrete Coatings, Inc. SuperSealTM, GemKoteTM and/or SuperGlazeTM sealers or ShieldTM epoxies, ProTekTM polyaspartics and/or DurathaneTM. Please get a copy of the appropriate Technical Information and Material Safety Data Sheet before attempting to use these products.

Sealing a stained surface will darken and bring out the brilliance and depth in color of a water-based stain. Different sealers may affect the intensity of a stained surface. Epoxy and solvent based sealers will bring out a deep and brilliant look while water-based sealers may have a more aged, antiqued look. Exterior surfaces or surfaces that may become wet, oily, or greasy may require extra attention. We recommend our SlipGripTM or aluminum oxide to aid in slip resistance. Call your representative for additional details on slip resistance additives.

Maintenance

The sealed surface should be inspected periodically for areas of thin or traffic-worn sealer. Reapply as needed, according to the appropriate Technical Information Sheet.

DuraWaxTM may be applied as a sacrificial coat on top of the seal coat. Please get a copy of the appropriate Technical Information and Safety Data Sheet before attempting to use this product.

Warranty

This product is intended for use by licensed contractors and installers, knowledgeable and trained in the use of these products. It is warranted to be of uniform quality, within manufacturing tolerances. The manufacturer, Concrete Coatings Inc., has no control over the use of this product, therefore, no warranty, expressed or implied, is or can be made either as to the effects or as results of such use. Product proved to be defective will be replaced at manufacturer's discretion. The end user shall be responsible for determining product's suitability and assumes all risks and liability. There are no other warranties by Concrete Coatings Inc. of any nature, expressed or implied, including any warranty of merchantability or fitness for a particular purpose in connection with this product. Concrete Coatings Inc. shall not be liable for damages of any sort, including remote or consequential damages, resulting from the use of this product or any claimed breach of warranty, whether expressed or implied, from any other cause whatsoever. Concrete Coatings Inc. will not be responsible for use of this product in a manner to infringe on any patent held by others.

Caution: Keep Out of Reach of Children

Before using or handling, read the Material Safety Data Sheet, Technical Data Sheet and Warranty. **DO NOT TAKE INTERNALLY!** Avoid contact with skin and eyes. Use only with adequate ventilation and use a respirator when levels are above application limits.