



BROADVIEW ELEMENTARY SCHOOL

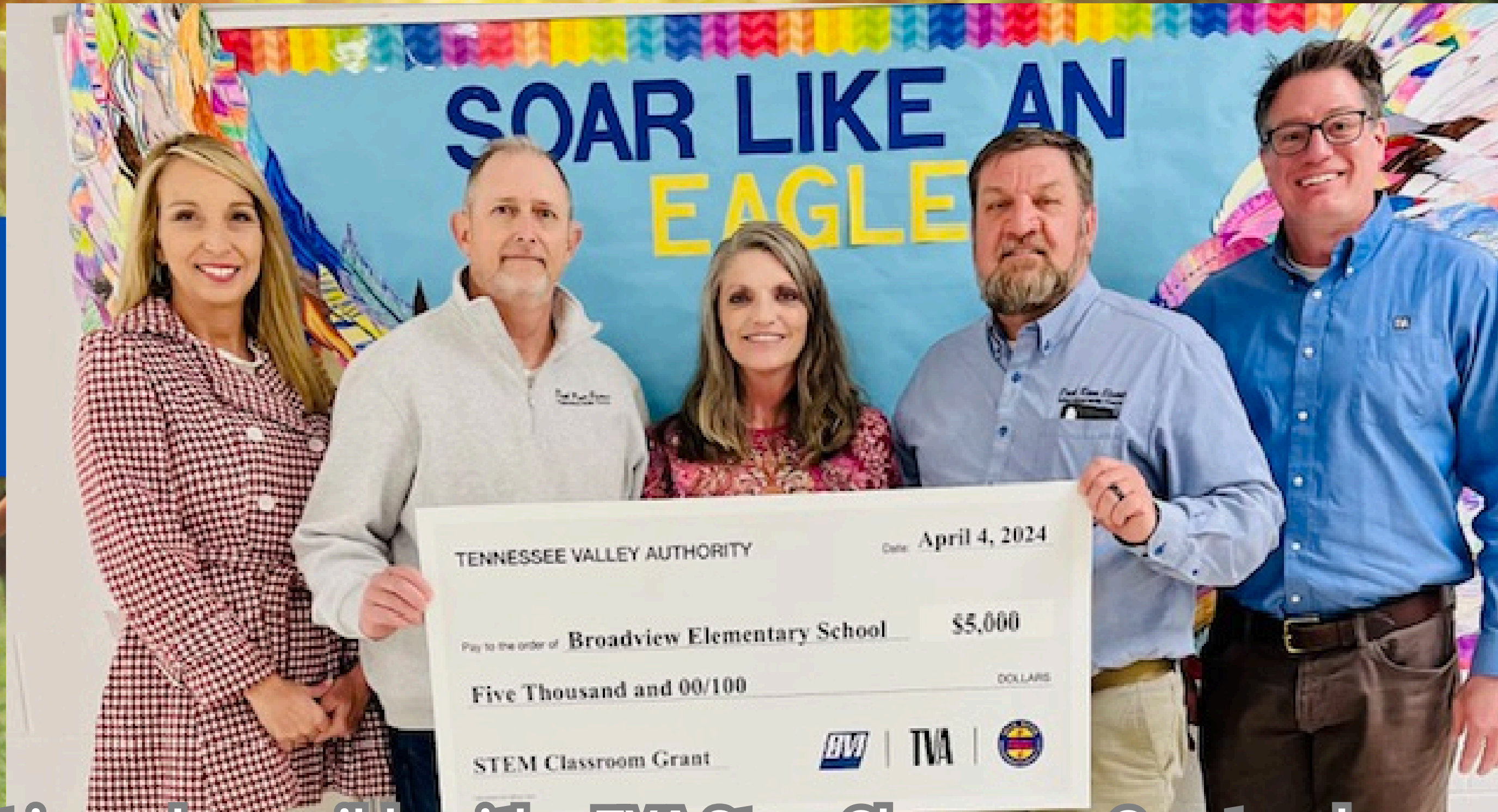
the

EAGLES NEST

OUTDOOR
LEARNING LAB



<https://broadview.fcstn.net>



The project is made possible with a TVA Stem Classroom Grant and support from our Broadview Community. The goal is to create an immersive learning environment that includes an outdoor classroom, 4 interactive stem stations and a ½ mile nature trail.



INTRODUCTION

The Eagles Nest at Broadview Elementary School is envisioned as an outdoor learning lab that uses the environment as the classroom for developing a wide range of skills, including scientific observation, investigation, and problem solving. The project will engage a wide range of community partners from local surveyors and landscape companies to wildlife resource officers and foresters who will help develop the space while also showcasing a variety of careers to our students. In addition to experiential education, the Eagles Nest will foster environmental stewardship and responsibility by upholding a code of conduct to maintain the area for others to enjoy.



DIVERSE LEARNING ENVIRONMENTS

03

The Eagles Nest creates an inclusive and accessible environment for all students, regardless of their educational background, social status or financial circumstance. Over the last few years, our school has seen a significant rise in students with disabilities and economic challenges. The Eagles Nest will provide an alternative, calm environment that invites exploration, making it conducive for honing all physical, mental, and academic abilities.

Inclusive & Accessible



COMPONENTS

An Outdoor Learning Lab

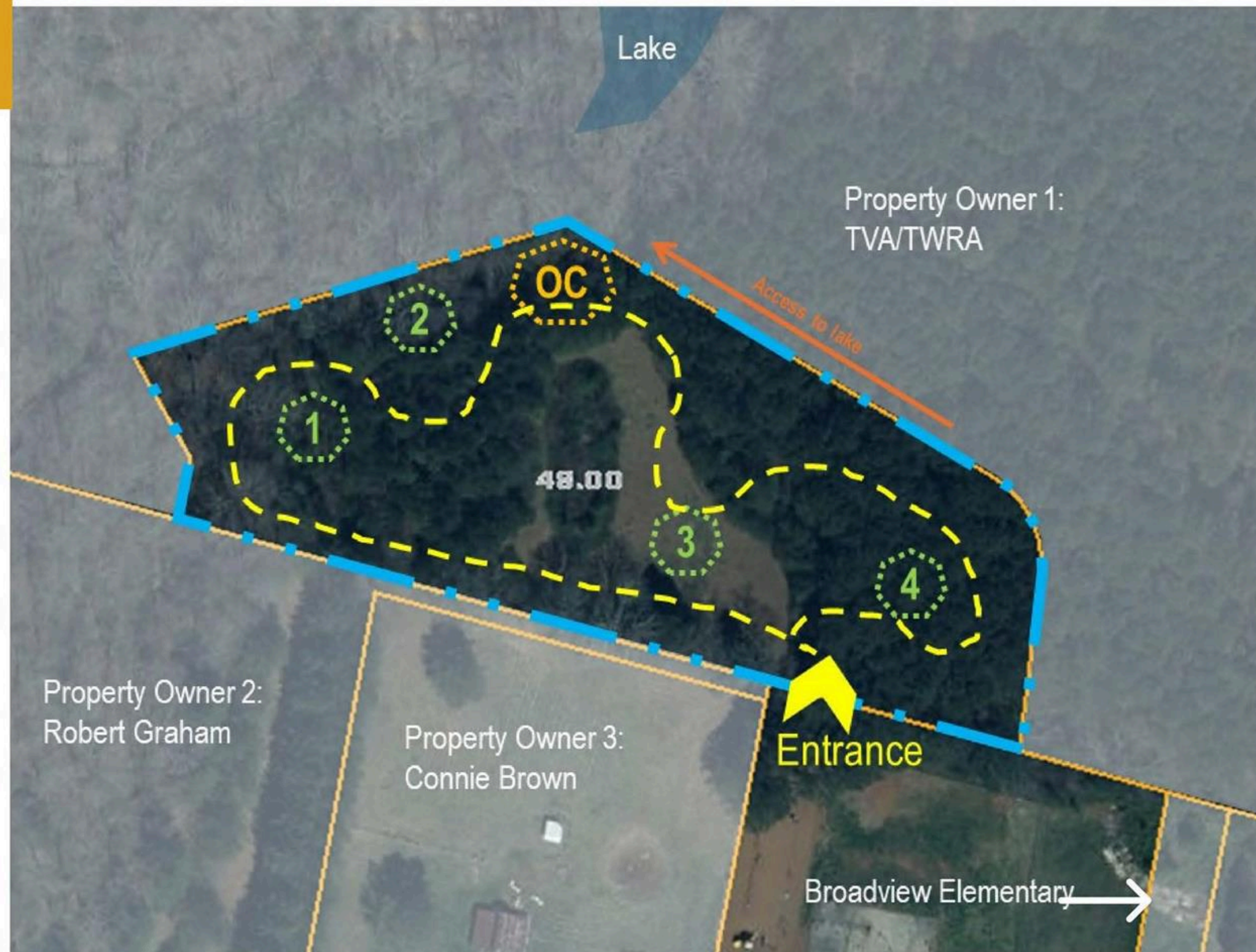
The Eagles Nest will be located behind Broadview Elementary on underutilized school property adjacent to Tims Ford Lake, a part of the TVA system. The 3.4-acre site will include a quarter-mile nature path with plant identification markers, four interactive STEM stations, and an outdoor classroom for group learning and discussion.



04



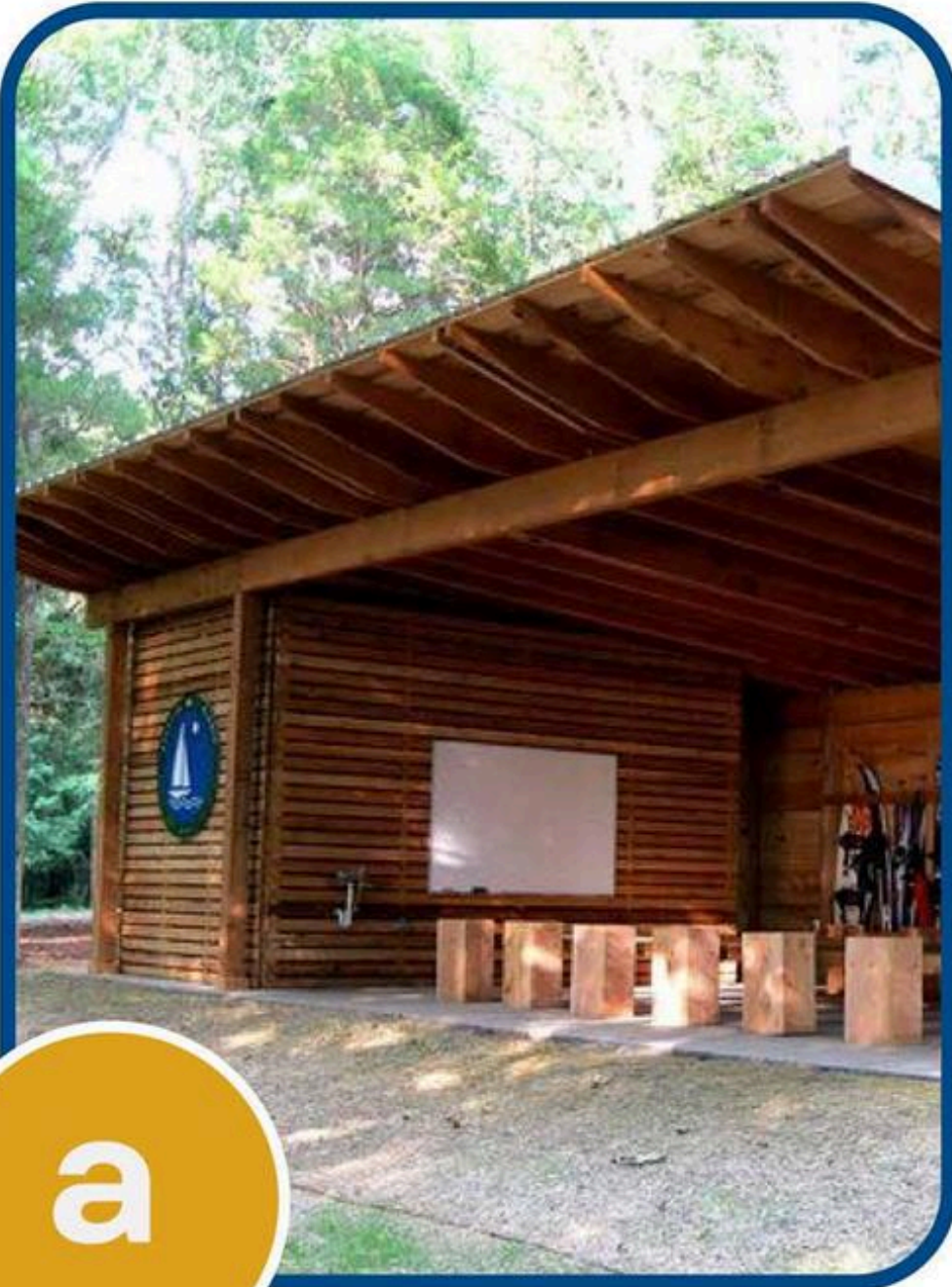
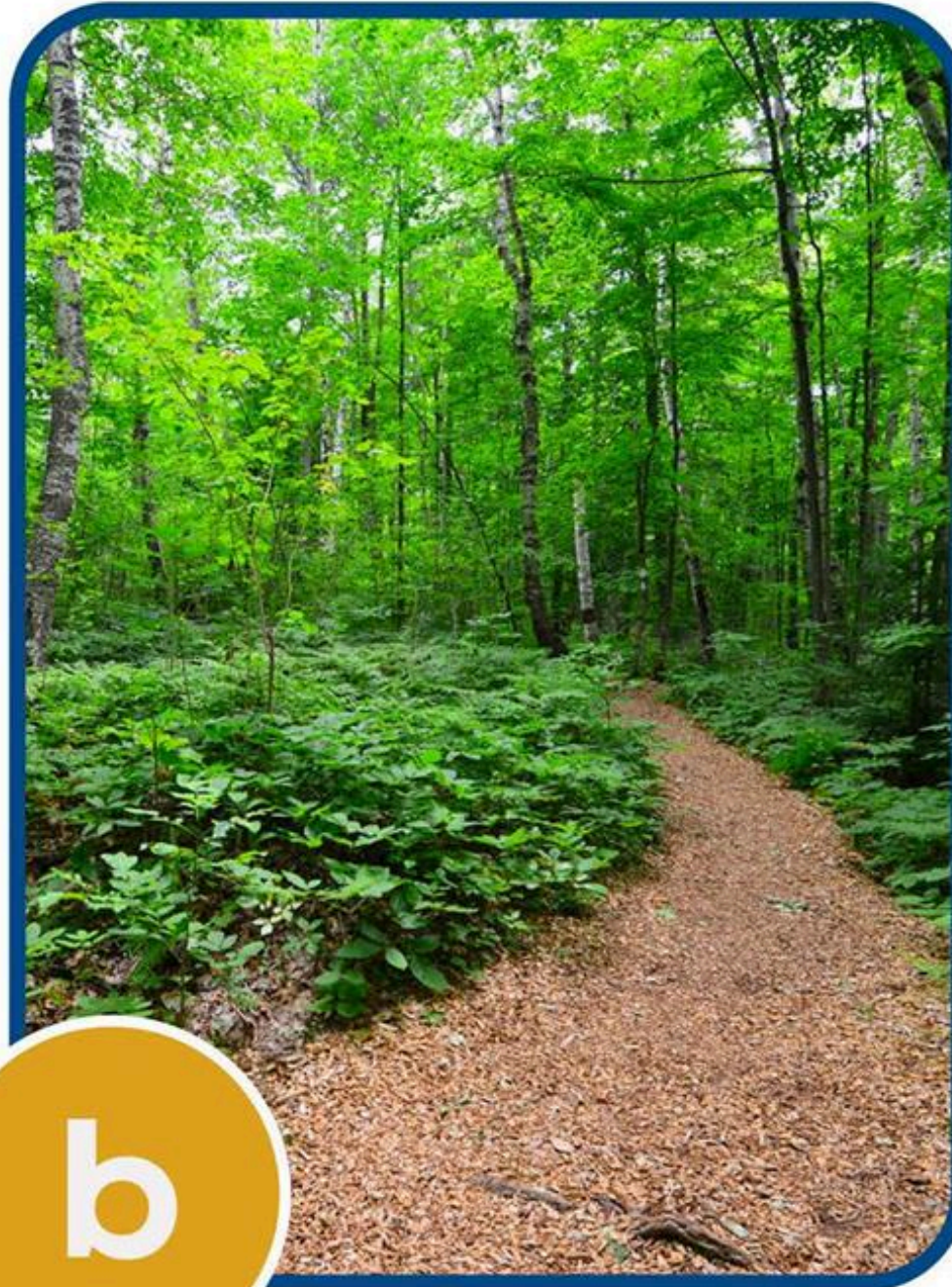
<https://broadview.fcstn.net>



SITE DIAGRAM

Station Key

- 1. Healthy Habitats
- 2. Wondrous Weather
- 3. Plant Patch
- 4. Numbers in Nature
- OC. Outdoor Classroom

**a****CLASSROOM****b****NATURE TRAIL****c****INTERACTIVE STEM
STATIONS**

INTERACTIVE STEM STATIONS

PLANT PATCH

This station will focus on the planting, growing, monitoring and harvesting of 3 distinct plant types: root vegetables, native wildflowers and native trees.

1

HEALTHY HABITATS

Three observable habitats will be developed including a worm farm, frog pond and bird feeders and houses. In addition to intentional habitat creation, this station will facilitate plot observation activities.

2

WONDEROUS WEATHER

Weather will be monitored, observed and manipulated at this station which includes weather monitoring equipment, a rain barrel, and an interactive hydrology test center.

3

NUMBERS IN NATURE

Students will engage in a variety of measuring, recording and comparing exercises using natural materials found onsite. Tools for this station include an outdoor scale, rulers, and calipers.

4

FAMILY WORK DAYS

JUNE 1

GOALS:

1. Clear and construct Nature Trail
2. Begin classroom construction

1

JUNE 22

GOALS:

1. Complete Nature Trail
2. Classroom construction

2

JULY 13

GOALS:

1. Entryway
2. Signage
3. Stem Station development

3

COMMUNITY COLLABORATION



STEMready
Grant Recipient



LAWNS
UNLIMITED



07

#HealthyTreesHealthyLives
#UrbanWoodWednesday

SCHOOLS WITH LARGER TREE CANOPIES HAVE
better student outcomes
THAN SCHOOLS WITH FEWER TREES

