



WESTERN STATES METAL ROOFING

USA | CANADA | MEXICO | SALES@CORTEN.COM | 855-4CORTEN (855-426-7836)

CORTEN.COM

**CORTEN® STRUCTURAL COMPONENTS
ASTM A606-4/A588/A847**

IMMEDIATE AVAILABILITY. INEXPENSIVE DELIVERY.



WESTERN STATES METAL ROOFING

USA | CANADA | MEXICO | SALES@CORTEN.COM | CORTEN.COM | 855-4CORTEN

Since 1996, Western States Metal Roofing has been the leading provider of weathering steel products. We offer the largest selection of structural components and metal roofing products designed to meet or exceed your building requirement needs. With manufacturing and storage facilities strategically placed throughout the United States, our company specializes in buying Corten in large quantities and then passing those cost savings on to the end user. We inventory large quantities of A606-4, A588 and A847 steel.

- Route trucks servicing the entire country.
- Immediate and inexpensive delivery.

COIL

A606-4 AND A588 WEATHERING STEEL



- Coils can be slit to custom widths.
- Inquire about sizes that are not shown.
- Available for immediate pick up or delivery.

Gauge/Thickness

	22	20	18	16	14	12	11	10	8	3/16"	1/4"	3/8"	1/2"	3/4"
72"										●	●	●	●	●
60"				●	●	●	●	●	●	●	●	●	●	●
48"	●	●	●	●	●	●	●	●	●	●	●	●	●	●
46"	●													
43"	●													
24"	●	●	●	●	●	●	●	●	●	●	●	●	●	●
22"	●													
20"	●													
18"	●													
14"	●													

- In Stock

RECOMMENDATIONS AND CAUTIONS

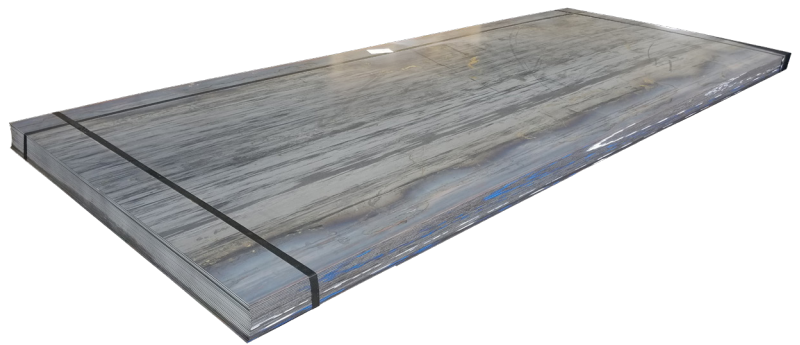
- A606-4 and bare steel performs best in environments with low humidity.
- A606-4 should not be used with dissimilar metals other than stainless steel. This will decrease the lifespan of the product.
- Screws and clips for A606-4/Corten MUST be stainless steel. Screw head will be painted brown.
- Roofing underlayment should be a HIGH TEMPERATURE UNDERLAYMENT.
- Not recommended near salt spray environments and frequent rain locations as it will shorten the life expectancy of the products.
- Acid washing will degrade steel performance.
- Rust runoff will likely stain the surrounding surfaces.
- NO WARRANTIES FOR THESE PRODUCTS.

Material does not arrive pre-rusted. Panel will rust naturally with exposure to the weather. Use stainless steel fasteners with a painted brown screw head.

FLAT SHEETS

A606-4 AND A588 WEATHERING STEEL

- Available Widths: 48", 60", 72".
- Available Lengths: 96", 120", 144".
- Inquire about sizes that are not shown.



Gauge/Thickness

	22	20	18	16	14	12	11	10	8	3/16"	1/4"	3/8"	1/2"	3/4"
72"										●	●	●	●	●
60"				●	●	●	●	●	●	●	●	●	●	●
48"	●	●	●	●	●	●	●	●	●	●	●	●	●	●
46"	●													
43"	●													
24"	●	●	●											
22"	●													
20"	●													
18"	●													
14"	●													

● In Stock

PLATE

A588 WEATHERING STEEL

- Available Widths: 96".
- Available Lengths: 20', 40'.

Width x Length

	96" x 240"	96" x 480"
3/16"	●	●
1/4"	●	●
5/16"	●	●
3/8"	●	●
1/2"	●	●
5/8"	●	●
3/4"	●	●
1"	●	●
1-1/8"	●	
1-1/4"	●	
1-3/8"	●	
1-1/2"	●	
1-3/4"	●	
2"	●	
>2" - 5"	●	

● In Stock

Inquire about sizes that are not shown.

FLAT BAR

A588 WEATHERING STEEL

- Available Lengths: 20'.

Thickness

	1/4"	3/8"	1/2"	5/8"	3/4"	1"
1"	●	●	●			
1-1/4"					●	
1-1/2"	●	●	●		●	
2"	●	●	●		●	●
2-1/2"	●	●	●			
3"	●	●	●	●	●	●
3-1/2"		●	●			
4"	●	●	●	●	●	●
5"	●	●	●	●	●	
6"	●	●	●	●	●	●
7"		●	●			
8"	●		●			

● In Stock

Inquire about sizes that are not shown.

ANGLE

A588 WEATHERING STEEL

- Available Lengths: 20'
- Inquire about sizes that are not shown.



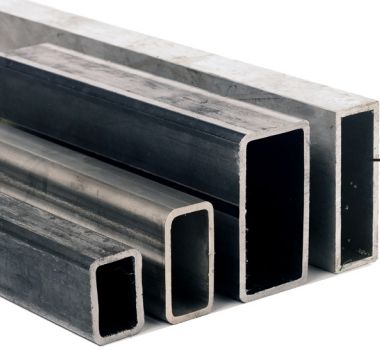
Gauge/Thickness

	1/8" (11 GA)	3/16"	1/4"	5/16"	3/8"	1/2"	5/8"	3/4"	1"
1" x 1"	•								
1-1/4" x 1-1/4"	•	•							
1-1/2" x 1-1/2"	•	•	•						
1-3/4" x 1-3/4"		•							
2" x 2"	•	•	•	•	•				
2-1/2" x 2-1/2"		•	•	•	•				
3" x 2"		•	•		•				
3" x 3"		•	•	•	•	•			
3-1/2" x 3-1/2"			•		•	•			
4" x 3"			•	•	•				
4" x 3-1/2"			•	•	•	•			
4" x 4"			•	•	•	•	•	•	
5" x 3"			•		•	•			
5" x 3-1/2"			•	•		•			
5" x 5"				•	•	•		•	
6" x 4"				•	•	•		•	
6" x 6"				•	•	•	•	•	•
7" x 4"				•	•	•			
8" x 4"						•			
8" x 8"						•	•	•	•

Width

- In Stock

Inquire about sizes that are not shown.



TUBE/PIPE

A847 WEATHERING STEEL

- A847 tube and pipe are NOT pre-rusted.
- Can be cut to custom lengths if required.
- Inquire about sizes that are not shown.

RECTANGULAR TUBE

A847 WEATHERING STEEL

- Available Lengths: 24' or 48'

		Thickness				
		1/8" (11 GA)	3/16"	1/4"	5/16"	3/8"
Width	3" x 2"	•	•			
	4" x 2"		•	•		
	4" x 3"		•	•		
	5" x 3"			•		
	6" x 2"			•		
	6" x 3"			•		
	6" x 4"			•	•	
	8" x 4"			•		

- In Stock Inquire about sizes that are not shown.

SQUARE TUBE

A847 WEATHERING STEEL

- Available Lengths: 24' or 48'

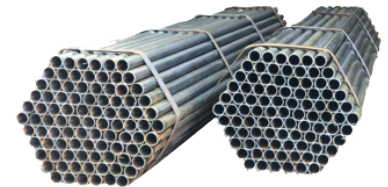
		Thickness				
		1/8" (11 GA)	3/16"	1/4"	3/8"	1/2"
Width	1" x 1"	•				
	1-1/2" x 1-1/2"	•	•			
	2" x 2"	•	•	•		
	2-1/2" x 2-1/2"		•	•		
	3" x 3"		•	•	•	
	4" x 4"		•	•	•	
	5" x 5"			•		
	6" x 6"		•	•	•	
	8" x 8"			•	•	•
	10" x 10"			•	•	

- In Stock Inquire about sizes that are not shown.

ROUND PIPE

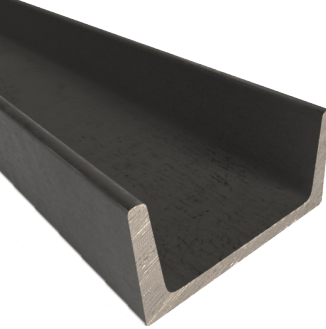
A847 WEATHERING STEEL

- Available Lengths: 21'-0" sections.
- Inquire about sizes that are not shown.



Nominal Pipe Diameter (inches)	Outside Diameter (inches)	Inside Diameter (inches)	Wall Thickness (inches)
1	1.315	1.049	.133
1-1/4	1.660	1.380	.140
1-1/2	1.900	1.610	.145
2	2.375	2.067	.154
2-1/2	2.875	2.469	.203
3	3.50	3.068	.216
3-1/2	4	3.548	.226
4	4.5	4.026	.237
5	5.563	5.047	.250
6	6.625	6.056	.280
8	8.625	7.981	.322

In Stock



CHANNEL

A588 WEATHERING STEEL

- Available Lengths: 20' sections.
- Please inquire for sizes not shown.

Size	Dimensions	Weight Per Ft.
C3	3"x1.41"x.171 Thickness	4.1#
C3	3" x 1.498" x .258 Thickness	5.0#
C4	4" x 1.584" x .184 Thickness	5.4#
C4	4" x 1.721" x .321 Thickness	7.25#
C5	5" x 1.75" x .190 Thickness	6.7#
C5	5" x 1.885" x .325 Thickness	9.0#
C6	6" x 1.92" x .20 Thickness	8.2#
C6	6" x 2.034" x .314 Thickness	10.5#
C6	6" x 2.157" x .437 Thickness	13.0#
C7	7" x 2.09" x .210 Thickness	9.8#
C7	7" x 2.194" x .314 Thickness	12.25#
C8	8" x 2.26" x .220 Thickness	11.5#
C8	8" x 2.43" x .303 Thickness	13.75#
C8	8" x 2.527" x .487 Thickness	18.75#
C10	10" x 2.6" x .240 Thickness	15.3#
C10	10" x 2.739" x .379 Thickness	20.0#
C10	10" x 2.886" x .526 Thickness	25.0#
C10	10" x 3.033" x .673 Thickness	30.0#
C12	12" x 2.942" x .282 Thickness	20.7#
C12	12" x 3.047" x .387 Thickness	25.0#
C12	12" x 3.17" x .510 Thickness	30.0#
C15	15" x 3.4" x .40 Thickness	33.9#

In Stock



ROUNDS/SQUARES

A588 WEATHERING STEEL

- Available Lengths: 20' sections.
- Please inquire for sizes not shown.



Size	Length	Rounds	Squares
1/2"	240"	•	•
5/8"	240"	•	•
3/4"	240"	•	•
7/8"	240"	•	
1"	240"	•	
1-1/8"	240"	•	
1-1/4"	240"	•	
1-3/8"	240"	•	
1-1/2"	240"	•	
1-5/8"	240"	•	
1-3/4"	240"	•	
2"	240"	•	
2-1/4"	240"	•	
2-1/2"	240"	•	
2-3/4"	240"	•	
3"	240"	•	
>3"	Inquire	Inquire	Inquire

• In Stock



LANDSCAPE EDGING

A606-4 WEATHERING STEEL

- Inquire about sizes and gauges not shown.

Size

	4" x 120"	8" x 120"	12" x 120"
Gauge 14	•	•	•
Gauge 11	•	•	•

• In Stock

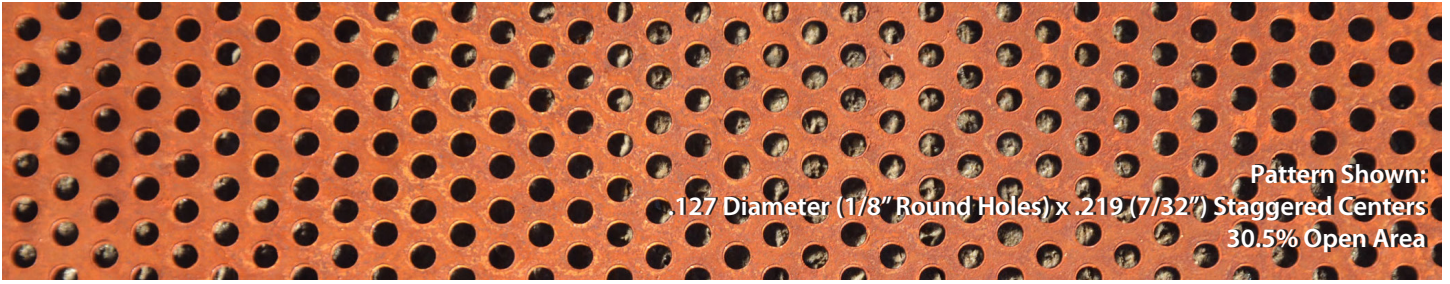
STAKES

Size

	8" Overall (4" Face Coverage)	12" Overall (8" Face Coverage)
Gauge 11	•	•

• In Stock

PERFORATED FLAT SHEETS, COIL, ROOFING AND WALL PANELS



Flat Sheets

- Available Size In Stock: 48" x 120"
- Available Gauges In Stock: 22 GA, 16 GA, 11 GA.
- Custom widths, gauges, and perforation patterns are available upon request.
- Minimum quantities apply.

Coil

- Available Width: 48"
- Available Gauges: 22.
- Custom widths, gauges, and perforation patterns are available upon request.
- Minimum quantities apply.

AVAILABLE PERFORATED PATTERNS

22 GA

.127 Diameter (1/8" Round Holes) x .219 (7/32") Staggered Centers
30.5% Open Area



16 GA

.191 Diameter (3/16" Round Holes) x .297 (5/16") Staggered Centers
32.65% Open Area



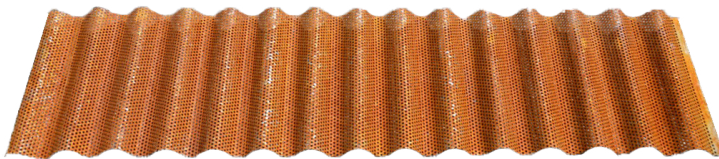
11 GA

.25 Diameter (1/4" Round Holes) x .375 (3/8") Staggered Centers
40.31% Open Area

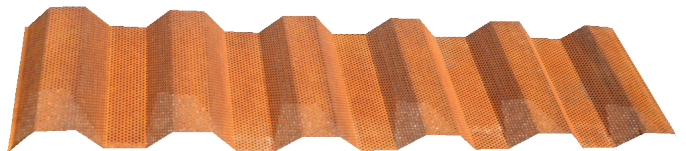


PERFORATED ROOFING AND WALL PANELS

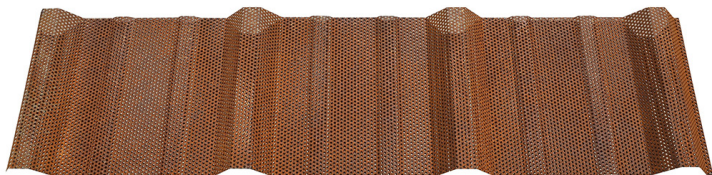
22 Gauge | .127 Diameter (1/8" Round Holes) x .219 (7/32") Staggered Centers | 30.5% Open Area



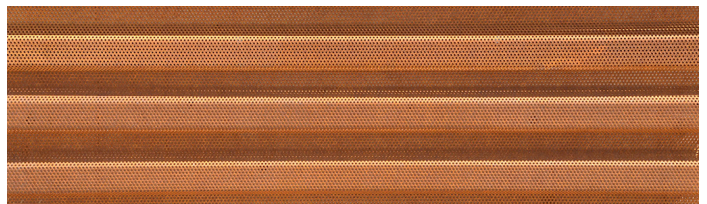
7/8" Corrugated



Western Rib® (7.2 Panel)



PBR/R-Panel



Western Wave®



REAL RUSTED METAL ROOFING & METAL WALL PANELS WEATHERING STEEL

AVAILABLE IN ASTM A606-4 (AKA CORTEN) OR BARE COLD ROLLED

Available Panel Profiles:



7/8" Corrugated



1/2" Corrugated



R-Panel - 1.25" Deep



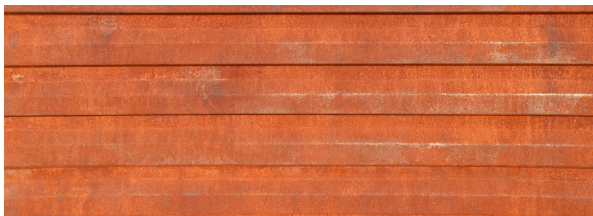
SS675 Standing Seam - 1.75" Deep
Clip System Standing Seam



Western Rib® (7.2 Panel) - 1.5" Deep



RustWall® - 1" Deep
Flush Wall/Soffit Panel



Western Wave® - 7/8" Deep
Horizontal & Vertical Wall Panel



Western Reveal® - 1.5" Deep
Flush Wall/Soffit Panel

8

Material does not arrive pre-rusted. Panel will rust naturally with exposure to the weather.

Western States Metal Roofing | 901 W. Watkins St., Phoenix, AZ 85007 | 855-4CORTEN (855-426-7836) | corten.com | sales@corten.com

© Copyright 2019. Subject to change without notice. Effective 17 May 2019.

4066-19