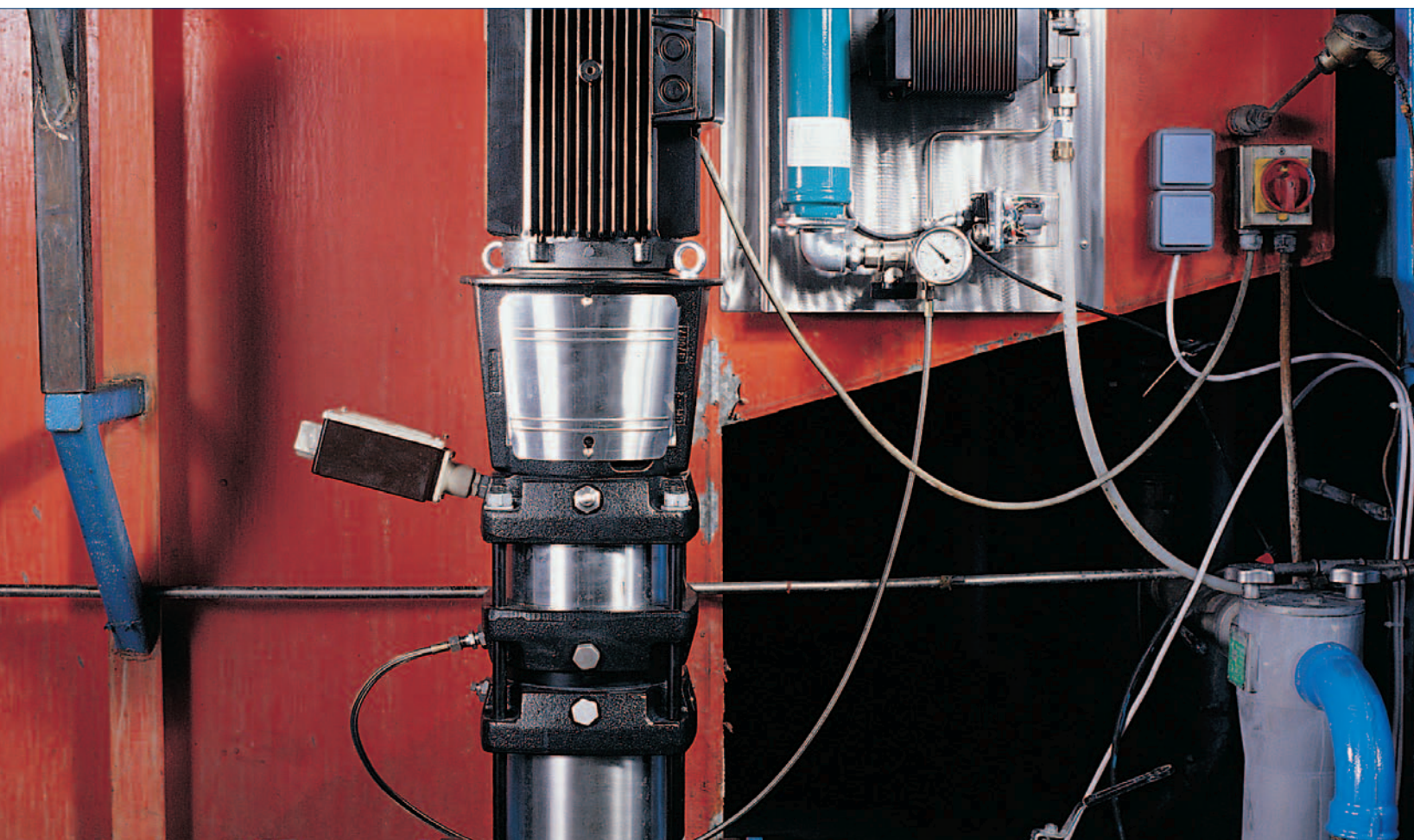


Grundfos CR double shaft seal

Aggressive or dangerous liquids

For industrial applications that involve toxic, aggressive or even explosive liquids, leak-free pumping is top priority. Pumps that leak these kinds of liquids pose a risk for the environment in which they operate and for the people working close

to them. Grundfos has developed the CR Double Shaft Seal; a 100% leak-free pump. The CR Double Shaft Seal is a pump with two shaft seals mounted in a back-to-back arrangement in a pressurized seal chamber that prevents the pump from leaking.



Grundfos CR double shaft seal advantages

No Leakage

Because of the double shaft seal construction, liquids are prevented from penetrating into the shaft seal's working environment and damaging it. The most important advantage of this construction is that whether it is a toxic, aggressive or explosive liquid that the pump is handling, the liquid stays where it is supposed to — inside the pump.

Safety

The CR Double Shaft Seal does not leak, which leads to another advantage that comes with this pump. The working environment is safe when the risk of leak of toxic or explosive media is eliminated. Because of the CR Double Shaft Seal, people working close to the pumps do not need to fear for their safety. No leak, no risk of pollution.

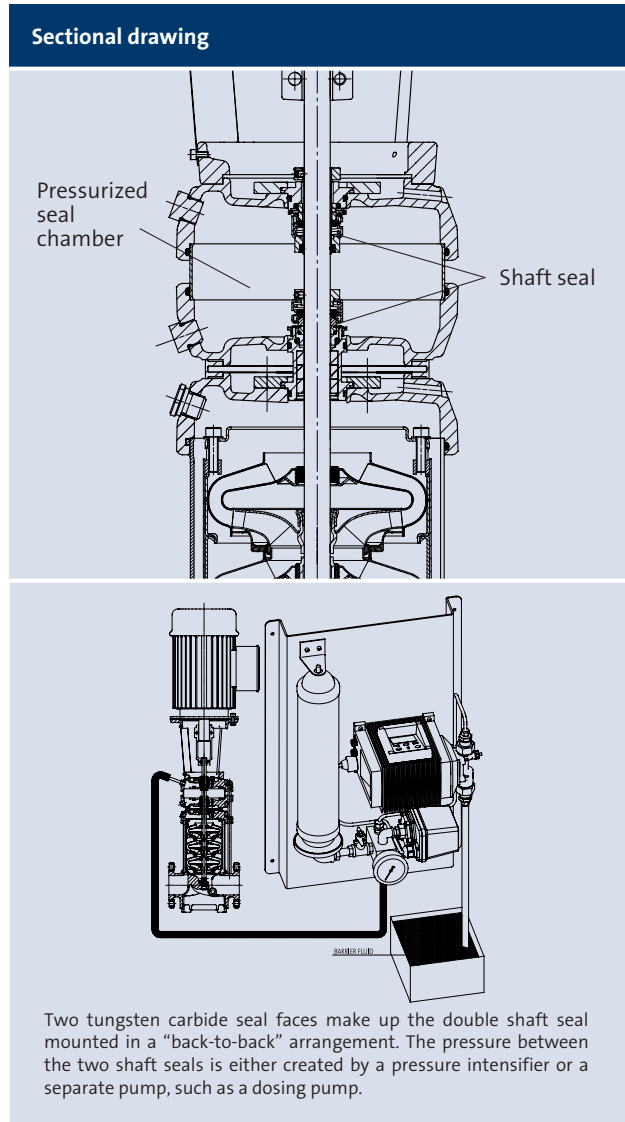
Technical data	
Max. pressure	362 psi (25 bar)
Max. ambient temp.	104°F (40°C)
Max. liquid temp.	248°F (120°C)
Min. inlet pressure	No change from standard CR
Min. flow	No change from standard CR

Longer lifespan of shaft seal

With the CR Double Shaft Seal, the pumped liquid is not in direct contact with the shaft seal. Especially in applications dealing with particles or sticky liquids such as paint, the double shaft seal is not exposed to excessive wear and has a longer lifespan than a traditional shaft seal.

Custom-built solutions

Grundfos CR range covers a wide range of industrial applications. Grundfos also designs custom-built pump solutions. We can provide a custom-built Grundfos CR capable of handling even higher pressures, more aggressive liquids, excessive liquid temperatures etc. than our standard CR pumps.



Two tungsten carbide seal faces make up the double shaft seal mounted in a "back-to-back" arrangement. The pressure between the two shaft seals is either created by a pressure intensifier or a separate pump, such as a dosing pump.

Worldwide pump supplier

Being a worldwide pump supplier, Grundfos has committed itself to provide its clients with a global, reliable and efficient service network. Our experienced team of technicians are ready to provide service wherever in the world you are, whenever you need it.

L-CR-SL-009 | Rev. 2/04
 PRINTED IN USA

Subject to alterations