



OFFICIAL DRESS CODE GUIDELINES

ENSURING A PROFESSIONAL AND
STYLISH ATMOSPHERE FOR ALL
PARTICIPANTS AND SPECTATORS



**FIDE World
Rapid & Blitz
Championships
2024**



 By: GM Ahmed Adly
Chairman - FIDE Athletes Commission



Dress to Impress: Elevate the Game



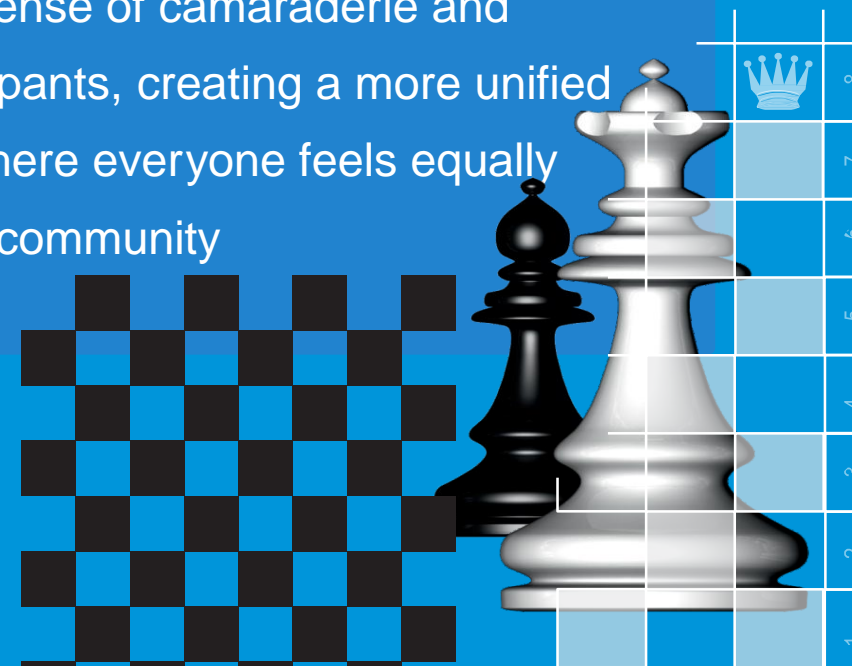
At the FIDE World Rapid & Blitz Championships, we encourage players, officials, and staff to embrace a dress code that reflects the prestige and elegance of this global chess event. It's about creating a positive and inspiring image for chess, showcasing a level of professionalism that aligns with the high caliber of competition.

Project an Image of Excellence

A polished appearance conveys seriousness and respect for the game, setting the tone for a focused and engaging tournament experience. It helps elevate the overall atmosphere, creating a dignified and memorable event.

Showcase Respect and Unity

The dress code promotes a sense of camaraderie and mutual respect among participants, creating a more unified and cohesive environment where everyone feels equally valued and part of the chess community





Who Should Adhere to the Dress Code?

The dress code applies to all individuals participating in the FIDE World Rapid & Blitz Championships, ensuring a consistent and professional look across the entire event. This includes:

Players

All participating players, showcasing their commitment to the game and its image.

Officials

FIDE officials, arbiters, and staff, representing the authority and integrity of the organization.

Representatives

FIDE representatives attending the event, upholding a professional standard for the organization's public image.



Smart Business Attire: The Standard for Excellence

The dress code for the playing venue is **Smart Business Attire**, aiming for a balance between professionalism and comfort. This allows for individual expression while maintaining a consistent level of elegance.

1 Men

Suits, trousers, long-sleeve or short-sleeve shirts, polo-shirts, shoes, loafers, jackets, vests, sweaters, or national traditional dress (with prior approval from the FIDE Technical Delegate).

2 Women

Suits, dresses, skirts, blouses, turtlenecks, shirts or polos, trousers or slacks, jackets, vests, sweaters, scarves, footwear (boots, flats, mid-heel or high-heel shoes), and jewelry (earrings, necklaces, etc.), as well as national costumes clothing (with prior approval from the FIDE Technical Delegate).



Guiding Samples of Approved Outfits !!



**DRESS FOR CHESS
TO IMPRESS**



APPROVED

Blazers

Blouses

Trousers

Skirts/Dresses

* Dress up what fits you the most , These photos are guidelines examples !

What's NOT Allowed? Avoiding Unprofessional Attire



Sneakers "all styles"

Avoid athletic footwear and opt for more formal shoe options.



Jeans

Jeans are generally not considered business attire.



T-Shirts

For men, choose collared shirts or polo shirts. For women, consider blouses, dresses, or more formal T-shirts.



Torn Clothing

Ensure that all clothing is in good condition and clean.



Beyond the Playing Venue: Relaxed Dress Code

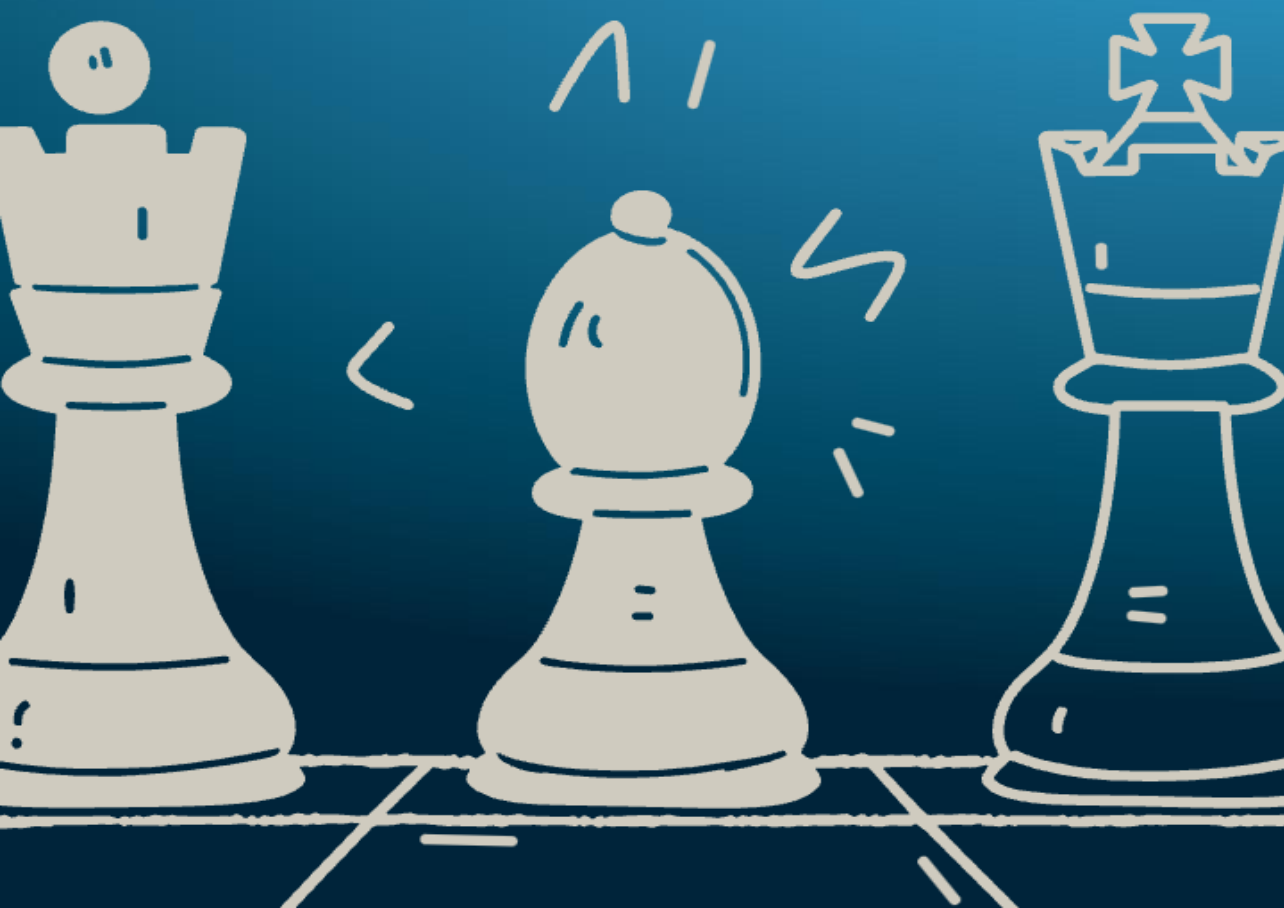
Outside the playing venue, the dress code is relaxed, allowing for more casual attire. However, remember to maintain a respectful and appropriate appearance.

Enjoy your time at the FIDE World Rapid & Blitz Championships, celebrating the game and making lasting memories.



Enforcing the Dress Code: Ensuring Fair Play

The dress code is strictly enforced to maintain a consistent level of professionalism and respect for the event. The Chief Arbiter, in consultation with the FIDE Athletes Commission, will ensure that the dress code is upheld.



1 First Infringement

A financial penalty of 200 € for open events and 100 € for women's events. The player is allowed to play the current round.

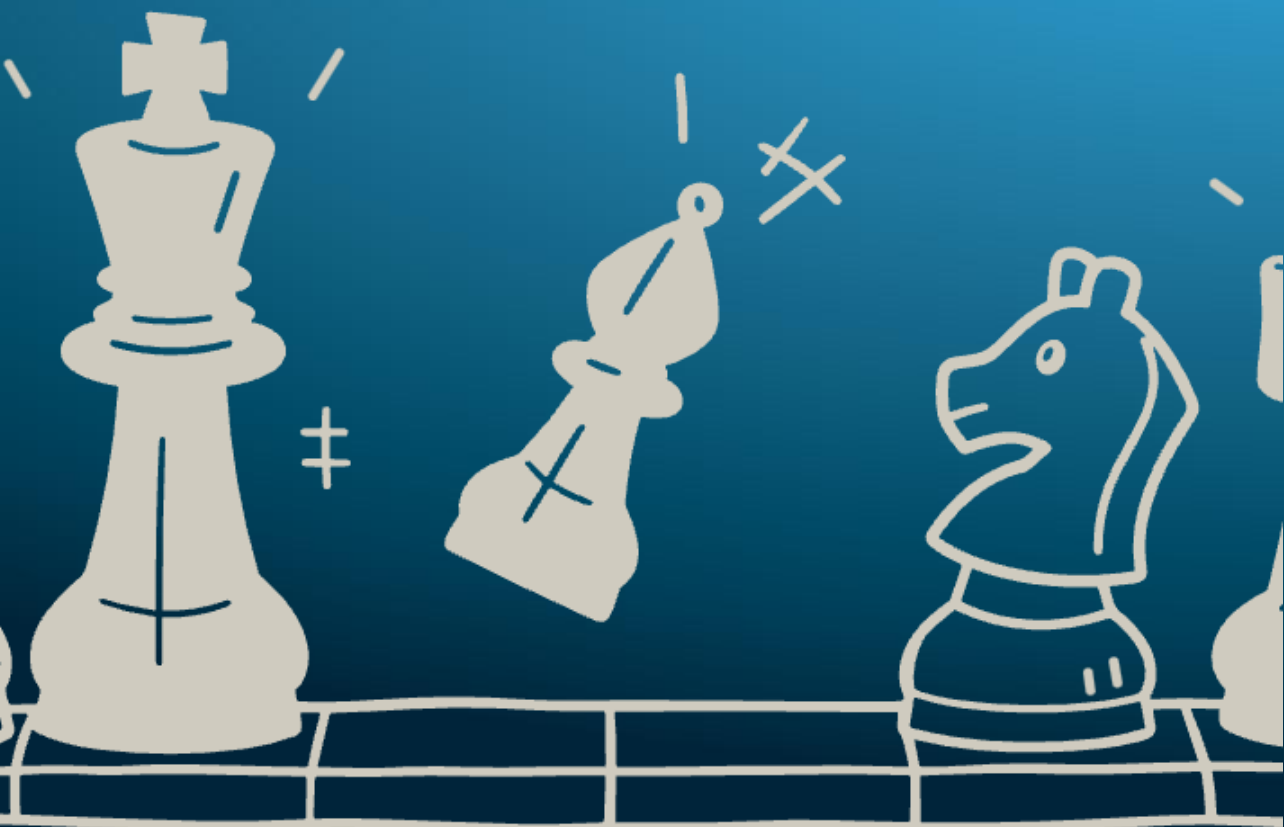
2 Further Infringements

Exclusion from the pairings for the next round. Each round counts as one infringement.



Embrace the Spirit of Chess: A Celebration of Excellence

The FIDE World Rapid & Blitz Championships is a celebration of chess, a game of strategy, intellect, and sportsmanship. Let's come together to create an atmosphere that reflects the high caliber of play and the spirit of this remarkable game.



Respectful Attire	Professionalism	Positive Image
Consistent Standards	Fair Play	Memorable Experience





FIDE: Leading the Way in Chess Excellence

FIDE, the International Chess Federation, is dedicated to promoting and developing chess globally. The FIDE World Rapid & Blitz Championships is a pinnacle event that showcases the best of chess talent worldwide.



Prestige

The championship is a prestigious event, attracting top players from around the globe.



Global Reach

The event has a global reach, uniting chess enthusiasts from diverse cultures and backgrounds.



Strategic Vision

FIDE's vision is to guide the development of chess on a global scale, promoting its educational and social benefits.